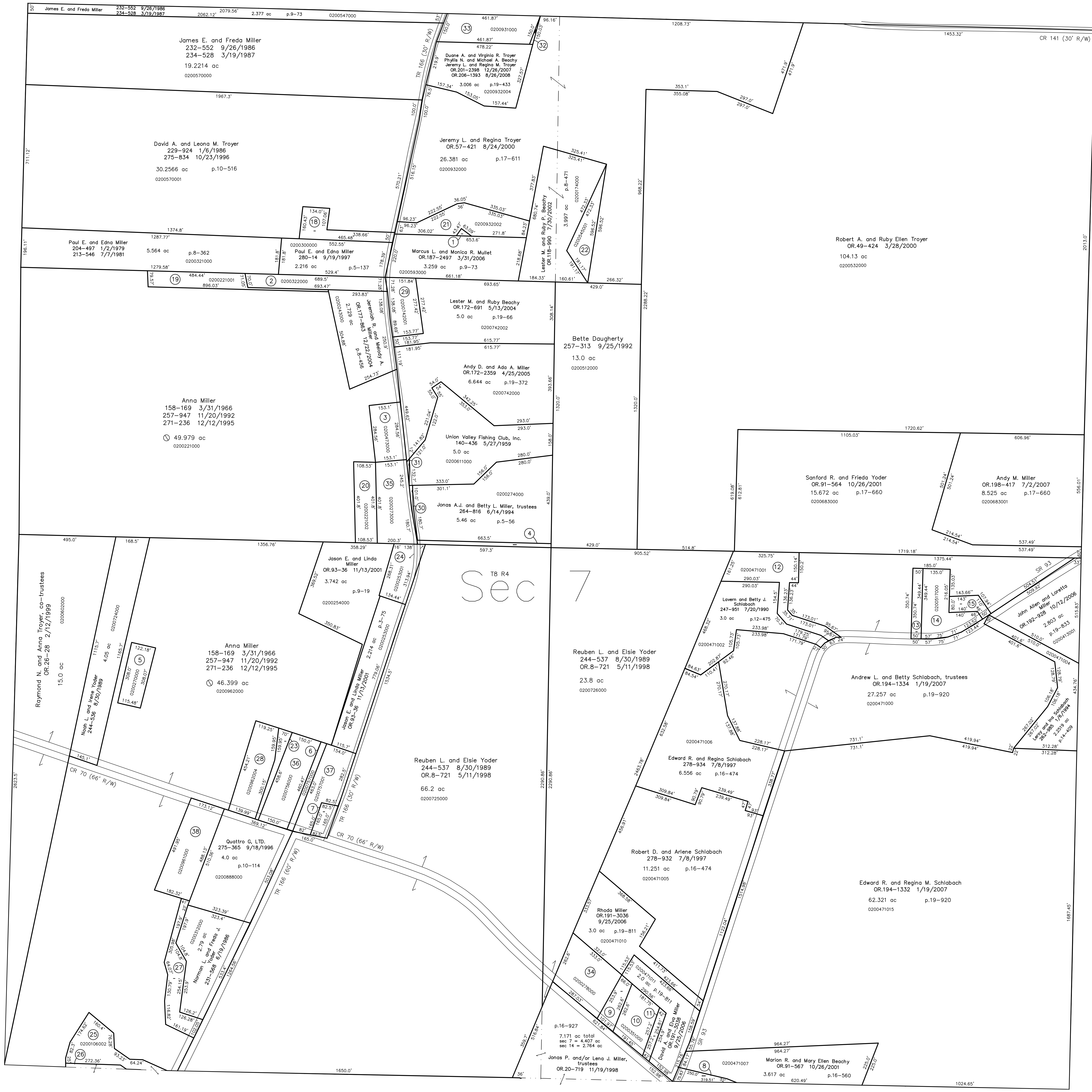


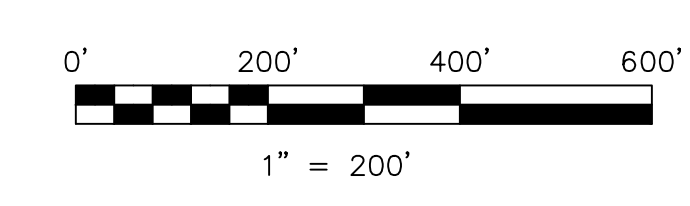
- 0200932001 ① Marcus L. and Monica R. Mullet
OR.187-2497 3/31/2006
0.332 ac p.12-833
- 0200322000 ② Paul E. and Edna Miller
204-495 1/2/1979
213-546 7/7/1981
1.05 ac p.8-361
- 0200473000 ③ Michael Schrock and Sharon Beachy
OR.195-2359 3/23/2007
1.0 ac
- 0200511000 ④ Bette Daugherty
257-513 9/25/1992
0.28 ac
- 0200270000 ⑤ Karen Sue and Wilma Mae Miller
275-463 9/25/1996
0.84 ac p.7-306
- 0000000000 ⑥ Quattro G. Ltd.
275-365 9/18/1996
0.316 ac
- 0200105000 ⑦ Quattro G. Ltd.
275-365 9/18/1996
0.313 ac
- 0200471008 ⑧ Marion R. and Mary Ellen Beachy
OR.184-1296 10/28/2005
0.284 ac p.17-586
- 0200344000 ⑨ David Allen and Elva J. Miller
OR.78-946 6/21/2001
0.48 ac p.5-51
- 0200351000 ⑩ David A. and Elva J. Miller
275-360 12/3/1996
1.067 ac
- 0200350000 ⑪ David A. and Elva J. Miller
275-360 12/3/1996
0.235 ac p.5-123
- 0200471001 ⑫ Sanford and Frieda Yoder
243-474 5/24/1989
1.731 ac p.12-219
- 0200516000 ⑬ Edwin R. and Diana S. Schlabach
OR.112-713 5/14/2002
0.4 ac p.8-295
- 0200517000 ⑭ Edwin R. and Diana S. Schlabach
OR.112-713 5/14/2002
1.38 ac p.5-34
- 0200471003 ⑮ Edwin R. and Diana S. Schlabach
OR.112-713 5/14/2002
0.351 ac p.12-672
- 0000000000 ⑯ not used
- 0000000000 ⑰ not used
- 0200570002 ⑱ Joshua David and Amy Renae Troyer
OR.184-1296 10/28/2005
0.865 ac p.16-258
- 0200221001 ⑲ Paul E. and Edna Miller
278-299 5/20/1997
0.987 ac p.16-427
- 0200221002 ⑳ Wilbur J. and Rhoda K. Miller
OR.58-813 9/18/2000
1.0 ac p.17-316
- 0200932002 ㉑ Lester M. and Ruby P. Beachy
OR.118-990 7/30/2002
1.651 ac p.17-611
- 0200545001 ㉒ Lester M. and Ruby P. Beachy
OR.118-990 7/30/2002
0.877 ac p.17-611
- 0200962001 ㉓ Quattro G. Ltd.
OR.69-780 3/16/2001
0.348 ac p.17-813
- 0200253001 ㉔ Marietta Miller
OR.93-34 11/13/2001
0.946 ac p.18-121
- 0200106002 ㉕ Marilyn Kay Wengert
OR.124-492 10/2/2002
1.268 ac p.18-400
- 0200962002 ㉖ Ivan W. and Leona M. Mast
OR.167-3168 11/25/2003
0.13 ac p.18-783
- 0200962003 ㉗ Norman L. and Freda J. Yoder
OR.163-858 6/12/2003
1.182 ac p.18-726
- 0200962004 ㉘ Quattro G. Ltd.
OR.168-2755 12/10/2003
1.465 ac p.18-835
- 0200742001 ㉙ Leroy M. and Frieda Yoder
OR.0172-688 5/13/2004
1.0 ac p.19-66
- 0200742003 ㉚ Andy D. and Ada A. Miller
OR.179-2359 4/25/2005
0.058 ac p.19-372
- 0200742004 ㉛ Andy D. and Ada A. Miller
OR.179-2359 4/25/2005
0.02 ac p.19-372
- 0200932003 ㉜ Jason Lynn and Gloria Beachy
OR.180-3415 6/17/2005
0.201-289 11/19/2007
0.027 ac p.19-433
- 0200931000 ㉝ Jason Lynn and Gloria Beachy
OR.180-3415 6/17/2005
OR.196-3419 5/15/2007
1.5 ac p.10-361
- 0200278000 ㉞ Wilbur J. and Rhoda K. Miller
OR.40-840 10/19/1999
1.75 ac p.3-59 B
- 0200273000 ㉟ Wilbur J. and Rhoda K. Miller
OR.58-813 9/18/2000
1.63 ac p.3-97
- 0200756000 ㊱ Quattro G. LTD.
275-365 9/18/1996
1.581 ac p.9-32
- 0200757001 ㊲ Quattro G. LTD.
275-365 9/18/1996
1.35 ac
- 0200961000 ㊳ Quattro G. LTD.
275-365 9/18/1996
1.996 ac p.10-488

T8, R5, Sec. 6 C-29



Tusc County CR 72
Shutt Valley Road

Tuscarawas County, Sugarcreek Township T8, R4, Sec. 8



LET IT BE KNOWN, THIS MAP HAS BEEN PREPARED AS A REFERENCE GUIDE TO PROPERTY OWNERSHIP. WE BELIEVE THIS INFORMATION TO BE CORRECT AND CURRENT, HOWEVER IT IS NOT INTENDED FOR ANY LEGAL USE, WHETHER IT BE IN SALES, TRANSFERS, TRADES, LEASES OF ANY TYPE, ETC., AND DO NOT ACCEPT RESPONSIBILITY FOR ERRORS OF ANY NATURE OR OMISSIONS CONTAINED HEREIN.

new survey required for next transfer

Last Revision: 8/26/2008

T-8, R-4, Sec.7
Clark Twp.
Holmes County, Ohio

C-34

