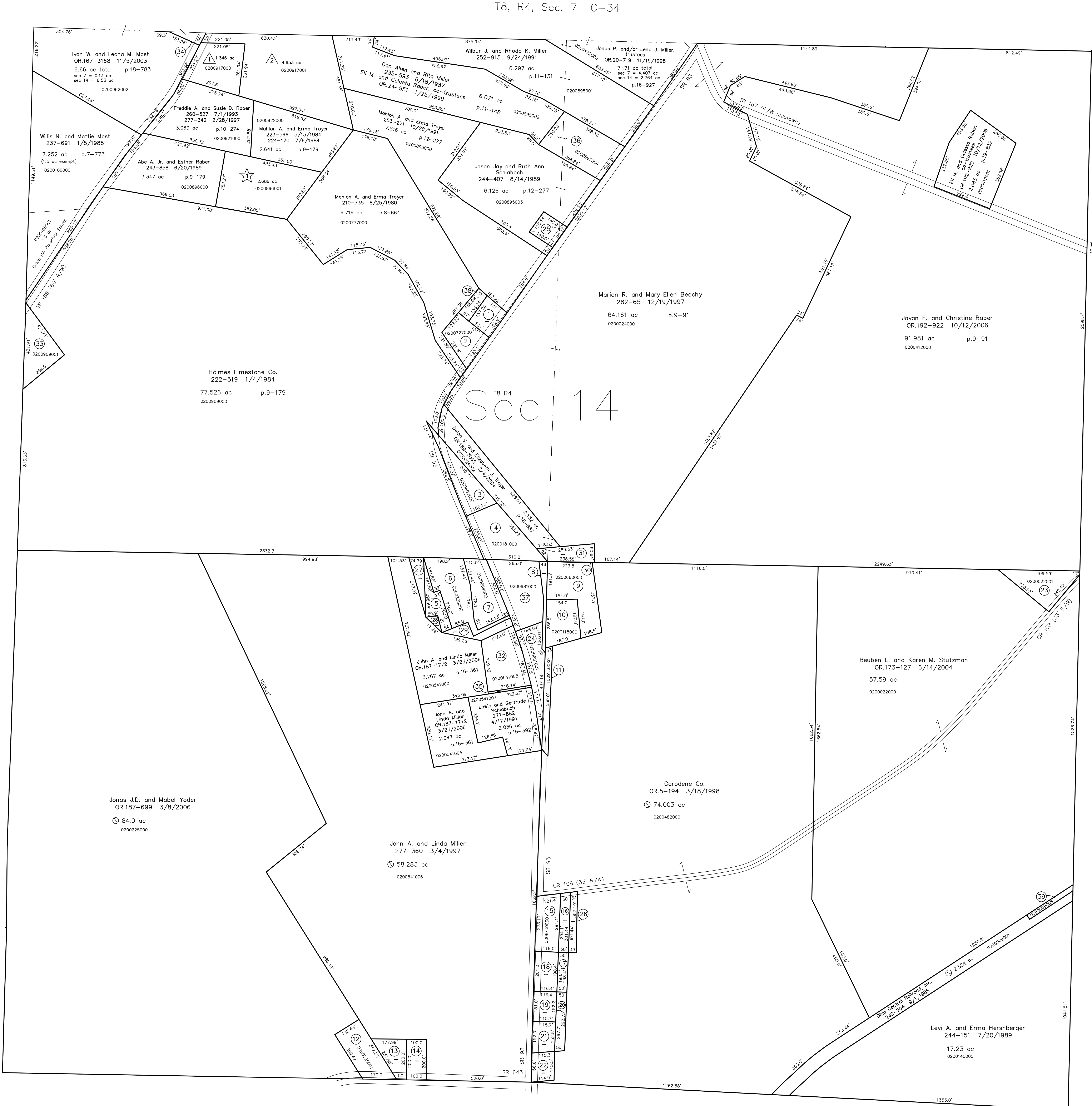


- 0200613000 ① Willis M. and Miriam A. Troyer
OR 116-987 7/5/2002
0.47 ac p.5-62
- 0200727000 ② Clara Miller, trustee
OR 191-289 9/15/2006
0.756 ac p.19-806
- 0200492000 ③ Delon V. and Elizabeth J. Troyer
OR 23-294 12/29/1998
0.98 ac p.5-117
- 0200181000 ④ Delon V. and Elizabeth J. Troyer
266-595 11/4/1994
1.42 ac
- 0200541001 ⑤ Wayne M. and Wilma D. Miller
260-106 6/1/1993
0.442 ac p.1-16
- 0200338000 ⑥ Wayne M. Miller
247-769 7/2/1990
1.58 ac p.5-7
- 0200669000 ⑦ Lovem J. and Debbie S. Yoder
220-616 6/10/1983
1.08 ac p.5-12
- 0200659000 ⑧ Daniel C. Yoder, trustee
OR 169-2377 1/20/2004
0.249 ac p.7-368
- 0200660000 ⑨ Daniel C. Yoder, trustee
OR 169-2377 1/20/2004
1.45 ac p.4-75
- 0200118000 ⑩ Donovan J. and Jody E. Hershberger
202-234 6/8/1978
0.837 ac
- 0200118001 ⑪ Donovan J. and Jody E. Hershberger
202-234 6/8/1978
0.4 ac
- 0200225001 ⑫ Jason and Janet Mast
OR 94-374 11/27/2001
1.0 ac p.14-285
- 0200771000 ⑬ Robert L. Miller
222-119 1/16/1983
OR 41-870 11/8/1999
0.332 ac p.5-83
- 0200329000 ⑭ Robert L. Miller
180-878 7/17/1972
0.459 ac p.5-142
- 0200179000 ⑮ William R. and Eva Kelm
171-321 8/26/1969
269-642 7/27/1995
0.775 ac p.4-50
- 0200178000 ⑯ William R. and Eva Kelm
196-149 10/19/1976
262-853 12/29/1993
269-642 7/27/1995
0.342 ac p.7-718
- 0200476000 ⑰ Lewis and Gertrude Schlabach
205-100 3/7/1979
0.228 ac p.7-577
- 0200475000 ⑱ Lewis and Gertrude Schlabach
205-100 3/7/1979
0.535 ac
- 0200773000 ⑲ Mattie Schlabach
211-623 12/8/1980
278-171 5/8/1997
0.4 ac
- 0200470000 ⑳ Mattie Schlabach
211-623 12/8/1980
278-171 5/8/1997
0.339 ac p.7-577
- 0200754000 ㉑ Gertrude Schlabach
OR 21-402 11/30/1998
0.4 ac
- 0200753000 ㉒ Gertrude Schlabach
OR 21-402 11/30/1998
0.4 ac
- 0200022001 ㉓ Wilma Beachy
247-941 7/19/1990
1.0 ac p.12-476
- 0200681001 ㉔ Donovan J. and Jody E. Hershberger
280-99 9/25/1997
0.922 ac p.14-720
- 0200895005 ㉕ Jason Jay and Ruth Ann Schlabach
267-907 3/17/1995
OR 178-1388 2/22/2005
OR 178-2701 3/15/2005
0.402 ac p.14-764
- 0200482001 ㉖ William R. and Eva Kelm
271-720 1/19/1998
0.255 ac p.16-4
- 0200541003 ㉗ Wayne M. and Wilma D. Miller
277-357 3/4/1997
0.256 ac p.16-361
- 0200541004 ㉘ Wayne M. and Wilma D. Miller
277-357 3/4/1997
0.06 ac p.16-361
- 0200541002 ㉙ Wayne M. and Wilma D. Miller
277-357 3/4/1997
0.325 ac p.16-361
- 0200482002 ㉚ Daniel C. Yoder, trustee
OR 169-2377 1/20/2004
0.008 ac p.16-866
- 0200024001 ㉛ Daniel C. Yoder, trustee
OR 169-2377 1/20/2004
0.468 ac p.16-958
- 0200541008 ㉜ Lewis and Gertrude Schlabach
OR 175-3125 10/25/2004
1.303 ac p.17-310
- 0200909001 ㉝ Edwin D. and Anna H. Troyer
OR 93-711 11/20/2001
1.0 ac p.18-127
- 0200106002 ㉞ Marilyn Kay Wengard
OR 124-492 10/13/2002
0.13 ac p.18-400
- 0200541009 ㉟ Lewis and Gertrude Schlabach
OR 169-499 12/30/2003
0.65 ac p.17-310
- 0200895004 ㊱ Dan Allen and Rita Miller
251-334 5/14/1991
1.682 ac p.12-656
- 0200681000 ㊲ Susan Yoder
217-938 8/17/1982
244-443 8/18/1989
1.609 ac p.2-130
- 0200727001 ㊳ Willis M. and Miriam A. Troyer
OR 201-783 11/27/2007
0.222 ac p.19-1197
- 0290009008 ㊴ Trackside Investments, LLC
OR 206-2514 9/12/2008
0.156 ac p.19-1383

T8, R5, Sec. 15 C-28



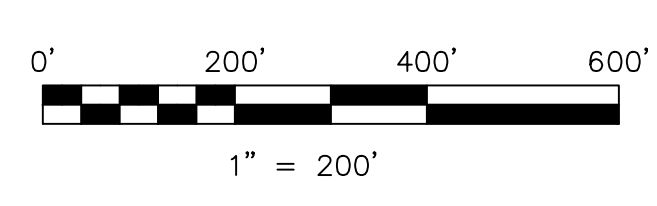
T8, R4, Sec. 7 C-34

T8, R4, Sec. 17 C-32

Tuscarawas County, Auburn Township T8, R4, Sec. 13

Tuscarawas County, Auburn Township T8, R4, Sec. 13

- △ Union Valley Hilltop View Allotment No.1
Plat 15-73 Platted 12/19/1995
- 0200917000 △ Joy E. and Wanda L. Miller
272-586 3/14/1996
1.346 ac p.15-73
- 0200917001 △ Benue Roy and Julia Ann Stoltzfus
271-340 12/18/1995
4.653 ac p.15-73
- ☆ Mabee Subdivision
Plat 19-266 Platted 12/7/2004
- 0200896001 ☆ Marvin A. and Regina A. Raber
OR 179-3047 5/3/2005
2.686 ac p.19-266



LET IT BE KNOWN, THIS MAP HAS BEEN PREPARED AS A REFERENCE GUIDE TO PROPERTY OWNERSHIP. WE BELIEVE THIS INFORMATION TO BE CORRECT AND CURRENT, HOWEVER IT IS NOT INTENDED FOR ANY LEGAL USE, WHETHER IT BE IN SALES, TRANSFERS, TRADES, LEASES OF ANY TYPE, ETC., AND DO NOT ACCEPT RESPONSIBILITY FOR ERRORS OF ANY NATURE OR OMISSIONS CONTAINED HEREIN.

new survey required for next transfer

Last Revision: 9/12/2008

T-8, R-4, Sec.14
Clark Twp.
Holmes County, Ohio

C-33

