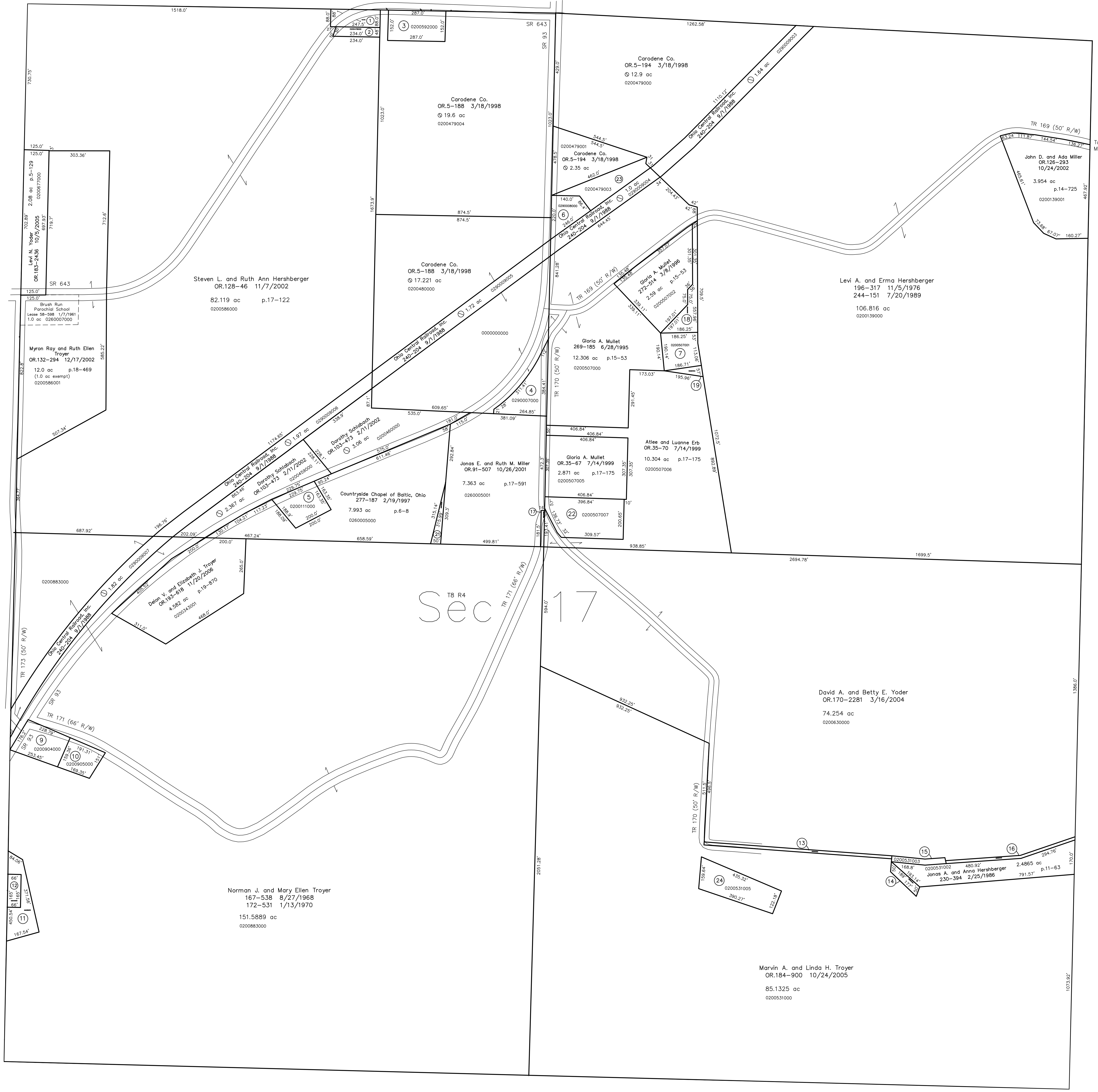
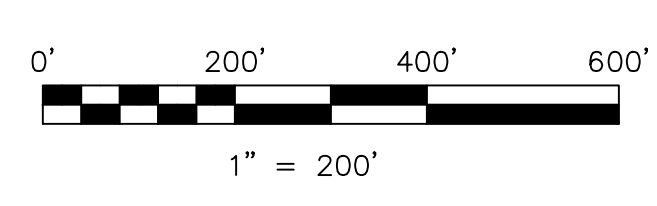


- 0200479002 ① Carodene Co.  
OR.5-188 3/18/1998  
0.5 ac
- 0200478000 ② Carodene Co.  
OR.5-188 3/18/1998  
0.25 ac
- 0200592000 ③ Robert H. and/or Lovina T. Brandt, trustees  
OR.45-55 1/6/2000  
1.0 ac p.4-157
- 0280007000 ④ The East Ohio Gas Company  
158-133 3/25/1966  
1.029 ac p.4-85
- 0200111000 ⑤ John Allen and Marvin Ray Hershberger  
OR.146-259 4/22/2003  
0.855 ac
- 0290008000 ⑥ Holmes-Wayne Electric Cooperative, Inc.  
156-385 9/14/1965  
0.6 ac p.4-71
- 0200507001 ⑦ Eva Keim, trustee  
OR.46-661 2/3/2000  
0.75 ac p.10-777
- 0000000000 ⑧ not used
- 0200904000 ⑨ Edward L. Gouse  
184-892 9/4/1973  
OR.147-39 4/28/2003  
0.913 ac p.3-58
- 0200905000 ⑩ Myrom Down Gouse  
222-11 11/1/1983  
279-668 8/27/1997  
0.637 ac p.10-204
- 0200882000 ⑪ Abe H. and Ina S. Mast  
218-785 11/10/1982  
279-882 9/11/1997  
0.8401 ac p.10-69
- 0201016000 ⑫ school site?  
ex. and DV.279-882  
0.25 ac
- 0200630001 ⑬ Marvin A. and Linda H. Troyer  
OR.184-900 10/24/2005  
0.324 ac p.11-63
- 0200531004 ⑭ Jonas A. and Anna Hershberger  
245-474 11/28/1989  
OR.183-2436 10/6/2005  
0.181 ac p.12-338
- 0200531003 ⑮ Jonas A. and Anna Hershberger  
230-396 2/25/1986  
0.185 ac p.11-63
- 0200531001 ⑯ David A. and Betty E. Yoder  
OR.170-2281 3/16/2004  
0.232 ac p.11-63
- 0201017000 ⑰ Abraham C. Troyer?  
DV.95-215  
0.068 ac
- 0200507003 ⑱ Eva Keim, trustee  
OR.46-661 2/3/2000  
0.665 ac p.15-53
- 0200507004 ⑲ Eva Keim, trustee  
OR.46-661 2/3/2000  
0.124 ac p.15-53
- 0000000000 ⑳ not used
- 0200459001 ㉑ Countryside Chapel of Battic, Ohio, Inc.  
OR.52-70 7/11/2000  
0.177 ac p.17-555
- 0200507007 ㉒ Altee and Luonne Erb  
OR.178-863 2/14/2005  
1.696 ac p.17-248
- 0200479003 ㉓ Carodene Co.  
OR.5-188 3/18/1998  
unknown ac
- 0200531005 ㉔ Nettie A. Troyer  
OR.43-557 12/10/1999  
1.305 ac p.17-326

T8, R5, Sec. 16 C-27



Tuscarawas County, Auburn Township T8, R4, Sec. 18



LET IT BE KNOWN, THIS MAP HAS BEEN PREPARED AS A REFERENCE GUIDE TO PROPERTY OWNERSHIP. WE BELIEVE THIS INFORMATION TO BE CORRECT AND CURRENT, HOWEVER IT IS NOT INTENDED FOR ANY LEGAL USE, WHETHER IT BE IN SALES, TRANSFERS, TRADES, LEASES OF ANY TYPE, ETC., AND DO NOT ACCEPT RESPONSIBILITY FOR ERRORS OF ANY NATURE OR OMISSIONS CONTAINED HEREIN.

new survey required for next transfer

Last Revision: 11/20/2006

**T-8, R-4, Sec.17**  
**Clark Twp.**  
**Holmes County, Ohio**

**C-32**

