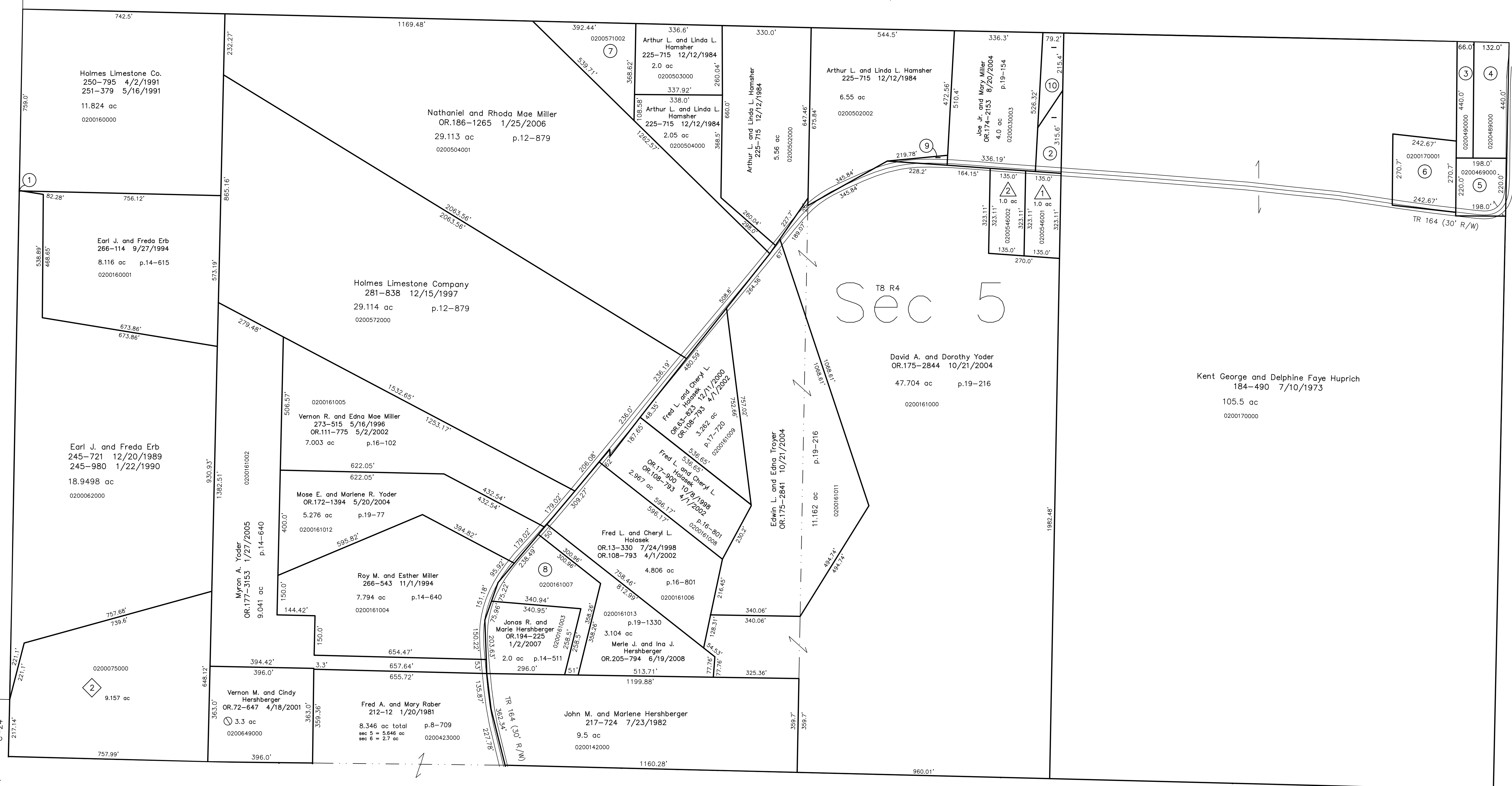


T8, R5, Sec. 1 C-25

Walnut Creek Township T8, R4, Sec. 5 (north 1/2) WC-18

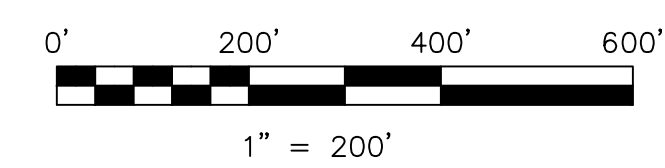


T8, R4, Sec. 4 C-35

T8, R4, Sec. 6 C-29

- 0200063003 ① Holmes Limestone Co.
266-116 9/27/1994
0.0002 ac p.14-615
- 0200612000 ② Kent George and Delphine Faye Huprich
263-588 3/2/1994
0.52 ac p.8-33
- 0200490000 ③ Willis and Ruth Elaine Schlabach
195-104 7/21/1976
202-404 6/26/1978
0.667 ac
- 0200489000 ④ Willis and Ruth Elaine Schlabach
195-104 7/21/1976
202-404 6/26/1978
1.33 ac
- 0200469000 ⑤ Henry C. and Leona I. Schlabach, co-trustees
OR.8-504 5/6/1998
1.0 ac p.7-594
- 0200170001 ⑥ Dale F. and Amy L. Huprich
OR.55-378 7/17/2000
1.5 ac p.17-563
- 0200571002 ⑦ Arthur L. and Linda L. Hamscher
254-111 1/10/1992
1.66 ac p.12-835
- 0200161007 ⑧ John M. and Marlene Hershberger
OR.205-797 6/19/2008
1.895 ac p.19-1331
- 0200030002 ⑨ Arthur L. and Linda L. Hamscher
OR.174-1507 8/12/2004
0.1 ac p.19-154
- 0200030000 ⑩ Kent George and Delphine Faye Huprich
263-588 3/2/1994
0.554 ac by survey

- ① Troyer's Habitat
Plat 18-153 Platted 12/19/2001
- 0200546001 ② Eddie D. and Roxanna L. Regan
OR.117-103 7/9/2002
1.0 ac p.18-155
- 0200546002 ③ Holmes County Habitat for Humanity, Inc.
OR.97-508 12/27/2001
1.0 ac p.18-153
- ④ Dusty Trail Subdivision
Plat 2-352 Platted 8/9/2002
- 0200075000 ⑤ Wayne R. and Diana L. Troyer
OR.123-802 9/27/2002
9.157 ac p.2-352



LET IT BE KNOWN, THIS MAP HAS BEEN PREPARED AS A REFERENCE GUIDE TO PROPERTY OWNERSHIP. WE BELIEVE THIS INFORMATION TO BE CORRECT AND CURRENT, HOWEVER IT IS NOT INTENDED FOR ANY LEGAL USE, WHETHER IT BE IN SALES, TRANSFERS, TRADES, LEASES OF ANY TYPE, ETC., AND DO NOT ACCEPT RESPONSIBILITY FOR ERRORS OF ANY NATURE OR OMISSIONS CONTAINED HEREIN.

⊙ new survey required for next transfer

Last Revision: 6/19/2008

T-8, R-4, Sec.5 (south 1/2)
Clark Twp.
Holmes County, Ohio

C-30