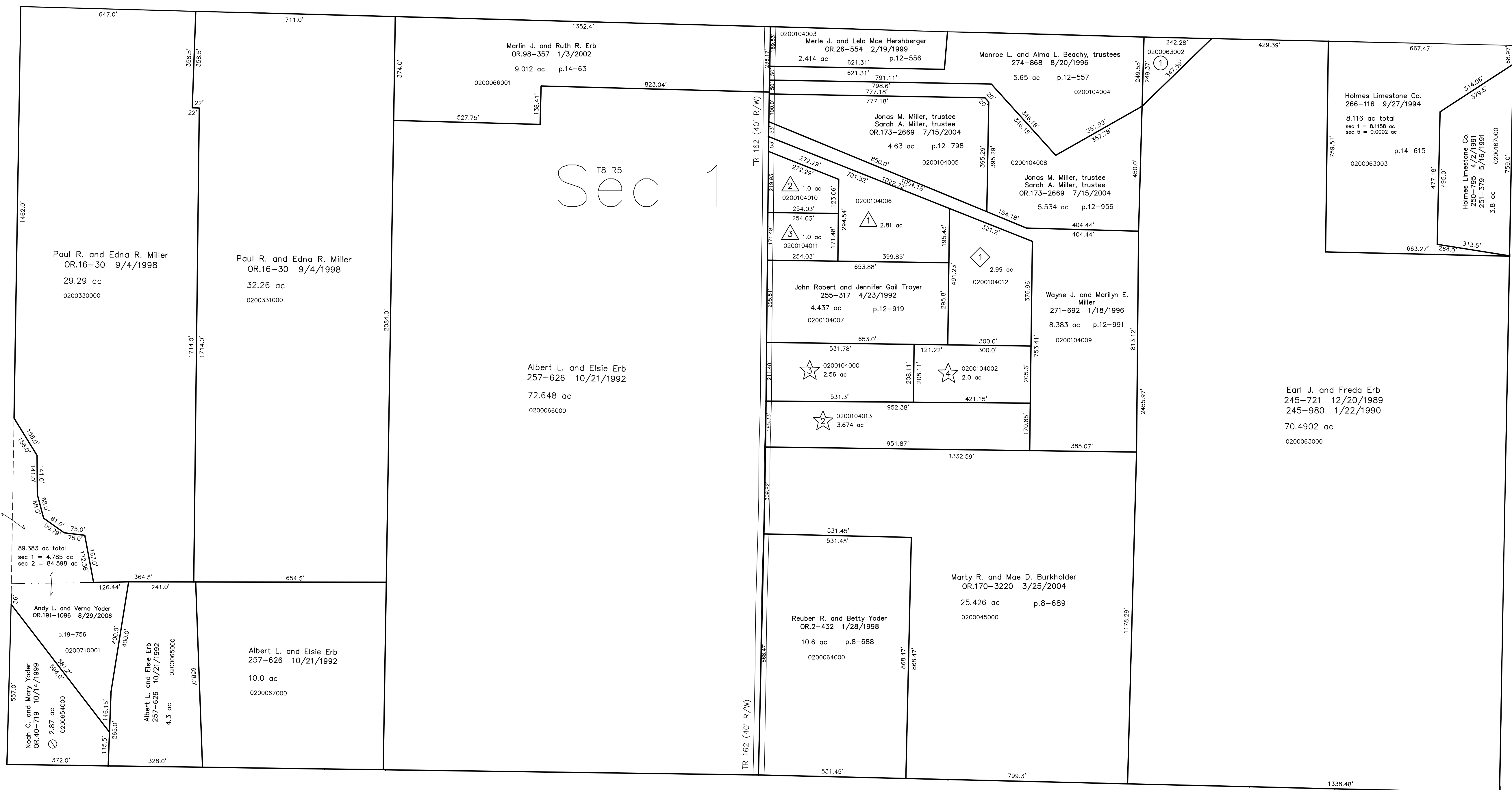


Walnut Creek Township T8, R5, Sec. 1 (north 1/2) WC-12



0200063002 Ⓞ Monroe L. and Alma L. Beachy, trustees
 274-864 8/20/1996
 0.694 ac p.14-39

Henry J. Miller Allotment No.1
 Plat 13-193 Platted 6/29/1993

0200104012 Ⓞ Wayne and Velma Wengard
 OR.146-696 4/25/2003
 2.99 ac p.13-193

Mt. Zion Estates Allotment No.1
 Plat 13-165 Platted 8/11/1992

0200104006 Ⓞ Phillip M. and Cheryl M. Aleshire
 282-143 11/2/1993
 2.81 ac p.13-165

0200104010 Ⓞ Ray A. and Jolene Ann Miller
 254-975 3/26/1992
 283-444 2/14/1994
 266-79 9/23/1994
 OR.46-632 2/2/2000
 1.0 ac p.13-165

0200104011 Ⓞ Brent L. and Elaine K. Mast
 258-323 12/23/1992
 1.0 ac p.13-165

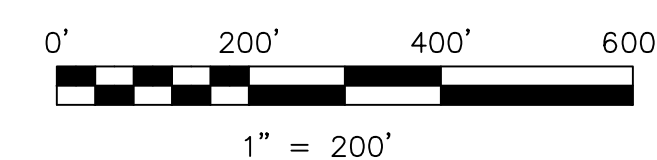
Marion E. Beachy Allotment No.1
 Plat 15-147 Platted 9/30/1997

0200104013 Ⓞ Marvin L. and Sharon Barkman
 OR.204-1283 5/8/2008
 3.674 ac p.15-147

Replotting of Lot 1
 Plat 17-14 Platted 3/1/1999

0200104000 Ⓞ Mark F. and Lucinda Hostetler
 280-434 10/20/1997
 OR.36-331 8/3/1999
 2.56 ac p.17-14

0200104002 Ⓞ John Robert and Jennifer Gail Troyer
 OR.200-178 10/2/2007
 2.0 ac p.17-14



LET IT BE KNOWN, THIS MAP HAS BEEN PREPARED AS A REFERENCE GUIDE TO PROPERTY OWNERSHIP. WE BELIEVE THIS INFORMATION TO BE CORRECT AND CURRENT, HOWEVER IT IS NOT INTENDED FOR ANY LEGAL USE, WHETHER IT BE IN SALES, TRANSFERS, TRADES, LEASES OF ANY TYPE, ETC., AND DO NOT ACCEPT RESPONSIBILITY FOR ERRORS OF ANY NATURE OR OMISSIONS CONTAINED HEREIN.

Ⓞ new survey required for next transfer

Last Revision: 5/8/2008

T-8, R-5, Sec.1 (south 1/2)
Clark Twp.
Holmes County, Ohio

C-25

