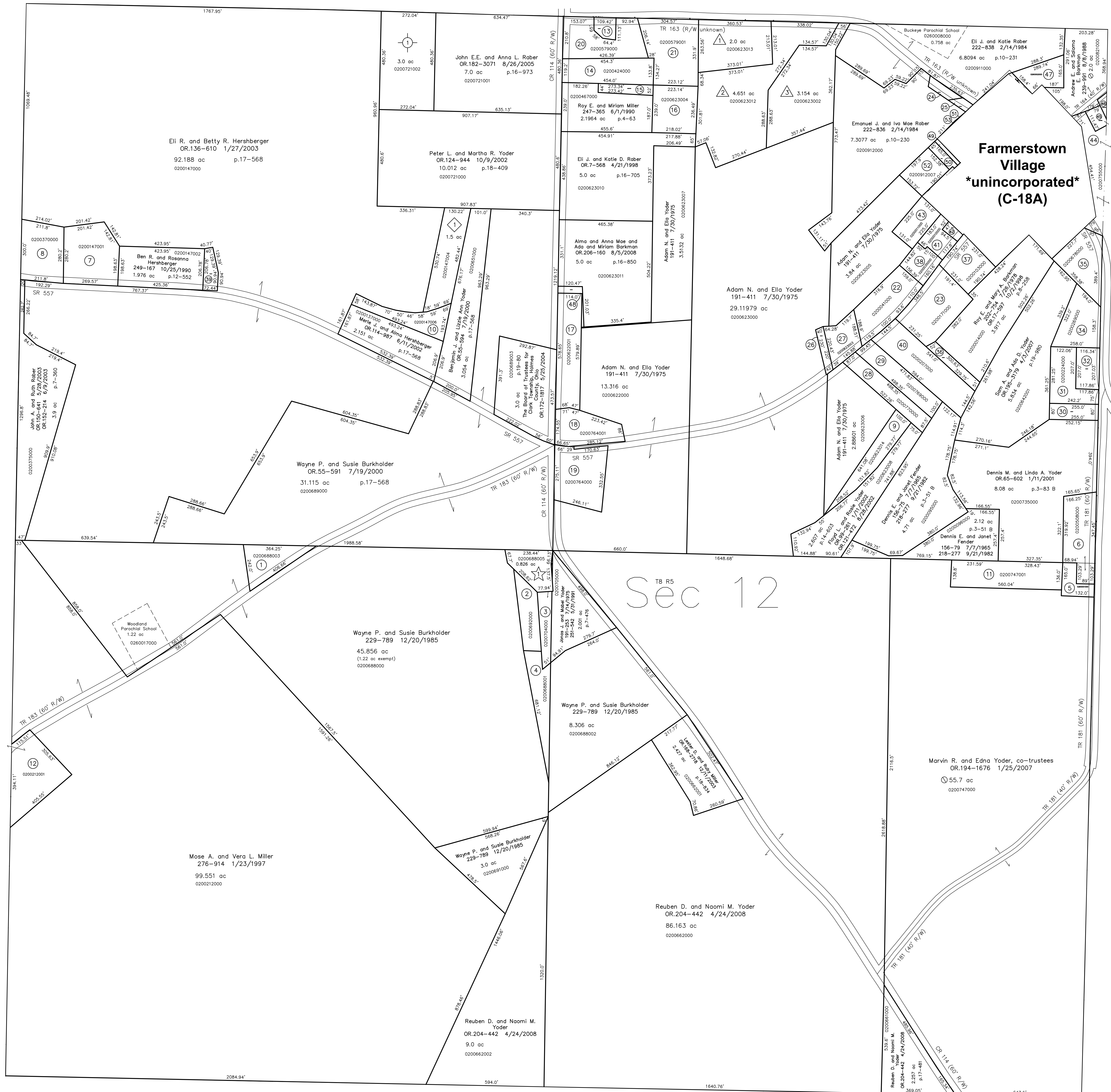


- 0200688003 ① Wayne P. and Susie Burkholder  
229-789 12/20/1985  
1.0 ac
- 0200692000 ② Wayne P. and Susie Burkholder  
229-789 12/20/1985  
0.816 ac
- 0200740000 ③ Jonas J. and Mabel Yoder  
191-253 7/14/1975  
251-542 8/20/1991  
0.497 ac p.7-476
- 0200688004 ④ Wayne P. and Susie Burkholder  
229-789 12/20/1985  
1.821 ac
- 0280001000 ⑤ Trustees of Clark Township  
106-2 7/29/1936  
0.29 ac
- 0200508000 ⑥ Vernon M.C. and Mabel Yoder  
238-205 5/27/1988  
1.45 ac p.7-536
- 0200147001 ⑦ John R. and Martha Hershberger  
243-278 9/6/1986  
1.806 ac p.12-52
- 0200370000 ⑧ Ivan R. and Betty A. Hershberger  
OR.127-649 11/6/2002  
1.26 ac p.5-109
- 0200623014 ⑨ Floyd L. and Rosie Yoder  
OR.99-261 1/11/2002  
OR.121-472 8/28/2002  
1.0 ac p.18-151
- 0200147006 ⑩ Merle J. and Alma Hershberger  
OR.114-987 6/11/2002  
0.918 ac p.18-326
- 0200747001 ⑪ Jacob A. and Ermina M. Yoder  
OR.181-2100 7/8/2005  
1.75 ac p.14-590
- 0200212001 ⑫ Melvin A. and Mary Ann Miller  
258-741 1/27/1993  
1.648 ac p.14-140
- 0200514000 ⑬ Melvin A. and Susie R. Rober  
OR.105-762 3/5/2002  
0.236 ac
- 0200424000 ⑭ Monroe N. and Susie C. Miller, co-trustees  
OR.204-2037 5/16/2008  
1.33 ac p.4-138
- 0200467001 ⑮ Monroe N. and Susie C. Miller, co-trustees  
OR.204-2037 5/16/2008  
0.3036 ac p.10-882
- 0200623004 ⑯ Monroe N. and Susie C. Miller, co-trustees  
OR.204-2037 5/16/2008  
1.2038 ac p.10-882
- 0200622001 ⑰ Emanuel J. and Sara R. Schlabach  
235-465 6/27/1987  
OR.170-2714 and 2718 3/19/2004  
OR.202-689 and 693 1/25/2008  
1.5 ac p.10-754
- 0200784001 ⑱ John F. and Deborah K. Jorg  
OR.171-718 4/5/2004  
OR.171-991 4/7/2004  
1.159 ac p.19-51
- 0200784000 ⑲ Jacob J. Jr. and Fannie Mae Kelm  
OR.188-1276 4/26/2006  
1.709 ac p.19-31
- 0200579000 ⑳ John E.E. and Anna L. Rober  
245-746 12/26/1989  
1.5 ac p.7-716
- 0200579001 ㉑ BE 4 KL, Ltd.  
OR.53-653 12/6/2000  
1.934 ac p.16-218
- 0200041000 ㉒ Emanuel J. and Fannie Yoder  
216-692 4/5/1982  
1.45 ac p.4-145
- 0200171000 ㉓ John F. and Deborah K. Jorg  
213-79 5/26/1981  
1.821 ac
- 0200912001 ㉔ Eli J. and Katie Rober  
235-465 6/27/1987  
0.1848 ac p.10-634
- 0200912002 ㉕ Eli J. and Katie Rober  
251-459 5/23/1991  
0.1 ac p.12-662
- 0200623001 ㉖ Mose M. and Mary A. Yoder  
252-44 7/3/1991  
0.204 ac p.12-699
- 0200623003 ㉗ Mose M. and Mary Yoder  
237-569 12/26/1987  
0.73 ac p.10-883
- 0200770000 ㉘ Roman A. and Betty Miller  
254-132 1/14/1992  
1.0 ac p.5-14
- 0200769000 ㉙ Roman A. and Betty Miller  
254-132 1/14/1992  
1.1 ac p.3-51 B
- 0200369000 ㉚ Mose M.E. and Esther M. Yoder  
231-300 5/29/1986  
0.468 ac p.3-1 B
- 0200224000 ㉛ Mary Lou Crowe  
OR.133-569 11/20/2006  
1.0 ac p.19-868
- 0200194000 ㉜ Lela Beachy  
OR.167-1284 10/15/2003  
0.556 ac p.18-763
- 0200641000 ㉝ Andy J.A. and Katie Ann Yoder  
149-591 3/12/1963  
0.93 ac
- 0200269000 ㉞ John L. and Edna J. Miller, as co-trustees  
OR.199-3103 9/25/2007  
1.24 ac p.4-70
- 0200678000 ㉟ Eli E. and Katie Yoder  
OR.51-409 5/2/2000  
1.3 ac
- 0200208000 ㊱ Roman A. and Betty Miller  
254-132 1/14/1992  
0.362 ac p.8-504
- 0200103000 ㊲ David D. and Carolyn Rober  
OR.19-549 11/2/1998  
1.0 ac
- 0200035000 ㊳ Nancy A. Becht  
OR.184-168 12/29/2006  
0.547 ac p.8-870
- 0200147003 ㊴ Ben R. and Rosanna Hershberger  
OR.45-205 1/10/2000  
0.31 ac p.17-357
- 0200207000 ㊵ Roman A. and Betty Miller  
254-132 1/14/1992  
1.88 ac
- 0200010000 ㊶ Moses E. and Marie M. Barkman  
179-415 2/17/1972  
251-428 5/20/1991  
0.466 ac
- 0260006000 ㊷ Trustees of Clark Township  
106-4 7/29/1936  
0.12 ac
- 0200011000 ㊸ Moses E. and Marie M. Barkman  
177-214 6/16/1971  
251-428 5/20/1991  
0.675 ac p.5-85
- 0200755000 ㊹ Farmerstown Livestock Auction, LLC  
OR.198-351 7/2/2007  
0.947 ac p.11-68
- 0200755001 ㊺ Levi M. and Fannie Yoder  
257-1022 11/24/1992  
0.187 ac p.14-91
- 0200719000 ㊻ Levi M. and Fannie Yoder  
193-560 3/30/1976  
256-646 8/10/1992  
0.074 ac p.7-589
- 0260002000 ㊼ Farmerstown Cemetery?  
see S.R. 5-310
- 0200623009 ㊽ Emanuel J. and Sara R. Schlabach  
OR.7-566 4/21/1998  
OR.170-2714 and 2718 3/19/2004  
OR.202-689 and 693 1/25/2008  
0.128 ac p.16-705
- 0201021000 ㊾ Andrew E. and Saloma E. Barkman  
OR.206-2188 9/8/2008  
0.07 ac p.18-1177
- 0200912010 ㊿ Andrew E. and Saloma E. Barkman  
OR.206-2188 9/8/2008  
0.164 ac p.19-1348
- 0200912006 ① Emanuel J. and Iva Mae Rober  
OR.205-3286 7/30/2008  
0.003 ac p.19-1348
- 0200912008 ② Andrew E. and Saloma E. Barkman  
OR.206-2188 9/8/2008  
0.006 ac p.19-1348

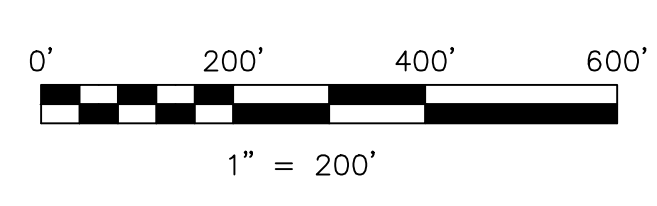


T8, R5, Sec. 13 C-13

T8 R5  
Sec 12

T8, R5, Sec. 11 C-23

- △ Eli J. & Katie D. Rober Subdivision  
Plat 17-561 Platted 7/17/2000
- Farmer's Ridge Subdivision  
Plat 19-1216 Platted 12/28/2007
- ① Dan J. and Lovina Rober  
OR.57-197 8/18/2000  
2.0 ac p.17-561
- ② Eli J. and Katie D. Rober  
OR.57-199 8/18/2000  
4.651 ac p.17-561
- ③ Daniel E. and Lena Rober  
OR.57-195 8/18/2000  
3.154 ac p.17-561
- ◇ D & F's Hillside Acres Subdivision  
Plat 19-298 Platted 2/1/2005
- ④ Daniel J. and Fannie Hershberger  
OR.183-89 3/24/2005  
OR.183-1810 9/26/2005  
1.5 ac p.19-298
- ☆ Valley Estates Subdivision  
Plat 19-1034 Platted 5/25/2007
- ⑤ David J. and Naomi Yoder  
OR.197-2650 6/15/2007  
0.826 ac p.19-1034



LET IT BE KNOWN, THIS MAP HAS BEEN PREPARED AS A REFERENCE GUIDE TO PROPERTY OWNERSHIP. WE BELIEVE THIS INFORMATION TO BE CORRECT AND CURRENT, HOWEVER IT IS NOT INTENDED FOR ANY LEGAL USE, WHETHER IT BE IN SALES, TRANSFERS, TRADES, LEASES OF ANY TYPE, ETC., AND DO NOT ACCEPT RESPONSIBILITY FOR ERRORS OF ANY NATURE OR OMISSIONS CONTAINED HEREIN.

new survey required for next transfer

Last Revision: 9/8/2008  
**T-8, R-5, Sec.12**  
**Clark Twp.**  
**Holmes County, Ohio**

**C-18**