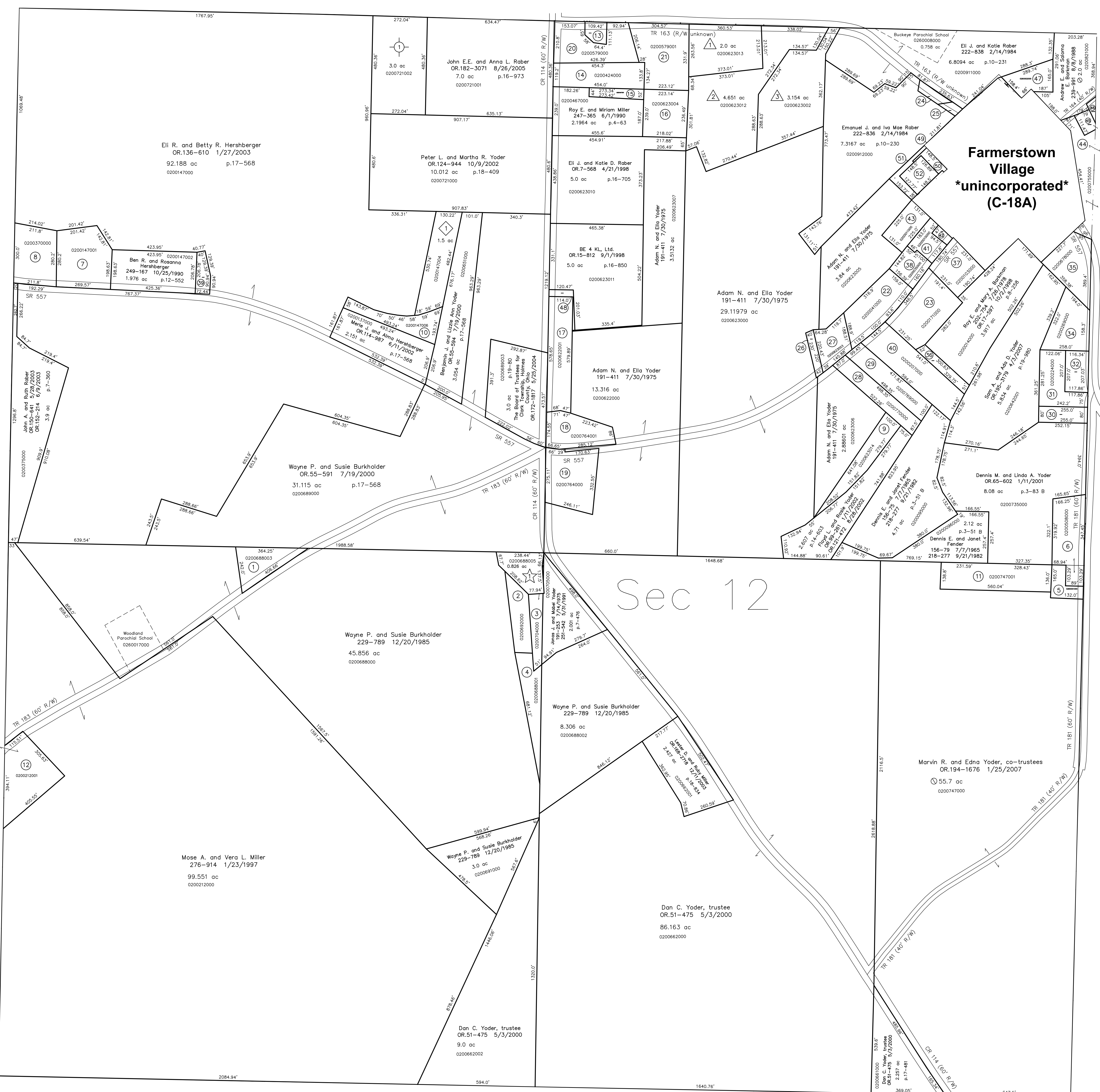
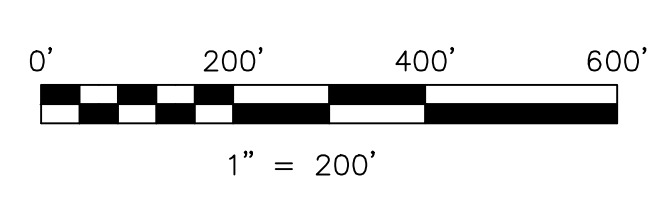


- 020068003 1 Wayne P. and Susie Burkholder
229-789 12/20/1985
1.0 ac
- 020069200 2 Wayne P. and Susie Burkholder
229-789 12/20/1985
0.816 ac
- 020070400 3 Jonas J. and Mabel Yoder
191-253 7/14/1975
251-542 5/31/1991
0.497 ac p.7-476
- 020068801 4 Wayne P. and Susie Burkholder
229-789 12/20/1985
1.821 ac
- 028000100 5 Trustees of Clark Township
106-2 7/29/1936
0.29 ac
- 020050800 6 Vernon M.C. and Mabel Yoder
238-205 5/27/1988
1.45 ac p.7-536
- 020014700 7 John R. and Martha Hershberger
243-278 9/6/1986
1.806 ac p.12-52
- 020037000 8 Ivan R. and Betty A. Hershberger
OR.127-649 11/6/2002
1.26 ac p.5-109
- 0200623014 9 Floyd L. and Rosie Yoder
OR.99-261 1/11/2002
OR.121-472 8/28/2002
1.0 ac p.18-151
- 020014700 10 Merie J. and Alma Hershberger
OR.114-987 6/11/2002
0.918 ac p.18-326
- 020074700 11 Jacob A. and Ermino M. Yoder
OR.181-2100 7/8/2005
1.75 ac p.14-590
- 020021200 12 Melvin A. and Mary Ann Miller
258-741 1/27/1993
1.648 ac p.14-140
- 020051400 13 Melvin A. and Susie R. Rober
OR.105-762 3/5/2002
0.236 ac
- 020042400 14 Monroe N. and Susie C. Miller
OR.111-670 5/1/2002
1.33 ac p.4-128
- 020046700 15 Monroe N. and Susie C. Miller
OR.111-670 5/1/2002
0.3036 ac p.10-882
- 0200623004 16 Monroe N. and Susie C. Miller
OR.111-670 5/1/2002
1.2038 ac p.10-882
- 020062200 17 Emanuel J. and Emma Schlabach
235-465 6/27/1987
OR.170-2714 3/19/2004
OR.170-2718 3/19/2004
1.5 ac p.10-754
- 020076400 18 John F. and Deborah K. Jorg
OR.171-718 4/5/2004
OR.171-991 4/7/2004
1.159 ac p.19-51
- 020076400 19 Jacob J. Jr. and Fannie Mae Keim
OR.188-1276 4/26/2006
1.709 ac p.19-31
- 020057900 20 John E.E. and Anna L. Rober
245-746 12/26/1989
1.5 ac p.7-176
- 020057900 21 BE 4 KL Ltd.
OR.53-653 12/6/2000
1.934 ac p.16-218
- 020004100 22 Emanuel J. and Fannie Yoder
216-692 4/5/1982
1.45 ac p.10-145
- 020017100 23 John F. and Deborah K. Jorg
213-79 5/26/1981
1.821 ac
- 020091200 24 Eli J. and Katie Rober
233-59 10/27/1986
0.1848 ac p.10-634
- 020091200 25 Eli J. and Katie Rober
251-459 5/23/1991
0.1 ac p.12-662
- 020062300 26 Mose M. and Mary A. Yoder
252-44 7/3/1991
0.204 ac p.12-699
- 020062300 27 Mose M. and Mary Yoder
237-569 12/26/1987
0.73 ac p.10-883
- 020077000 28 Roman A. and Betty Miller
254-132 1/14/1992
1.0 ac p.5-14
- 020076900 29 Roman A. and Betty Miller
254-132 1/14/1992
1.1 ac p.3-51 B
- 020036900 30 Mose M.E. and Esther M. Yoder
231-300 5/29/1986
0.468 ac p.3-1 B
- 020022400 31 Mary Lou Crowe
OR.133-569 11/20/2006
1.0 ac p.19-868
- 020019400 32 Lela Beachy
OR.167-1284 10/15/2003
0.556 ac p.18-763
- 020064100 33 Andy J.A. and Katie Ann Yoder
149-591 3/12/1963
0.93 ac
- 020026900 34 John L. and Edna J. Miller, as co-trustees
OR.199-3103 9/25/2007
1.24 ac p.4-70
- 020067800 35 Eli E. and Katie Yoder
OR.51-409 5/2/2000
1.3 ac
- 020020800 36 Roman A. and Betty Miller
254-132 1/14/1992
0.362 ac p.8-504
- 020010300 37 David D. and Carolyn Rober
OR.19-549 11/2/1998
1.0 ac
- 020003500 38 Nancy A. Becht
OR.144-168 12/29/2006
0.547 ac p.8-870
- 020014700 39 Ben R. and Rosanna Hershberger
OR.45-205 1/10/2000
0.31 ac p.17-357
- 020020700 40 Roman A. and Betty Miller
254-132 1/14/1992
1.88 ac
- 020001000 41 Moses E. and Marie M. Barkman
179-415 2/17/1972
251-428 5/20/1991
0.466 ac
- 026000600 42 Trustees of Clark Township
106-4 7/29/1936
0.12 ac
- 020001100 43 Moses E. and Marie M. Barkman
177-214 6/16/1971
251-428 5/20/1991
0.675 ac p.5-85
- 020075500 44 Farmerstown Livestock Auction, LLC
OR.198-351 7/2/2007
0.947 ac p.11-68
- 020075500 45 Levi M. and Fannie Yoder
257-1022 11/24/1992
0.187 ac p.14-91
- 020071900 46 Levi M. and Fannie Yoder
193-560 3/30/1976
256-646 8/10/1992
0.074 ac p.7-589
- 026000200 47 Farmerstown Cemetery
see Vol.1, Pg.28 of cemetery book in recorder's office
S.R. 5-310
- 0200623009 48 Emanuel J. and Emma Schlabach
OR.7-566 4/21/1998
OR.170-2714 3/19/2004
OR.170-2718 3/19/2004
0.128 ac p.16-705
- 020102100 49 Eli J. and Mattie Barkman
OR.200-2942 11/7/2007
0.07 ac p.19-1177
- 020091200 50 Emanuel J. and Iva Mae Rober
OR.200-2942 11/7/2007
0.165 ac p.19-1177
- 020091200 51 Emanuel J. and Iva Mae Rober
OR.200-2942 11/7/2007
0.434 ac p.19-1177
- 020091200 52 Emanuel J. and Iva Mae Rober
OR.200-2942 11/7/2007
0.434 ac p.19-1177



- △ Eli J. & Katie D. Rober Subdivision
Plat 17-561 Platted 7/17/2000
- Farmer's Ridge Subdivision
Plat 19-1216 Platted 12/28/2007
- ◇ D & F's Hillside Acres Subdivision
Plat 19-298 Platted 2/1/2005
- ☆ Valley Estates Subdivision
Plat 19-1034 Platted 5/25/2007
- △ 0200623013 Dan J. and Lovina Rober
OR.57-197 8/18/2000
2.0 ac p.17-561
- △ 0200623012 Eli J. and Katie D. Rober
OR.57-199 8/18/2000
4.651 ac p.17-561
- △ 0200623002 Daniel E. and Lena Rober
OR.57-195 8/18/2000
3.154 ac p.17-561
- ◇ 0200147004 Daniel J. and Fannie Hershberger
OR.179-89 3/24/2005
OR.183-1810 9/26/2005
1.5 ac p.19-298
- ☆ 0200688005 David J. and Naomi Yoder
OR.197-2650 6/15/2007
0.826 ac p.19-1034



LET IT BE KNOWN, THIS MAP HAS BEEN PREPARED AS A REFERENCE GUIDE TO PROPERTY OWNERSHIP. WE BELIEVE THIS INFORMATION TO BE CORRECT AND CURRENT, HOWEVER IT IS NOT INTENDED FOR ANY LEGAL USE, WHETHER IT BE IN SALES, TRANSFERS, TRUSTS, LEASES OF ANY TYPE, ETC., AND DO NOT ACCEPT RESPONSIBILITY FOR ERRORS OF ANY NATURE OR OMISSIONS CONTAINED HEREIN.

new survey required for next transfer

Last Revision: 12/28/2007
T-8, R-5, Sec.12
Clark Twp.
Holmes County, Ohio

C-18