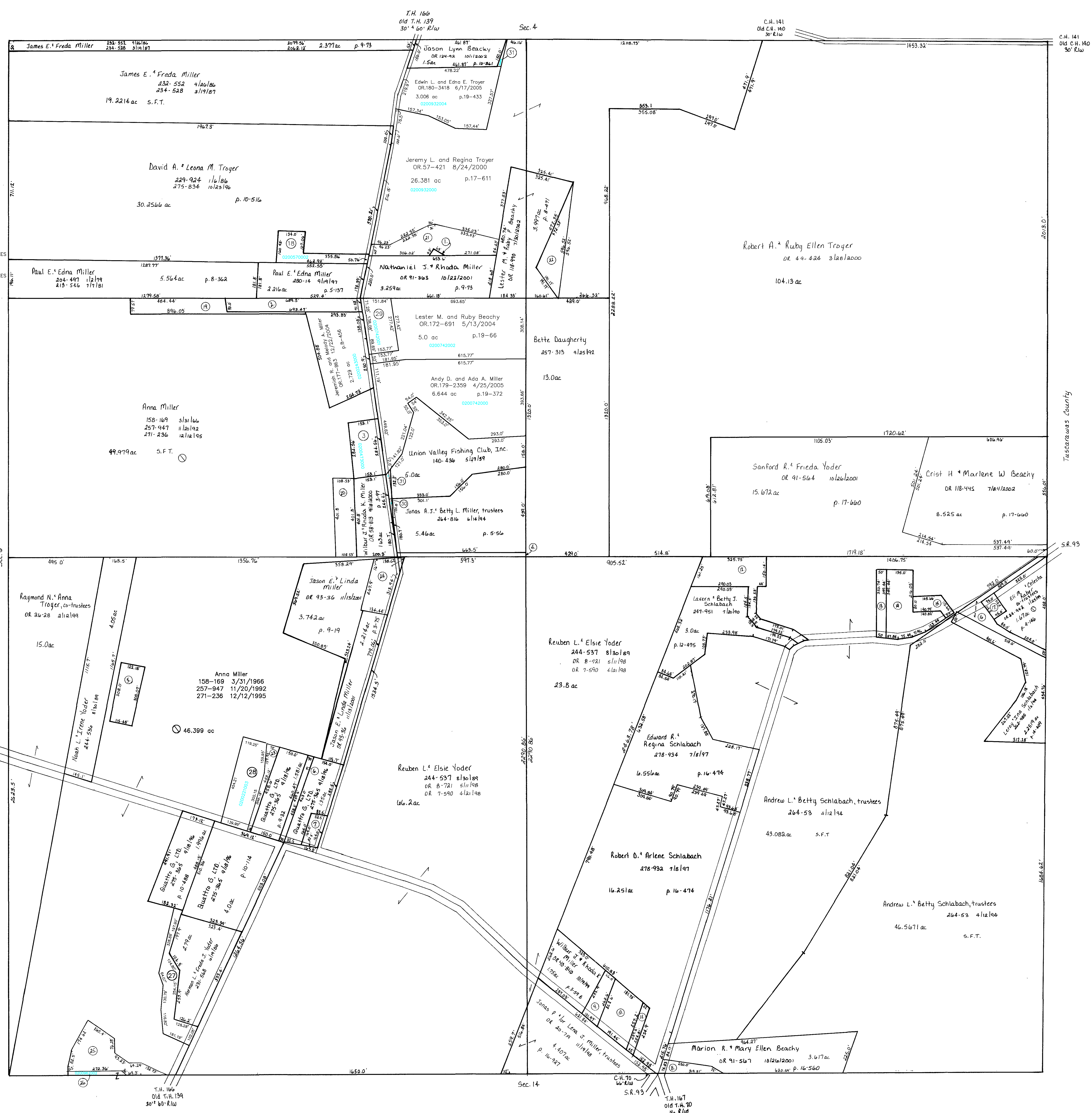


- 1 MILLER NATHANIEL J. AND RHODA
OR.0091-363 10/23/2001
0.032 ac p.12-837
- 2 MILLER PAUL E. AND EDNA
204-495 1/2/1979
213-546 7/7/1981
1.105 ac p.8-361
- 0200473000 3 M. Murray and Rachel M. Schlabach
OR.185-3280 1/3/2006
1.0 ac
- 4 DAUGHERTY BETTE
257-313 9/25/1992
0.28 ac
- 5 MILLER KAREN SUE AND WILMA MAE
275-463 9/25/1996
0.84 ac p.7-305
- 6 QUATTRO G. LTD.
275-365 9/18/1996
0.316 ac
- 7 QUATTRO G. LTD.
275-365 9/18/1996
0.313 ac
- 8 BEACHY MARION R. AND MARY ELLEN
OR.0056-208 8/1/2000
0.284 ac p.17-586
- 9 MILLER DAVID ALLEN AND ELVA J.
OR.0078-946 6/27/2001
0.48 ac p.5-51
- 10 MILLER DAVID A. AND ELVA J.
276-360 12/3/1996
1.067 ac
- 11 MILLER DAVID A. AND ELVA J.
276-360 12/3/1996
0.235 ac p.5-123
- 12 YODER SANFORD AND FRIEDA
243-474 5/24/1989
1.731 ac
- 13 SCHLABACH EDWIN R. AND DIANA S.
OR.0112-713 5/14/2002
0.4 ac p.8-295
- 14 SCHLABACH EDWIN R. AND DIANA S.
OR.0112-713 5/14/2002
1.38 ac p.5-94
- 15 SCHLABACH EDWIN R. AND DIANA S.
OR.0112-713 5/14/2002
0.351 ac p.13-672
- 16 RABER ELI M. AND CELESTA CO-TRUSTEES
OR.0024-944 1/25/1999
0.987 ac S.F.T.
- 17 RABER ELI M. AND CELESTA CO-TRUSTEES
OR.0024-944 1/25/1999
0.143 ac S.F.T.
- 0200570002 18 Joshua David and Amy Renee Troyer
OR.184-1296 10/28/2005
0.865 ac p.16-258
- 19 MILLER PAUL E. AND EDNA
278-299 5/20/1997
0.987 ac p.18-427
- 20 MILLER WILBUR J. AND RHODA K.
OR.0058-813 9/18/2000
1.0 ac p.17-316
- 21 BEACHY LESTER M. AND RUBY P.
OR.0118-990 7/30/2002
1.651 ac p.17-611
- 22 BEACHY LESTER M. AND RUBY P.
OR.0118-990 7/30/2002
0.877 ac p.17-611
- 23 QUATTRO G. LTD.
OR.0069-780 3/16/2001
0.348 ac p.17-813
- 24 MILLER MARRIETTA
OR.0093-34 11/13/2001
0.946 ac p.18-121
- 25 WENGERD MARILYN KAY
OR.0124-492 10/3/2002
1.268 ac p.18-400
- 26 MAST IVAN W. AND LEONA M.
OR.0167-3168 11/5/2003
0.13 ac p.18-783
- 27 Norman L. and Freda J. Yoder
OR.0163-858 6/12/2003
1.182 ac p.18-726
- 0200221003 28 QUATTRO G. LTD.
OR.0168-2755 12/10/2003
1.465 ac p.18-835
- 0200742001 29 Leroy M. and Freida Yoder
OR.0172-688 5/13/2004
1.0 ac p.19-66
- 0200742003 30 Andy D. and Ada A. Miller
OR.179-2359 4/25/2005
0.058 ac p.19-372
- 0200742004 31 Andy D. and Ada A. Miller
OR.179-2359 4/25/2005
0.02 ac p.19-372
- 0200932003 32 Jason Lynn Beachy
OR.180-3415 6/17/2005
0.027 ac p.19-433



Last Revision: 1/3/2006

T-8, R-4, Sec. 7
Clark Township

Holmes County, Ohio scale: 1"=200'

LET IT BE KNOWN, THIS MAP HAS BEEN PREPARED AS A REFERENCE GUIDE TO PROPERTY OWNERSHIP. WE BELIEVE THIS INFORMATION TO BE CORRECT AND CURRENT, HOWEVER, IT IS NOT INTENDED FOR ANY LEGAL USE, WHETHER IT BE IN SALES, TRANSFERS, TRADES, LEASES OF ANY TYPE, ETC., AND DO NOT ACCEPT RESPONSIBILITY FOR ERRORS OF ANY NATURE OR OMISSIONS CONTAINED HEREIN.

