

- 1 TROYER WILLIS M. AND MIRIAM A.  
OR.0116-967 7/5/2002  
0.47 ac p.5-62
- 2 BEACHY CLARA  
281-805 12/11/1997  
0.97 ac p.5-4
- 3 TROYER DELON V. AND ELIZABETH J.  
OR.0023-284 12/28/1988  
0.98 ac p.5-117
- 4 TROYER DELON V. AND ELIZABETH J.  
286-595 11/4/1994  
1.42 ac
- 5 MILLER WAYNE M. AND WILMA D.  
260-106 6/1/1993  
0.442 ac p.14-216
- 6 MILLER WAYNE M.  
247-789 7/2/1990  
1.58 ac p.6-7
- 7 YODER LAVERN J. AND DEBBIE S.  
220-616 6/10/1983  
1.08 ac p.5-12

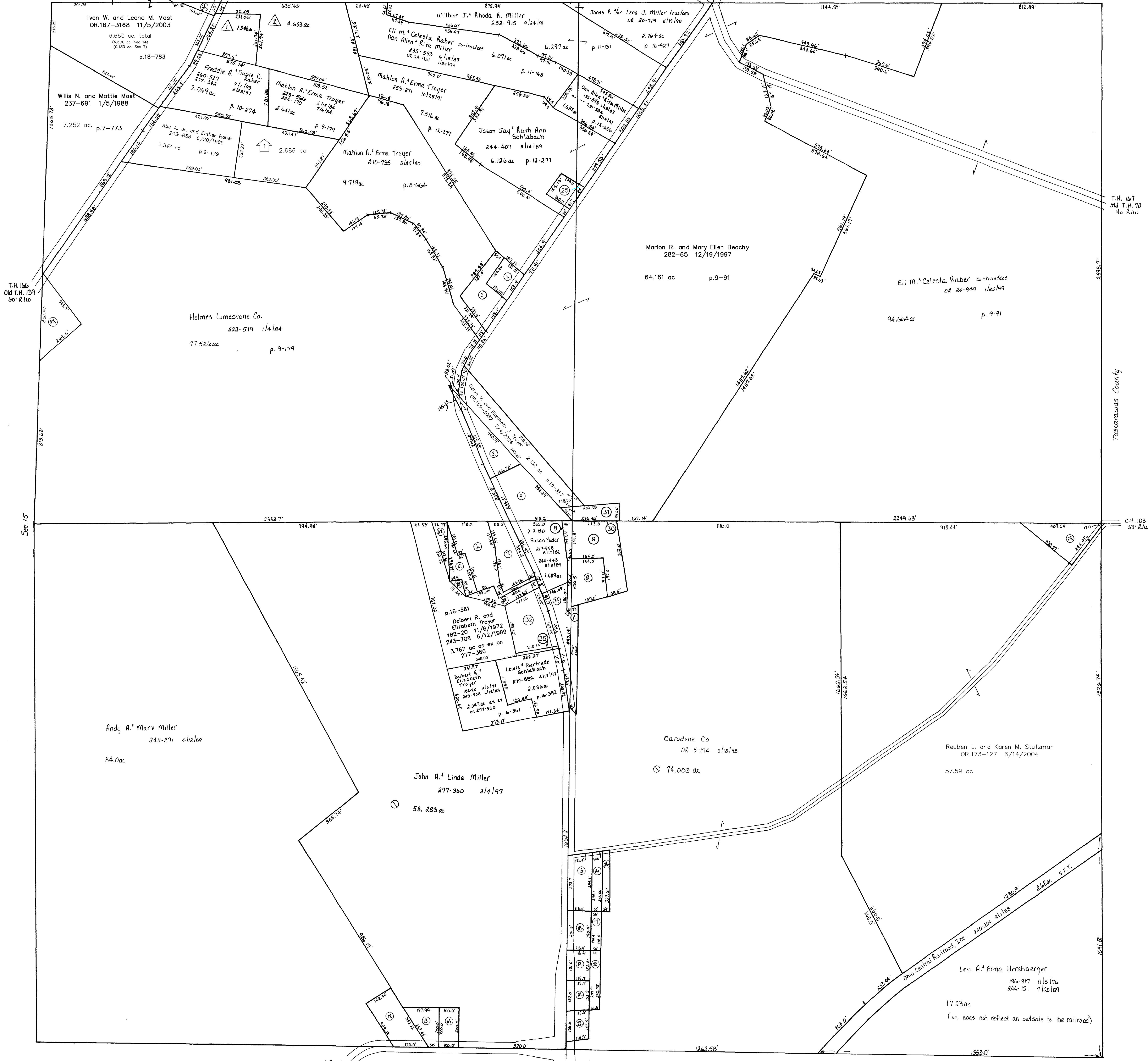
- 8 YODER DANIEL C. TRUSTEE  
OR.0169-2377 1/20/2004  
0.249 ac p.7-368
- 9 YODER DANIEL C. TRUSTEE  
OR.0169-2377 1/20/2004  
1.45 ac p.4-75
- 10 HERSHBERGER DONOVAN J. AND JODY E.  
202-234 6/6/1978  
0.837 ac
- 11 HERSHBERGER DONOVAN J. AND JODY E.  
202-234 6/8/1978  
0.4 ac
- 12 MAST JASON AND JANET  
OR.0094-374 11/27/2001  
1.0 ac p.14-295
- 13 MILLER ROBERT L.  
222-119 1/16/1983  
OR.0041-870 11/8/1999  
0.532 ac p.5-93

- 14 MILLER ROBERT L.  
180-878 7/17/1972  
0.459 ac p.5-142
- 15 KEIM WILLIAM R. AND EVA  
171-321 8/26/1989  
269-642 7/27/1995  
0.775 ac p.4-50
- 16 KEIM WILLIAM R. AND EVA  
196-149 10/19/1978  
382-853 12/29/1993  
269-642 7/27/1995  
0.342 ac p.7-718
- 17 SCHLABACH LEWIS AND GERTRUDE  
205-100 3/7/1979  
0.228 ac p.7-577
- 18 SCHLABACH LEWIS AND GERTRUDE  
205-100 3/7/1979  
0.535 ac
- 19 SCHLABACH MATTIE  
211-623 12/8/1980  
278-171 5/8/1997  
0.4 ac S.F.T.

- 20 SCHLABACH MATTIE  
211-623 12/8/1980  
278-171 5/8/1997  
0.339 ac p.7-577
- 21 SCHLABACH GERTRUDE  
OR.0021-402 11/30/1998  
0.4 ac
- 22 SCHLABACH GERTRUDE  
OR.0021-402 11/30/1998  
0.4 ac
- 23 BEACHY WILMA  
247-941 7/19/1990  
1.0 ac p.12-476
- 24 HERSHBERGER DONOVAN J. AND JODY D.  
0.923 ac p.14-720
- 25 Jason Jay and Ruth Ann Schlabach  
267-907 3/17/1995  
OR.178-1358 2/22/2005  
OR.178-2709 3/15/2005  
0.402 ac p.14-764

- 26 KEIM WILLIAM R. AND EVA  
271-700 1/19/1996  
0.255 ac p.16-4
- 27 MILLER WAYNE M. AND WILMA D.  
277-357 3/4/1997  
0.256 ac p.16-361
- 28 MILLER WAYNE M. AND WILMA D.  
277-357 3/4/1997  
0.06 ac p.16-361
- 29 MILLER WAYNE M. AND WILMA D.  
277-357 3/4/1997  
0.329 ac p.16-361
- 30 YODER DANIEL C. TRUSTEE  
OR.0169-2377 1/20/2004  
0.006 ac p.16-886

- 31 YODER DANIEL C. TRUSTEE  
OR.0169-2377 1/20/2004  
0.468 ac p.16-958
- 32 SCHLABACH LEWIS AND GERTRUDE  
OR.0175-3128 10/29/2004  
1.303 ac p.17-310
- 33 TROYER EDWIN D. AND ANNA H.  
OR.0093-711 11/20/2001  
1.0 ac p.18-127
- 34 HENGERD MARILYN KAY  
OR.0124-482 10/3/2002  
0.13 ac p.18-400
- 35 SCHLABACH LEWIS AND GERTRUDE  
OR.0169-499 12/30/2003  
0.63 ac p.17-310



- Union Valley Hilltop View Allotment No.1  
Plot 15-73 Platted 12/19/1995
- MILLER JAY E. AND WANDA L.  
272-586 3/14/1996  
1.346 ac
- STOLZFUS BENJEL RAY AND JULIA ANN  
271-340 12/18/1995  
4.653 ac

- Mabee Subdivision  
Plot 19-266 Platted 12/7/2004
- Marvin A. and Regina A. Rober  
OR.179-3047 5/3/2005  
2.686 ac

Last Revision: 5/3/2005

T-8, R-4, Sec. 14  
Clark Township  
Holmes County, Ohio scale: 1"=200'

LET IT BE KNOWN, THIS MAP HAS BEEN PREPARED AS A REFERENCE GUIDE TO PROPERTY OWNERSHIP. WE BELIEVE THIS INFORMATION TO BE CORRECT AND CURRENT, HOWEVER, IT IS NOT INTENDED FOR ANY LEGAL USE, WHETHER IT BE IN SALES, TRANSFERS, TRADES, LEASES OF ANY TYPE, ETC., AND DO NOT ACCEPT RESPONSIBILITY FOR ERRORS OF ANY NATURE OR OMISSIONS CONTAINED HEREIN.

