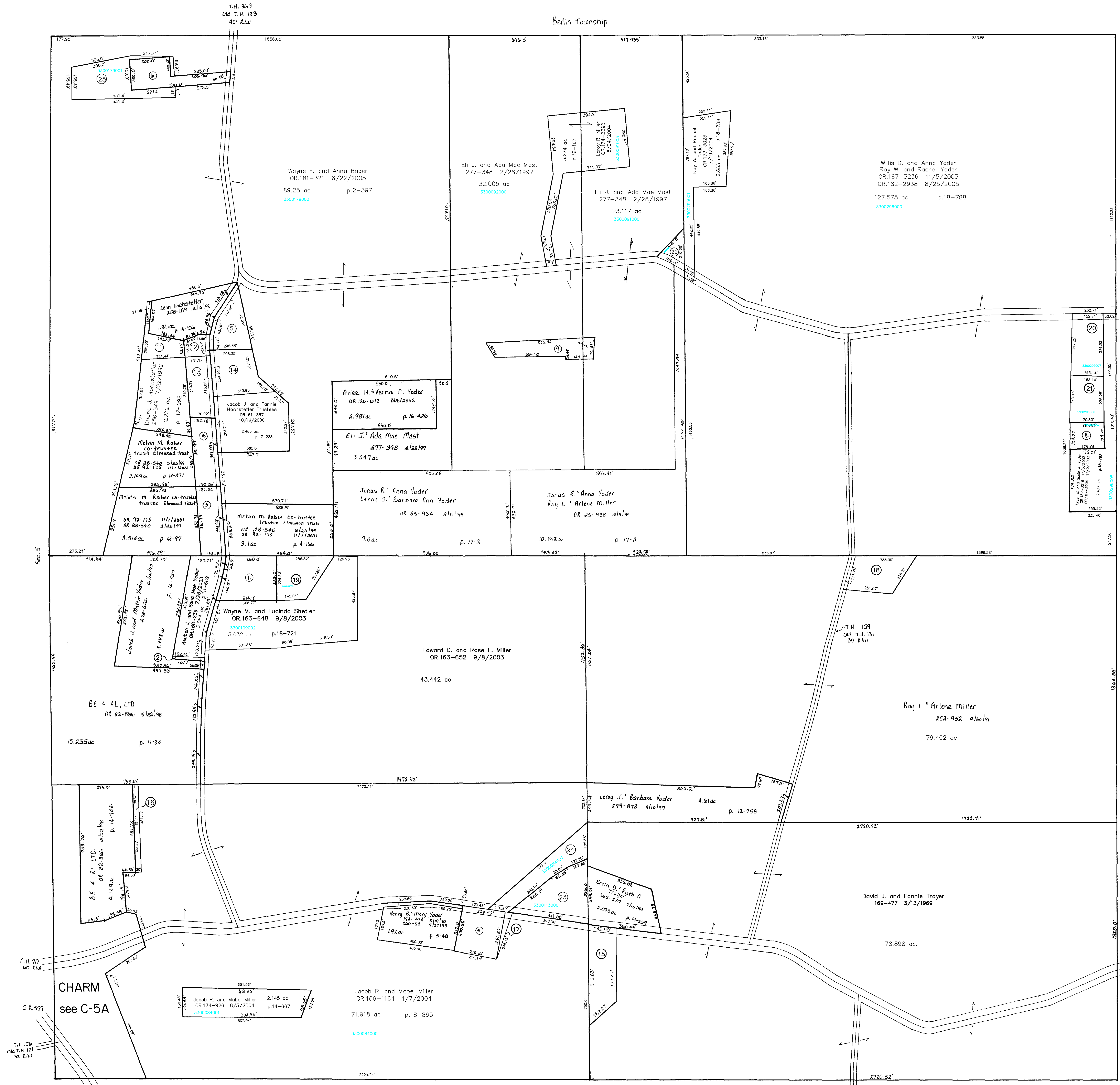


Berlin Township



T.H. 156 (old T.H. 152)
is impossible and does
not appear on the aerial.
It is somewhere in this area.

T.H. 157
Old T.H. 429
No. Elw record

T.H. 159
Old T.H. 151
30' Elw

C.H. 70
60' Elw

C.H. 70
60' Elw

- 1 RABER MELVIN M. TRUSTEE ELMWOOD TRUST
OR.0028-540 3/26/1999
OR.0092-175 11/1/2001
1.5 ac p.4-166
- 2 YODER JACOB J. AND MATTIE
187-622 6/21/1974
228-978 10/7/1985
0.075 ac p.7-282
- 3 RABER MELVIN M. TRUSTEE ELMWOOD TRUST
OR.0028-540 3/26/1999
OR.0092-175 11/1/2001
1.07 ac p.7-436
- 4 HOCHSTETLER DUANE J.
256-288 7/20/1992
1.07 ac p.7-436
- 5 JACOB J. HOCHSTETLER FAMILY
PROPERTIES, LLC
OR.0133-236 12/19/2002
1.028 ac p.18-486
- 6 RABER WAYNE H. AND LIZZIE ANN
280-571 7/6/1993
1.037 ac p.14-248
- 7 AMISH HELPING FUND
277-407 3/6/1997
0.74 ac p.16-17
- 8 YODER ERVIN W. AND SUSIE J.
OR.0167-3216 11/5/2003
OR.0167-3239 11/5/2003
0.512 ac p.18-786
- 9 MAST JOHN HENRY AND LENA D.
OR.0020-836 11/18/1998
1.013 ac p.16-126
- 10 YODER HENRY B. AND MARY
OR.0028-332 3/24/1999
1.188 ac p.17-40
- 11 HOCHSTETLER LEON
OR.0133-233 12/19/2002
0.609 ac p.18-486
- 12 HOCHSTETLER LEON
OR.0133-230 12/19/2002
0.301 ac p.18-486
- 13 HOCHSTETLER DUANE J.
OR.0133-227 12/19/2002
0.941 ac p.18-486
- 14 JACOB J. HOCHSTETLER FAMILY
PROPERTIES, LLC
OR.0133-236 12/19/2002
1.27 ac p.18-486
- 15 TROYER ERVIN D. AND RUTH A.
OR.0157-486 7/21/2003
1.449 ac p.18-682
- 16 BE & K.L. LTD.
OR.0156-69 7/9/2003
OR.0167-3239 11/5/2003
0.311 ac p.18-669
- 17 YODER HENRY B. AND MARY
OR.0156-67 7/9/2003
0.087 ac p.18-668
- 18 MILLER ALLEN R. AND ALTA
OR.163-479 9/5/2003
1.228 ac p.18-719
- 19 RABER MELVIN M. TRUSTEE OF
THE ELMWOOD TRUST
OR.0167-2193 10/28/2003
1.088 ac p.18-775
- 20 YODER WILLIS D. AND ANNA
OR.0167-3231 11/5/2003
1.167 ac p.18-786
- 21 YODER ERVIN W. AND SUSIE J.
OR.0167-3229 11/5/2003
OR.0167-3239 11/5/2003
0.917 ac p.18-786
- 22 YODER ROY W. AND RACHEL
OR.0173-3023 7/19/2004
0.316 ac p.18-786
- 23 David R. and Mary Miller
OR.178-2474 3/31/2005
1.722 ac p.12-917
- 24 David R. and Mary Miller
OR.180-2510 6/8/2005
1.364 ac p.19-423
- 25 Wayne H. and Lizzie Ann Rober
OR.181-318 6/22/2005
1.714 ac p.2-397

Last Revision: 8/25/2005

T-8, R-5, Sec. 4
Clark Township

Holmes County, Ohio scale: 1" = 200'

LET IT BE KNOWN, THIS MAP HAS BEEN PREPARED AS A REFERENCE GUIDE TO PROPERTY OWNERSHIP AND CURRENT. HOWEVER, IT IS NOT INTENDED FOR ANY LEGAL USE, WHETHER IT BE IN SALES, TRANSFERS, TRUSTS, LEASES OF ANY TYPE, ETC., AND DO NOT ACCEPT RESPONSIBILITY FOR ERRORS OF ANY NATURE OR OMISSIONS CONTAINED HEREIN.

C-10