

- 1 YODER WILLIS A. AND BARBARA ANN
251-630 6/7/1991
0.119 ac p.12-971
- 2 YODER WYMAN L. AND MILMA H.
273-518 5/16/1996
0.516 ac S.F.T.
- 3 YODER WYMAN L. AND MILMA H.
273-518 5/16/1996
0.4 ac S.F.T.
- 4 YODER WYMAN L. AND MILMA H.
OR.0128-154 11/8/2002
0.814 ac p.18-429
- 5 TROYER ROMAN J. AND MARY
155-207 3/27/1985
217-458 6/29/1994
0.52 ac

- 6 YODER ABE J.
OR.0172-2443 6/1/2004
OR.0172-3050 6/7/2004
1.62 ac p.14-85
- 7 David W. Yoder
OR.179-67 3/24/2005
0.108 ac S.F.T.
- 8 David W. Yoder
OR.179-67 3/24/2005
0.292 ac S.F.T.
- 9 Benjamin A. and Fannie V. Miller
OR.180-2076 6/2/2005
0.09 ac p.8-14
- 10 Benjamin A. and Fannie V. Miller
OR.180-2076 6/2/2005
0.32 ac p.8-15

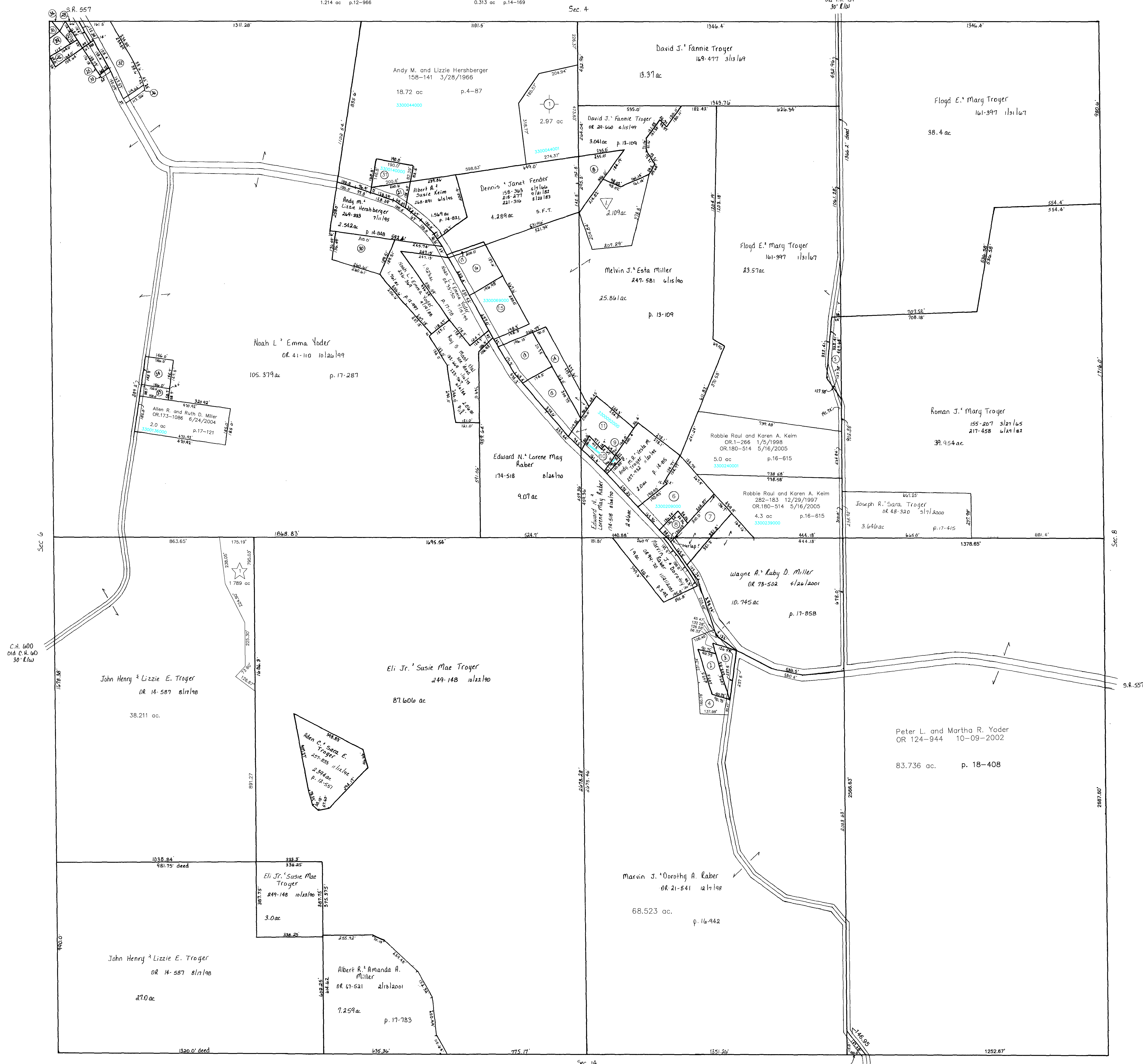
- 11 Benjamin A. and Fannie V. Miller
OR.180-2076 6/2/2005
1.31 ac p.8-15
- 12 RABER DAVID A.
164-62 9/8/1967
166-102 8/18/1969
255-154 4/13/1992
OR.0026-721 2/23/1999
1.1 ac p.4-148
- 13 RABER ADEN J. AND CLARA A.
236-222 8/18/1987
0.925 ac p.2-125
- 14 RABER ADEN J. AND CLARA A.
236-222 8/18/1987
0.79 ac p.4-167
- 15 Harold R. and Esther D. Keim
255-979 6/17/1992
OR.182-904 8/16/2005
1.214 ac p.12-966

- 16 KEIM ALBERT A. AND SUSIE A.
163-231 7/19/1967
0.928 ac p.2-125
- 17 KEIM ALBERT A. AND SUSIE A.
264-742 8/8/1994
0.069 ac p.14-527
- 18 FENDER DENNIS AND JANET
158-363 5/7/1986
218-277 9/21/1982
221-316 8/22/1983
0.8 ac
- 19 Not used
- 20 Not used
- 21 HERSHBERGER ANDY M. AND LIZZIE
259-192 3/16/1993
0.313 ac p.14-169

- 22 Not used
- 23 ERB ALBERT J. AND VERDA
150-300 6/3/1963
0.202 ac p.3-5 B
- 24 ERB ALBERT J. AND VERDA
150-300 6/3/1963
0.49 ac
- 25 MILLER AMANDA A. TRUSTEE
OR.0063-307 11/30/2000
0.23 ac
- 26 GUGGSBERG ERIC A.
274-923 8/23/1996
0.2 ac S.F.T.
- 27 GUGGSBERG ERIC A.
274-923 8/23/1996
0.105 ac S.F.T.

- 28 GUGGSBERG ERIC A.
274-923 8/23/1996
0.25 ac S.F.T.
- 29 GUGGSBERG ERIC A.
OR.0039-979 10/5/1999
0.165 ac p.17-259
- 30 YODER NOAH L. AND EMMA
267-427 1/27/1995
1.049 ac p.14-715
- 31 Andy M. and Lizzie Hershberger
OR.181-658 6/27/2005
0.5 ac p.19-437

- 32 MILLER EMMA
OR.0020-81 11/12/1998
1.165 ac p.16-914
- 33 MILLER AMANDA A. TRUSTEE
OR.0063-405 11/30/2000
0.024 ac p.17-259
- 34 EAST HOLMES LOCAL BOARD OF EDUCATION
OR.0039-981 10/5/1999
0.035 ac p.17-259
- 35 EAST HOLMES LOCAL BOARD OF EDUCATION
OR.0039-977 10/5/1999
0.058 ac p.17-259
- 36 MILLER EMMA
OR.0041-118 10/26/1999
0.075 ac p.17-259



- ★ Charm View Subdivision
Plot 18-462 Platted 12/9/2002
- ★ TROYER JOHN HENRY AND LIZZIE E.
OR.0145-655 4/16/2003
1.789 ac
- ★ Pine Tree Grove Subdivision
Plot 19-127 Platted 7/16/2004
- ★ HERSHBERGER DAVID A. AND MIRIAM
OR.0174-1758 8/16/2004
2.97 ac
- ★ Sunny Slope Subdivision
Plot 18-67 Platted 8/31/2001
- ★ MILLER ADEN RAY AND ESTHER
OR.0087-855 9/19/2001
2.109 ac

Last Revision: 8/16/2005
 T-8, R-5, Sec. 7
 Clark Township
 Holmes County, Ohio scale: 1" = 200'

LET IT BE KNOWN, THIS MAP HAS BEEN PREPARED AS A REFERENCE GUIDE TO PROPERTY OWNERSHIP. WE BELIEVE THIS INFORMATION TO BE CORRECT AND CURRENT. HOWEVER, IT IS NOT INTENDED FOR ANY LEGAL USE, WHETHER IT BE IN SALES, TRANSFERS, TRADES, LEASES OF ANY TYPE, ETC., AND DO NOT ACCEPT RESPONSIBILITY FOR ERRORS OF ANY NATURE OR OMISSIONS CONTAINED HEREIN.

