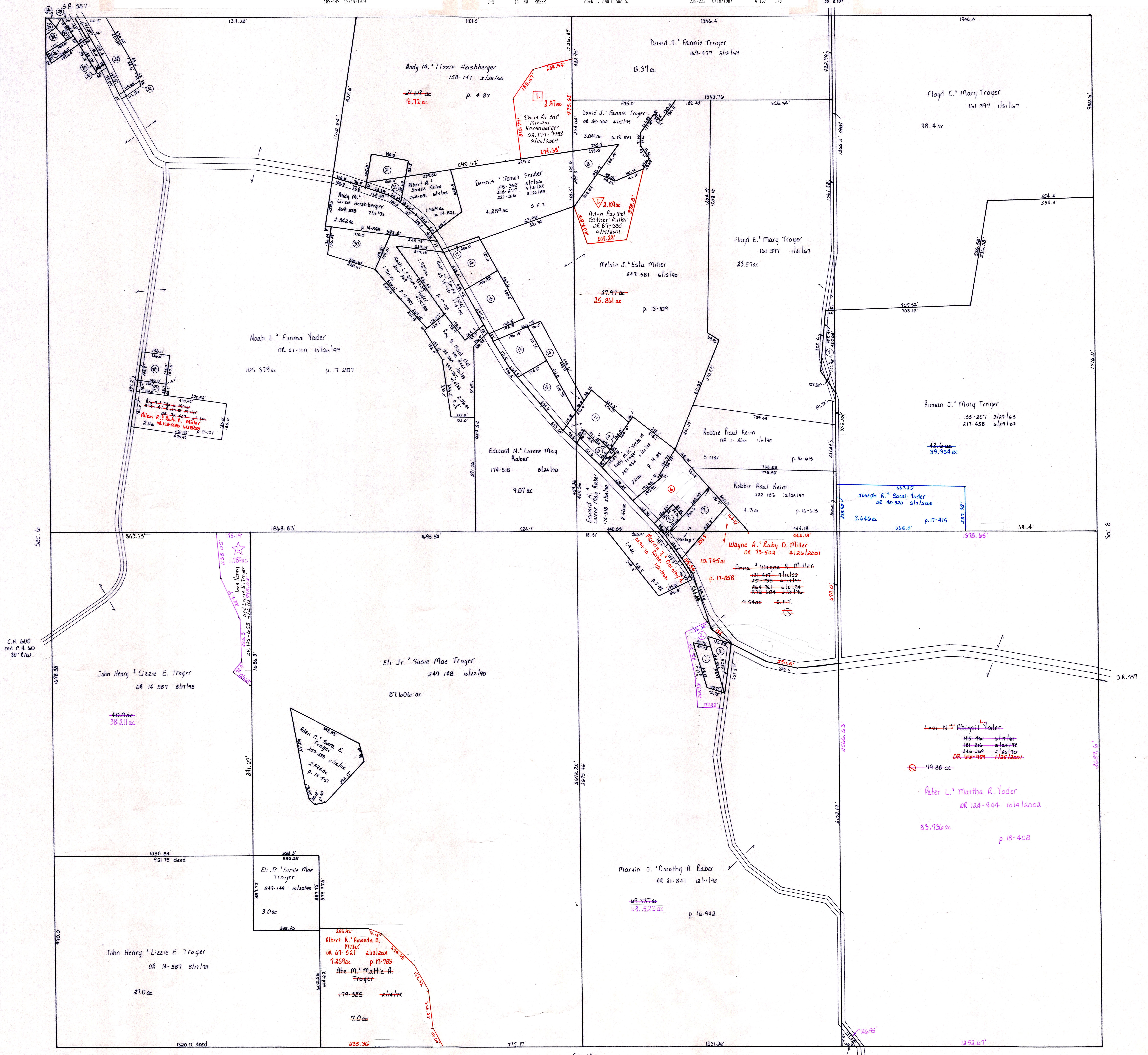


Map Page	Ref	1/4	Last Name	First Name	Deed and Date	Plat	Acres
C-9	1	SE	YODER	WILLIS A. AND BARBARA ANN	251-630 6/7/1991	12-671	.119
C-9	2	SE	YODER	WYMAN L. AND WILMA H.	273-518 5/16/1996	S.F.T.	.516
C-9	3	SE	YODER	WYMAN L. AND WILMA H.	273-518 5/16/1996	S.F.T.	.4
C-9	4	SE	YODER	WYMAN L. AND WILMA H.	OR.0128-154 11/8/2002	18-429	.814
C-9	5	NE	TROYER	EDMAN J. AND MARY	155-207 3/27/1985		.52
C-9	6	NE	Yoder	Abc. S.	OR.172-2495 4/1/2004 OR.172-2495 4/1/2004	p.185	1.62
C-9	7	NE	SCHERER	LESTER A.	134-228 6/25/1987 189-425 12/19/1974 189-442 12/19/1974		1.08

C-9	8	NE	SCHERER	LESTER A.	171-257 8/16/1989 189-439 12/19/1974 189-442 12/19/1974		.262
C-9	9	NE	HAST	DANNY H. AND MABEL A.	OR.0004-24 2/27/1998		.06
C-9	10	NE	HAST	DANNY H. AND MABEL A.	OR.0004-24 2/27/1998		.32
C-9	11	NE	HAST	DANNY H. AND MABEL A.	OR.0004-24 2/27/1998		1.21
C-9	12	NW	RABER	DAVID A.	164-62 9/8/1967 166-502 5/18/1969 255-154 4/13/1992 OR.0006-727 2/23/1999		1.1
C-9	13	NW	RABER	ADEN J. AND CLARA A.	238-222 8/18/1987		.925
C-9	14	NW	RABER	ADEN J. AND CLARA A.	238-222 8/18/1987		.79

C-9	15	NW	KEIM	ESTHER D.	235-279 6/17/1992		1.214
C-9	16	NW	KEIM	ALBERT A. AND SUSIE A.	163-231 7/19/1967		.928
C-9	17	NW	KEIM	ALBERT A. AND SUSIE A.	264-742 6/8/1994		.059
C-9	18	NE	FENDER	DENNIS AND JANET	158-363 5/7/1966 218-277 9/21/1982 221-316 8/22/1983		.8
C-9	19						
C-9	20						
C-9	21	NW	HERSBERGER	ANDY M. AND LIZZIE	239-192 3/16/1992		.313

T.H. 159
Old T.H. 131
30' E/W



▽ Sunny Slope Subdivision
Plat 18-67 Platted 6/12/2004 C-9A

☆ Charm View Subdivision C-9A
Plat 18-66A Platted 12/12/2002

□ Pine Tree Grove Subdivision C-9A
Plat 19-121 Platted 7/11/2004

Map Page	Ref	1/4	Last Name	First Name	Deed and Date	Plat	Acres
C-9	22						
C-9	23	NW	ERB	ALBERT J. AND VERDA	150-300 6/3/1963	3-5-B	.202
C-9	24	NW	ERB	ALBERT J. AND VERDA	150-300 6/3/1963		.49
C-9	25	NW	MILLER	AMANDA A. TRUSTEE	OR.0063-207 11/30/2000		.23
C-9	26	NW	BUBBISBERG	ERIC A.	274-923 8/23/1996	S.F.T.	.2
C-9	27	NW	BUBBISBERG	ERIC A.	274-923 8/23/1996	S.F.T.	.105
C-9	28	NW	BUBBISBERG	ERIC A.	274-923 8/23/1996	S.F.T.	.25

C-9	29	NW	BUBBISBERG	ERIC A.	OR.0029-979 10/5/1999	17-259	.166
C-9	30	NW	YODER	NOAH L. AND EMMA	267-427 1/27/1995	14-715	1.049
C-9	31	NW	MILLER	LIVIA J.	151-140 9/17/1963	S.F.T.	.558
C-9	32	NW	MILLER	EMMA	OR.0020-91 11/12/1998	16-914	1.165
C-9	33	NW	MILLER	AMANDA A. TRUSTEE	OR.0063-405 11/30/2000	17-259	.024
C-9	34	NW	EAST	HOLMES LOCAL BOARD OF EDUCATION	OR.0029-981 10/5/1999	17-259	.025
C-9	35	NW	EAST	HOLMES LOCAL BOARD OF EDUCATION	OR.0029-977 10/5/1999	17-259	.058
C-9	36	NW	MILLER	EMMA	OR.0041-118 10/26/1999	17-259	.075

T-8, R-5, Sec. 7
Clark Township

Holmes County, Ohio scale: 1" = 200'

LET IT BE KNOWN, THIS MAP HAS BEEN PREPARED AS A REFERENCE GUIDE TO PROPERTY OWNERSHIP. WE BELIEVE THIS INFORMATION TO BE CORRECT AND CURRENT, HOWEVER, IT IS NOT INTENDED FOR ANY LEGAL USE, WHETHER IT BE IN SALES, TRANSFERS, TRADES, LEASES OF ANY TYPE, ETC., AND DO NOT ACCEPT RESPONSIBILITY FOR ERRORS OF ANY NATURE OR OMISSIONS CONTAINED HEREIN.

