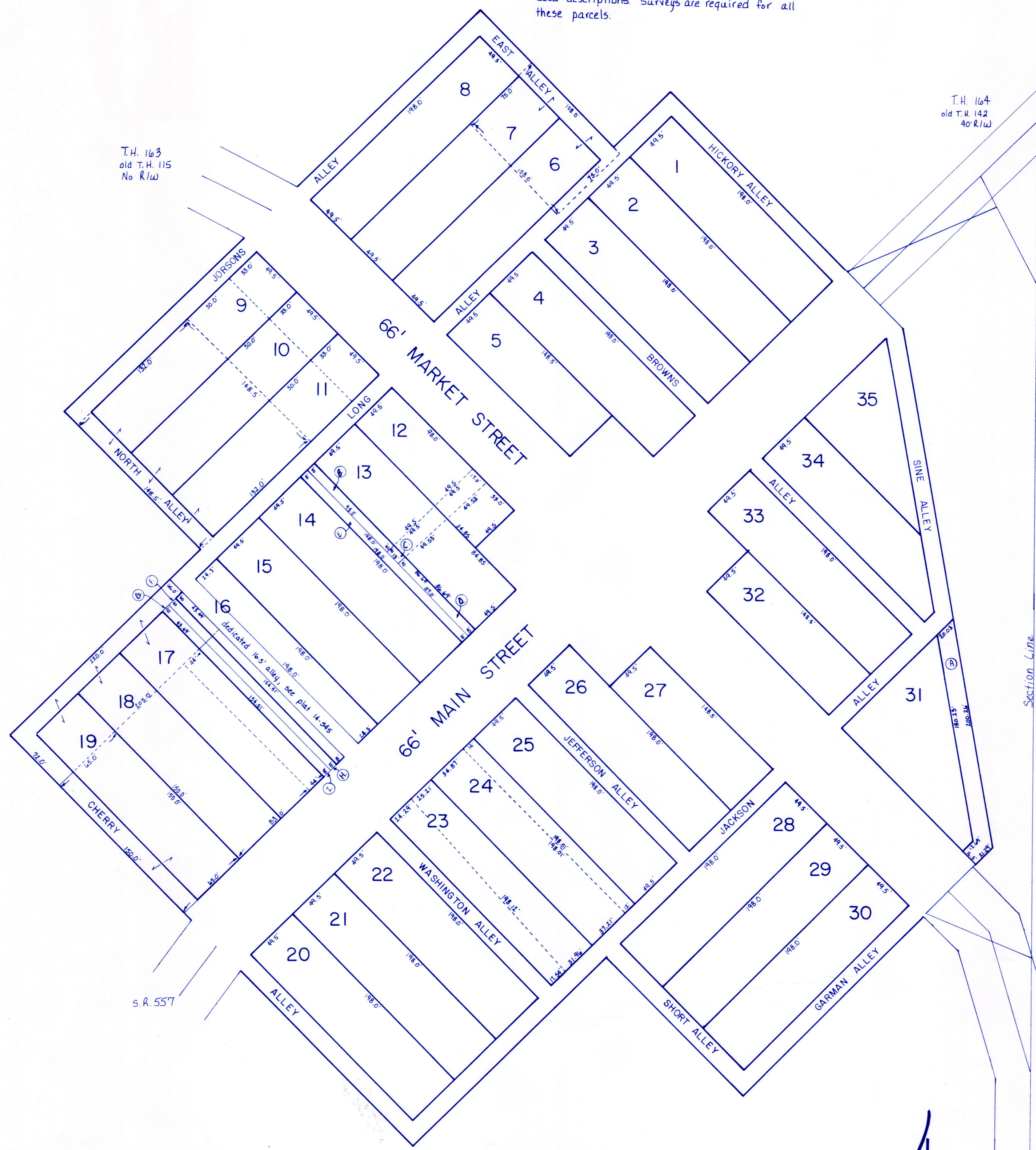


Village of Farmerstown
see deed vol. I, pg. 188 for plat
platted as the Town of Farmersville

Alleys are 16.5' wide. Some alleys are not vacated on record, but nonetheless are covered by current deed descriptions. Surveys are required for all these parcels.



T.H. 163
old T.H. 115
No R.W.

T.H. 164
old T.H. 152
40 R.W.

S.R. 557

S.R. 557

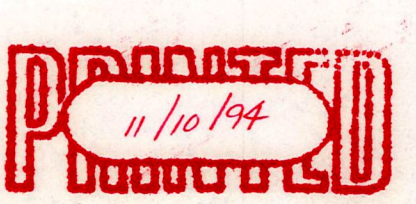
1	Alvin H. Lucinda Schlabach			401-404 230-907	4/14/78 4/18/86
2	Alvin H. Lucinda Schlabach			201-404 230-907	4/14/78 4/18/86
3	Alvin H. Lucinda Schlabach			230-905 230-907	4/18/86 4/18/86
4	Alvin H. Lucinda Schlabach			230-905 230-907	4/18/86 4/18/86
5	Alvin H. Lucinda Schlabach			230-905 230-907	4/18/86 4/18/86
6	Abe J. Sarah Haber	S.F.T.	W pt.	401-435	4/14/78
6	Abe J. Sarah Haber	S.F.T.	E pt.	401-435	4/14/78
7	Abe J. Sarah Haber	S.F.T.	W pt.	401-435	4/14/78
7	Abe J. Sarah Haber	S.F.T.	E pt.	401-435	4/14/78
8	Abe J. Sarah Haber			247-831	7/10/90
9	Eli J. Mattie Barkman	includes pt. alley S.F.T.	W pt.	122-149 227-106	3/14/49 5/17/85
9	Eli J. Mattie Barkman	S.F.T.	Mid pt.	122-149 227-106	3/14/49 5/17/85
9	Emanuel J. Iva Mae Haber		E pt.	252-641	4/15/91
10	Eli J. Mattie Barkman	includes pt. alley S.F.T.	W pt.	122-149 227-106	3/14/49 5/17/85
10	Eli J. Mattie Barkman	S.F.T.	Mid pt.	122-149 227-106	3/14/49 5/17/85
10	Emanuel J. Iva Mae Haber		E pt.	252-641	4/15/91
11	Eli J. Mattie Barkman	includes pt. alley S.F.T.	W pt.	122-149 227-106	3/14/49 5/17/85
11	Eli J. Mattie Barkman	S.F.T.	Mid pt.	122-149 227-106	3/14/49 5/17/85
11	Emanuel J. Iva Mae Haber		E pt.	252-641	4/15/91
12	Farmerstown Investors	.111 ac p. 13-3	N pt.	253-36	10/4/91
12	Farmerstown Investors	.018 ac p. 13-3	Mid pt.	253-36	10/4/91
12	Jay E. Wanda L. Miller	.039 ac p. 12-729	S pt.	252-471	8/13/91
13	Farmerstown Investors	.111 ac p. 13-3	N pt.	253-36	10/4/91
13	Farmerstown Investors	.018 ac p. 13-3	Mid pt.	253-36	10/4/91
13	Jay E. Wanda L. Miller	.039 ac p. 12-729	S pt.	252-471	8/13/91
14	Roman A. Edna Mae Stutzman			253-379	11/8/91
15	Roman A. Edna Mae Stutzman			253-379	11/8/91
16	Balco Machine, Inc.	.031 ac p. 14-512	SW pt.	264-484	3/17/94
16	Roman A. Edna Mae Stutzman	.111 ac p. 12-513	E pt.	253-379	11/8/91
16	Trustees of Clark Township	.009 ac p. 14-512	NE pt.	264-479	3/17/94
16	dedicated & accepted for road purposes	.075 ac	Mid pt.	p. 14-545	4/24/94
17	Balco Machine, Inc.	S.F.T.	SE pt.	193-266	2/21/76
17	Balco Machine, Inc.		SW pt.	158-485	4/12/66
17	Board of Township Trustees of Clark Township	S.F.T.	N pt.	134-120	3/25/57
18	Balco Machine, Inc.		S pt.	158-485	4/12/66
18	Board of Township Trustees of Clark Township	S.F.T.	N pt.	134-120	3/25/57
19	Gerber & Sons, Inc.		S pt.	221-159	8/15/83
19	Board of Township Trustees of Clark Township	S.F.T.	N pt.	134-120	3/25/57
20	Atlee Hostetler - see card			40-224	4/13/66
21	Roy A. Cindy Miller			240-681	4/21/88
22	Roy A. Cindy Miller			240-681	4/21/88

23	Roman D. Susie Miller	.129 ac p. 9-44	E pt.	218-301	11/5/82
23	Roy A. Cindy Miller		W pt.	240-681	4/21/88
24	Amanda D. Troyer	.061 ac p. 9-44	E pt.	221-310	8/19/83
24	Roman D. Susie Miller	.163 ac p. 9-44	W pt.	175-148 218-301	11/9/70 11/5/82
25	Amanda D. Troyer	.225 ac p. 9-44		221-310	8/19/83
26	Eli J. Mattie Barkman			122-149 227-106	3/14/49 5/17/85
27	Roy E. Mary Barkman			199-526	4/9/77
28	Emanuel H. Fannie E. Yoder			147-98 231-211	11/2/62 5/20/86
29	Emanuel H. Fannie E. Yoder			147-98 231-211	11/2/62 5/20/86
30	Emanuel H. Fannie E. Yoder			147-98 231-211	11/2/62 5/20/86
31	Producers Livestock Association			231-511	4/18/86
32	Robert W. Andrews			233-874	12/30/86
33	Robert W. Andrews			233-874	12/30/86
34	Robert W. Andrews			233-874	12/30/86
35	Robert W. Andrews			233-874	12/30/86

	unnumbered parcels	ac.		
A	Producers Livestock Association	p. 11-78 .078	231-511	4/18/86
B	Farmerstown Investors	p. 13-3 .019	253-36	10/4/91
C	Farmerstown Investors	p. 13-3 .003	253-36	10/4/91
D	Jay E. Wanda L. Miller	p. 12-729 .016	252-471	8/13/91
E	Roman A. Edna Mae Stutzman	p. 12-513 .038	253-379	11/8/91
F	Trustees of Clark Township	p. 14-525 .008		
G	Board of Township Trustees of Clark Township	p. 14-525 .008		
H	Balco Machine, Inc.	p. 14-525 .029		
I	Balco Machine, Inc.	p. 14-525 .029		
J				
K				
L				

LET IT BE KNOWN, THIS MAP HAS BEEN PREPARED AS A REFERENCE GUIDE TO PROPERTY OWNERSHIP. WE BELIEVE THIS INFORMATION TO BE CORRECT AND CURRENT. HOWEVER, IT IS NOT INTENDED FOR ANY LEGAL USE, WHETHER IT BE IN SALES, TRANSFERS, TRADES, LEASES OF ANY TYPE, ETC., AND DO NOT ACCEPT RESPONSIBILITY FOR ERRORS OF ANY NATURE OR OMISSIONS CONTAINED HEREIN.

unincorporated
FARMERSTOWN VILLAGE
T-8, R-5, Sec. 12 scale: 1" = 50'



C-18A