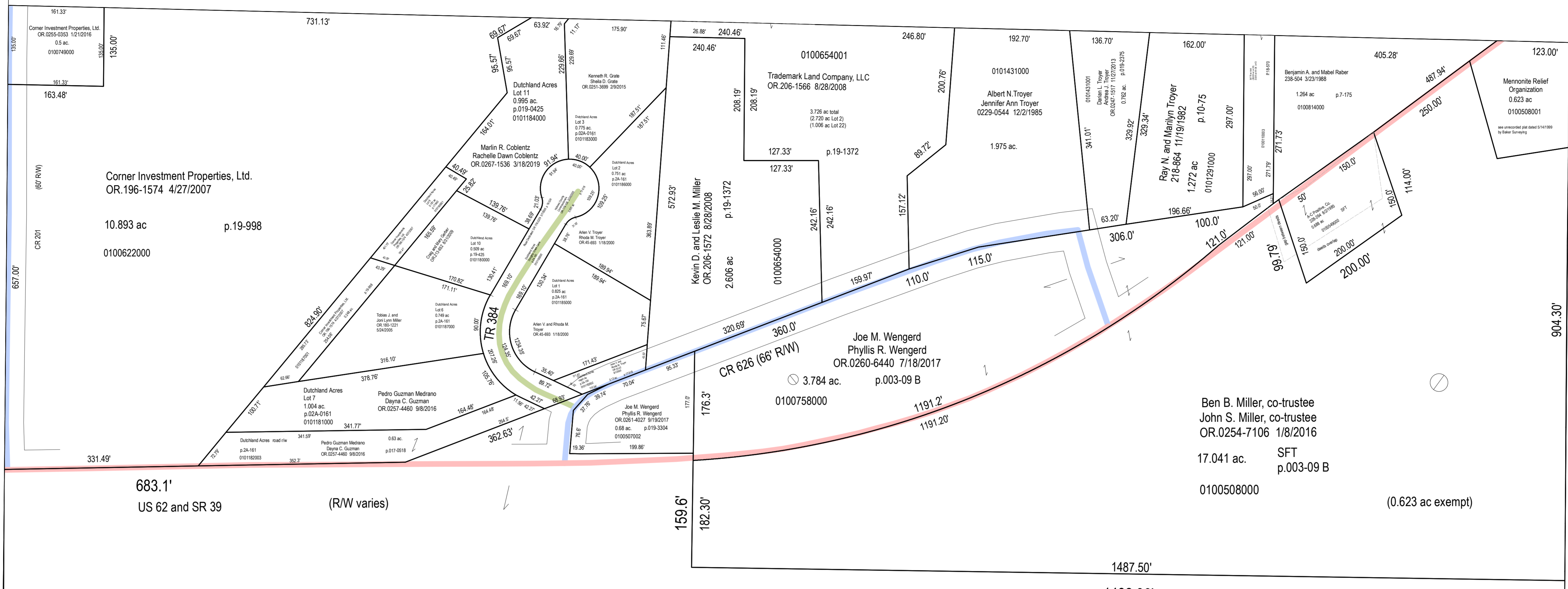


B-13A

B-13B



Corner Investment Properties, Ltd.
 OR.196-1574 4/27/2007
 10.893 ac p.19-998
 0100622000

0100654001
 Trademark Land Company, LLC
 OR.206-1566 8/28/2006
 3.738 ac total
 (2.720 ac Lot 2)
 (1.008 ac Lot 2)

Joe M. Wengard
 Phyllis R. Wengard
 OR.0260-6440 7/18/2017
 3.784 ac. p.003-09 B
 0100758000

Ben B. Miller, co-trustee
 John S. Miller, co-trustee
 OR.0254-7106 1/8/2016
 17.041 ac. SFT
 p.003-09 B
 0100508000

683.1'
 US 62 and SR 39 (R/W varies)

(0.623 ac exempt)

B-08

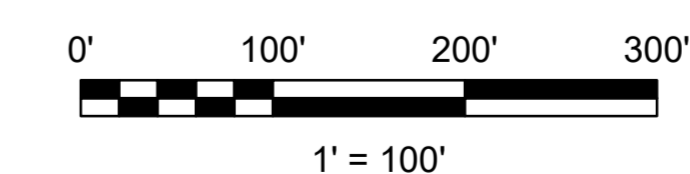
T9 R6 4th Qtr
Lot 2
 B-13D

B-13C

Ben B. Miller, co-trustee
 John S. Miller, co-trustee
 OR.0254-7106 1/8/2016
 OR.0254-7096 1/8/2016
 109.62 ac.
 0100507000

B-07

B-12



LET IT BE KNOWN, THIS MAP HAS BEEN PREPARED AS A REFERENCE GUIDE TO PROPERTY OWNERSHIP. WE BELIEVE THIS INFORMATION TO BE CORRECT AND CURRENT, HOWEVER IT IS NOT INTENDED FOR ANY LEGAL USE, WHETHER IT BE SALES, TRANSFERS, TRADES, LEASES OF ANY TYPE, ETC. AND DO NOT ACCEPT RESPONSIBILITY FOR ERRORS OF ANY NATURE OR OMISSIONS CONTAINED HEREIN.

S.F.T.
 new survey required for next transfer

Last Revision: 12/31/2019



Lot 2, 4th Qtr
T-9, R-6
Berlin Twp.
Holmes County, Ohio

B-13D