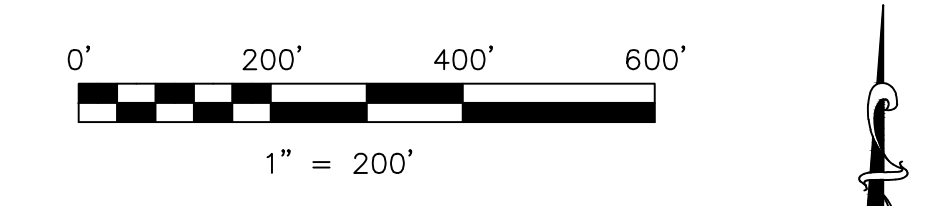


- ◆ Garden View Subdivision
Plat 2-417 Plotted 12/30/2005
Lots 1 thru 3 (also on map B-13B)
- ◆ Replot of Lots 1 and 3
Plat 2-517 Plotted 9/13/2012
Lots 4 and 5 (also on map B-13B)
- Coblenz Drive Subdivision
Plat 15-103 Plotted 8/20/1996
Lots 1 thru 5 (also on map B-13B)
- △ Broken Arrow Subdivision
Plat 18-733 Plotted 8/17/2003
Lot 1
- ◆ First Addition
Plat 19-1027 Plotted 5/21/2007
Lot 2 and private road
- ☆ Berlin View Subdivision
Plat 19-175 Plotted 9/8/2004
- ◆ Lighthouse Acres Subdivision
Plat 2-385 Plotted 8/25/2004

- 0100183000 ① Raymond and Edna Herschberger
140-479 6/5/1959
0.750 ac. p.3-55
- 0100555001 ② Perry W. and Mary Jane Chupp
OR.194-264 1/2/2007
1.060 ac. p.12-575
- 0100555000 ③ Perry W. and Mary Jane Chupp
217-134 5/25/1982
0.870 ac. p.7-521
- ④ not used
- ⑤ not used
- 0100692001 ⑥ Junior E. and Wanda Sue Miller
277-117 2/12/1997
1.225 ac. p.16-348
- 0100240000 ⑦ Perry W. and Mary Jane Chupp
OR.194-266 1/2/2007
1.000 ac. p.7-124
- 0101324006 ⑧ Perry W. and Mary Jane Chupp
278-95 5/5/1997
0.420 ac. p.16-414
- ⑨ not used
- ⑩ not used
- 0100338001 ⑪ Ben C. and Arlene Troyer
OR.19-713 11/4/1998
1.547 ac. p.16-910
- 0100613012 ⑫ Steven and Deborah R. Herschberger
OR.33-68 6/11/1999
1.65 ac. p.17-134

- 0100692000 ⑬ Leon D. and Mary Miller 3/4 int
Leah L. Miller 1/4 int
OR.154-268 6/5/2003
0.160 ac. SFT
- 0101324010 ⑭ Perry W. and Mary Jane Chupp
OR.191-1508 9/1/2006
0.438 ac. p.18-772
- 0100613013 ⑮ Steven and Deborah R. Herschberger
OR.170-2335 3/16/2004
0.215 ac. p.18-19
- ⑯ not used
- ⑰ not used
- ⑱ not used
- 0100915002 ⑲ U.R. Liberty, Ltd.
OR.184-618 10/20/2005
0.324 ac. p.19-526
- ⑳ not used
- 0100469000 ㉑ Weaver Playsets, Ltd.
OR.228-2538 9/27/2011
1.110 ac. p.7-546
- 0100930000 ㉒ Ston's Meats, Inc.
172-381 12/15/1969
1.000 ac.



LET IT BE KNOWN, THIS MAP HAS BEEN PREPARED AS A REFERENCE GUIDE TO PROPERTY OWNERSHIP. WE BELIEVE THIS INFORMATION TO BE CORRECT AND CURRENT, HOWEVER IT IS NOT INTENDED FOR ANY LEGAL USE, WHETHER IT BE IN SALES, TRANSFERS, TRADES, LEASES OF ANY TYPE, ETC., AND DO NOT ACCEPT RESPONSIBILITY FOR ERRORS OF ANY NATURE OR OMISSIONS CONTAINED HEREIN.

S.F.T. new survey required for next transfer

Last Revision: 9/25/2012

T-9, R-6, 1st Qtr.
Lots 11, 12, 16, 17
Berlin Twp.
Holmes County, Ohio

B-14