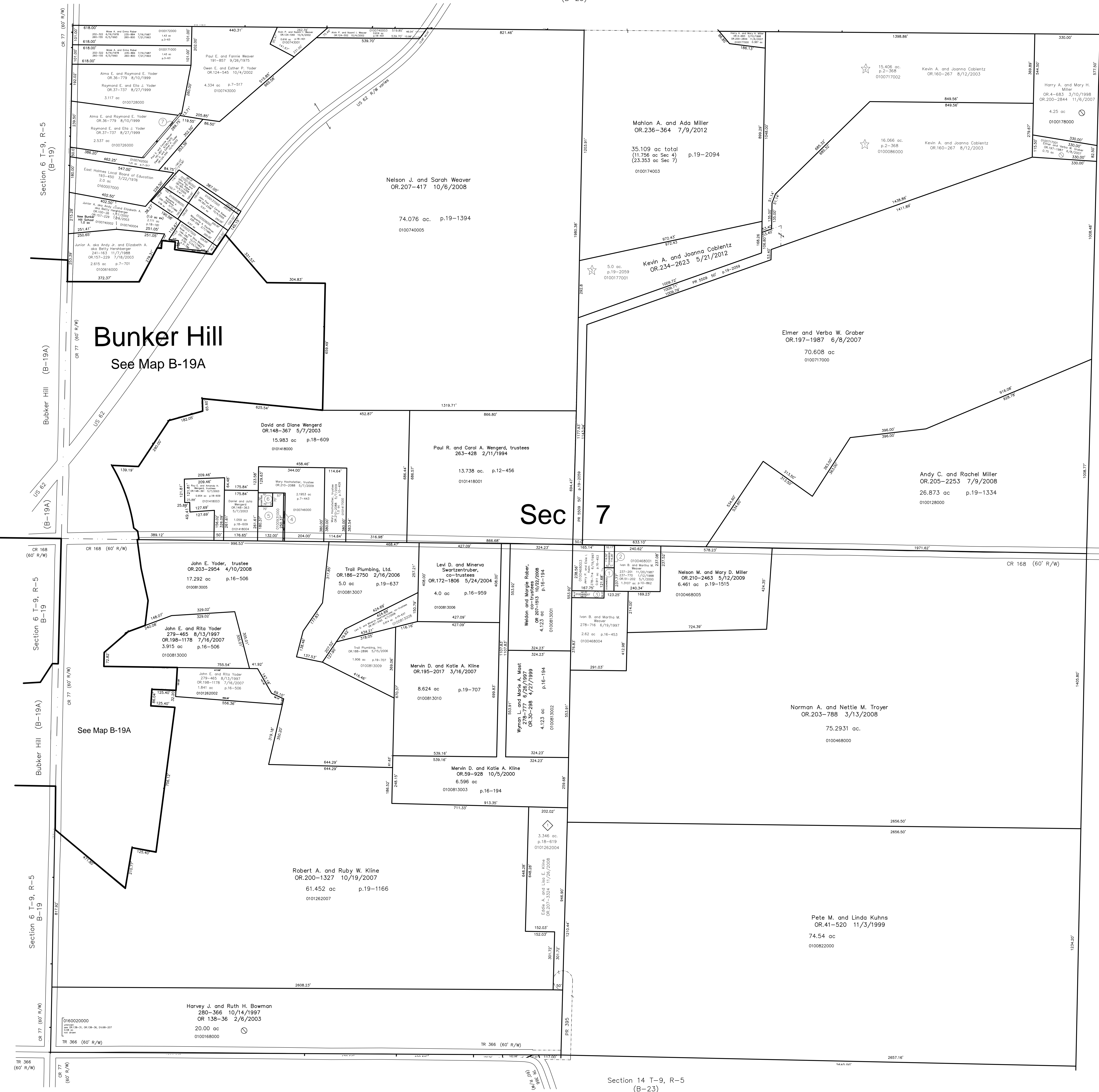


Section 4 T-9, R-5  
(B-25)



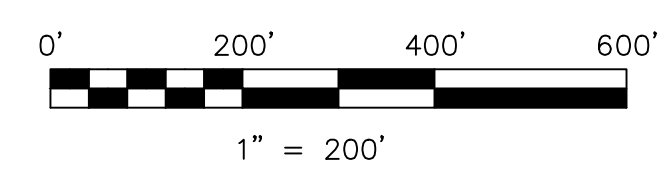
- 0100468002 ① Ivan B. and Martha Weaver  
266-817 11/28/1994  
0.1462 ac p.10-682
- 0100468006 ② Ivan B. and Martha M. Weaver  
OR.51-204 5/1/2000  
0.139 ac p.17-475
- 0100468007 ③ Jerry P. and Elaine L. Keim  
OR.51-206 5/1/2000  
0.139 ac p.17-475
- 0100660000 ④ Myron D. and Bronda F. Miller, co-trustees  
OR.236-1424 7/19/2012  
0.046 ac p.8-640
- 0100931000 ⑤ Myron D. and Bronda F. Miller, co-trustees  
OR.236-1424 7/19/2012  
0.6387 ac p.8-617
- 0100917000 ⑥ Myron D. and Bronda F. Miller, co-trustees  
OR.236-1424 7/19/2012  
0.12 ac p.8-196
- 0100726001 ⑦ Paul E. and Fannie Weaver  
Owen E. and Esther P. Yoder  
OR.169-327 12/24/2003  
0.056 ac p.18-852

Sec. 8, T-9, R-5  
Walnut Creek Township  
(WC-05)

Sec 7

Bunker Hill  
See Map B-19A

See Map B-19A



LET IT BE KNOWN THIS MAP HAS BEEN PREPARED AS A REFERENCE GUIDE TO PROPERTY OWNERSHIP. WE BELIEVE THIS INFORMATION TO BE CORRECT AND CURRENT, HOWEVER IT IS NOT INTENDED FOR ANY LEGAL USE, WHETHER IT BE IN SALES, TRANSFERS, TRADES, LEASES OF ANY TYPE, ETC., AND DO NOT ACCEPT RESPONSIBILITY FOR ERRORS OF ANY NATURE OR OMISSIONS CONTAINED HEREIN.

S.F.T. new survey required  
for next transfer

Last Revision: 7/19/2012

T-9, R-5, Sec. 7  
Berlin Twp.  
Holmes County, Ohio

- ◇ Beachy Hollow Subdivision  
Plat 18-619 Platted 5/15/2003
- ☆ KC Subdivision  
Plat 2-368 Platted 8/8/2003  
Lots 1 and 2
- ☆ KC Subdivision First Addition  
Plat 19-2059 Platted 4/24/2012  
Lot 3