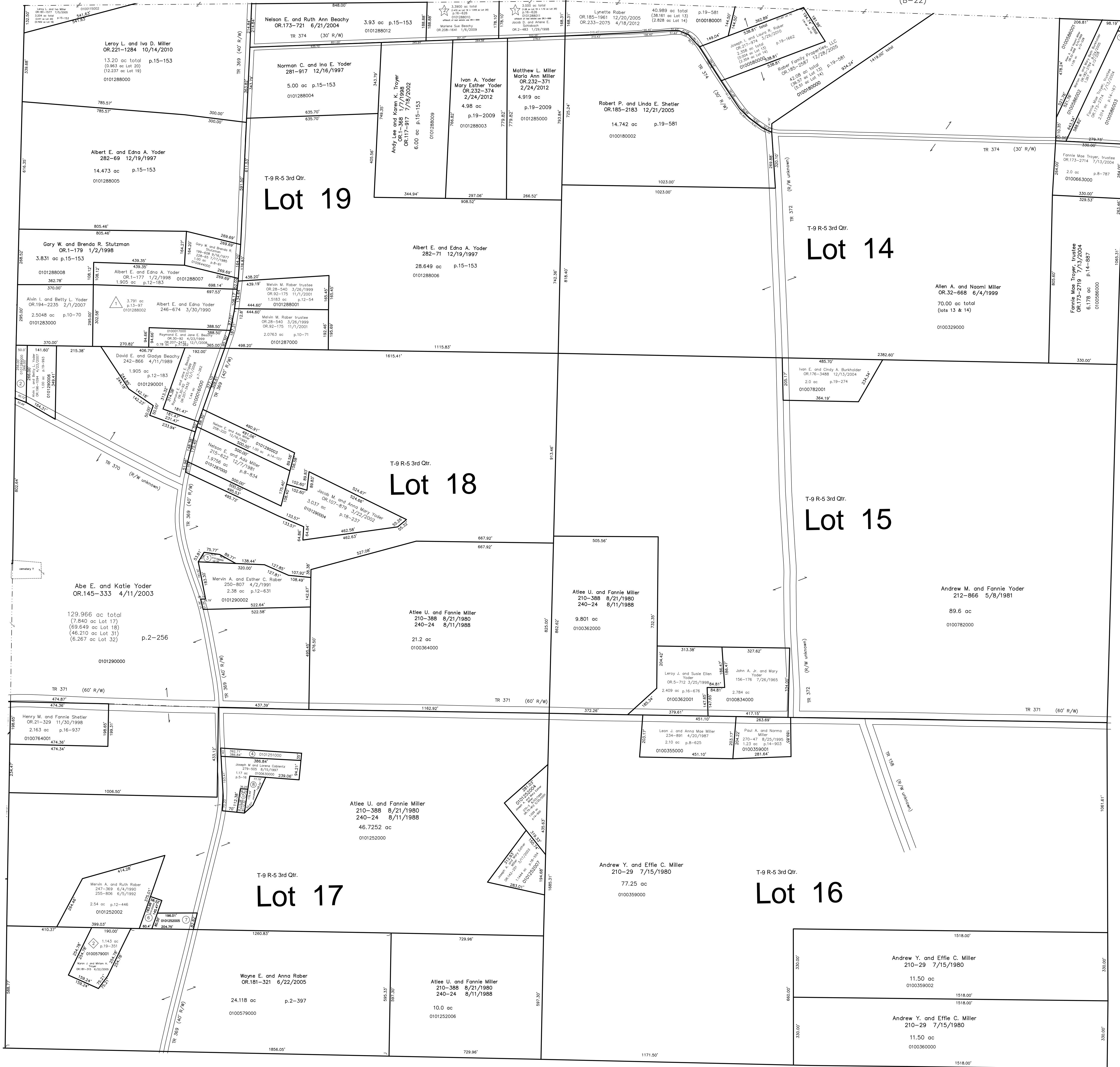


Lot 20, 3rd Qtr., T-9, R-5  
(B-22)

Lot 13, 3rd Qtr., T-9, R-5  
(B-22)



Sec 4 T-8, R-5  
(C-10)

- 0100586004 ① Willis R. Kline and Mary Miller  
OR 198-1736 4/30/2007  
0.041 ac p.17-642
- 0101289000 ② Alvin L. and Betty L. Yoder  
OR 194-2235 2/1/2007  
0.2983 ac p.10-70
- 0101290005 ③ Mervin A. and Esther C. Raber  
OR 145-331 4/11/2003  
0.127 ac p.2-256
- 0101251000 ④ Joseph M. and Lorene Coblentz  
279-505 8/15/1997  
0.3343 ac p.8-864
- 0101252001 ⑤ Joseph M. and Lorene Coblentz  
279-505 8/15/1997  
0.094 ac p.10-770
- 0101252003 ⑥ Mervin A. and Ruth Raber  
255-804 6/5/1992  
255-806 6/5/1992  
0.205 ac p.12-950
- 0101252005 ⑦ Mervin A. and Ruth Raber  
OR 2-3403 7/8/2008  
0.361 ac p.15-646
- 0101252008 ⑧ Joseph M. and Lorene Coblentz  
OR 211-3403 7/8/2008  
0.1971 ac p.19-1541

Lot 30 3rd Qtr., T-9, R-5  
B-16

Lot 31 3rd Qtr., T-9, R-5  
B-16

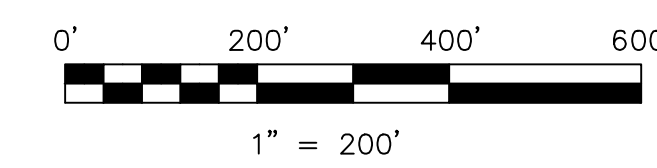
Lot 32 3rd Qtr., T-9, R-5  
B-16

Lot 3 3rd Qtr T-9 R-5  
Walnut Creek Township (WC-01)

Lot 2 3rd Qtr T-9 R-5  
Walnut Creek Township (WC-01)

Lot 1 3rd Qtr T-9 R-5  
Walnut Creek Township (WC-01)

- △ Frey Allotment No.1  
Plat 13-97 Platted 3/28/1990
- ☆ Frey Allotment No. 2  
Plat 16-626 Platted 1/8/1998  
affidavit for real estate use OR.1-999 1/21/1998
- ◇ M. & M. Troyer Subdivision Replat of Lot 1 & Additional Land  
Plat 19-351 Platted 3/30/2005



LET IT BE KNOWN, THIS MAP HAS BEEN PREPARED AS A REFERENCE  
GUIDE TO PROPERTY OWNERSHIP. WE BELIEVE THIS INFORMATION TO  
BE CORRECT AND CURRENT, HOWEVER IT IS NOT INTENDED FOR ANY  
LEGAL USE, WHETHER IT BE IN SALES, TRANSFERS, TRADES, LEASES  
OF ANY TYPE, ETC., AND DO NOT ACCEPT RESPONSIBILITY FOR  
ERRORS OF ANY NATURE OR OMISSIONS CONTAINED HEREIN.

S.F.T. new survey required  
for next transfer

Last Revision: 4/18/2012

**T-9, R-5, 3rd Qtr.  
Lots 14, 15, 16, 17, 18, 19  
Berlin Twp.  
Holmes County, Ohio**

**B-21**