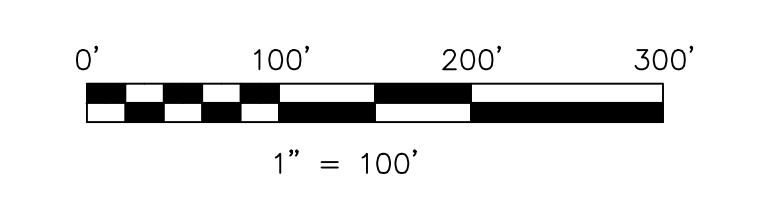


- 0100036011 ① Eli J. and Vesta Hochstetler  
OR.161-330 8/20/2003  
0.215 ac p.18-706
- 0100036004 ② Three Bee Company, Ltd.  
OR.214-582 10/15/2009  
0.125 ac p.12-634
- 0100036005 ③ Three Bee Company, Ltd.  
OR.214-582 10/15/2009  
0.125 ac p.12-866
- 0100036002 ④ Wayne W. Jr. and Martha Beachy  
OR.44-421 12/27/1999  
0.431 ac total p.17-343  
(0.271 ac Lot 25 + 0.016 ac Sec. 15)
- 0100035005 ⑤ Three Bee Company, Ltd.  
OR.214-582 10/15/2009  
0.277 ac p.17-465
- 0100217000 ⑥ Christian Aid Ministries  
OR.91-152 10/19/2001  
0.079 ac p.9-544
- 0100483001 ⑦ Holmes Limestone Co.  
233-609 12/11/1986  
0.1723 ac p.10-666
- 0100845001 ⑧ Phyllis Raymond and Colette Sylvia  
LeDor, trustees  
OR.222-2224 12/2/2010  
0.036 ac p.19-352
- 0100895003 ⑨ Droyz, Ltd.  
OR.212-2337 8/13/2009  
0.098 ac p.19-1566
- 0100895004 ⑩ Holmes County Flea Market, LLC  
OR.212-2740 8/13/2009  
0.065 ac p.19-1566
- 0100895005 ⑪ Holmes County Flea Market, LLC  
OR.212-2740 8/13/2009  
0.028 ac p.19-1566
- 0100939001 ⑫ Samuel E. Hershberger, trustee  
Mary K. Hershberger, trustee  
OR.227-2570 8/10/2011  
0.019 ac p.19-1676

★ Wayne J. Beachy Allotment No. 1  
Wayne J. Beachy Allotment No. 1  
Replat of Lot 1 and Additional Lands  
Plat 18-840 Platted 12/12/1993  
Lot 2

★ Wayne J. Beachy Allotment No. 1 First Addition  
Plat 19-380 Platted 4/28/2005  
Lot 3

▲ Beaver Hollow Subdivision  
Plat 19-1884 Platted 8/24/2011



LET IT BE KNOWN, THIS MAP HAS BEEN PREPARED AS A REFERENCE GUIDE TO PROPERTY OWNERSHIP. WE BELIEVE THIS INFORMATION TO BE CORRECT AND CURRENT, HOWEVER IT IS NOT INTENDED FOR ANY LEGAL USE, WHETHER IT BE IN SALES, TRANSFERS, TRUSTS, LEASES OF ANY TYPE, ETC., AND DO NOT ACCEPT RESPONSIBILITY FOR ERRORS OF ANY NATURE OR OMISSIONS CONTAINED HEREIN.

S.F.T. new survey required for next transfer

Last Revision: 6/14/2012

**T-9, R-5, 3rd Qtr.  
Lots 25 & 26  
Berlin Twp.  
Holmes County, Ohio**

**B-18C**