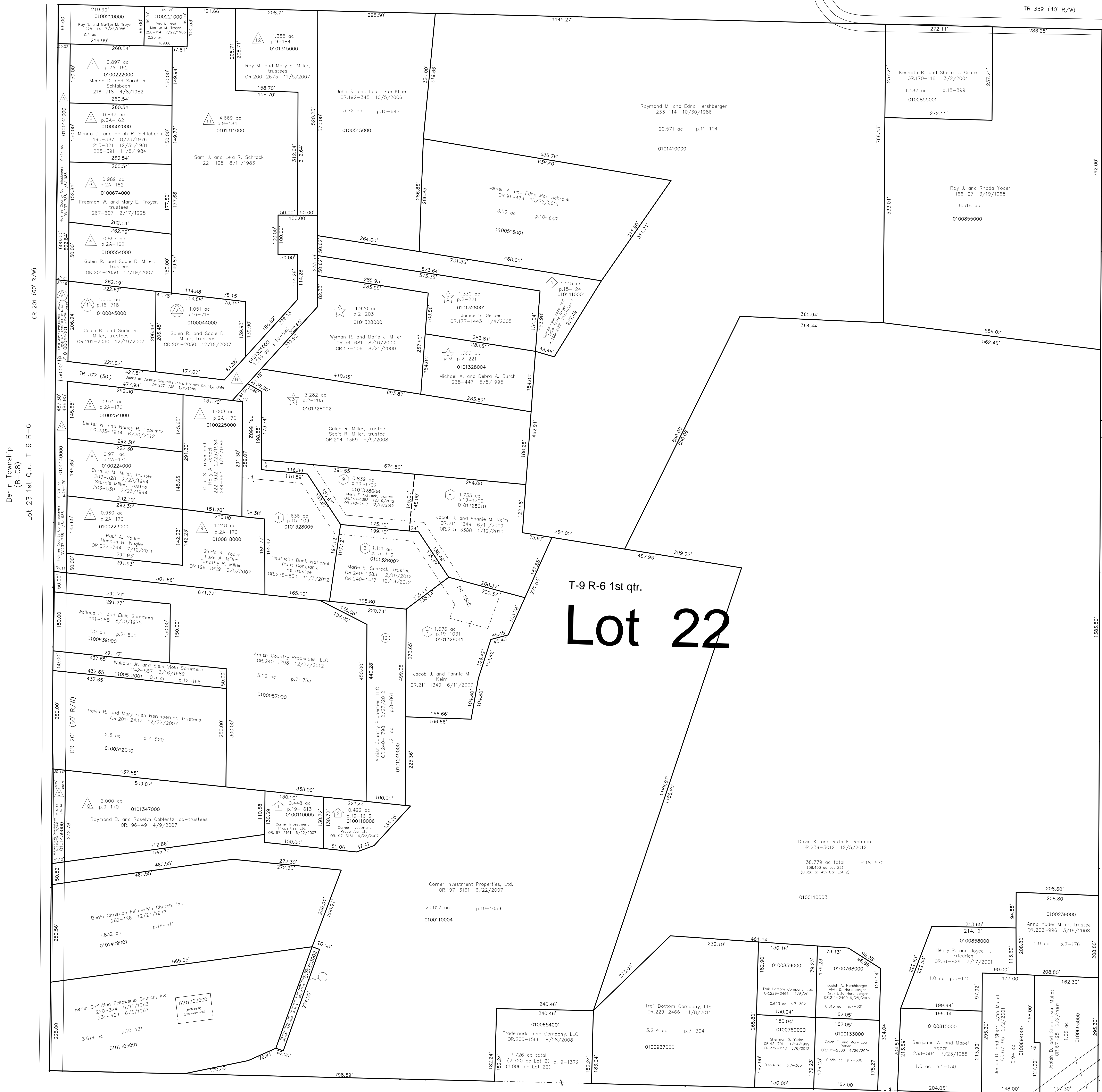


Berlin Township
(B-14)
Lot17 1st Qtr., T-9 R-6



- △ Nelson Miller
- Nelson Miller Allotment #1
Plat 2A-162 Platted 7/28/1976
Lots 1 thru 4
- Nelson Miller Allotment #2
Plat 2A-170 Platted 8/3/1979
Lots 5 thru 9
- Third Nelson Miller Subdivision
Plat 9-170 Platted 3/7/1983
Lot 10
- Fourth Nelson Miller Subdivision
Plat 9-184 Platted 7/5/1983
Lots 11 and 12
Also see Plat 10-154 for street dedication
- △ Nelson Miller Allotment No. 5
Plat 16-718 Platted 5/8/1998
Lots 1 and 2
- ☆ Marion Stutzman Subdivision
Marion Stutzman Subdivision
Plat 2-203 Platted 6/22/1987
Lots 1 thru 4
Out 4 re-platted as John E. Schrock Allotment #1 p.15-105)
- Replat of Lot 2
Plat 2-221 Platted 7/30/1990
Lots 5 and 6
- Lot 4 re-platted 10/21/1996
see Plat 12-109
(John E. Schrock Allotment #1)
- John E. Schrock Allotment
John E. Schrock Allotment #1
Plat 15-109 Platted 10/21/1996
Lots 1 thru 5
- John E. Schrock Allotment #1
Replat of Lots 4 and 5 and Additional Land
Plat 19-1031 Platted 5/25/2007
Lots 6 and 7
- John E. Schrock Allotment #1
Replat of Lot 2 and Lot 6
Plat 19-1702 Platted 5/24/2010
Lots 8 and 9
- ◇ Raymond M. and Edna Hershberger Allotment No. 1
Plat 15-124 Platted 4/11/1997
- ⬢ Corner Subdivision
Plat 19-1613 Platted 12/16/2009

T-9 R-6 1st qtr.
Lot 22

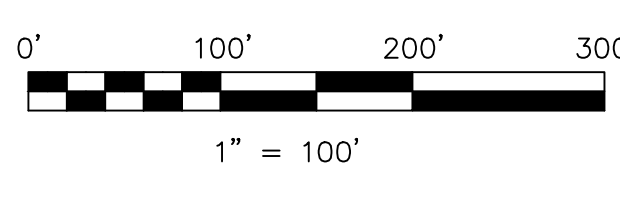
Berlin Township
(B-08)
Lot 23 1st Qtr., T-9 R-6

Berlin Township
(B-13B)
Lot 21 1st Qtr., T-9 R-6

Lot 2 4th Qtr., T-9 R-6
Berlin Township
(B-13D)

Last Revision: 12/27/2012

**T-9, R-6,
1st Qtr., Lot 22
Berlin Twp.
Holmes County, Ohio**



LET IT BE KNOWN, THIS MAP HAS BEEN PREPARED AS A REFERENCE GUIDE TO PROPERTY OWNERSHIP. WE BELIEVE THIS INFORMATION TO BE CORRECT AND CURRENT, HOWEVER IT IS NOT INTENDED FOR ANY LEGAL USE, WHETHER IT BE IN SALES, TRANSFERS, TRUSTS, LEASES OF ANY TYPE, ETC., AND DO NOT ACCEPT RESPONSIBILITY FOR ERRORS OF ANY NATURE OR OMISSIONS CONTAINED HEREIN.

S.F.T. new survey required
for next transfer

B-13A

0101303002 (1) Hennahs House, Ltd.
282-131 12/24/1997
0.124 ac p.16-611

Corner Investment Properties, Ltd.
OR.197-3161 6/22/2007
20.817 ac p.19-1059
0100110004

David K. and Ruth E. Rabahn
OR.239-3012 12/5/2012
38,779 ac total p.18-570
(18,443 ac Lot 22)
(0.26 ac 4th Qtr. Lot 2)

SR39 & US63
(R/W varies)