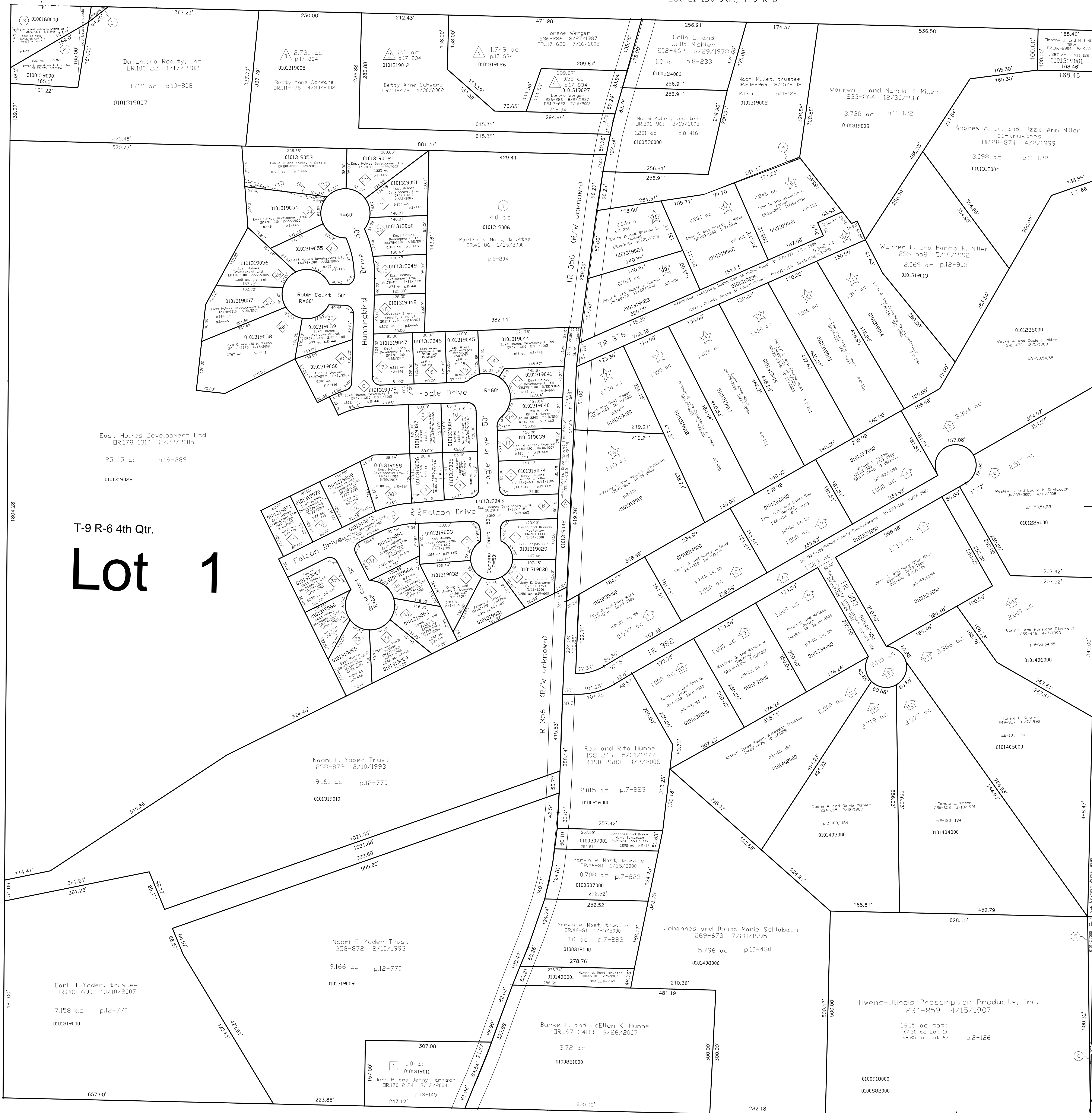


Berlin Township
(B-13B)

Lot 21 1st Qtr., T-9 R-6

Fractional Sec
15
T-9 R-5



T-9 R-6 4th Qtr.
Lot 1

- Deer Path Estates
Plat 17-834 Platted 3/28/2001
- Warren Miller Allotment No. 1
Plat 2-204 Platted 12/30/1987
- MCC Allotment No. 1
Plat 13-145 Platted 12/27-1991
- The Meadows Allotment No. 1
Plat 2-251 Platted 8/24/1995
- Golden Valley Estates Subdivision
Golden Valley Estates Subdivision, First Add.
Plat 9-53, 54, 55 Platted 12/21/1979
Lots 1 thru 10
Golden Valley Estates Subdivision, Second Addition
Plat 2-183, 184 Platted 11/30/1984
Lots 11 thru 15
- Hawk's Landing
Hawk's Landing Phase 1
Plat 19-662 Platted 4/4/2006
Covenants & Restrictions DR187-2804
Lots 1 thru 13
Hawk's Landing Phase 2
Plat 2-446 Platted 5/11/2007
Covenants & Restrictions DR196-3100
Lots 14 thru 41

Lot 40 3rd Qtr.
T-9 R-5

Berlin Township
(B-18)

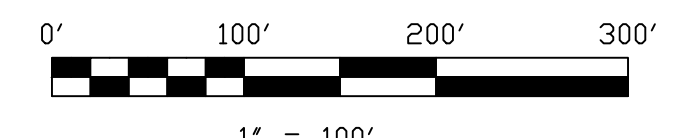
Lot 29 2nd Qtr.
T-9 R-5

Lot 6 4th Qtr., T-9 R-6

Berlin Township
(B-12)

Last Revision: 11/24/2008

**T-9, R-6,
4th Qtr., Lot 1
Berlin Twp.
Holmes County, Ohio**



LET IT BE KNOWN, THIS MAP HAS BEEN PREPARED AS A REFERENCE GUIDE TO PROPERTY OWNERSHIP. WE BELIEVE THIS INFORMATION TO BE CORRECT AND CURRENT. HOWEVER IT IS NOT INTENDED FOR ANY LEGAL USE, WHETHER IT BE IN SALES, TRANSFERS, TRADES, LEASES OF ANY TYPE, ETC., AND DO NOT ACCEPT RESPONSIBILITY FOR ERRORS OF ANY NATURE OR OMISSIONS CONTAINED HEREIN.

S.F.T. new survey required for next transfer

B-13C

- 0100158000 ① Dutchland Realty, Inc.
DR100-22 1/17/2002
0.019 ac p.12-507
- 0100159000 ② Bryan D. and Gloria R. Stoltzfus
DR187-275 3/1/2006
0.307 ac p.5-153
- 0100160000 ③ Bryan D. and Gloria R. Stoltzfus
DR187-275 3/1/2006
0.405 ac p.4-53
- 0101319008 ④ Naomi Mullet, trustee
DR206-969 8/15/2008
0.01 ac p.15-303
- 0101457000 ⑤ Albert B. and Rebecca A. Hensberger
DR206-918 1/24/1997
0.067 ac p.16-336
- 0100591001 ⑥ Owens-Illinois Prescription
Products, Inc.
DR35-486 7/18/2000
0.021 ac total p.17-565
0.012 ac Lot 1 4th Qtr.
(0.009 ac Lot 39 3rd Qtr.)
- 0101319075 ⑦ SW part Lot 23 Hawk's Landing Subdivision Phase 2
East Holmes Development, Ltd.
DR207-3255 11/24/2008
0.020 ac p.19-1416
- 0101319074 ⑧ NE part Lot 24 Hawk's Landing Subdivision Phase 2
Loree B. and Shirley M. Oswat
DR207-3262 11/24/2008
0.020 ac p.19-1416