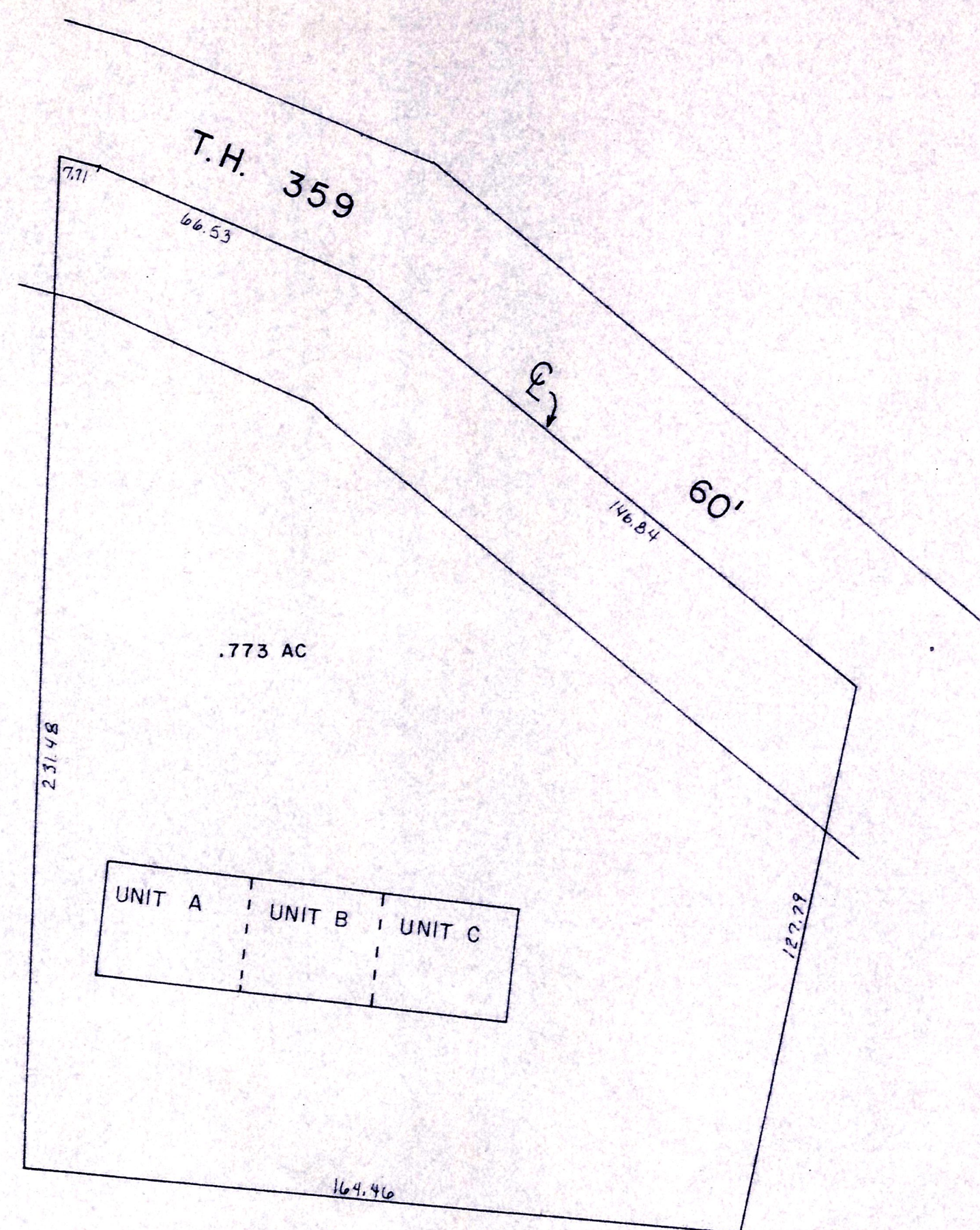


| BERLIN HILLS CONDOMINIUM |                                    |          |         |
|--------------------------|------------------------------------|----------|---------|
| UNIT                     | OWNER                              | DEED     | DATE    |
| A                        | Musiel Associates, LTD.            | 08-2-188 | 4/1/89  |
| B                        | Musiel Associates, LTD.            | 08-2-188 | 2/12/89 |
| C                        | Musiel Associates, LTD.            | 08-2-188 | 4/1/89  |
| COMMON AREA              | EACH UNIT OWNS UNDIVIDED ONE-THIRD | 242-615  | 3/20/89 |



### BERLIN HILLS CONDOMINIUM

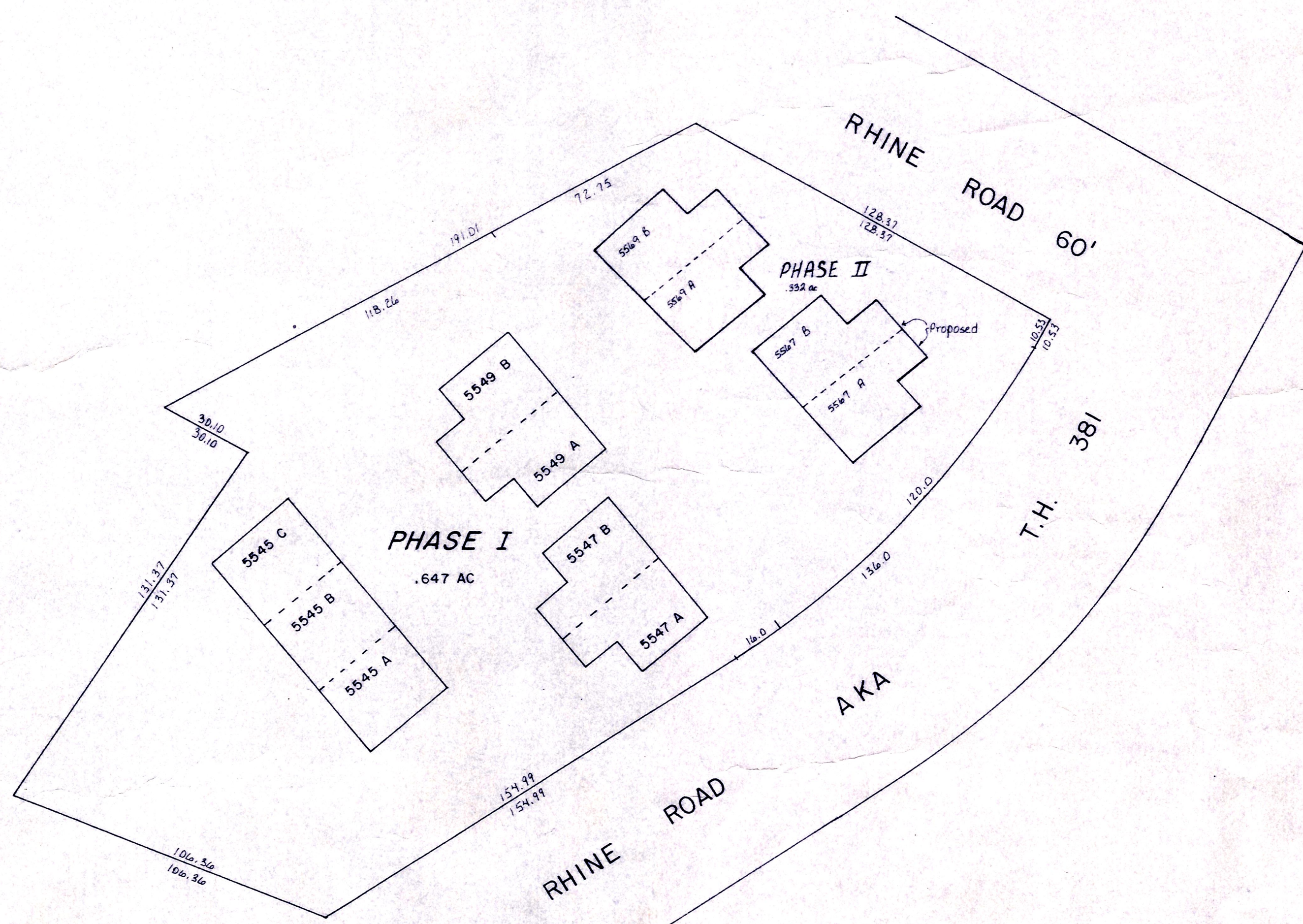
Lot 21, 1st Qtr., T-9, R-6 (See Map B-13B)

Scale 1" = 30'

Declaration: Vol. 242, Pg. 615 3-20-1989

Plat Vol. 13, Pg. 59-60

| LAUREL RUN CONDOMINIUM PHASE I & II |   |                    |                     |
|-------------------------------------|---|--------------------|---------------------|
| UNIT                                | OWNER   | DEED               | DATE                |
| 5545 A                              | Roman L. Jr. & Naomi J. & Marc A. Kandel  | 272-922            | 6/12/89             |
| 5545 B                              | Rachel Kaufmann   | 245-447            | 6/22/89             |
| 5545 C                              | Henry R. Voder  | 272-149            | 11/14/89            |
| 5547 A                              | Kevin Mast  | 275-183            | 6/12/89             |
| 5547 B                              | James D. Voder  | 268-102            | 11/12/89            |
| 5549 A                              | Richard E. & Doris M. Fath  | 268-102            | 6/22/89             |
| 5549 B                              | Sonnie Miller   | 245-550            | 11/12/89            |
| COMMON AREA                         | EACH UNIT OWNS UNDIVIDED ONE-ELEVENTH   | 248-446<br>243-778 | 6/12/89<br>6/14/89  |
| 5567 A                              | Roman L. Jr. & Naomi T. Kandel  | 275-644            | 6/12/89             |
| 5567 B                              | Wesley & Betty D. Miller  | 273-724            | 6/12/89             |
| 5569 A                              | Daniel R. & Barbara M. & Melissa S. Gingrich<br>Joseph D. Musiel & Sherri L. Mast | 285-312<br>277-262 | 7/25/89<br>12/25/89 |
| 5569 B                              | Ernst Schwack, Jr.  | 246-242            | 6/12/89             |



### LAUREL RUN CONDOMINIUM

Lot 11B, Second Stutzman S.D. located in  
Lot 21, 1st Qtr., T-9, R-6 (See Map B-13B)

Scale 1" = 30'

Declaration: Vol. 243, Pg. 778 6-14-1989

Plat Vol. 2, Pg. 211-215

CONDOMINIUMS

LET IT BE KNOWN, THIS MAP HAS BEEN PREPARED AS A REFERENCE GUIDE TO PROPERTY OWNERSHIP. WE BELIEVE THIS INFORMATION TO BE CORRECT AND CURRENT, HOWEVER, IT IS NOT INTENDED FOR ANY LEGAL USE, WHETHER IT BE IN SALES, TRANSFERS, TRADES, LEASES OF ANY TYPE, ETC. AND DO NOT ACCEPT RESPONSIBILITY FOR ERRORS OF ANY NATURE OR OMISSIONS CONTAINED HEREIN.

B-13C