



THOMAS E. FERGUSON
AUDITOR OF STATE
COLUMBUS, OHIO 43216

DEPUTY AUDITORS:

JAMES A. BOLDEN
Administration

RICHARD G. NUSS
CPA
Auditing Division

RUSSELL ROUCH
Management Advising
Service

CERTIFICATION

I, Thomas Aquinas Burke, Supervisor, Land Office of the Auditor of State, duly authorized to perform the duties of the Auditor of State prescribed in Section 115.21 of the Ohio Revised Code, hereby certifies that the enclosed field notes and plats are true copies taken from records in our office. These plats and field notes are for the following townships in the United States Military District:

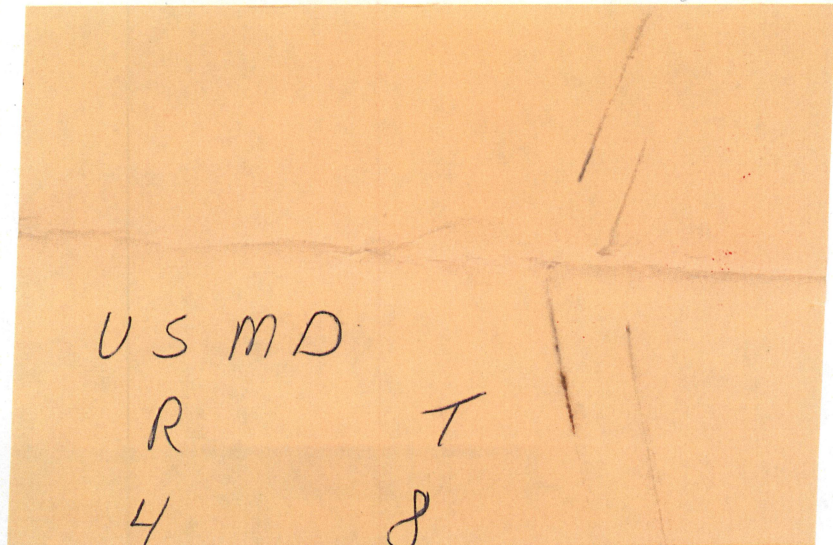
1. Range 4, Townships 8, 9 and 10
2. Range 5, Townships 8, 9, and 10
3. Range 6, Townships 8, 9, and 10
4. Range 7, Townships 8, 9, and 10
5. Range 8, Townships 8 and 9
6. Range 9, Townships 8 and 9

and in the Ohio River Survey

1. Range 11, Townships 14 and 15
2. Range 12, Townships 14 and 15
3. Range 13, Townships 13 and 14
4. Range 14, Townships 17 and 18
5. Range 15, Townships 19 and 20

Witness my hand and seal of the Office of the Auditor of State, at Columbus, Ohio, this Twentieth-Nine day of November in the year of Our Lord Nineteen Hundred and Eighty-Three (1983).

Thomas Aquinas Burke
Supervisor
State Land Office



West boundary of Township No. 8 Range No. 3, Cont.

North

15.. — a small brook running west

21.. 10 a white oak 10" diam^t - good upland timber principally white oak

44.. — Bottom Land begins

49.. 10 a maple 13" diam^t

49.. 50 a brook 10 links wide running west

57.. 04 a white oak 2 feet diam^t - through the bottom timber
white oak Hickory & hickory & cherry tree undergrowth hazle

69.. 07 a white oak 10" diam^t - Bottom Land west of the line

76.. 75 a ~~oak~~ 2 1/2 feet diam^t

04.. 06 a ~~oak~~ 16" ~~oak~~ - good land timber principally
white oak - brush hazle

93.. 91 a ~~oak~~ 2 feet diam^t

200.. — Set Post corner to Towns 8 Ranges 3 & 4 - south side
of a small brook - running west - a Hickory 7" diam^t
May 27th 1798

North boundary of Township No. 8 Range No. 3 -

beginning at a post Northwest corner of Town 8 and Southwest
of 99 Range 3 and corner to Towns 8 & 9 Range 4
from which a white oak 2 feet diam^t - bears N 72 W 9 links
& a sugar tree 1 foot diam^t - bears N 80 E 69 links Marked
per plan - June 5th 1798

East - June 6th 1798 - Run East -

00.. 06 to a brook 12 links wide running N 70 W

13.. 93 Red oak 10" diam^t

17.. — cross last noted brook from N E running S W

10.. 30 a white oak 2 feet diam^t

36.. 10 Hickory 10" diam^t

50.

West boundary of Township N^o 3 Range N^o 3 - 60.

North

- 193. - a small brook running west
- 194. 50 through bottom which is Rich timber, Black ash Maple El
- 195. 69 a forked white Oak 2 1/2 feet diam^r.
- 200. - Set Post corner to sections N^o 2 & 3. Town & Range N^o 3 and 1 & 4 Town & Range 4 - a white Oak 14" diam^r - bears S 57 W 67 links - another white Oak 14" diam^r - bears N 27 E 41 Links Marked for plan - Land of good soil for raising wheat etc. timber - Black

2 1/2 Miles North

- e 2
- 11. 70 a white Oak 14" diam^r
- 20. - a D^o 14" D^o good Land
- 34. 01 a D^o 24" D^o Land Rich timber white Oak Black Oak, Walnut & the line running on west side of a Riv^r.
- 46. 07 a white Oak 2 feet diam^r
- 55. 79 a D^o 26" diam^r
- 61. 90 a red Oak 26" D^o Land Rich timber Black Walnut, W Oak Black Oak Hickory & under of the pine
- 72. 67 a white Oak 16" diam^r - enters bottom Land
- 75. - a brook 15 links wide running
- 80. 95 a maple 16" diam^r - timber ^Bash, Elm & white Oak
- 86. - through the bottom
- 89. - a white Oak 14" diam^r
- 90. - small Brook running west bottom Land & appears to be wide
- 107. 12 a white Oak 16" diam^r - upland East of the line & bottom continues west of the line

West boundary of Township N^o. 8 Range N^o. 3

From Southwest corner of Town 8 Range 3 - a Hickory 7

- North diam^t bears S 60° E 40 links and a Black oak same size
- 21th Lth bears N 71° W 52 links - Marked per plan - Run North
- 1st 34 a poplar 3 feet diam^t
- 21st 02 a Black Oak 14th diam^t Land stony & poor -
- 37th 37 a white Oak 14th diam^t G^o G^o
- 55th 22 a G^o 12th G^o The Land begins to be of good quality
the line has run on North point and side of a bridge
which has borne with the course from the corner -
- 62nd 50 Bottom Land begins having descended North point fast to
- 69th 75 a Brook running west 15 links wide
- 75th - through the bottom which is Rich timber Sugar tree Elm
Green Ash &c undergrowth Hazel
- 84th 03 a Maple 11th diam^t good Land
- 90th 31 a white Oak 2 feet diam^t
- 95th - Raising a hill obliquely to the top for 20th hill not steep so (= good)
- 97th 50 a Chestnut 2 feet diam^t
- 99th 69 a G^o 3¹/₂ feet G^o
- 108th - a white Oak 18th diam^t The Land continues of good quality
- 130th - Enter Bottom Land
- 177th 20 a Maple 15th diam^t
- 180th 20 a Brook 10 links wide running west
- 194th - through the bottom which is Rich timber ash Maple &c
- 198th 72 a Black Oak 16th diam^t
- 260th 00 a white Oak 1 foot diam^t Bottom Land west of the line
- 380th 50 a chestnut Oak 15th diam^t Land good notwithstanding
- 490th - Bottom Land begins

North boundary of Township No. 7 Range No. 4 -

- Beginning at the Southeast Corner of Town 8 Range 4 -
- West 4 - Run West -
- 4⁰⁰ 05 a Chestnut 3 feet diam^t -
 - 19⁰⁰ 70 a Red Oak 2 feet ^{diam} -
 - 30⁰⁰ 69 a Chestnut 2 1/2 feet ^{diam} - ^{Land stony & brushy}
soil middling good
 - 44⁰⁰ 35 a small brook running SW
 - 50⁰⁰ 50 a small brook running south
 - 52⁰⁰ 54 a Black Oak 16" diam^t -
 - 64⁰⁰ 79 a White Oak 15" ^{diam} - ^{good Land last 33 chains}
 - 74⁰⁰ - a Brook 15 links wide running NW
 - 79⁰⁰ - a Brook 15 links wide running N 15° E
 - 81⁰⁰ - cross the brook last noted
 - 100⁰⁰ - through bottom covered with plumbe Hazel alder & Thorn (= bushes)
 - 104⁰⁰ 77 a White Oak 16" diam^t -
 - 110⁰⁰ - Good Land timber principally White Oak
 - 121⁰⁰ 50 to top of a hill high & steep Land poor
 - 128⁰⁰ - foot of the hill Land still poor
 - 135⁰⁰ - a White Oak 12" diam^t -
 - 143⁰⁰ 50 a small brook running south
 - 147⁰⁰ 79 a White Oak 13" diam^t -
 - 150⁰⁰ - a high nob. bear North 11° 50' ^{c. l.}
 - 159⁰⁰ 00 a White Oak 14" diam^t - middling good white Oak Land
 - 164⁰⁰ 75 a small brook running S 67° E
 - 168⁰⁰ 50 a small Deer Sub bear North 11° 50' ^{c. l.}
 - 192⁰⁰ 45 a White Oak 12" diam^t - Land thinly timbered very
brushy soil good as is supposed for wheat -
 - 200⁰⁰ - Set Post Corner to Sections No. 384 70 ^{and 182 T}
Range 4 - from which

South boundary of Township No 7 Range No 4 Co. 10
West

from which a white Oak 15" diam - bears N52°15' E
83 links another white Oak 12" diam bears N40°25' 06"
Marked per glass

2 1/2 Miles West

- 20" - through a thicket of white & black Oak brush
- 25" 25 a small brook running North
- 30" 50 rising a hill for last 5 chains a Chestnut 18" diam - hills short & rocky the whole way
- 37" 76 a white Oak 15" diam
- 47" 56 to a brook 8 links wide running N E
- 59" 46 a white Oak 15" diam - Land for last 10 chains level of good timber white & black Oak & brush alder Hazel &c
- 92" 50 through a thicket of white & black Oak brush no timber soil thin for last 27 chains
- 95" 69 a maple 12" diam
- 96" 50 small brook running North midling good Land
- 109" 20 a white Oak 15" diam - Land thirty timbered &
- 117" 32 a D^o 3 feet D^o
- 132" 22 a Black Oak 2 feet D^o - Land on the line midling
- 142" - a white Oak 2 1/2 feet D^o
- 154" 21 a D^o 1 foot D^o
- 162" - a small brook 10 links wide running North
- 167" 94 an ash tree 12" diam
- 178" - Bottom Land south & upland North of the line
- 189" 90 a white Oak 14" diam - good level land
- 199" 63 Intersected west boundary of Range 4. S. 11
North of the corner
- 200" - Set Post May 28th 1798

West boundary of Township N. 7. & Range N. 4

- Beginning at a Post ^{1/2} 10 south of the point of Intersection
 North of Towns & Range 4 — Run North —
- 11. 62 a white Oak 2 feet diam²
 - 15. — a small brook running East Bottoms 5 Chains wide
 - 18. 63 a white Oak 12" diam²
 - 37. 11 a ²/₂ 12 ²/₂ good Land from the Corner of open
 woods timber principally white Oak —
 - 50. 41 a Red Oak 15" diam²
 - 64. — a small brook running East
 - 67. 73 a white Oak 16" diam²
 - 74. — through the bottoms from East brook
 - 81. 99 a white Oak 14" diam²
 - 89. — a white Oak 16" ²/₂
 - 106. 67 a ²/₂ 18" ²/₂ good Land & sufficiently level
 from the corner — Surveyed 28th May 1798 —
 - 115. — a white Oak 12" diam²
 - 117. 50 a brook 10 links wide running East —
 - 124. — a brook 15 links wide running S 10 E
 - 133. 50 Low Bottoms for last 19 chains timber Black ash
 Elm & brush alder & affinis —
 - 144. 50 a Black Oak 14" diam²
 - 149. 26 a white Oak 15" ²/₂
 - 156. 90 a Black Oak 2 1/2 feet ²/₂
 - 160. 75 a white Oak 3. feet ²/₂
 - 195. 50 a small brook running S 20 E
 - 200. — Set Post corner to Sections N^o 1 & 4 Town & Range
 5 and 2 & 3 Town & Range 4 — a white Oak
 5" diam² — bears N 54 E 20 links and a white Oak 2 1/2
 feet diam² — bears S 83 1/2 W 49 links a spring bearing
 S 30 E 20 links Land good from the corner of the Town

West boundary of Township No. 0 Range No. 4 - Cont.

North	2 1/2 Miles North
10.. 04	a Gum 10" diam
10.. 10	a small brook running East
22.. -	a white Oak 15" diam
53.. 73	a Chesnut 3 feet diam
63.. 31	a Hickory 12" diam - Descending hill
68.. 47	a white Oak 15" diam - near foot of hill which is of gentle descent
70.. -	a small brook running East
77.. -	a white Oak 17" diam
90.. 10	a Brook 15 links running East the bottom 6 chains wide timber Hickory, Elm, & Black Ash
91.. 33	a white Oak 12" diam
95.. 10	a small brook running S 40° E
103.. 64	a white Oak 16" diam
114.. 03	a 2° 20' 20' leave the bottom of last noted brook 2.50 th side the brook having borne with the course
130.. 09	a Red Oak 10" diam - last noted brook 30 links west
151.. 23	a Black Oak 15" diam
153.. 50	Rising high steep hill for last 9.50 th Land breaking soil of middling quality & begins to descend
163.. -	a small brook running N E at foot of hill
171.. 31	a Black Oak 12" diam - on East point of a hill
180.. 50	a Deer lick in the line
188.. 76	a Forked tree 3 feet diam
200.. -	May 29 th 1798

North boundary of Township 7th & Range 4th

Beginning at a Post set at the Northwest corner of
 Town 8 and Southwest of Town 9 Range 4 - from
 which an Aspin 5th diam^t - bears S 9th W 10 links and an
 other aspin 4th diam^t - bears N 5th E 12 links marked per plan
 East - (no large timber) 1.11th North of the other corner 8 & 9 R 5th
 11.00 a Chestnut 16th diam^t - Land good & level enough for till
 17. - a small brook running North -
 24.40 a small brook Sth - Sth
 26.77 a White Oak 10th diam^t -
 34.50 Rising a hill for last 10 chains Land good & not steep
 40.17 a White Oak 3 feet Diam^t -
 44.20 a small brook running N 20th E
 49.10 a small brook Sth N 40th E
 53.40 a White Oak 15th diam^t -
 75.66 a Sth 12 Sth
 84.79 a Chestnut 3 feet Diam^t -
 96. - a Sth 3 Sth Sth
 103.09 a White Oak 13th diam^t - Land still good
 115.50 a Sth 14 Sth
 124.61 a Black Oak 3 feet Sth
 133.30 a White Oak 13th diam^t -
 133.40 a Black Oak 16th Sth
 139.44 a Chestnut 4 feet Sth
 153.27 a Black Oak 3 feet Sth
 161.74 a Sth 2 feet Sth - good Land for last 80
 chains the line running on ridge timber
 White Oak Black Oak Chestnut &c
 168.50 a small brook running N 20th E
 169.50 a White Oak 22th diam^t -
 180.71 a Chestnut 15th diam^t - Rising a ridge to top from
 last small brook

North boundary of Township No. 8 Range No. 4 - Cont

East

- 192..03 a white Oak 16" diam
- 199..50 a small brook running North 15° E
- 200.. - Set post corner to sections No. 182 Town 0 and 344 Town 9 Range 4 - a white Oak 3 feet diam - bears N 5° W 39 links of a Maple 10" diam - bears S 75° E 31 links marked per plan

2 1/2 Miles East

- 3..70 a white Oak 12" diam
- 10..04 a D. 14" D.
- 12.. - ascend a hill obliquely from the corner
- 29..92 a white Oak 17" diam
- 30..50 a D. 14" D.
- 50..02 a Black Oak 17" D.
- 57..05 a Maple 4" D.
- 59..05 a white Oak 12" D. good Land
- 77..00 " D. 16" D.
- 83.. - a D. 14" D. The Land from the corner uniformly good timber w/ Black Oak Maple
- 100.. - foot of hill & enter bottom
- 109..77 a white Oak 18" diam - here the bottom is wet cover with thorn, aspen, pine, burk, crab tree & rose haw
- 120..75 Rapid brook 12" deep 15 links wide running S. E.
- 122..72 a Chestnut 12" diam
- 136..05 a Hickory 8" diam
- 144..30 to bank of Sugar Creek 60 links wide running little North of East with current
- 150..25 to the Creek turns S. E.
- 153.. - to bank of the Creek running North
- 161..19 a white Oak 16" diam upland from the Creek

North boundary of Township No. 0 Range No. 4.

East.

166.41 a white Oak 13" diam - standing 15 links west of spur trail bearing nearly North & South -

174.50 a white Oak 2 1/2 feet diam Sand Level

179.50 another branch of sugar Creek 30 links wide

181.10 a Cherry tree 14" diam - good bottom Land

185.00 a Maple 12" diam -

195.40 a Hickory 10" diam

201.25 Intersected East boundary of Town 0 Range 4

Set Post 1.40 South of corner - a white Oak

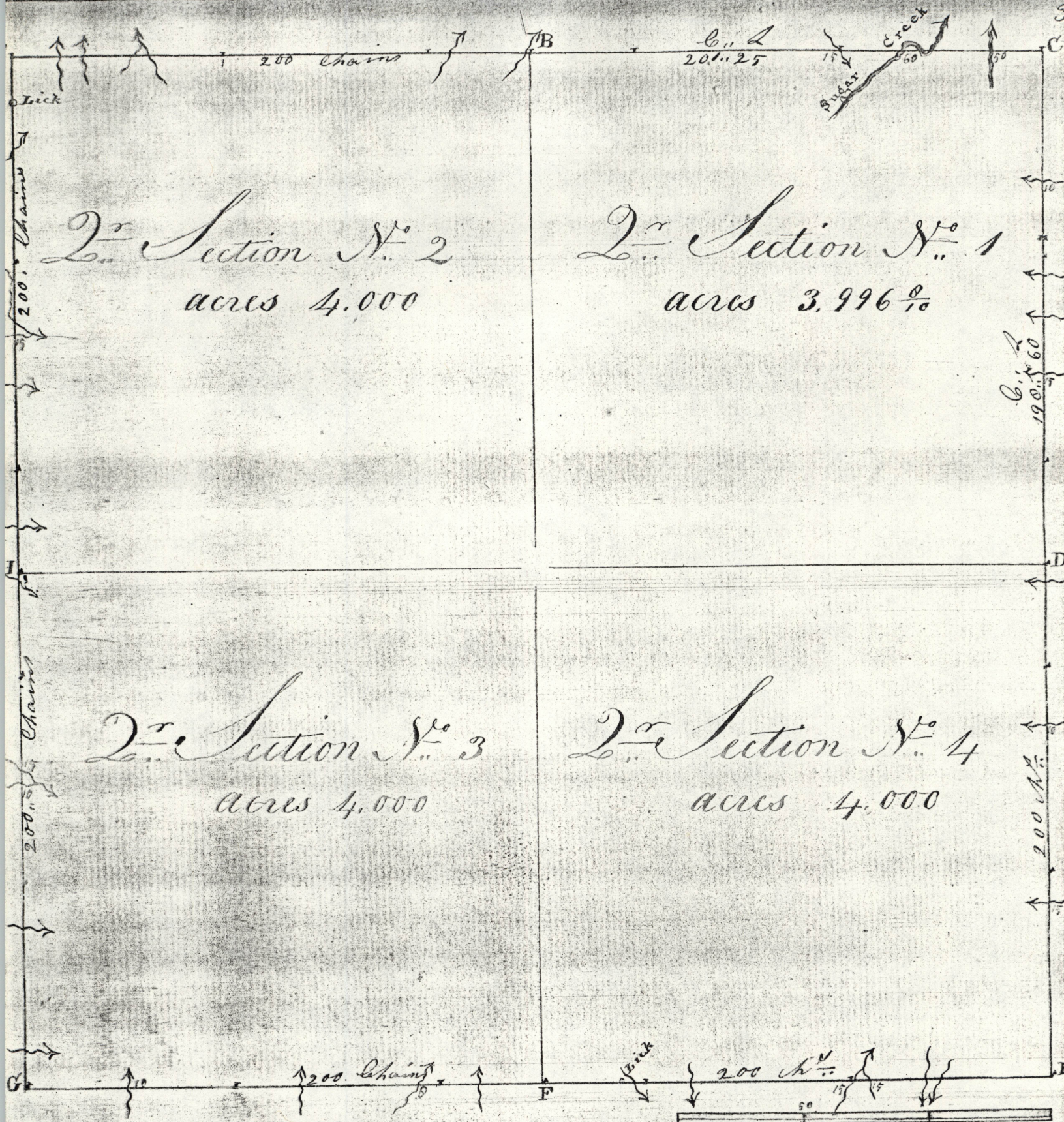
12" diam - bears N 64 W 27 links another white Oak

14" diam - bears S 9 W - 37 links Marked S

Description of Township N^o 8 Range N^o 4

Corner Posts bearings & trees		Distances		quality of the Lands	
Post	Kind of Wood	Inches diam	Course	Links	
			They bear	distant	
A	Aspin	5	S 9° W	10	From A to B good hill land timber
	D ^o	4	N 5° E	12	Oak, Chestnut &c
B	White Oak	36	N 5° W	39	from B to C first half good upland of the
	Maple	10	S 11.5° E	31	Last creek bottom, timber, Oak, Hickory, Chestnut, Thorn, aspin, Nine bark locust tree &c
C	White Oak	12	N 64° W	27	from C to D good farming land timber Oak
	D ^o	14	S 9° W	37	Hickory, Black walnut, Ash, Elm &c spicewood
D	White Oak	14	S 57° W	67	from D to E good Meadows & upland except the
	D ^o	14	N 27° E	41	last half mile is stony & poor timber, Oak, Chestnut, Hickory, sugar tree, Elm &c
E	Hickory	7	S 60° E	40	from E to F first 1/2 mile broken & stony
	Black Oak		N 71° W	52	rest mile good upland & bottom last mile high hills & broken no trees, oak, Hickory, Thorn, plum, hickory
F	White Oak	15	N 52.5° E	83	from F to G first mile nobby hills of thin soil
	D ^o	12	N 40° W	50	remainder midling good Land timber Oak, Hickory, Chestnut &c Oak brush
G	Hickory	4	N 30° W	46	from G to H good farming land with wide bot-
	White Oak	10	S 35° E	17	tom the streams, timber oak, Hickory, Maple, ash, Elm &c alder brush &c
H	White Oak	5	N 54° E	20	from H to A good hill land & creek bottom
	D ^o	30	S 83.30° W	49	timber, Oak, Hickory, Elm &c

* this post stands 1/10 south of the point of Intersection or true corner



2^d Section N^o 2
acres 4.000

2^d Section N^o 1
acres 3.996 $\frac{9}{10}$

2^d Section N^o 3
acres 4.000

2^d Section N^o 4
acres 4.000

TOWNSHIP N^o VIII }
RANGE N^o IV }

MILITARY DISTRICT

SCALE of Fifty Chains to an Inch