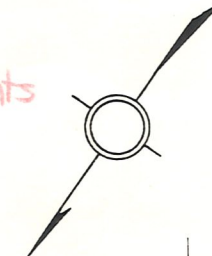


2nd Location U.S. 62
 Sec 25 T8 R9
 Richland Twp.

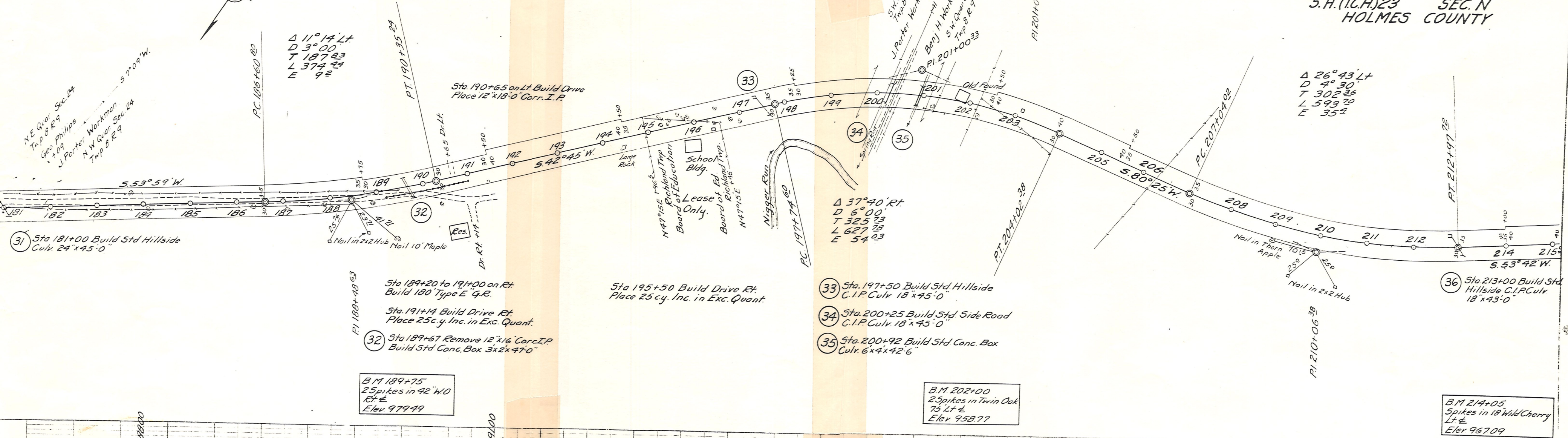
Copied from RLK Prints



FED AID DIST. NO.	STATE	FED AID PROJECT	FISCAL YEAR
10	OHIO		1927

9
73

S.H. (I.C.H.) 23 SEC. N
 HOLMES COUNTY



$\Delta 11^\circ 14' \text{ Lt}$
 $D 3^\circ 00'$
 $T 187.83$
 $L 374.24$
 $E 92$

$\Delta 26^\circ 43' \text{ Lt}$
 $D 4^\circ 30'$
 $T 302.36$
 $L 593.70$
 $E 352$

$\Delta 37^\circ 40' \text{ Rt}$
 $D 6^\circ 00'$
 $T 325.73$
 $L 627.78$
 $E 54.03$

31 Sta 181+00 Build Std Hillside
 Culv. 24" x 45'-0"

32 Sta 189+67 Remove 12" x 16" Corr. I.P.
 Build Std. Conc. Box 3x2x47'-0"

33 Sta. 197+50 Build Drive Rt.
 Place 25 cy. Inc. in Exc. Quant.

34 Sta. 200+25 Build Std. Side Road
 C.I.P. Culv. 18" x 45'-0"

35 Sta. 200+92 Build Std Conc. Box
 Culv. 6' x 4' x 42'-6"

36 Sta 213+00 Build Std Hillside
 C.I.P. Culv. 18" x 43'-0"

B.M. 189+75
 25 Spikes in 42" W.O.
 Rt. E
 Elev. 979.49

B.M. 202+00
 25 Spikes in Twin Oak
 75 Lt. E
 Elev. 958.77

B.M. 214+05
 Spikes in 18" Wild Cherry
 Lt. E
 Elev. 967.09

998900

00755

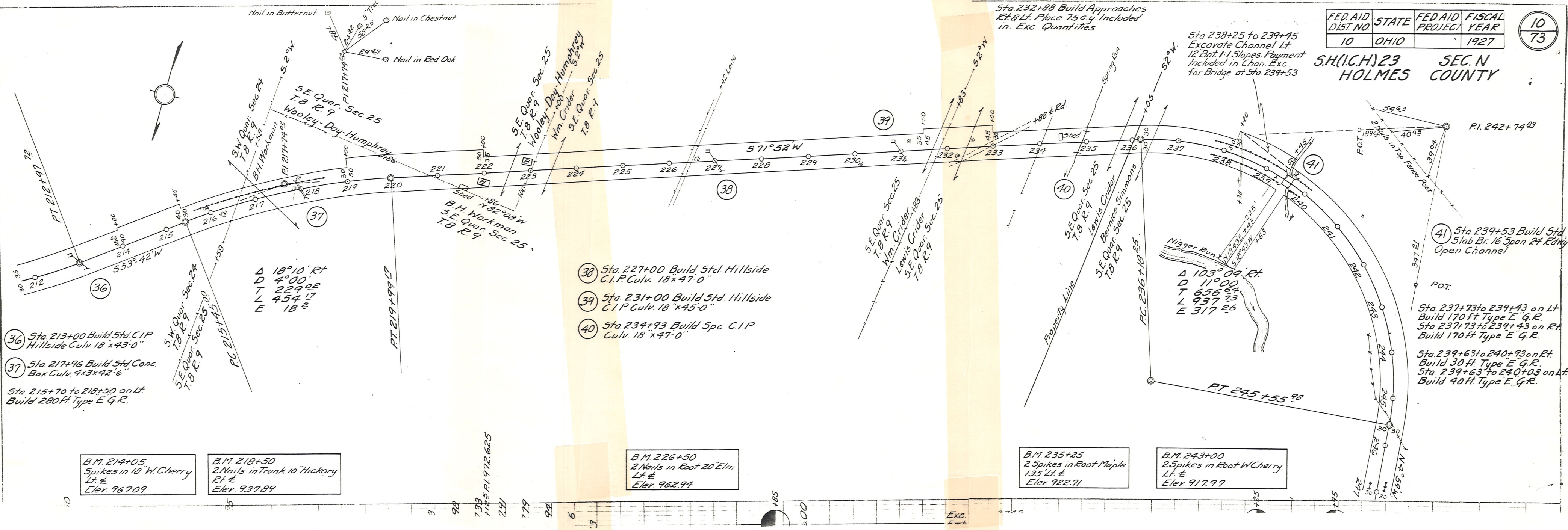
FED. AID DIST NO.	STATE	FED. AID PROJECT	FISCAL YEAR
10	OHIO		1927

10
73

S.H.(I.C.H.) 23 SEC. N
HOLMES COUNTY

Sta. 232+88 Build Approaches
Rt. 8 Lt. Place 75 c.y. Included
in Exc. Quantities

Sta. 238+25 to 239+45
Excavate Channel Lt
12' Bot. 1:1 Slopes. Payment
Included in Chan. Exc.
for Bridge at Sta 239+53



PLAN	DATE
NOTE BOOK	BY
NO.	DATE
ALIGNED CHECKED	
RT. OF WAY CHECKED	

B.M. 214+05
2 Spikes in 18" W. Cherry
Lt. E
Elev. 967.09

B.M. 218+50
2 Nails in Trunk 10" Hickory
Rt. E
Elev. 937.89

B.M. 226+50
2 Nails in Root 20" Elm
Lt. E
Elev. 962.94

B.M. 235+25
2 Spikes in Root Maple
Lt. E
Elev. 922.71

B.M. 243+00
2 Spikes in Root W. Cherry
Lt. E
Elev. 917.97

Δ 18° 10' Rt
D 4° 00' 02
T 229.02
L 454.17
E 18.2

Δ 103° 09' Rt
D 11° 00'
T 656.84
L 937.73
E 317.26

- 36 Sta. 213+00 Build Std. C.I.P. Hillside Culv. 18' x 43'-0"
- 37 Sta. 217+96 Build Std. Conc. Box Culv. 4x3x42'-6"
- 38 Sta. 227+00 Build Std. Hillside C.I.P. Culv. 18' x 47'-0"
- 39 Sta. 231+00 Build Std. Hillside C.I.P. Culv. 18' x 45'-0"
- 40 Sta. 234+93 Build Spc. C.I.P. Culv. 18' x 47'-0"
- 41 Sta. 239+53 Build Std. Slab Br. 16' Span 24' Rchky Open Channel

Sta. 237+73 to 239+43 on Lt.
Build 170 ft Type E G.R.
Sta. 237+73 to 239+43 on Rt.
Build 170 ft Type E G.R.
Sta. 239+63 to 240+93 on Rt.
Build 30 ft Type E G.R.
Sta. 239+63 to 240+03 on Lt.
Build 40 ft Type E G.R.

FED. AID DIST. NO.	STATE	FED. AID PROJECT	FISCAL YEAR
10	OHIO		1927

S.H. (I.C.H.) 23 SEC. N
HOLMES COUNTY

11
7

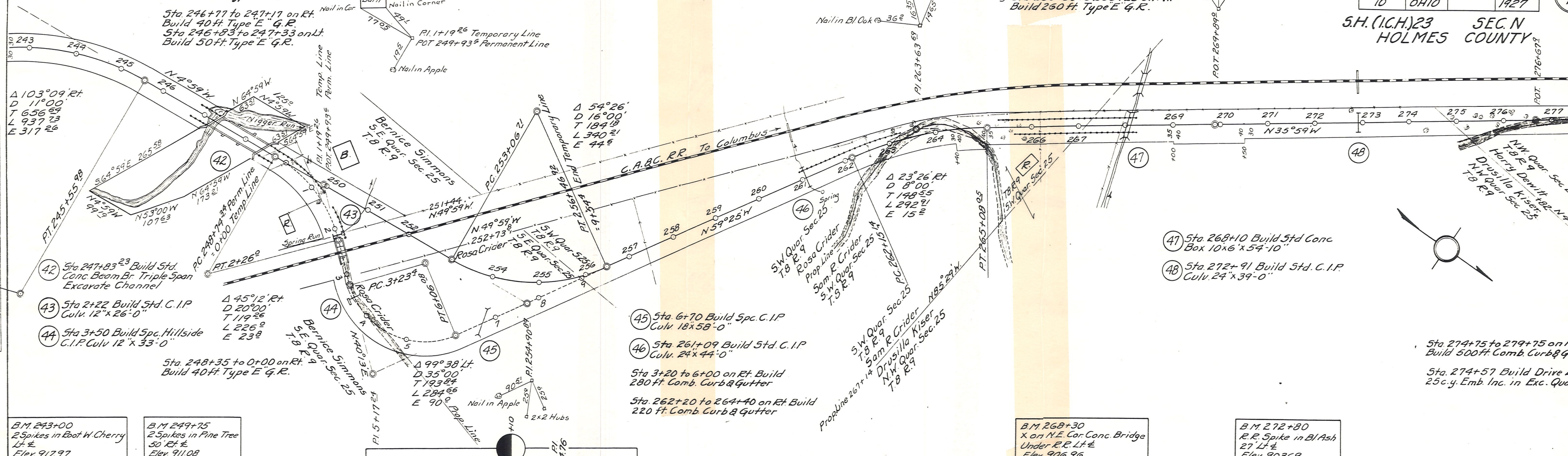
Sta 243+00 to 247+00 on Lt.
Build 150 ft. Type E G.R.
Sta 1+55 to 2+25 on Lt.
Build 70 ft. Type E G.R.

Sta 261+00 to 263+30 on Lt.
Build 230 ft. Type E G.R.

Sta 265+25 to 268+25 on Lt.
Build 300 ft. Type E G.R.

Sta 265+65 to 268+25 on Rt.
Build 260 ft. Type E G.R.

Nails in 2x2 Hubs in RR Fence



$\Delta 103^{\circ}09' \text{ Rt.}$
 $D 11^{\circ}00'$
 $T 656.69$
 $L 937.23$
 $E 317.26$

$\Delta 54^{\circ}26'$
 $D 16^{\circ}00'$
 $T 184.18$
 $L 340.21$
 $E 44.6$

$\Delta 23^{\circ}26' \text{ Rt.}$
 $D 8^{\circ}00'$
 $T 148.55$
 $L 292.91$
 $E 15.2$

$\Delta 45^{\circ}12' \text{ Rt.}$
 $D 20^{\circ}00'$
 $T 119.26$
 $L 226.0$
 $E 23.8$

$\Delta 99^{\circ}38' \text{ Lt.}$
 $D 35^{\circ}00'$
 $T 193.84$
 $L 284.66$
 $E 90.0$

B.M. 243+00
25 Spikes in Root W. Cherry
Lt. E
Elev. 917.97

B.M. 249+75
25 Spikes in Pine Tree
50' Rt. E
Elev. 911.08

B.M. 268+30
X on N.E. Cor. Conc. Bridge
Under R.R. Lt. E
Elev. 906.96

B.M. 272+80
R.R. Spike in Bl. Ash
27' Lt. E
Elev. 903.69

Exc	2410 cu.	Exc	4715 cu.	Exc	4621 cu.	Exc	2354 cu.	Exc	1254 cu.	Exc	1207 cu.
-----	----------	-----	----------	-----	----------	-----	----------	-----	----------	-----	----------

PLAN
S. L. S. VED
PLOTTED
ALIGNMENT CHECKED
RT. OF WAY CHECKED
NOTE BOOK NO.
NO.

