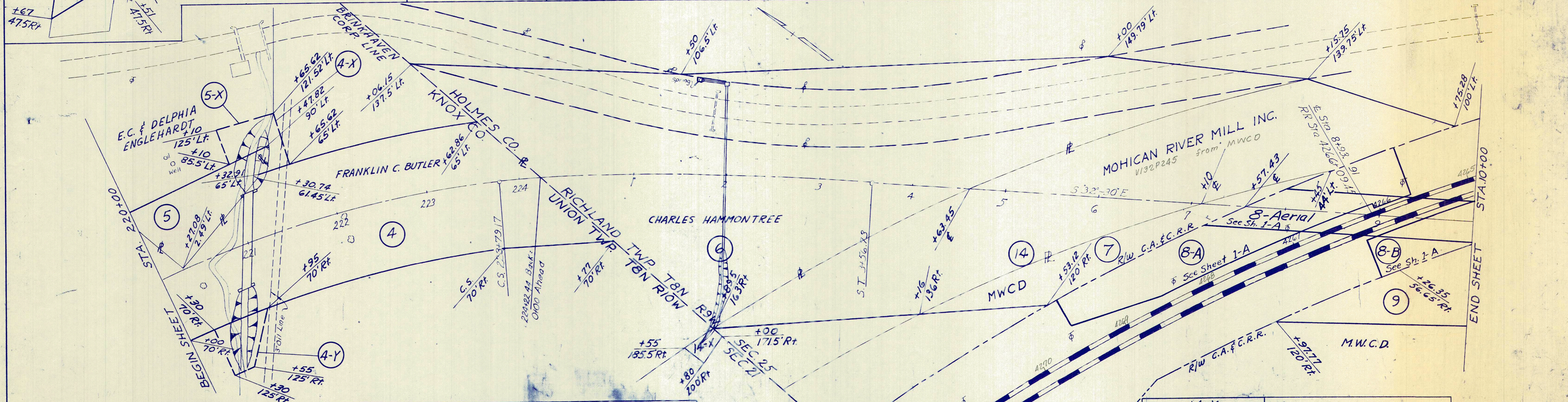
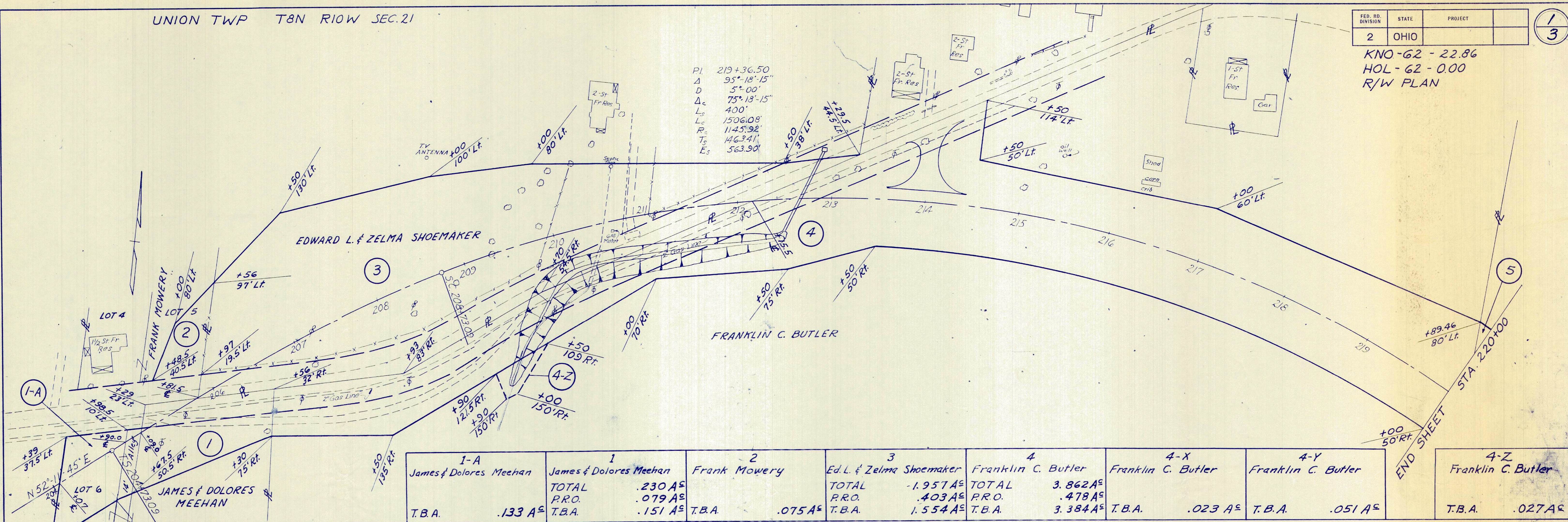


KNO-62 - 22.86
 HOL-62 - 0.00
 R/W PLAN

PI. 219+36.50
 Δ 95°-18'-15"
 D 5°-00'
 Δc 75°-13'-15"
 Lc 400'
 R 1506.08'
 P 1145.92'
 T 146.341'
 E 563.90'



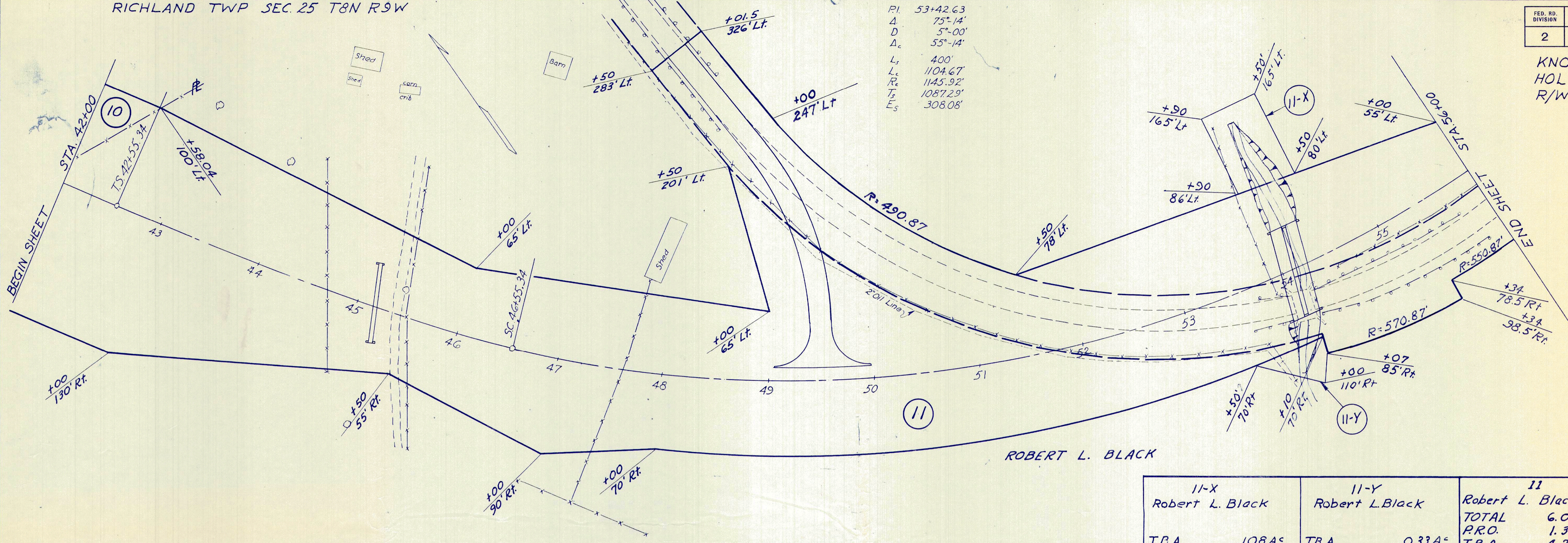
5-X	5	6	7
E.C. & Delphia Englehardt	E.C. & Delphia Englehardt	Charles Hammontree	M.W.C.D.
T.B.A.	T.B.A.	TOTAL 2.850 A ^c P.R.O. 1.014 A ^c T.B.A. 1.836 A ^c	T.B.A.
.042 A ^c	.181 A ^c		.266 A ^c

14-X	14
MOHICAN RIVER MILL INC.	MOHICAN RIVER MILL INC.
T.B.A.	TOTAL 1.509 A ^c P.R.O. .016 A ^c T.B.A. 1.509 A ^c
.016 A ^c	

RICHLAND TWP SEC. 25 T8N R9W

FED. RD. DIVISION	STATE	PROJECT	
2	OHIO		

KNO-62-22.86
HOL-62-000
R/W PLAN



PI. 53+42.63
Δ 75°-14'
D 5°-00'
Δc 55°-14'
Lc 400'
Lc 1104.67'
Rc 1145.92'
Tc 1087.29'
Ls 308.08'

11-X Robert L. Black	11-Y Robert L. Black	11 Robert L. Black	12 Cloyd & Hazel Devore
T.B.A.	T.B.A.	TOTAL 6.059 A ^c P.R.O. 1.328 A ^c T.B.A. 4.731 A ^c	TOTAL 1.900 A ^c P.R.O. .746 A ^c T.B.A. 1.154 A ^c
.108 A ^c	.033 A ^c		
12-X Cloyd & Hazel Devore	12-Y Cloyd & Hazel Devore	13 Willis & Helen Robinson	
T.B.A.	T.B.A.	TOTAL 1.041 A ^c P.R.O. .437 A ^c T.B.A. .604 A ^c	
.044 A ^c	.052 A ^c		

RICHLAND TWP SEC. 25 T8N R9W

