

FED.AID DIST. NO.	STATE	FED.AID PROJECT	FISCAL YEAR
10	OHIO		1927

1
73

S.H. (I.C.H.) 23 SEC. N
HOLMES COUNTY

STATE OF OHIO
DEPARTMENT OF HIGHWAYS
COLUMBUS MILLERSBURG ROAD

I.C.H. NO. 23 SEC. N PET. NO. 6047

HOLMES COUNTY

RICHLAND TOWNSHIP DEC. 1927

The Standard Specifications of the State of Ohio, Department of Highways in force on date of contract will govern this improvement.

I hereby approve these plans and declare that the making of this improvement will require the closing to traffic of the highway and that detours will be provided as shown on the plan and estimates

Approved: Karl Snyder
Date, 4/9/28 Resident District Deputy Director

Approved: Walter J. Smith
Date, 7-16-28 Resident Division Deputy Director

Approved: Robt. S. Beightler
Date, 4/24/28 Chief Engineer
Bureau of Construction

Approved: _____
Date, _____ Chief Engineer
Bureau of Maintenance

Approved: J. Purkey
Date, 7-22-28 Chief Engineer
Bureau of Bridges

Approved: Harry J. Kirk
Date, 7-26-28 Chief Engineer

Approved: G. F. Schlesinger
Date, 4-18-28 Director of Highways

Recommended for Approval: _____
Date, _____ District Engineer
Bureau of Public Roads

Recommended for Approval: _____
Date, _____ Chief Engineer
Bureau of Public Roads

Approved: _____
Date, _____ Chief of Bureau

CONVENTIONAL SIGNS

State Line	—————
County Line	—————
Township Line	—————
Section Line	—————
Property Line not fenced	—————
Center Line	—○—○—
City or Village Line	—————
Fence	—x—x—
Telephone or Telegraph	—T—T—T—
Steam Railroad	— — — — —
Electric Line	— — — — —
Guard Rail	—•—•—•—•—
Drain Pipe - new	—•—•—•—•—
Drain Pipe - old	—•—•—•—•—

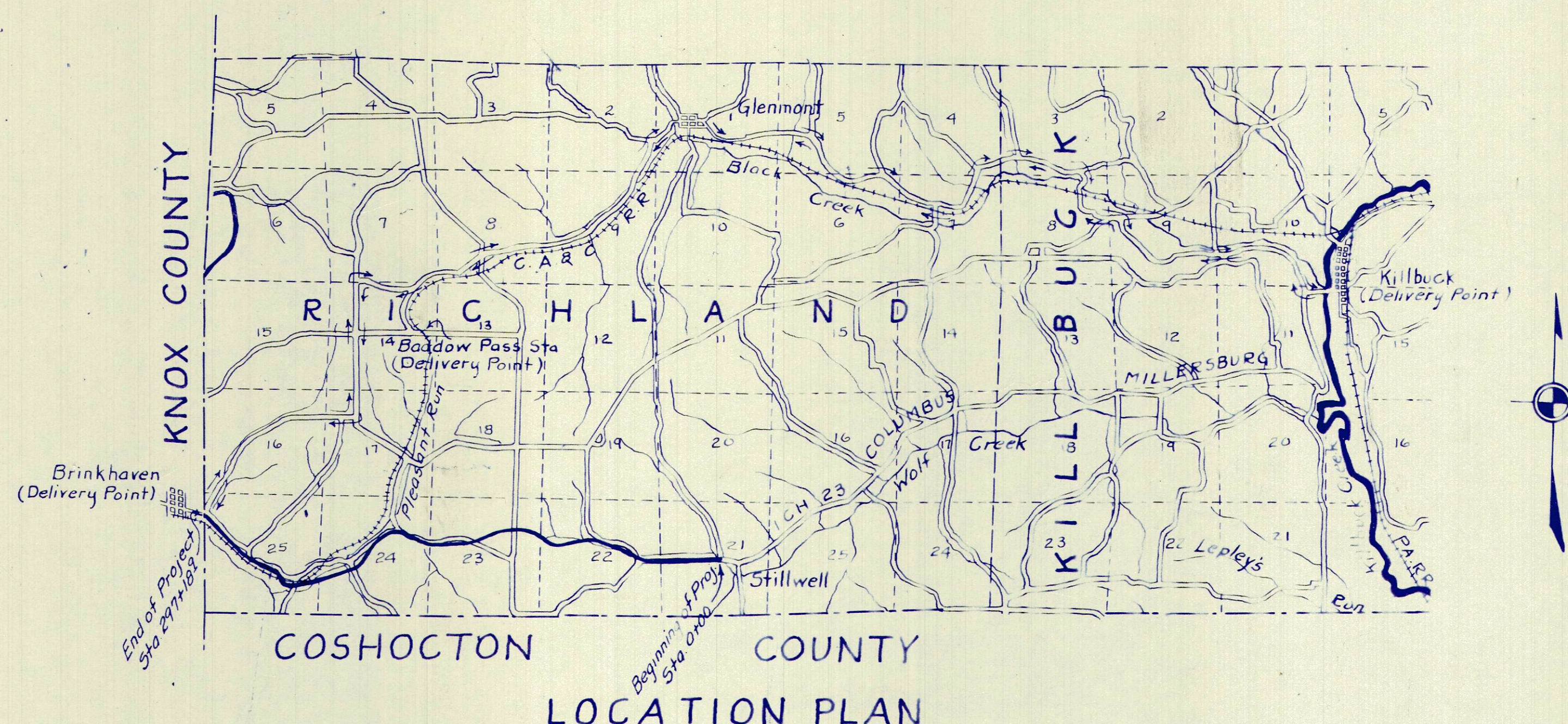
We, the Commissioners of Holmes County, hereby approve these plans and certify that the right-of-way 60 feet wide is available for the construction maintenance and repair of the above highway.

J. A. Mullet

H. H. Allison

S. W. Hanna

Date, _____ County Commissioners



LOCATION PLAN

SCALE OF MILES



PORTION TO BE IMPROVED	—————
DETOURS SHOWN THUS	—•—•—•—•—
IMPROVED ROADS	—•—•—•—•—

SCALES

Plan	1" = 100'
Profile (Vertical)	1" = 10'
Profile (Horizontal)	1" = 100'
Cross Sections	1" = 5'

INDEX

Title Page	1
Typical Cross Section	2
Plans and Profile	3-12
Cross Sections	13-51
Structural Plans	52-67
Curve Tables	68-71
Summary sheets	72-73

Supplemental Prints of Structural Standards
Drawings V.

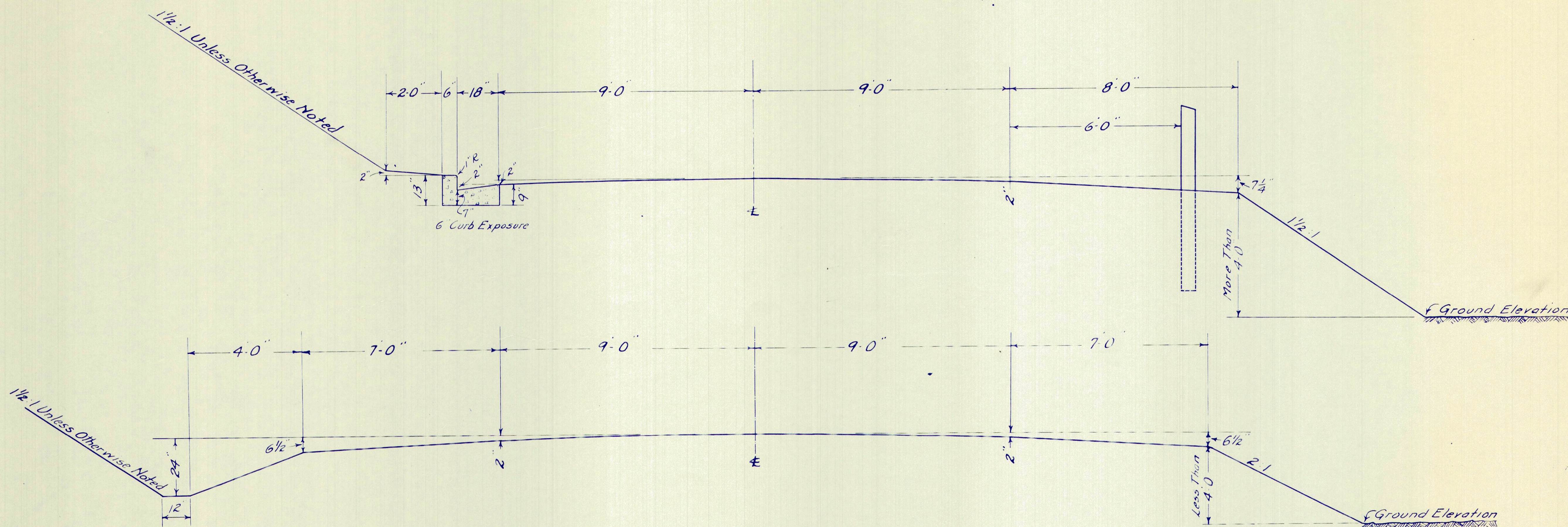
300
301
186
417
56 2430

FED. AID DIST. NO.	STATE	FED. AID PROJECT	FISCAL YEAR
10	OHIO		1927

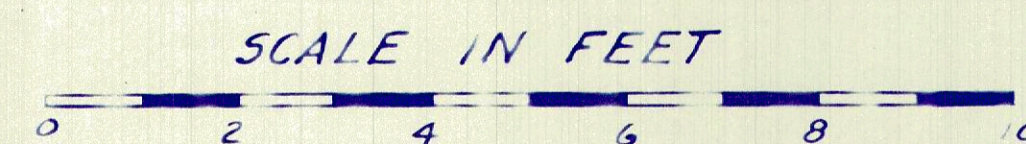
2
73

S.H.(I.C.H.)23 SEC.N
HOLMES COUNTY

TYPE-GRADING AND DRAINAGE STRUCTURES



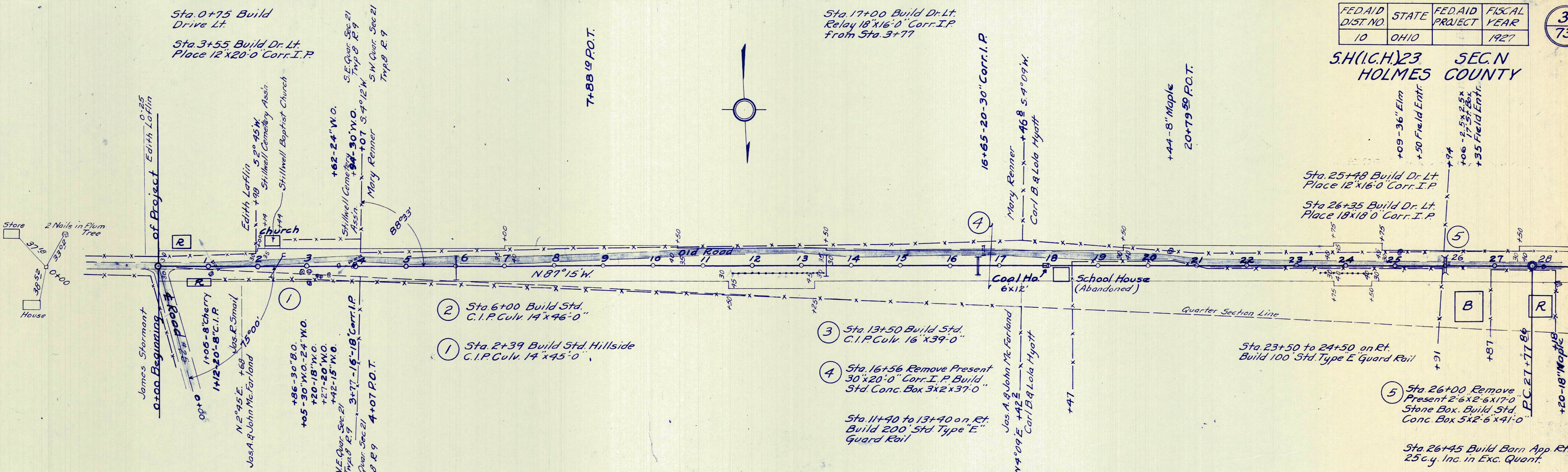
TYPICAL SECTIONS



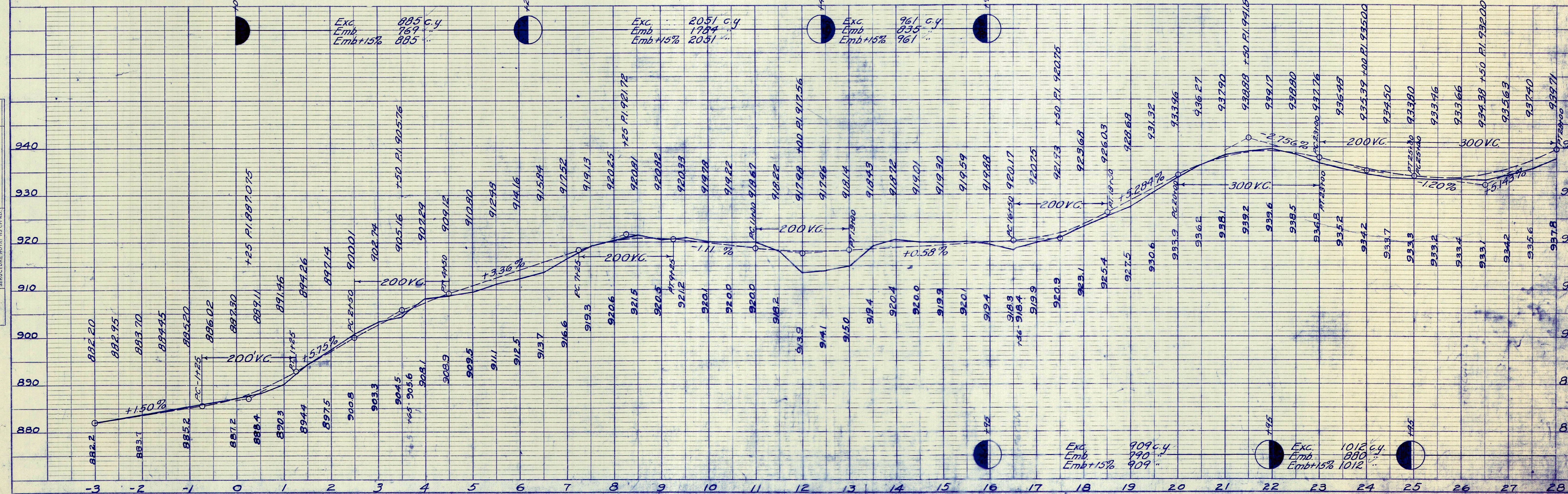
Note: All Curves Will Be Superelevated and on All Curves Over 5° Will Be Widened See Schedule of Widening and Superelevation

FED.AID DIST. NO.	STATE	FED.AID PROJECT	FISCAL YEAR
10	OHIO		1927

S.H.(C.H.)23 SEC.N
HOLMES COUNTY



U.S.G.S. B.M. 690'E of Stillwell. Iron Post Stamped 889 Elev. 889.03	B.M. Sta. 0+50 2 Nails in Root Apple Lt. & Elev. 891.24	B.M. Sta. 3+65 25 Spikes in Bl. Oak Lt. & Elev. 911.88	B.M. Sta. 9+75 25 Spikes in 10" Wild Cherry Lt. & Elev. 930.16	B.M. Sta. 17+50 2 Nails in 36" W.O. Lt. & Elev. 926.95	B.M. Sta. 25+10 2 Nails in 36" W.O. Lt. & Elev. 937.78
--	---	--	--	--	--

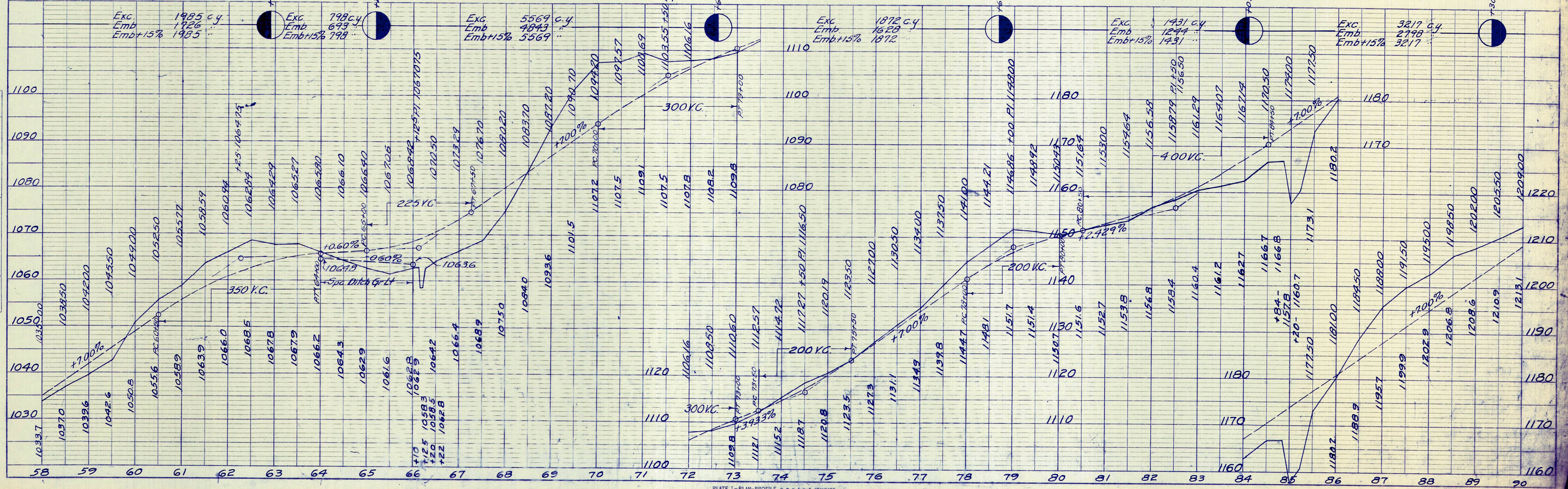
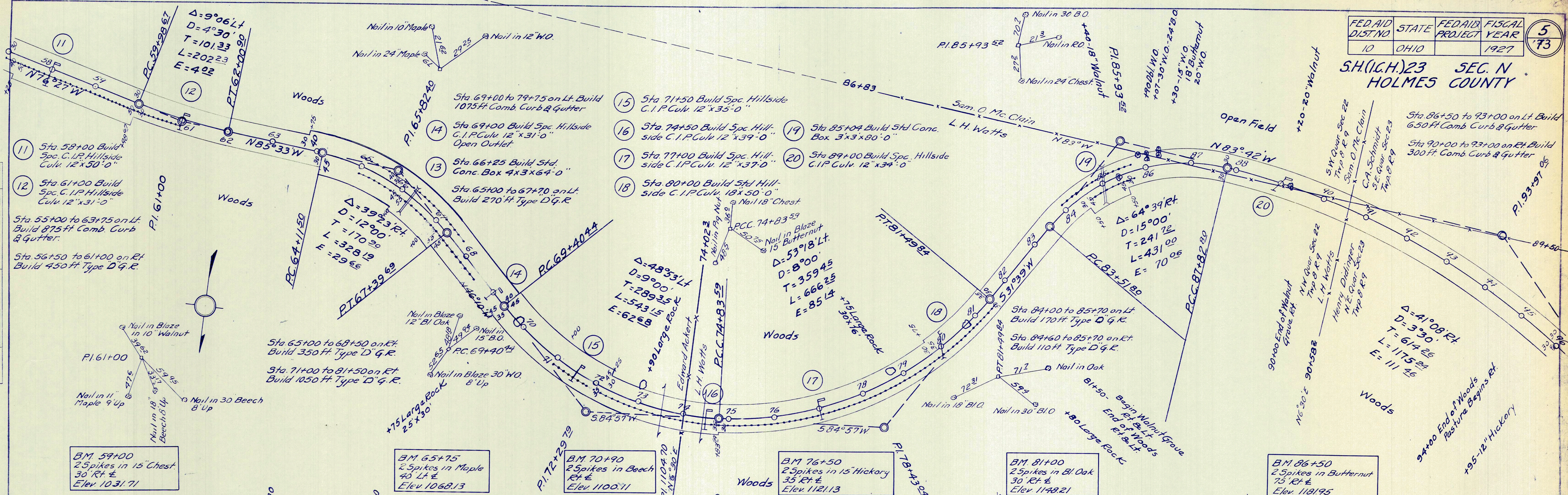


PLAN

SURVEYED	BY	DATE
PLOTTED		
NOTE BOOK CHECKED		
RT. GRAYN CHECKED		
NO.		

PROFILE

SURVEYED	BY	DATE
PLOTTED		
GRADES CHECKED		
STRUCTURE NOTATION CHECKED		
NO.		

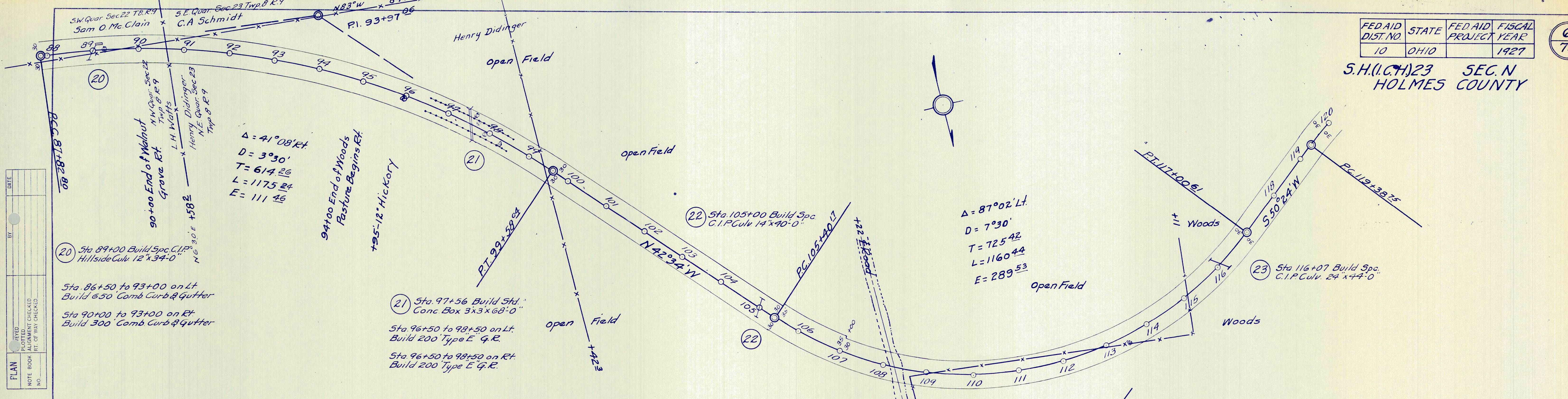


PLAN
EYED
PLOTTED
CHECKED
BY DATE
NOTE BOOK NO.
STRUCTURE NOTATIONS CH. NO.

PROFILE
SURVEYED
CHECKED
BY DATE
NOTE BOOK NO.
STRUCTURE NOTATIONS CH. NO.

FED AID DIST. NO.	STATE	FED AID PROJECT YEAR	FISCAL YEAR
10	OHIO		1927

S.H.(I.C.H.)23 SEC. N
HOLMES COUNTY



PLAN	DATE
BY	
DATE	
BY	
DATE	
BY	
DATE	

20 Sta 89+00 Build Spc. C.I.P. Hillside Culv. 12'x34'-0"

Sta. 86+50 to 93+00 on Lt. Build 650' Comb Curb & Gutter

Sta 90+00 to 93+00 on Rt. Build 300' Comb Curb & Gutter

21 Sta. 97+56 Build Std. Conc Box 3x3x68'-0"

Sta. 96+50 to 98+50 on Lt. Build 200' Type E' G.R.

Sta 96+50 to 98+50 on Rt. Build 200' Type E' G.R.

23 Sta 116+07 Build Spc. C.I.P. Culv. 24'x44'-0"

B.M. 92+30
25 spikes in 18" W.O.
Rt. E
Elev. 1226.11

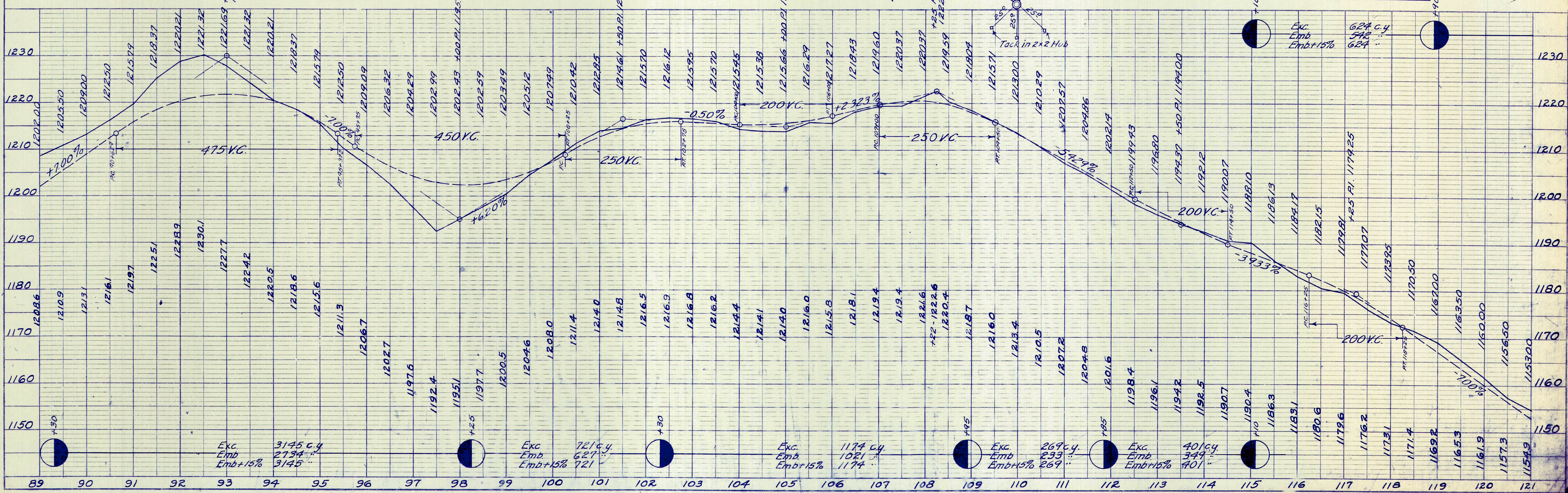
B.M. 96+75
Spikes in W.O.
Rt. E
Elev. 1201.20

B.M. 108+50
25 Spikes in Hick
150' N.
Elev. 1220.32

B.M. 114+60
25 spikes in 15" W.O.
Rt. E 50'
Elev. 1187.63

B.M. 119+45
25 spikes in 18" Maple
50' Rt. E
Elev. 1159.03

PROFILE	DATE
BY	
DATE	
BY	
DATE	
BY	
DATE	



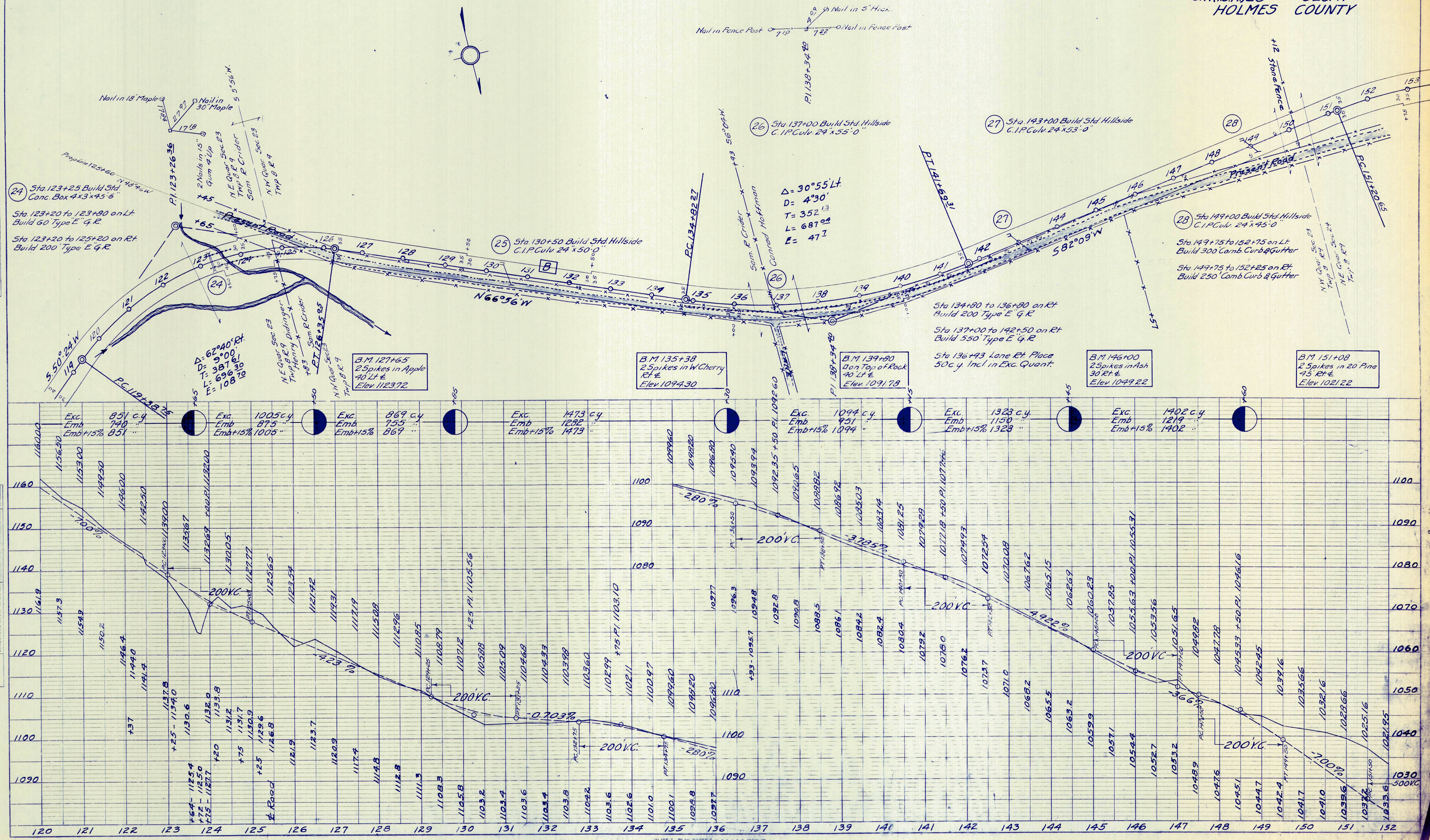
FEDAID DIST NO	STATE	FEDAID PROJECT	FISCAL YEAR
10	OHIO		1927

7
73

S.H.(I.C.H.)23 SEC. N
HOLMES COUNTY

PLAN
BY
DATE
NO.
NOTE BOOK
ALIGNED CHECKED
RT. OF WAY CHECKED

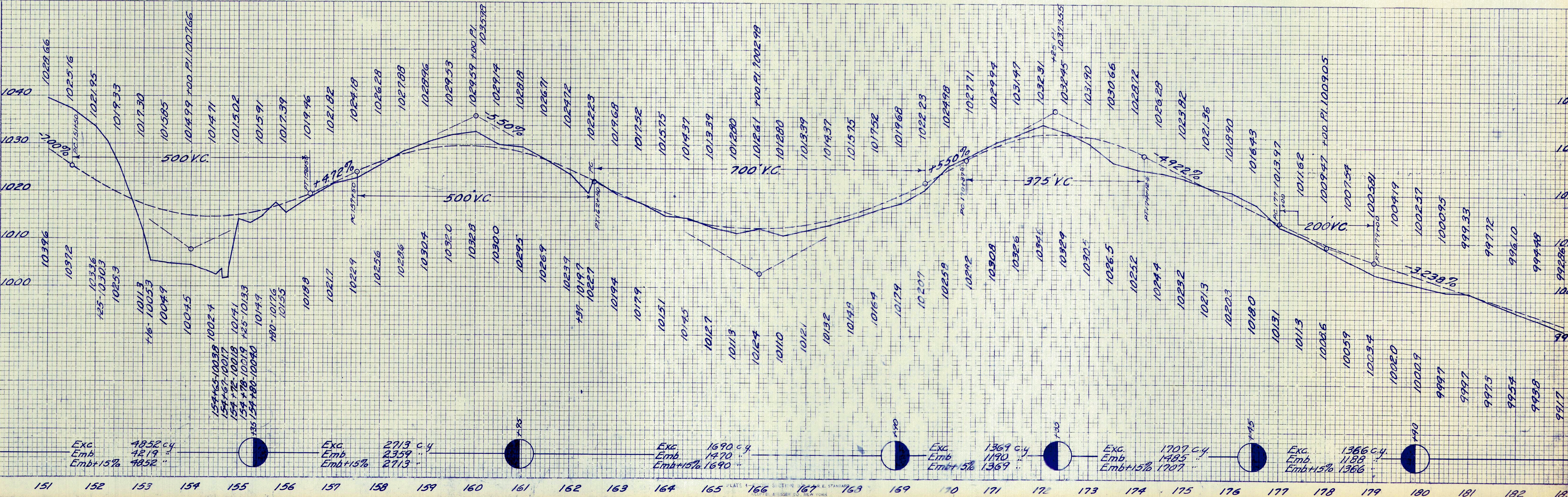
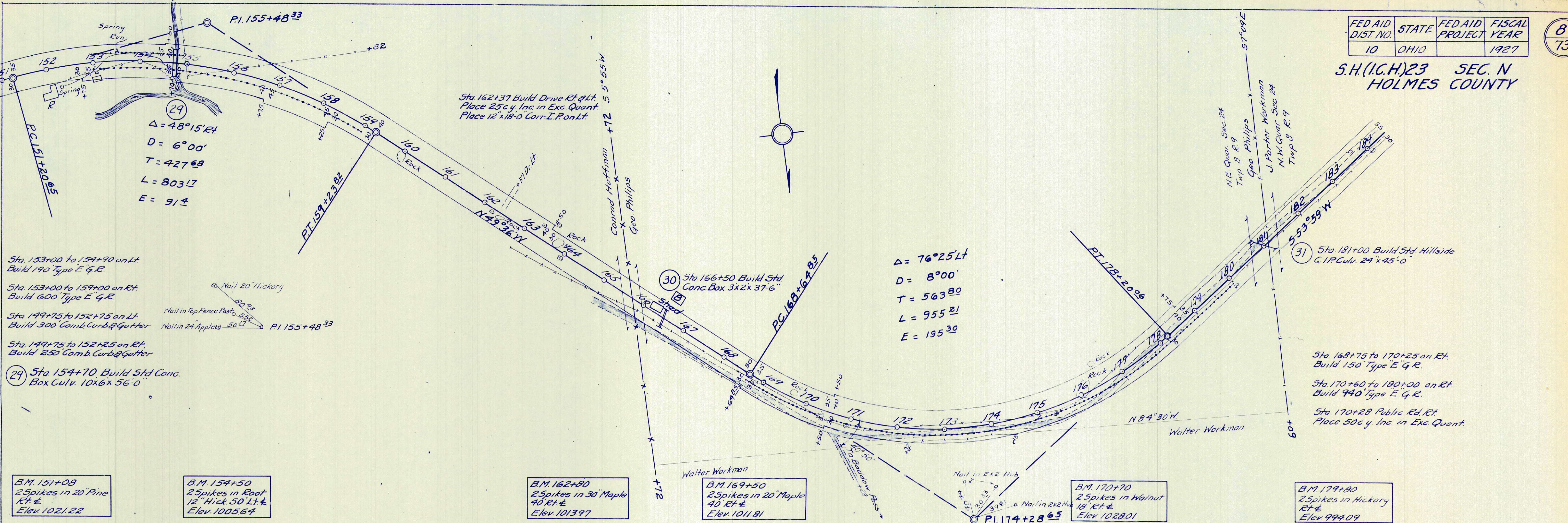
PROFILE
BY
DATE
NO.
NOTE BOOK
GROUPS CHECKED
STRUCTURE NOTATIONS CHECKED



S.H.(I.C.H.)23 SEC. N
HOLMES COUNTY

FINAL SURVEY PLOTTED AREAS CHECKED

ORIGINAL SURVEY PLOTTED AREAS CHECKED



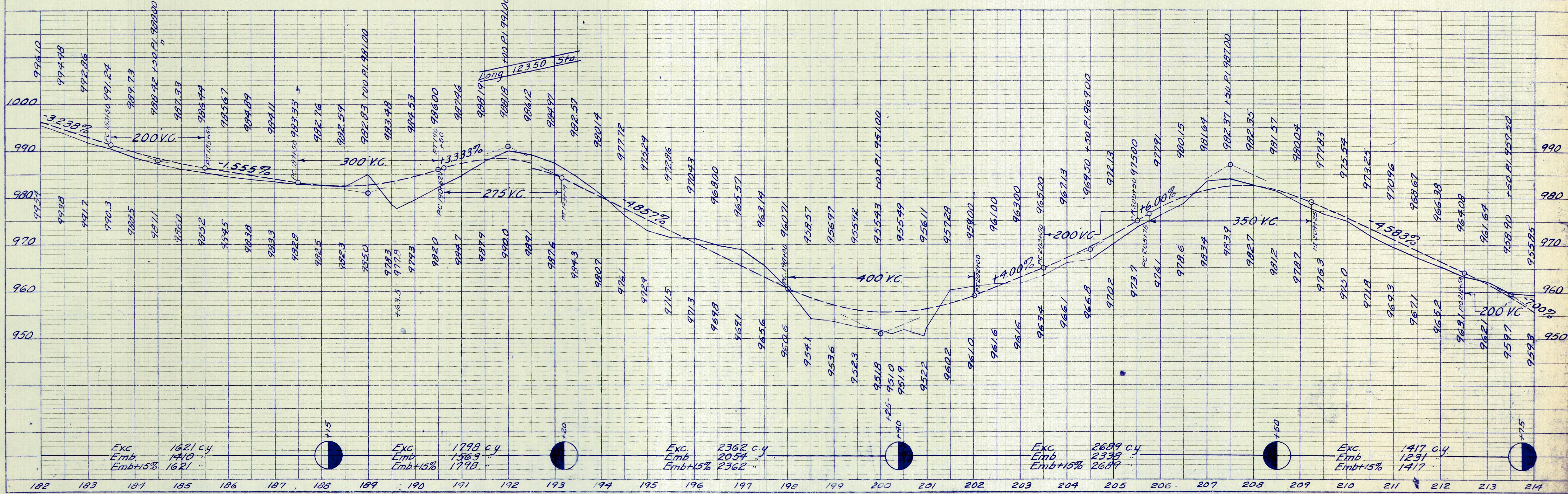
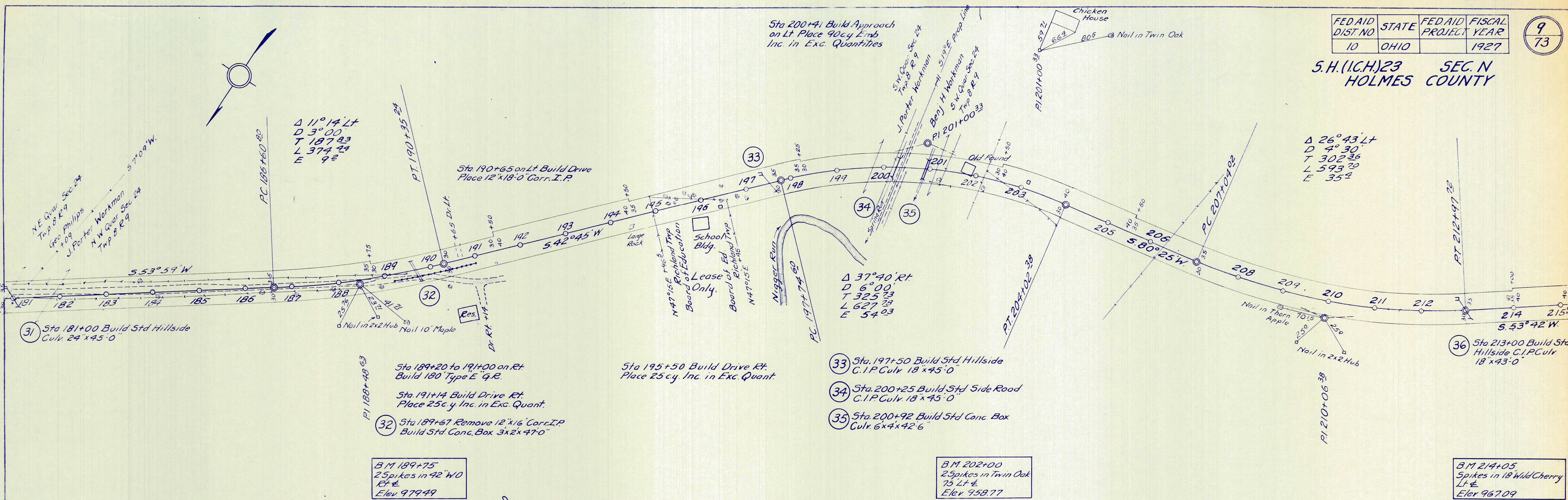
FED AID DIST NO	STATE	FED AID PROJECT YEAR	FISCAL YEAR
10	OHIO		1927

9
73

S.H.(I.C.H.)23 SEC. N
HOLMES COUNTY

PLAN
DATE
BY
CHECKED
NOTE BOOK ALIGNMENT CHECKED
NO. RT. OF W.A. CHECKED

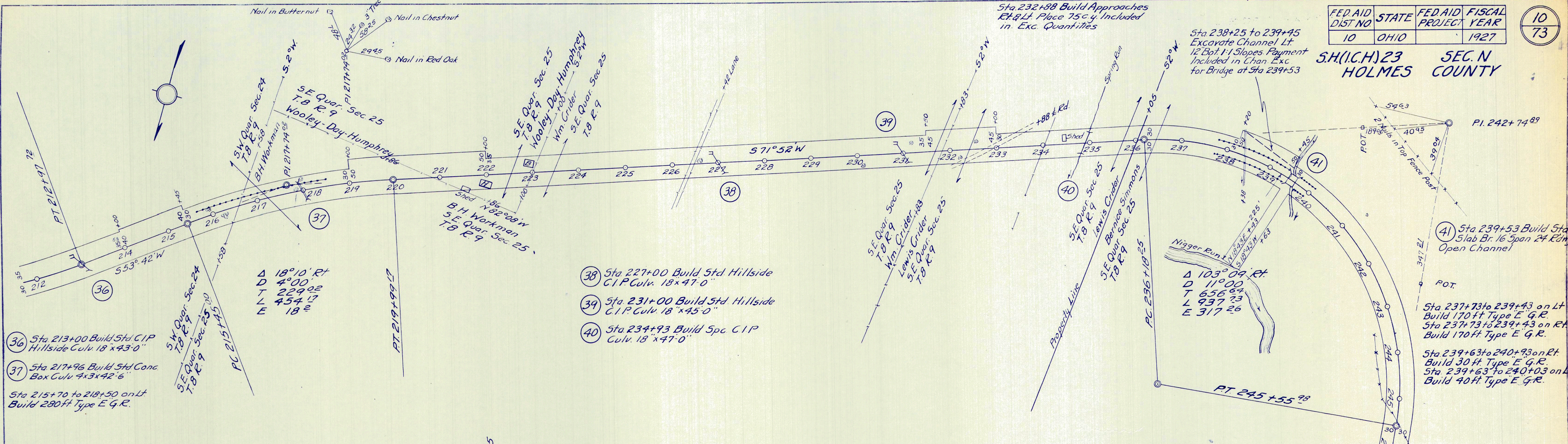
PROFILE
DATE
BY
CHECKED
NOTE BOOK GRADES CHECKED
NO. B.M.'S NOTED
STRUCTURE (ROTATING CH. RD.)



FED. AID DIST. NO.	STATE	FED. AID PROJECT	FISCAL YEAR
10	OHIO		1927

10
73

**S.H.(I.C.H.) 23 SEC. N
HOLMES COUNTY**



DATE: _____ BY: _____
 TESTED: _____
 PLOTTED: _____
 ALIGNMENT CHECKED: _____
 RT. OF WAY CHECKED: _____
 NO. _____

- 36 Sta 213+00 Build Std. C.I.P. Hillside Culv. 18' x 43'-0"
- 37 Sta 217+96 Build 5th Conc. Box Culv. 4' x 3' x 42'-6"
- Sta 215+70 to 218+50 on Lt. Build 280' Type E.G.R.

- 38 Sta 227+00 Build 5th Hillside C.I.P. Culv. 18' x 47'-0"
- 39 Sta 231+00 Build 5th Hillside C.I.P. Culv. 18' x 45'-0"
- 40 Sta 234+93 Build Spc. C.I.P. Culv. 18' x 47'-0"

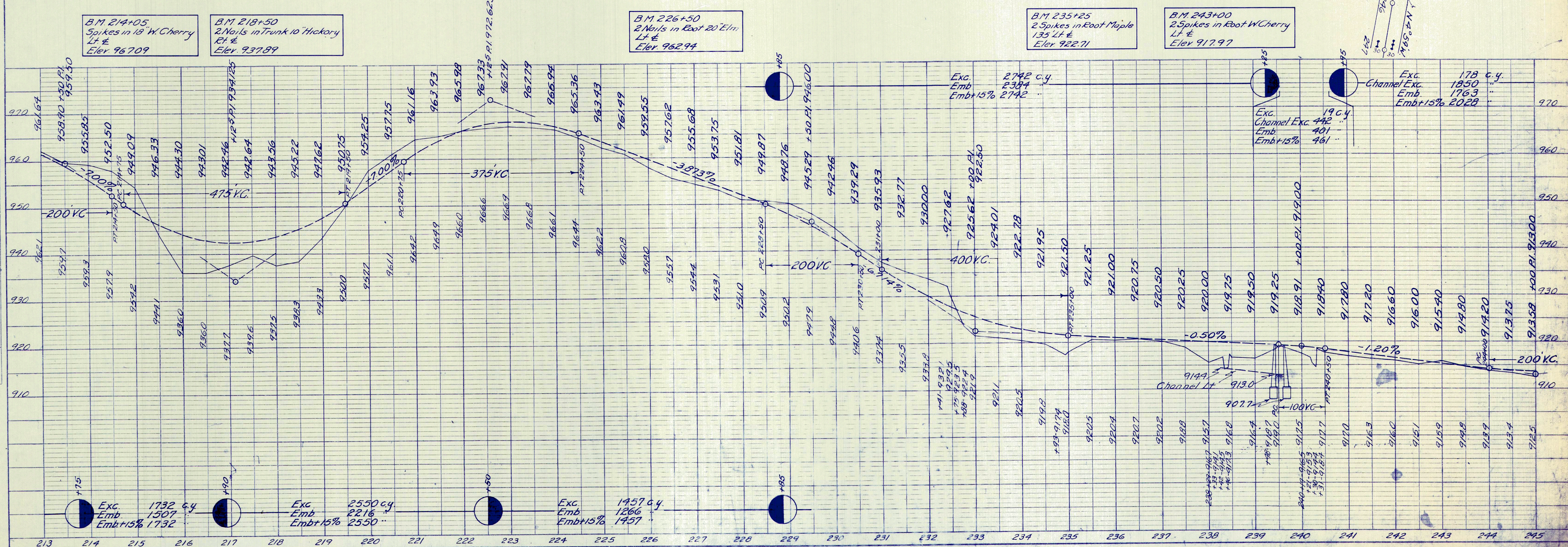
B.M. 214+05
2 Spikes in 18" W. Cherry
Lt. & E
Elev. 967.09

B.M. 218+50
2 Nails in Trunk 10" Hickory
Rt. & E
Elev. 937.89

B.M. 226+50
2 Nails in Root 20" Elm
Lt. & E
Elev. 962.94

B.M. 235+25
2 Spikes in Root Maple
135' Lt. & E
Elev. 922.71

B.M. 243+00
2 Spikes in Root W. Cherry
Lt. & E
Elev. 917.97



DATE: _____ BY: _____
 SURVEYED: _____
 PLOTTED: _____
 CHECKED: _____
 NO. _____

FED.AID DIST. NO.	STATE	FED.AID PROJECT	FISCAL YEAR
10	OHIO		1927

11
73

S.H. (I.C.H.) 23 SEC. N
HOLMES COUNTY

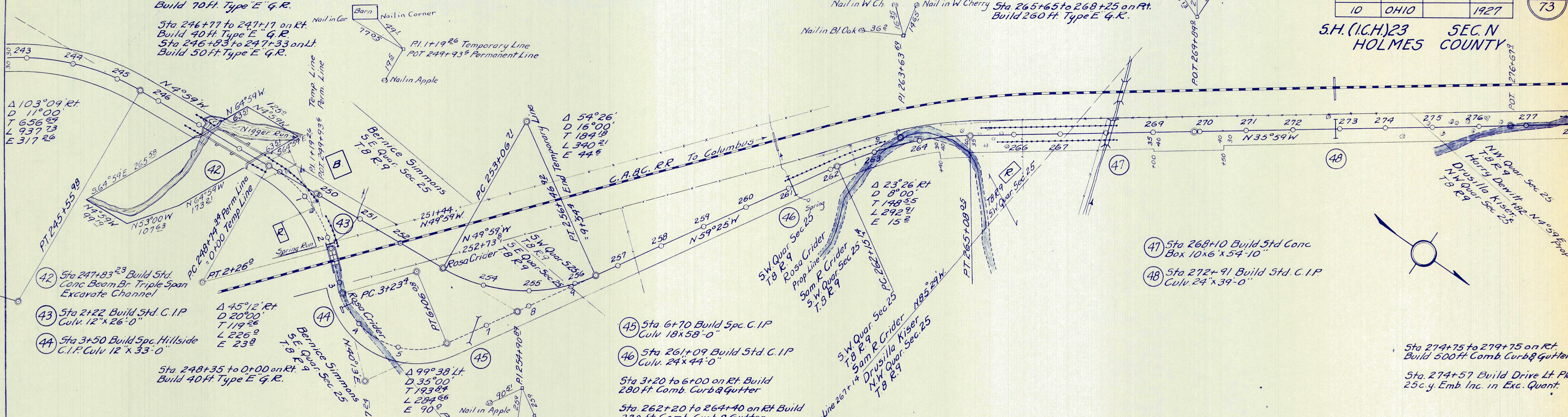
Sta 248+50 to 1+25 on Lt.
Build 150 ft. Type E' G.R.
Sta 1+55 to 2+25 on Lt.
Build 70 ft. Type E' G.R.

Sta 261+00 to 263+30 on Lt.
Build 230 ft. Type E' G.R.

Sta. 265+25 to 268+25 on Lt.
Build 300 ft. Type E' G.R.
Sta. 265+65 to 268+25 on Rt.
Build 260 ft. Type E' G.R.

Nails in 2x2 Hubs in RR Fence

PLAN
CHECKED
DATE
BY
NO.
NOTE BOOK
ALIGNED/CHECKED
RT. OF WAY CHECKED

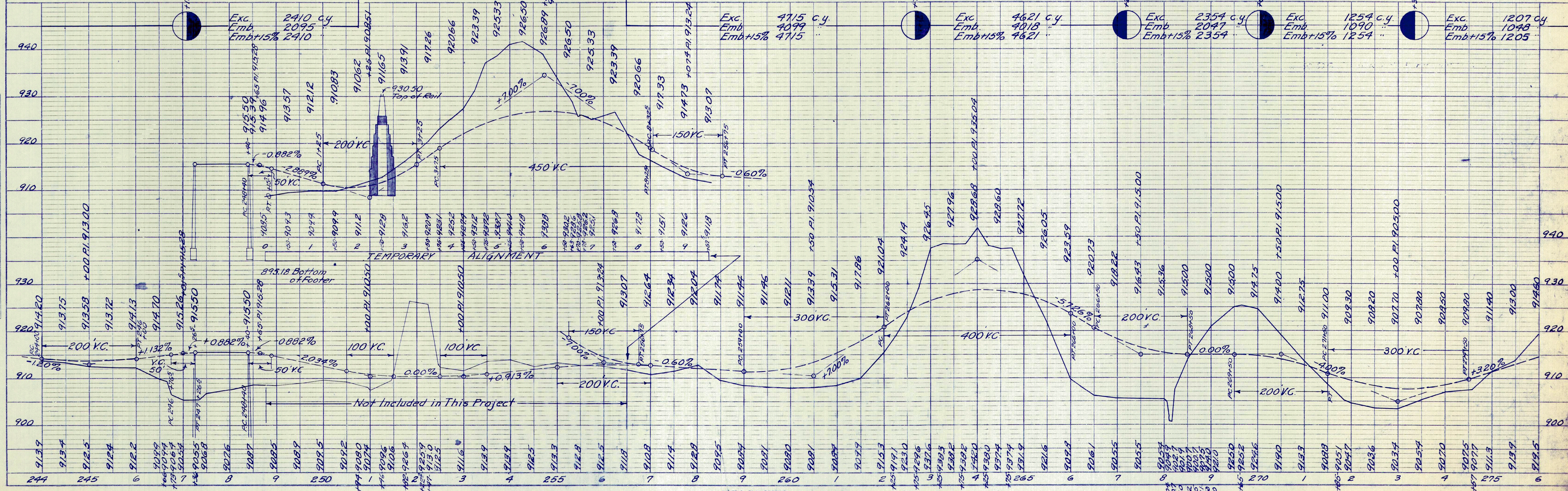


B.M. 243+00
2 Spikes in Root W Cherry
50 ft. Lt. E.
Elev. 917.97

B.M. 249+75
2 Spikes in Pine Tree
50 ft. Lt. E.
Elev. 911.08

B.M. 268+30
X on NE. Cor. Conc. Bridge
Under R.R. Lt. E.
Elev. 906.96

B.M. 272+80
R.R. Spike in Bl. Ash
27 ft. Lt. E.
Elev. 903.69



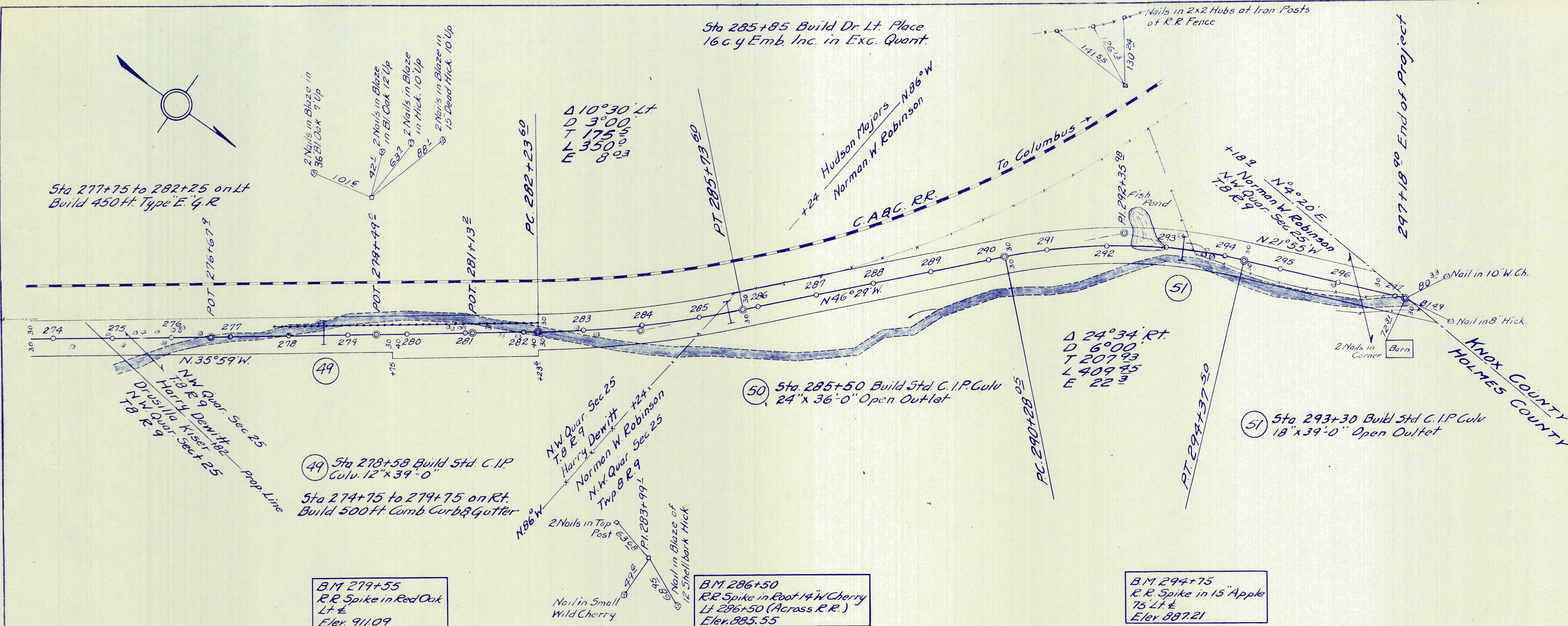
PROFILE
SURVEYED
NOTE BOOK
GRADES CHECKED
R. M. NOTED
STRUCTURE ROTATIONS CH. KD.

FED.AID DIST. NO.	STATE	FED.AID PROJECT	FISCAL YEAR
10	OHIO		1927

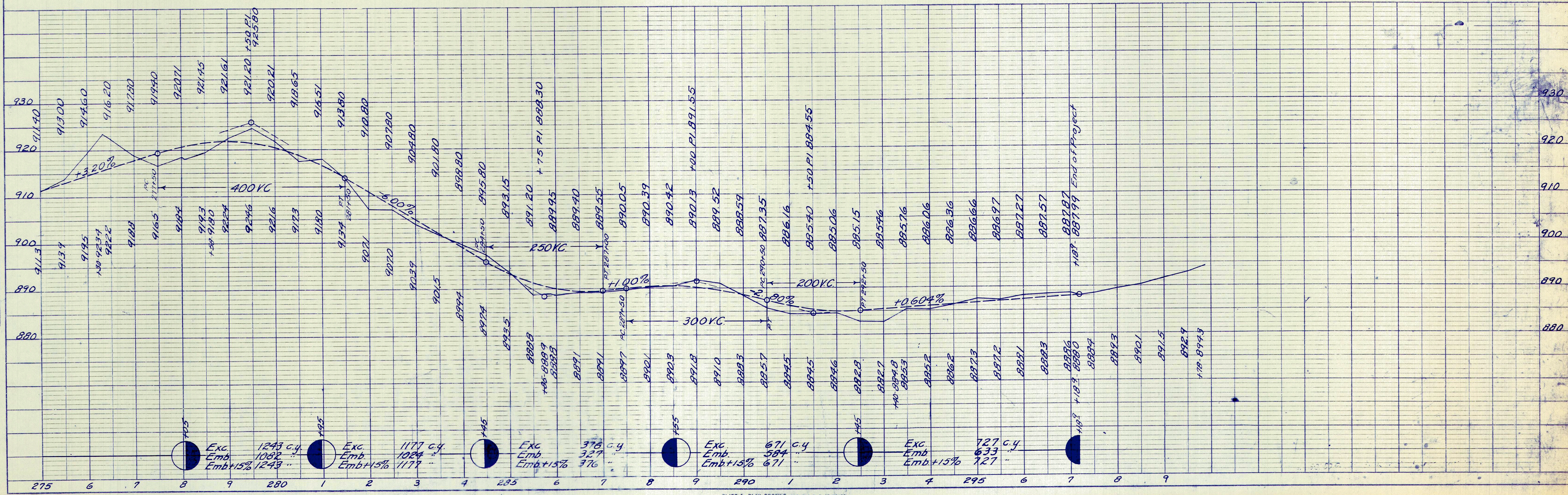
S.H.(I.C.H.)23 SEC. N
HOLMES COUNTY

12
73

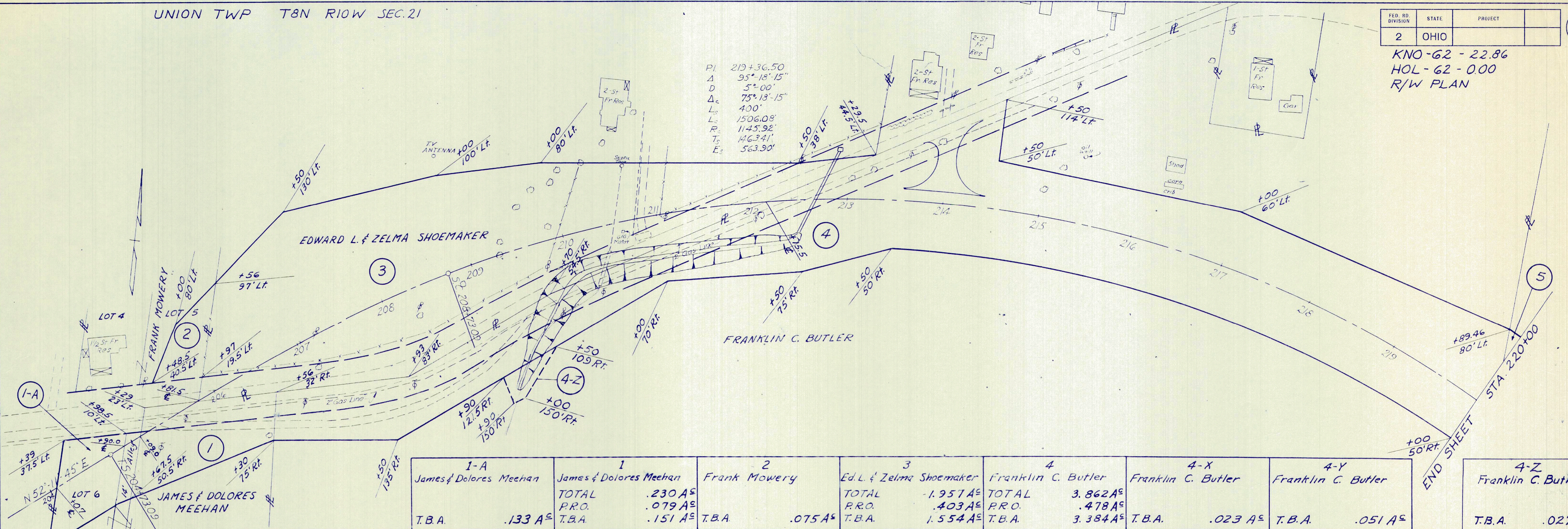
PLAN
CHECKED
DATE
BY
NO. 1016
NO. 1016
NO. 1016
NO. 1016



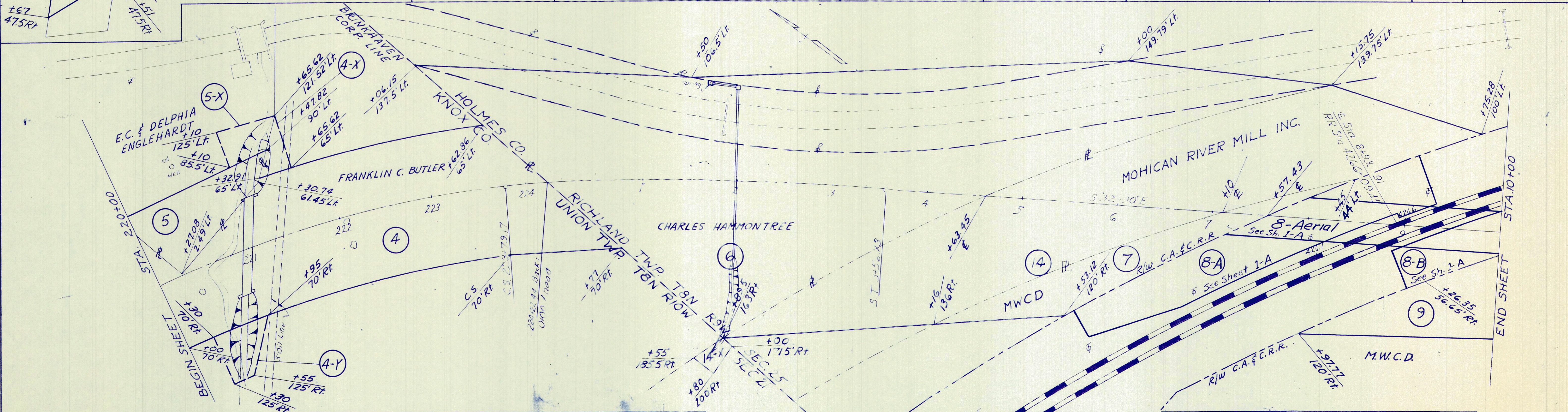
PROFILE
CHECKED
DATE
BY
NO. 1016
NO. 1016
NO. 1016
NO. 1016



KNO-62-22.86
 HOL-62-0.00
 R/W PLAN

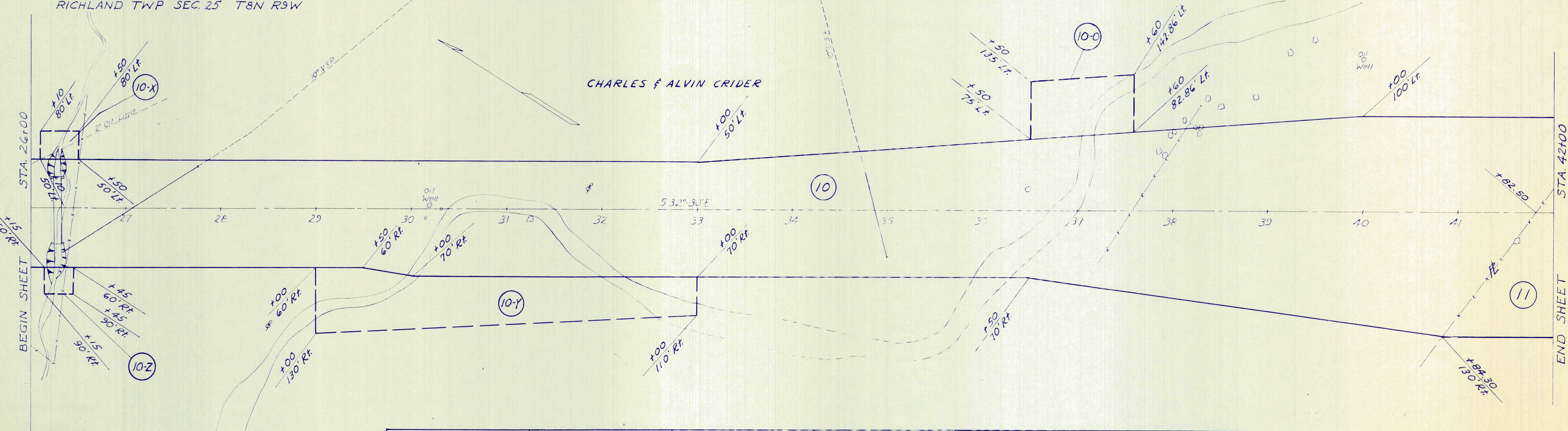
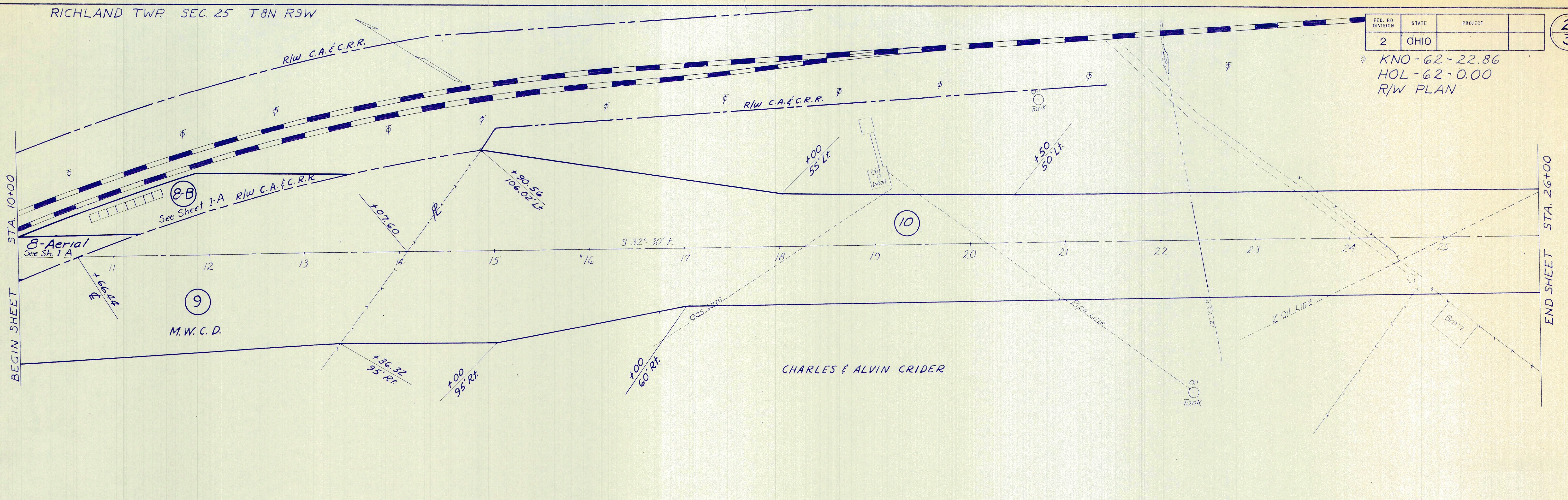


1-A	1	2	3	4	4-X	4-Y	4-Z
James & Dolores Meehan	James & Dolores Meehan	Frank Mowery	Ed. L. & Zelma Shoemaker	Franklin C. Butler	Franklin C. Butler	Franklin C. Butler	Franklin C. Butler
TOTAL	TOTAL	TOTAL	TOTAL	TOTAL	TOTAL	TOTAL	TOTAL
P.R.O.	P.R.O.	P.R.O.	P.R.O.	P.R.O.	P.R.O.	P.R.O.	P.R.O.
T.B.A.	T.B.A.	T.B.A.	T.B.A.	T.B.A.	T.B.A.	T.B.A.	T.B.A.
.133 A ^c	.230 A ^c .079 A ^c .151 A ^c	.075 A ^c	1.957 A ^c .403 A ^c 1.554 A ^c	3.862 A ^c .478 A ^c 3.384 A ^c	.023 A ^c	.051 A ^c	.027 A ^c



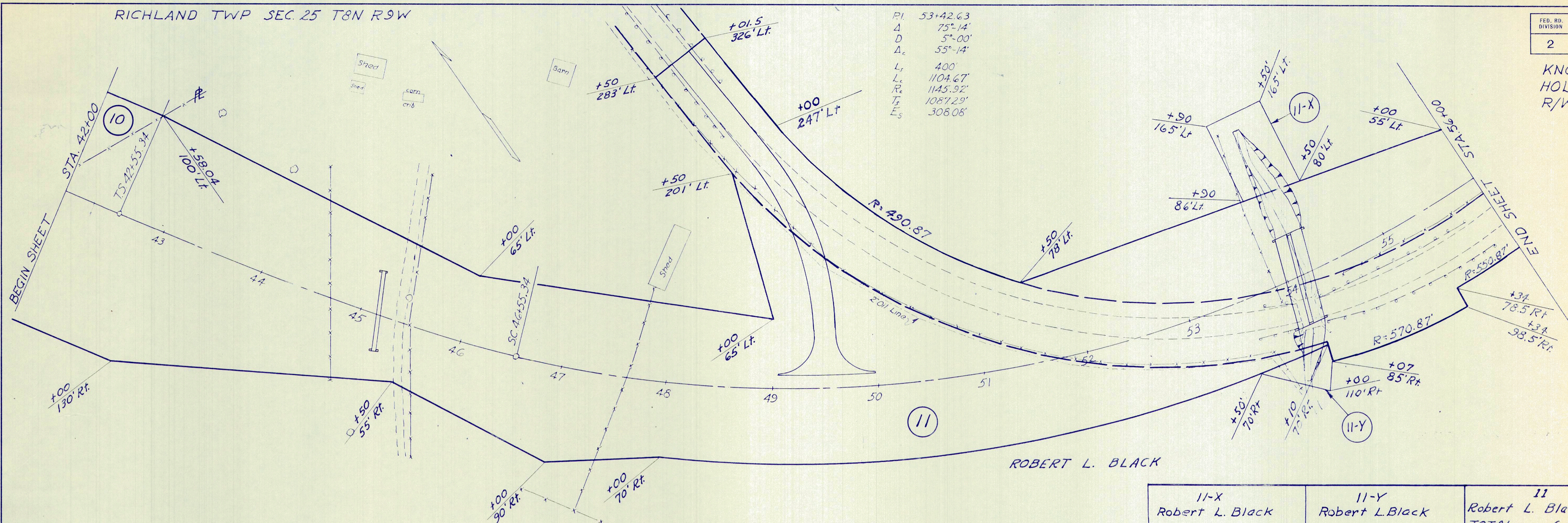
5-X	5	6	7	14-X	14
E.C. & Delphia Englehardt	E.C. & Delphia Englehardt	Charles Hammontree	M.W.C.D.	MOHICAN RIVER MILL INC.	MOHICAN RIVER MILL INC.
TOTAL	TOTAL	TOTAL	TOTAL	TOTAL	TOTAL
P.R.O.	P.R.O.	P.R.O.	P.R.O.	P.R.O.	P.R.O.
T.B.A.	T.B.A.	T.B.A.	T.B.A.	T.B.A.	T.B.A.
.042 A ^c	.181 A ^c	2.850 A ^c 1.014 A ^c 1.836 A ^c	.266 A ^c	.016 A ^c	1.509 A ^c

KNO-62-22.86
HOL-62-0.00
R/W PLAN



9 M.W.C.D.	10 Charles & Alvin Crider	10-X Charles & Alvin Crider	10-Y Charles & Alvin Crider	10-Z Charles & Alvin Crider	10-O Charles & Alvin Crider
T.B.A.	1.562 A ^c	T.B.A.	8.739 A ^c	T.B.A.	0.028 A ^c
			0.476 A ^c	T.B.A.	.021 A ^c
				T.B.A.	.152 A ^c

KNO-62-22.86
HOL-62-000
R/W PLAN



11-X Robert L. Black	11-Y Robert L. Black	11 Robert L. Black	12 Cloyd & Hazel Devore
T.B.A.	T.B.A.	TOTAL 6.059 A [±]	TOTAL 1.900 A [±]
.108 A ^c	.033 A ^c	P.R.O. 1.328 A [±]	P.R.O. .746 A [±]
		T.B.A. 4.731 A [±]	T.B.A. 1.154 A [±]
		12-X Cloyd & Hazel Devore	13 Willis & Helen Robinson
		TOTAL 1.041 A [±]	TOTAL .437 A [±]
		P.R.O. .044 A [±]	P.R.O. .052 A [±]
		T.B.A. .052 A [±]	T.B.A. .604 A [±]

