

FED.AID DIST. NO.	STATE	FED.AID PROJECT	LEGAL YEAR
10	OHIO		1927

73

SH. (I.C.H.) 23 SEC. N
HOLMES COUNTY

STATE OF OHIO
DEPARTMENT OF HIGHWAYS

COLUMBUS MILLERSBURG ROAD

I.C.H. NO. 23 SEC. N PET. NO. 6047

HOLMES COUNTY

RICHLAND TOWNSHIP DEC. 1927

The Standard Specifications of the State of Ohio, Department of Highways in force on date of contract will govern this improvement.

I hereby approve these plans and declare that the making of this improvement will require the closing to traffic of the highway and that detours will be provided as shown on the plan and estimates

Approved: Karl Snyder
Date, 4/19/28 Resident District Deputy Director

Approved: Walter G. Smith
Date, 4-14-28 Resident Division Deputy Director

Approved: Robt. S. Beighten
Date, 4/26/28 Chief Engineer
Bureau of Construction

Approved: _____
Date, _____ Chief Engineer
Bureau of Maintenance

Approved: J. Purkey
Date, 4/8/28 Chief Engineer
Bureau of Bridges

Approved: Harry J. Kirk
Date, 4-26-28 Chief Engineer

Approved: G. F. Schlesinger
Date, 4-26-28 Director of Highways

Recommended for Approval: _____
Date, _____ District Engineer
Bureau of Public Roads

Recommended for Approval: _____
Date, _____ Chief Engineer
Bureau of Public Roads

Approved: _____
Date, _____ Chief of Bureau

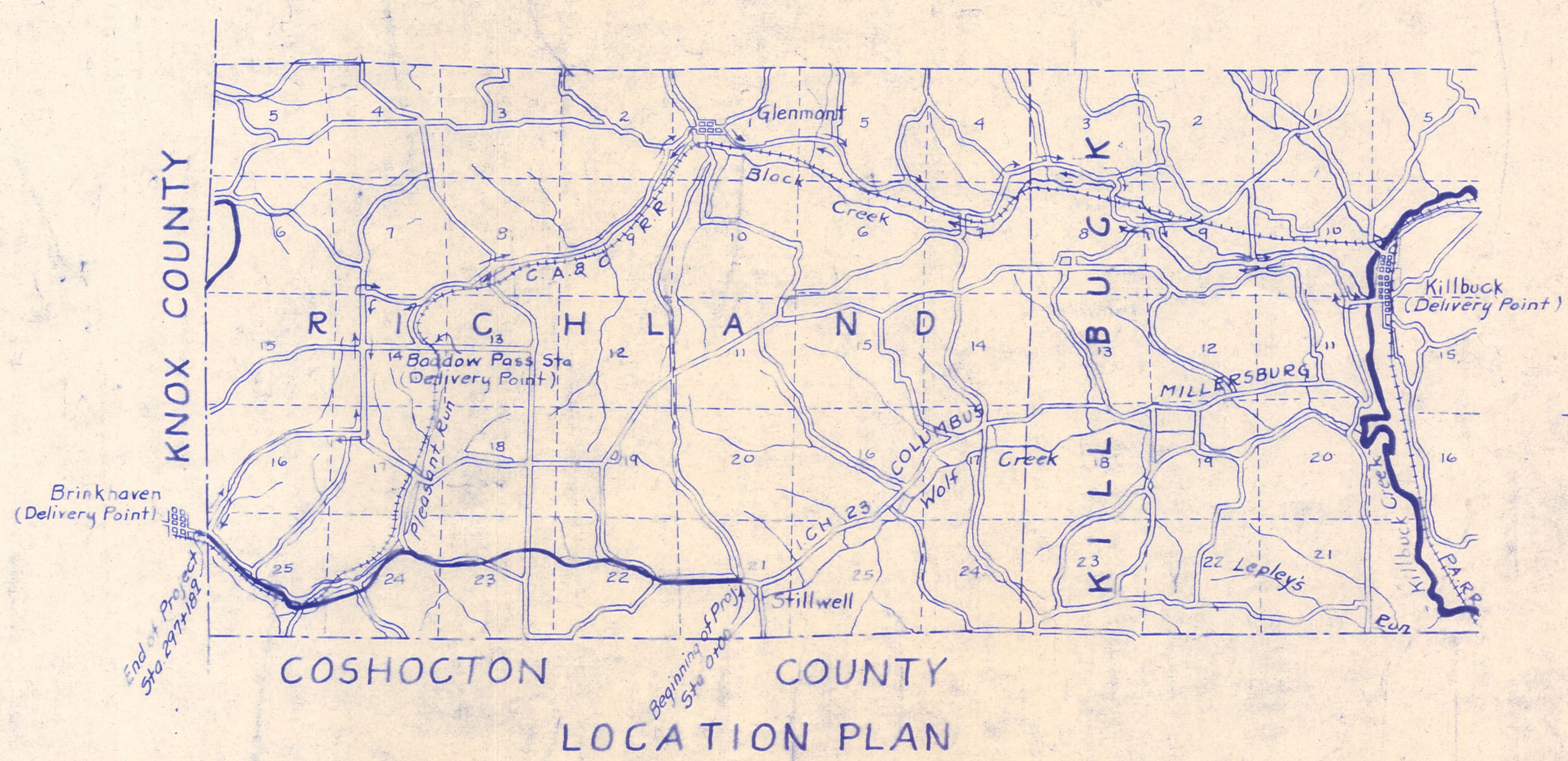
CONVENTIONAL SIGNS

State Line	—————
County Line	-----
Township Line	- - - - -
Section Line	· · · · ·
Property Line not fenced	———○———
Center Line	———○———
City or Village Line	———○———
Fence	——— ———
Telephone or Telegraph	———T———
Steam Railroad	——— ———
Electric Line	——— ———
Guard Rail	——— ———
Drain Pipe - new	——— ———
Drain Pipe - old	——— ———

We, the Commissioners of Holmes County, hereby approve these plans and certify that the right-of-way 60 feet wide is available for the construction maintenance and repair of the above highway.

J. A. Mullet
H. H. Wilson
G. W. Hanna

Date, _____ County Commissioners



PORTION TO BE IMPROVED	—————
DETOURS SHOWN THUS	——— ———
IMPROVED ROADS	——— ———

SCALES

Plan	1" = 100'
Profile (Vertical)	1" = 10'
Profile (Horizontal)	1" = 100'
Cross Sections	1" = 5'

INDEX

Title Page	1
Typical Cross Section	2
Plans and Profile	3-12
Cross Sections	13-51
Structural Plans	52-67
Curve Tables	68-71
Summary Sheets	72-73

Supplemental Prints of Structural Standards
Drawings No. 300, 301, 106, 344, 58, 2430

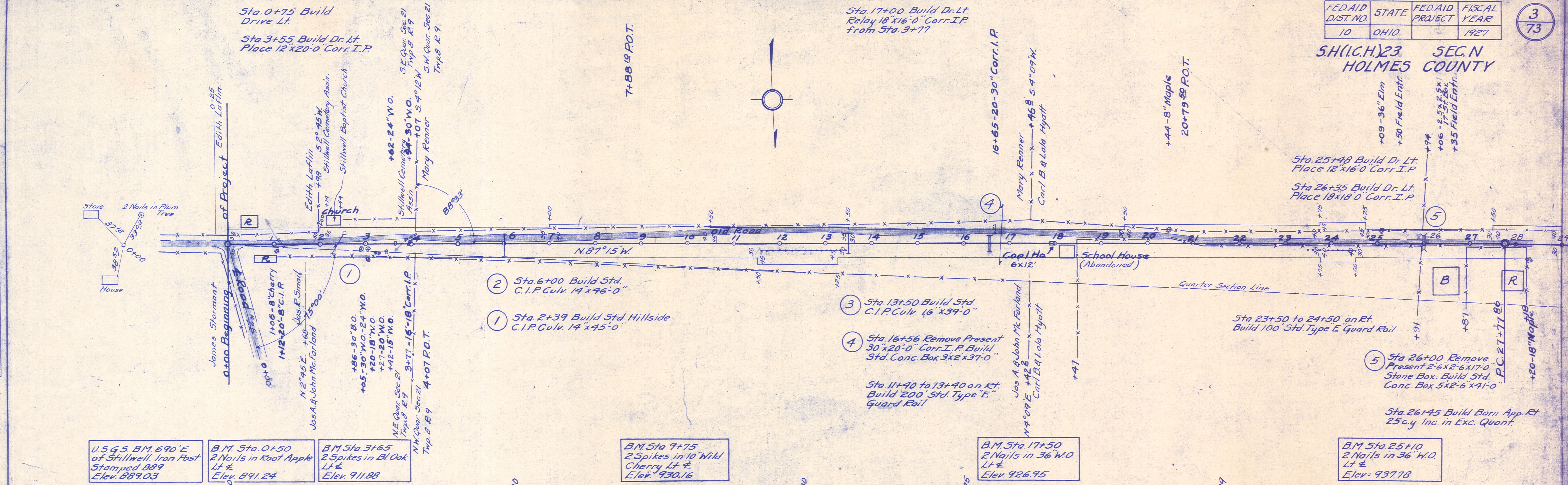
FED.AID DIST NO.	STATE	FED.AID PROJECT	FISCAL YEAR
10	OHIO		1927

3
73

S.H.(C.H.) 23 SEC. N
HOLMES COUNTY

PLAN	DATE
SURVEYED	
PLOTTED	
NOTED	
CHECKED	
NO. OF WAY CHECKED	

PROFILE	DATE
SURVEYED	
PLOTTED	
NOTED	
CHECKED	
NO. OF WAY CHECKED	



U.S.G.S. B.M. 690 E.
of Stillwell, Iron Post
Stamped 889
Elev. 889.03

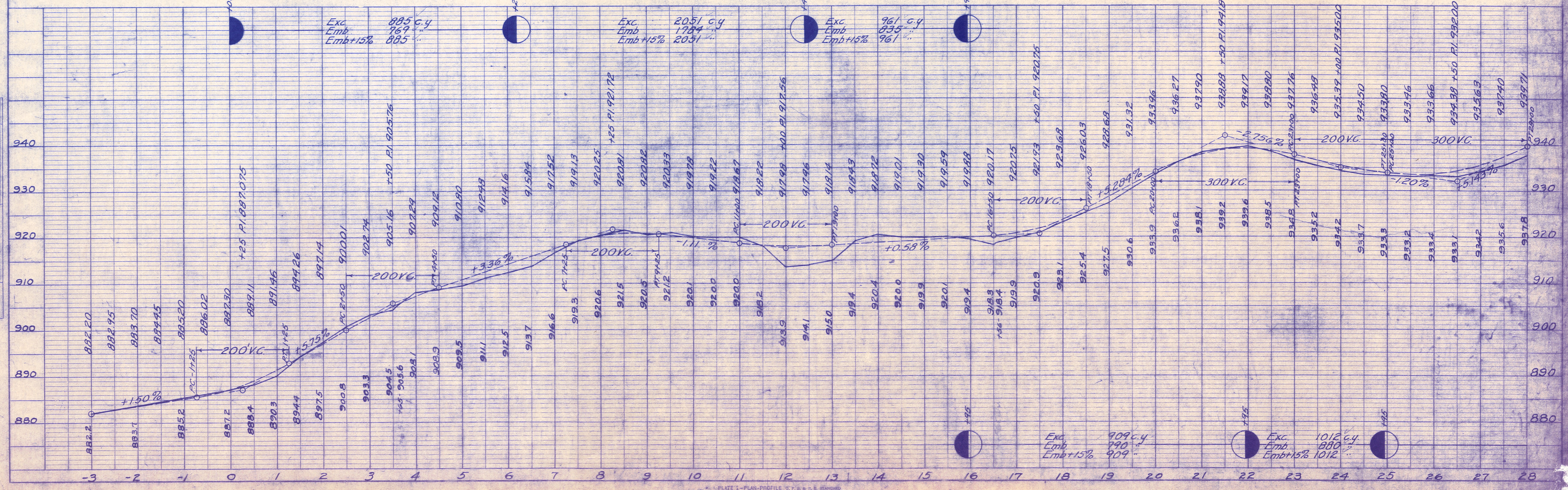
B.M. Sta. 0+50
2 Nails in Root Apple
Lt. #
Elev. 891.24

B.M. Sta. 3+65
2 Spikes in Bl. Oak
Lt. #
Elev. 911.88

B.M. Sta. 9+75
2 Spikes in 10' Wild
Cherry Lt. #
Elev. 930.16

B.M. Sta. 17+50
2 Nails in 36' W.O.
Lt. #
Elev. 926.95

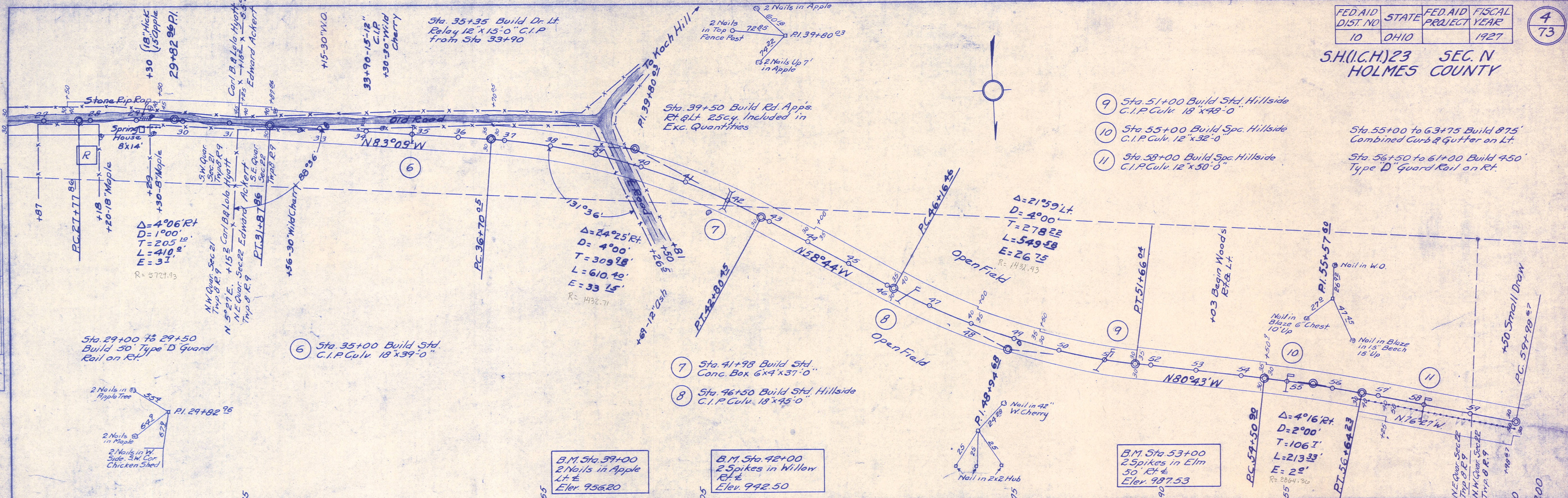
B.M. Sta. 25+10
2 Nails in 36' W.O.
Lt. #
Elev. 937.78



S.H.(I.C.H.)23 SEC. N
HOLMES COUNTY

PLAN
BY DATE
NO. 7
NOTE BOOK
PLOTTED
ALIGNMENT CHECKED
RT. OF WAY CHECKED

PROFILE
BY DATE
NO. 7
NOTE BOOK
GRODES CHECKED
B.M. NOTED
STRUCTURE NOTATIONS CHKD.



- 9 Sta 51+00 Build Std. Hillside C.I.P. Culv. 18"x48'-0"
 - 10 Sta 55+00 Build Spc. Hillside C.I.P. Culv. 12"x32'-0"
 - 11 Sta 58+00 Build Spc. Hillside C.I.P. Culv. 12"x50'-0"
- Sta. 55+00 to 63+75 Build 875' Combined Curb & Gutter on Lt.
Sta. 56+50 to 61+00 Build 450' Type D Guard Rail on Rt.

- 7 Sta 41+98 Build Std. Conc. Box 6x4x37'-0"
- 8 Sta 46+50 Build Std. Hillside C.I.P. Culv. 18"x45'-0"

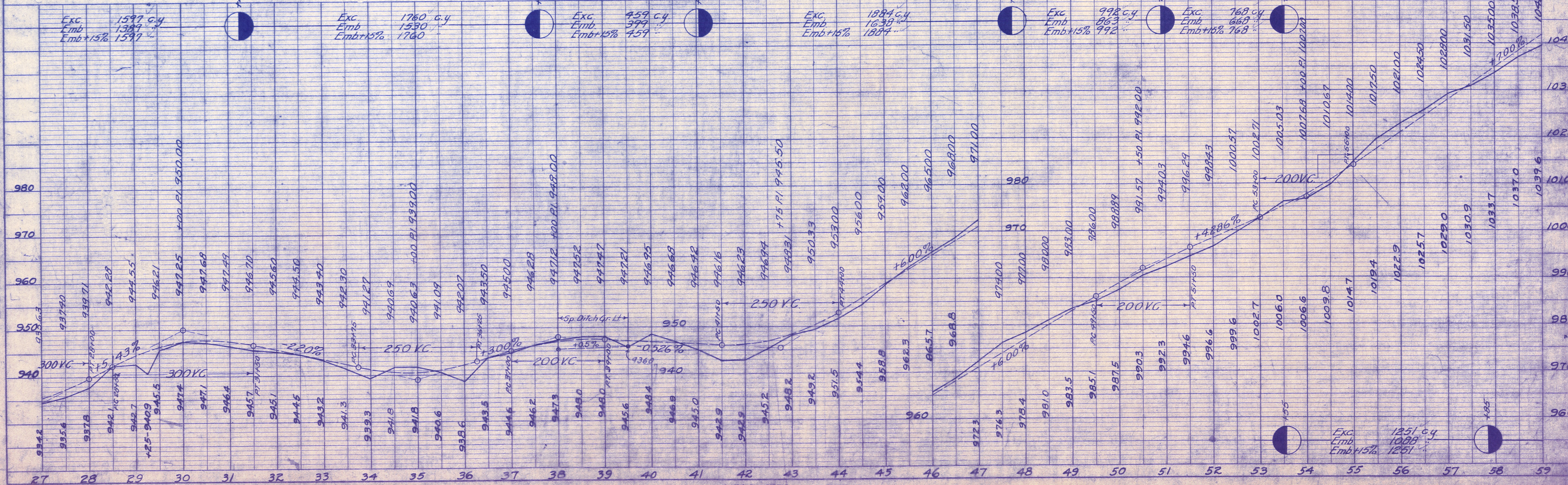
6 Sta 35+00 Build Std. C.I.P. Culv. 18"x39'-0"

Sta 29+00 to 29+50 Build 50' Type D Guard Rail on Rt.

B.M. Sta 39+00
2 Nails in Apple Lt. & Elev. 956.20

B.M. Sta 42+00
2 Spikes in Willow Rt. & Elev. 942.50

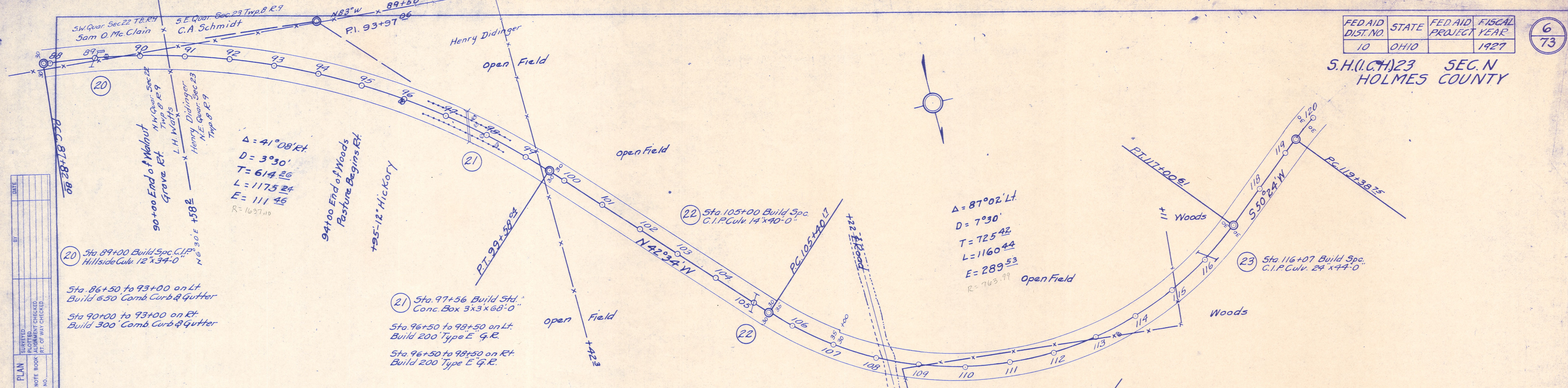
B.M. Sta 53+00
2 Spikes in Elm 50' Rt. & Elev. 997.53



FED. AID DIST. NO.	STATE	FED. AID PROJECT	FISCAL YEAR
10	OHIO		1927

6
73

S.H.(I.C.H.)23 SEC. N
HOLMES COUNTY



PLAN	SURVEYED	DATE
	BY	
	NO.	

20 Sta. 89+00 Build Spc. C.I.P. Hillside Culv. 12'x34'-0"

Sta. 86+50 to 93+00 on Lt. Build 6.50 Comb. Curb & Gutter

Sta. 90+00 to 93+00 on Rt. Build 300' Comb. Curb & Gutter

21 Sta. 97+56 Build Std. Conc. Box 3x3x68'-0"

Sta. 96+50 to 98+50 on Lt. Build 200' Type E' G.R.

Sta. 96+50 to 98+50 on Rt. Build 200' Type E' G.R.

22 Sta. 105+00 Build Spc. C.I.P. Culv. 14'x40'-0"

23 Sta. 116+07 Build Spc. C.I.P. Culv. 24'x44'-0"

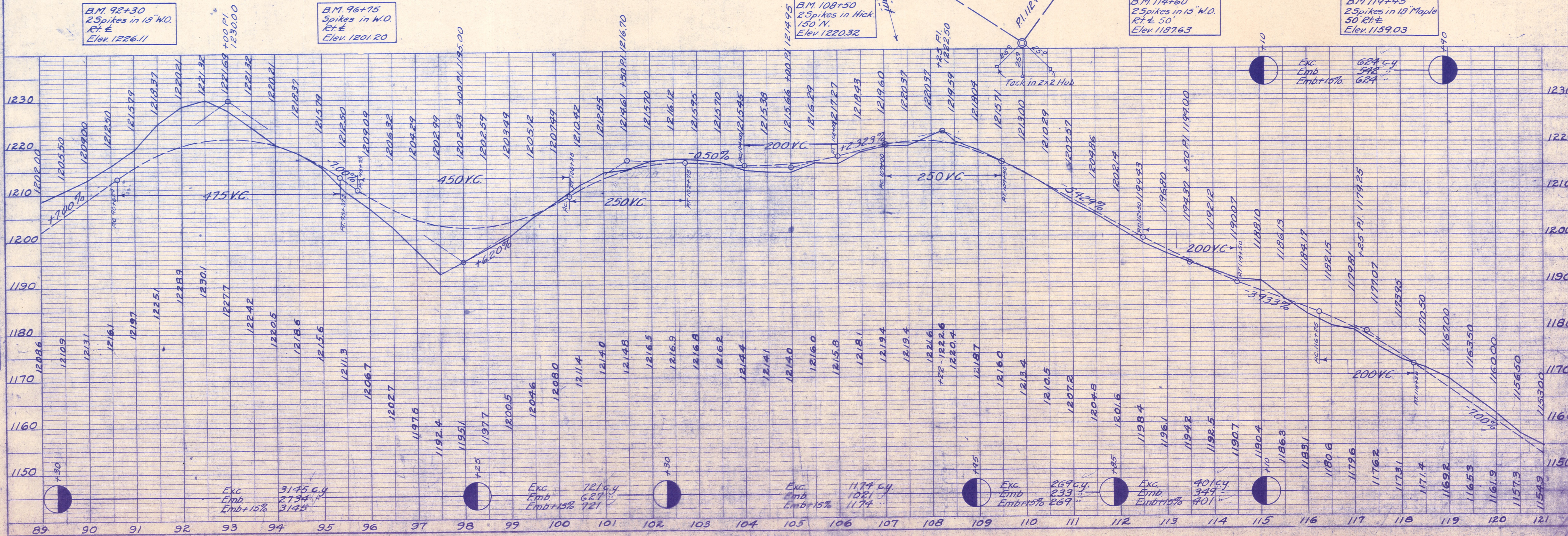
B.M. 92+30
25 Spikes in 18" W.O.
Rt. E
Elev. 1226.11

B.M. 96+75
Spikes in W.O.
Rt. E
Elev. 1201.20

B.M. 108+50
25 Spikes in Hick.
150" N.
Elev. 1220.32

B.M. 114+60
25 Spikes in 15" W.O.
Rt. E 50
Elev. 1187.63

B.M. 119+45
25 Spikes in 18" Maple
50 Rt. E
Elev. 1159.03



PROFILE	SURVEYED	DATE
	BY	
	NO.	

Exc. Emb. Emb+15%
3145 C.Y.
2734
3145

Exc. Emb. Emb+15%
721 C.Y.
627
721

Exc. Emb. Emb+15%
1174 C.Y.
1021
1174

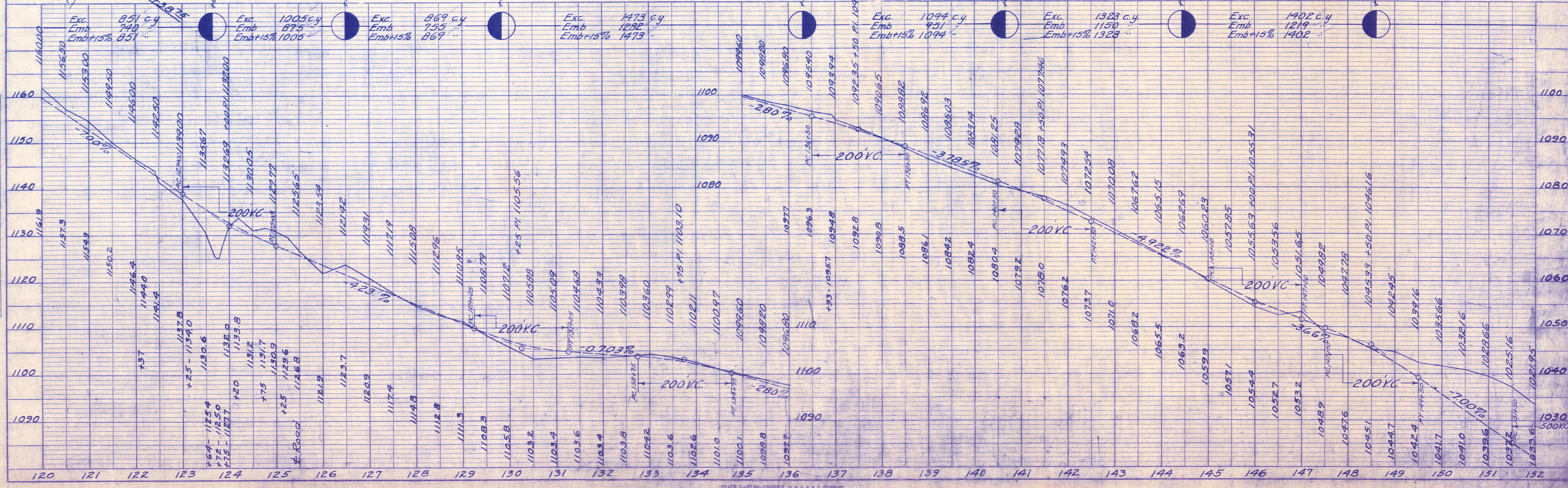
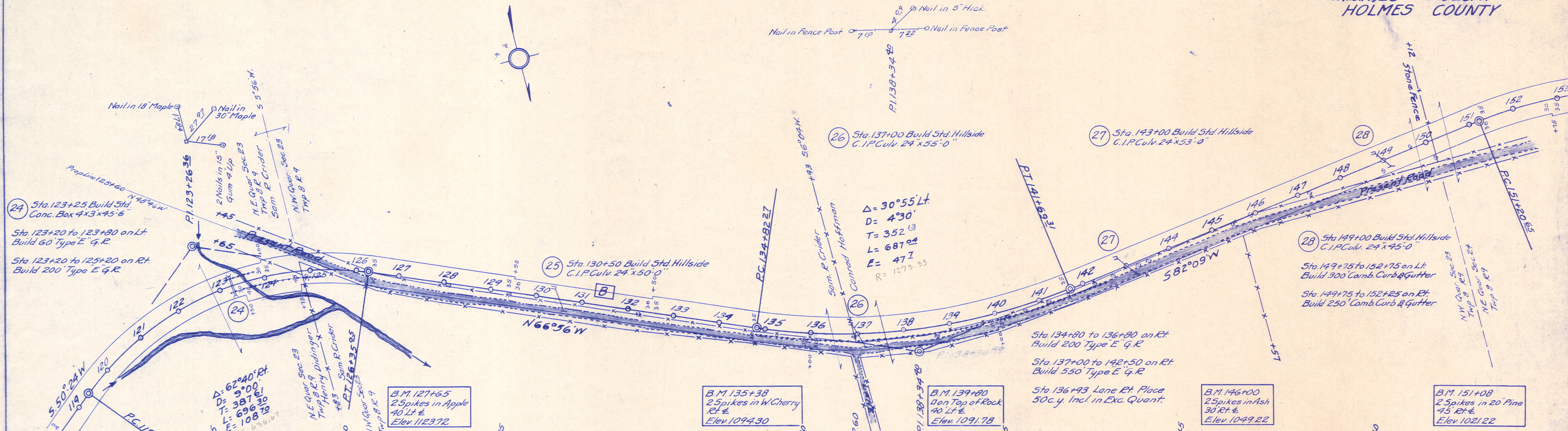
Exc. Emb. Emb+15%
269 C.Y.
233
269

Exc. Emb. Emb+15%
401 C.Y.
349
401

S.H.(I.C.H.) 23 SEC. N
HOLMES COUNTY

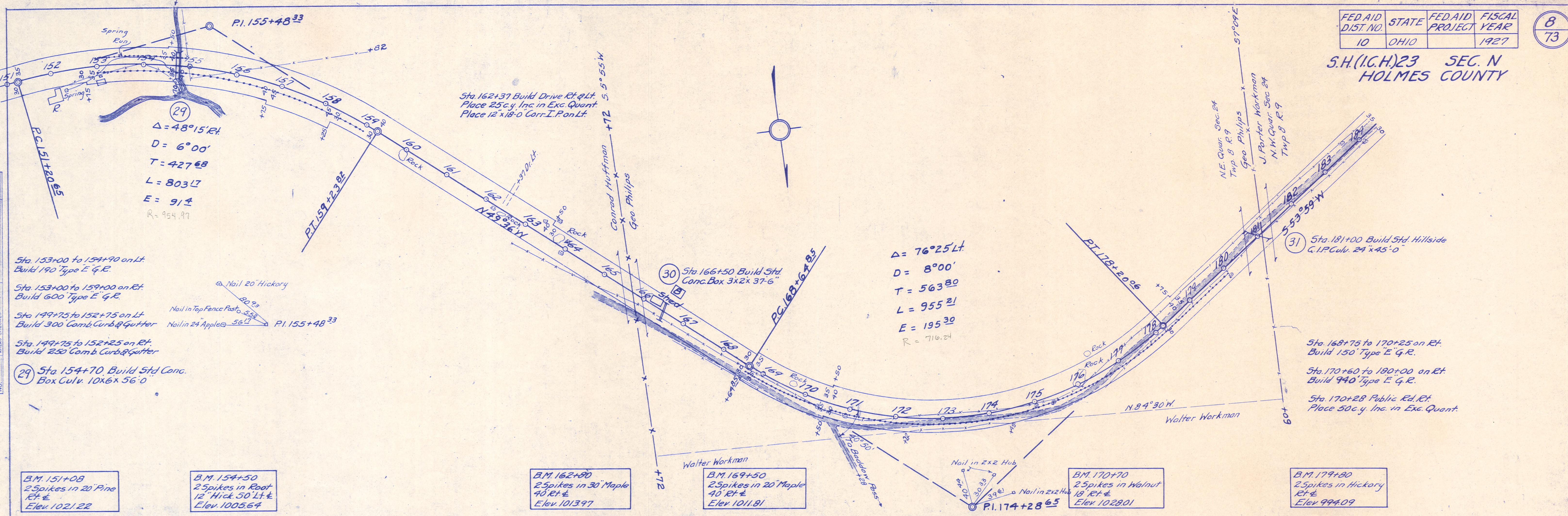
PLAN
SURVEYED BY
DATE
NOTE BOOK ALIGNED CHECKED
NO. OF WY CHECKED

PROFILE
SURVEYED BY
DATE
NOTE BOOK GRADES CHECKED
B.M. NOTED
NO. OF STRUCTURE NOTATIONS CHECKED



S.H.(I.C.H.)23 SEC. N
HOLMES COUNTY

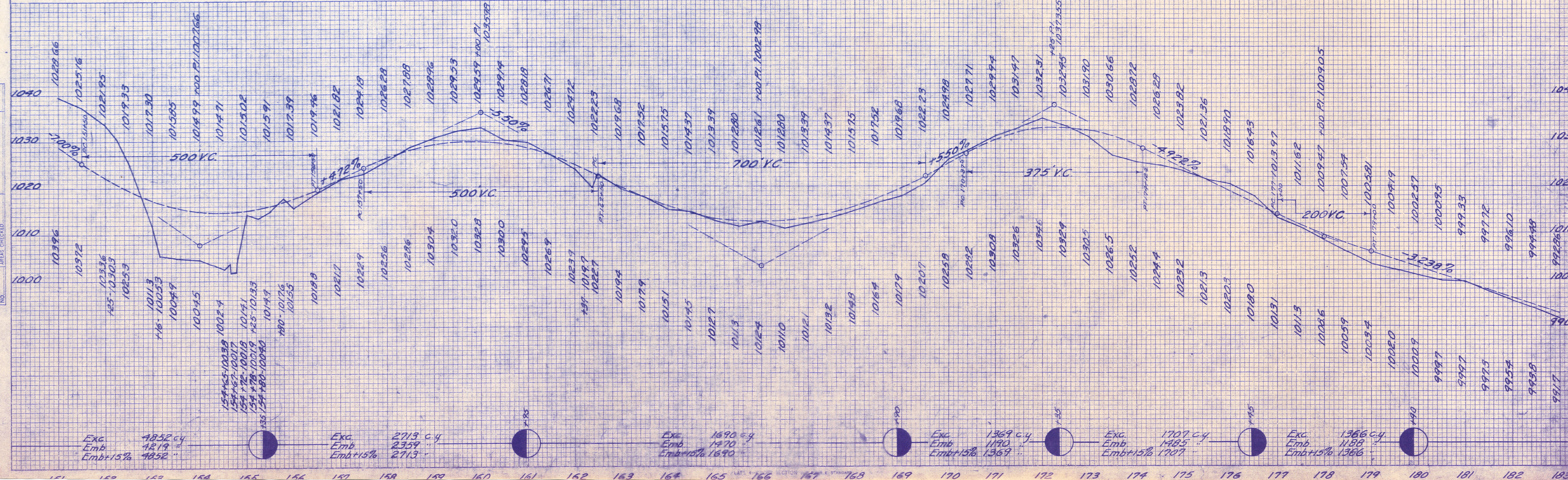
DATE _____ BY _____
 SURVEY PLOTTED _____
 FINAL SURVEY PLOTTED _____
 NOTE BOOK TEMPLATE _____
 NO. _____ AREAS CHECKED _____



- Sta. 153+00 to 154+70 on Lt. Build 190 Type E' G.R.
- Sta. 153+00 to 159+00 on Rt. Build 600 Type E' G.R.
- Sta. 149+75 to 152+75 on Lt. Build 300 Comb. Curb & Gutter
- Sta. 149+75 to 152+25 on Rt. Build 250 Comb. Curb & Gutter
- 29 Sta. 154+70 Build Std. Conc. Box Culv. 10x6x56'-0"

- B.M. 151+08 25 spikes in 20' Pine Rt. & Elev. 1021.22
- B.M. 154+50 25 spikes in Root 12' Hick 50 Lt. & Elev. 1005.64
- B.M. 162+80 25 spikes in 30' Maple 40' Rt. & Elev. 1013.97
- B.M. 169+50 25 spikes in 20' Maple 40' Rt. & Elev. 1011.81
- B.M. 170+70 25 spikes in Walnut 18' Rt. & Elev. 1028.01
- B.M. 179+80 25 spikes in Hickory Rt. & Elev. 994.09

DATE _____ BY _____
 ORIGINAL SURVEY PLOTTED _____
 NOTE BOOK AREAS CHECKED _____

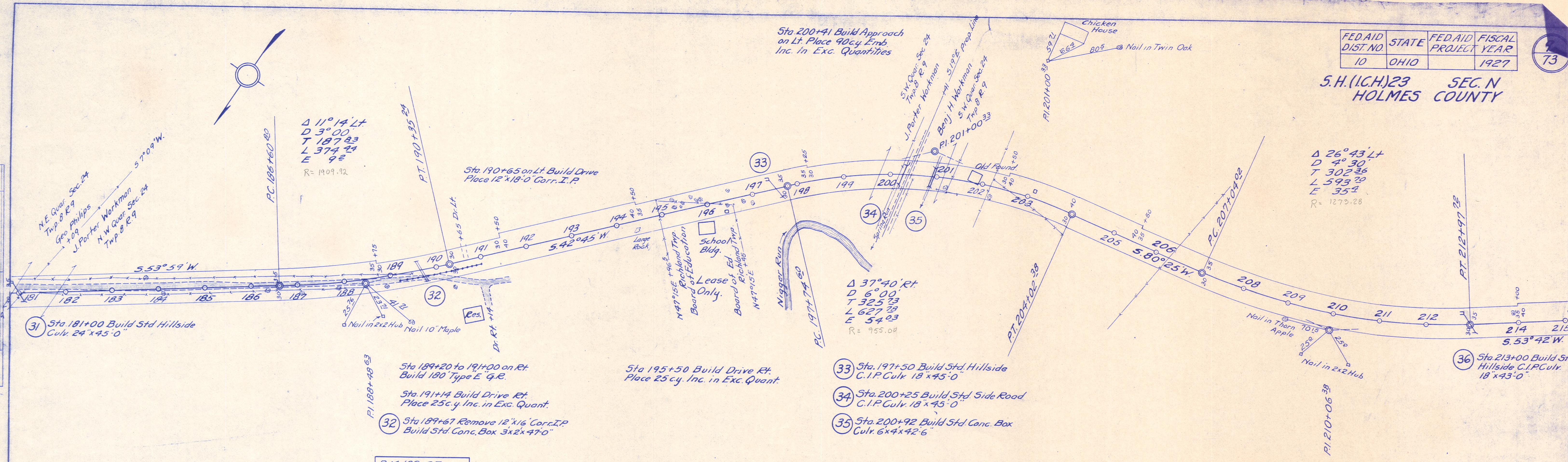


FED. AID DIST. NO.	STATE	FED. AID PROJECT NO.	FISCAL YEAR
10	OHIO		1927

S.H. (I.C.H.) 23 SEC. N
HOLMES COUNTY

CHECKED	DATE
BY	
PLAN	
NO.	

CHECKED	DATE
BY	
PROFILE	
NO.	



Sta 189+67 Remove 12"x16" Cor. I.P.
Build Std. Conc. Box 3x2x47'-0"

Sta 195+50 Build Drive Rt.
Place 25c.y. Inc. in Exc. Quant.

Sta. 197+50 Build Std. Hillside
C.I.P. Culv. 18'x45'-0"

Sta. 200+25 Build Std. Side Road
C.I.P. Culv. 18'x45'-0"

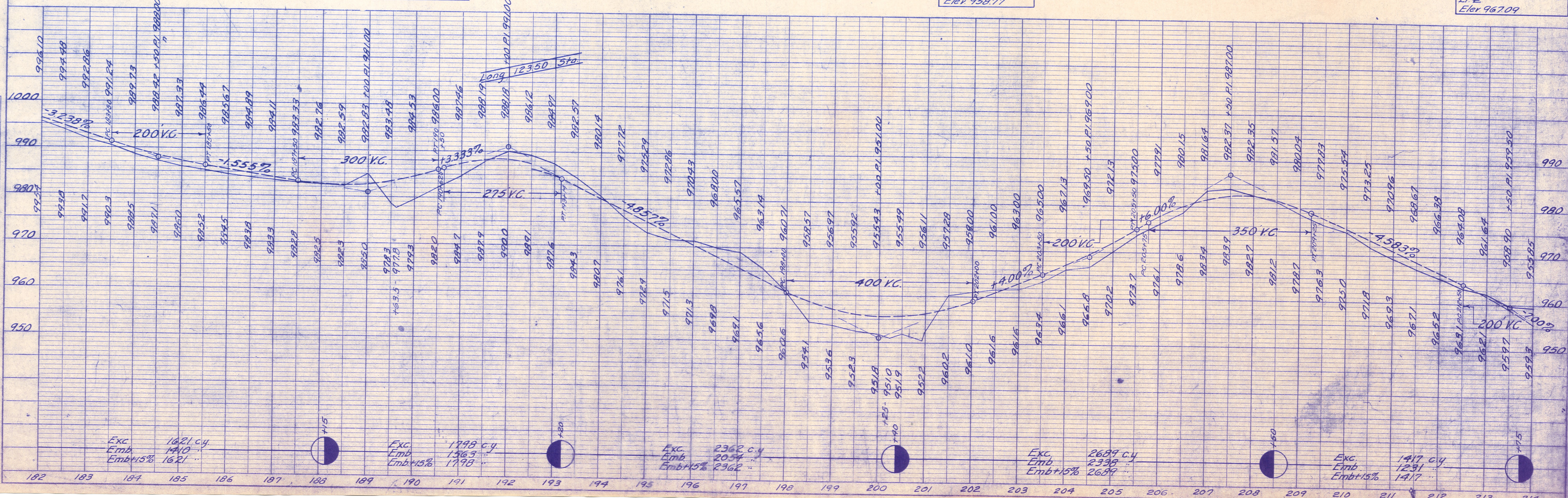
Sta. 200+92 Build Std. Conc. Box
Culv. 6'x4'x42'-6"

Sta 213+00 Build Std
Hillside C.I.P. Culv.
18'x43'-0"

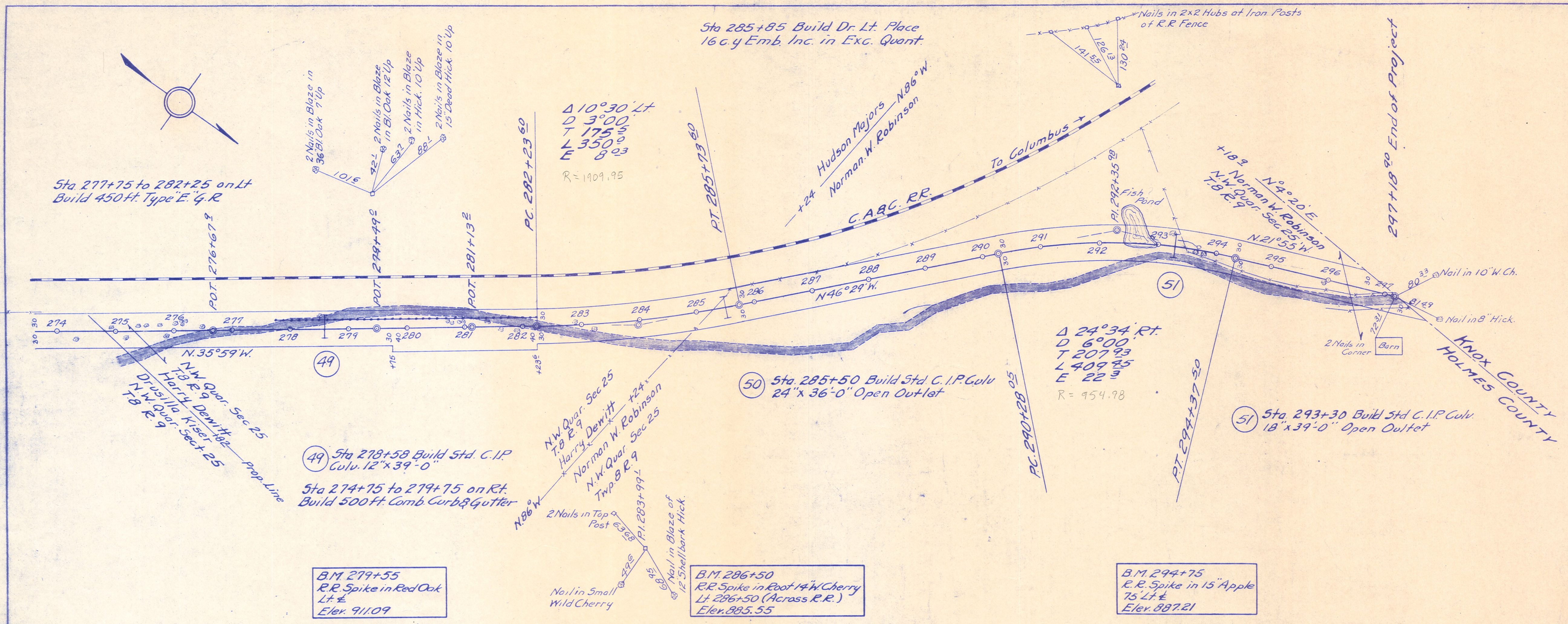
B.M. 189+75
25 spikes in 42" W.O.
Rt. #
Elev. 979.49

B.M. 202+00
25 spikes in Twin Oak
75 Lt #
Elev. 958.77

B.M. 214+05
Spikes in 18" Wild Cherry
Lt #
Elev. 967.09



PLAN
SURVEYED
CHECKED
NOTE BOOK
NO.



PROFILE
SURVEYED
CHECKED
NOTE BOOK
NO.

