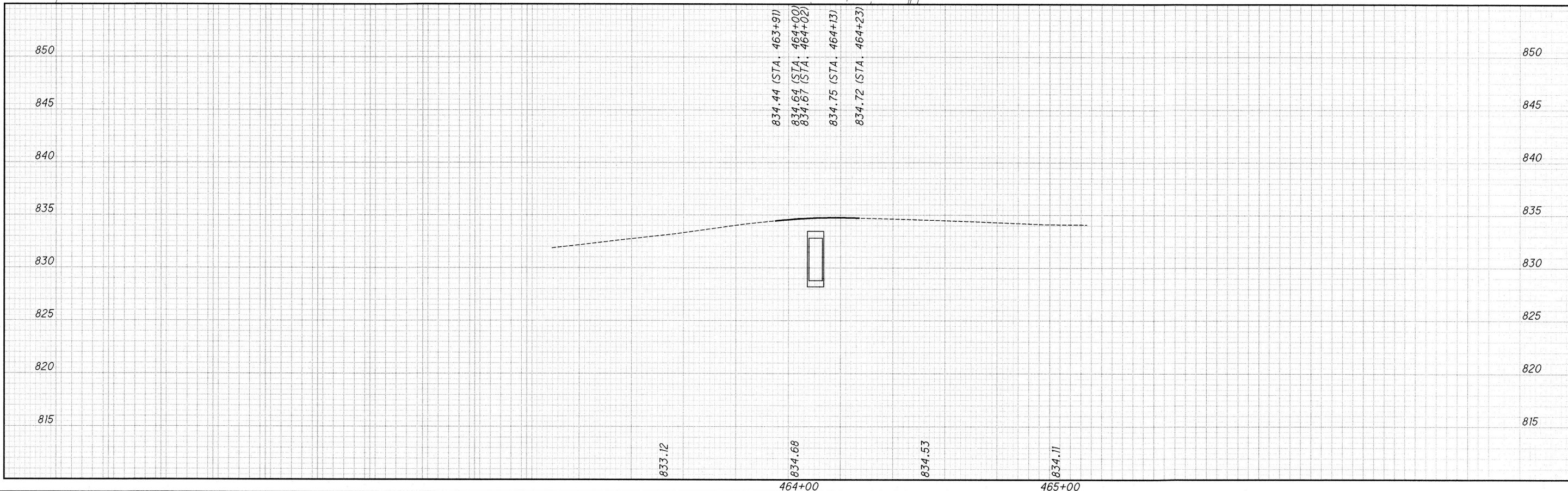


HOL-62-8.79 PAVEMENT TRANSITION TABLE

LEFT SIDE				CENTERLINE		RIGHT SIDE			
EDGE ELEV	ELEV CORR	CROSS SLOPE	WIDTH	STATION	PROFILE GRADE	WIDTH	CROSS SLOPE	ELEV CORR	EDGE ELEV
834.38	-0.060	-0.0048	12.48	463+91.00	834.44	12.27	-0.0277	-0.340	834.10
834.59	-0.051	-0.0041	12.44	464+00.00	834.64	12.16	-0.0280	-0.340	834.30
834.62	-0.050	-0.0040	12.44	464+02.00	834.67	12.13	-0.0280	-0.340	834.33
834.71	-0.040	-0.0032	12.39	464+13.00	834.75	12.00	-0.0283	-0.340	834.41
834.69	-0.030	-0.0024	12.35	464+23.00	834.72	11.87	-0.0286	-0.340	834.38

**ATTENTION**  
Contact the Ohio Department  
of Transportation for current  
Plans of Record



**U.S. 62 PLAN AND PROFILE**  
**STA. 462+00 TO 466+00**

**HOL-62-8.79**

I:\ProjectData\10575\Design\Roadway\Sheets\10575\_GPO01.dgn Sheet 5/21/2020 10:19:13 AM aslanina



I:\ProjectData\10575\Design\Roadway\Sheets\10575\_XS001.dgn Sheet 5/21/2020 10:19:14 AM aslanina

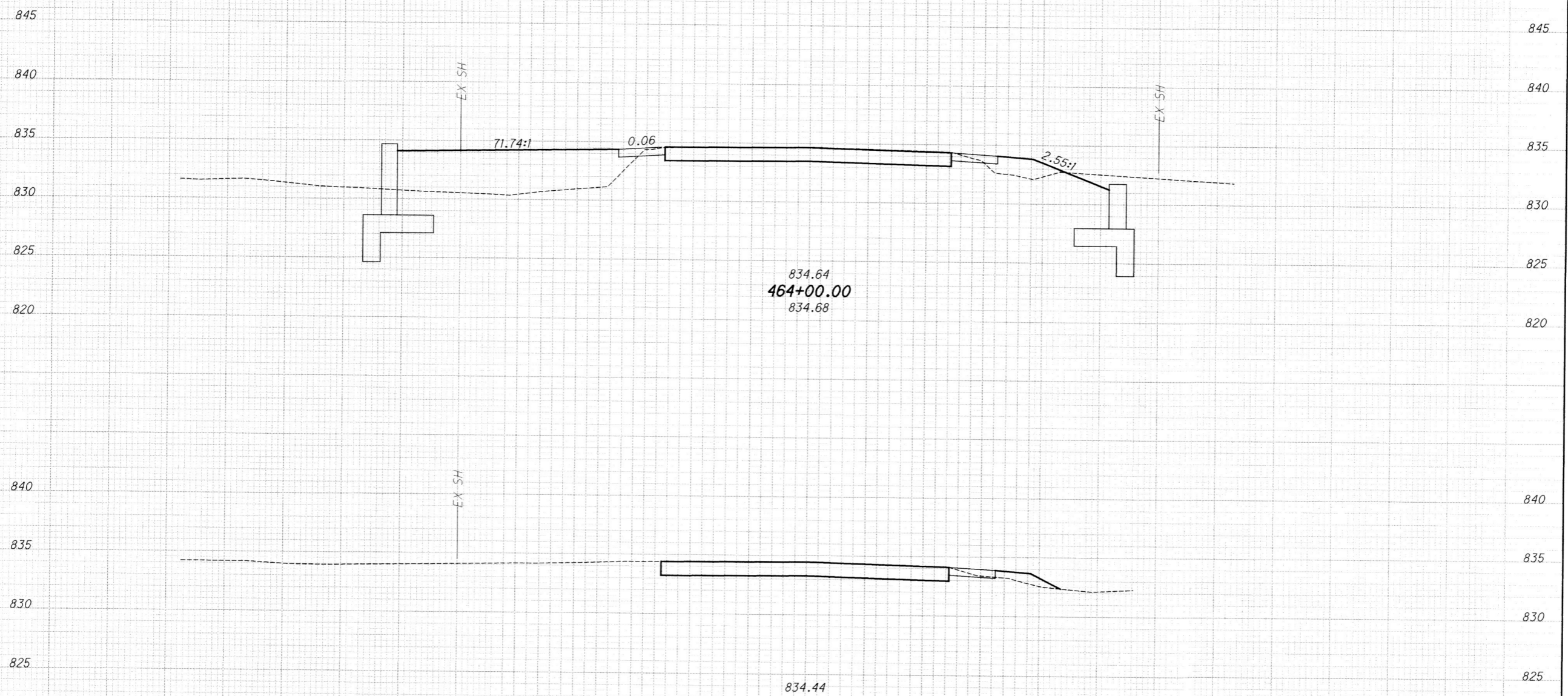
SEEDING  
END SO.  
WIDTH YDS.

60 50 40 30 20 10 0 10 20 30 40 50 60  
 U.S. 62

END AREA  
CUT FILL

VOLUME  
CUT FILL

CALCULATED  
DAB  
CHECKED  
ANS

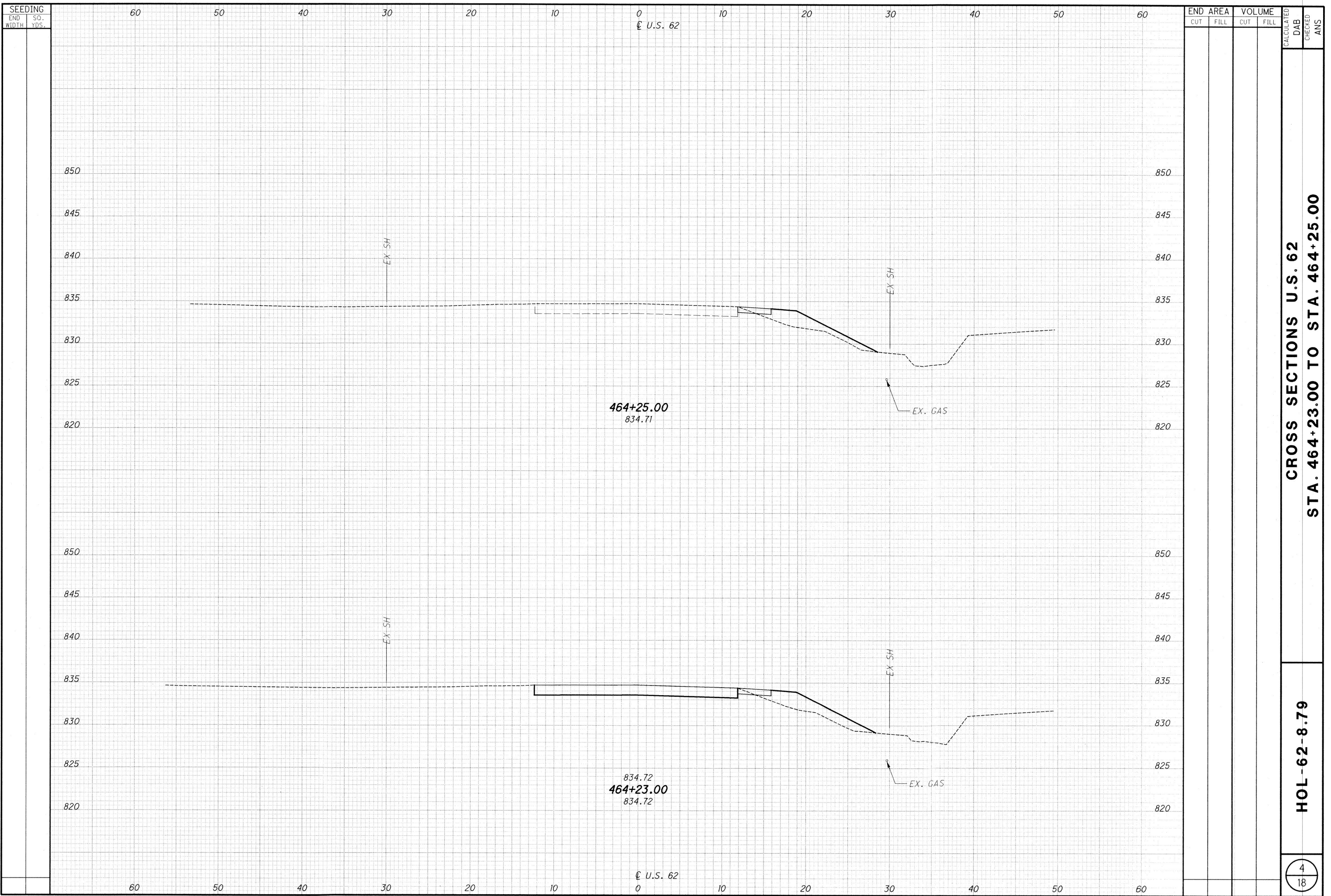


CROSS SECTIONS U.S. 62  
 STA. 463+91.00 TO STA. 464+00.00

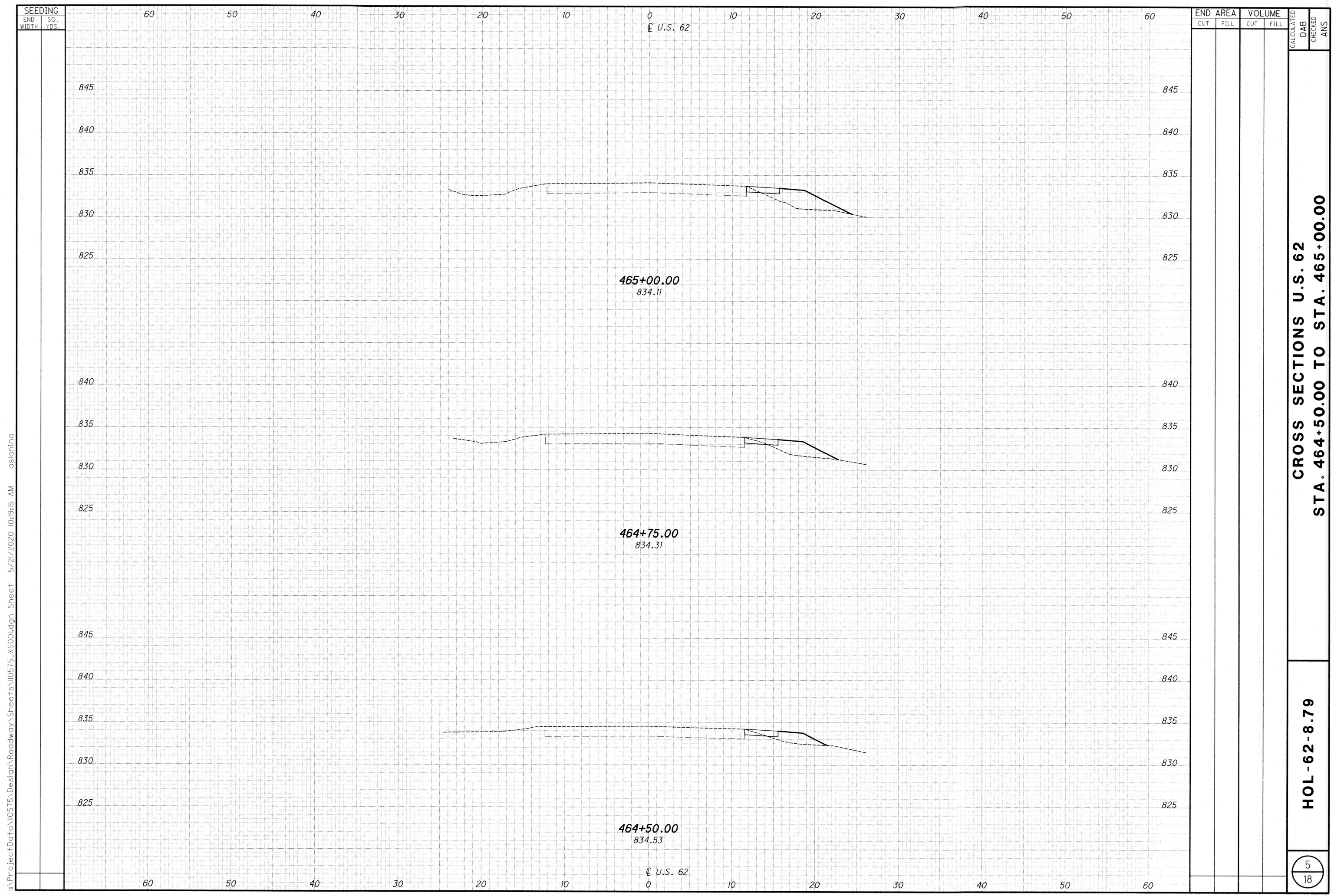
HOL-62-8.79

3  
18

I:\Project\Dat a\10575\Design\Roadway\Sheets\10575\_XS001.dgn Sheet 5/21/2020 10:19:15 AM aslaming

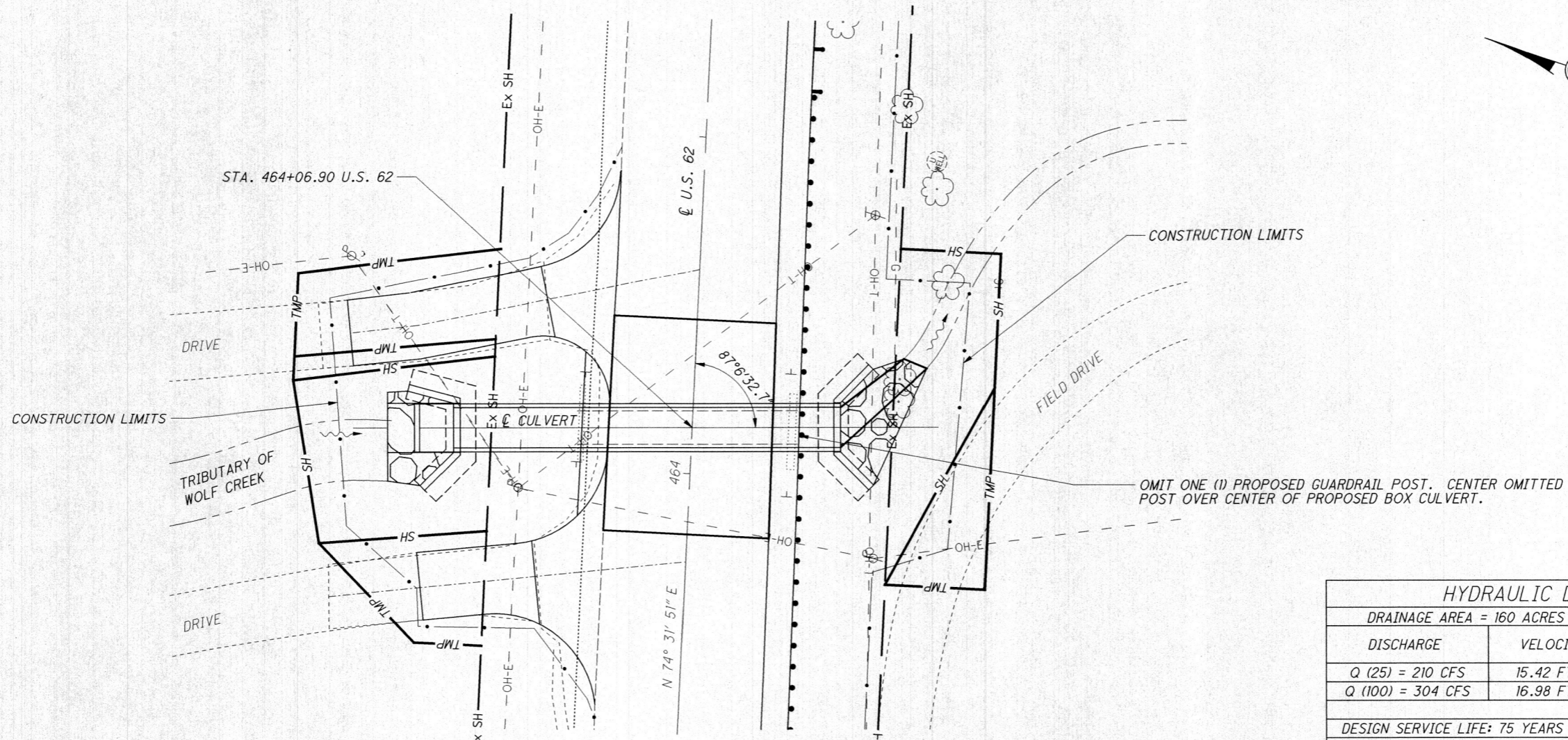


SEEDING		END AREA		VOLUME		CALCULATED	
END WIDTH	SO. YDS.	CUT	FILL	CUT	FILL	DAB	CHECKED
<b>CROSS SECTIONS U.S. 62</b> <b>STA. 464+23.00 TO STA. 464+25.00</b>							
<b>HOL-62-8.79</b>							
<span style="border: 1px solid black; border-radius: 50%; padding: 5px;">4 18</span>							



I:\ProjectData\110575\Design\Roadway\Sheets\110575\_XS00.dgn Sheet 5/21/2020 10:19:15 AM aslinda

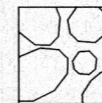
I:\ProjectData\110575\Design\Roadway\Sheets\110575\_DP001.dgn Sheet 5/21/2020 10:19:17 AM aslanting



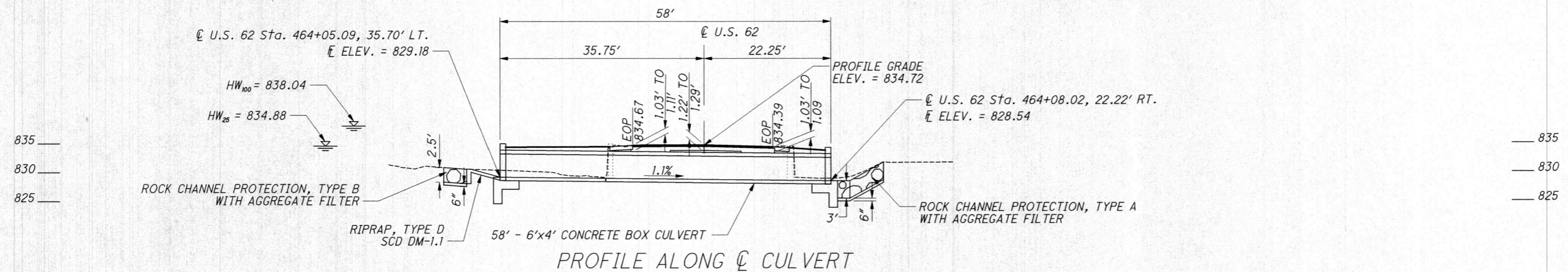
PLAN VIEW

HYDRAULIC DATA		
DRAINAGE AREA = 160 ACRES (0.25 SQ. MILES)		
DISCHARGE	VELOCITY	HEADWATER ELEVATION
Q (25) = 210 CFS	15.42 FT/S	834.88
Q (100) = 304 CFS	16.98 FT/S	838.04
DESIGN SERVICE LIFE: 75 YEARS		
pH: 6.7		
ABRASION LEVEL: 2		

PROPOSED STRUCTURE	EXISTING STRUCTURE
TYPE: 6'x4' CONCRETE BOX CULVERT SPAN LENGTH: 6.01' ALONG $\phi$ ROADWAY WIDTH: 24.6' EOP/EOP SKEW: 2° 53' 27.3" R.F. ALIGNMENT: TANGENT CROWN: VARIES WEARING SURFACE: ASPHALT CONCRETE PAVEMENT CULVERT FILE NUMBER: 1983263	TYPE: 6' X 4' CONCRETE BOX CULVERT SPAN LENGTH: 6.01' ALONG $\phi$ ROADWAY WIDTH: 24.6' EOP/EOP LOADING: UNKNOWN SKEW: 2° 53' 27.3" R.F. ALIGNMENT: TANGENT CROWN: VARIES WEARING SURFACE: ASPHALT CONCRETE PAVEMENT CULVERT FILE NUMBER: 1810532 DATE BUILT: UNKNOWN



(OUTLET) - ITEM 601 - ROCK CHANNEL PROTECTION, TYPE A WITH AGGREGATE FILTER  
 (INLET) - ITEM 601 - ROCK CHANNEL PROTECTION, TYPE B WITH AGGREGATE FILTER



PROFILE ALONG  $\phi$  CULVERT

DESIGN AGENCY  
 O.D.O.T. - DISTRICT 11  
 ENGINEERING DEPARTMENT

DESIGNED  
 DAB  
 CHECKED  
 ANS

REVIEWED  
 JPB  
 DATE  
 4/24/20

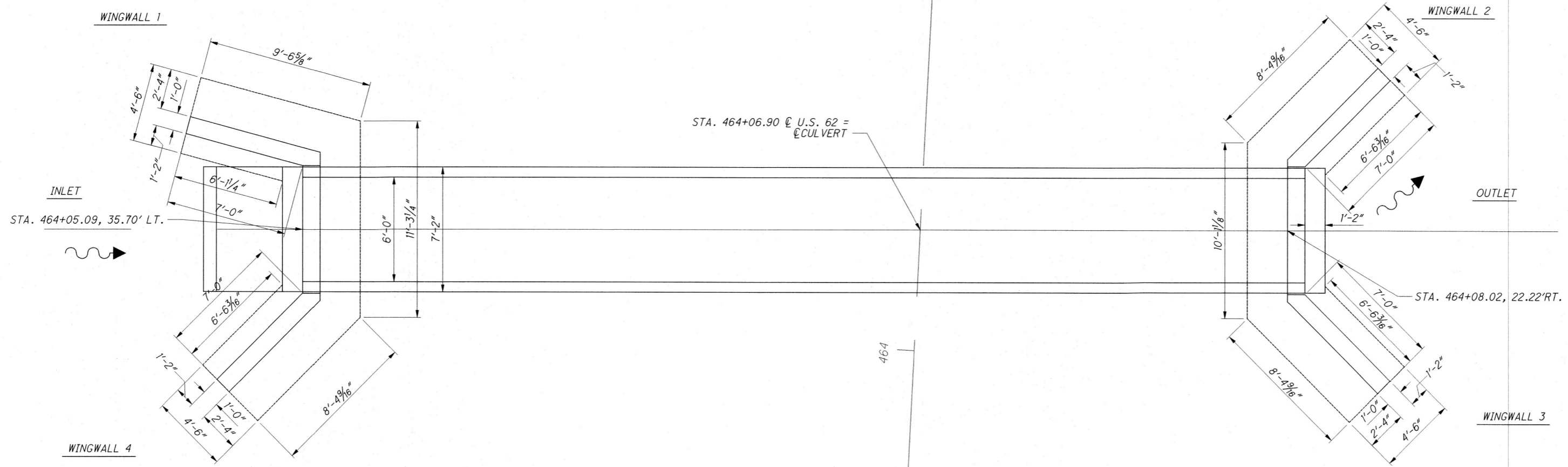
CULVERT FILE NUMBER  
 1983263

REVISION  
 XXX

CULVERT PLAN AND PROFILE  
 CULVERT NO. HOL-62-8.79  
 TRIBUTARY OF WOLF CREEK

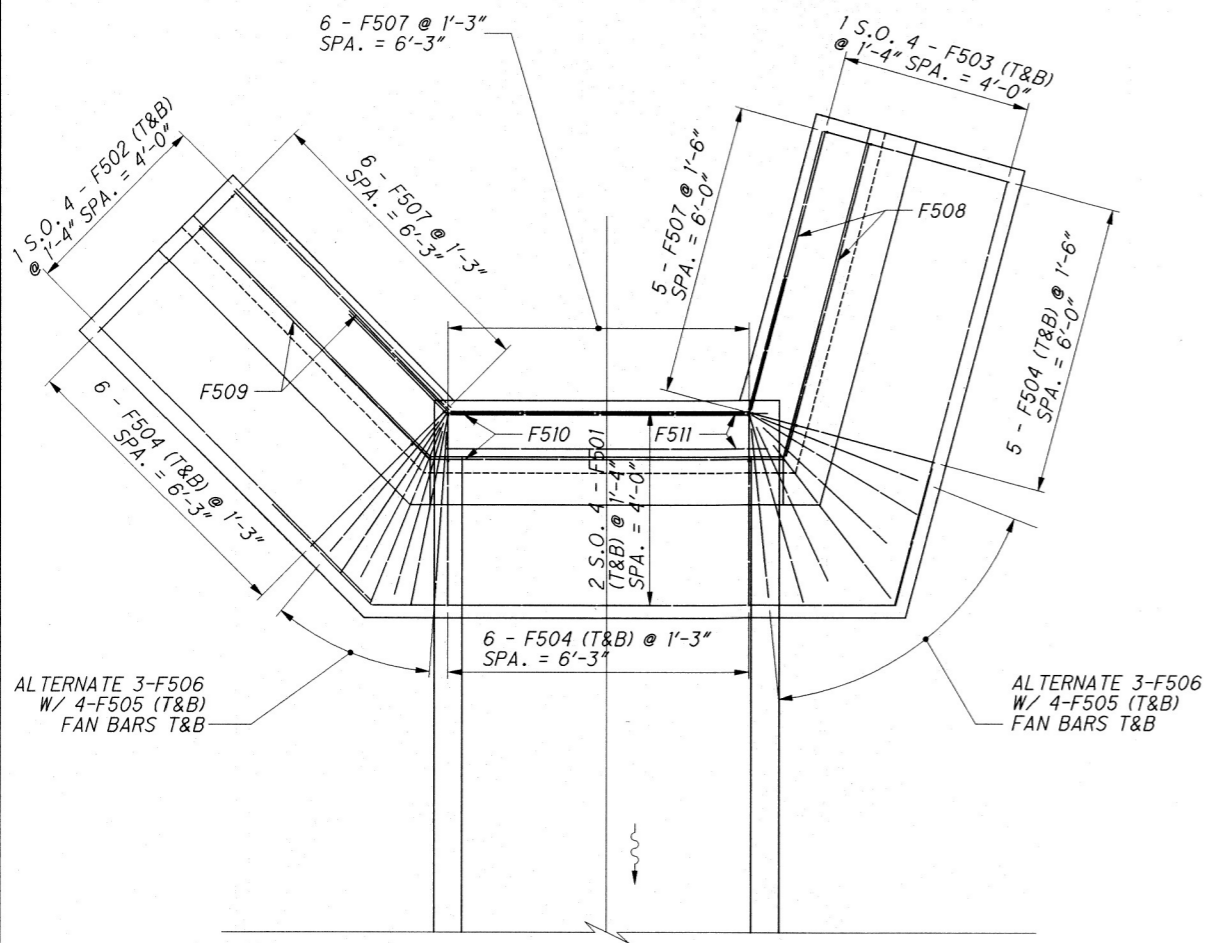
HOL-62-8.79  
 PID No. 110575

i:\ProjectData\110575\Design\Roadway\Sheets\110575\_DC001.dgn Sheet 5/21/2020 10:19:17 AM aslanina

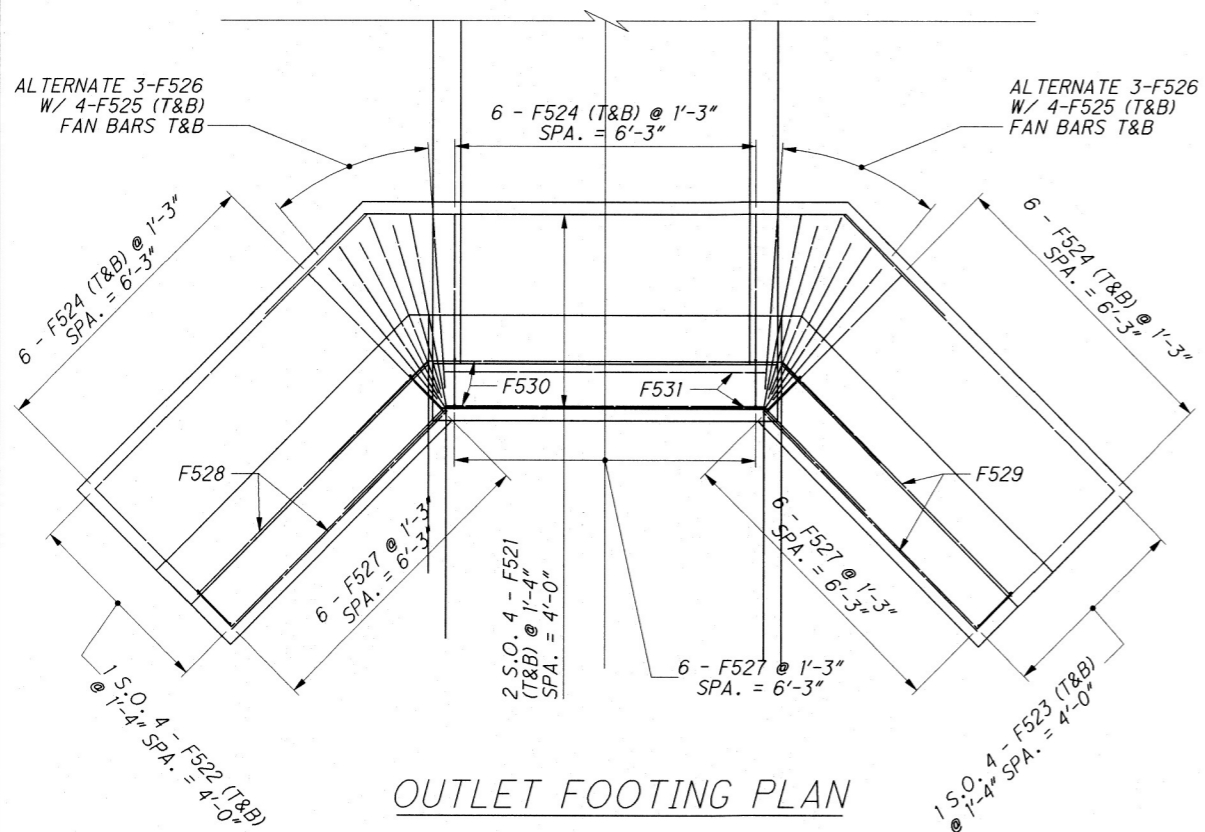


<b>HOL-62-8.79</b> PID No. 110575	<b>CULVERT DETAILS</b> CULVERT NO. HOL-62-8.79 TRIBUTARY OF WOLF CREEK		DESIGNED ANS	CHECKED BSH	DRAWN ANS	REVISED XXX	DATE 4/24/20	DESIGN AGENCY O.D.O.T. - DISTRICT 11 ENGINEERING DEPARTMENT
	2 / 7	7 / 18						

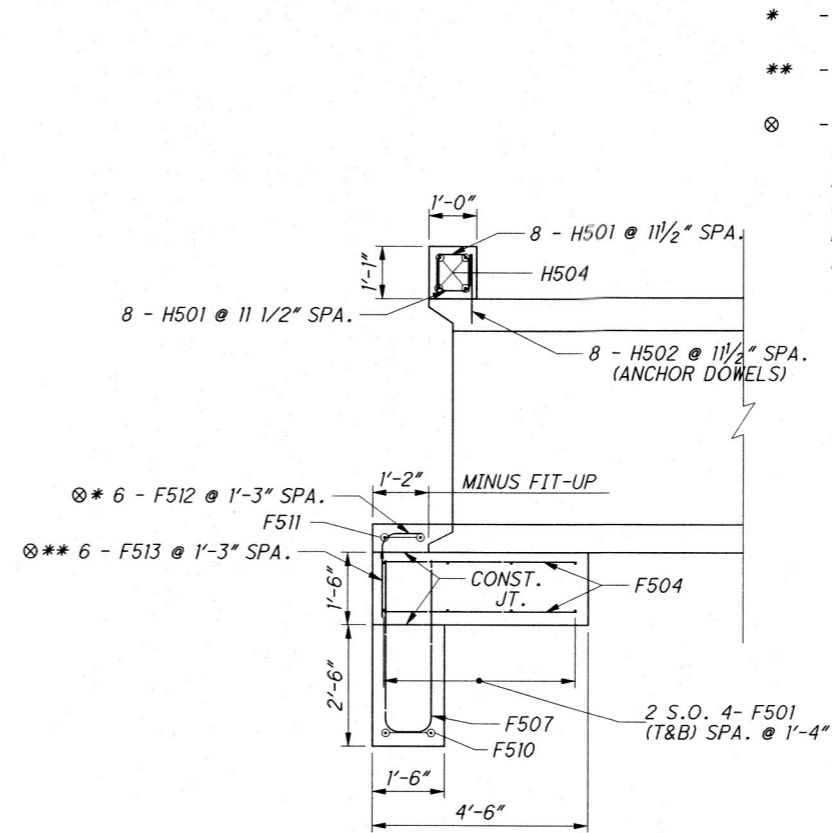
I:\ProjectData\110575\Design\Roadway\Sheets\110575\_DC002.dgn Sheet 5/21/2020 10:19:19 AM aslanina



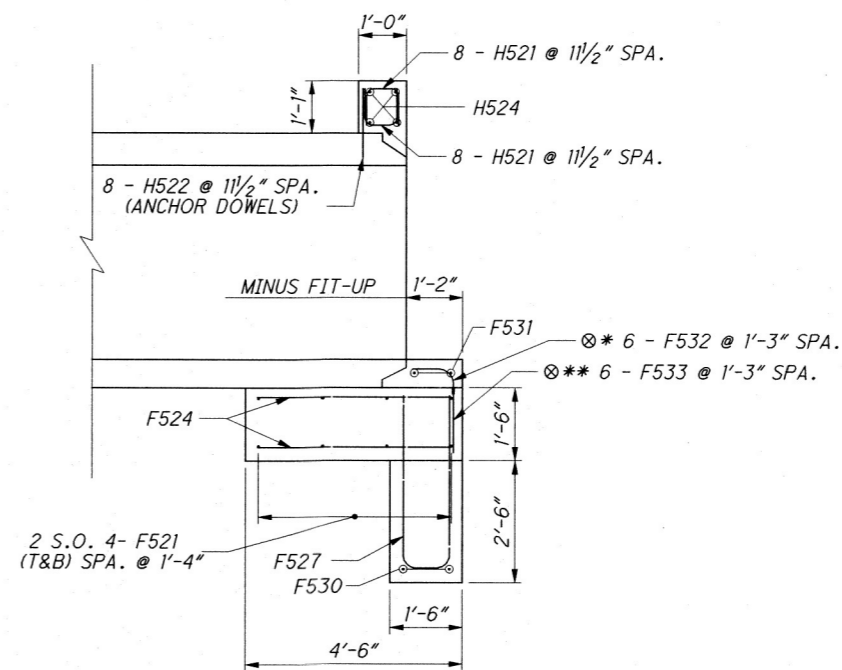
INLET FOOTING PLAN



OUTLET FOOTING PLAN



INLET HEADWALL SECTION

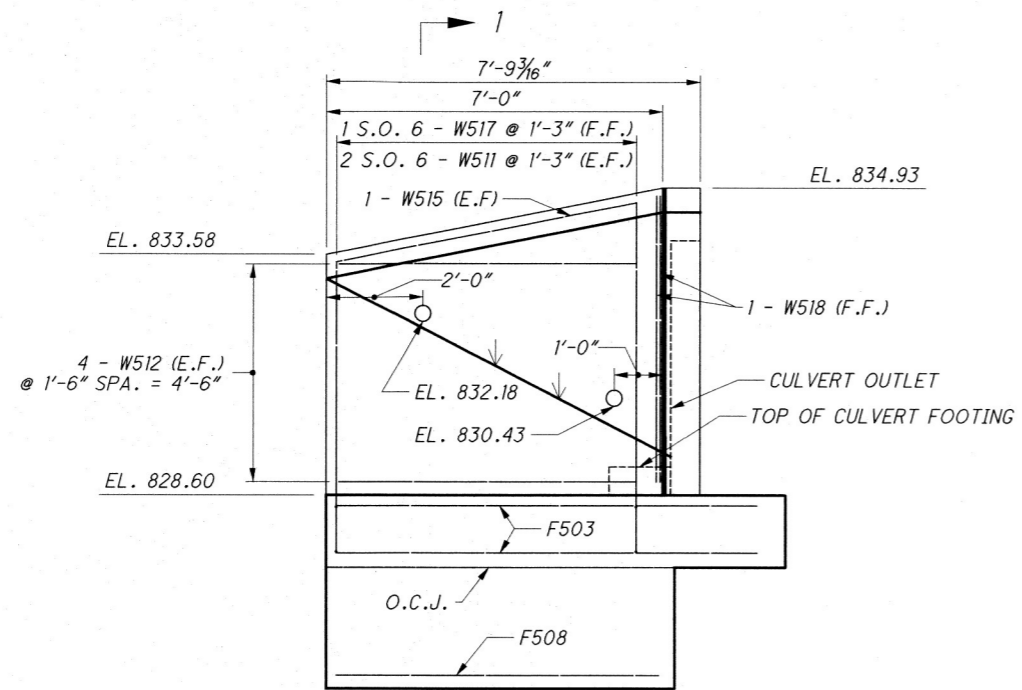


OUTLET HEADWALL SECTION

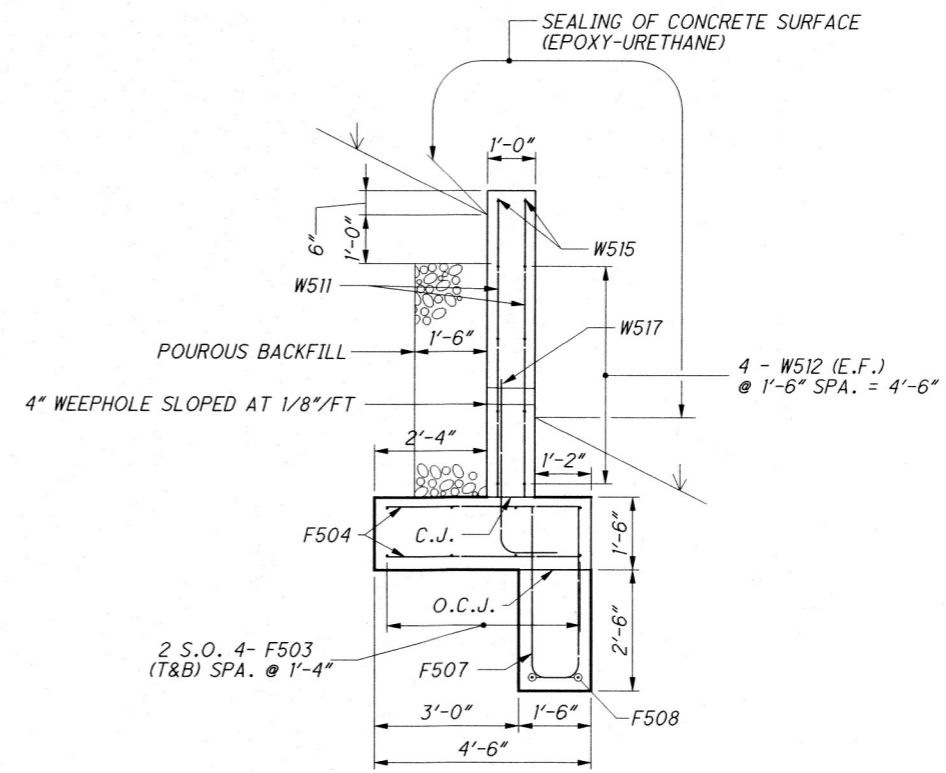
- \* - MALE MECHANICAL CONNECTOR
- \*\* - FEMALE MECHANICAL CONNECTOR
- ⊗ - F512, F513, F532, & F533 BARS WITH MECHANICAL CONNECTORS TO BE EMBEDDED INTO FOOTING AND INCLUDED WITH ITEM 509 FOR PAYMENT. THE CONTRACTOR MAY USE A THREADED INSERT WITH A MINIMUM PULLOUT STRENGTH EQUAL TO 60 KSI AS AN ALTERNATE TO THE MECHANICAL CONNECTOR.

DESIGNED	BSH	CHECKED	ANS
DRAWN	BSH	REVISED	XXX
REVIEWED	JPB	STRUCTURE FILE NUMBER	1983263
DATE	4/24/20	DESIGN AGENCY	O.D.O.T. - DISTRICT 11
ENGINEERING DEPARTMENT			
CULVERT DETAILS			
CULVERT NO. HOL-62-8.79			
TRIBUTARY OF WOLF CREEK			
HOL-62-8.79		PID No. 110575	
3 / 7		8 / 18	

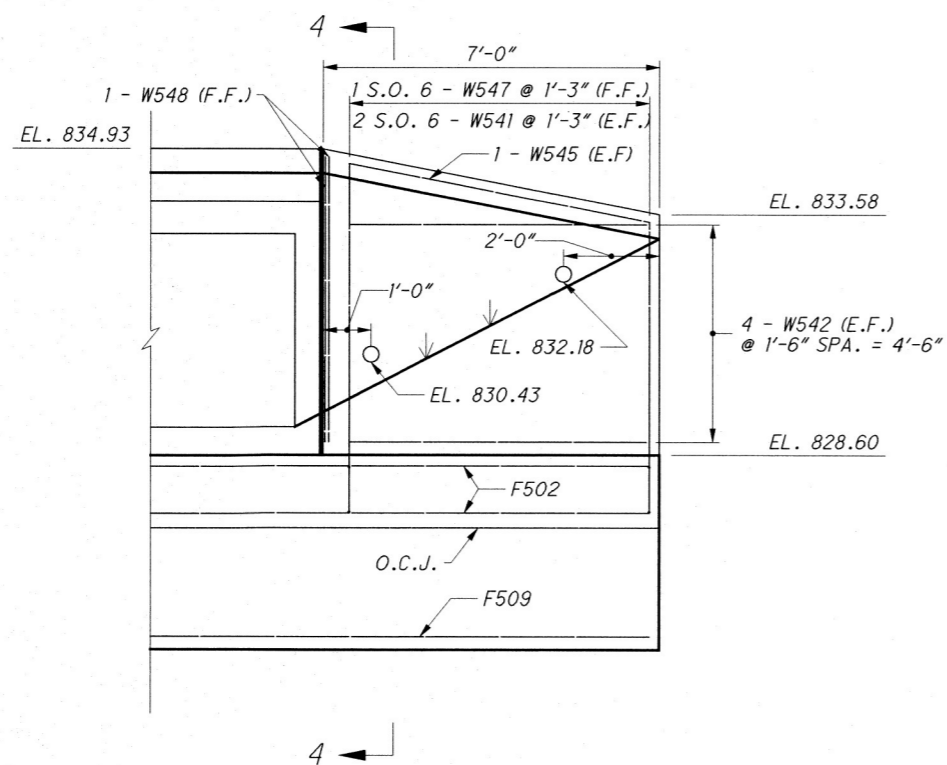




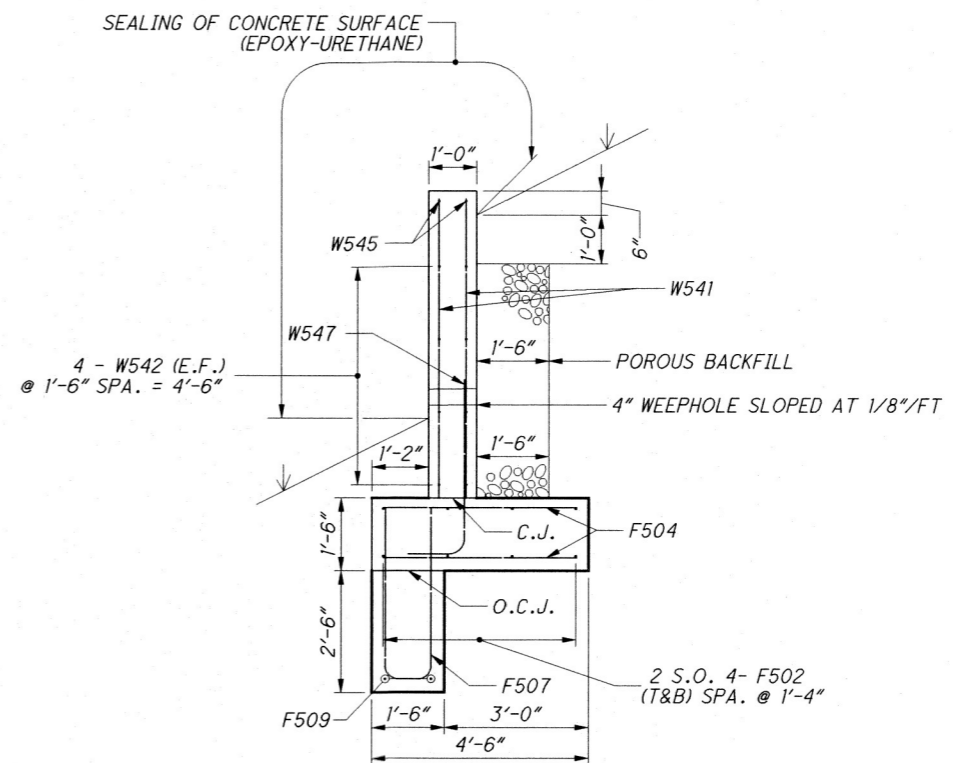
WINGWALL 1 - ELEVATION (INLET)



SECTION 1-1



WINGWALL 4 - ELEVATION (INLET)



SECTION 4-4

I:\ProjectData\110575\Design\Roadway\Sheets\110575\_DC003.dgn Sheet 5/21/2020 10:49:20 AM aslanfina

CULVERT DETAILS  
 CULVERT NO. HOL-62-8.79  
 TRIBUTARY OF WOLF CREEK

HOL-62-8.79  
 PID No. 110575

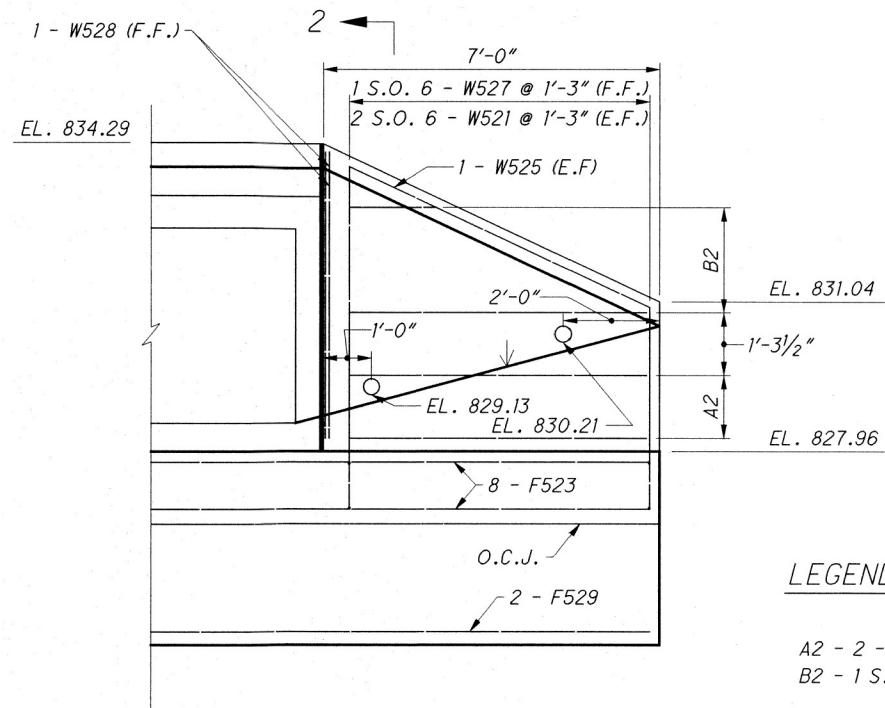
4 / 7

9  
 18

DESIGN AGENCY  
 O.D.O.T. - DISTRICT 11  
 ENGINEERING DEPARTMENT

REVIEWED DATE 4/24/20  
 JPB  
 STRUCTURE FILE NUMBER 1983263

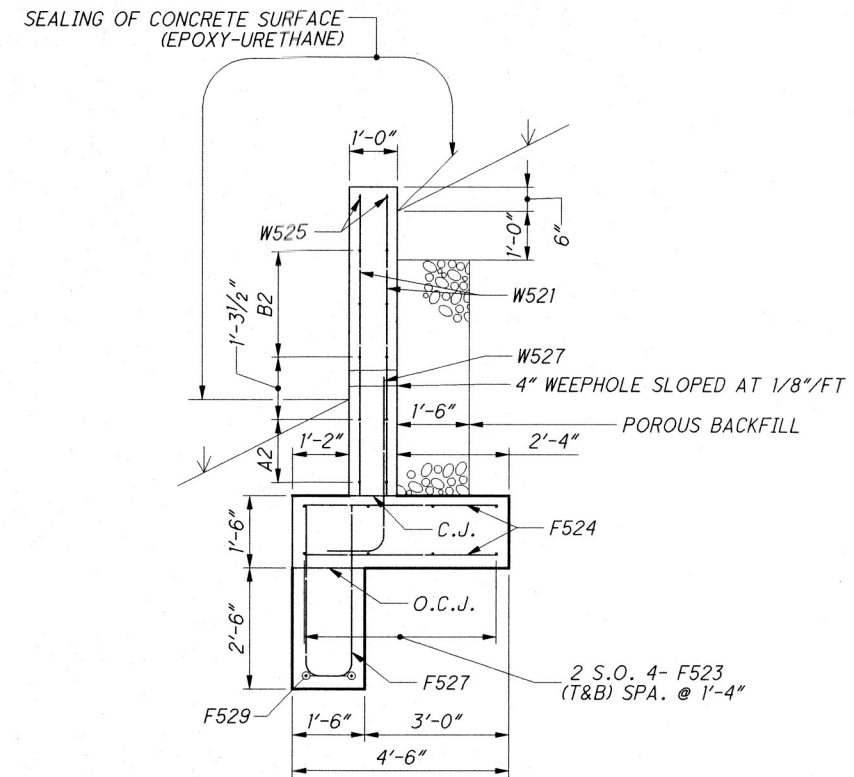
DRAWN BSH  
 DESIGNED BSH  
 CHECKED ANS  
 REVISED XXX



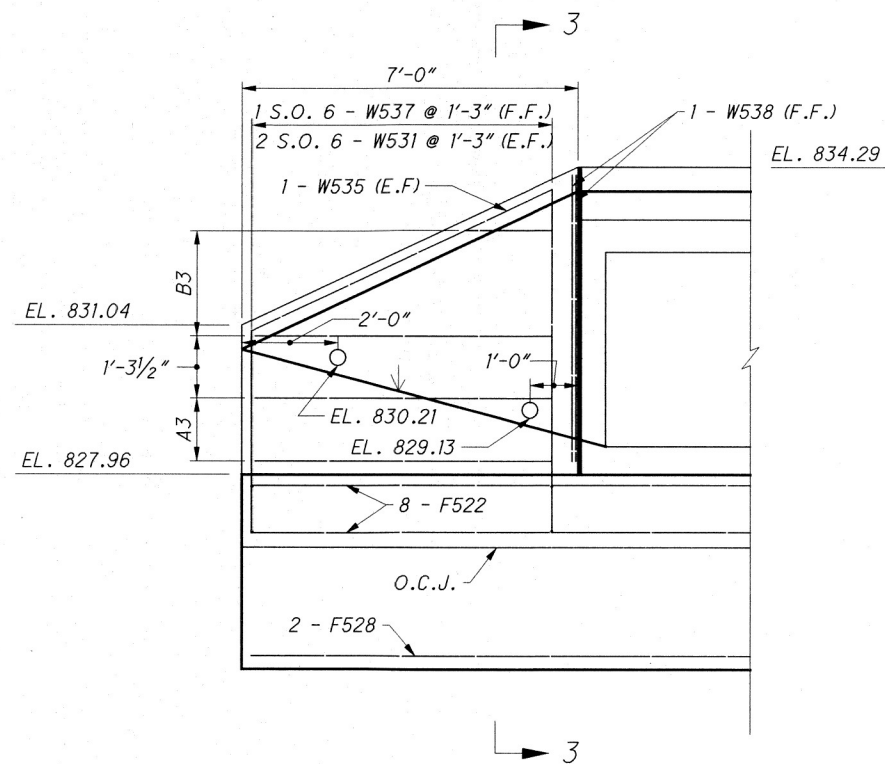
WINGWALL 2 - ELEVATION (OUTLET)

LEGEND

A2 - 2 - W522 @ 1'-3 1/2" (E.F.)  
 B2 - 1 S.O. 3 @ 1'-1" = 2'-2", 1 S.O. 2 - W523 (E.F.)



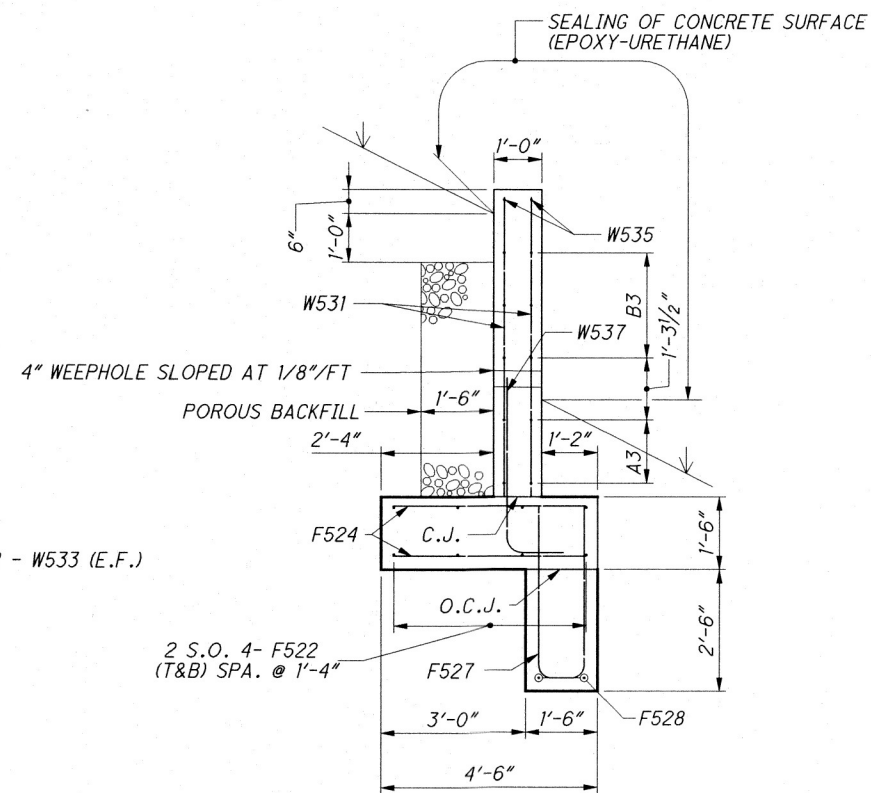
SECTION 2-2



WINGWALL 3 - ELEVATION (OUTLET)

LEGEND

A3 - 2 - W532 @ 1'-3 1/2" (E.F.)  
 B3 - 1 S.O. 3 @ 1'-1" = 2'-2", 1 S.O. 2 - W533 (E.F.)



SECTION 3-3

I:\ProjectData\10575\Design\Roadway\Sheets\10575\_DC004.dgn Sheet 5/21/2020 10:19:21AM aslam\ta

DESIGN AGENCY O.D.O.T. - DISTRICT 11 ENGINEERING DEPARTMENT	
DESIGNED BSH	DATE 4/24/20
DRAWN BSH	REVIEWED JPB
CHECKED ANS	STRUCTURE FILE NUMBER 1983263
DESIGNED BY BSH	
CHECKED BY ANS	
DRAWN BY BSH	
REVIEWED BY JPB	
DATE 4/24/20	
DESIGN AGENCY O.D.O.T. - DISTRICT 11 ENGINEERING DEPARTMENT	
CULVERT DETAILS CULVERT NO. HOL-62-8.79 TRIBUTARY OF WOLF CREEK	
HOL-62-8.79 PID No. 110575	
5 / 7	
10 18	

I:\ProjectData\10575\Design\Roadway\Sheets\10575-DC005.dgn Sheet 5/21/2020 10:19:21AM aslanina

MARK	NUMBER	TOTAL	LENGTH	WEIGHT	TYPE	DIMENSION					INC.
						A	B	C	D	E	
<b>INLET FOOTING</b>											
F501	2 S.O.	8	12' - 1" TO	120	20	2' - 10"	9"	6' - 3" TO	2' - 1"	2' - 1"	1' - 6 3/4"
	4		16' - 9"					10' - 11"			
F502	2 S.O.	8	6' - 4" TO	60	STR.						6 3/4"
	4		8' - 0"								
F503	2 S.O.	8	5' - 11" TO	62	STR.						12 1/4"
	4		9' - 0"								
F504	34	34	4' - 0"	142	STR.						
F505	16	16	3' - 6"	58	STR.						
F506	12	12	4' - 0"	50	STR.						
F507	17	17	7' - 8"	136	2	3' - 6"	11"	3' - 6"			
F508	1 S.O.	2	5' - 11" TO	13	STR.						9"
	2		6' - 8"								
F509	1 S.O.	2	6' - 4" TO	14	STR.						5"
	2		6' - 9"								
F510	1 S.O.	2	12' - 0" TO	26	20	2' - 10"	9"	6' - 3" TO	2' - 1"	2' - 1"	1' - 1"
	2		13' - 1"					7' - 4"			
F511	2	2	6' - 8"	14	STR.						
⊗ *F512	6	6	1' - 1"	7	1	5"	10"				
⊗ **F513	6	6	1' - 1"	7	STR.						
<b>SUB-TOTAL INLET FOOTING</b>				<b>709</b>							

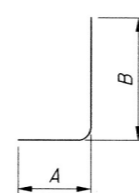
MARK	NUMBER	TOTAL	LENGTH	WEIGHT	TYPE	DIMENSION					INC.
						A	B	C	D	E	
<b>INLET HEADWALL</b>											
H501	16	16	1' - 11"	32	2	9"	8"	9"			
H502	8	8	1' - 5"	12	STR.						
H504	4	4	6' - 9"	28	STR.						
<b>SUB-TOTAL INLET HEADWALL</b>				<b>72</b>							

MARK	NUMBER	TOTAL	LENGTH	WEIGHT	TYPE	DIMENSION					INC.
						A	B	C	D	E	
<b>OUTLET FOOTING</b>											
F521	2 S.O.	8	12' - 6" TO	118	20	2' - 1"	2' - 1"	6' - 8" TO	2' - 1"	2' - 1"	1' - 1 1/4"
	4		15' - 10"					10' - 0"			
F522	2 S.O.	8	6' - 4" TO	60	STR.						6 3/4"
	4		8' - 0"								
F523	2 S.O.	8	6' - 4" TO	60	STR.						6 3/4"
	4		8' - 0"								
F524	36	36	4' - 0"	150	STR.						
F525	16	16	3' - 6"	58	STR.						
F526	12	12	4' - 0"	50	STR.						
F527	18	18	7' - 8"	144	2	3' - 6"	11"	3' - 6"			
F528	1 S.O.	2	6' - 4" TO	14	STR.						5"
	2		6' - 9"								
F529	1 S.O.	2	6' - 4" TO	14	STR.						5"
	2		6' - 9"								
F530	1 S.O.	2	12' - 5" TO	27	20	2' - 1"	2' - 1"	6' - 7" TO	2' - 1"	2' - 1"	9"
	2		13' - 2"					7' - 4"			
F531	2	2	6' - 8"	14	STR.						
⊗ *F532	6	6	1' - 1"	7	1	5"	10"				
⊗ **F533	6	6	1' - 1"	7	STR.						
<b>SUB-TOTAL OUTLET FOOTING</b>				<b>723</b>							

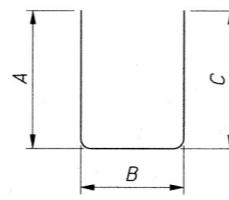
MARK	NUMBER	TOTAL	LENGTH	WEIGHT	TYPE	DIMENSION					INC.
						A	B	C	D	E	
<b>OUTLET HEADWALL</b>											
H521	16	16	1' - 11"	32	2	9"	8"	9"			
H522	8	8	1' - 5"	12	STR.						
H524	4	4	6' - 9"	28	STR.						
<b>SUB-TOTAL OUTLET HEADWALL</b>				<b>72</b>							

**REINFORCING STEEL NOTES:**

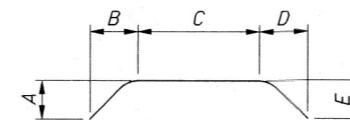
1. THE BAR SIZE NUMBER IS SPECIFIED ON THE PLANS IN THE BAR MARK COLUMN. THE FIRST DIGIT WHERE THREE DIGITS ARE USED, AND THE FIRST TWO DIGITS WHERE FOUR ARE USED, INDICATES THE BAR SIZE NUMBER. FOR EXAMPLE, S501 IS A NO. 5 BAR. BAR DIMENSIONS SHOWN ARE OUT TO OUT UNLESS OTHERWISE NOTED. R INDICATES INSIDE RADIUS, UNLESS OTHERWISE NOTED.



TYPE-1



TYPE-2



TYPE-20

⊗ F512, F513, F532, & F533 BARS WITH MECHANICAL CONNECTORS TO BE EMBEDDED INTO FOOTING AND INCLUDED WITH ITEM 509 FOR PAYMENT. THE CONTRACTOR MAY USE A THREADED INSERT WITH A MINIMUM PULLOUT STRENGTH EQUAL TO 60 KSI AS AN ALTERNATE TO THE MECHANICAL CONNECTOR.

\* MALE MECHANICAL CONNECTOR  
\*\* FEMALE MECHANICAL CONNECTOR

DESIGN AGENCY: O.D.O.T. - DISTRICT 11  
 ENGINEERING DEPARTMENT  
 DATE: 4/24/20  
 REVIEWED: JPB  
 STRUCTURE FILE NUMBER: 1983263  
 DRAWN: BSH  
 REVISION: XXX  
 DESIGNED: BSH  
 CHECKED: ANS  
**CULVERT DETAILS**  
 CULVERT NO. HOL-62-8.79  
 TRIBUTARY OF WOLF CREEK  
**HOL-62-8.79**  
**PID No. 110575**  
 6 / 7  
 11 / 18

I:\ProjectData\110575\Design\Roadway\Sheets\110575\_DC006.dgn Sheet 5/21/2020 10:19:22 AM aslamina

MARK	NUMBER	TOTAL	LENGTH	WEIGHT	TYPE	DIMENSION				
						A	B	C	D	E
INLET WINGWALL 1										
W511	2	12	4' - 10"	68	STR.					3"
	S.O.		TO							
	6		6' - 0.5"							
W512	8	8	6' - 3"	52	STR.					
	W515		2							
W517	6	6	4' - 7"	29	1	1'-2"	3'-7"			
W518	2	2	5' - 11"	12	STR.					
<b>SUB-TOTAL INLET WINGWALL 1</b>				<b>174</b>						

MARK	NUMBER	TOTAL	LENGTH	WEIGHT	TYPE	DIMENSION				
						A	B	C	D	E
INLET WINGWALL 4										
W541	2	12	4' - 10"	68	STR.					3"
	S.O.		TO							
	6		6' - 0.5"							
W542	8	8	6' - 3"	52	STR.					
	W545		2							
W547	6	6	4' - 7"	29	1	1'-2"	3'-7"			
W548	2	2	5' - 11"	12	STR.					
<b>SUB-TOTAL INLET WINGWALL 4</b>				<b>174</b>						

MARK	NUMBER	TOTAL	LENGTH	WEIGHT	TYPE	DIMENSION				
						A	B	C	D	E
OUTLET WINGWALL 2										
W521	2	12	3' - 0"	56	STR.					7"
	S.O.		TO							
	6		5' - 11"							
W522	4	4	6' - 3"	26	STR.					
W523	2	6	1' - 10"	25	STR.					26 1/2"
	S.O.		TO							
	3		6' - 3"							
W525	2	2	6' - 11"	14	STR.					
W527	6	6	4' - 7"	29	1	1'-2"	3'-7"			
W528	2	2	5' - 11"	12	STR.					
<b>SUB-TOTAL OUTLET WINGWALL 2</b>				<b>162</b>						

MARK	NUMBER	TOTAL	LENGTH	WEIGHT	TYPE	DIMENSION				
						A	B	C	D	E
OUTLET WINGWALL 3										
W531	2	12	3' - 0"	56	STR.					7"
	S.O.		TO							
	6		5' - 11"							
W532	4	4	6' - 3"	26	STR.					
W533	2	6	1' - 10"	25	STR.					26 1/2"
	S.O.		TO							
	3		6' - 3"							
W535	2	2	6' - 11"	14	STR.					
W537	6	6	4' - 7"	29	1	1'-2"	3'-7"			
W538	2	2	5' - 11"	12	STR.					
<b>SUB-TOTAL OUTLET WINGWALL 3</b>				<b>162</b>						

<b>SUB-TOTAL</b>	<b>672</b>									
<b>SUB-TOTAL (CARRIED FROM SHEET 11)</b>	<b>1,576</b>									
<b>TOTAL WEIGHT</b>	<b>2,248</b>									

DESIGN AGENCY <b>O.D.O.T. - DISTRICT 11</b> ENGINEERING DEPARTMENT
DATE 4/24/20
REVIEWED JPB
STRUCTURE FILE NUMBER 1983263
DRAWN BSH
REVISED XXX
DESIGNED BSH
CHECKED ANS
<b>CULVERT DETAILS</b>
CULVERT NO. HOL-62-8.79
TRIBUTARY OF WOLF CREEK
<b>HOL-62-8.79</b>
PID No. 110575
7 / 7
12 / 18

**CALCULATIONS CARRIED ON THIS SHEET**

**ITEM 601 - RIPRAP, TYPE D**

41.20 SQ. FT. (CADD AREA) ÷ 9 = 4.58 SQ. YD.  
(USE 5 SQ. YD.)

**ITEM 601 - ROCK CHANNEL PROTECTION, TYPE A WITH AGGREGATE FILTER**

136.06 SQ. FT. (CADD AREA) × 3 FT. ÷ 27 = 15.12 CU. YD.  
(USE 15 CU. YD.)

**ITEM 601 - ROCK CHANNEL PROTECTION, TYPE B WITH AGGREGATE FILTER**

76.37 SQ. FT. (CADD AREA) × 2.5 FT. ÷ 27 = 7.07 CU. YD.  
(USE 7 CU. YD.)

ESTIMATED QUANTITIES				
ITEM	EXTENSION	TOTAL	UNIT	DESCRIPTION
606	15050	187.50	FT	GUARDRAIL, TYPE MGS
606	26150	1	EACH	ANCHOR ASSEMBLY, MGS TYPE E
606	26550	1	EACH	ANCHOR ASSEMBLY, MGS TYPE T
202	11000	LS		STRUCTURE REMOVED
503	11101	LS		COFFERDAMS AND EXCAVATION BRACING, AS PER PLAN
503	21100	186	CY	UNCLASSIFIED EXCAVATION (WINGWALL FOOTING)
509	10000	2,200	LB	EPOXY COATED REINFORCING STEEL
511	46010	5.4	CY	CLASS QC1 CONCRETE, RETAINING/WINGWALL NOT INCLUDING FOOTING
511	46510	17.8	CY	CLASS QC1 CONCRETE, FOOTING
511	46610	0.6	CY	CLASS QC1 CONCRETE, HEADWALL
512	10100	28	SY	SEALING OF CONCRETE SURFACES (EPOXY-URETHANE)
512	33000	68	SY	TYPE 2 WATERPROOFING
512	33010	57	SY	TYPE 3 WATERPROOFING
516	13600	25	SF	1" PREFORMED EXPANSION JOINT FILLER
518	21200	6	CY	POROUS BACKFILL WITH GEOTEXTILE FABRIC
601	11000	5	SY	RIPRAP, TYPE D
601	32010	15	CY	ROCK CHANNEL PROTECTION, TYPE A WITH AGGREGATE FILTER
601	32110	7	CY	ROCK CHANNEL PROTECTION, TYPE B WITH AGGREGATE FILTER
611	94701	58	FT	6' X 4' CONDUIT, TYPE A, 706.05, AS PER PLAN (DESIGN COVER = 2<3)
613	41200	104	CY	LOW STRENGTH MORTAR BACKFILL