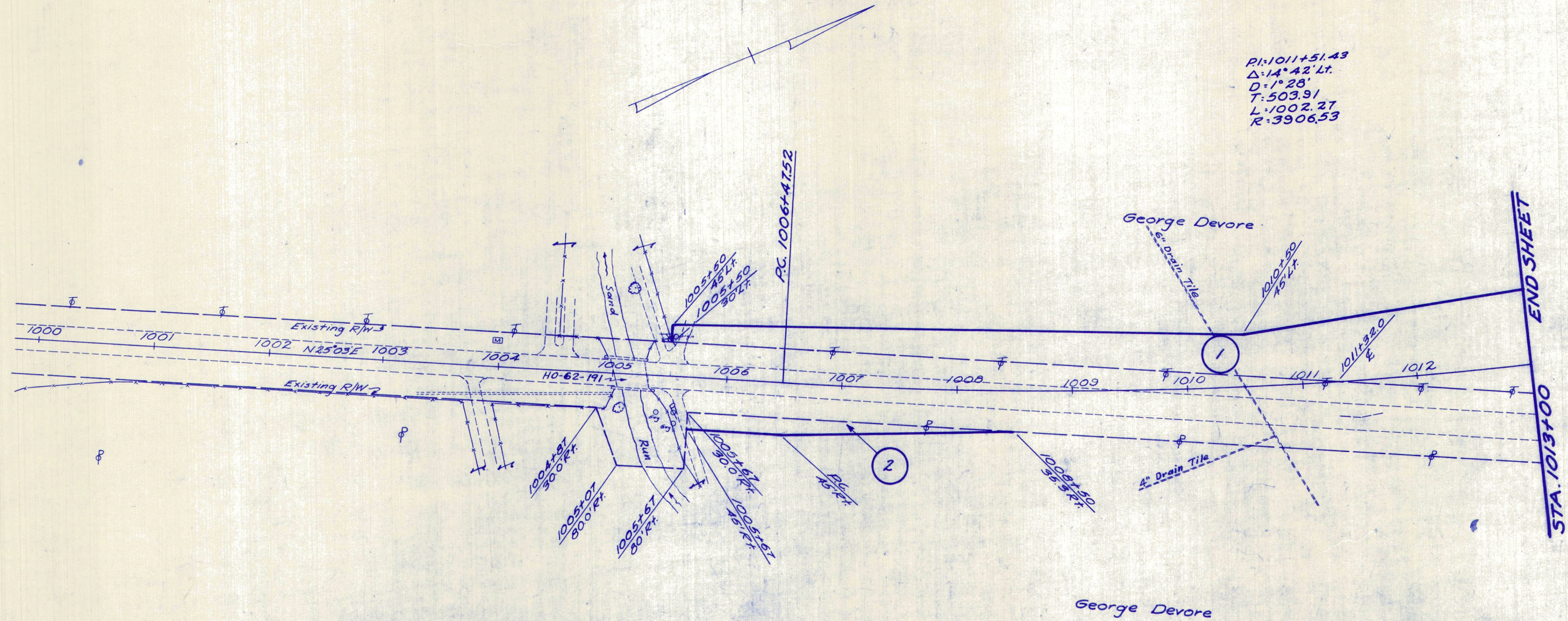


HOLMES COUNTY - HARDY TOWNSHIP
 SEC. 22 - TWP 9 - RANGE 7

FED. RD. DIVISION	STATE	PROJECT
2	OHIO	

1
2

HOL-62-(1904-19.07)
 R/W PLAN



PI: 1011+51.43
 Δ: 14° 42' Lt.
 D: 1° 28'
 T: 503.91
 L: 1002.27
 R: 3906.53

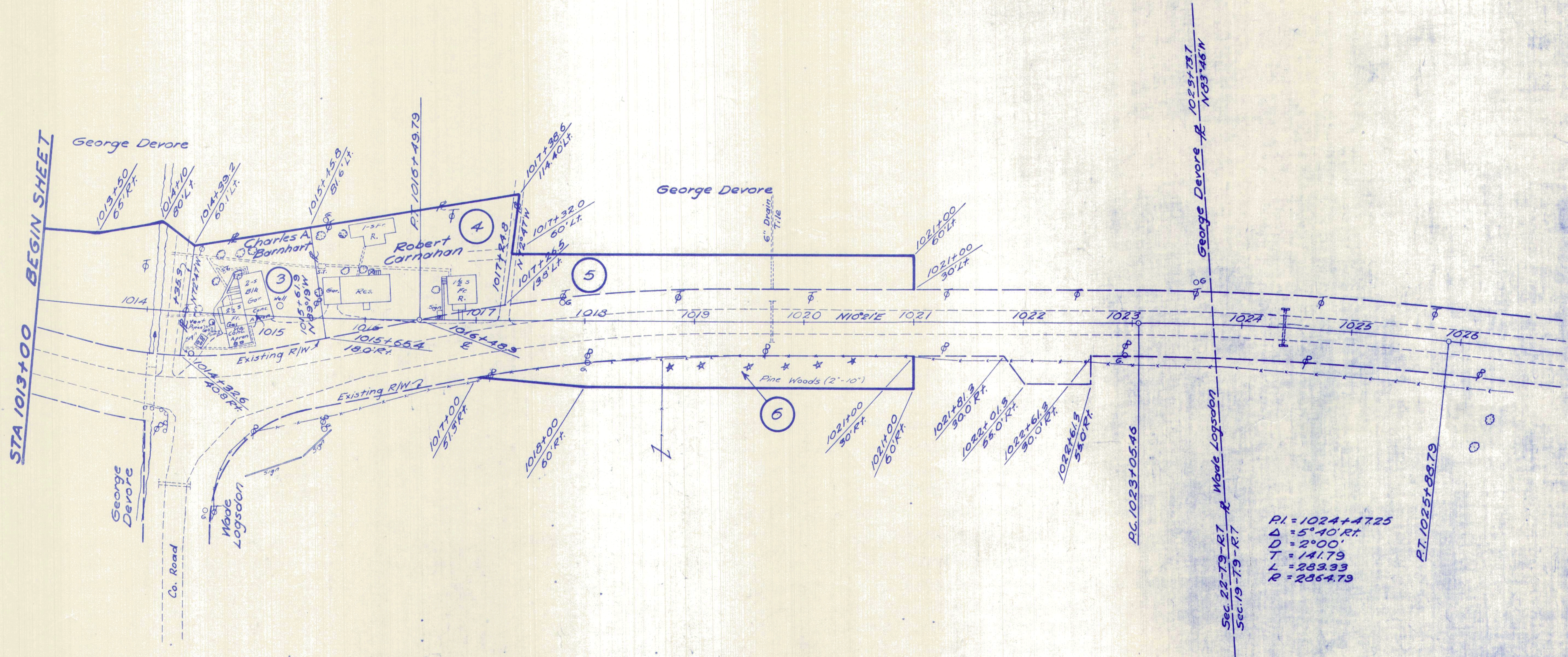
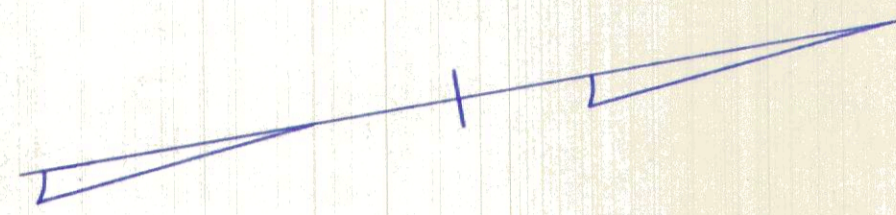
- ① ②
 George Devore
- ① Total Area = 0.968 Acs.
 - ② Total Area = 0.063 Acs.

HOLMES COUNTY ~ HARDY TOWNSHIP
 SEC. 22 - TWP. 9 - RANGE 7

FED. RD. DIVISION	STATE	PROJECT	2 2
2	OHIO		

HOL-62-(1904-1907)
 R/W PLAN

18-6



3
 Charles A. Barnhart
 Leland J. Barnhart
 Total Area = 0.285 A^c

4
 Robert Carnahan
 Total Area = 0.406 A^c

5
 George Devore
 Total Area = 0.282 A^c

6
 Wade Logsdon
 Total Area = 0.225 A^c

PI = 1024+47.25
 Δ = 5° 40' R.
 D = 2° 00'
 T = 141.79
 L = 283.33
 R = 2864.79

STA 1013+00 BEGIN SHEET

George Devore R. 1023+73.7
 N 63° 46' N

Sec. 22-19-R7 R. Wade Logsdon
 Sec. 19-19-R7

PT. 1025+88.79

PC 1023+05.46