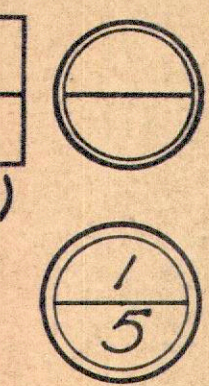


# SUMMARY OF ADDITIONAL RIGHT OF WAY REQUIRED FOR PROJECT

FED. RD. DIVISION	STATE	PROJECT
2	OHIO	

HOL-62 (10.00-14.10)  
LIMITED ACCESS



PARCEL No	OWNER	AREA-Ac	EXIST. BLDG'S	SHEET No	REMARKS
1-LA	Glen Snow	0.620	Yes	2	
2-LA	James & Luella Uhl	0.246	No	2	
3-LA	Larry Moore	0.149	No	2	
4-LA	James & Luella Uhl	2.289	No	2	
4-A	James & Luella Uhl	0.418	No	2	
4-B-LA	James & Luella Uhl	2.842	No	2	
5-LA	Murl Hoff Bell	1.003	No	2	
5-A	Murl Hoff Bell	0.099	No	2	
6-LA	Anna Duncan	0.716	No	2	
6-A	Anna Duncan	0.110	No	2	
6-B	Anna Duncan	0.023	No	2	
7-LA	Murl Hoff Bell	4.029	No	2	
7-X	Murl Hoff Bell	0.069	No	2	
7-Y	Murl Hoff Bell	0.092	No	2	
8-LA	Emory L. Bell	2.227	No	2	
9-LA	June & Loyal Ruegsegger	6.210	No	2 & 3	
9-X	June & Loyal Ruegsegger	0.032	No	3	
9-Y	June & Loyal Ruegsegger	0.060	No	3	
10-LA	Vera M. Anderson	8.389	No	3	
10-A	Vera M. Anderson	1.066	No	3	
10-B	Vera M. Anderson	0.675	No	3	
10-C	Vera M. Anderson	0.253	No	3	
10-X	Vera M. Anderson	0.046	No	3	
10-XX	Vera M. Anderson	0.037	No	3	
10-Y	Vera M. Anderson	0.193	No	3	
10-Z	Vera M. Anderson	0.312	No	3	
11-LA	James E. Carpenter	6.164	No	3 & 4	
11-X	James E. Carpenter	0.110	No	3	
11-Y	James E. Carpenter	0.142	No	3	
12-LA	Cleveland, Akron, Cincinnati -	0.372	No	4	
12-SL	Railway	0.031	No	4	
13-LA	James E. Carpenter	3.263	Yes	4	
13-A	James E. Carpenter	0.034	No	4	
13-B	James E. Carpenter	0.787	No	4	
14-LA	Prudy Investment Co. Inc.	6.635	No	4	
14-X	Prudy Investment Co. Inc.	0.137	No	4	
15-LA	James E. Carpenter	4.449	No	4	
15-S	James E. Carpenter	0.149	No	4	
16	Carl & Annabell Clark	0.136	No	4	
17-LA	Robert M. Kinsey	3.214	No	4	
18-LA	Wm Bucy & Genevive Mark	9.027	Yes	4 & 5	
18-A	Wm Bucy & Genevive Mark	0.941	No	4	
19-LA	Welze & Catherine Waltman	15.071	No	5	
20-LA	Walter Ling	4.766	No	5	
21-LA	Chas. B. Jr. & Delphia J. McKelvey	0.141	No	5	

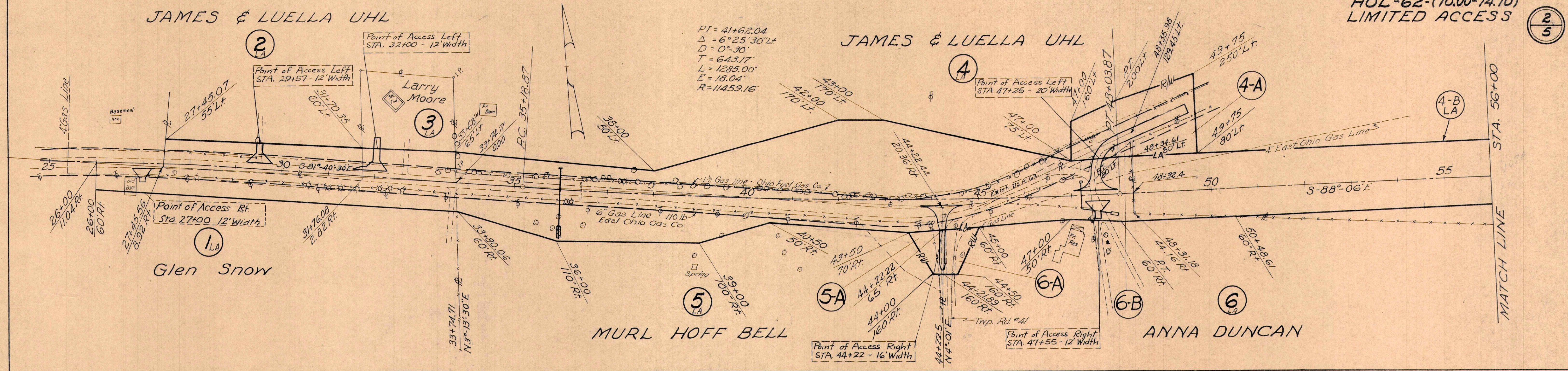
# KILLBUCK TWP. - SEC. 19 & 12 T-8-N - R-8-W

FED. RD. DIVISION	STATE	PROJECT
2	OHIO	

123  
126

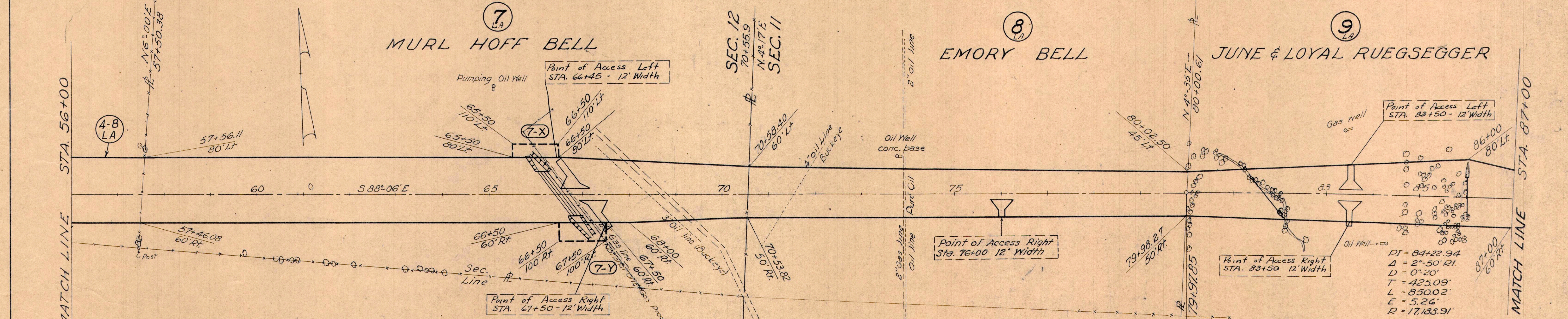
HOL-62-(10.00-14.10)  
LIMITED ACCESS

2  
5



James & Luella Uhl			Murl Hoff Bell			Anna Duncan				
1 LA Glen Snow P.R.O. .471 A <sup>c</sup> T.B.A. .620 A <sup>c</sup>	2 LA James & Luella Uhl P.R.O. .374 A <sup>c</sup> T.B.A. .246 A <sup>c</sup>	3 LA Larry Moore P.R.O. .142 A <sup>c</sup> T.B.A. .149 A <sup>c</sup>	4-B LA T.B.A. 2.842 A <sup>c</sup>	4 LA P.R.O. .769 A <sup>c</sup> T.B.A. 2.289 A <sup>c</sup>	4-A P.R.O. .264 A <sup>c</sup> T.B.A. .418 A <sup>c</sup>	5 LA P.R.O. .907 A <sup>c</sup> T.B.A. 1.003 A <sup>c</sup>	5-A T.B.A. .099 A <sup>c</sup>	6 LA P.R.O. .202 A <sup>c</sup> T.B.A. .716 A <sup>c</sup>	6-A T.B.A. .110 A <sup>c</sup>	6-B P.R.O. .062 A <sup>c</sup> T.B.A. .023 A <sup>c</sup>

# KILLBUCK TWP. - SEC. 11 & 12 T-8-N - R-8-W



Murl Hoff Bell			Emory L. Bell
7-X Murl Hoff Bell T.B.A. .069 A <sup>c</sup>	7-Y Murl Hoff Bell T.B.A. .092 A <sup>c</sup>	7 Murl Hoff Bell T.B.A. 4.029 A <sup>c</sup>	8 Emory L. Bell T.B.A. 2.227 A <sup>c</sup>

Plans Completed	Date
Revisions: Added Limited Access, added Parcels 4-A, 5-A, 6-A & 6-B, indicated access points.	10-1-58
Added Access at Rt. Sta. 76+00	2-26-59
Added Parcel 4-B-LA	3-25-59
Added Point of Access Rt Sta 27+00	3-25-59
	4-15-59

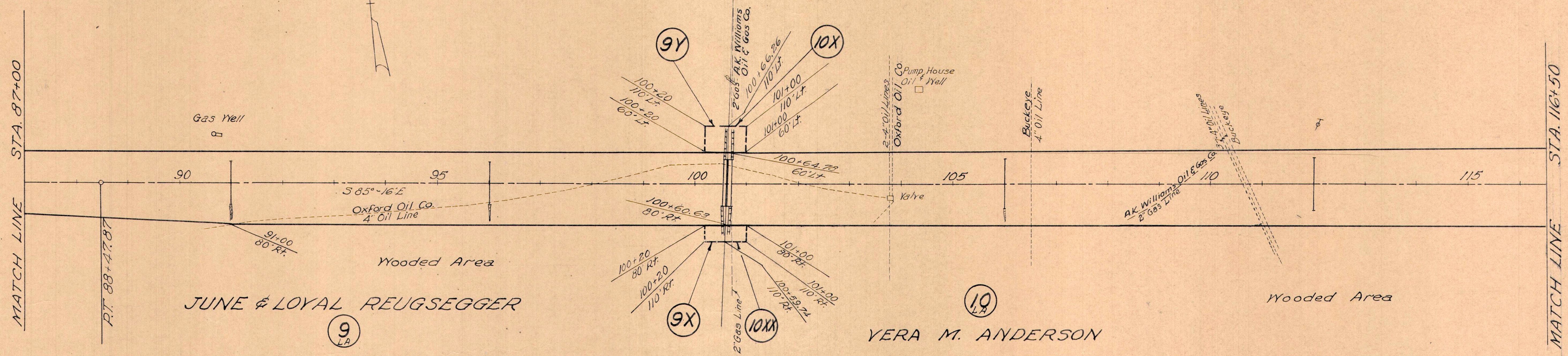
# KILLBUCK TWP. SEC. 11 - T-8-N - R-8-W

FED. RD. DIVISION	STATE	PROJECT
2	OHIO	

124  
126

HOL-62-(10.00-14.10)  
LIMITED ACCESS

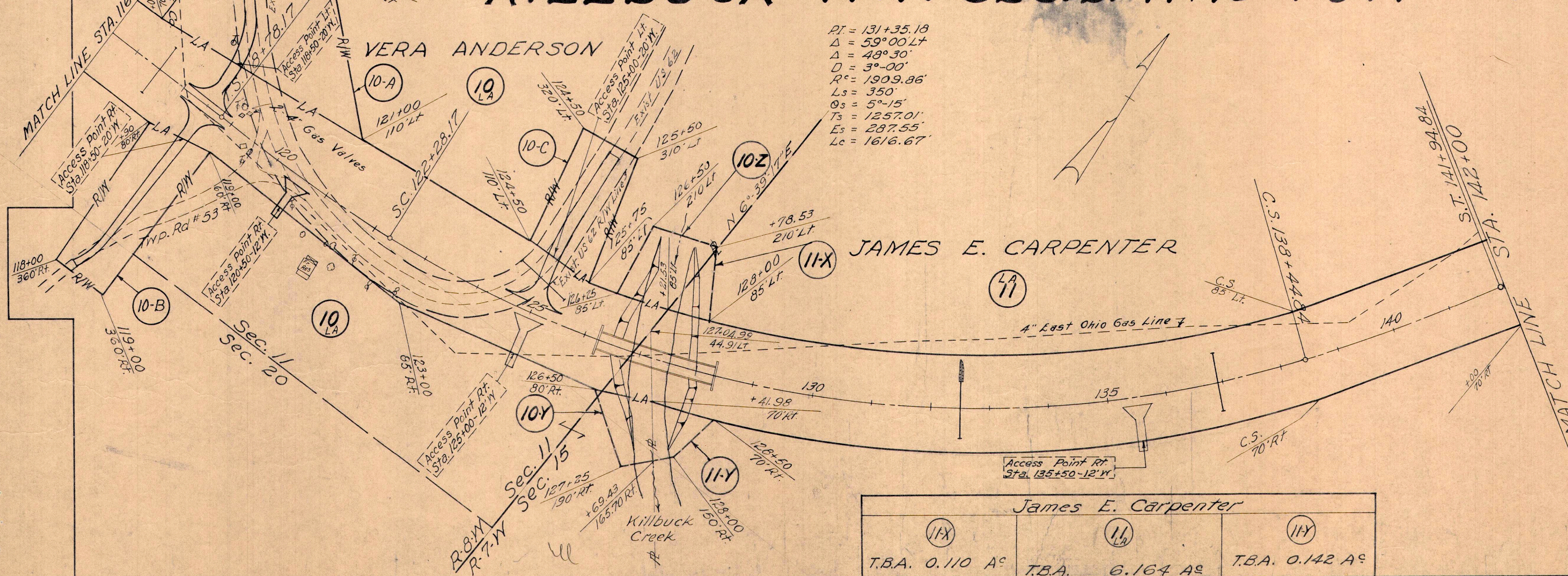
3  
5



June & Loyal Reugsegger		
9X	9	9Y
T.B.A. 0.032 A <sup>c</sup>	T.B.A. 6.210 A <sup>c</sup>	T.B.A. 0.060 A <sup>c</sup>

Vera M. Anderson							
10X	10XX	10	10Y	10Z	10A	10B	10C
T.B.A. 0.046 A <sup>c</sup>	T.B.A. 0.037 A <sup>c</sup>	P.R.O. 1.110 A <sup>c</sup> T.B.A. 8.389 A <sup>c</sup>	T.B.A. 0.193 A <sup>c</sup>	T.B.A. 0.312 A <sup>c</sup>	P.R.O. .337 A <sup>c</sup> T.B.A. 1.066 A <sup>c</sup>	T.B.A. .675 A <sup>c</sup>	P.R.O. .275 A <sup>c</sup> T.B.A. .253 A <sup>c</sup>

# KILLBUCK TWP. SEC. 20-11 & 15 - T-8-N - R-7 & 8-W



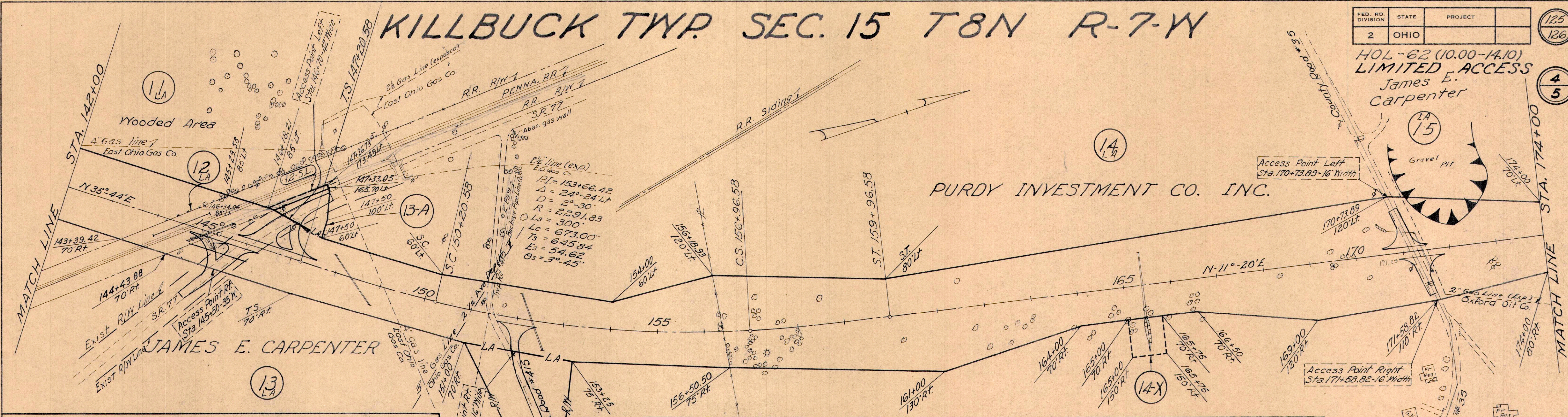
James E. Carpenter		
11X	11	11Y
T.B.A. 0.110 A <sup>c</sup>	T.B.A. 6.164 A <sup>c</sup>	T.B.A. 0.142 A <sup>c</sup>

Plans Completed	10-20-58
Revisions: Added Limited Access	
Added Parcels 10-A, 10-B & 10-C	
Changed Match Line, Indicated	
Access Points	2-26-59

# KILLBUCK TWP. SEC. 15 T8N R-7-W

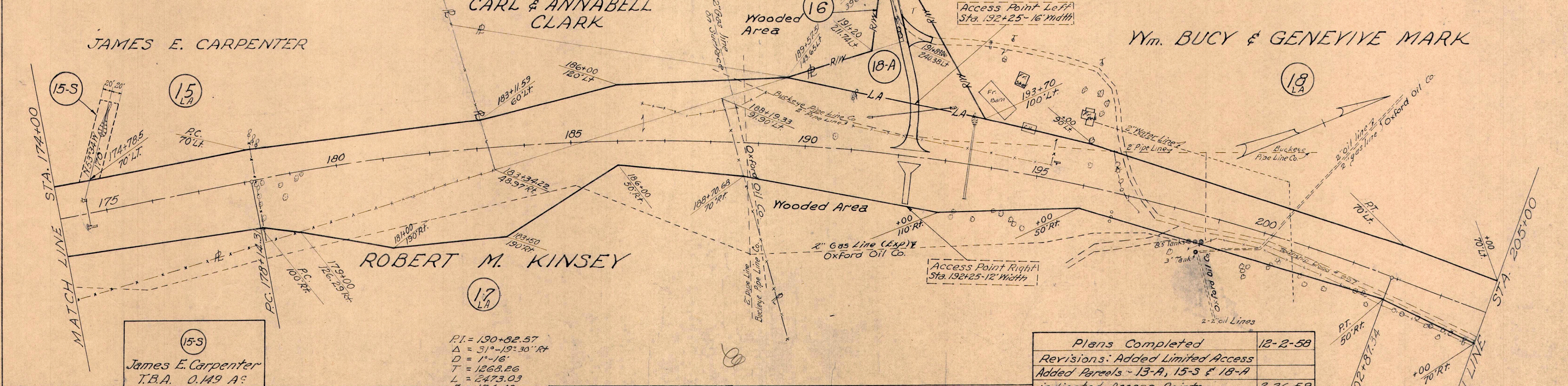
FED. RD. DIVISION	STATE	PROJECT	
2	OHIO		

HOL-62 (10.00-14.10)  
**LIMITED ACCESS**  
 James E. Carpenter



Cleveland, Akron and Cincinnati Railway		James E. Carpenter		Purdy Investment Co Inc.	
LA 12	12SL	13	13-A	13-B	14
T.B.A.	0.372 A <sup>c</sup>	T.B.A.	0.031 A <sup>c</sup>	T.B.A.	0.137 A <sup>c</sup>
		P.R.O. 0.255 A <sup>c</sup>	P.R.O. 0.103 A <sup>c</sup>	T.B.A.	6.635 A <sup>c</sup>
		T.B.A. 3.263 A <sup>c</sup>	T.B.A. 0.034 A <sup>c</sup>	T.B.A.	0.137 A <sup>c</sup>

# KILLBUCK TWP. SEC. 15 & 16 T-8N R-7-W



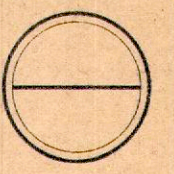
James E. Carpenter		Carl & Annabell Clark		Robert M. Kinsey		Ym. Bucy & Genevive Mark	
15	15-S	16	17	17	18-A	18	18
T.B.A.	0.149 A <sup>c</sup>	T.B.A.	0.136 A <sup>c</sup>	T.B.A.	0.941 A <sup>c</sup>	T.B.A.	9.027 A <sup>c</sup>
				P.R.I. = 190+82.57			
				Δ = 31°-19'30" RT			
				D = 1°-16'			
				T = 1268.26			
				L = 2473.03			
				E = 174.43			
				R = 4523.34			

Plans Completed	12-2-58
Revisions: Added Limited Access	
Added Parcels - 13-A, 15-S & 18-A	
Indicated Access Points	2-26-59
Added 2" pipe line & 2" water line Lt. Sta. 198+00	3-20-59
Added Parcel - 13-B - Changed 16 LA to 16	3-25-59

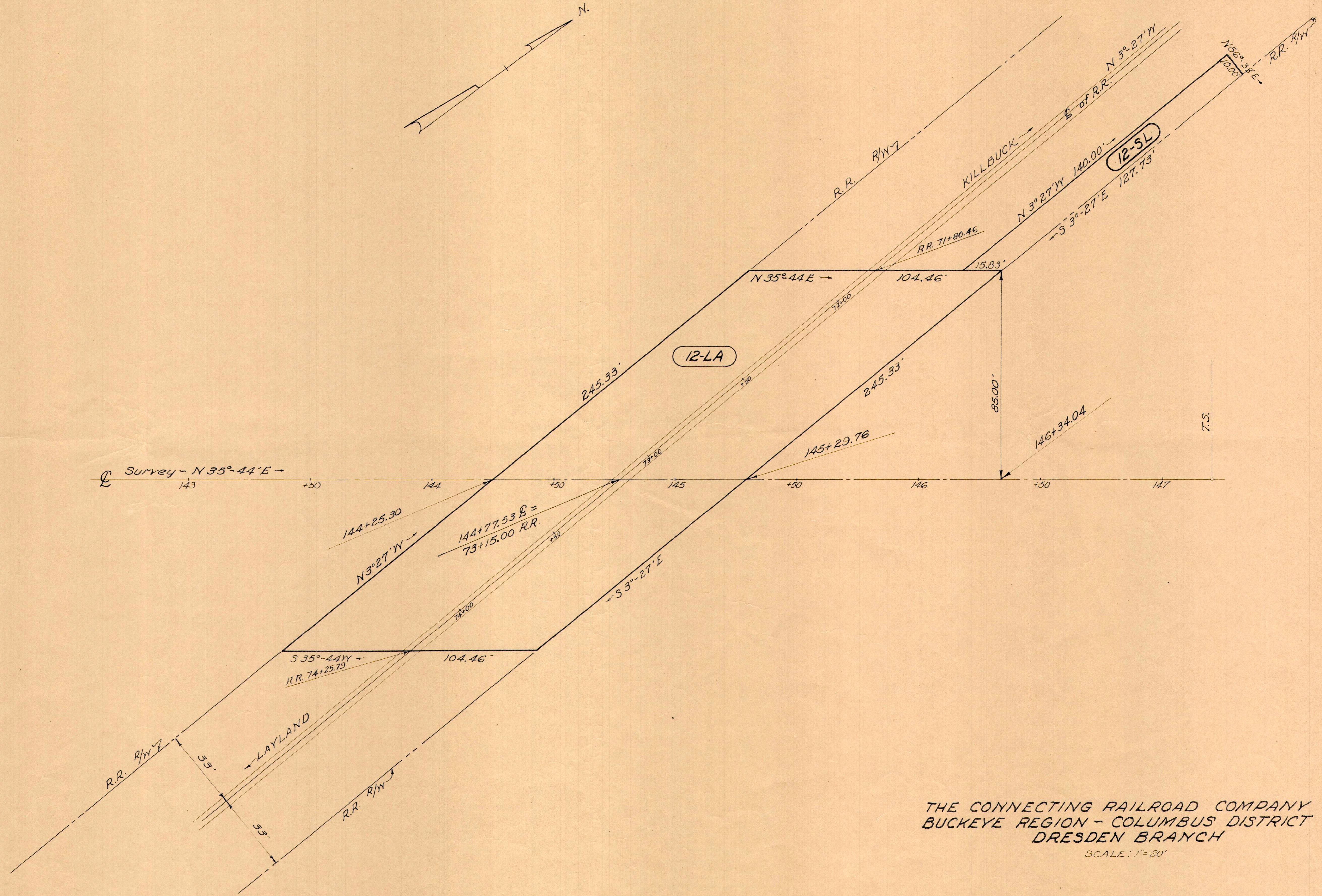
# KILLBUCK TWP. SEC. 15 T-8N R-7-W

FED. RD. DIVISION	STATE	PROJECT
2	OHIO	

HOL-62-(10.00-14.10)



4-A  
5



THE CONNECTING RAILROAD COMPANY  
 BUCKEYE REGION - COLUMBUS DISTRICT  
 DRESDEN BRANCH  
 SCALE: 1" = 20'

12-LA	- -	0.372	AS
12-SL	- -	0.031	AS

# KILLBUCK TWP. SEC. 6 & 7 T-8-N R-7-W

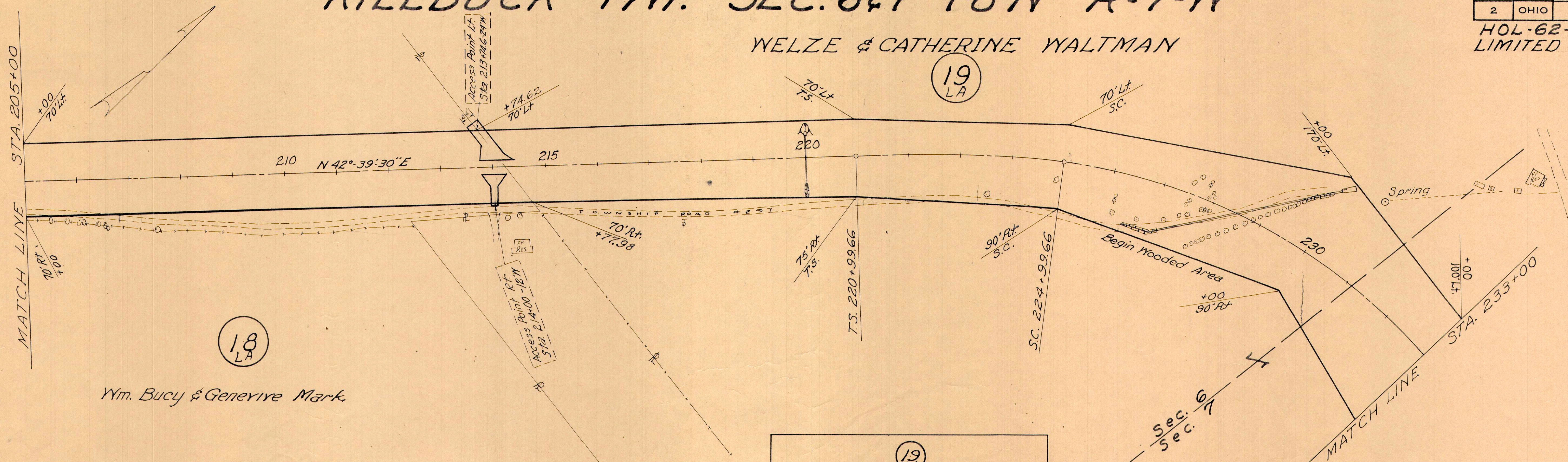
WELZE & CATHERINE WALTMAN

FED. RD. DIVISION	STATE	PROJECT
2	OHIO	

126  
126

HOL-62-(10.00-14.10)  
LIMITED ACCESS

5  
5

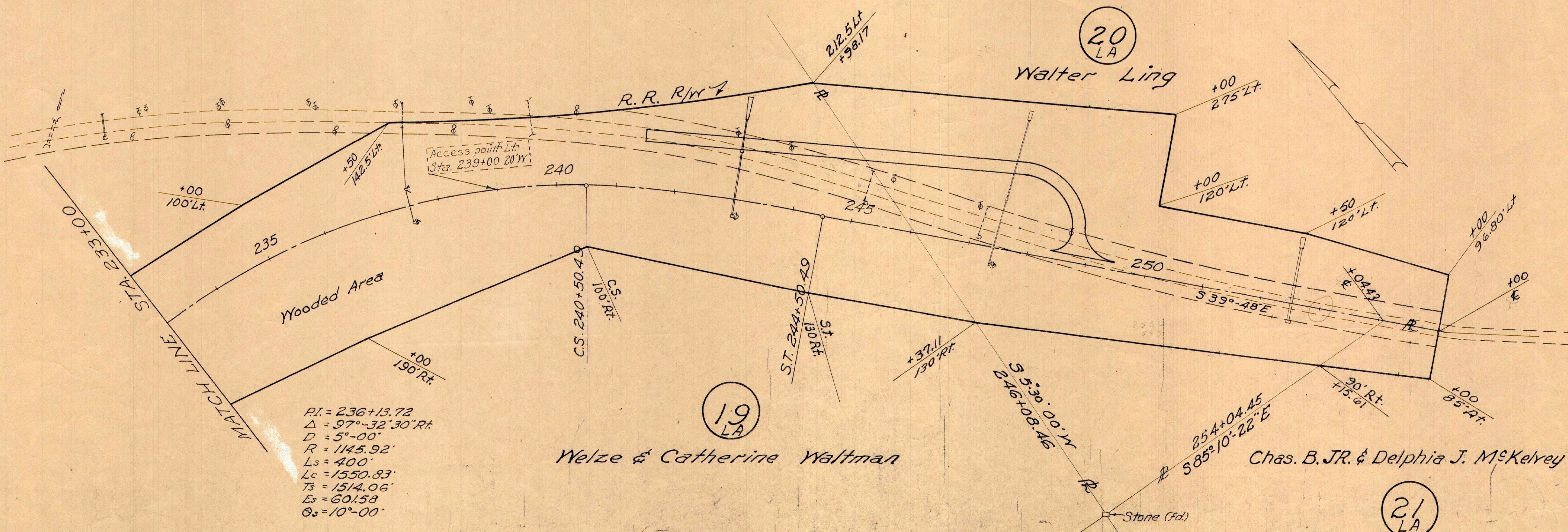


18  
LA

Wm. Bucy & Genevive Mark

19  
LA  
Welze & Catherine Waltman  
R.R.O. 0.960 A<sup>s</sup>  
T.B.A. 15.071 A<sup>s</sup>

# KILLBUCK TWP. SEC. 7 T-8-N R-7-W



20  
LA

Walter Ling

20  
LA  
Walter Ling  
R.R.O. 1.232 A<sup>s</sup>  
T.B.A. 4.766 A<sup>s</sup>

21  
LA  
Chas. B. Jr. & Delphia J. McKelvey  
R.R.O. 0.070 A<sup>s</sup>  
T.B.A. 0.141 A<sup>s</sup>

19  
LA

Welze & Catherine Waltman

21  
LA

Chas. B. JR. & Delphia J. McKelvey

PI = 236+13.72  
Δ = 97°-32'-30" Rt.  
D = 5°-00'  
R = 1445.92'  
Ls = 400'  
Lc = 1550.83'  
Ts = 1514.06'  
Es = 601.58  
Os = 10°-00'

Plans Completed	12-5-58
Revisions: Added Limited Access	
Revised Drive Lt. Sta. 214+00	
Indicated access points	2-26-59
Revised Parcels 20-LA & 21-LA	4-15-59
Indicated access Point Lt+Sta. 239+00	4-23-59