

Noah W. & Susan Yoder
Vol. 120 Pg. 272
127 465

NORTH

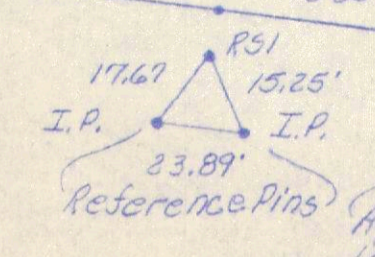
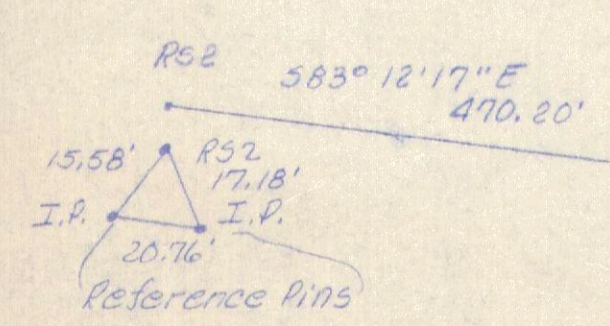
Eli E. and/or
Fannie Rober
Vol. 180 Pg. 411
224 353

Eli E. & Fannie Rober
Vol. 138 Pg. 491
214 553
224 353

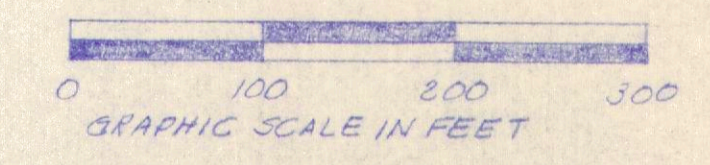
12.748 Acre Tract

6.516 Acre Tract
Eli E. & Fannie Rober
Vol. 138 Pg. 491
214 553
224 353

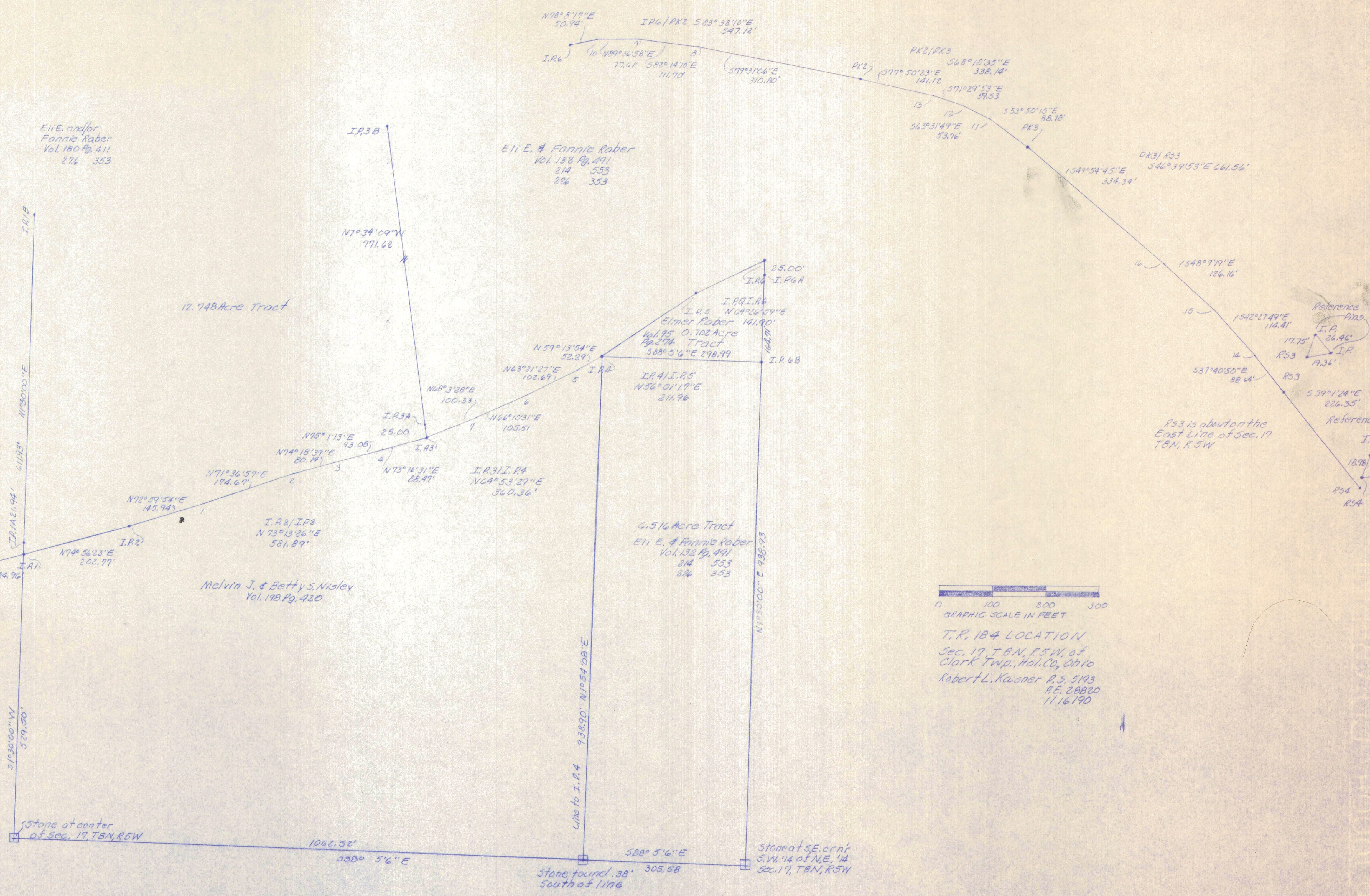
Melvin J. & Betty S. Wisley
Vol. 178 Pg. 420



Approximate location of gas line crossing



T.R. 184 LOCATION
Sec. 17, T8N, R5W, of
Clark Twp., Hol. Co., Oh. 10
Robert L. Kasper R.S. 5193
P.E. 28820
1116190



Stone at center of sec. 17, T8N, R5W

Stone found .38' south of line

Stone at SE. cor. of S.W. 1/4 of NE 1/4 Sec. 17, T8N, R5W

R53 is about on the East Line of Sec. 17 T8N, R5W