

FED. AID DIST. NO.	STATE	FED. AID PROJECT	FISCAL YEAR
10	OHIO	532-H	1931



STATE OF OHIO

S.H.(I.C.H.)342 SEC.B2.
HOLMES CO.

DEPARTMENT OF HIGHWAYS
MILLERSBURG WOOSTER ROAD

I.C.H. NO. 342

SECTION B-2

HOLMES

COUNTY

PRAIRIE TOWNSHIP

JANUARY 1931

The Standard Specifications of the State of Ohio, Division of Highways, in force on date of contract will govern this Improvement

I hereby approve these plans and declare that the making of this improvement will not require the closing to traffic of the highway and a temporary detour will be provided as shown on the plans.

Right of way provided by the State of Ohio.

Approved: Karl Snyder
Date: 1-23-31 Resident District Deputy Director

Approved: B. H. France
Date: 2/28/31 Resident Division Deputy Director

Approved: Edwin Hilley
Date: 3/2/31 Chief Engineer.
Bureau of Construction

Approved: _____
Date. _____ Chief Engineer
Bureau of Maintenance.

Approved: _____
Date. _____ Chief Engineer
Bureau of Bridges

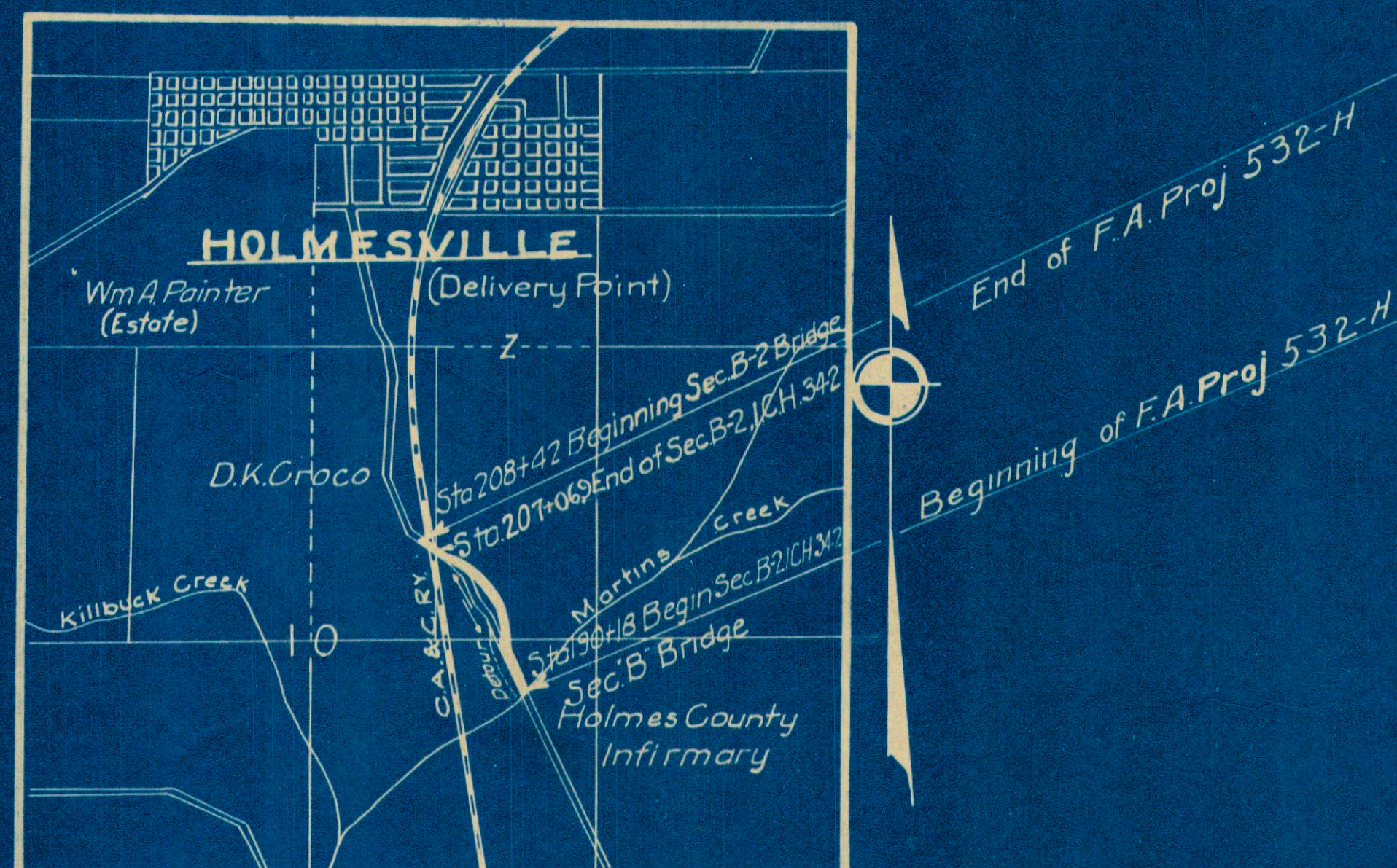
Approved: H. P. Chapman
Date: 2-28-31 Chief Engineer and First Asst. Director

Approved: Old Merrill
Date: 2-28-31 Director of Highways.

Recommended for Approval: _____
Date. _____ District Engineer
Bureau of Public Roads.

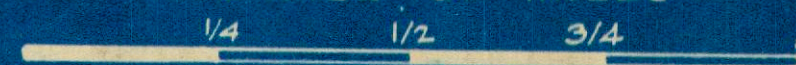
Recommended for Approval: _____
Date. _____ Chief Engineer
Bureau of Public Roads.

Approved: _____
Date. _____ Chief of Bureau



LOCATION PLAN

SCALE OF MILES



PORTION TO BE IMPROVED

CONVENTIONAL SIGNS

State Line	-----
County Line	-----
Township Line	-----
Section Line	-----
Property Line not fenced	-----
Center Line	o-----o
City or Village Line	-----
Fence	-----
Telephone or Telegraph	T T T T
Steam Railroad	-----
Electric Lines	-----
Guard Rail	-----
Drain Pipe-new	-----
Drain Pipe-old	-----

SCALES

Plan	1" = 100'
Profile (Vertical)	1" = 10'
Profile (Horizontal)	1" = 100'
Cross Sections	1" = 5'

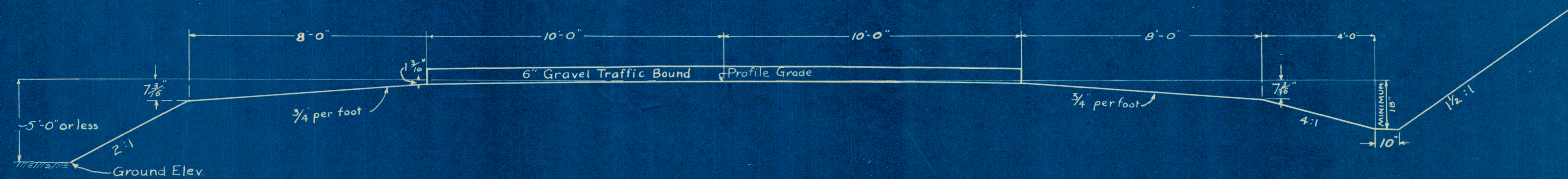
INDEX

Title Page	1
Typical Section	2
Plan & Profile	3
Cross Sections	4-7
Superelevation Tables	8
Summary	8

FED. AID DIST. NO.	STATE	FED. AID PROJECT	FISCAL YEAR
10	OHIO	532-17	1931

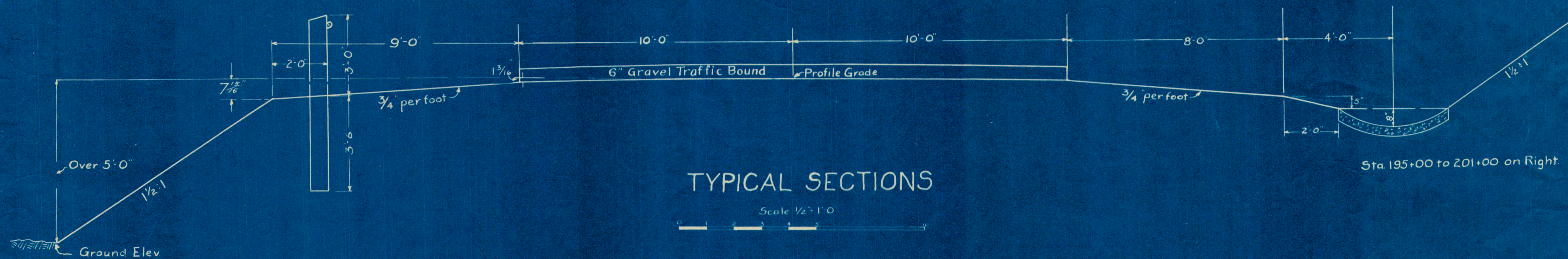


SH (ICH) 342 SEC B-2
HOLMES CO.



The stations between which typical sections are to be constructed are 190+18 to 207+06 1/2

Traffic Bound Material except one inch to be bladed to each side of road by Contractor.



Sta 195+00 to 201+00 on Right.

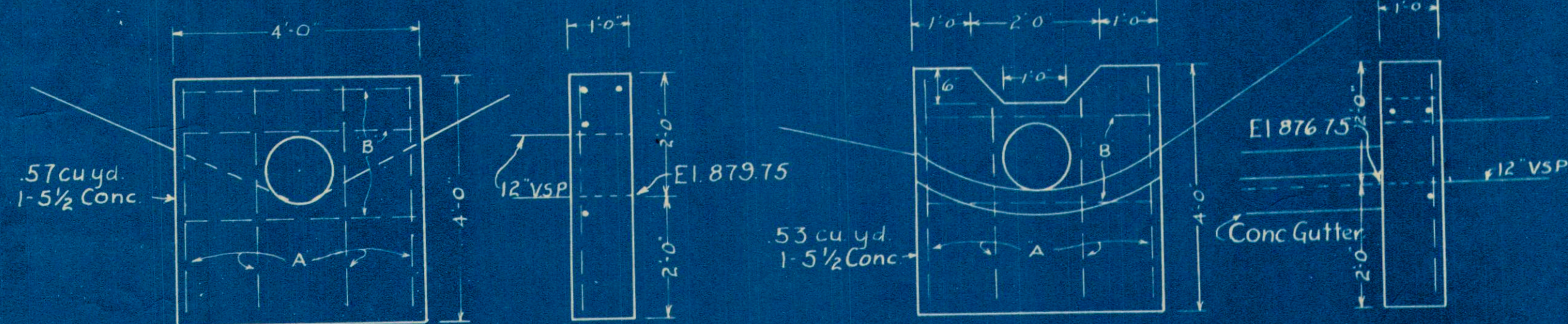
TYPICAL SECTIONS

Scale 1/2" = 1'-0"



STEEL LIST FOR TWO SPECIAL HEADWALLS
6 each 1/2" bars A 3'-6" long weight 14 lbs.
2 " " " B 3'-0" " " " 7 " "
7 " " " C 3'-6" " " " 16 " "

Total 37 lbs

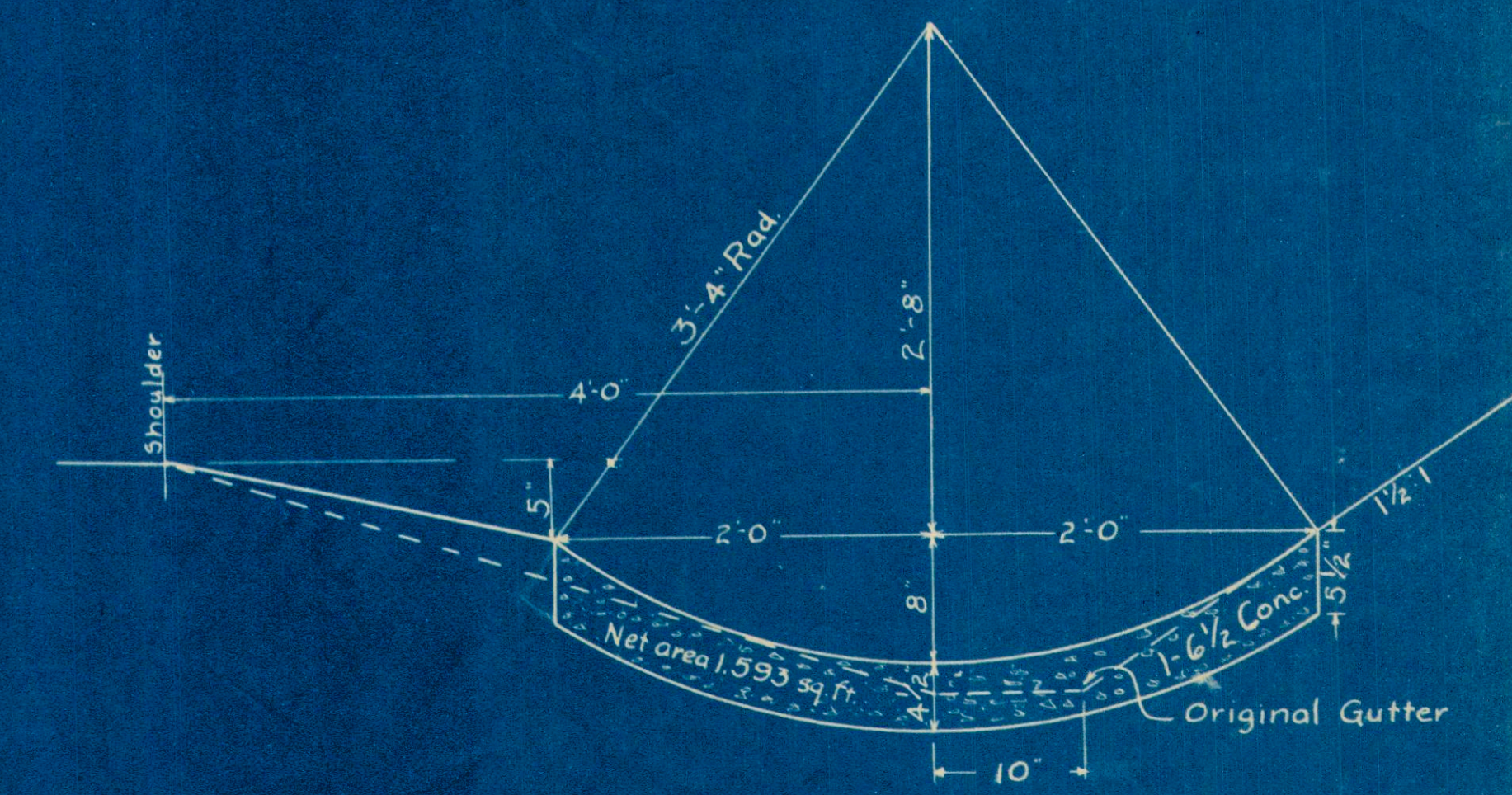


Headwall at inlet
One required at sta 205+50, right side.

Headwall at outlet
One required at sta 201+00 right side.

DETAILS OF HEADWALLS

Scale 1/2" = 1'-0"



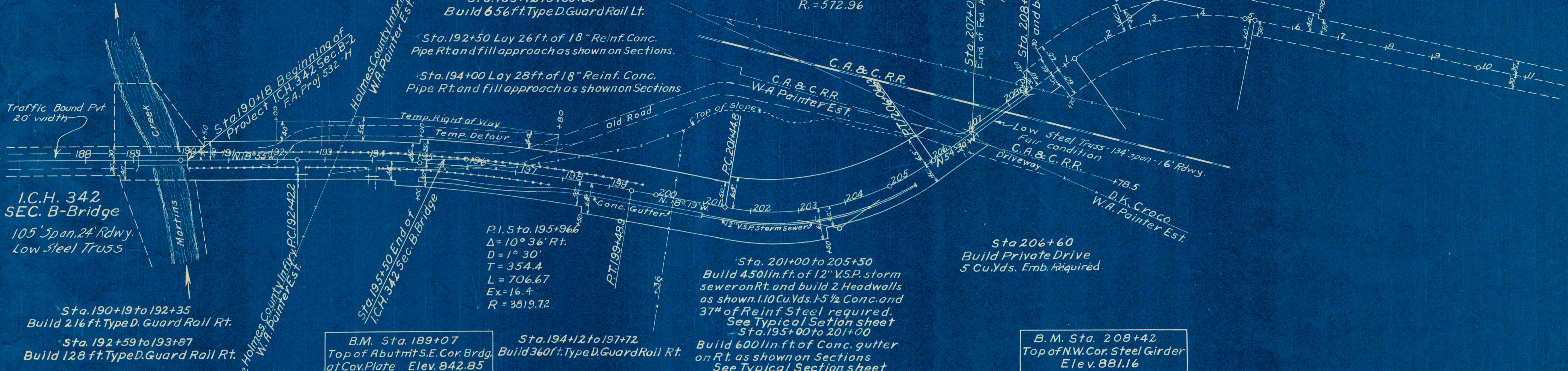
SECTION OF GUTTER PAVING

Use between Stations 195+00 and 201+00, right side.

NOTE

This Improvement does not contemplate Closing the Highway to traffic. The Contractor shall construct, maintain and remove (upon completion of project) a temporary run around detour roadway, with a width of not less than 22 ft. of which not less than 19 ft. shall be smoothly covered with gravel, stone or slag; the approaches shall have a suitable gradient and free from sharp turns, so as to be suitable for 2 lanes of traffic. Right of Way provided by the State.

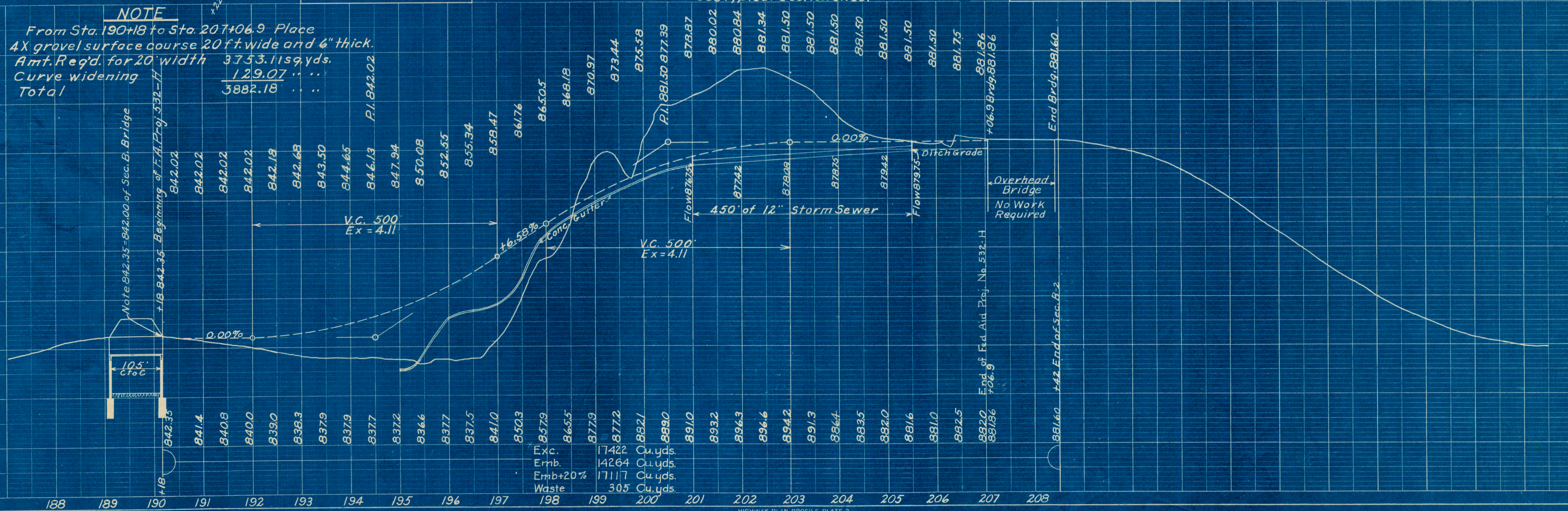
PLAN	SURVEYED	DATE
	PLOTTED	
	CHECKED	
	BY	
	NO.	



NOTE

From Sta. 190+18 to Sta. 207+06.9 Place 4X gravel surface course 20 ft. wide and 4" thick. Amt. Req'd. for 20' width 3753.11 sq. yds. Curve widening 129.07 " " " Total 3882.18 " " "

PROFILE	SURVEYED	DATE
	PLOTTED	
	CHECKED	
	BY	
	NO.	



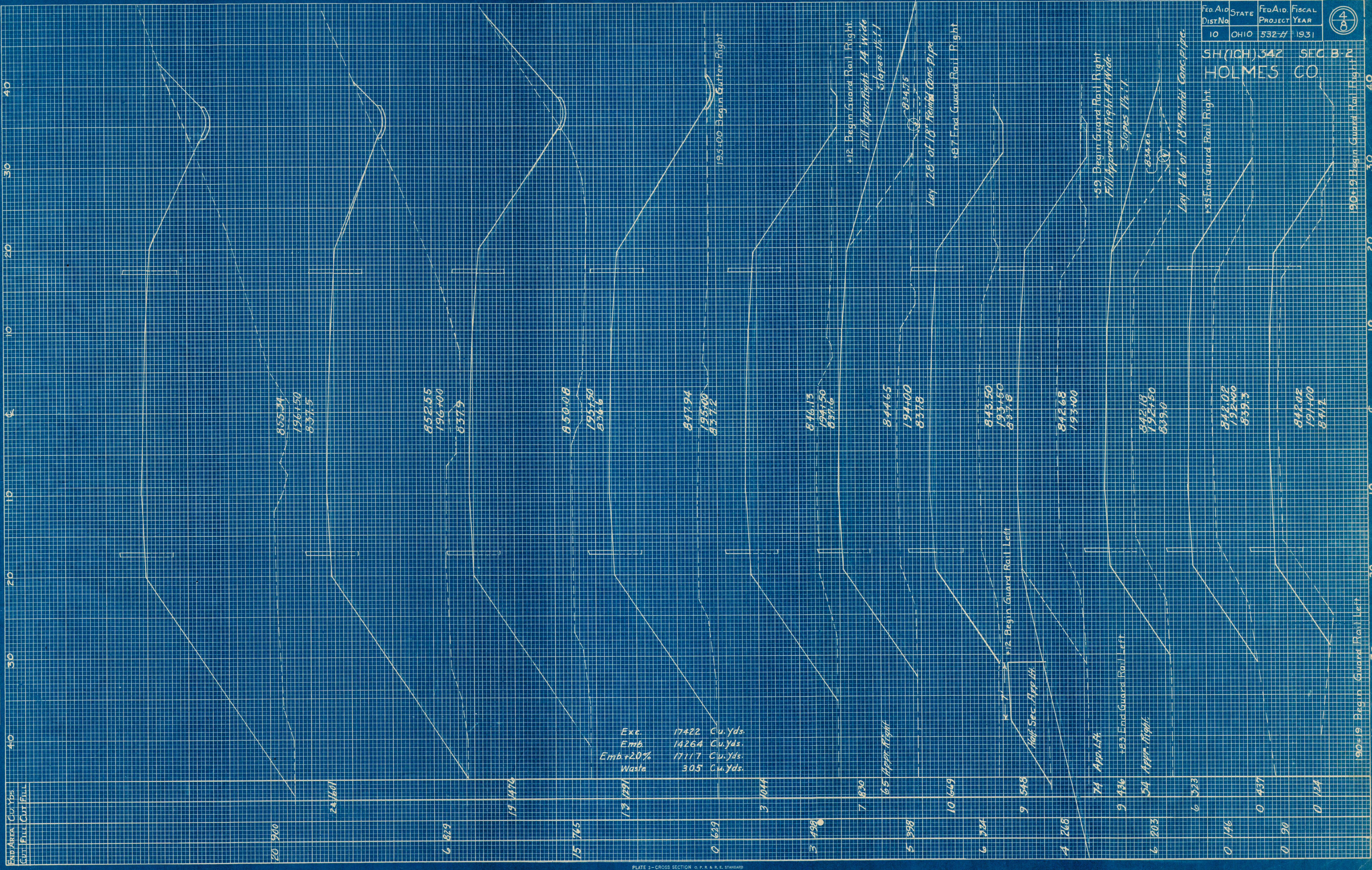
FINAL SURVEY PLOTTED AREAS CHECKED

ORIGINAL SURVEY PLOTTED TEMPLATE AREAS CHECKED

BY DATE

BY DATE

Exc. 17422 Cu. Yds.
Emb. 14264 Cu. Yds.
Emb.+20% 17117 Cu. Yds.
Waste 305 Cu. Yds.



FED. AID DIST. NO.	STATE	FED. AID PROJECT	FISCAL YEAR
10	OHIO	532-7	1931

SH (ICH) 547 SEC B-2
HOLMES CO

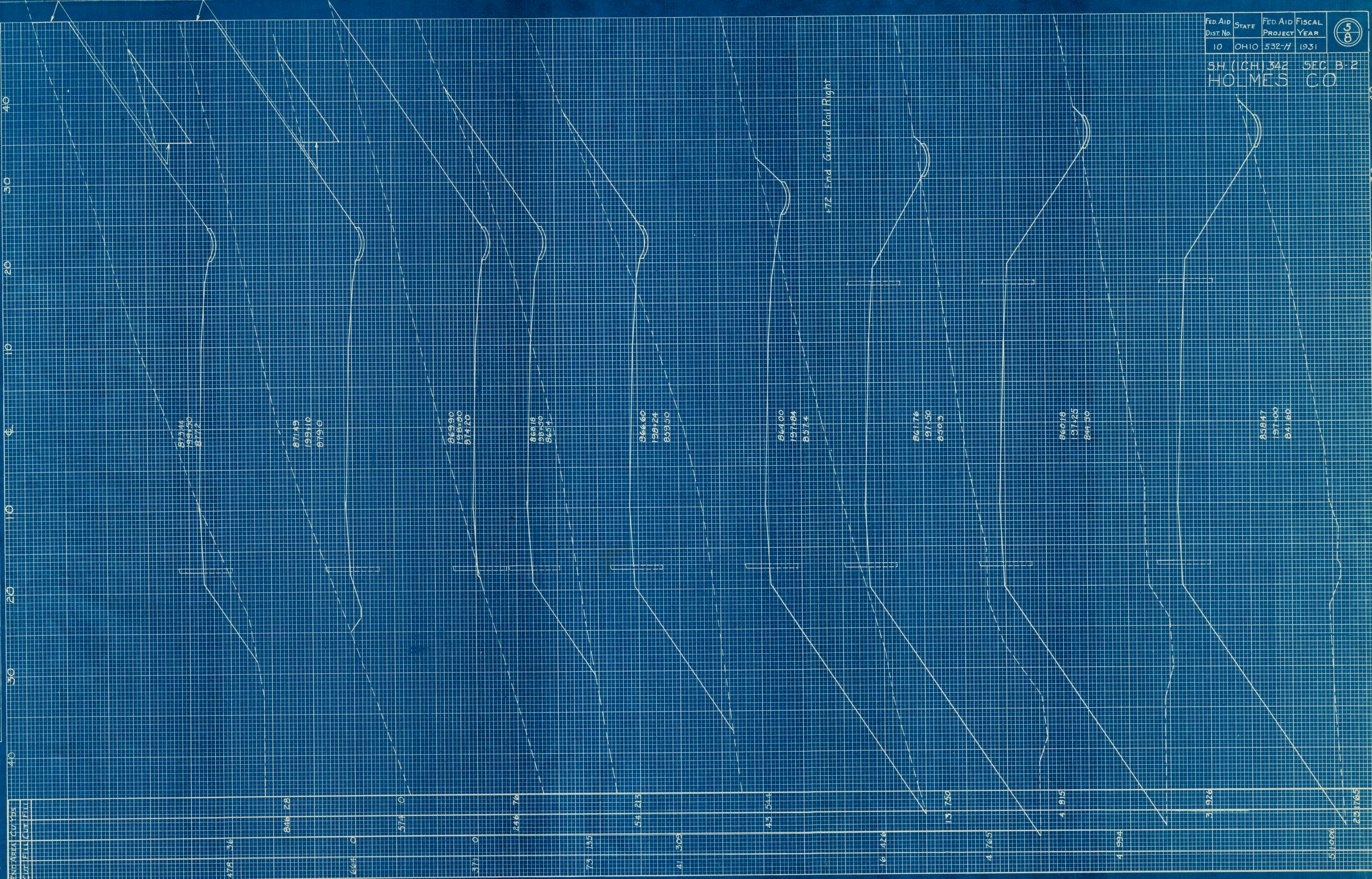
48

FINAL SURVEY
 NOTE BOOK NO. _____
 SURVEYED PLOTTED
 1951-50
 1951-50
 BY _____ DATE _____
 AREAS CHECKED.

ORIGINAL SURVEY
 NOTE BOOK NO. _____
 SURVEYED PLOTTED
 1951-50
 1951-50
 BY _____ DATE _____
 AREAS CHECKED.

FED. AID DIST. No.	STATE	FED. AID PROJECT	FISCAL YEAR	5 8
10	OHIO	532-H	1931	

SH. (C.H.) 342 SEC. B-2
 HOLMES CO



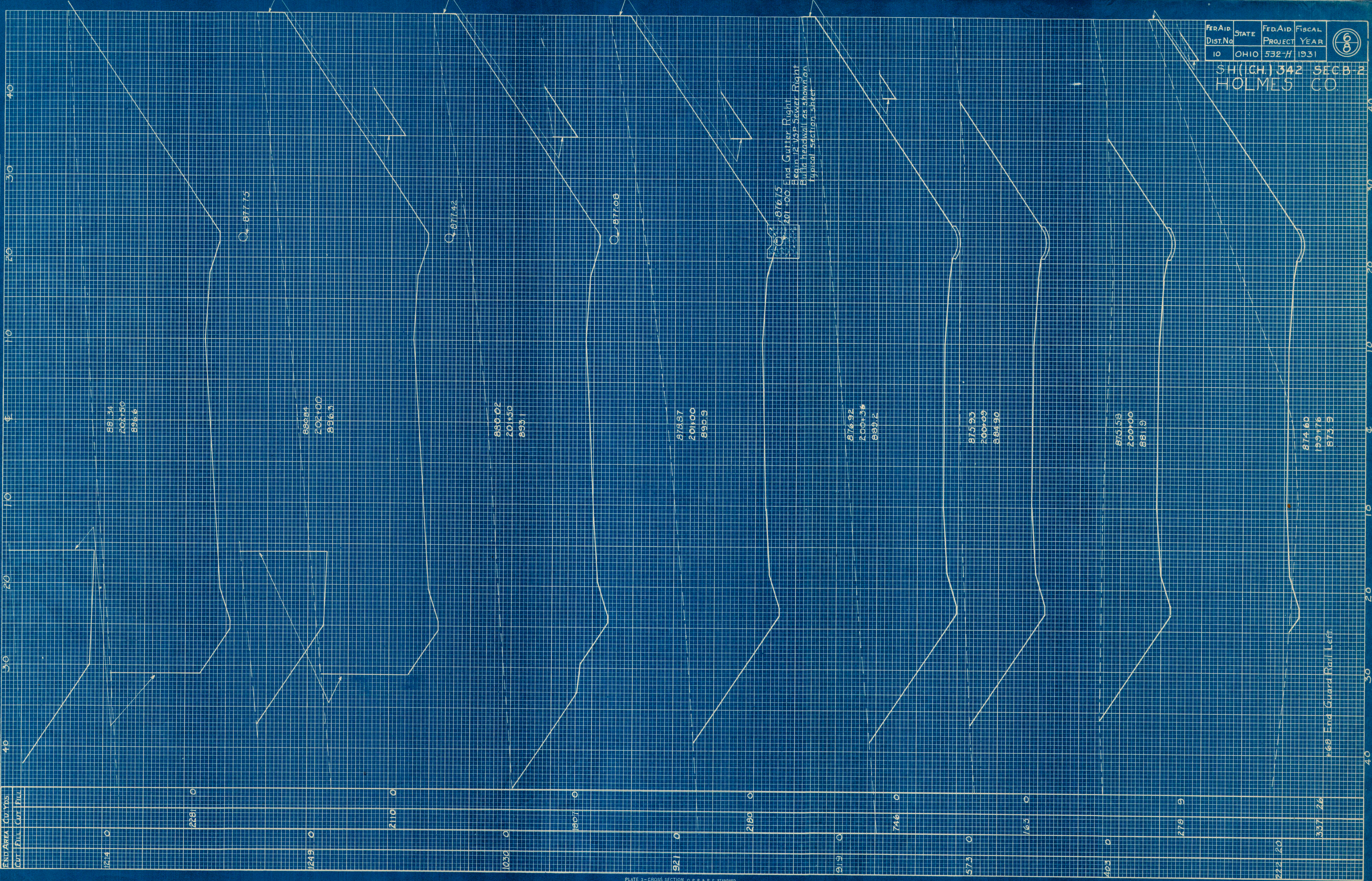
FINAL SURVEY NO. _____
 SURVEYED BY _____
 PLOTTED BY _____
 TEMPLATE NO. _____
 AREAS CHECKED _____

ORIGINAL SURVEY NO. _____
 SURVEYED BY _____
 PLOTTED BY _____
 TEMPLATE NO. _____
 AREAS CHECKED _____

AREA	Cut	Fill	Cur	Fill
1214	0			
2281	0			
1249	0			
2110	0			
1030	0			
1907	0			
921	0			
2186	0			
919	0			
746	0			
573	0			
143	0			
403	0			
278	9			
222	20			
337	26			

FED. AID DIST. NO.	STATE	FED. AID PROJECT	FISCAL YEAR	68
10	OHIO	532-H	1931	

SH (IGH.) 342 SEC B-2
 HOLMES CO.



CUT
FILL
END AREA
CU YDS.

0 10
12 0
27 2
24 9
36 15
29 22
6 32
11 25
39 29
46 6
127 0
396 0
796 0
1104 0
1682 0
2069 0

5 Appr. Pt.

9 6
22 32

17 53

39 29

46 6

127 0

396 0

796 0

1104 0

1682 0

2069 0

881.50
2024.60
882.4

881.50
2024.40
882.7

881.50
2024.32
882.7

881.50
2024.00
881.0

881.50
2024.30
881.6

881.50
2024.00
882.1

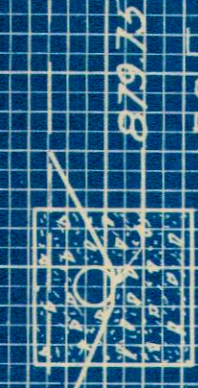
881.50
2024.30
883.5

881.50
2024.00
886.4

881.50
2024.50
881.2

881.50
2024.00
884.2

160 Fill Appr. Right Survey required



30' and 12" VSP Sawyer Right.
Build road wall as shown on
typical section sheet

SUPERELEVATION TABLES

D-10°30' Right

Super	Width	Left	Station	Profile	Right	Width	Super
0.00	10.00	847.92	191+42.2	842.02	841.92	10.00	0.00
0.03		847.95	+50	842.02	841.92		0.03
0.12		847.97	+75	842.02	841.92		0.12
0.21		847.99	+100	842.02	841.92		0.21
0.30		847.99	+125	842.02	841.92		0.30
0.39		847.97	+150	842.02	841.92		0.39
0.48		847.97	+175	842.02	841.92		0.48
0.57		847.92	+200	842.02	841.92		0.57
		847.81	+225	842.02	841.92		
		847.69	+250	842.02	841.92		
		847.56	+275	842.02	841.92		
		847.42	+300	842.02	841.92		
		847.27	+325	842.02	841.92		
		847.12	+350	842.02	841.92		
		846.97	+375	842.02	841.92		
		846.81	+400	842.02	841.92		
		846.64	+425	842.02	841.92		
		846.47	+450	842.02	841.92		
		846.29	+475	842.02	841.92		
		846.11	+500	842.02	841.92		
		845.92	+525	842.02	841.92		
		845.73	+550	842.02	841.92		
		845.53	+575	842.02	841.92		
		845.33	+600	842.02	841.92		
		845.12	+625	842.02	841.92		
		844.91	+650	842.02	841.92		
		844.69	+675	842.02	841.92		
		844.47	+700	842.02	841.92		
		844.24	+725	842.02	841.92		
		844.01	+750	842.02	841.92		
		843.77	+775	842.02	841.92		
		843.53	+800	842.02	841.92		
		843.28	+825	842.02	841.92		
		843.03	+850	842.02	841.92		
		842.77	+875	842.02	841.92		
		842.51	+900	842.02	841.92		
		842.24	+925	842.02	841.92		
		841.97	+950	842.02	841.92		
		841.69	+975	842.02	841.92		
		841.41	+1000	842.02	841.92		
		841.12	+1025	842.02	841.92		
		840.83	+1050	842.02	841.92		
		840.53	+1075	842.02	841.92		
		840.23	+1100	842.02	841.92		
		840.00	+1125	842.02	841.92		
		839.75	+1150	842.02	841.92		
		839.50	+1175	842.02	841.92		
		839.25	+1200	842.02	841.92		
		839.00	+1225	842.02	841.92		
		838.75	+1250	842.02	841.92		
		838.50	+1275	842.02	841.92		
		838.25	+1300	842.02	841.92		
		838.00	+1325	842.02	841.92		
		837.75	+1350	842.02	841.92		
		837.50	+1375	842.02	841.92		
		837.25	+1400	842.02	841.92		
		837.00	+1425	842.02	841.92		
		836.75	+1450	842.02	841.92		
		836.50	+1475	842.02	841.92		
		836.25	+1500	842.02	841.92		
		836.00	+1525	842.02	841.92		
		835.75	+1550	842.02	841.92		
		835.50	+1575	842.02	841.92		
		835.25	+1600	842.02	841.92		
		835.00	+1625	842.02	841.92		
		834.75	+1650	842.02	841.92		
		834.50	+1675	842.02	841.92		
		834.25	+1700	842.02	841.92		
		834.00	+1725	842.02	841.92		
		833.75	+1750	842.02	841.92		
		833.50	+1775	842.02	841.92		
		833.25	+1800	842.02	841.92		
		833.00	+1825	842.02	841.92		
		832.75	+1850	842.02	841.92		
		832.50	+1875	842.02	841.92		
		832.25	+1900	842.02	841.92		
		832.00	+1925	842.02	841.92		
		831.75	+1950	842.02	841.92		
		831.50	+1975	842.02	841.92		
		831.25	+2000	842.02	841.92		
		831.00	+2025	842.02	841.92		
		830.75	+2050	842.02	841.92		
		830.50	+2075	842.02	841.92		
		830.25	+2100	842.02	841.92		
		830.00	+2125	842.02	841.92		
		829.75	+2150	842.02	841.92		
		829.50	+2175	842.02	841.92		
		829.25	+2200	842.02	841.92		
		829.00	+2225	842.02	841.92		
		828.75	+2250	842.02	841.92		
		828.50	+2275	842.02	841.92		
		828.25	+2300	842.02	841.92		
		828.00	+2325	842.02	841.92		
		827.75	+2350	842.02	841.92		
		827.50	+2375	842.02	841.92		
		827.25	+2400	842.02	841.92		
		827.00	+2425	842.02	841.92		
		826.75	+2450	842.02	841.92		
		826.50	+2475	842.02	841.92		
		826.25	+2500	842.02	841.92		
		826.00	+2525	842.02	841.92		
		825.75	+2550	842.02	841.92		
		825.50	+2575	842.02	841.92		
		825.25	+2600	842.02	841.92		
		825.00	+2625	842.02	841.92		
		824.75	+2650	842.02	841.92		
		824.50	+2675	842.02	841.92		
		824.25	+2700	842.02	841.92		
		824.00	+2725	842.02	841.92		
		823.75	+2750	842.02	841.92		
		823.50	+2775	842.02	841.92		
		823.25	+2800	842.02	841.92		
		823.00	+2825	842.02	841.92		
		822.75	+2850	842.02	841.92		
		822.50	+2875	842.02	841.92		
		822.25	+2900	842.02	841.92		
		822.00	+2925	842.02	841.92		
		821.75	+2950	842.02	841.92		
		821.50	+2975	842.02	841.92		
		821.25	+3000	842.02	841.92		
		821.00	+3025	842.02	841.92		
		820.75	+3050	842.02	841.92		
		820.50	+3075	842.02	841.92		
		820.25	+3100	842.02	841.92		
		820.00	+3125	842.02	841.92		
		819.75	+3150	842.02	841.92		
		819.50	+3175	842.02	841.92		
		819.25	+3200	842.02	841.92		
		819.00	+3225	842.02	841.92		
		818.75	+3250	842.02	841.92		
		818.50	+3275	842.02	841.92		
		818.25	+3300	842.02	841.92		
		818.00	+3325	842.02	841.92		
		817.75	+3350	842.02	841.92		
		817.50	+3375	842.02	841.92		
		817.25	+3400	842.02	841.92		
		817.00	+3425	842.02	841.92		
		816.75	+3450	842.02	841.92		
		816.50	+3475	842.02	841.92		
		816.25	+3500	842.02	841.92		
		816.00	+3525	842.02	841.92		
		815.75	+3550	842.02	841.92		
		815.50	+3575	842.02	841.92		
		815.25	+3600	842.02	841.92		
		815.00	+3625	842.02	841.92		
		814.75	+3650	842.02	841.92		
		814.50	+3675	842.02	841.92		
		814.25	+3700	842.02	841.92		
		814.00	+3725	842.02	841.92		
		813.75	+3750	842.02	841.92		
		813.50	+3775	842.02	841.92		
		813.25	+3800	842.02	841.92		
		813.00	+3825	842.02	841.92		
		812.75	+3850	842.02	841.92		
		812.50	+3875	842.02	841.92		
		812.25	+3900	842.02	841.92		
		812.00	+3925	842.02	841.92		
		811.75	+3950	842.02	841.92		
		811.50	+3975	842.02	841.92		
		811.25	+4000	842.02	841.92		
		811.00	+4025	842.02	841.92		
		810.75	+4050	842.02	841.92		
		810.50	+4075	842.02	841.92		
		810.25	+4100	842.02	841.92		
		810.00	+4125	842.02	841.92		
		809.75	+4150	842.02	841.92		
		809.50	+4175	842.02	841.92		
		809.25	+4200	842.02	841.92		
		809.00	+4225	842.02	841.92		
		808.75	+4250	842.02	841.92		
		808.50	+4275	842.02	841.92		
		808.25	+4300	842.02	841.92		
		808.00	+4325	842.02	841.92		
		807.75	+4350	842.02	841.92		
		807.50	+4375	842.02	841.92		
		807.25	+4400	842.02	841.92		
		807.00	+4425	842.02	841.92		
		806.75	+4450	842.02	841.92		
		806.50	+4475	842.02	841.92		
		806.25	+4500	842.02	841.92		
		806.00	+4525	842.02	841.92		
		805.75	+4550	842.02	841.92		
		805.50	+4575	842.02	841.92		
		805.25	+4600	842.02	841.92		
		805.00	+4625	842.02	841.92		
		804.75	+4650	842.02	841.92		
		804.50	+4675	842.02	841.92		
		804.25	+4700	842.02	841.92		
		804.00	+4725	842.02	841.92		
		803.75	+475				