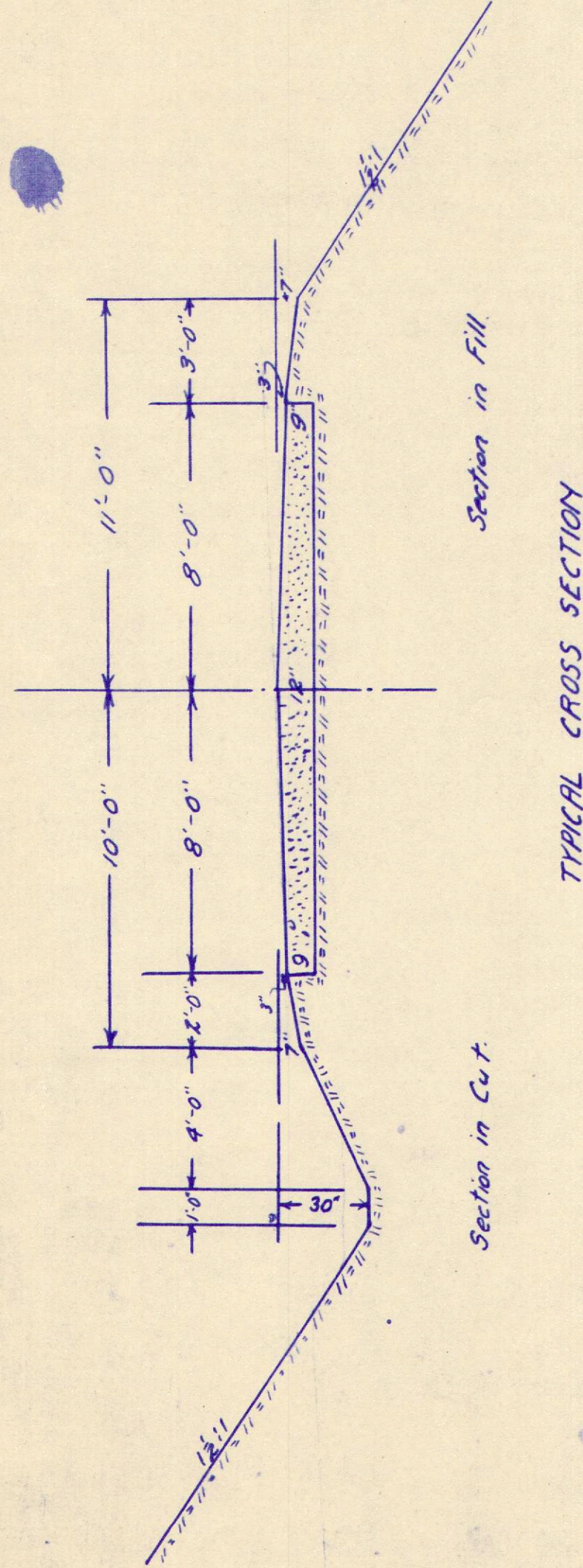
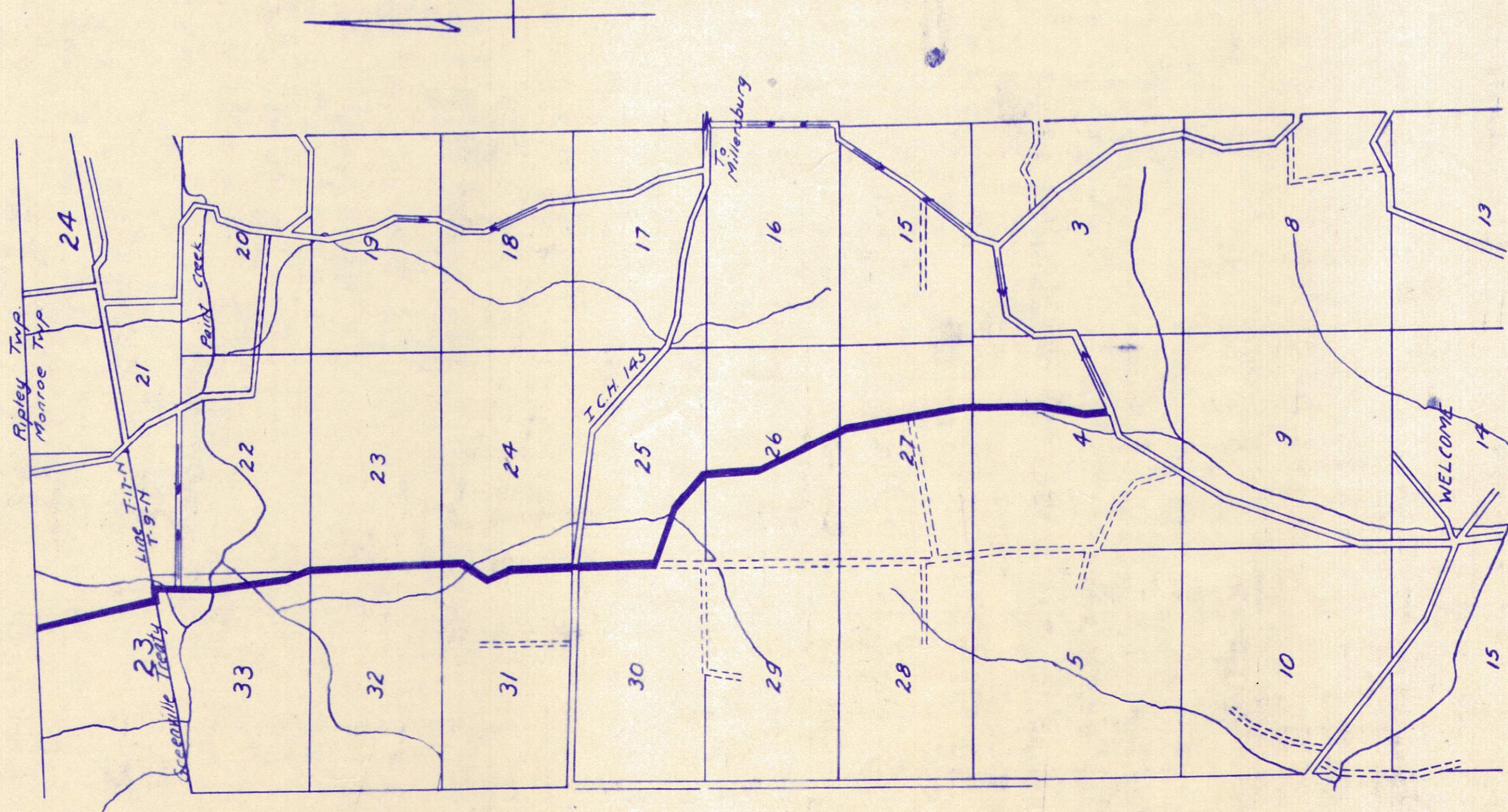


SR 60 M-35

HOLMES COUNTY HIGHWAY
 SEC. C. KILLBUCK - SHREVE ROAD
 COUNTY ROAD N^o 311+326 RESOLUTION
 MONROE TOWNSHIP



TYPICAL CROSS SECTION



LOCATION PLAN
 Scale 4" = 1 mile.
 Portion to be Improved
 Detour shown thus: → ←

Roadway Quantities
 23932 cu.yds. excavation not classified
 487 cu.yds. borrow fill Sta 48-55
 14593 ft. finishing slopes and ditches
 80 ft. 5" v.s. pipe underdrain gravel cover
 60 ft. 12" v.s. pipe in place
 48 " 10" v.s. pipe taken up and relaid
 36 " 4" " " underdrain gravel cover
 1.3 cu.yd. 1-2-4 concrete in place
 30 pounds steel
 16 ft. corrugated pipe 10"
 clearing and grubbing roadway
PAVEMENT Quantities
 20143 sq.yds. gravel pavement 12" & 8" sides
 33645 " " " " 12" & 12" "
 80 cu.yds. gravel for approaches
 600 cu.yds. stone sub-base.

51 cy. Channel Exc. Sta. 28+00 Left.

I hereby approve these plans and declare that the making of this improvement will require the closing of the highway to traffic and that detours will be provided as shown on plans.

Date: _____ Approved: _____
 County Surveyor

We, the Commissioners of Holmes County, Ohio, hereby approve these plans and certify that the right of way is available for the construction of the above highway.

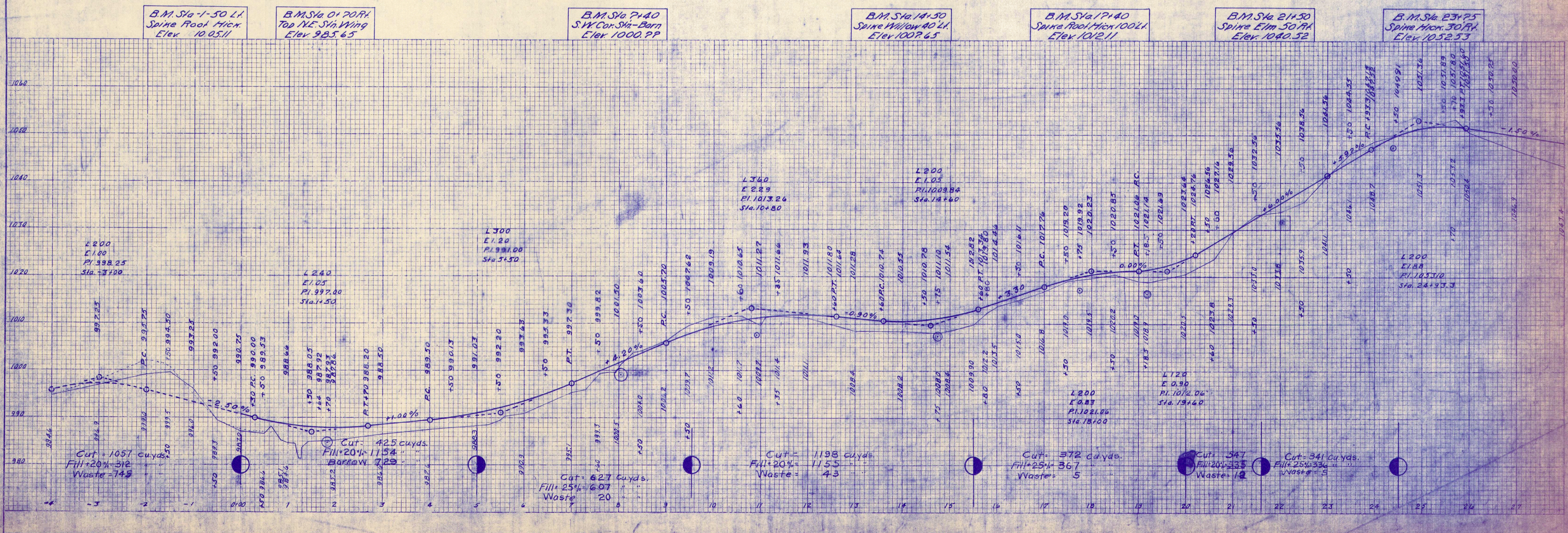
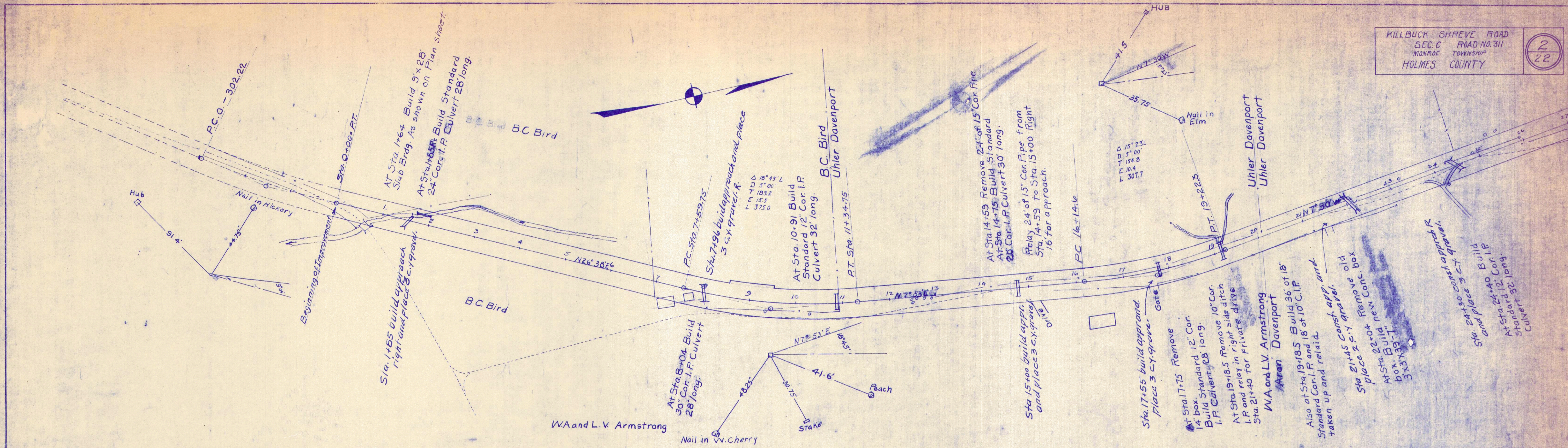
Signed: _____
 Date: _____
 Commissioners of Holmes County, Ohio

PLAN

DATE	
BY	
CHECKED	
APPROVED	
NOTE BOOK	
ALIGNMENT CHECKED	
PT. OF WAY CHECKED	
NO.	

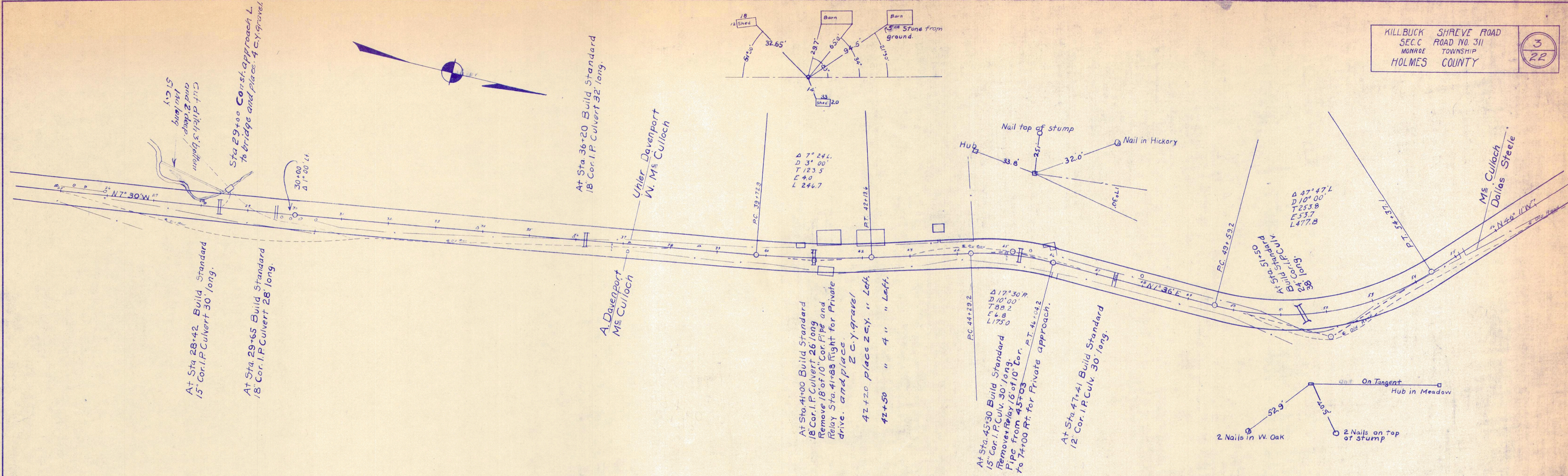
PROFILE

DATE	
BY	
CHECKED	
APPROVED	
NOTE BOOK	
GRADES CHECKED	
STRUCTURE NOTATIONS CHECKED	
NO.	



FINAL SURVEY	DATE
NO.	
BY	
REVISIONS	
PLOTTED	
TEMPLATE	
NOTE BOOK	
AREAS CHECKED	

ORIGINAL SURVEY	DATE
NO.	
BY	
REVISIONS	
PLOTTED	
TEMPLATE	
NOTE BOOK	
AREAS CHECKED	



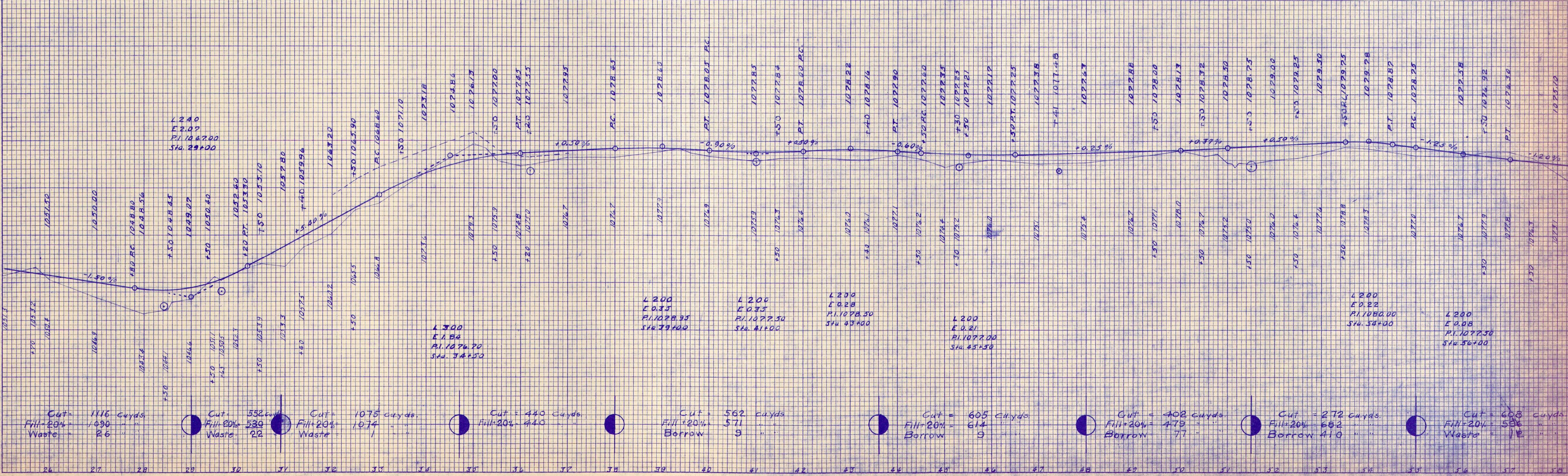
B.M. Sta 30+40
 Spike Cor. Fence Post 30' RH
 Elev. 1061.17

B.M. Sta 37+40
 Nail Head Hick. 50' LA
 Elev. 1072.29

B.M. Sta 43+65
 NE. Cor. End Conc. Walk
 Elev. 1076.29

B.M. Sta 47
 Spike Hick 30' L
 Elev. 1072.79

B.M. Sta 51+60
 R.P. Spikes 36 Oak RH
 Elev. 1081.09

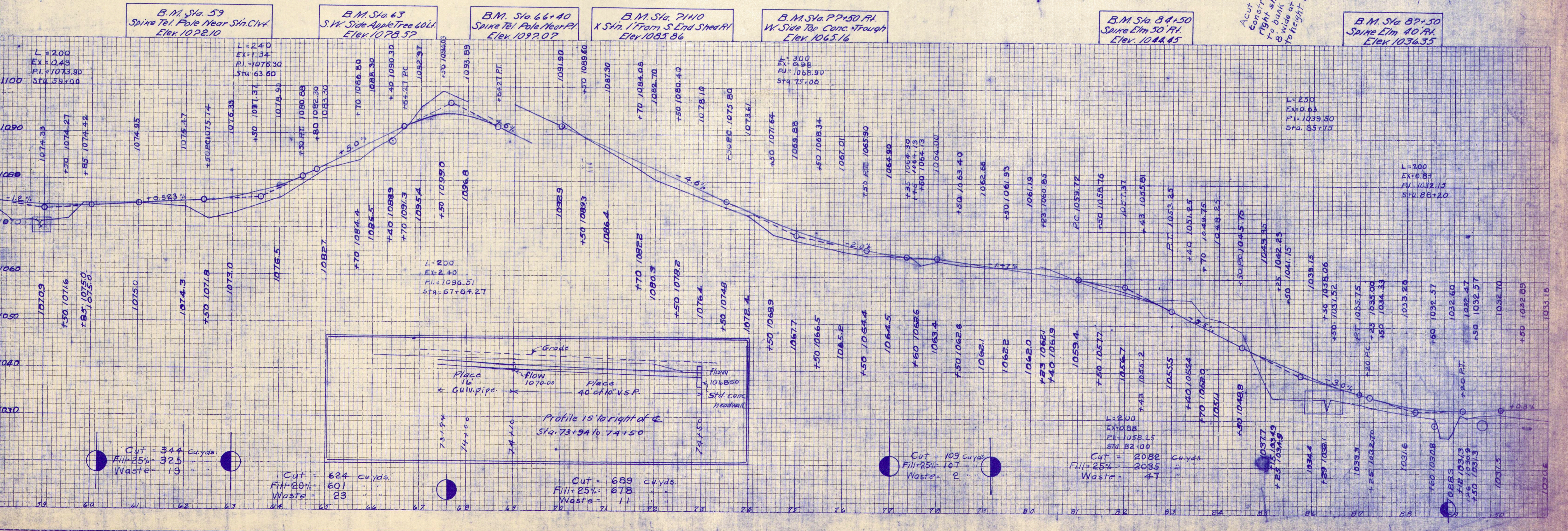
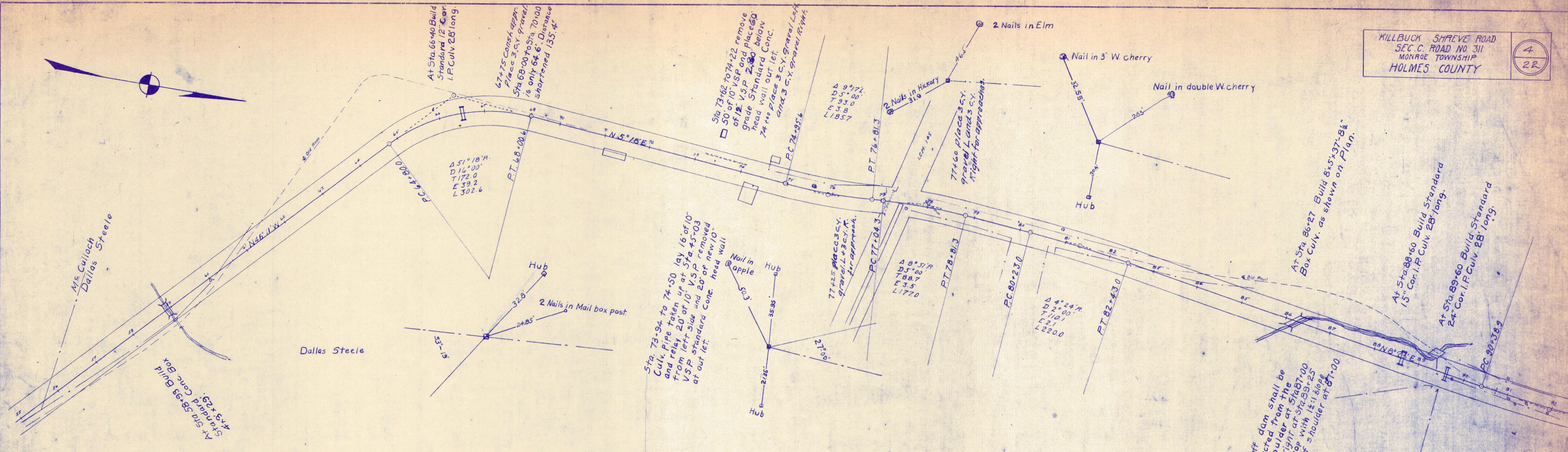


Cut = 1416 cu yds. Fill = 20% = 1490 Waste = 26	Cut = 556 cu yds. Fill = 20% = 580 Waste = 22	Cut = 1075 cu yds. Fill = 20% = 1074 Waste = 1	Cut = 440 cu yds. Fill = 20% = 440 Waste = 0	Cut = 562 cu yds. Fill = 20% = 571 Borrow = 9	Cut = 605 cu yds. Fill = 20% = 614 Borrow = 9	Cut = 408 cu yds. Fill = 20% = 479 Borrow = 77	Cut = 272 cu yds. Fill = 20% = 682 Borrow = 410	Cut = 608 cu yds. Fill = 20% = 596 Waste = 12
---	---	--	--	---	---	--	---	---

PLATE 4 - CROSS SECTION OF R.R. & R.R. STATIONS
 KOPPEL & EMBEL CO., NEW YORK

DATE	
BY	
SURVEYED	
NOTE BOOK	
ALIGNED CHECKED	
RT. OF WAY CHECKED	
NO.	

DATE	
BY	
PROFILER	
NOTE BOOK	
ALIGNED CHECKED	
CONSTRUCTION NOTES BY CIV. ENGR.	
NO.	

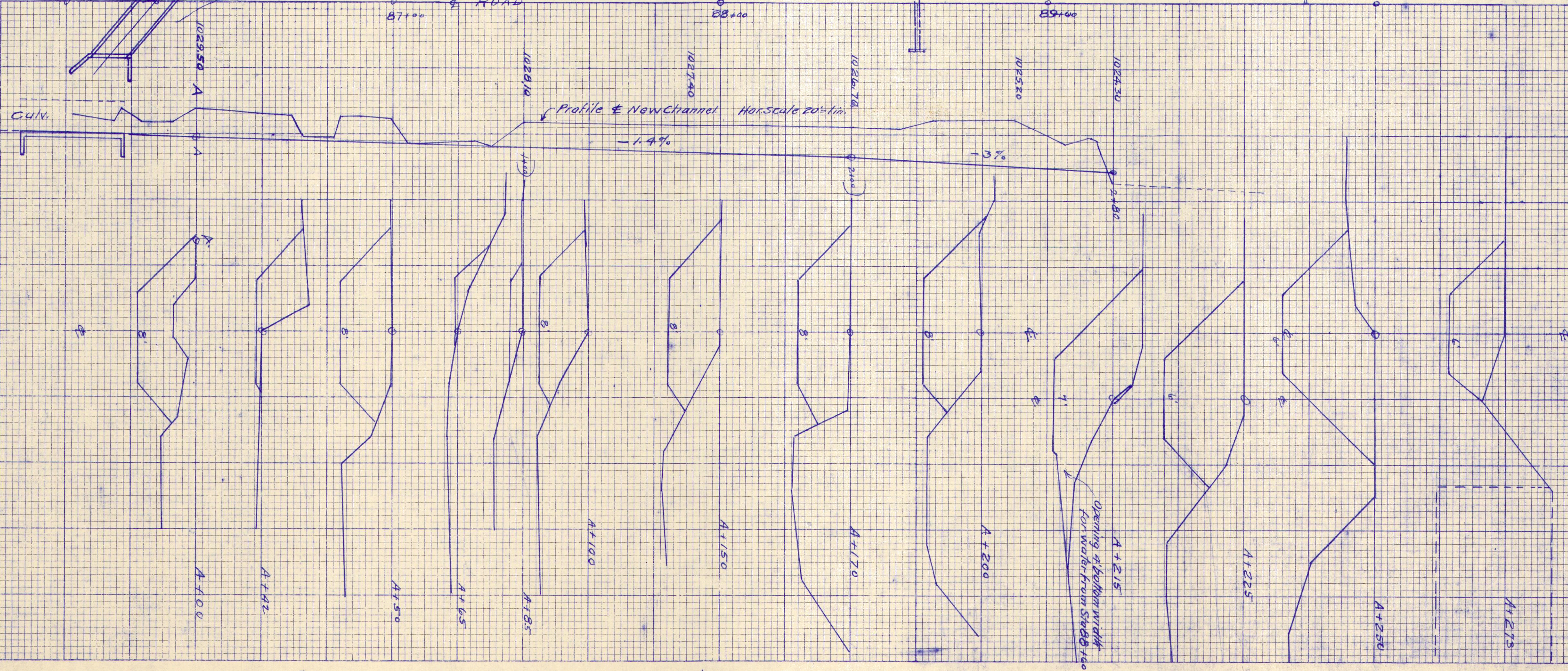
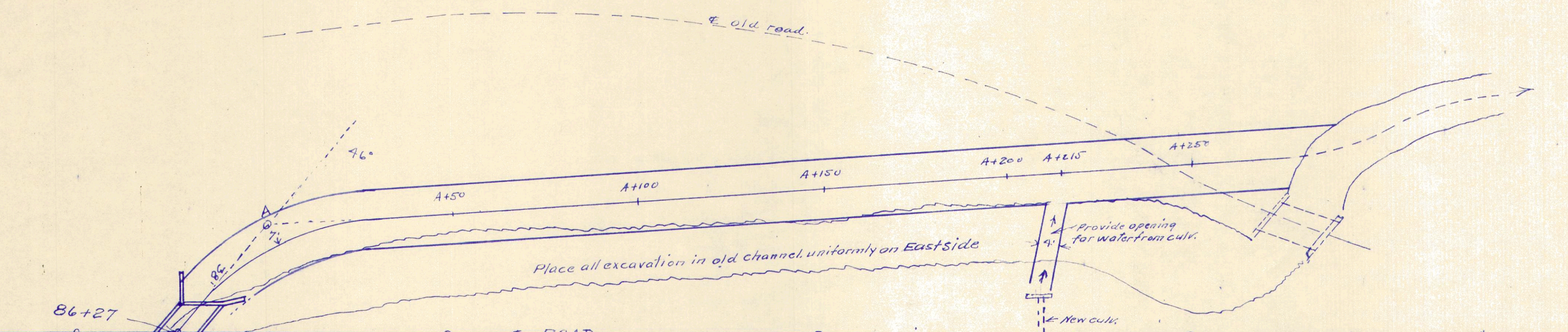


PLAN FOR NEW CHANNEL
 STA. 86+27

PLAN 20' = 1 inch. Profile Hor. 20' = 1 in. Ver. 10' = 1 in.
 EXCV. 422 Cu. yds.

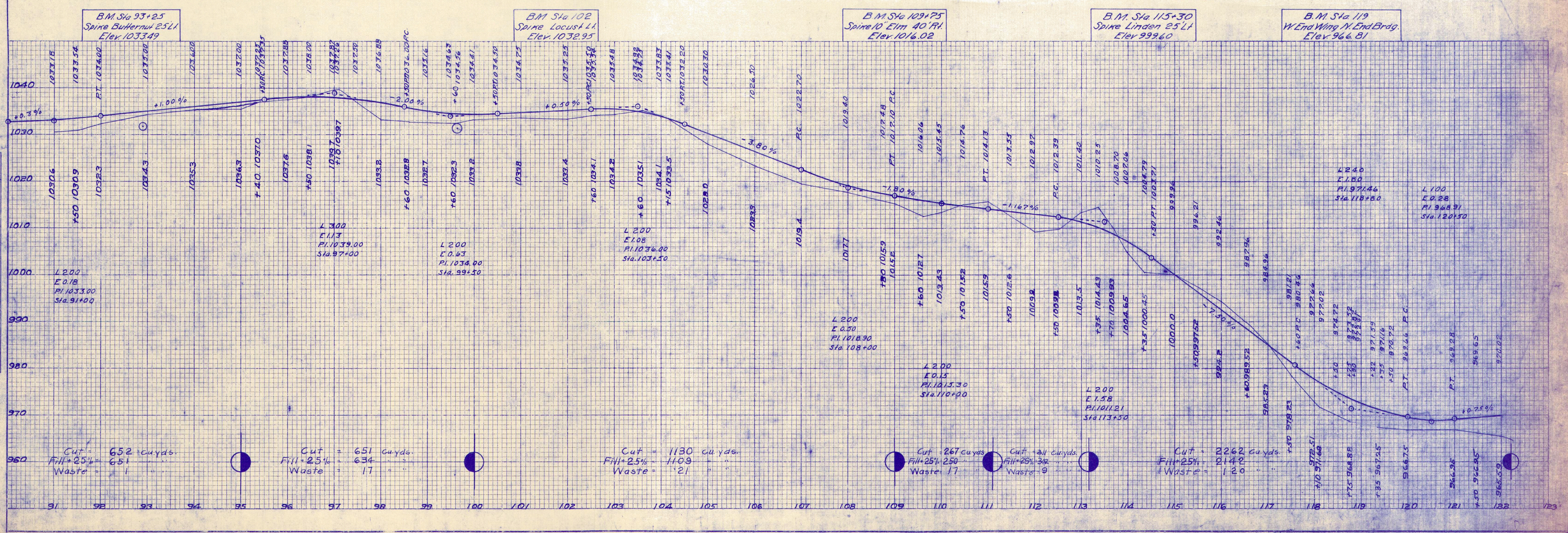
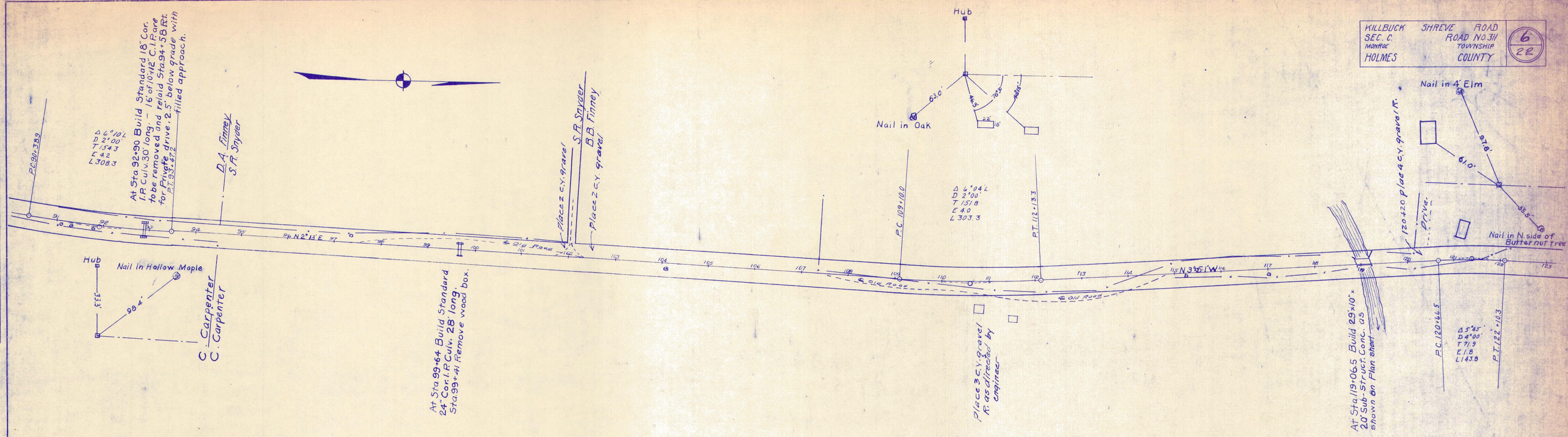
PLAN	SURVEYED	DATE
	PLOTTED	
	NOTE BOOK	
	NO.	
	ALIGNMENT CHECKED	
	BY	
	ET. OF WAY CHECKED	

PROFILE	SURVEYED	DATE
	PLOTTED	
	NOTE BOOK	
	NO.	
	GRADES CHECKED	
	BY	
	STRUCTURE STATUS C. NO.	



PLAN	
REVISIONS	DATE
NO.	
NOTE BOOK	
ALIGNMENT CHECKED	
RT. OF WAY CHECKED	

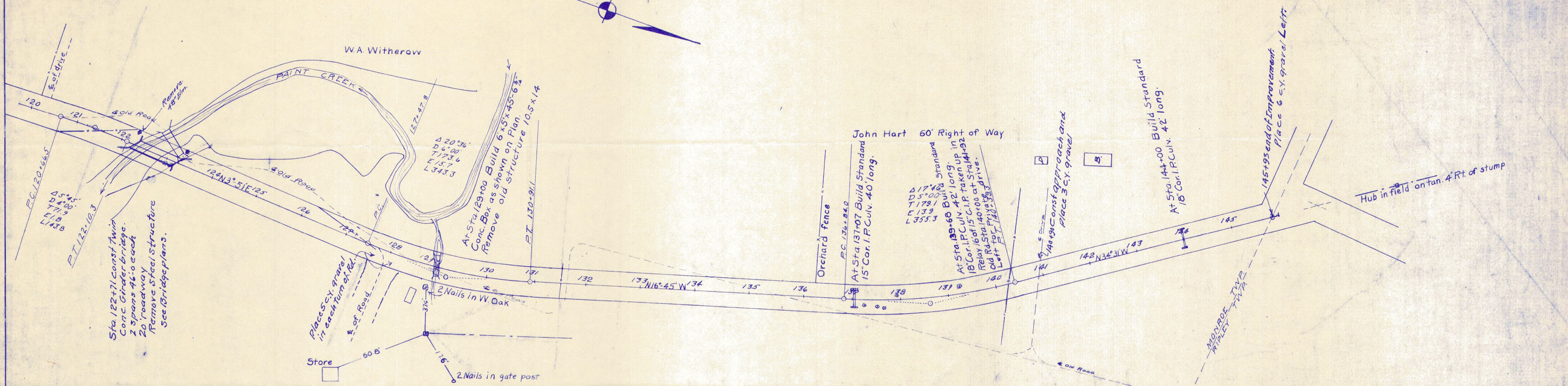
PROFILE	
REVISIONS	DATE
NO.	
NOTE BOOK	
GRADES CHECKED	
B. M. NOTED	
STRUCTURE NOTATIONS CHECKED	



Cut = 652 cu yds. Fill + 25% = 651 Waste = 1	Cut = 651 cu yds. Fill + 25% = 634 Waste = 17	Cut = 1130 cu yds. Fill + 25% = 1109 Waste = 21	Cut = 267 cu yds. Fill + 25% = 250 Waste = 17	Cut = 311 cu yds. Fill + 25% = 312 Waste = 9	Cut = 2262 cu yds. Fill + 25% = 2142 Waste = 120
--	---	---	---	--	--

PLAN	SURVEYED	DATE
	PLOTTED	
	NOTE BOOK ALIGNMENT CHECKED	
	NO. OF WAY CHECKED	

PROFILE	SURVEYED	DATE
	PLOTTED	
	NOTE BOOK GRADES CHECKED	
	STRUCTURE NOTATIONS CH. NO.	



B.M. Sta. 120+95 Top N. Side Wall Conc. Slab Elev. 969.95
 B.M. Sta. 122+50 S. End SW Wing Brdg. Elev. 970.32
 B.M. Sta. 128+50 PI Front Edge Base Gas. Sta. Elev. 975.18
 B.M. Sta. 133 Spine 18 Maple 80 L.H. Elev. 1012.24
 B.M. Sta. 137+60 Spine Apple 50 L.H. Elev. 1014.74
 B.M. Sta. 141+40 Spine Walnut 100 L.H. Elev. 1026.74
 B.M. Sta. 146 L.H. 2 Spines Tel. Pole Elev. 1022.90

