

# VILLAGE OF GLENMONT RICHLAND TWP.

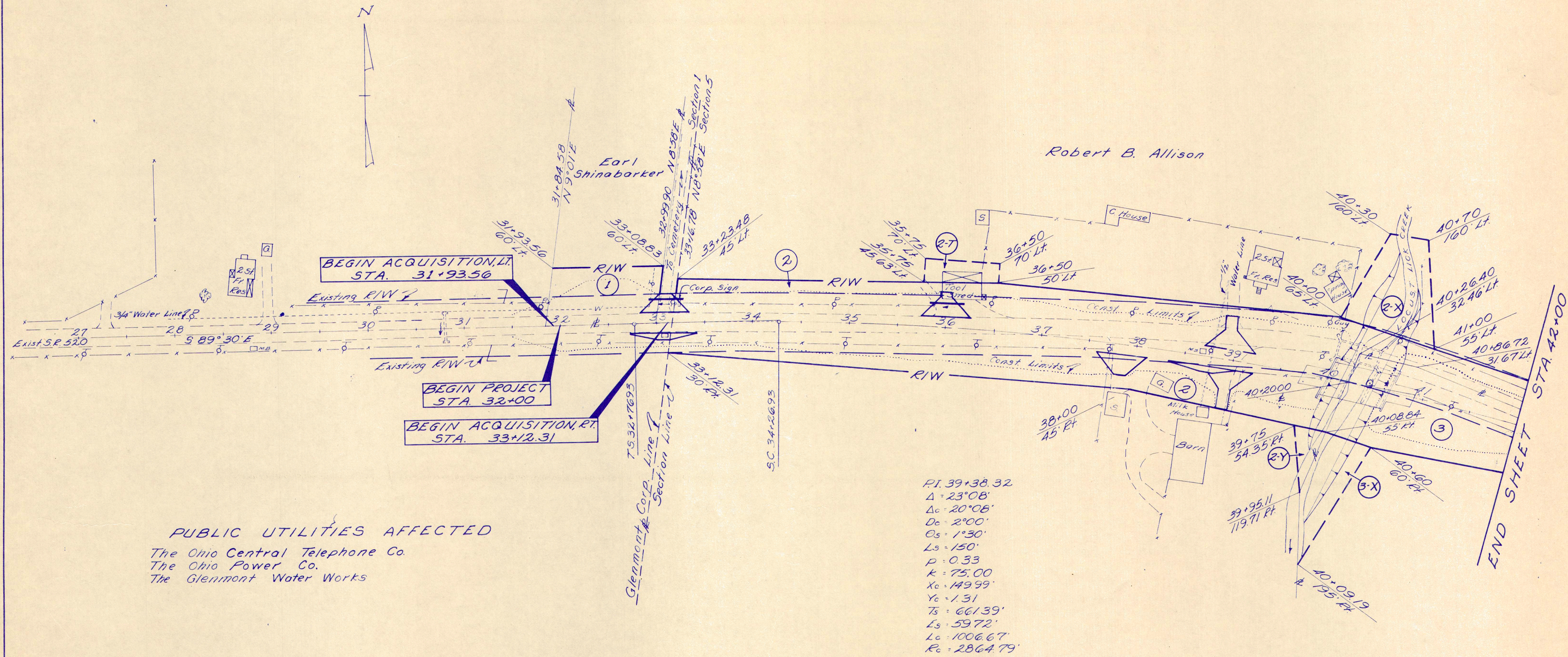
SEC. 1 R-9-W T-8-N  
SEC. 5 R-8-W T-8-N

FED. RD. DIVISION	STATE	PROJECT
2	OHIO	

18  
19

HOL-520-6.29

1  
2



**PUBLIC UTILITIES AFFECTED**  
The Ohio Central Telephone Co.  
The Ohio Power Co.  
The Glenmont Water Works

P.I. 39+38.32  
Δ = 23°08'  
Δc = 20°08'  
Dc = 2°00'  
Os = 1°30'  
Ls = 150'  
P = 0.33  
K = 75.00  
Xc = 149.99'  
Yc = 1.31  
Ts = 661.39'  
Ls = 59.72'  
Lc = 1006.67'  
Rc = 2864.79'

SUMMARY OF ADDITIONAL RIGHT OF WAY REQUIRED									
Parcel No.	OWNERS	Deed Book	Deed Page	Deed Area	To Be Acquired		Residue	Sheet No.	REMARKS
					Land	Bldg.			
1	Earl Shinabarker	150	368	15 A <sup>00</sup>	0.08 A <sup>00</sup>	No	1.34	1	
2	Robert B. Allison	124	483	14.22 A <sup>00</sup>	0.71 A <sup>00</sup>	Yes*	24.24 A <sup>00</sup>	15.2	*Remove Frame Garage
2-T	"				0.04 A <sup>00</sup>	Yes**	-	1	*Remove Frame Tool Shed
2-X	"				0.16 A <sup>00</sup>	No	-	1	
2-Y	"				0.02 A <sup>00</sup>	No	-	1	
3	The Briar Hill Stone Company	127	387	19.25 A <sup>00</sup>	0.41 A <sup>00</sup>	No	18.37 A <sup>00</sup>	15.2	
3-X	"				0.10 A <sup>00</sup>	No	-	1	

1	Earl Shinabarker	2	Robert B. Allison
1 PRO.	0.08 A <sup>00</sup>	2 PRO.	1.43 A <sup>00</sup>
1 T.B.A.	0.08 A <sup>00</sup>	2 T.B.A.	0.71 A <sup>00</sup>
		2-T T.B.A.	0.04 A <sup>00</sup>
		2-X T.B.A.	0.16 A <sup>00</sup>
		2-Y T.B.A.	0.02 A <sup>00</sup>

Note: The alternate method of stationing tangent lines for point reference was used thru the portions of the curve that are spiraled.

COMPLETION DATE: 9-23-66
Revised:

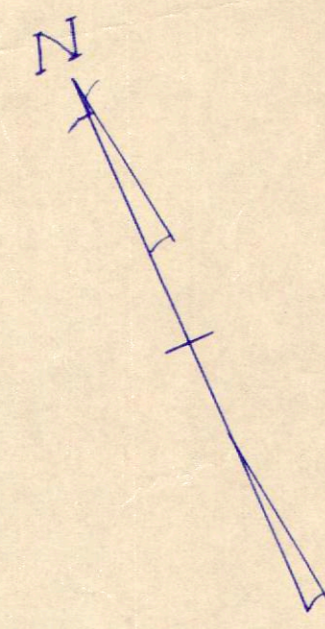
# RICHLAND TWP. SEC. 5 R-8-W T-8-N

FED. RD. DIVISION	STATE	PROJECT	
2	OHIO		

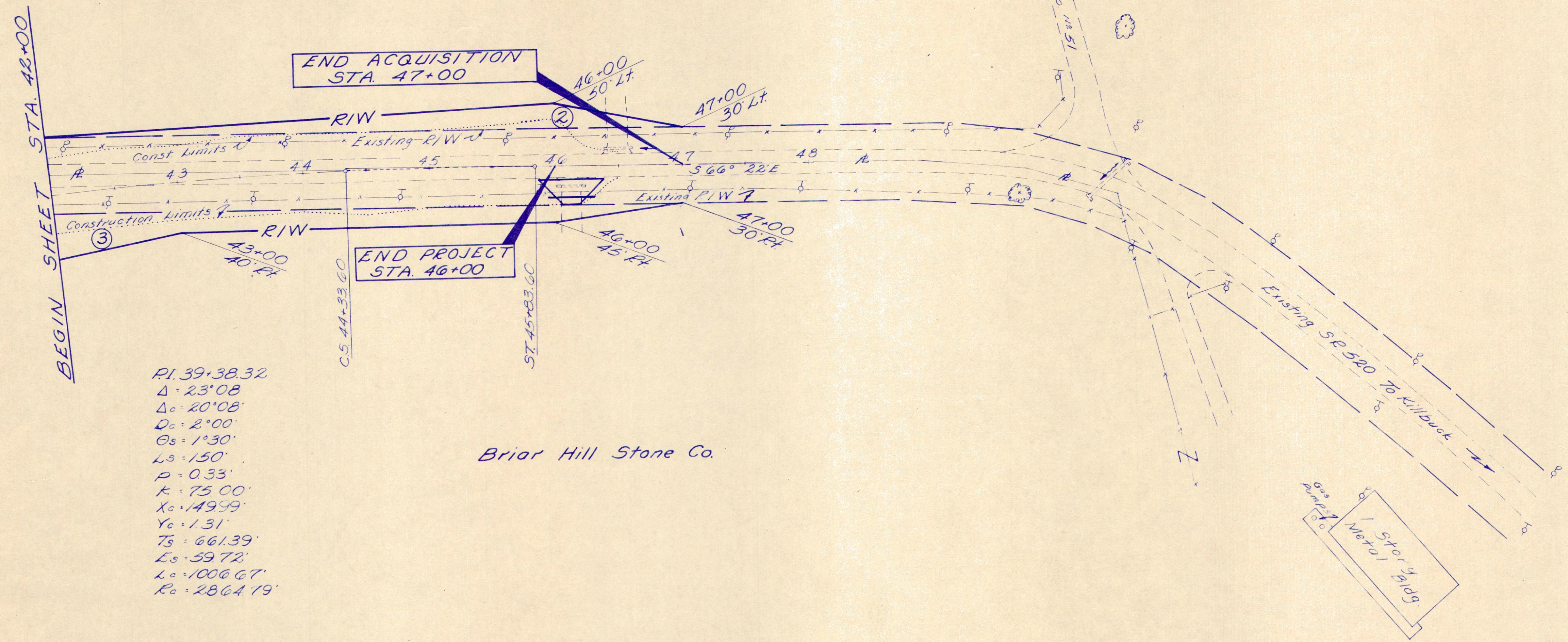
HOL-520-6.29

19  
19

2  
2



Robert B. Allison



PI. 39+38.32  
 $\Delta = 23^{\circ} 08'$   
 $\Delta_c = 20^{\circ} 08'$   
 $D_c = 2^{\circ} 00'$   
 $O_s = 1^{\circ} 30'$   
 $L_s = 150'$   
 $P = 0.33'$   
 $K = 75.00'$   
 $X_c = 149.99'$   
 $Y_c = 1.31'$   
 $T_s = 661.39'$   
 $E_s = 59.72'$   
 $L_c = 1006.67'$   
 $R_c = 2864.19'$

Briar Hill Stone Co.

3  
Briar Hill Stone Company

3 P.R.O.	0.47 A%
3 T.B.A.	0.41 A%
3-X.T.B.A.	0.10 A%

Note: The alternate method of stationing tangent lines for point reference was used thru the portions of the curve that are spiraled.

<b>COMPLETION DATE:</b> 9-23-66	
<i>Revised:</i>	