

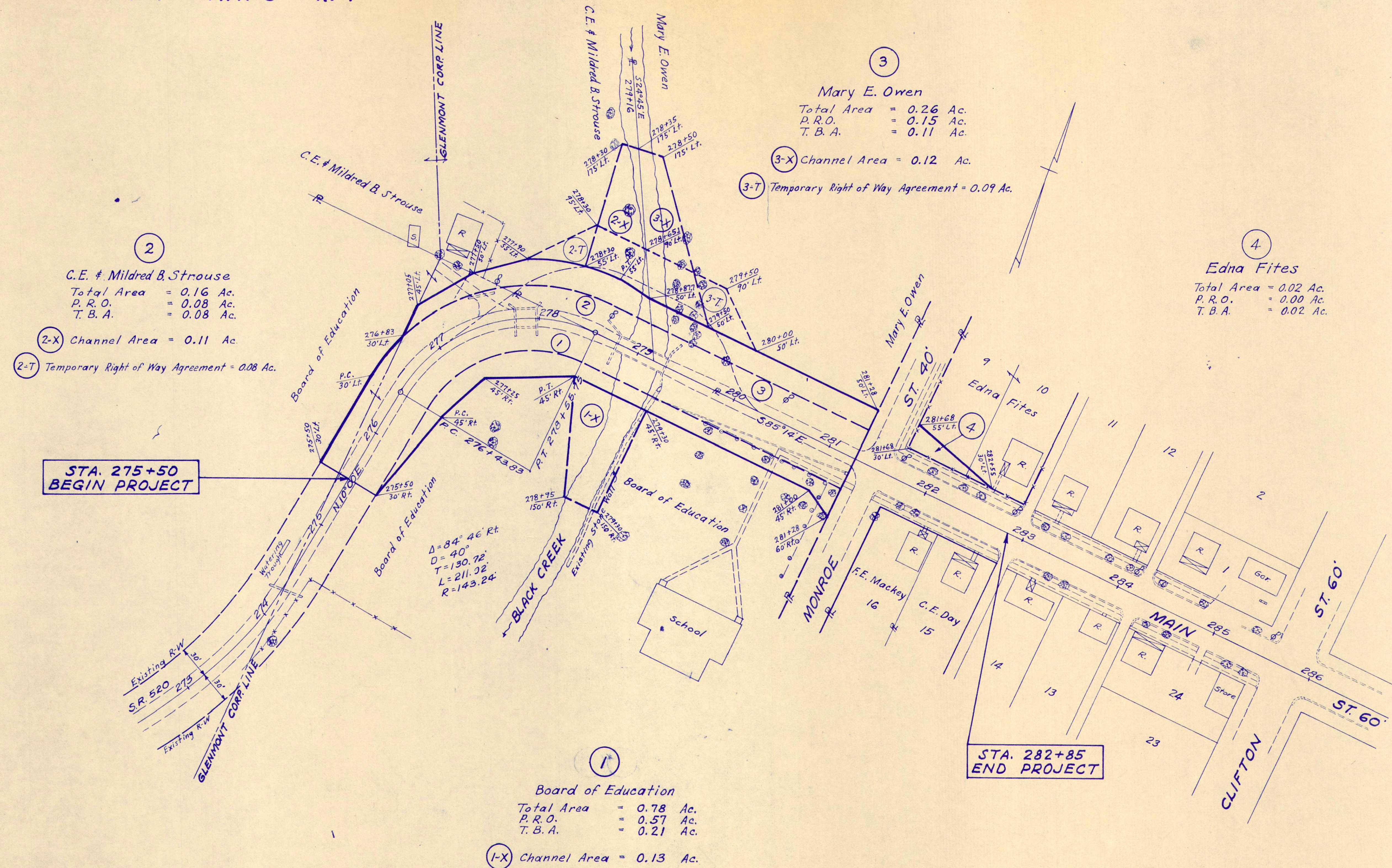
SR 520 W-30

RICHLAND TOWNSHIP  
SEC. 1 - TWP 8 - R. 9

HOLMES COUNTY  
VILLAGE OF GLENMONT

FED. RD. DIVISION	STATE	PROJECT	TYPE FUNDS
2	OHIO		H.I.F.

R/W PLAN  
HOL-520-(5.22 - 5.34)  
LENGTH OF PROJECT = 0.139 MILES



2  
C.E. & Mildred B. Strouse  
Total Area = 0.16 Ac.  
P.R.O. = 0.08 Ac.  
T.B.A. = 0.08 Ac.  
2-X Channel Area = 0.11 Ac.  
2-T Temporary Right of Way Agreement = 0.08 Ac.

3  
Mary E. Owen  
Total Area = 0.26 Ac.  
P.R.O. = 0.15 Ac.  
T.B.A. = 0.11 Ac.  
3-X Channel Area = 0.12 Ac.  
3-T Temporary Right of Way Agreement = 0.09 Ac.

4  
Edna Fites  
Total Area = 0.02 Ac.  
P.R.O. = 0.00 Ac.  
T.B.A. = 0.02 Ac.

1  
Board of Education  
Total Area = 0.78 Ac.  
P.R.O. = 0.57 Ac.  
T.B.A. = 0.21 Ac.  
1-X Channel Area = 0.13 Ac.

STA. 275+50  
BEGIN PROJECT

STA. 282+85  
END PROJECT