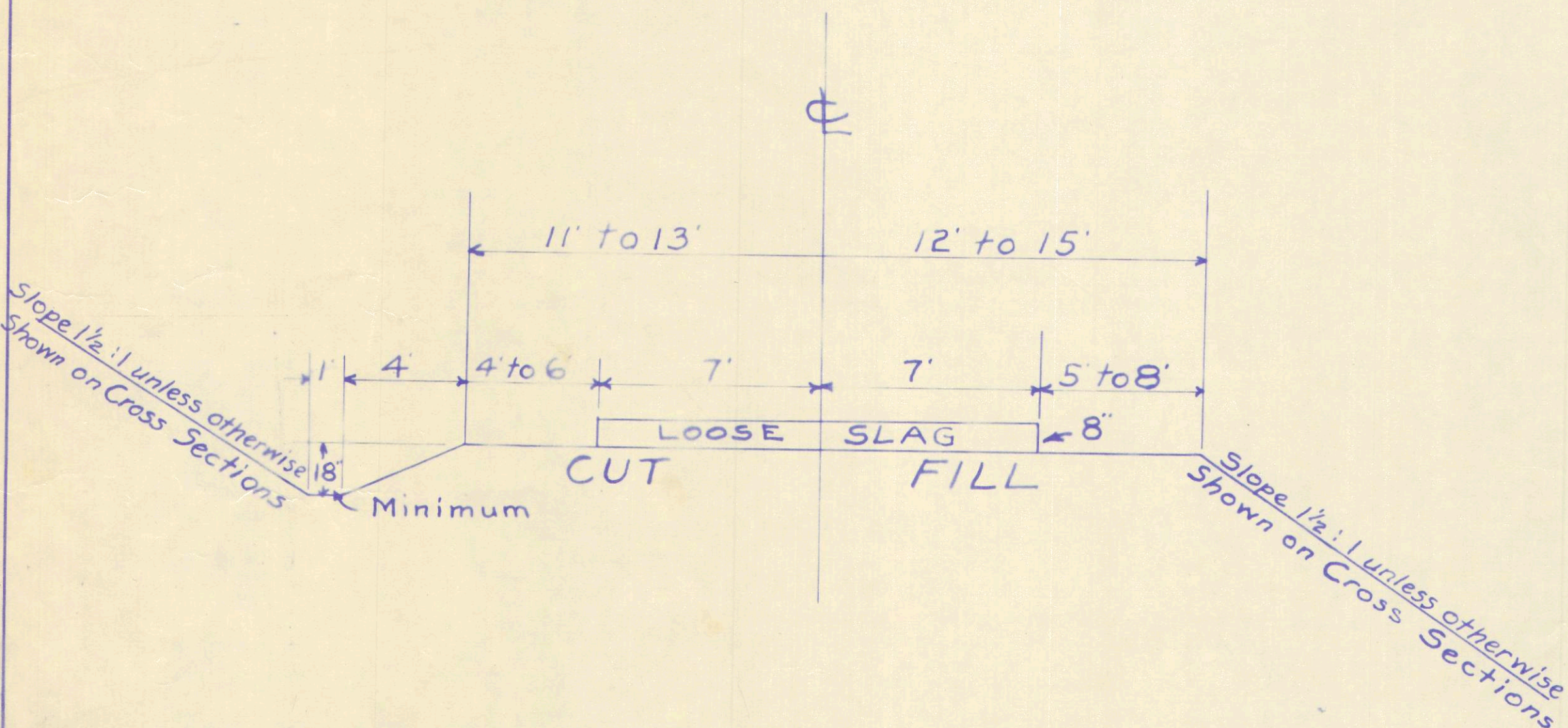


HOLMES COUNTY

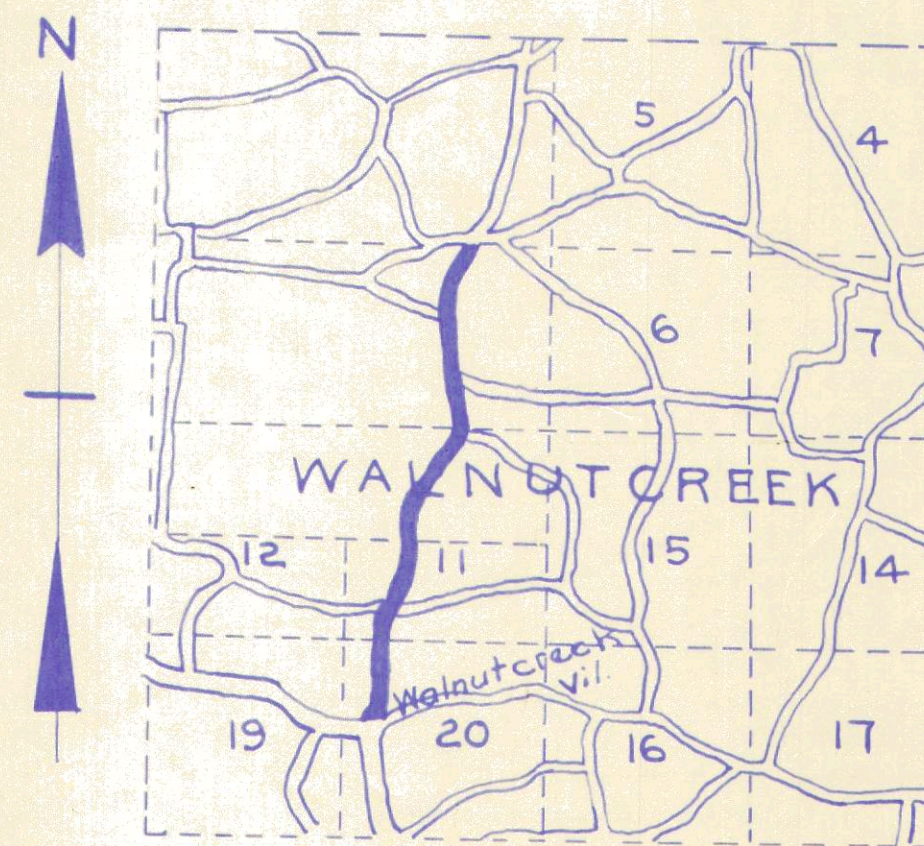
DIVISION OF CONSTRUCTION

WINESBURG-WALNUTCREEK ROAD

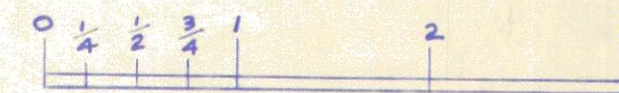
ROAD No 157 WALNUTCREEK TWP.



TYPICAL CROSS SECTION UNLESS OTHERWISE SHOWN ON CROSS SECTION SHEETS



LOCATION PLAN



PORTION TO BE IMPROVED

SCALES

Plan	1" = 100'
Profile (Vertical)	1" = 10'
Profile (Horizontal)	1" = 100'
Cross Sections	1" = 5'

Slag shall be spread uniformly to thickness shown by staking forms on the sides and using a strike off or by using an adjustable spreader box. Contractor shall keep the placed slag dragged until all the slag has been placed.

INDEX OF SHEETS

Title and Standard Sections	Sheet 1
Plans and Profile	"
Cross Sections	"
Culverts and Bridges	"
Summary of Quantities	"

The Standard Specifications of the State of Ohio, Division of Highways, in force on August 25th 1925 will govern this improvement unless otherwise shown.

I hereby approve these plans and declare that the making of this improvement will not require the closing to traffic of the Highway.

Approved April, 26-1927.

Karl Snyder
County Surveyor.

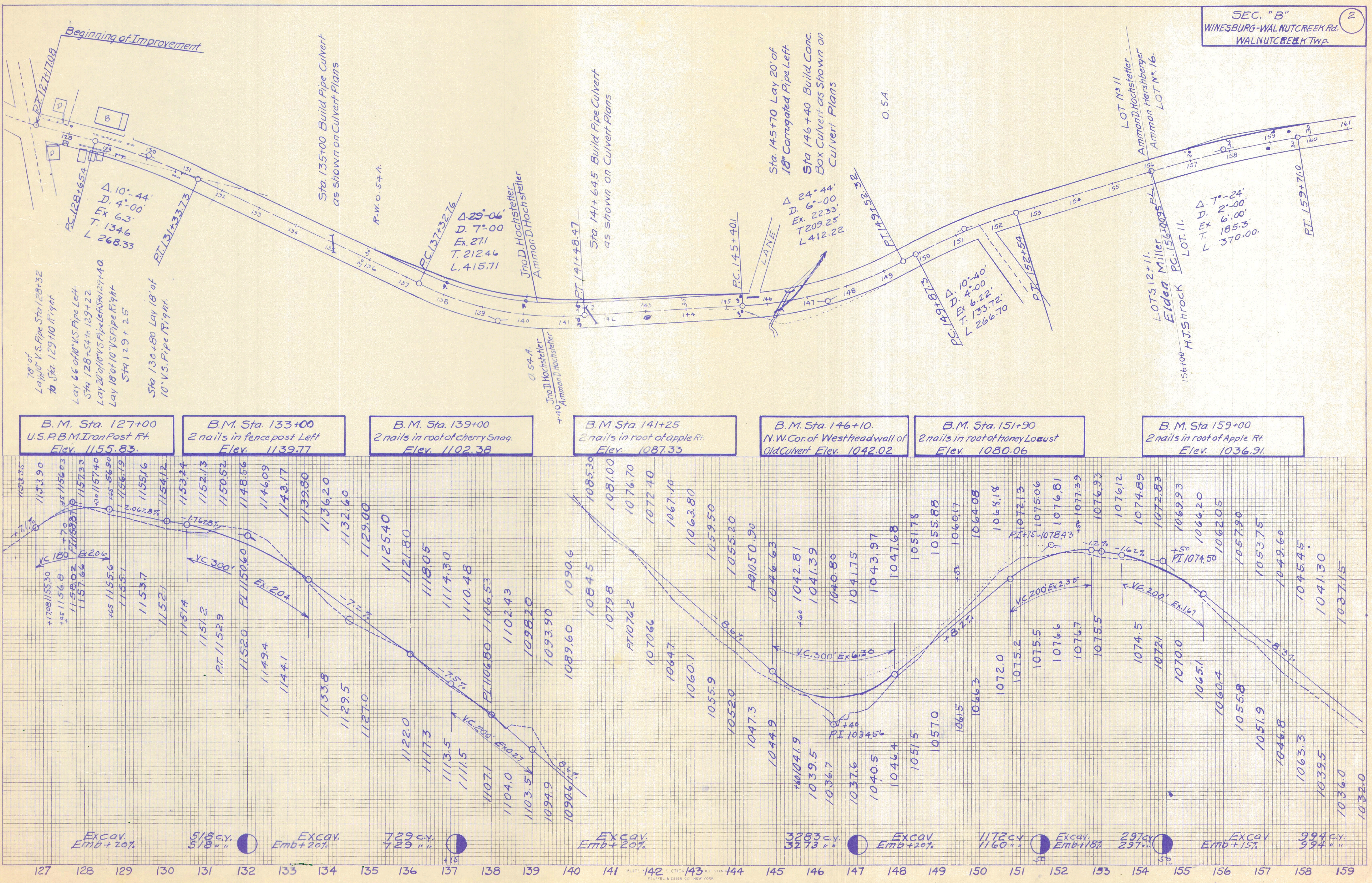
We the Commissioners of Holmes County, hereby approve these plans and certify that the Right-of-Way 60ft. wide is available for the construction, maintenance and repair of the above Highway.

Approved April, 26-1927.

H. H. Allison
J. A. Mullet
G. W. Hanna
County Commissioners.

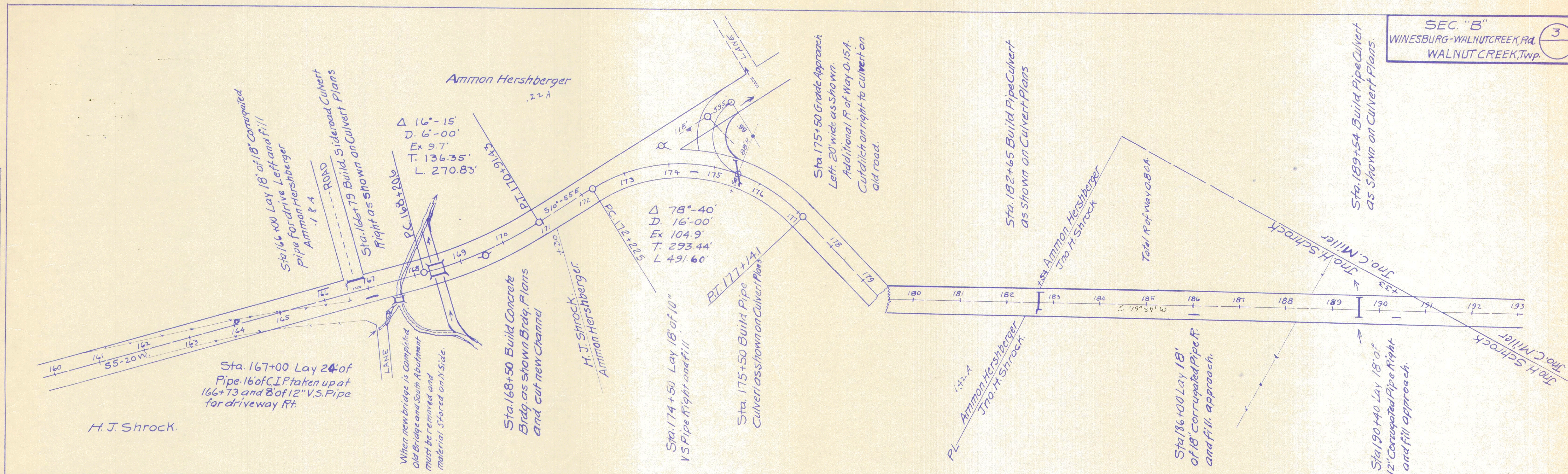
FINAL SURVEY PLOTTED TEMPLATE NO. DATE

ORIGINAL SURVEY PLOTTED TEMPLATE NO. DATE



FINAL SURVEY PLOTTED TEMPLATE NO. AREAS CHECKED

ORIGINAL SURVEY PLOTTED TEMPLATE NO. AREAS CHECKED



B.M. Sta. 164+10
2 nails in 10" Elm Left
Elev. 1018.09

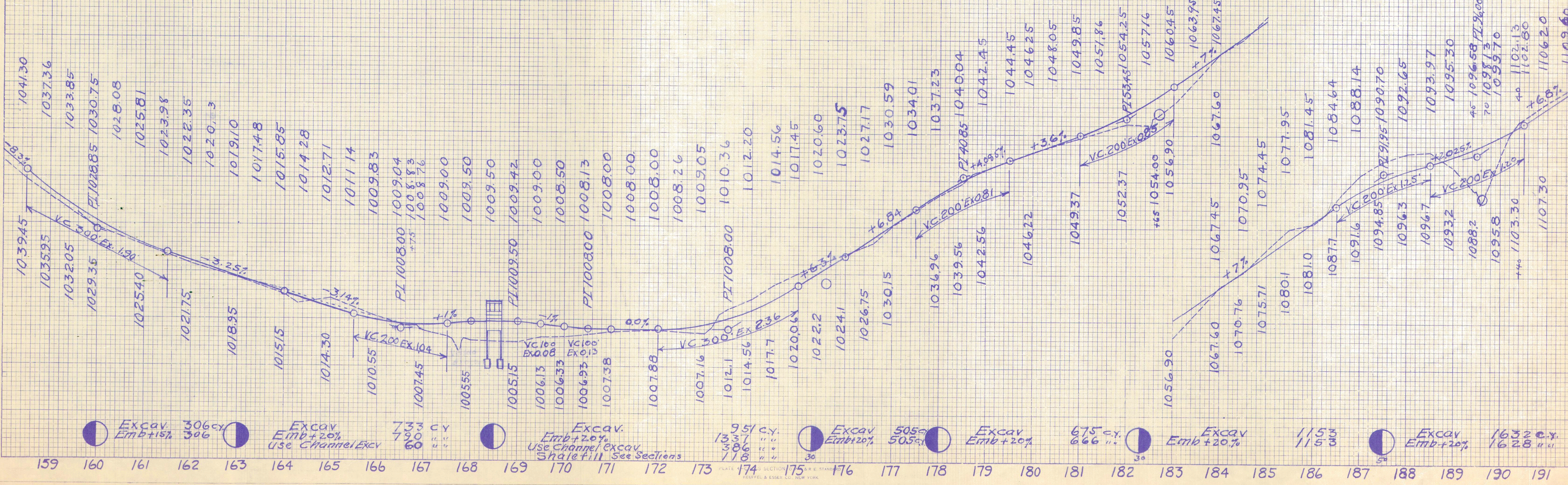
B.M. Sta. 167+25
2 nails in root of 16" Poplar Rt.
Elev. 1008.75

B.M. Sta. 171+50
2 nails in Hickory tree 100' Rt.
Elev. 1009.42

B.M. Sta. 180+50
2 nails in Wild Cherry Stump Right
Elev. 1058.37

B.M. Sta. 188+15
2 nails in root of Hickory 25' Rt.
Elev. 1101.74

B.M. Sta. 191+00
2 nails in Beech 40' Left
Elev. 1102.83



Excav. Emb +15% 306 cy 306

Excav. Emb +20% Use Channel Excv 703.3 cy 60

Excav. Emb +20% Use Channel Excav. Shale fill See Sections 951 cy 1337

Excav. Emb +20% 505 cy 505

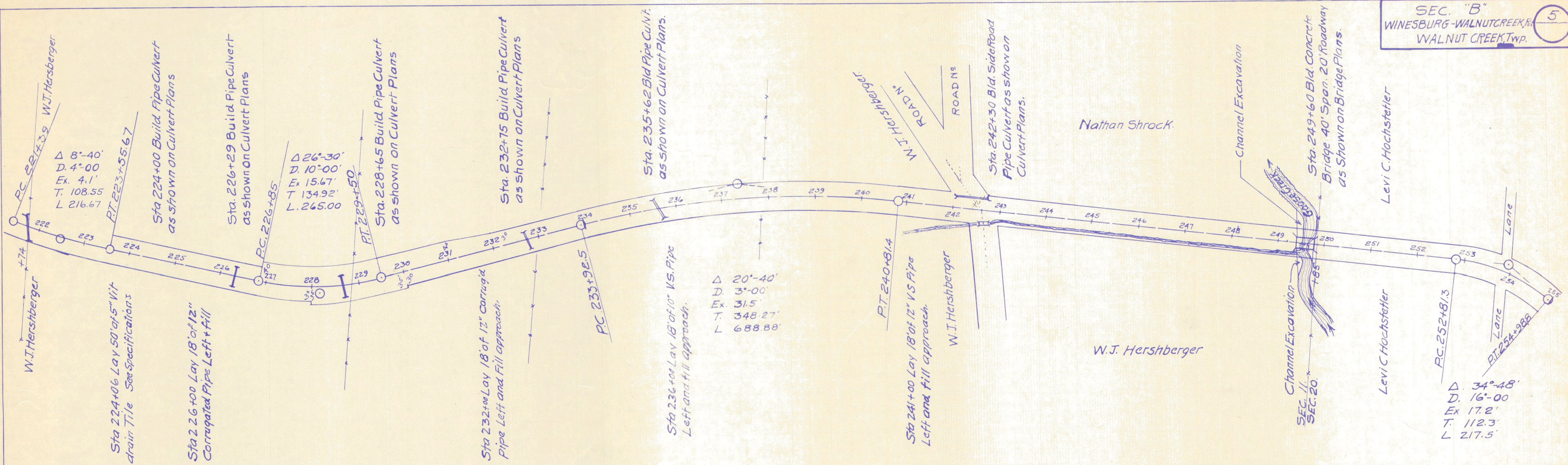
Excav. Emb +20% 675 cy 666

Excav. Emb +20% 1153

Excav. Emb +20% 1632 cy 1628

FINAL SURVEY PLOTTED TEMPLATE NO. AREAS CHECKED

ORIGINAL SURVEY PLOTTED TEMPLATE NO. AREAS CHECKED



B.M. Sta. 228+50
2 nails in maple 40' Rt.
Elev. 1065.70.

B.M. Sta. 232+00
2 nails in Elm at fence Left.
Elev. 1059.33

B.M. Sta. 242+65
Top of Conc. Slab S.E. Cor. Bldg. R.
Elev. 1003.34

B.M. Sta. 249+40
top of Abutment N.E. Cor. Old Bldg.
Elev. 997.60

B.M. Sta. 253+80
2 nails in 8" Elm tree 26' L.
Elev. 1007.87

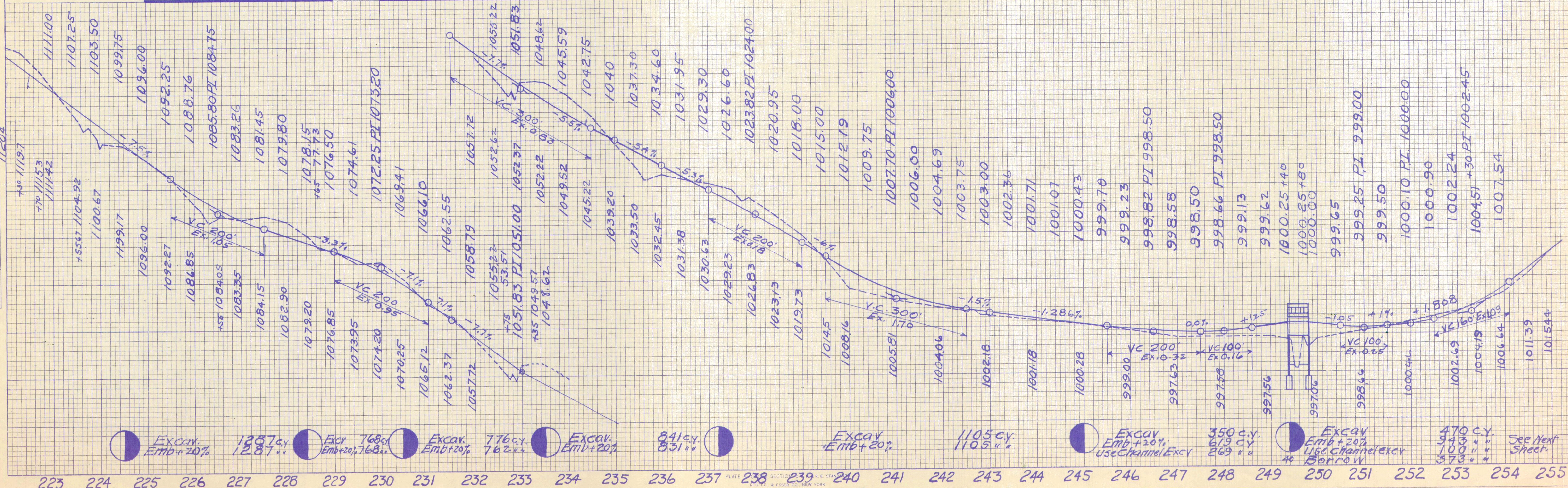


PLATE SECTION 238

See Next Sheet

