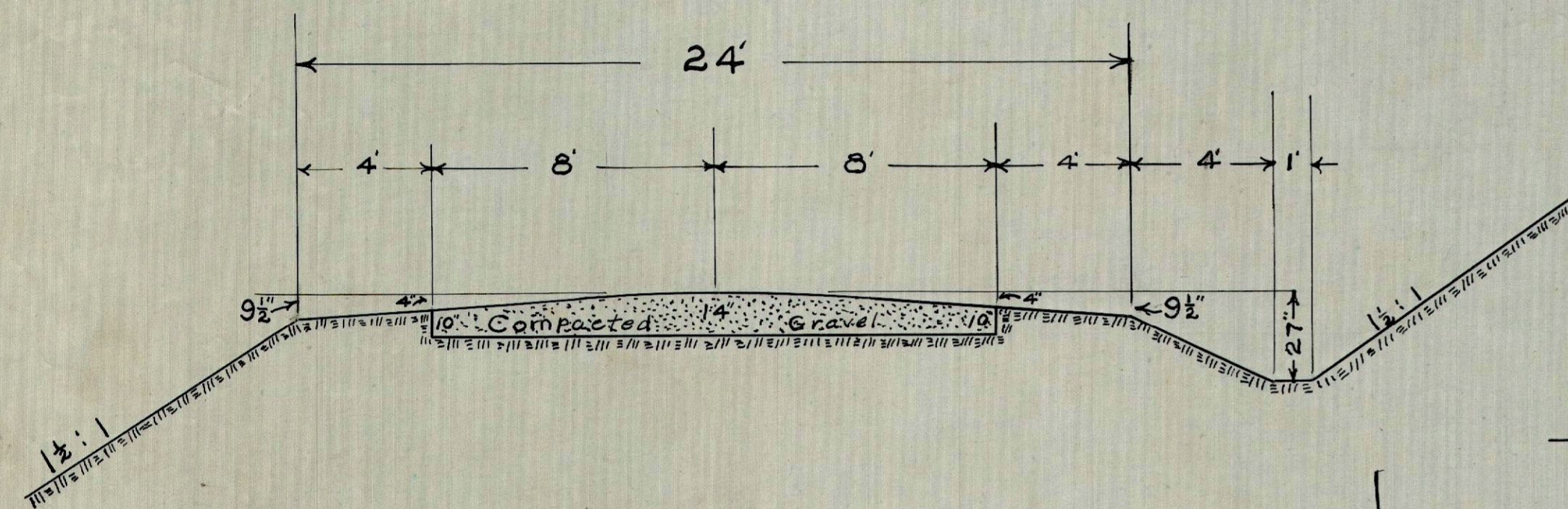
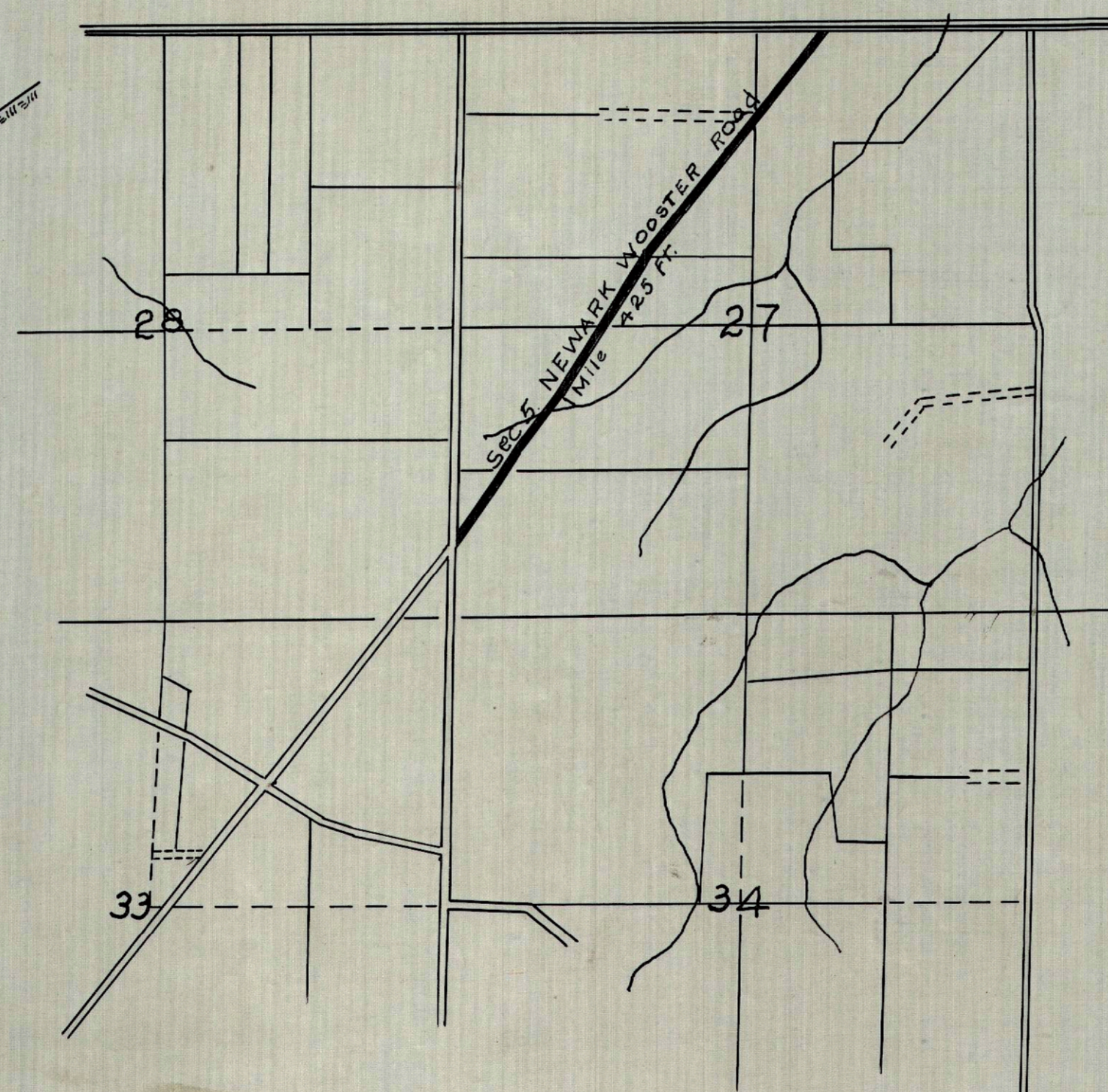


HOLMES COUNTY HIGHWAY
NEWARK WOOSTER ROAD
 SEC - 5 ROAD NO 33
 RIPLEY TOWNSHIP



TYPICAL CROSS SECTION



LOCATION PLAN
 PORTION TO BE IMPROVED
 Scale 4" = 1 Mile

ROADWAY QUANTITIES

2277	Cu. yds. Excavation Unclassified
5705	Lin. Ft. Finishing Roadway Slopes and ditches
26	Lin. Ft. of 12" Cor. Iron pipe in place
2	Cu. yds. Exc. For " " "
1.3	Cu. yds. 1-2-4 Con. In place
30	Lbs. Reinforcing Steel in place
380	Lin. Ft. 4" V.S.P in place covered with 30" of gravel
3	Plank Crossings Removed and Replaced
20	Lin. Ft. 10" Cor. Pipe Removed and Relaid
	TOTAL ROADWAY

PAVEMENT

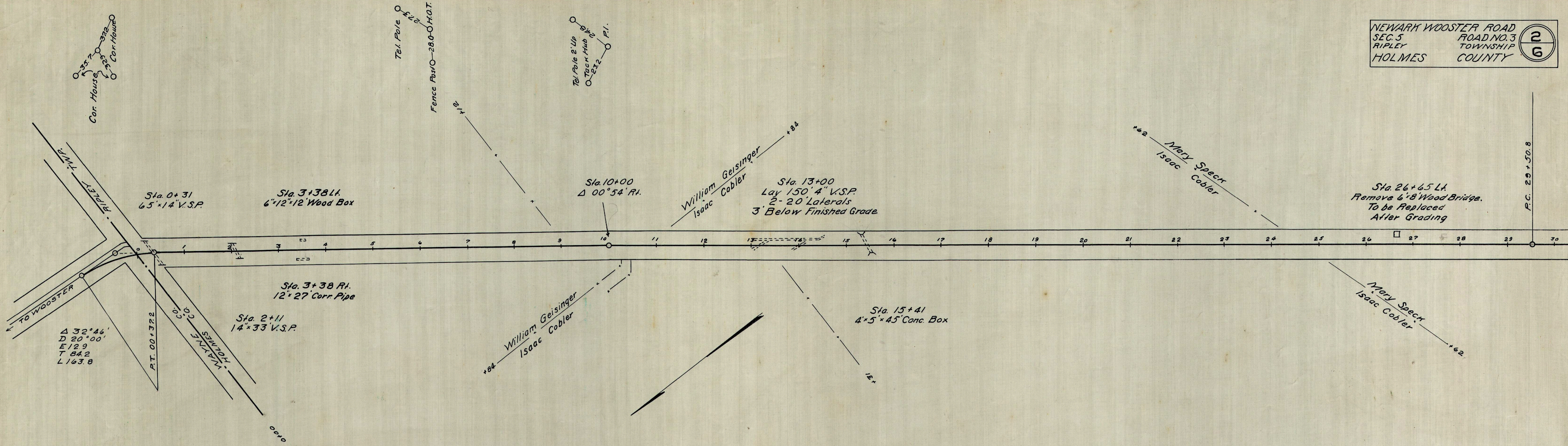
10142	Sq. yds. Traffic Bound Gravel in place compacted to 10' Sides 12' Center except cost gravel
3380	Cu. yds. Gravel For Pavement

INDEX OF SHEETS

No 1	Title Page
No 2-3	Profile and Alignment
No 4-6	Cross Sections

Approved

 County Commissioners



B.M. Sta. 0+31
 N.E. Cor. N. Hd. Wall
 Elev. 993.54

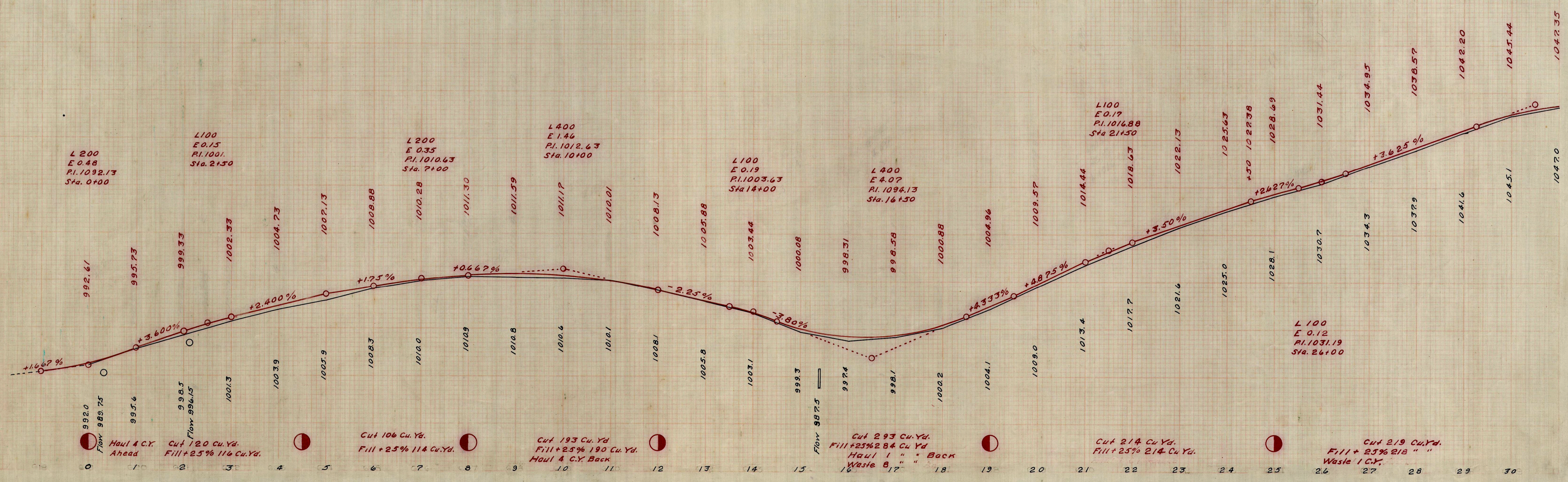
B.M. Sta. 2+11
 N.E. Cor. N. Hd. Wall
 Elev. 999.86

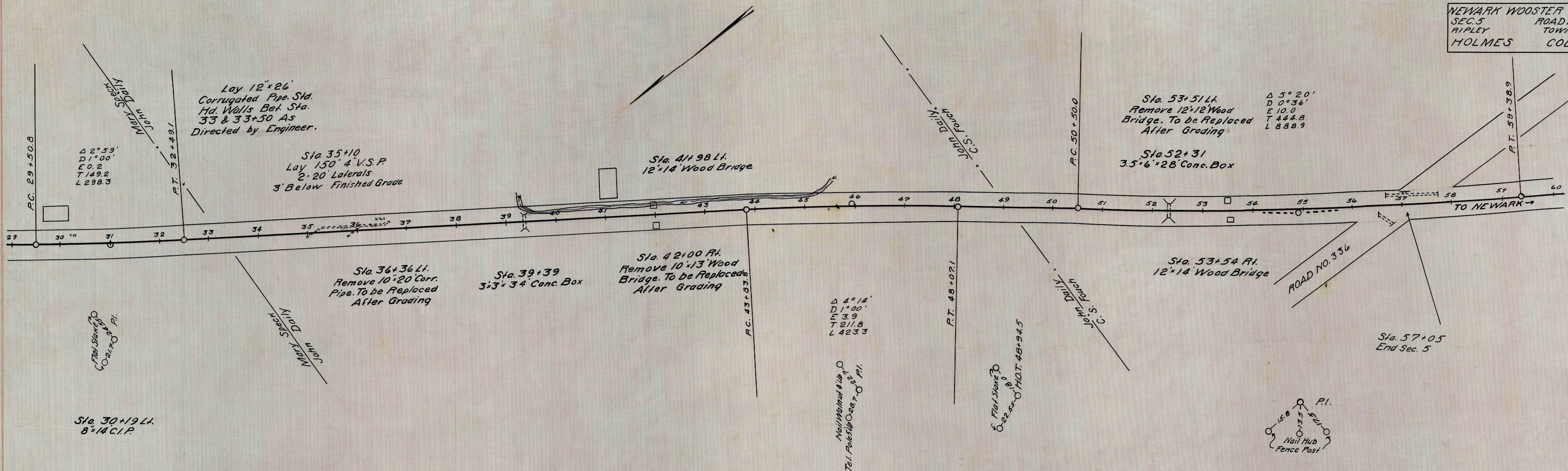
B.M. Sta. 7+88
 Spike Tel. Pole Lt.
 Elev. 1012.96

B.M. Sta. 14+30
 Nail Top Stump 25' Lt.
 Elev. 1001.03

B.M. Sta. 15+41
 N.E. Cor. N. Hd. Wall
 Elev. 994.72

B.M. Sta. 24+50
 Flat Rock 24' Lt.
 Elev. 1026.51





B.M. Sta. 30
 Edge Porch Center Steps
 Elev. 1048.36

B.M. Sta. 37+20
 Edge Porch Between Posts
 Elev. 1051.01

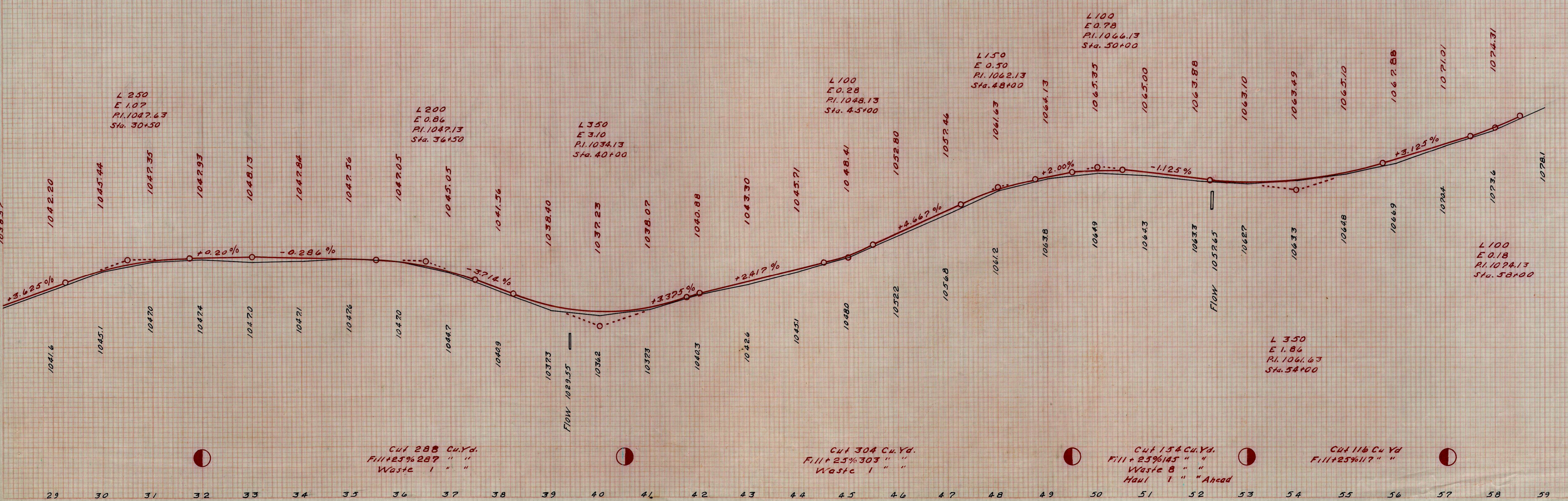
B.M. Sta. 39+39
 N.E. Cor. N. Hd. Wall
 Elev. 1034.91

B.M. Sta. 43+90
 Spine Pole P.T.
 Elev. 1042.60

B.M. Sta. 48+90
 Bent Spine Elm L.I.
 Elev. 1052.07

B.M. Sta. 52+31
 N.E. Cor. N. Hd. Wall
 Elev. 1063.47

B.M. Sta. 56+50
 N.E. Cor. N. Hd. Wall
 Elev. 1069.47



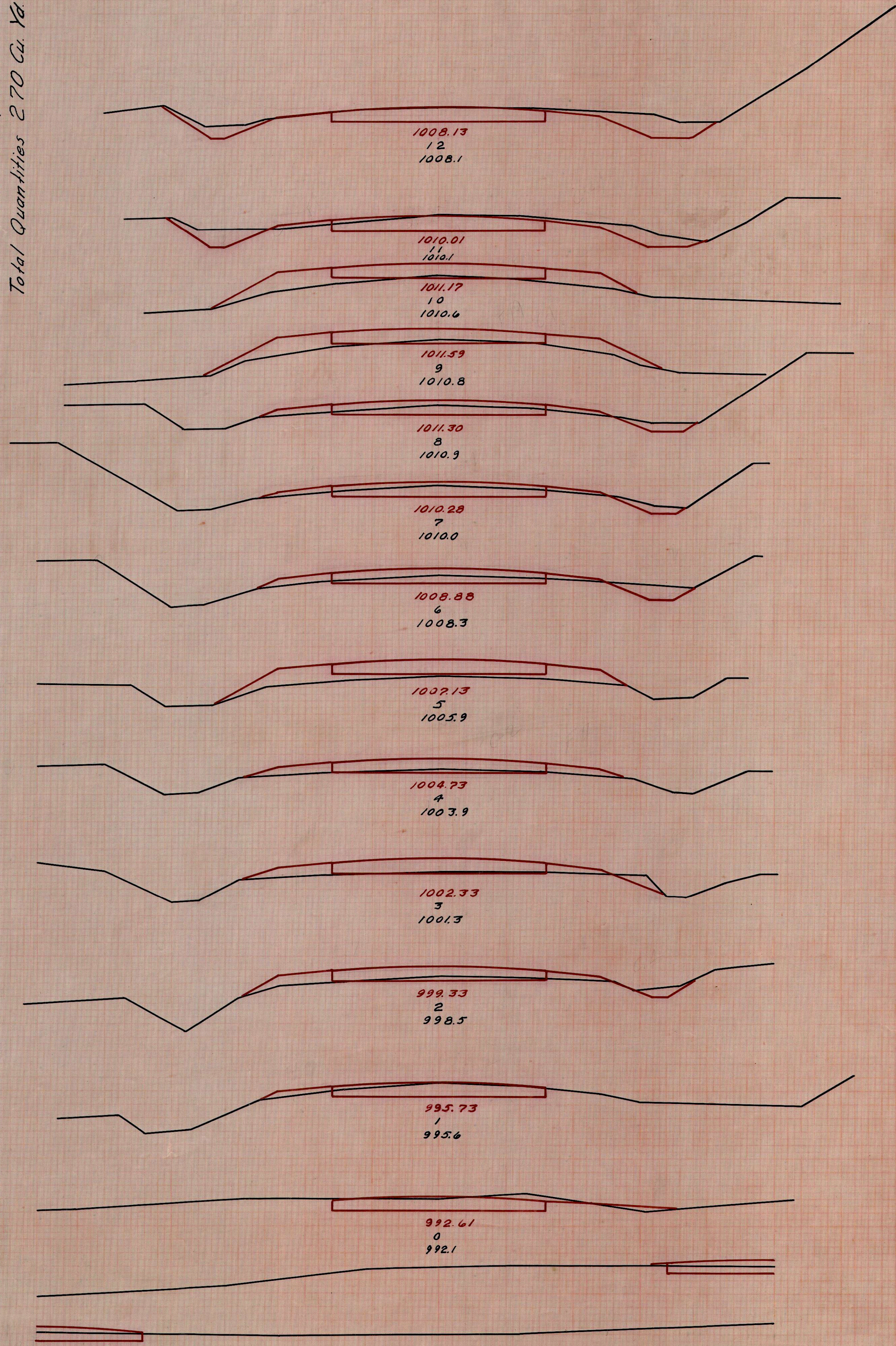
1038.57

1038.57

End Area
Cu. Yd.
Cut/Fill/Cut/Fill

32 0
13 2
29 1
54 37
0 19
2 70
1 19
24 43
12 4
44 15
12 4
41 15
10 4
19 39
0 17
4 44
2 7
7 26
2 7
11 26
4 7
33 15
14 1
67 4
22 1

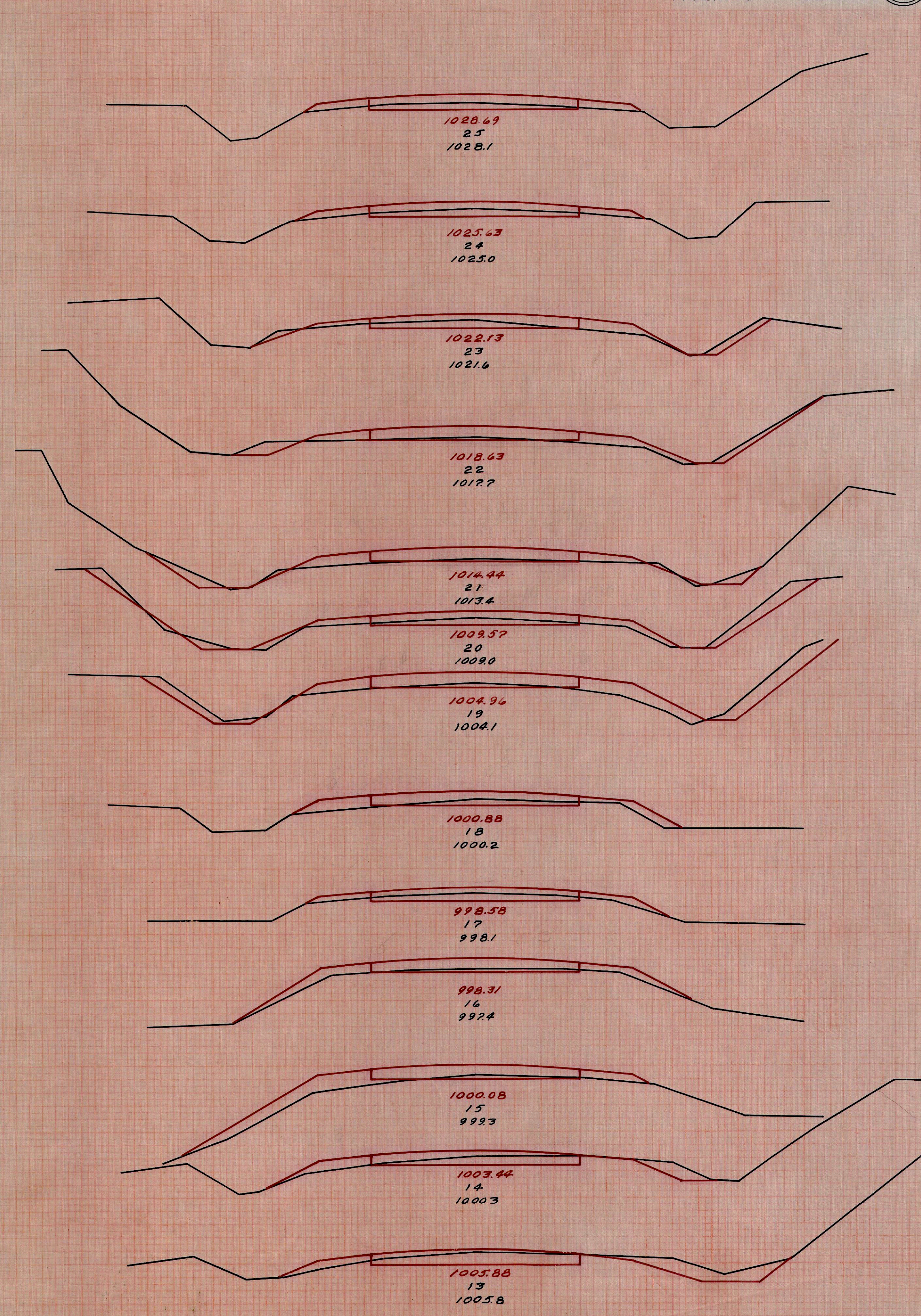
Note: Excavation increased,
0.64 ° Ft. End Area per Sta.
Total Quantities 270 Cu. Yd.



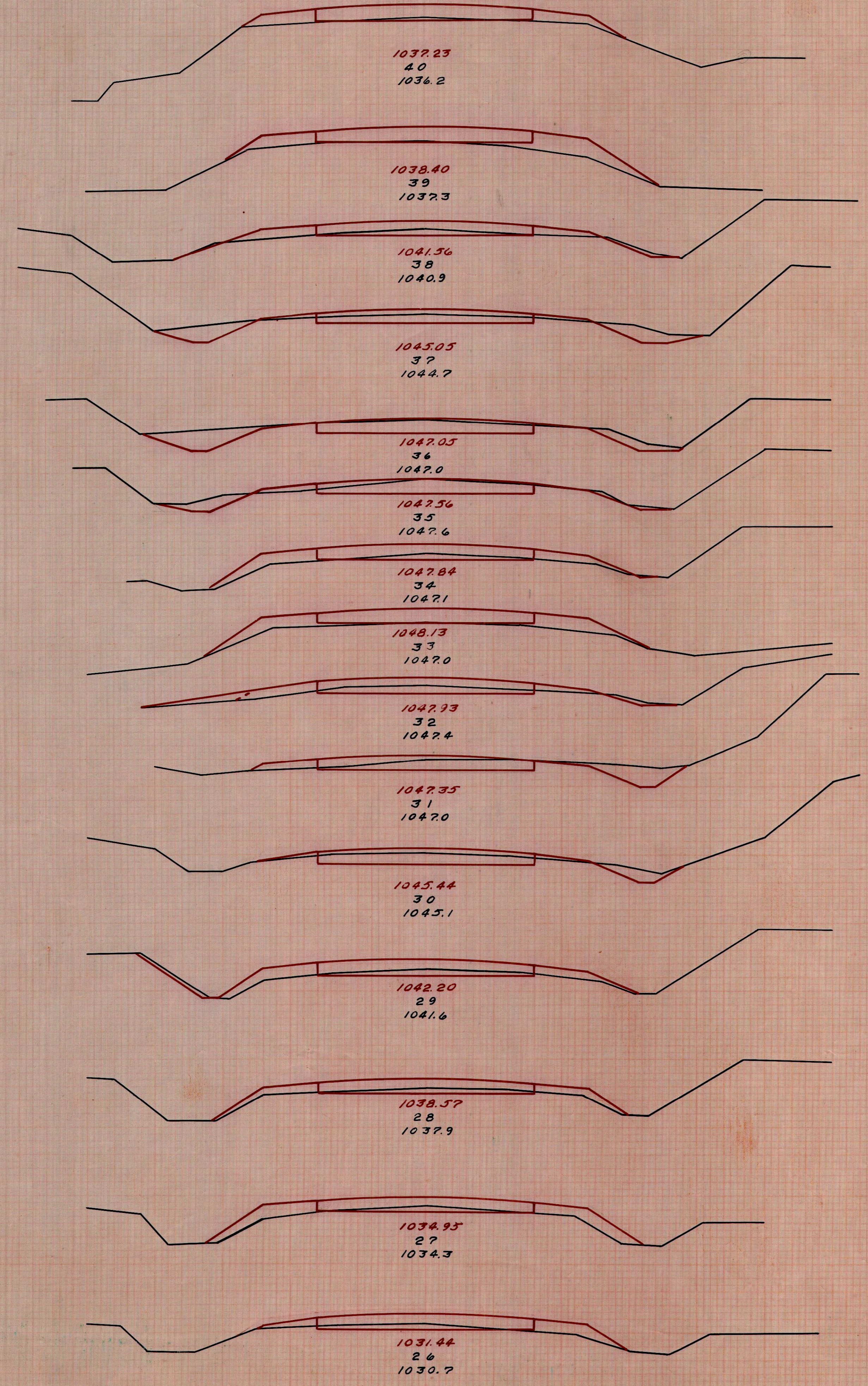
End Area
Cu. Yd.
Cut/Fill/Cut/Fill

6 5
26 17
8 4
33 19
10 6
33 28
8 9
24 32
5 8
39 30
16 8
59 41
16 14
39 43
5 9
28 26
10 5
24 37
3 15
7 63
1 19
26 41
13 3
67 11
23 3
102 6

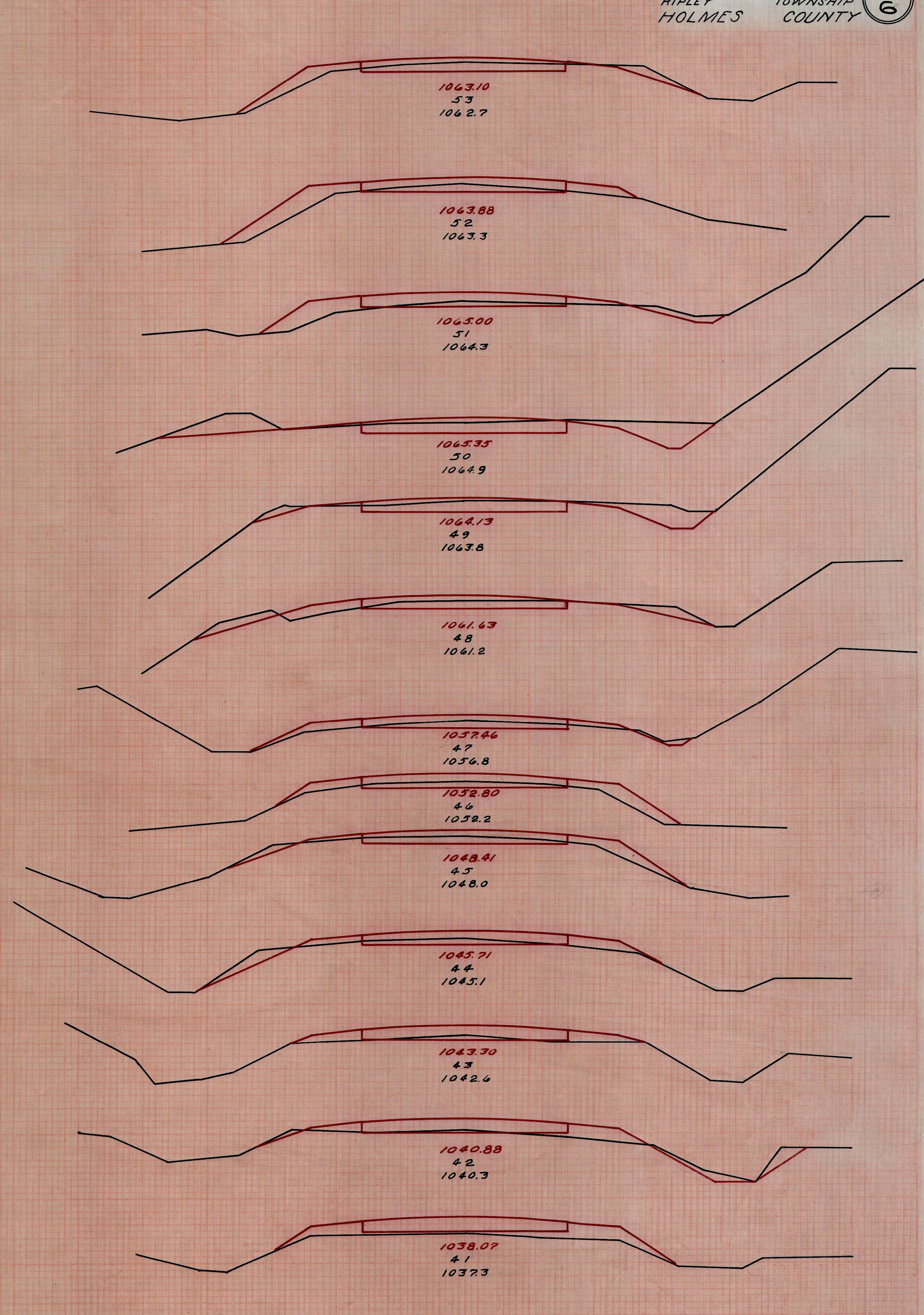
NEWARK WOOSTER ROAD
SEC. 5 ROAD NO. 3
RIPLEY TOWNSHIP
HOLMES COUNTY



End Area	Cu. Yd.	Cut	Fill	Cut	Fill
0	8				
0	46				
0	17				
7	43				
4	6				
44	15				
20	2				
87	4				
27	0				
85	4				
19	2				
41	22				
3	10				
6	41				
0	12				
18	32				
10	5				
50	15				
17	3				
61	9				
16	2				
41	24				
6	11				
20	32				
5	6				
17	35				
4	13				
13	37				
3	7				
17	22				



End Area	Cu. Yd.	Cut	Fill	Cut	Fill
12	9				
30	46				
4	16				
17	50				
5	11				
67	20				
31	0				
22	0				
81	0				
22	0				
70	9				
16	5				
46	22				
9	7				
28	33				
6	11				
30	31				
10	8				
37	28				
10	7				
22	24				
2	4				
17	26				
7	8				
13	46				
0	17				
0	46				



NEWARK WOOSTER ROAD
SEC. 5
RIPLEY
HOLMES COUNTY

5
6

End Area Cu. Yd.
Cut/Fill Cut/Fill

NEWARK WOOSTER ROAD
SEC. 5 ROAD NO. 3
RIPLEY TOWNSHIP
HOLMES COUNTY

6
6

