

SR 3 M-15

FED. AID DIST. NO.	STATE	FED. AID PROJECT	FISCAL YEAR
10	OHIO	390-E-RE.	1930



S.H. (I.C.H.) 24 SEC. E-2
 S.H. (I.C.H.) 540 SEC. -A
 HOLMES COUNTY

STATE OF OHIO

DIVISION OF HIGHWAYS
COLUMBUS WOOSTER ROAD

S.H. (I.C.H.) NO. 24 SEC. E-2 PET. NO.
 S.H. (I.C.H.) NO. 540 SEC. -A PET. NO.
HOLMES COUNTY

WASHINGTON TOWNSHIP

The Standard Specifications of the State of Ohio, Division of Highways, in force on date of contract will govern this improvement

I hereby approve these plans and declare that the making of this improvement will require the closing to traffic of the highway and that detours will be provided as shown on the plan and estimates and right of way has been provided.

Approved: Karl Snyder
 Date, 8-30-29 Resident District Deputy Director.

Approved: Ralph H. Strait
 Date, 9-3-29 Resident Division Deputy Director

Approved: Robert J. Beignter
 Date, 10/27/29 Chief Engineer
 Bureau of Construction

Approved: _____
 Date, _____ Chief Engineer
 Bureau of Maintenance

Approved: _____
 Date, _____ Chief Engineer
 Bureau of Bridges

Approved: Amelia ...
 Date, 10-28-29 First Asst. Director & Chief Engineer.

Approved: Robert M. Wair
 Date, 10-28-29 Director of Highways

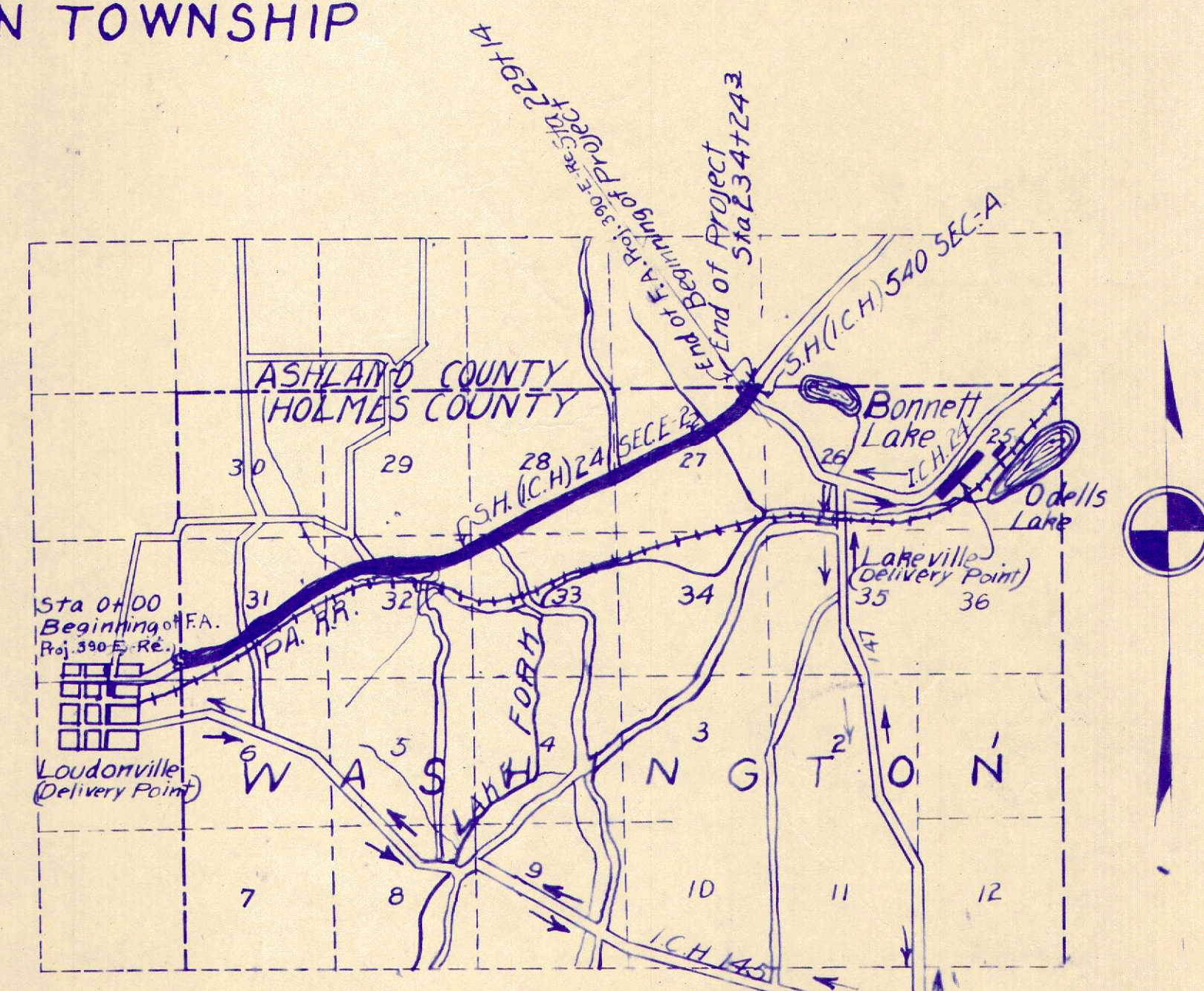
Recommended for Approval: _____
 Date, _____ District Engineer
 Bureau of Public Roads

Recommended for Approval: _____
 Date, _____ Chief Engineer
 Bureau of Public Roads

Approved: _____
 Date, _____ Chief of Bureau

CONVENTIONAL SIGNS

State Line	-----
County Line	-----
Township Line	-----
Section Line	-----
Property Line not fenced	-----
Center Line	-----
City or Village Line	-----
Fence	x x x x
Telephone or Telegraph	T T T T
Steam Railroad	-----
Gas & Oil Pipe Lines	-----
Guard Rail	-----
Drain Pipe - new	-----
Drain Pipe - old	-----



LOCATION PLAN
 SCALE OF MILES

We, the Commissioners of Holmes County, hereby approve these plans, and certify that the right-of-way 60 feet wide is available for the construction, maintenance and repair of the above highway.

Date, _____ County Commissioners.

SCALES

Plan	1" = 100'
Profile (Vertical)	1" = 10'
Profile (Horizontal)	1" = 100'
Cross Sections	1" = 5'

INDEX

Title Page	1.
Typical Cross Section	2-3+4.
Plans and Profile	5 to 12.
Cross Sections	13 to 41.
Structural Plans	
Curve Tables	42 to 43.
Summary Sheets	44-45+46.
Supplemental Prints of Structural Standard Dr. Nos.	95, 96, 100 AS 2430, +116-16.

FINAL SURVEY
 SURVEYED BY
 DATE
 NOTE BOOK NO.
 AREAS CHECKED

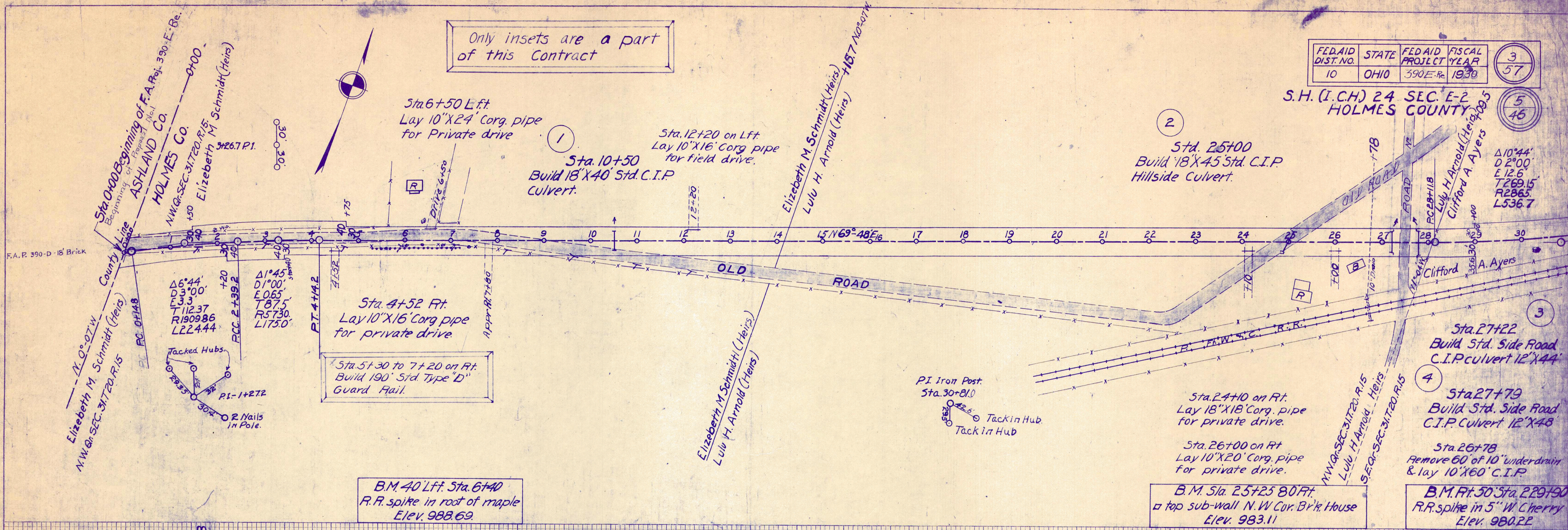
FINAL SURVEY
 SURVEYED BY
 DATE
 NOTE BOOK NO.
 AREAS CHECKED

Only insets are a part of this Contract

FED. AID DIST. NO.	STATE	FED. AID PROJECT	FISCAL YEAR
10	OHIO	390-E-R	1930

S. H. (I. C. H.) 24 SEC. E-2
 HOLMES COUNTY

3
 57
 5
 46

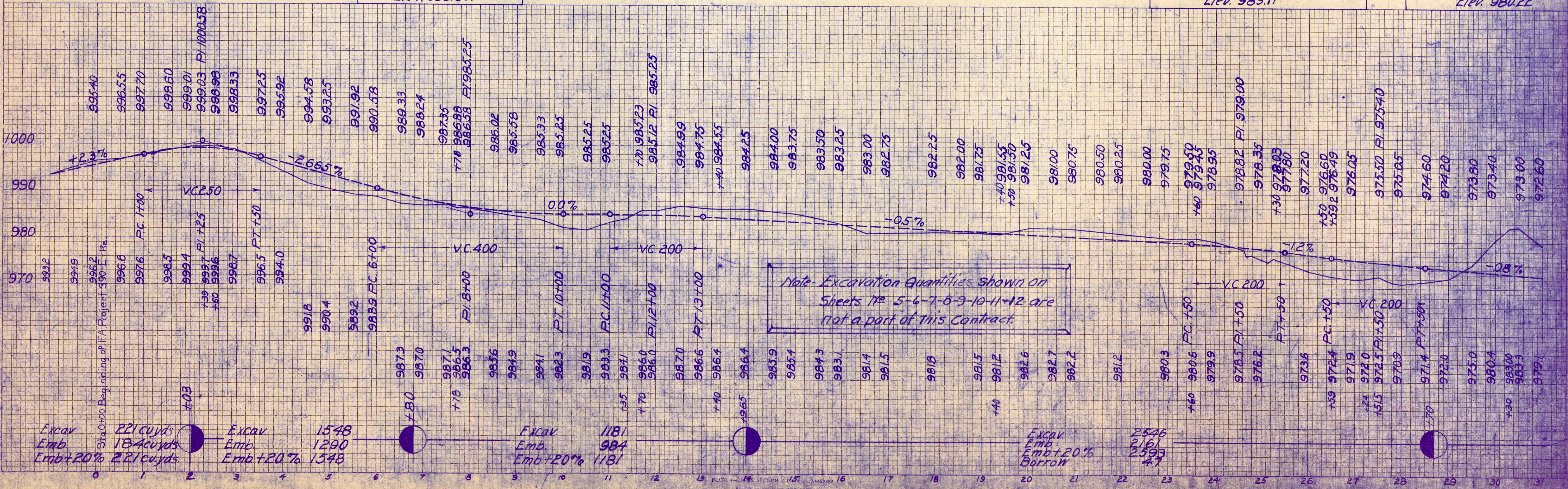


Sta. 51+30 to 71+20 on Rt.
 Build 190' Std. Type "D"
 Guard Rail.

B.M. 40' Lft. Sta. 6+40
 R.R. spike in root of maple
 Elev. 988.69

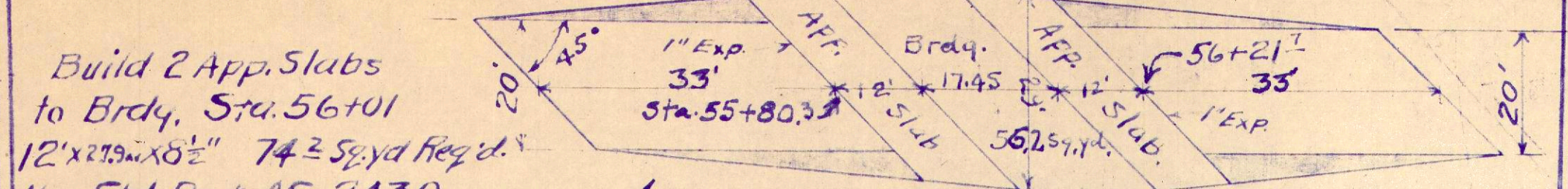
B.M. Sta. 25+25 80 Ft.
 top sub-wall N.W. Cor. Brk. House
 Elev. 983.11

B.M. Rt. 50' Sta. 229+90
 R.R. spike in 5" W. Cherry
 Elev. 980.22



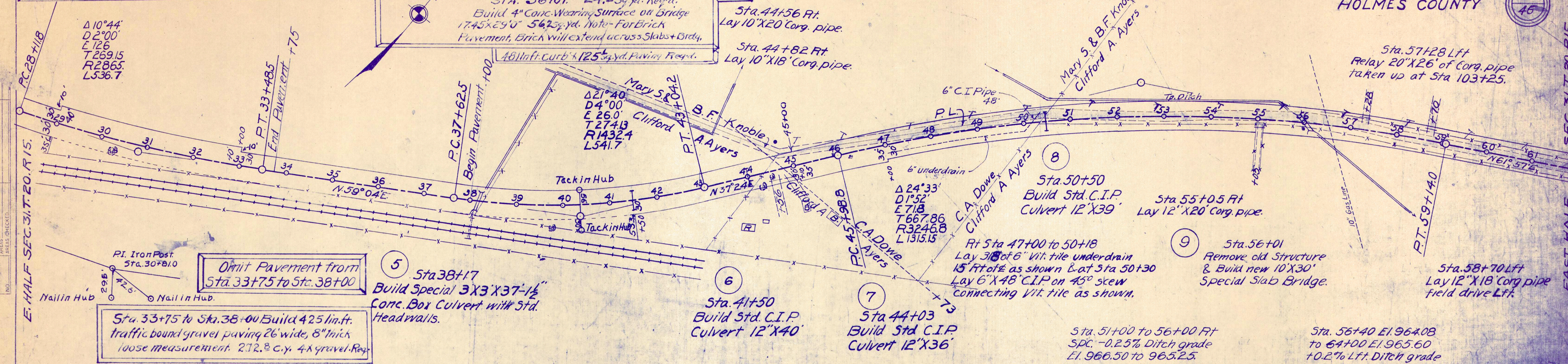
Note - Excavation Quantities shown on Sheets No. 5-6-7-8-9-10-11-12 are not a part of this Contract.

Only insets area part of this contract



FED. AID DIST. NO.	STATE	FED. AID PROJECT	FISCAL YEAR
10	OHIO	390 E-1	1930

S.H. (I.C.H.) 24 SEC. E-2 HOLMES COUNTY



Omit Pavement from Sta. 33+75 to Sta. 38+00

Sta. 33+75 to Sta. 38+00 Build 425 lin. ft. traffic bound gravel paving 26 wide, 8" thick loose measurement. 272.8 c.y. 4K gravel. Reg.

5 Sta. 38+17 Build Special 3X3X37-1/2" Conc. Box Culvert with Std. Headwalls.

6 Sta. 41+50 Build Std. C.I.P. Culvert 12"X40"

7 Sta. 44+03 Build Std. C.I.P. Culvert 12"X36"

8 Sta. 50+50 Build Std. C.I.P. Culvert 12"X39"

9 Sta. 56+01 Remove old Structure & Build new 10'X30' Special Slab Bridge.

Sta. 57+28 Lft Relay 20"X26" of Corq. pipe taken up at Sta 103+25.

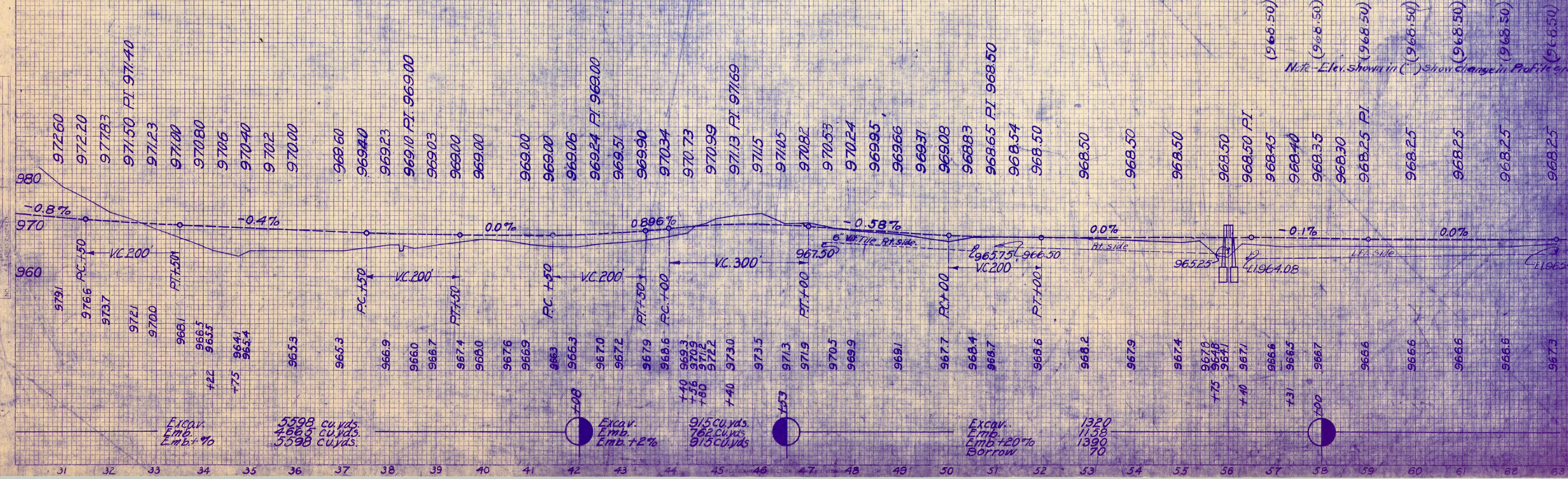
Sta. 58+70 Lft Lay 12"X18" Corq. pipe field drive Lft.

B.M. Rt. Sta. 33+50 R.R. spike in R.R. Tel. pole Elev. 971.09

B.M. Sta. 39+90 35' Rt. spike in W. Cherry Elev. 970.31

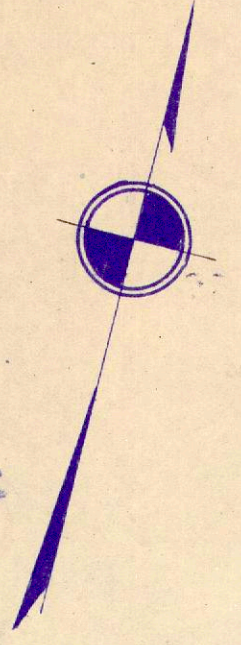
B.M. Sta. 44+00 50' Rt. spike in apple tree Elev. 975.29

B.M. Sta. 56+30 50' Rt. spike in Poplar Elev. 965.33



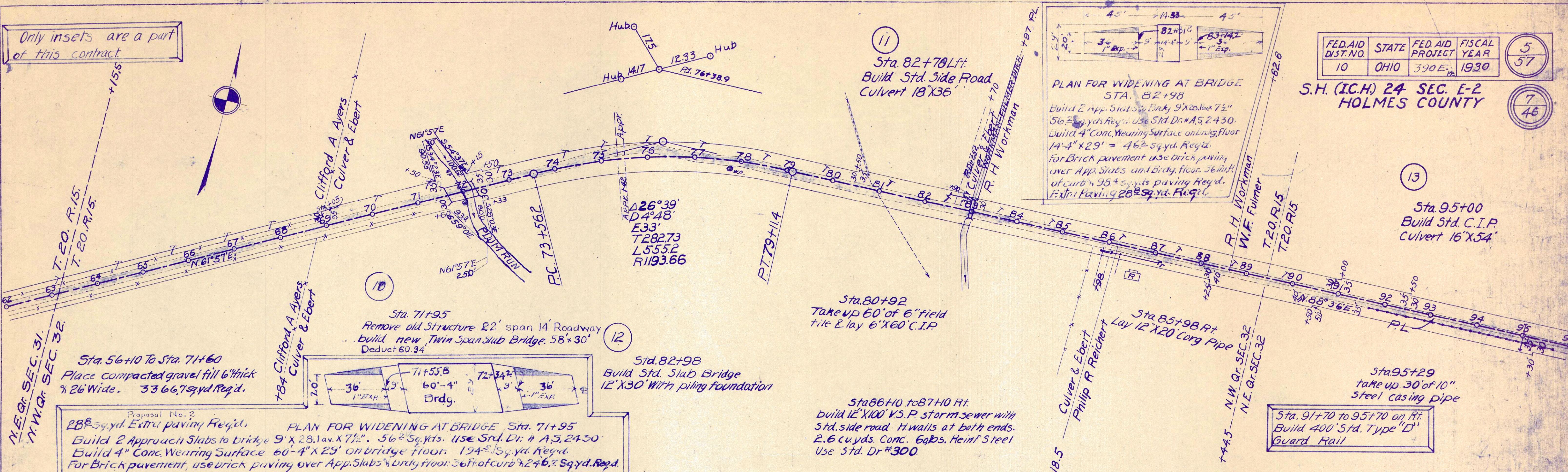
Note - Elev. shown in () show change in Profile grade

Only insets are a part of this contract.



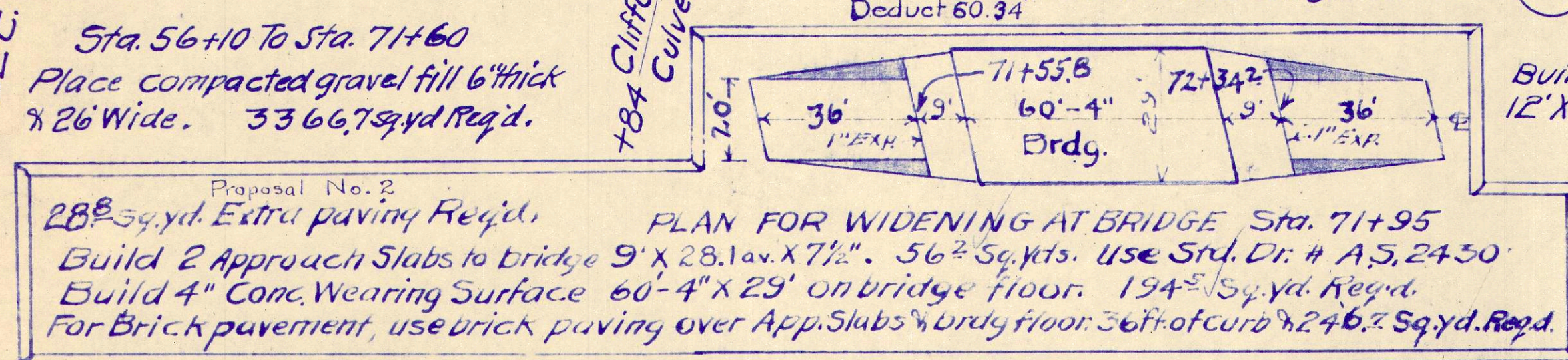
DATE
BY
SURVEYED
PLOTTED
NOTE BOOK
TEMPLATE
AREAS CHECKED
NO.

DATE
BY
ORIGINAL
SURVEY
PLOTTED
NOTE BOOK
TEMPLATE
AREAS CHECKED
NO.



FED. AID DIST. NO.	STATE	FED. AID PROJECT	FISCAL YEAR
10	OHIO	390 E.	1930

S.H. (I.C.H.) 24 SEC. E-2
HOLMES COUNTY



Sta. 66+00 to 72+00 Lft. Spc. -0.25% Ditch Grade El. 966.25 to 964.75

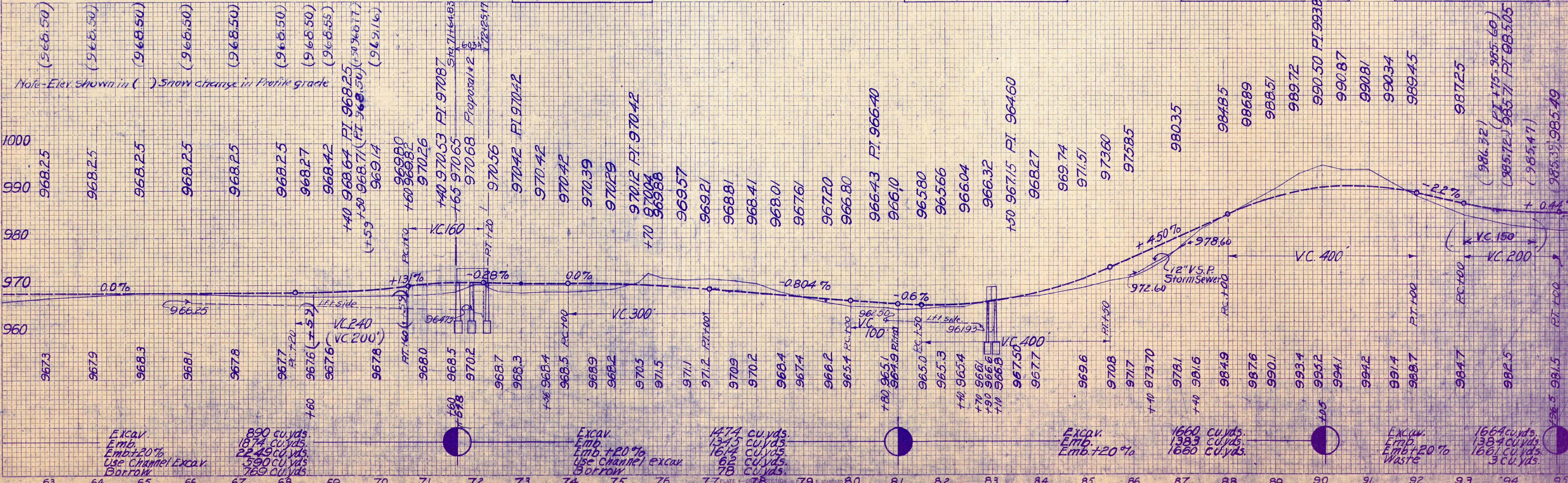
B.M. Sta. 72+40 75' Rt. spike in willow Elev. 968.50

Sta. 80+80 to 82+70 Lft. -0.3% Ditch Grade El. 962.50 to 961.93

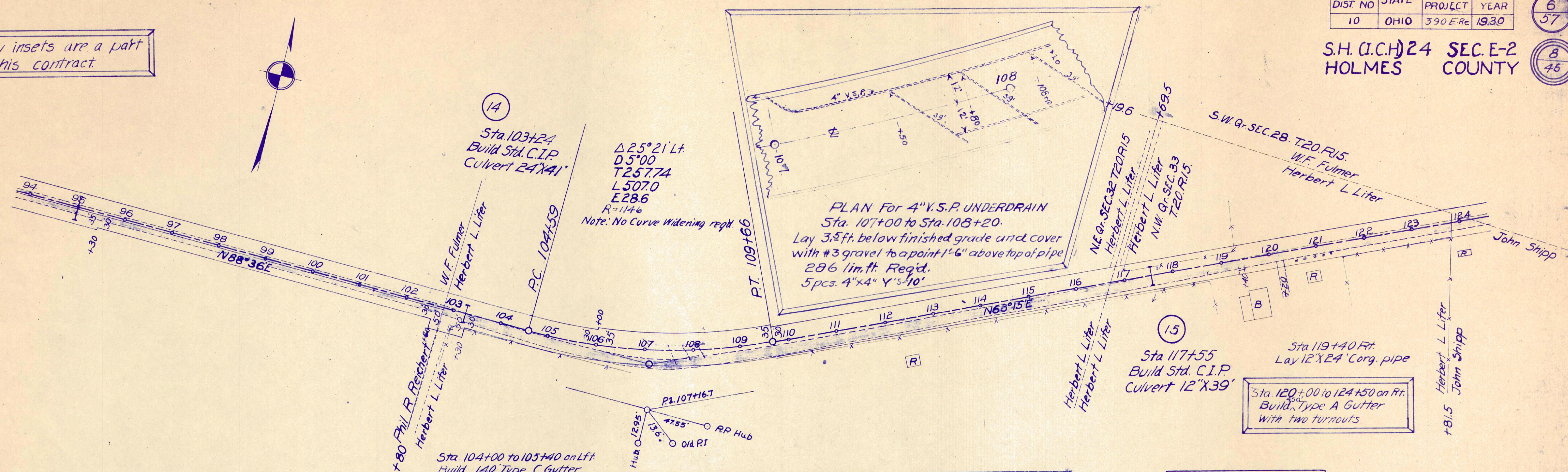
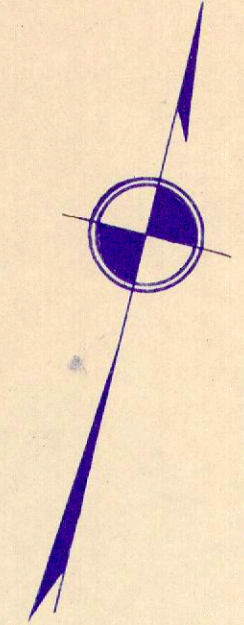
B.M. Sta. 82+70 100' Rt. spike in willow Elev. 964.62

B.M. Sta. 86+15 60' Rt. spike in W. Cherry Elev. 977.76

B.M. Sta. 91+90 30' Rt. spike in W. Cherry Elev. 987.71



Only insets are a part of this contract.



$\Delta 25^{\circ} 21' \text{ Lt}$
 $D 5^{\circ} 00'$
 $T 257.74$
 $L 507.0$
 $E 28.6$
 $R = 114.6$
 Note: No Curve Widening reqd.

PLAN For 4" V.S.P. UNDERDRAIN
 Sta. 107+00 to Sta. 108+20.
 Lay 3.5 ft. below finished grade und. cover
 with #3 gravel to a point 1'-6" above top of pipe
 286 lin. ft. Req'd.
 5 pcs. 4" x 4" Y's @ 10'

Sta. 117+55
 Build Std. C.I.P.
 Culvert 12" x 39'

Sta. 120+00 to 124+50 on Rt.
 Build Type A Gutter
 with two turnouts

Sta. 104+00 to 105+40 on Lft.
 Build 140 Type C Gutter

Sta. 105+40 to 108+25 on Lft.
 build 285 Type B Gutter.

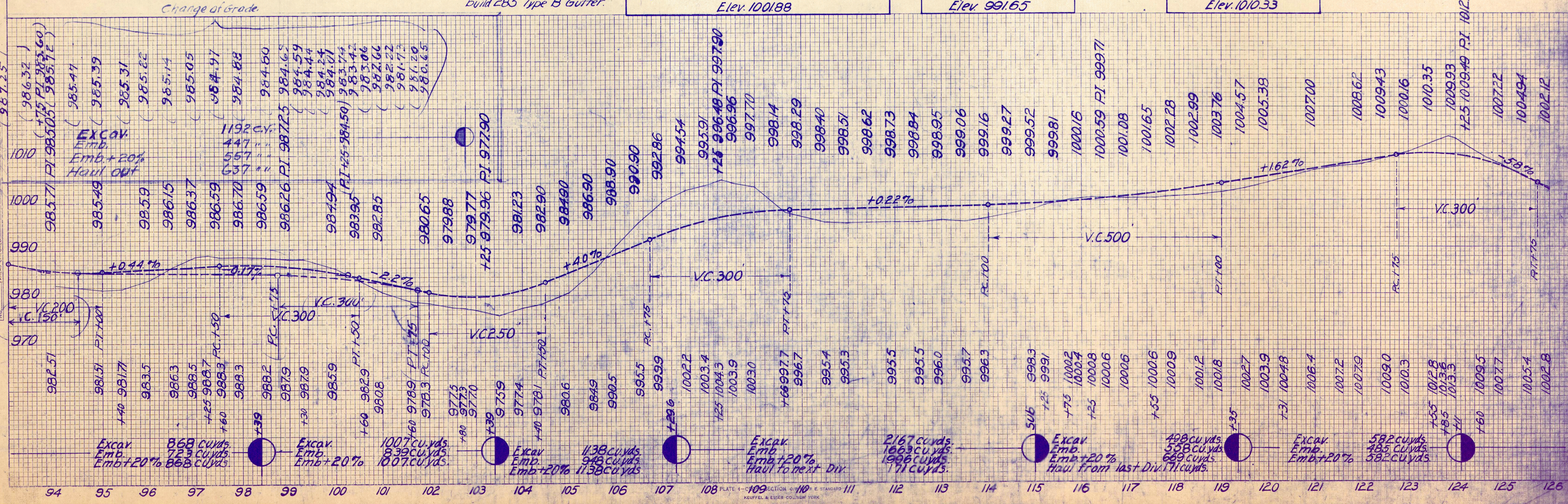
B.M. 60' Ft. Sta. 108+00
 Top corner stone N.W. cor. old Barn wall
 Elev. 1001.88

B.M. 50' Ft. Sta. 112+20
 spike in root 18" maple
 Elev. 991.65

B.M. Sta. 120+80
 24' Ft. top stone step
 Elev. 1010.33

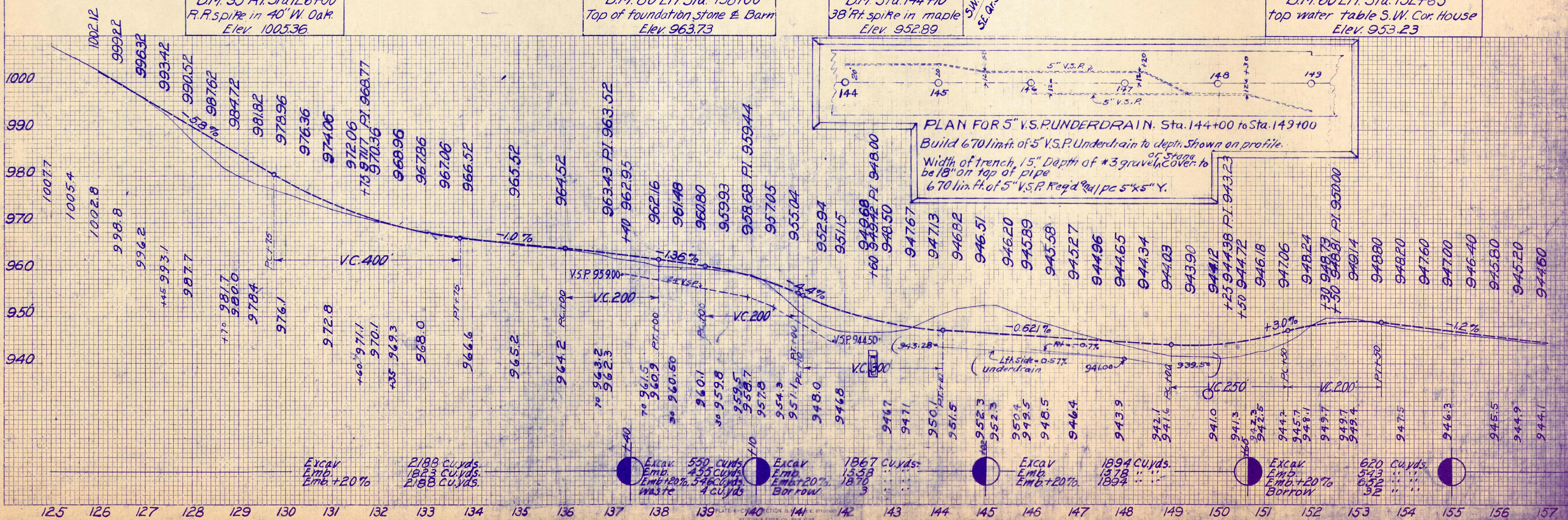
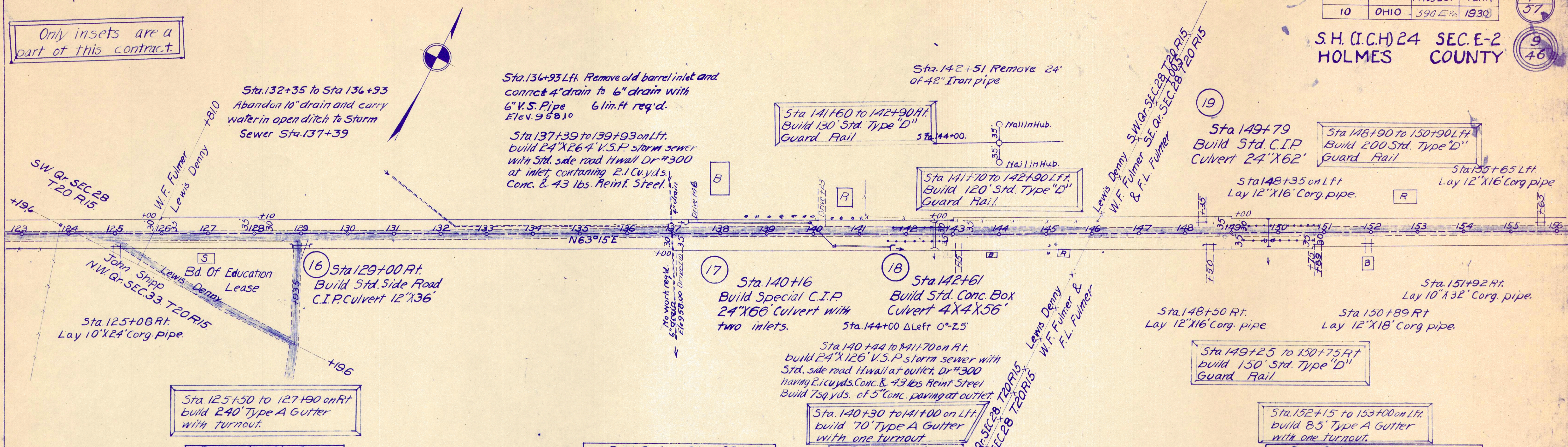
FINAL SURVEY PLOTTED AREAS CHECKED

ORIGINAL SURVEY PLOTTED AREAS CHECKED



Only insets are a part of this contract.

DATE	
BY	
SURVEYED	
PLANNED	
TEMPLATE	
NOTE BOOK	
AREAS CHECKED	
NO.	



FED. AID DIST. NO.	STATE	FED. AID PROJECT	FISCAL YEAR
10	OHIO	390E-R2	1930

8
57

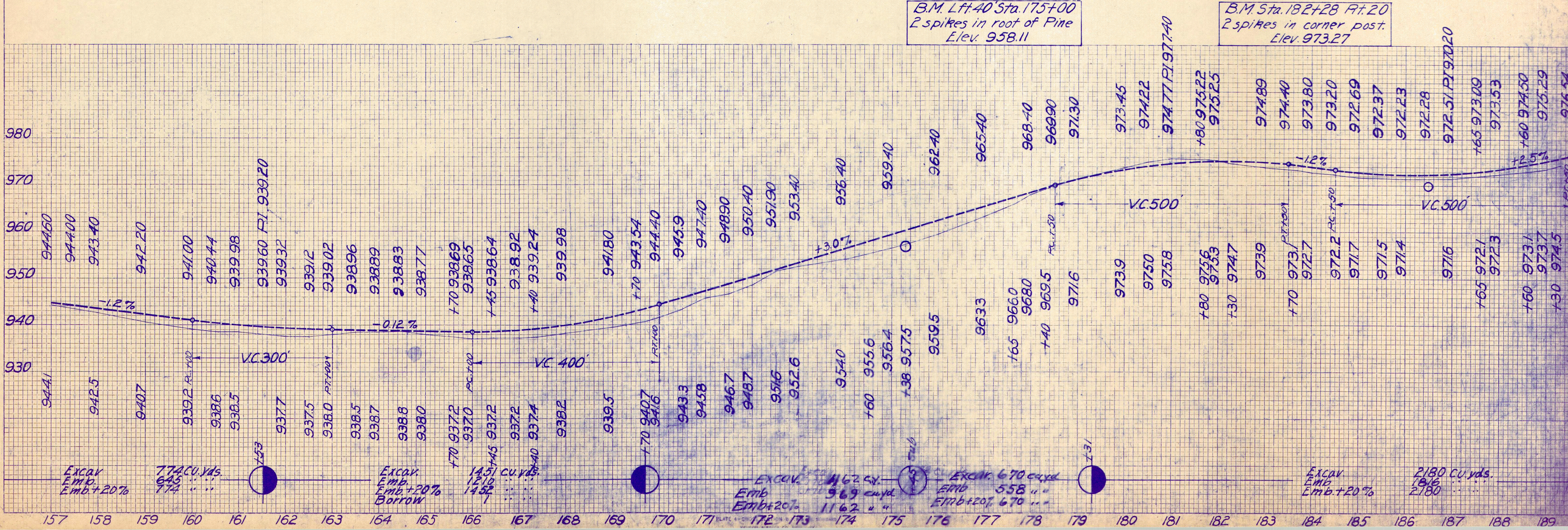
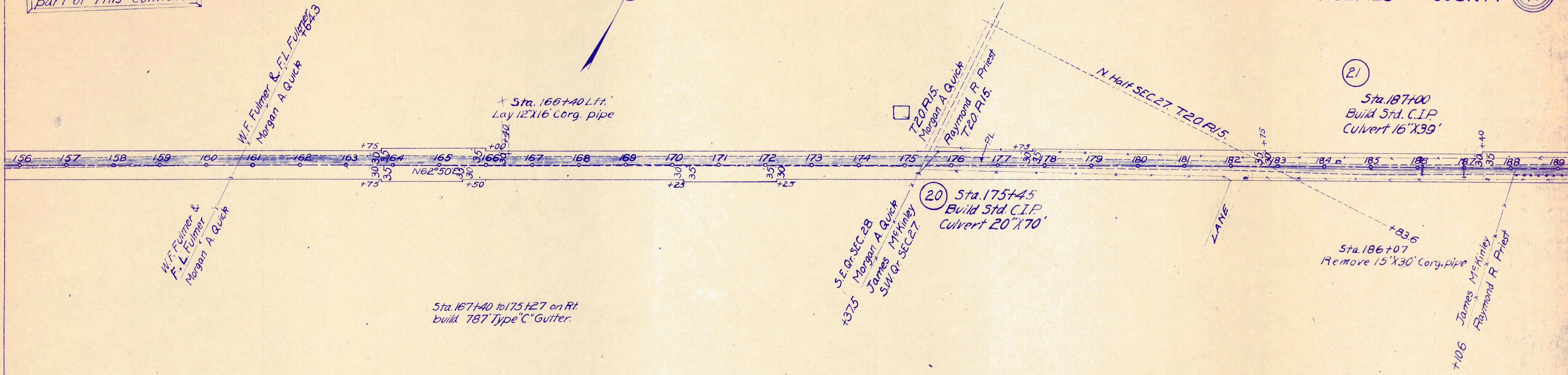
S.H. (I.C.H.) 24 SEC. E-2
HOLMES COUNTY.

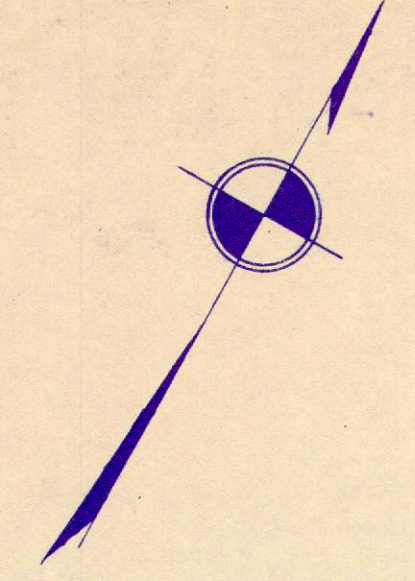
10
46

Only insets are a part of this contract

FINAL SURVEY	DATE
SUPPLIED	
NOTE BOOK	
AREAS CHECKED	

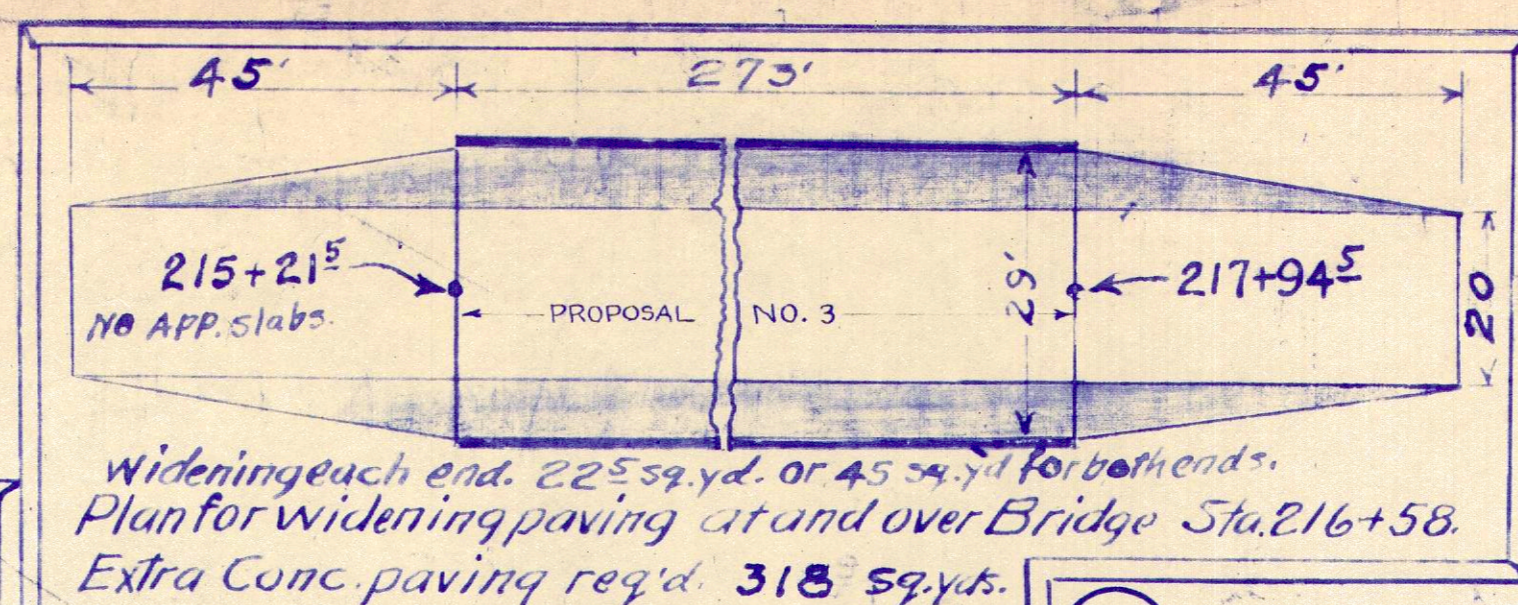
ORIGINAL SURVEY	DATE
SUPPLIED	
NOTE BOOK	
AREAS CHECKED	





DATE _____
 BY _____
 SURVEY PLOTTED _____
 FINAL SURVEY NOTE BOOK TEMPLATE AREAS CHECKED _____

DATE _____
 BY _____
 ORIGINAL SURVEY PLOTTED _____
 FINAL SURVEY NOTE BOOK TEMPLATE AREAS CHECKED _____



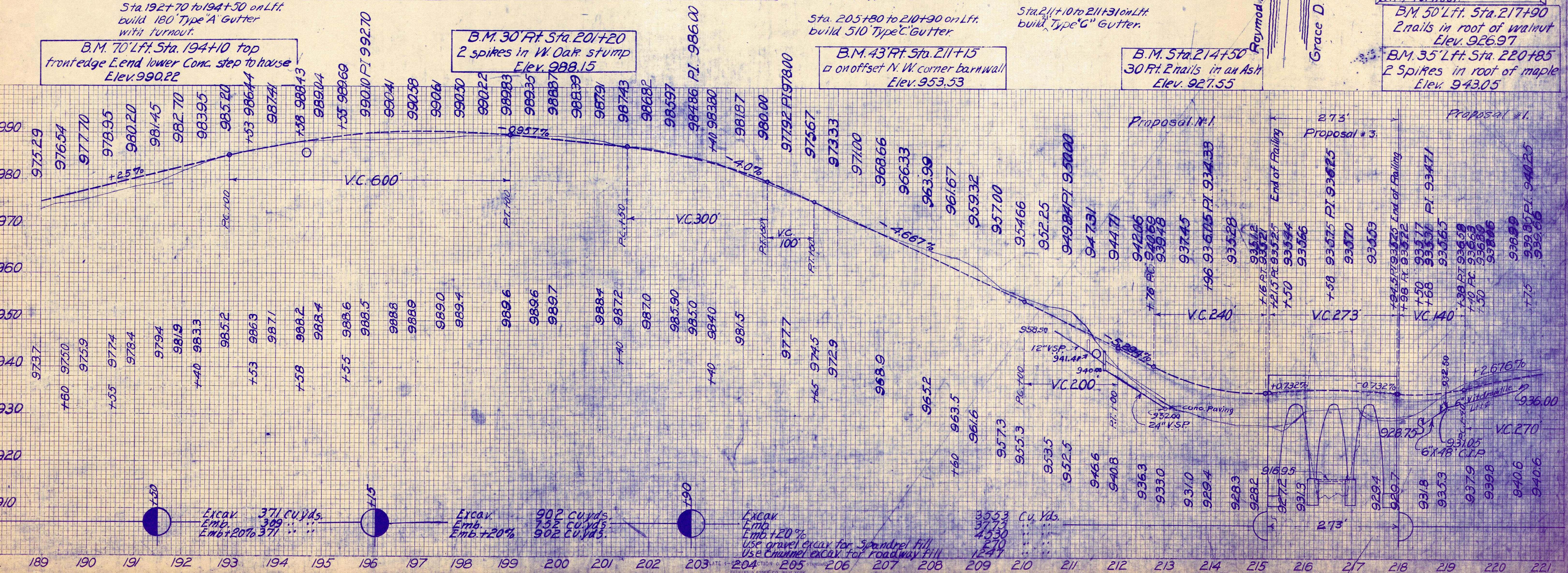
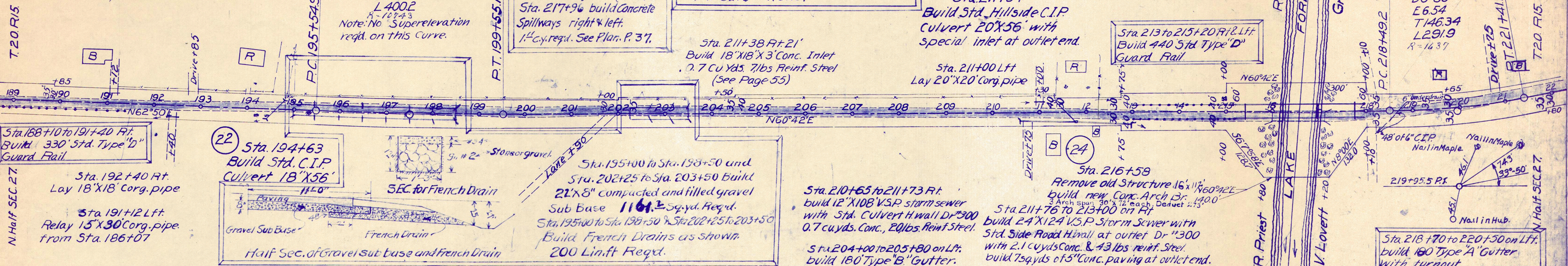
Sta. 218+85 to 220+50 Lft.
 Lay 16.5' of 6" vit pipe under drain complete.
 Sta. 218+51 Rt. 24'
 Lay 6'x48" C.I.P. on 45° skew connecting 6" under drain at 218+85 Lft

Only insets are a part of this contract

Sta. 215+20 build Concrete Spillways Right & Left. See Plan Page 37. (1.11 Cy.)
 Sta. 217+96 build Concrete Spillways right & left. 1.4 Cy. reqd. See Plan. P. 37.

23 Sta. 211+54 Build Std. Hillside C.I.P. Culvert 20'x56' with special inlet at outlet end.
 Sta. 211+38 Rt. 21' Build 18'x18'x3' Conc. Inlet .77 Cu Yds. 7 lbs Reinf. Steel (See Page 55)

Sta. 213 to 215+20 Rt. Lft. Build 440 Std Type 'D' Guard Rail



S.H. (I.C.H.) 24 SEC. E-2
S.H. (I.C.H.) 540 SEC. -A
HOLMES COUNTY

SUMMARY QUANTITIES

S.H. (I.C.H.) 540 SEC. -A

From Station	To Station	EXCAV.	EMB.	EMB+20%	WASTE	Use for Spandrel Fill	Haul to S.H. (I.C.H.) 24 Sec. E2
229+14	234+24.3	3389	528	634	29	300	2426

Only insets are a part of this contract

①
Left Sta 229+14.5 H. (I.C.H.) 540
Build Std. 12'X12' C.I.P.
Culvert with conc. inlet.

②⑤
Sta. 222+00
Build Std. 18'X48'
C.I.P. Culvert.

Sta. 222+42.8
Remove 12'X38" Corg. Pipe

Sta 222+67.5 remove 48 lin. ft
6" drain tile & lay 6'X48" C.I.P.

Sta. 221+41.1 Lt
Relay 12'X18" of Corg pipe
from Sta. 222+43

②⑥
Sta. 228+47
Build Std. 12'X12.5' C.I.P.
Culvert with Conc. inlet.

Sta. 229+65 Rt.
Relay 12'X32" Corg. Pipe
from Sta. 229+20 Lt.

B.M. 300' Ft. Sta. 229+00
offset on N.W. corner barn wall
Elev. 954.14

B.M. Spike in root of W. Cherry
100' Lt. Sta. 231+60
Elev. 958.81

Note: Sta. 234+24.3 Holmes
County S.H. (I.C.H.) 540 SEC. -A
equals Sta. 0+00 Ashland
County SEC. "D" S.H. (I.C.H.) 540

DATE
BY
SURVEY
NO. 100

DATE
BY
SURVEY
NO. 100

