

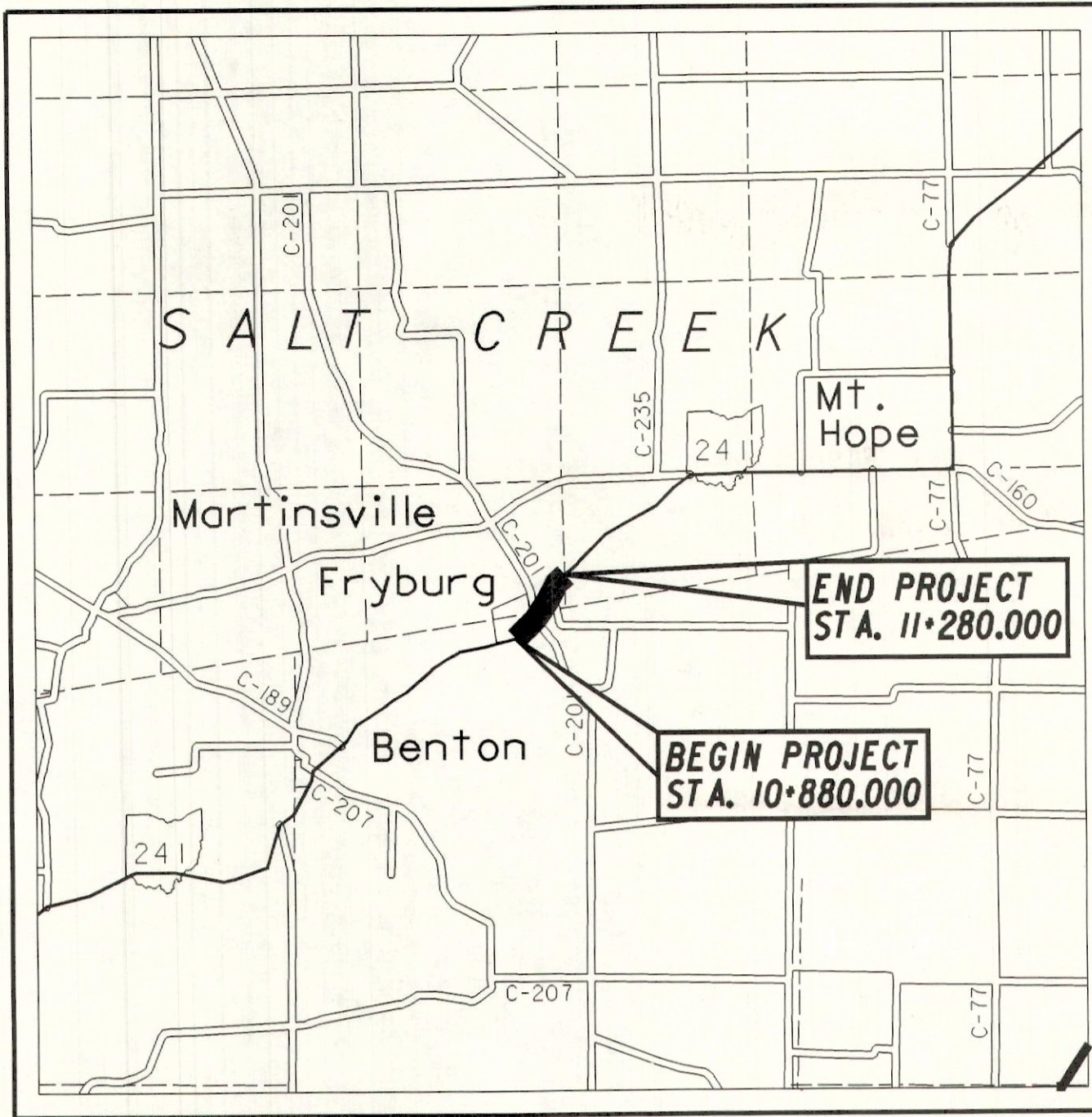


STATE OF OHIO
DEPARTMENT OF TRANSPORTATION

PROJECT DESCRIPTION
VERTICAL PROFILE CORRECTION OF S.R. 241 AT COUNTY ROAD 201 TO IMPROVE INTERSECTION SIGHT DISTANCE

HOL-241-10.813

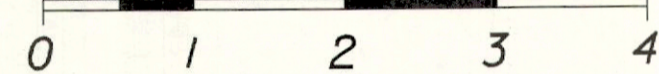
SALT CREEK TOWNSHIP
HOLMES COUNTY



LOCATION MAP

LATITUDE: 40° 36' 50" LONGITUDE: 81° 49' 30"

SCALE IN KILOMETERS



PORTION TO BE IMPROVED
STATE & FEDERAL ROUTES
OTHER ROADS

FOR DESIGN DESIGNATION SEE SHEET 2

DESIGN EXCEPTION

Table with 4 columns: DESIGN FEATURE, APPROVAL DATE, DESIGN FEATURE, APPROVAL DATE. Includes exceptions for S.R. 241 vertical alignment and Township Road 618 horizontal alignment.

INDEX OF SHEETS

- TITLE SHEET
SCHEMATIC PLAN
TYPICAL SECTIONS
PLAN & PROFILE

1997 SPECIFICATIONS
THE STANDARD SPECIFICATIONS OF THE STATE OF OHIO, DEPARTMENT OF TRANSPORTATION, INCLUDING CHANGES AND SUPPLEMENTAL SPECIFICATIONS LISTED IN THE PROPOSAL SHALL GOVERN THIS IMPROVEMENT.

I HEREBY APPROVE THESE PLANS AND DECLARE THAT THE MAKING OF THIS IMPROVEMENT WILL REQUIRE THE CLOSING TO TRAFFIC OF THE HIGHWAY AND THAT DETOURS WILL BE PROVIDED AS INDICATED ON THE PLANS.

UNDERGROUND UTILITIES
TWO WORKING DAYS BEFORE YOU DIG
CALL 1-800-362-2764 (TOLL FREE)
OHIO UTILITIES PROTECTION SERVICE
NON-MEMBERS
MUST BE CALLED DIRECTLY

PLAN PREPARED BY:
O.D.O.T.
DISTRICT 11
NEW PHILADELPHIA, OHIO

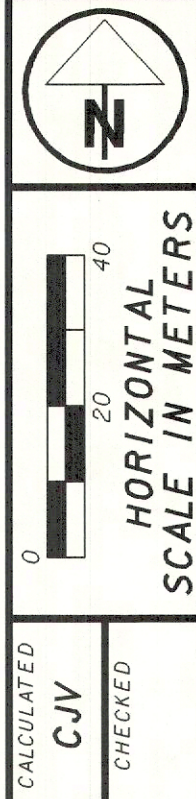
ENGINEERS SEAL:

SIGNED:
DATE:

Table with 5 columns: STANDARD CONSTRUCTION DRAWINGS, SUPPLEMENTAL SPECIFICATIONS, SPECIAL PROVISIONS.

APPROVED
DATE
DISTRICT DEPUTY DIRECTOR
APPROVED
DATE
DIRECTOR, DEPARTMENT OF TRANSPORTATION

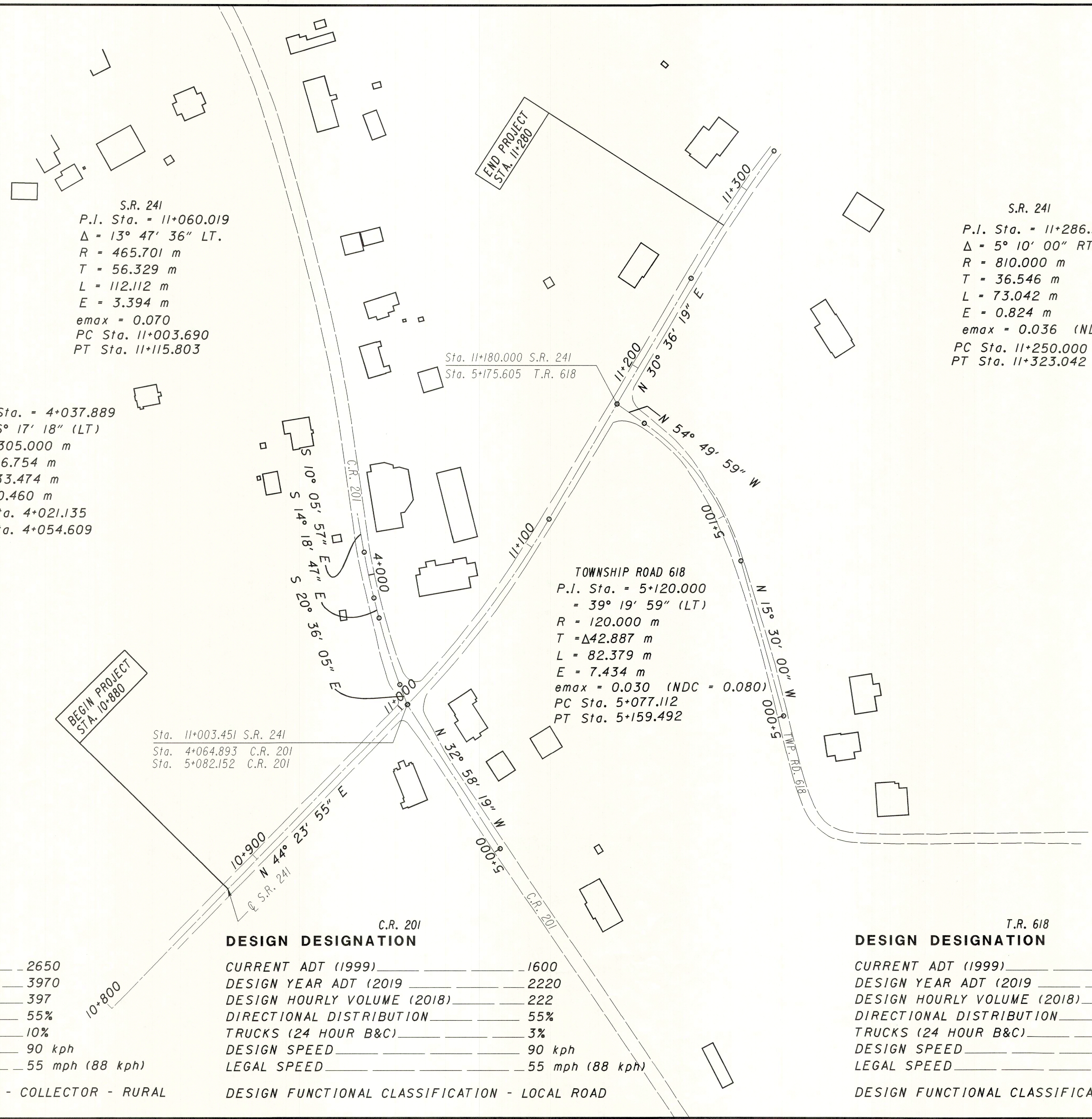
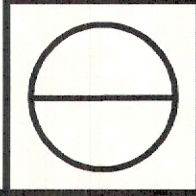
FEDERAL PROJECT NO. STP
P.D. NO. 17642
CONSTRUCTION PROJECT NO.
RAILROAD INVOLVEMENT NONE
HOL-241-10.813



CALCULATED  
CIV  
CHECKED

**SCHEMATIC PLAN**

**HOL - 241 - 10.381**



S.R. 241  
 P.I. Sta. = 11+060.019  
 $\Delta = 13^\circ 47' 36''$  LT.  
 R = 465.701 m  
 T = 56.329 m  
 L = 112.112 m  
 E = 3.394 m  
 e<sub>max</sub> = 0.070  
 PC Sta. 11+003.690  
 PT Sta. 11+115.803

S.R. 241  
 P.I. Sta. = 11+286.546  
 $\Delta = 5^\circ 10' 00''$  RT.  
 R = 810.000 m  
 T = 36.546 m  
 L = 73.042 m  
 E = 0.824 m  
 e<sub>max</sub> = 0.036 (NDC = 0.048)  
 PC Sta. 11+250.000  
 PT Sta. 11+323.042

COUNTY ROAD 201

P.I. Sta. = 4+000.000	P.I. Sta. = 4+037.889
$\Delta = 4^\circ 12' 50''$ (LT)	$\Delta = 6^\circ 17' 18''$ (LT)
R = 305.000 m	R = 305.000 m
T = 11.221 m	T = 16.754 m
L = 22.432 m	L = 33.474 m
E = 0.206 m	E = 0.460 m
PC Sta. 3+998.779	PC Sta. 4+021.135
PT Sta. 4+011.211	PT Sta. 4+054.609

TOWNSHIP ROAD 618  
 P.I. Sta. = 5+120.000  
 $\Delta = 39^\circ 19' 59''$  (LT)  
 R = 120.000 m  
 T =  $\Delta 42.887$  m  
 L = 82.379 m  
 E = 7.434 m  
 e<sub>max</sub> = 0.030 (NDC = 0.080)  
 PC Sta. 5+077.112  
 PT Sta. 5+159.492

Sta. 11+003.451 S.R. 241  
 Sta. 4+064.893 C.R. 201  
 Sta. 5+082.152 C.R. 201

S.R. 241

**DESIGN DESIGNATION**

CURRENT ADT (1999)	2650
DESIGN YEAR ADT (2019)	3970
DESIGN HOURLY VOLUME (2018)	397
DIRECTIONAL DISTRIBUTION	55%
TRUCKS (24 HOUR B&C)	10%
DESIGN SPEED	90 kph
LEGAL SPEED	55 mph (88 kph)
DESIGN FUNCTIONAL CLASSIFICATION - COLLECTOR - RURAL	

C.R. 201

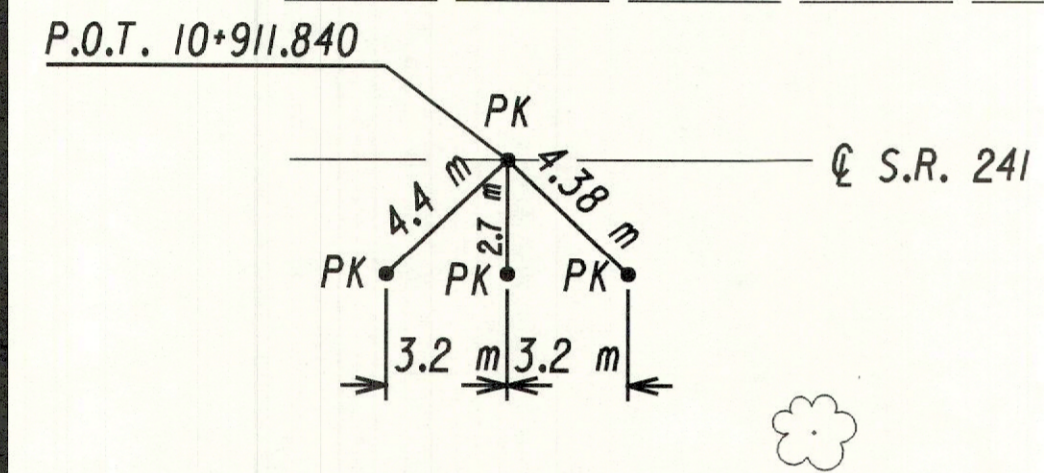
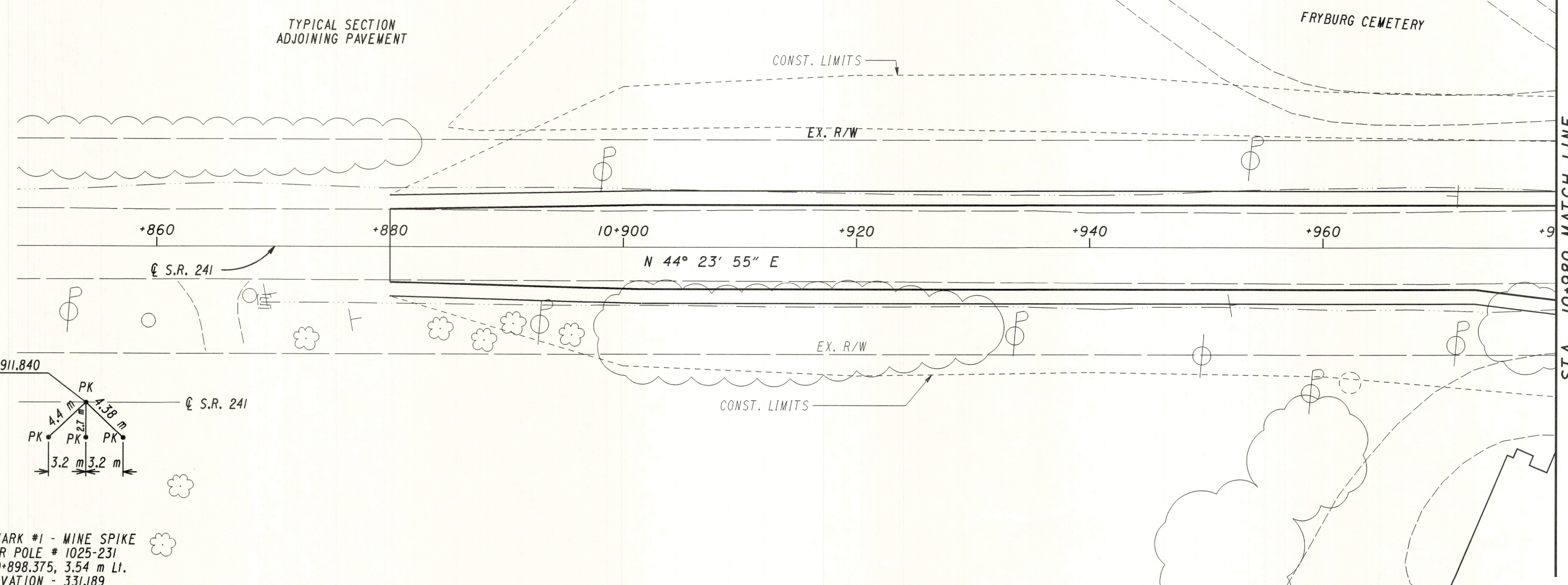
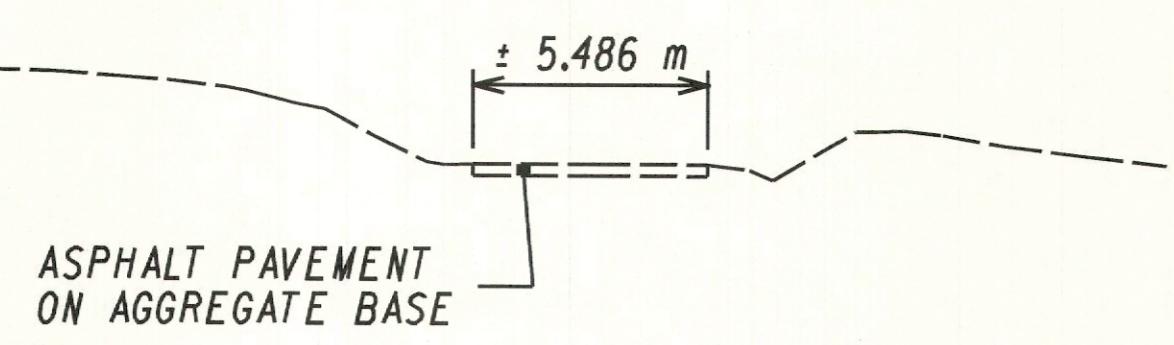
**DESIGN DESIGNATION**

CURRENT ADT (1999)	1600
DESIGN YEAR ADT (2019)	2220
DESIGN HOURLY VOLUME (2018)	222
DIRECTIONAL DISTRIBUTION	55%
TRUCKS (24 HOUR B&C)	3%
DESIGN SPEED	90 kph
LEGAL SPEED	55 mph (88 kph)
DESIGN FUNCTIONAL CLASSIFICATION - LOCAL ROAD	

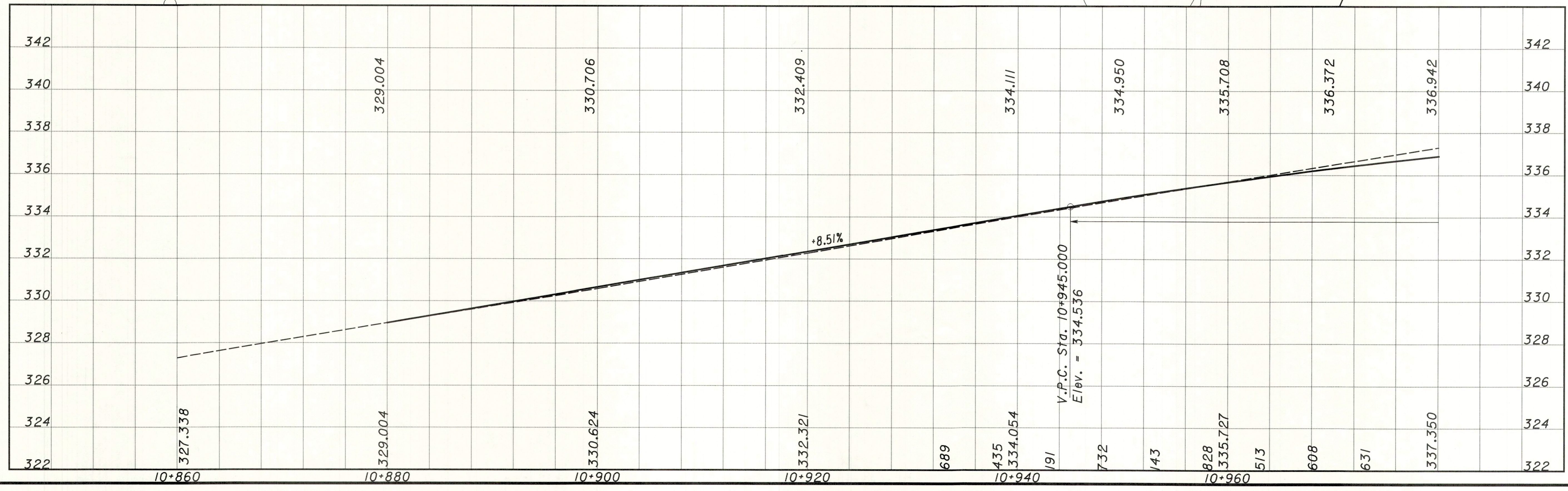
T.R. 618


**DESIGN DESIGNATION**

CURRENT ADT (1999)	80
DESIGN YEAR ADT (2019)	100
DESIGN HOURLY VOLUME (2018)	10
DIRECTIONAL DISTRIBUTION	55%
TRUCKS (24 HOUR B&C)	3%
DESIGN SPEED	90 kph
LEGAL SPEED	55 mph (88 kph)
DESIGN FUNCTIONAL CLASSIFICATION - LOCAL ROAD	



BENCH MARK #1 - MINE SPIKE  
 POWER POLE # 1025-231  
 STA. 10+898.375, 3.54 m Lt.  
 ELEVATION - 331.189



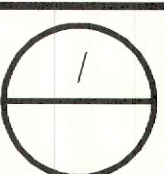


8  
4  
0  
HORIZONTAL SCALE IN METERS  
200 m = 1 in

CALCULATED  
CJV  
CHECKED

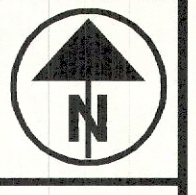
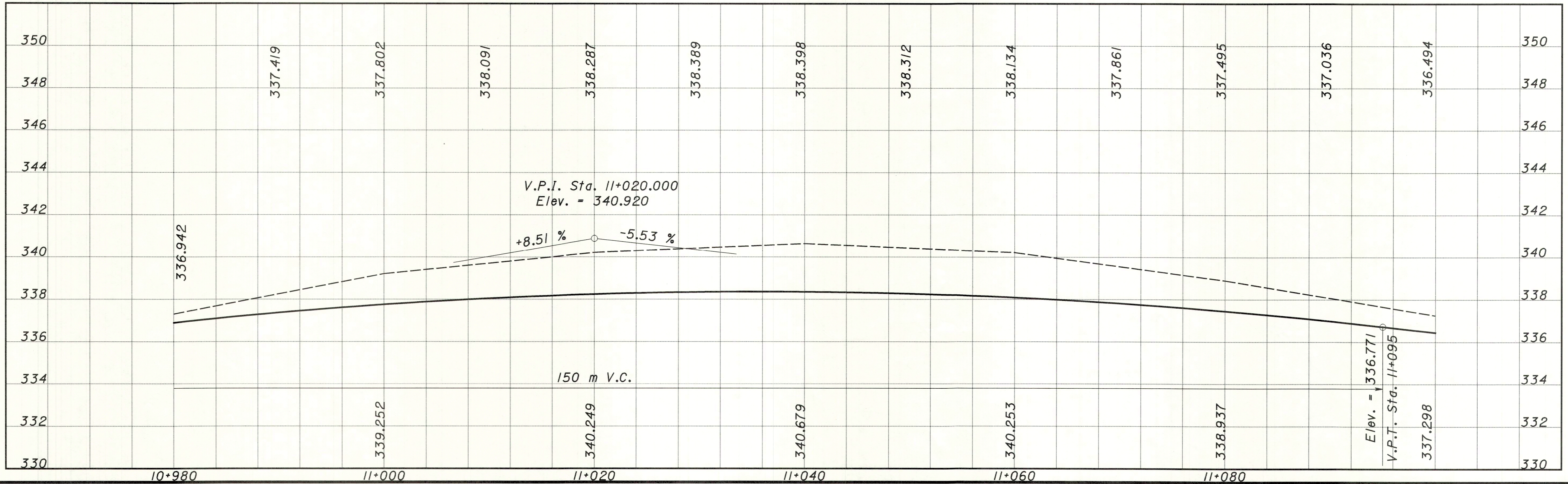
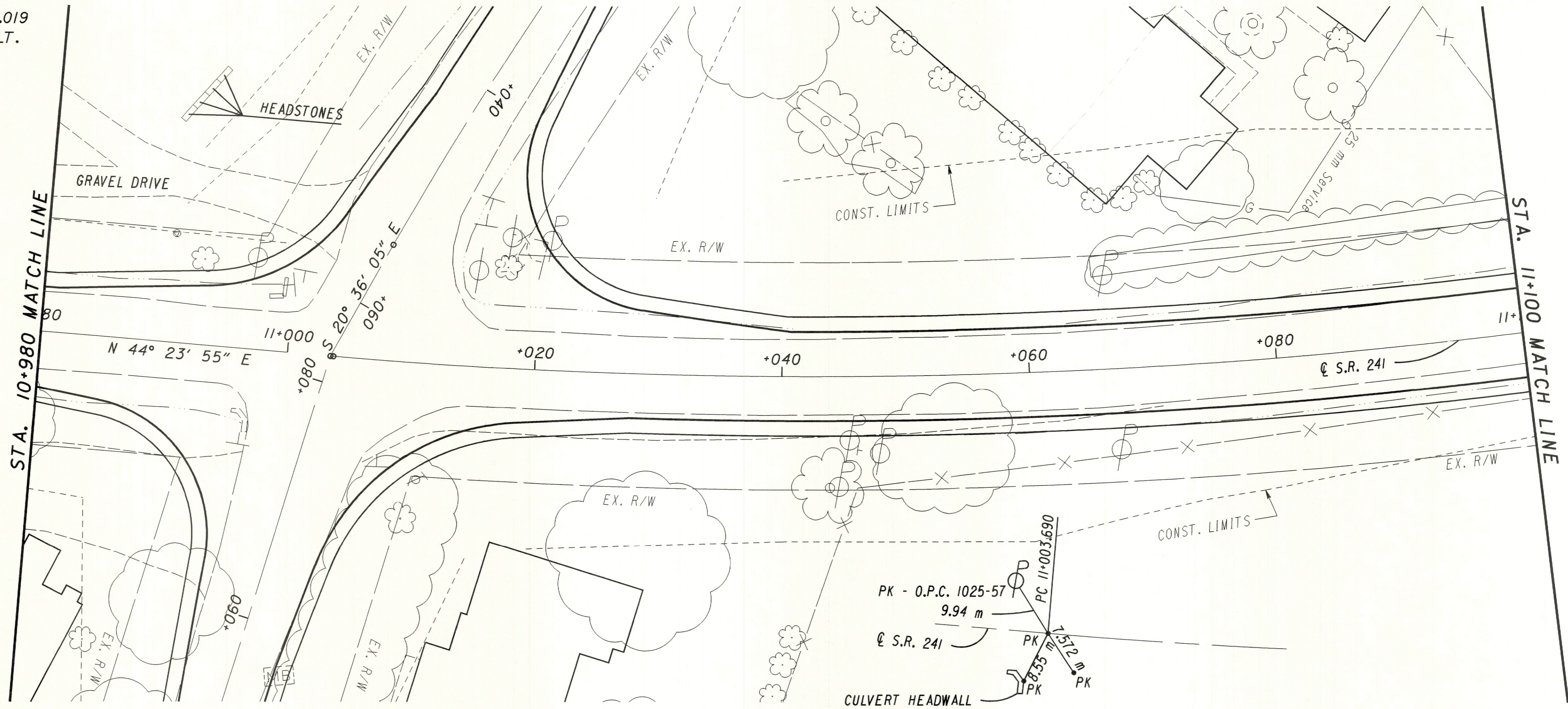
**PLAN AND PROFILE**  
**STA. 10+860 - STA. 10+980**

**HOL-241-10.831**



P.I. Sta. = 11+060.019  
 $\Delta = 13^\circ 47' 36''$  LT.  
 $R = 465.701$  m  
 $T = 56.329$  m  
 $L = 112.112$  m  
 $E = 3.394$  m  
 $e_{max} = 0.070$   
 PC - STA. 11+003.690  
 PT - STA. 11+115.803

NGS DISK  
 STA. 10+990.299, 8.755 m Lt.  
 ELEVATION 339.115

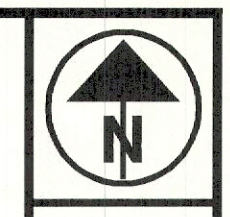


HORIZONTAL  
 SCALE 1:1000  
 200 FT (61.0 M)

CALCULATED  
 C/V  
 CHECKED

PLAN AND PROFILE  
 STA. 10+980 - STA. 11+100

HOL-241-10.831

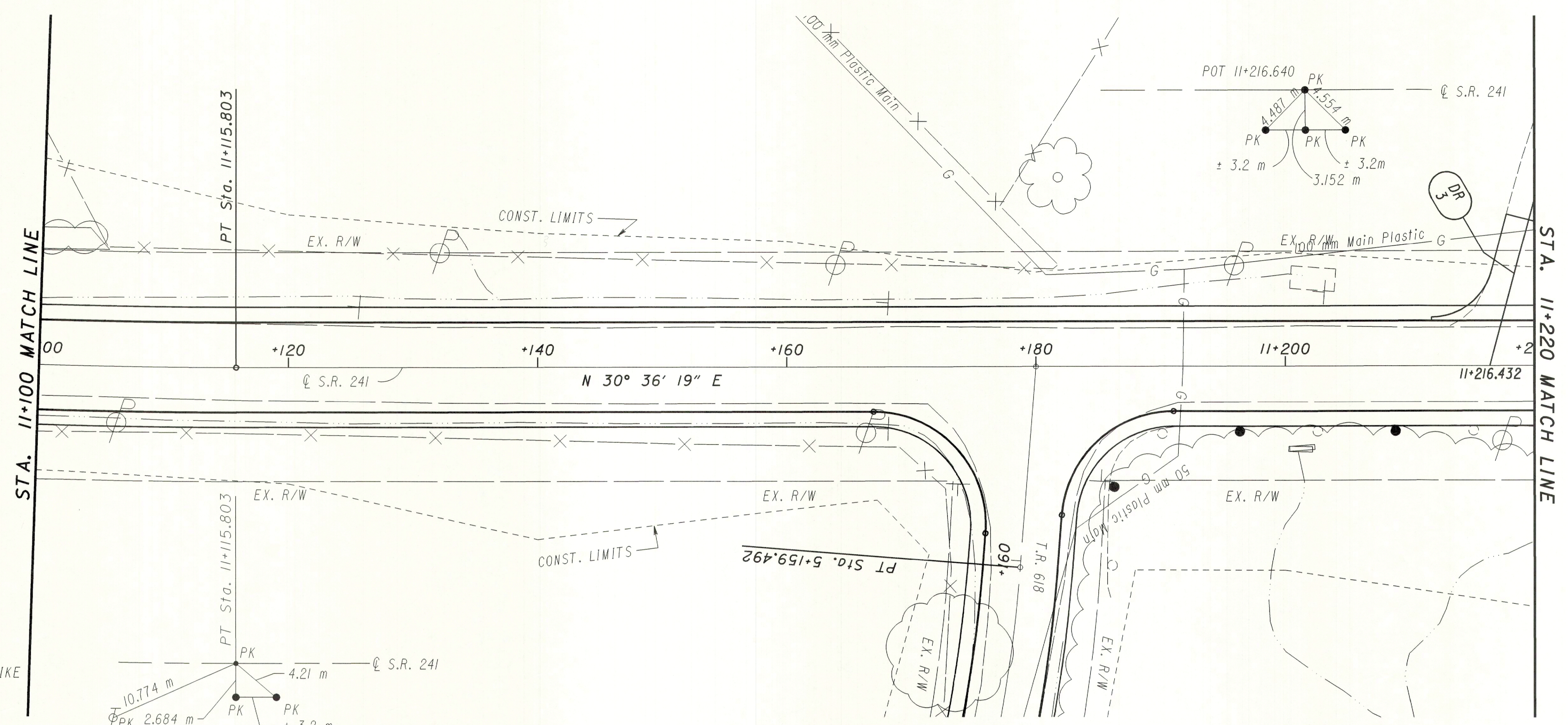
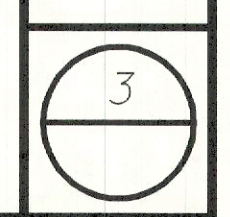


HORIZONTAL SCALE 1:1000  
VERTICAL SCALE 1:100

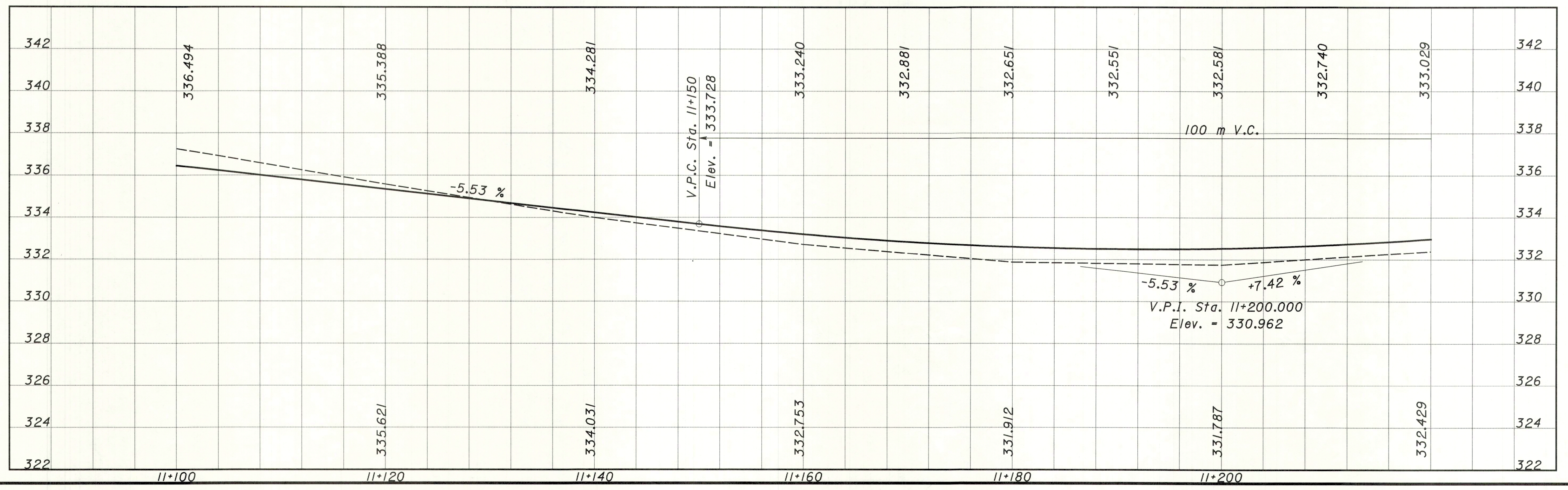
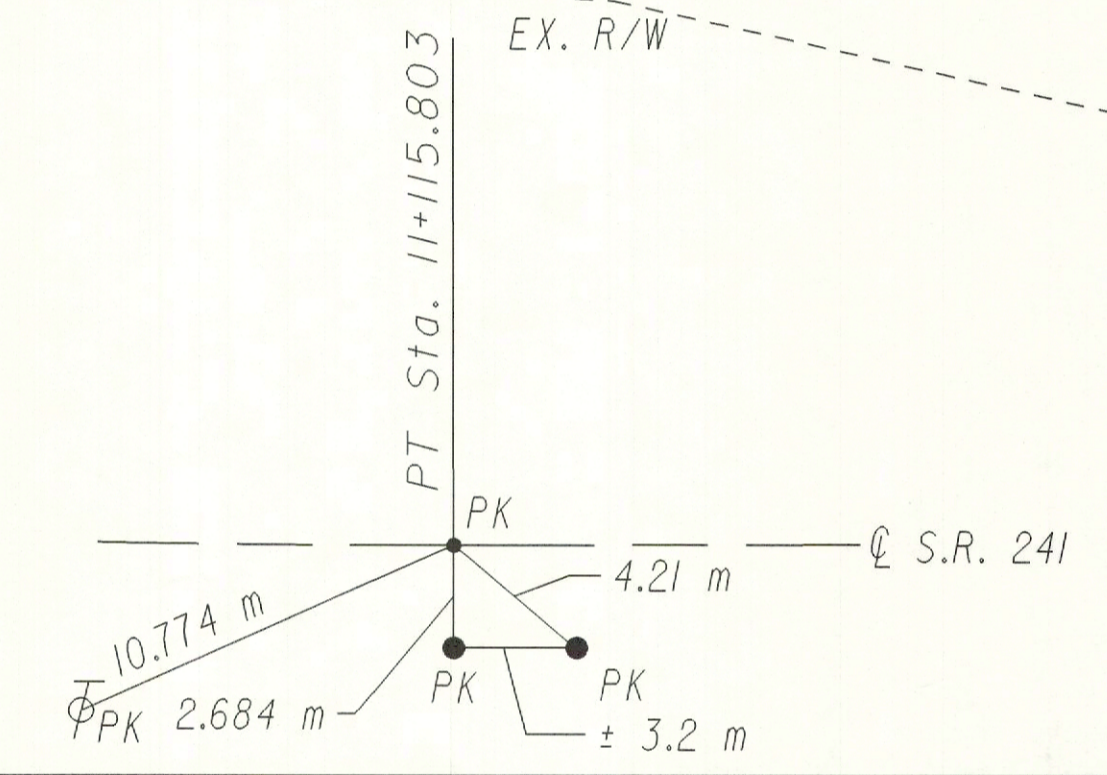
CALCULATED  
CJV  
CHECKED

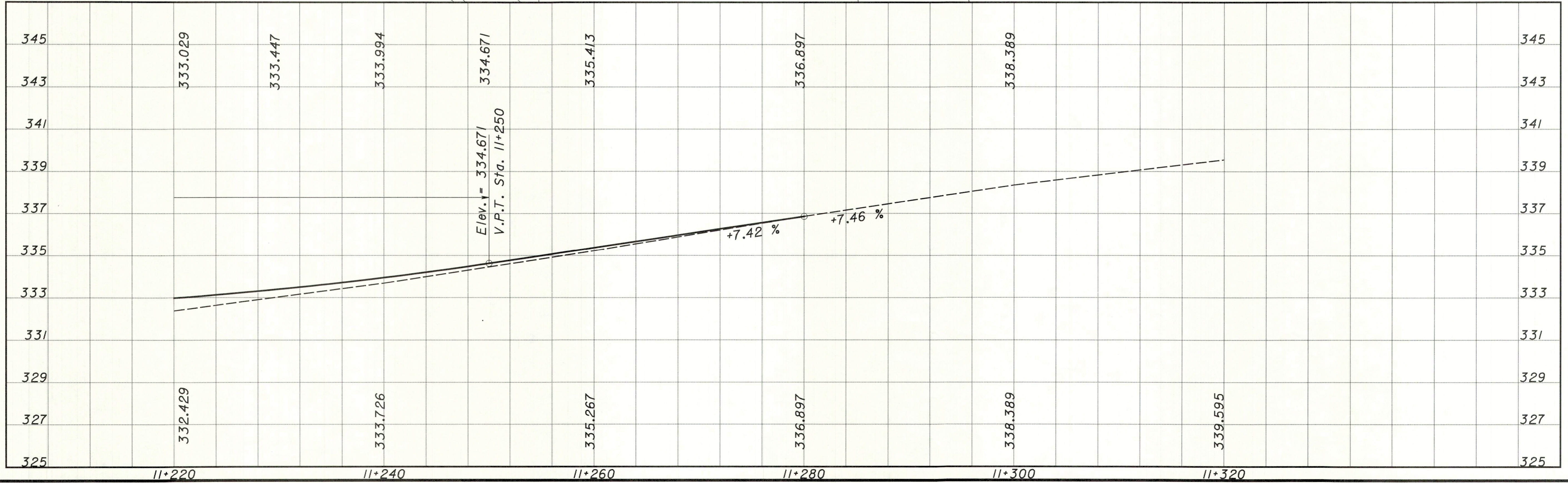
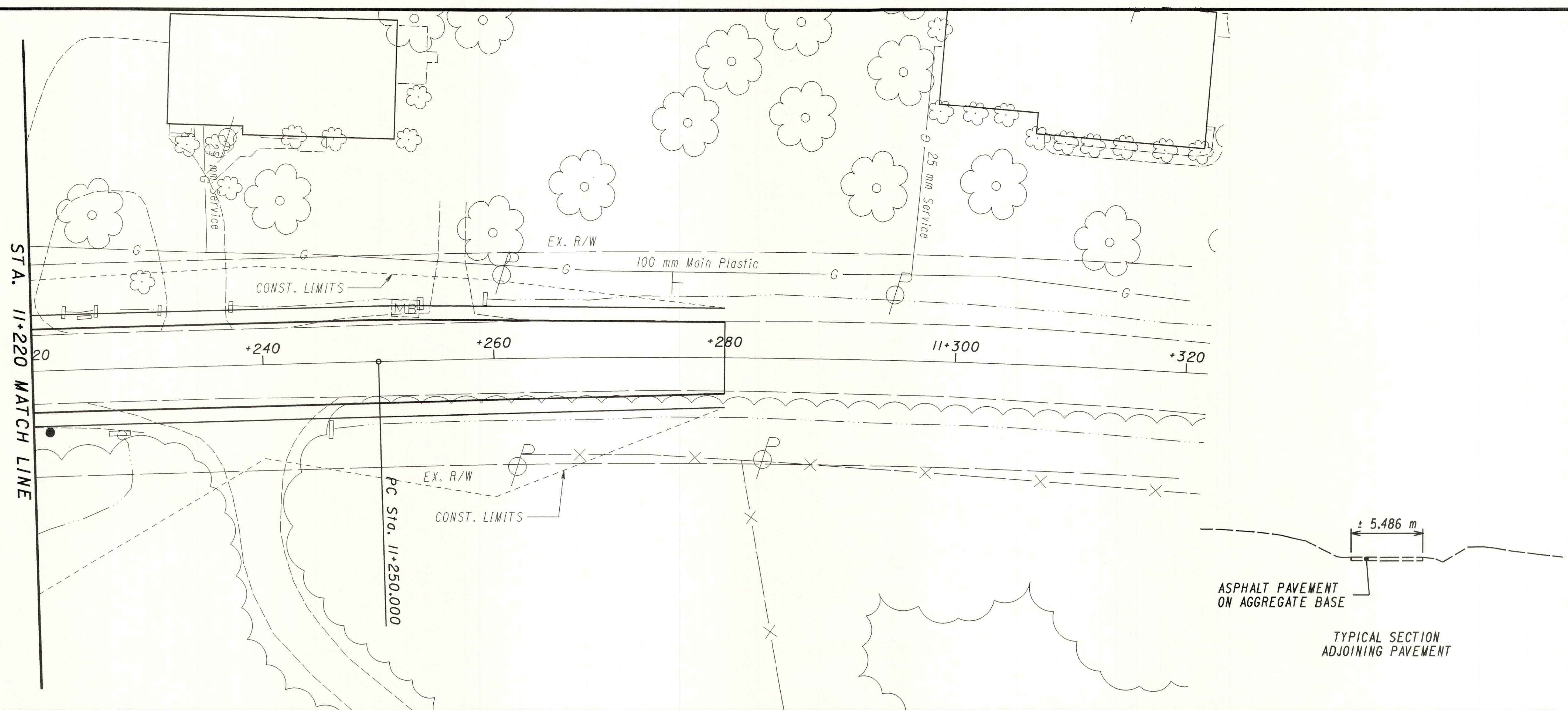
# PLAN AND PROFILE STA. 11+100 - STA. 11+220

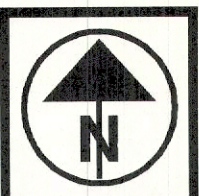
HOL-241-10.831



BENCH MARK # 2 - MINE SPIKE  
TELEPHONE POLE  
STA. 11+166.119, 5.484 m Rt.  
ELEVATION 332.070





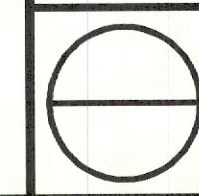


HORIZONTAL  
SCALE  
1:2000

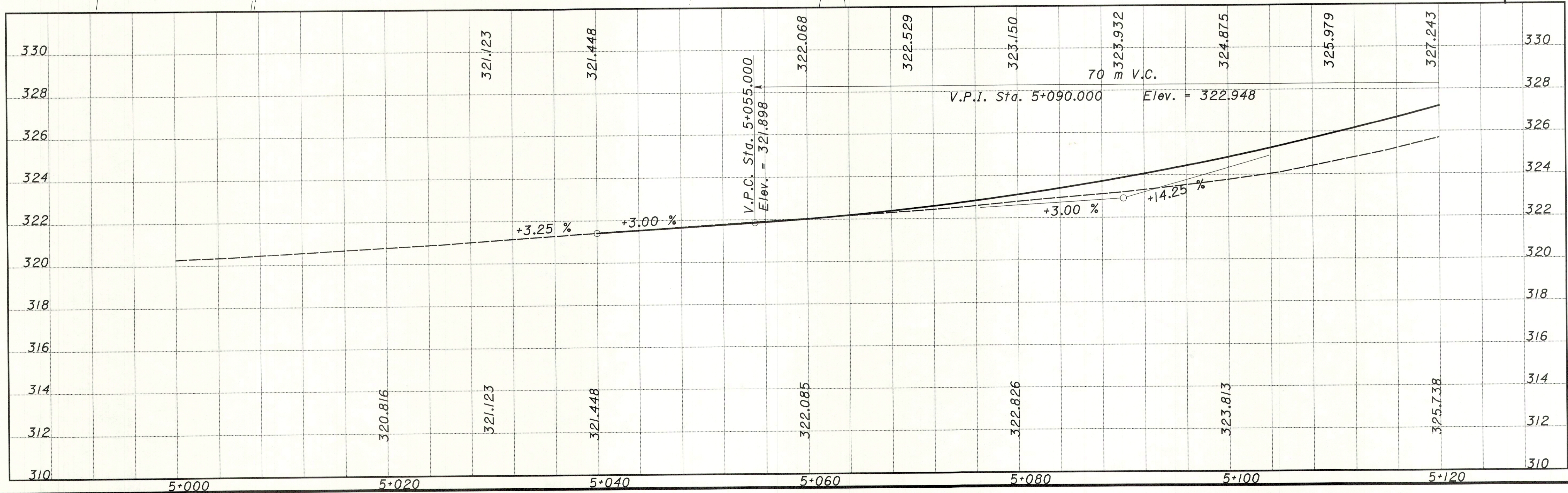
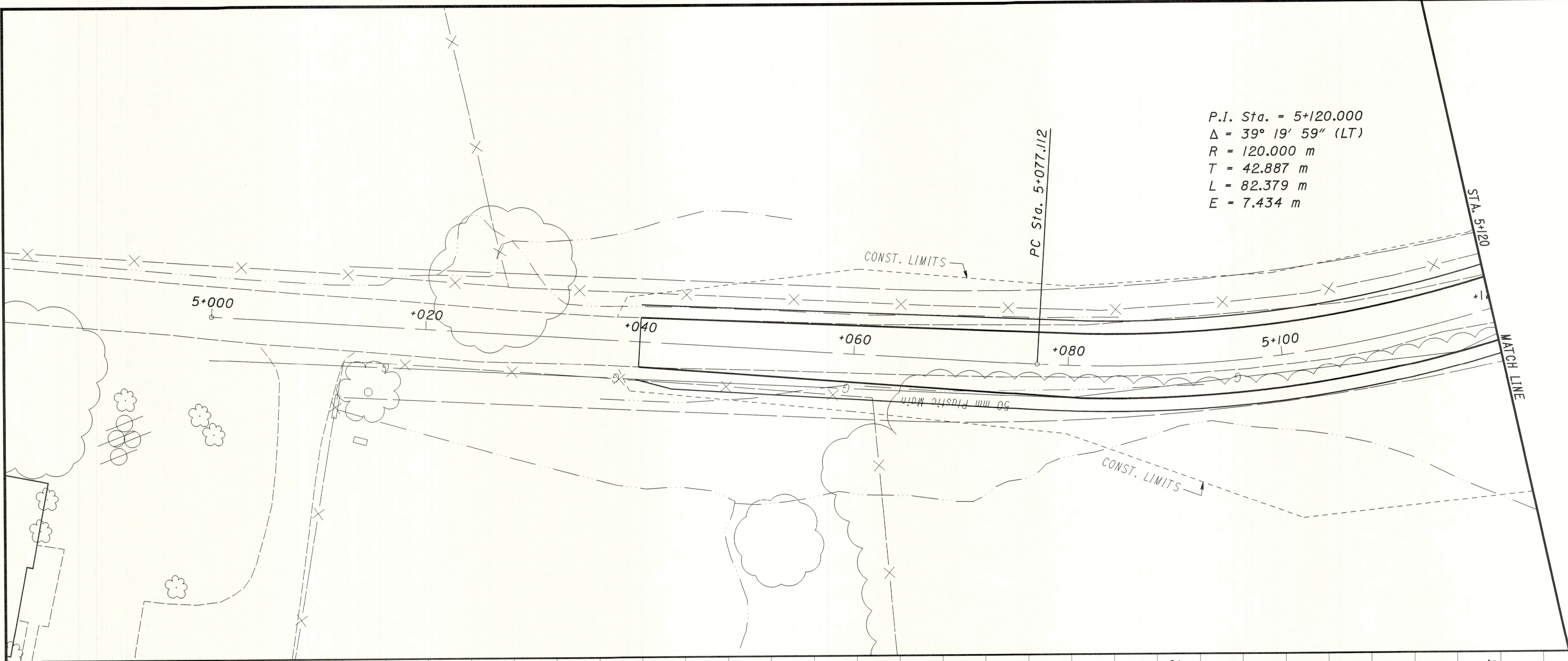
CALCULATED  
CJV  
CHECKED

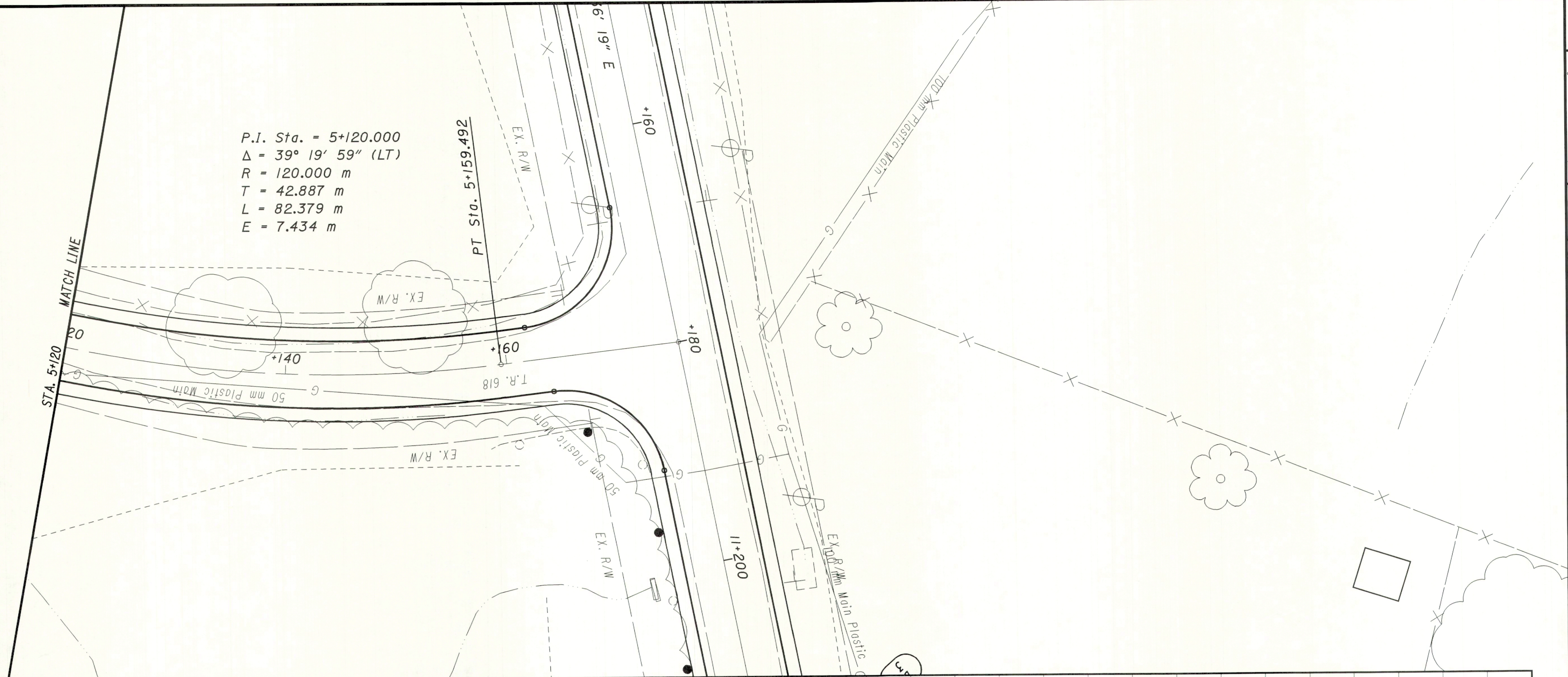
PLAN AND PROFILE  
T.R. 618 STA. 5+100 TO STA. 5+120

HOL-241-10.831

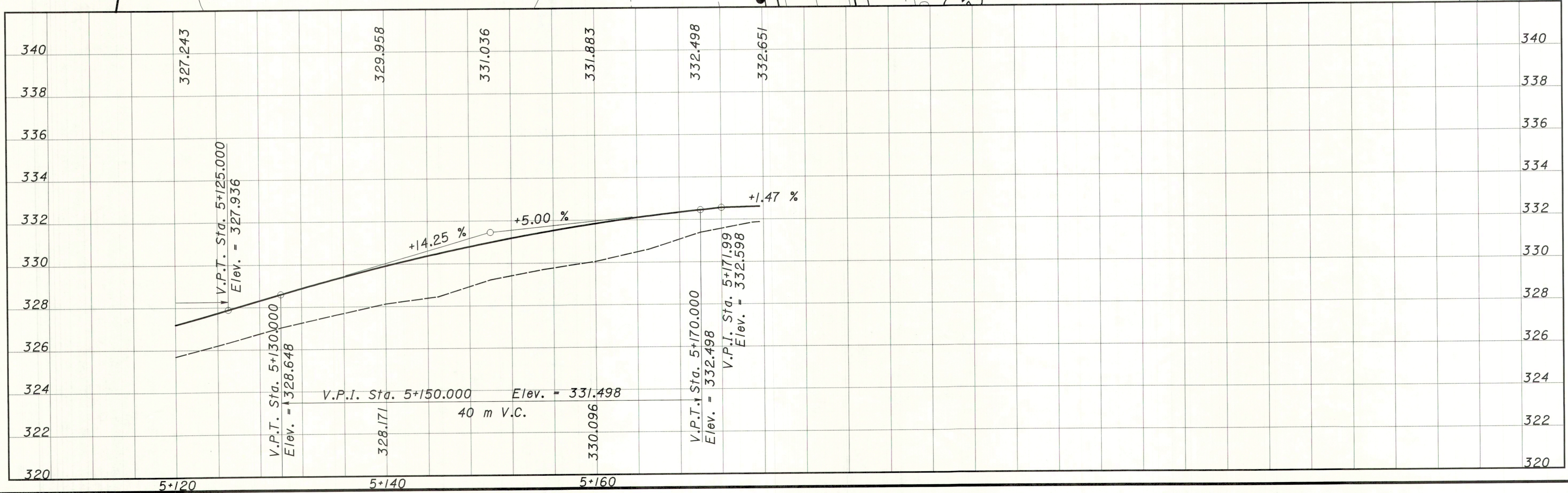


P.I. Sta. = 5+120.000  
 $\Delta = 39^\circ 19' 59''$  (LT)  
R = 120.000 m  
T = 42.887 m  
L = 82.379 m  
E = 7.434 m

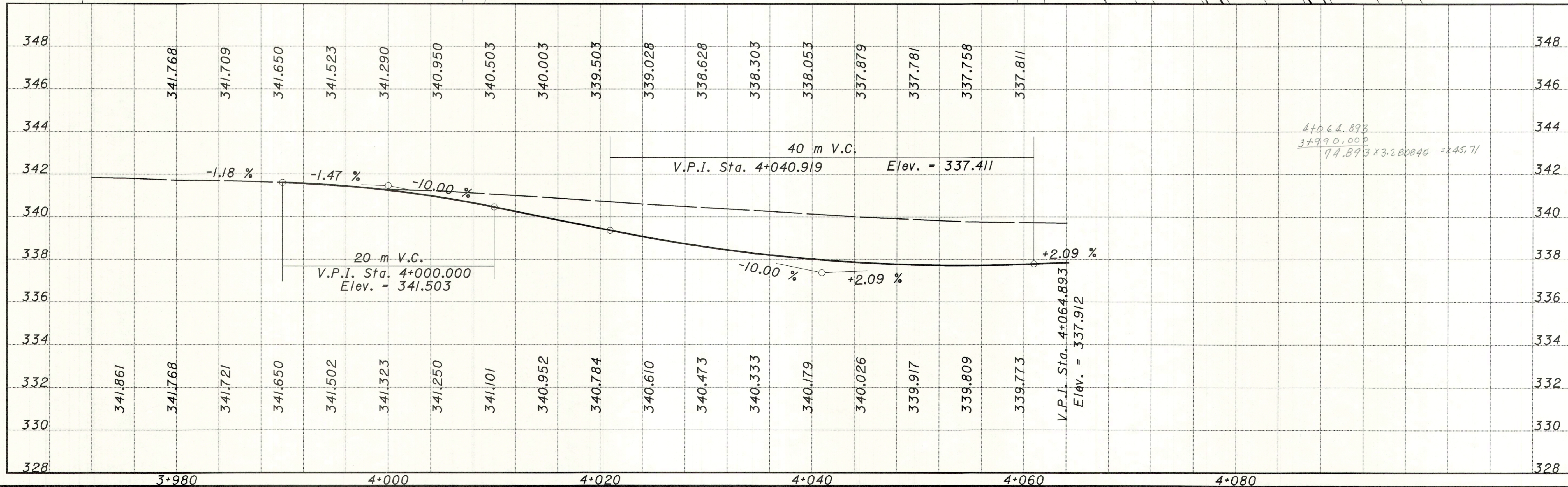
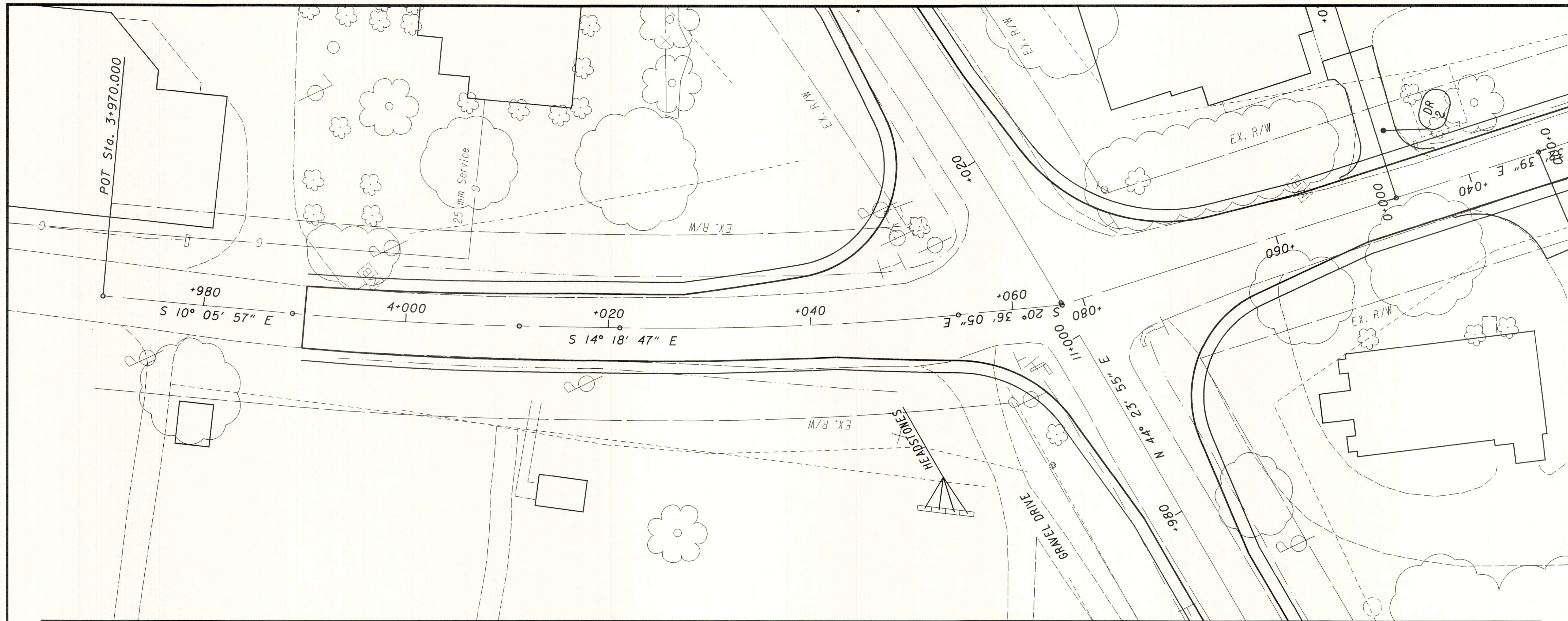




P.I. Sta. = 5+120.000  
 $\Delta = 39^\circ 19' 59''$  (LT)  
 $R = 120.000$  m  
 $T = 42.887$  m  
 $L = 82.379$  m  
 $E = 7.434$  m









HORIZONTAL SCALE IN METERS 200:1 (AS SHOWN)

CALCULATED  
CJV  
CHECKED

PLAN AND PROFILE  
COUNTY ROAD 201 STA. 5+000 TO STA. 5+078.464

HOL-241-10.831

