

CH 320 No. 10

STATE OF OHIO DEPARTMENT OF HIGHWAYS

DS-927(4)

FED. RD. DIVISION	STATE	PROJECT			
2	OHIO	DS-927(4)			1 10

HOLMES COUNTY
COUNTY RD. NO. 320

COUNTY ROAD NO. 320

HOLMES COUNTY

PRAIRIE TOWNSHIP

We, the Commissioners of Holmes County, in formal session hereby approve these plans and certify that the necessary right of way is available. We agree to maintain the project in a manner satisfactory to the Director of Highways, State of Ohio, or his duly authorized representatives and will make ample provision each year for such maintenance.

Done under authority of Sections 5535.01 and 5555.02 et seq. of the Revised Code of Ohio.

BOARD OF COMMISSIONERS, HOLMES CO.

8-25-58
Date

Carl A. Kirk
John S. Slaughter
A. M. Hill

The Standard Specifications of the State of Ohio Department of Highways, in force on date of contract together with supplemental specifications listed hereon will govern this improvement

I hereby approve these plans and declare that the making of this improvement will require the closing to traffic of the highway, except as noted on Sheet 3, and that detours will be provided as indicated on the plans.

Approved *N. H. Palmer*
Date 8-25-58 County Engineer

Approved *W. C. Zink*
Date 8-26-58 Division Deputy Director

Approved *C. W. Sawyer*
Date 9-24-58 Deputy Director of Planning and Programming

Approved *L. A. Carrman*
Date 9-17-58 Engineer of Bridges

Approved *R. E. Shultz*
Date 9-23-58 Engineer of Location & Design

Approved *R. E. Masteter*
Date 9-23-58 Deputy Director of Design & Construction

Approved *George J. Flannery*
Date 9-24-58 First Assistant Director

Approved *W. C. Zink*
Date 12-4-58 Director of Highways

LINE DATA

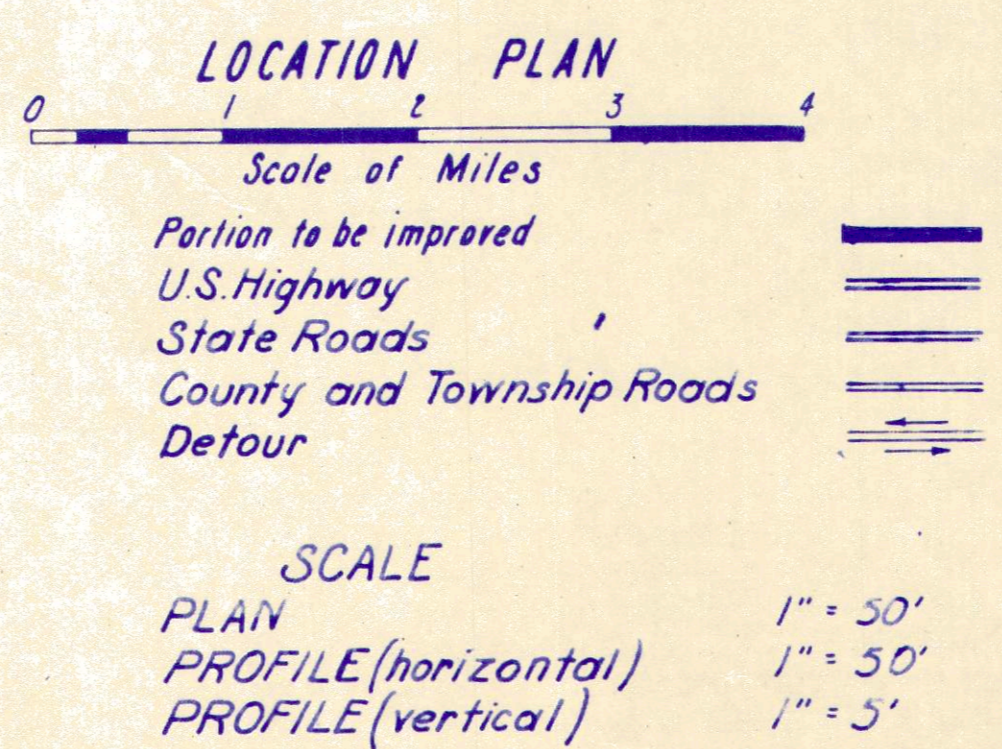
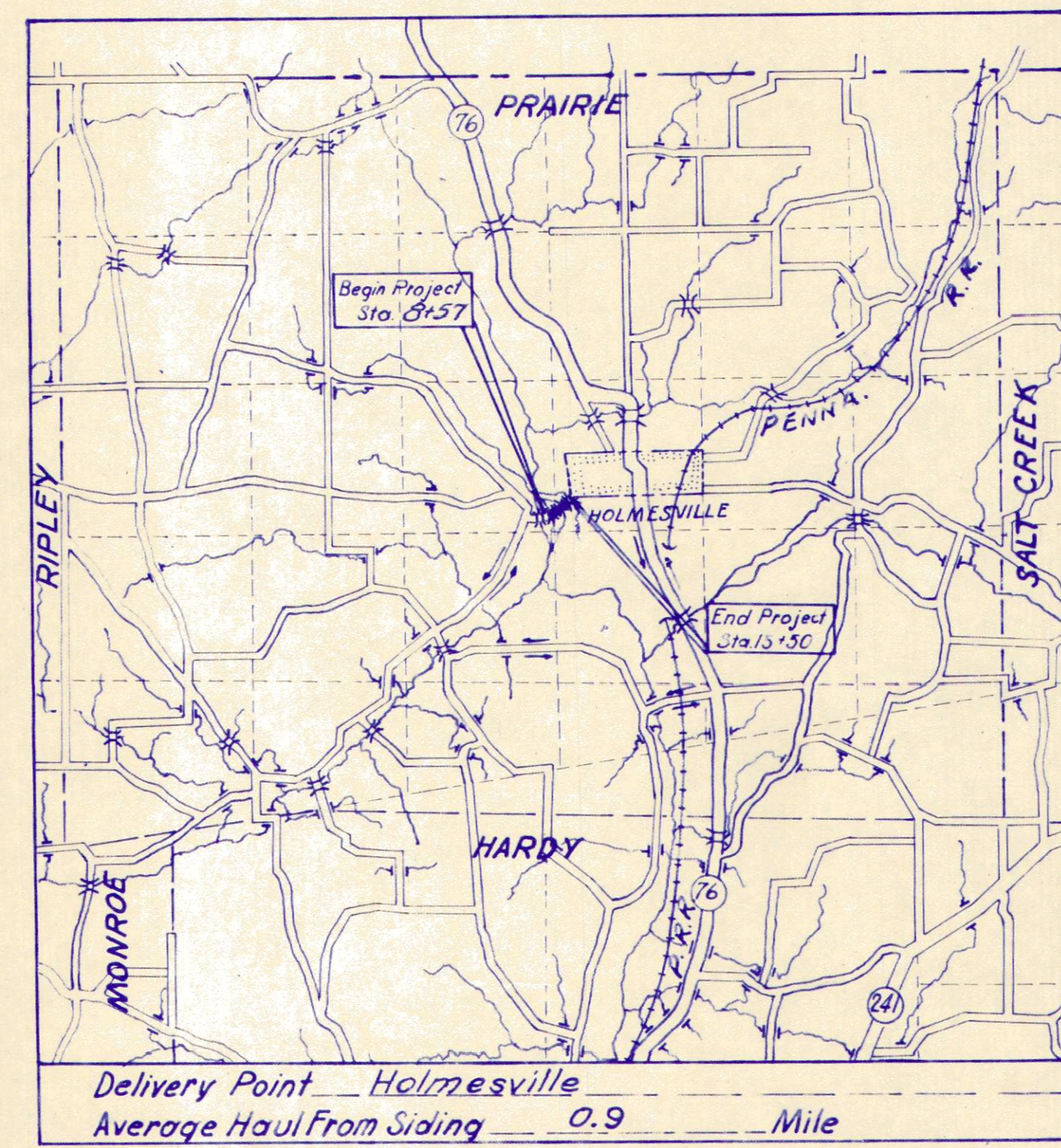
Begin Project	Sta. 8+57
End Project	Sta. 15+50
Gross Length of Project	693.0 Lin. Ft. or 0.131 Mile
Begin Work	Sta. 7+75
End Work	Sta. 16+00
Gross Length of Work	825.0 Lin. Ft. or 0.156 Mile

CONVENTIONAL SIGNS

Township Line	-----
Section Line	-----
Center Line	-----
Corporation Line	-----
Fence Line	-x-x-x-x-
Guard Rail	•••••
Railroad	+++++
Power Poles	⊕ ⊕ ⊕ ⊕ ⊕
Telephone Poles	⊗ ⊗ ⊗ ⊗ ⊗
Trees to be Removed	⊗ ⊗ ⊗ ⊗ ⊗
Right of Way	-----

INDEX OF SHEETS

Title Sheet	1
Typical Sections	2
Summary and General Notes	3
Plan and Profile	4-5
Cross Sections	6-7
Structure over 20' Span	8-10



Plans Prepared by
MICHAEL BAKER JR.
Consulting Engineers
Rochester, Pennsylvania

Supplemental Prints of Standard Construction Drawings						Supplemental Specifications	
G-707	6-1-56	L-3-A	4-1-50	T-35	1-2-56	E-101	1-1-57
I-15 No. 1	8-1-55	P-1-54	12-1-54	AS-1-54	12-1-54	B-119	Rev. 8-11-57
I-15 No. 2A	6-1-57	S-27 P.C. 4	1-4-54	CS-1-54 (2 sheets)	7-16-56	9	6-24-58
L-3	4-1-50	RI-1	7-15-58	A-1-54	12-1-54		
		L-1	4-1-50	S-27 P.C. 3	2-20-45		

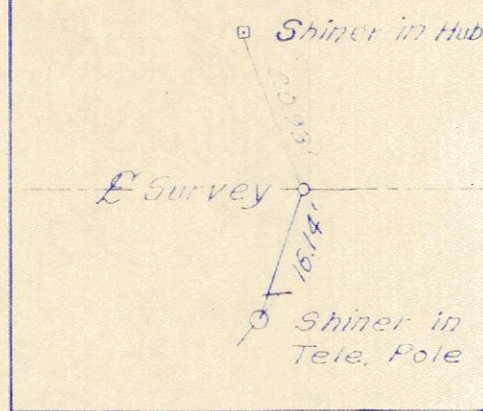
DEPARTMENT OF COMMERCE
BUREAU OF PUBLIC ROADS

Approved _____
Division Engineer Date

FILE NO.	Holmes County Road No 320	
	Date of Letting	195
	Contract No.	

UTILITY OWNERSHIP
Telephone Service Co. of Ohio
122 S. Elizabeth St.
Lima, Ohio

Ref. P.O.T. Sta. 5+00



See 3/P

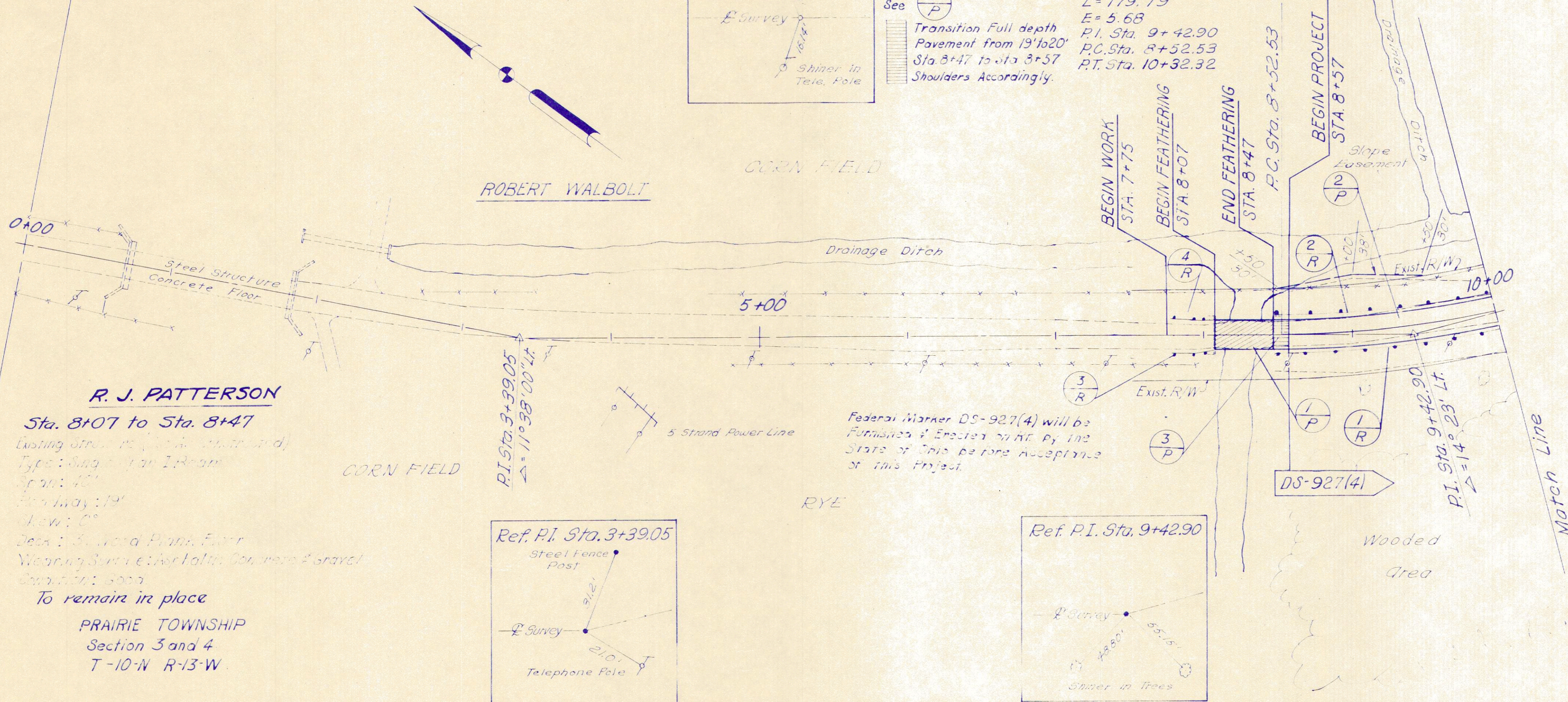
Transition Full depth
Pavement from 19' to 20'
Sta. 8+47 to Sta. 8+57
Shoulders Accordingly.

Curve Data
 $\Delta = 14^\circ 23' 00''$ Lt.
 $D = 8^\circ - 00'$
 $R = 716.20$
 $T = 90.37$
 $L = 179.79$
 $E = 5.68$
P.I. Sta. 9+42.90
P.C. Sta. 8+52.53
P.T. Sta. 10+32.32

HOLMES COUNTY
CO. ROAD NO. 320

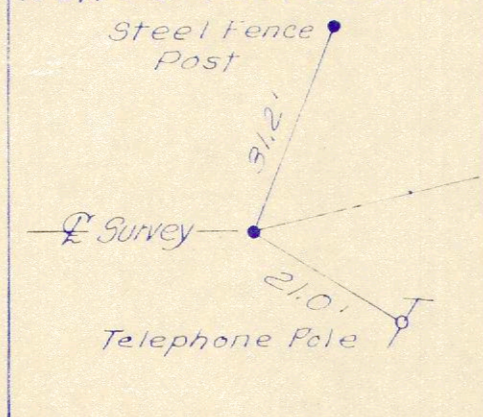
FED. RD. DIVISION	STATE	PROJECT
2	OHIO	DS-927(4)

4/10

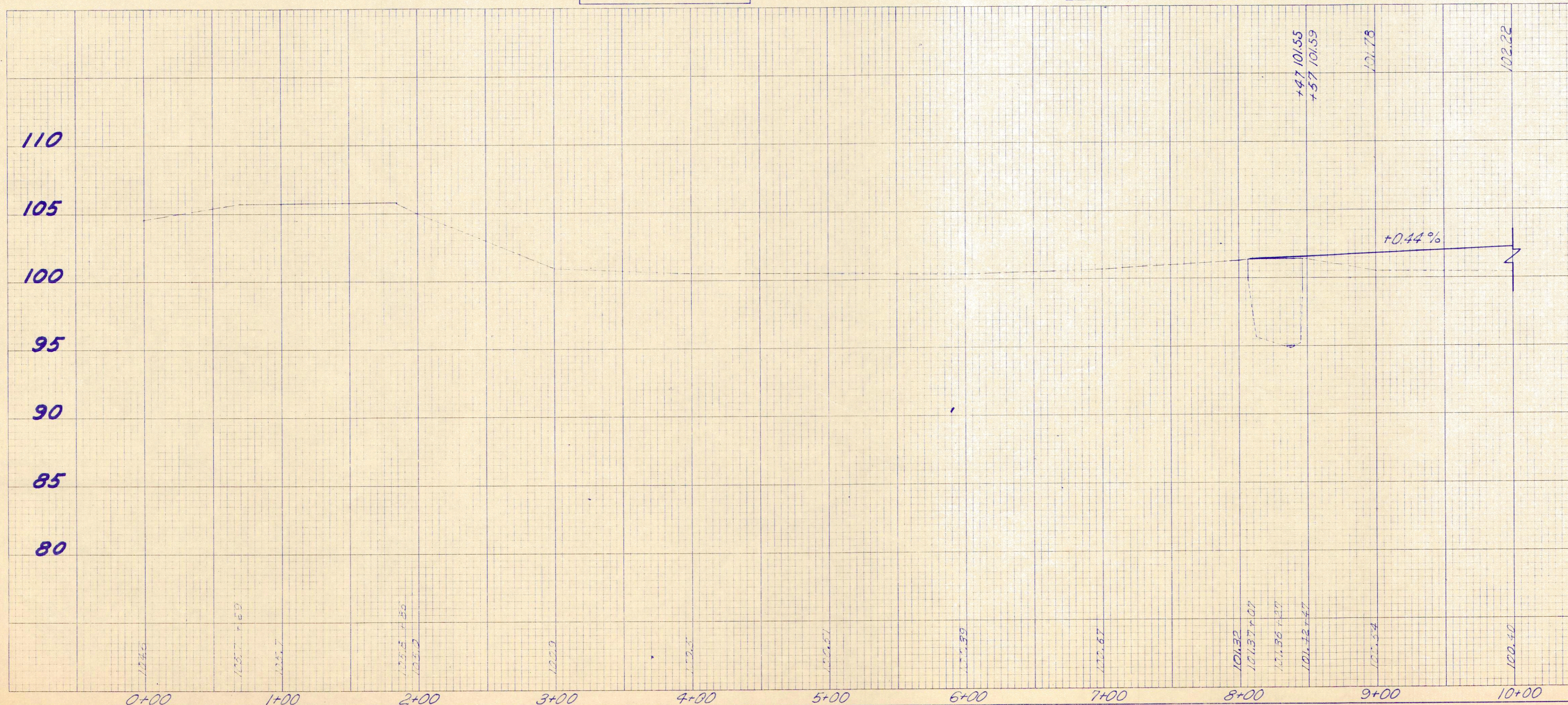
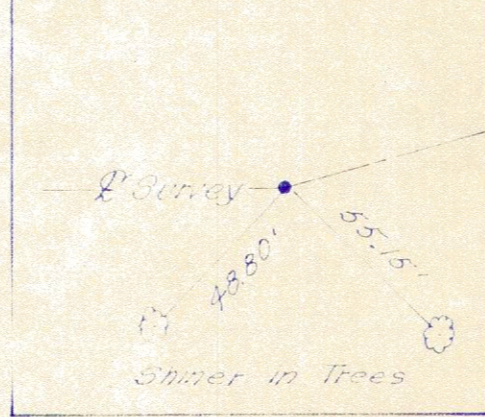


R. J. PATTERSON
Sta. 8+07 to Sta. 8+47
Existing structure (Steel structure concrete floor)
Type: 8" x 8" x 12" I-beam
Span: 40'
Slope: 1:1
Skew: 0°
Deck: 5" Wood Plank Form
Wearing Surface: 4" Hot Mix Concrete & gravel
Concrete: 5000
To remain in place
PRAIRIE TOWNSHIP
Section 3 and 4
T-10-N R-13-W

Ref. P.I. Sta. 3+39.05

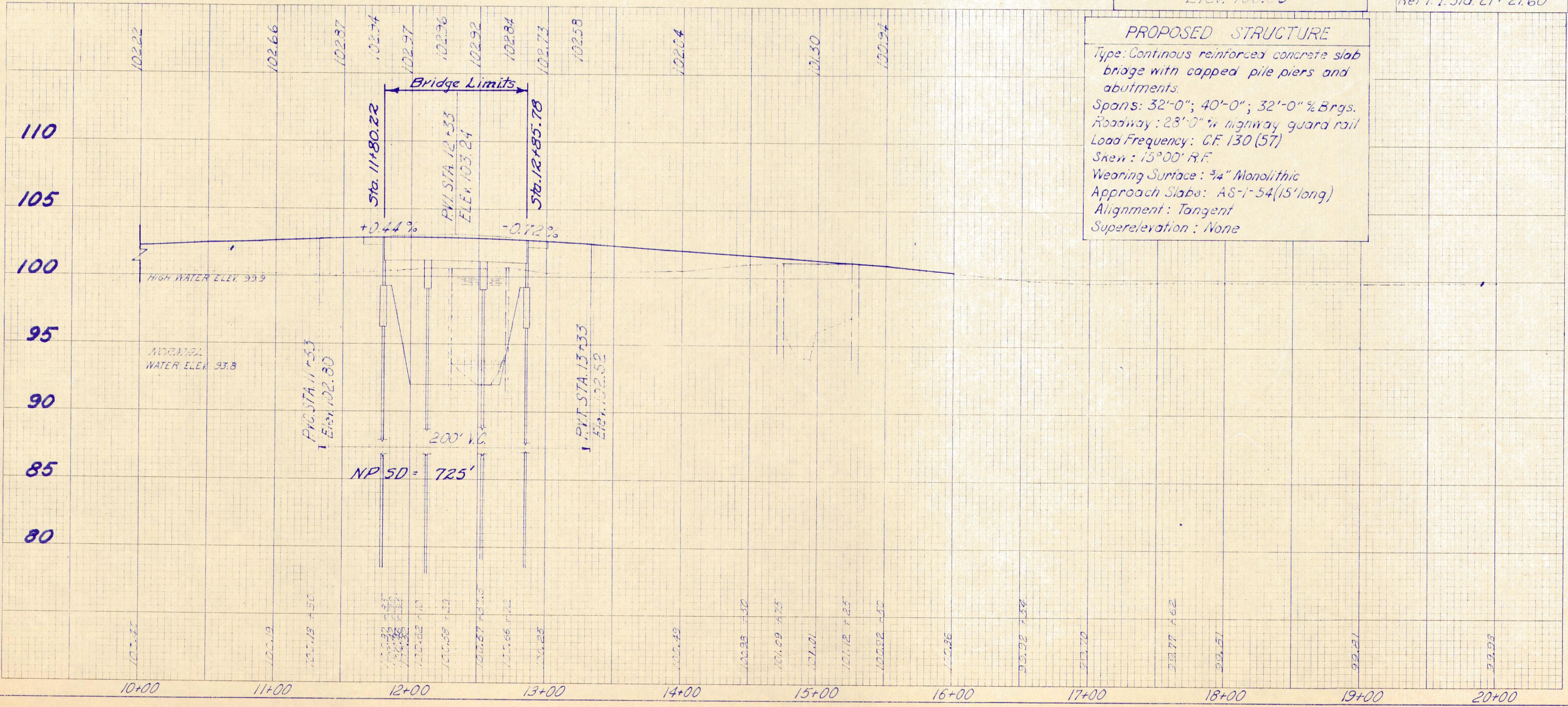
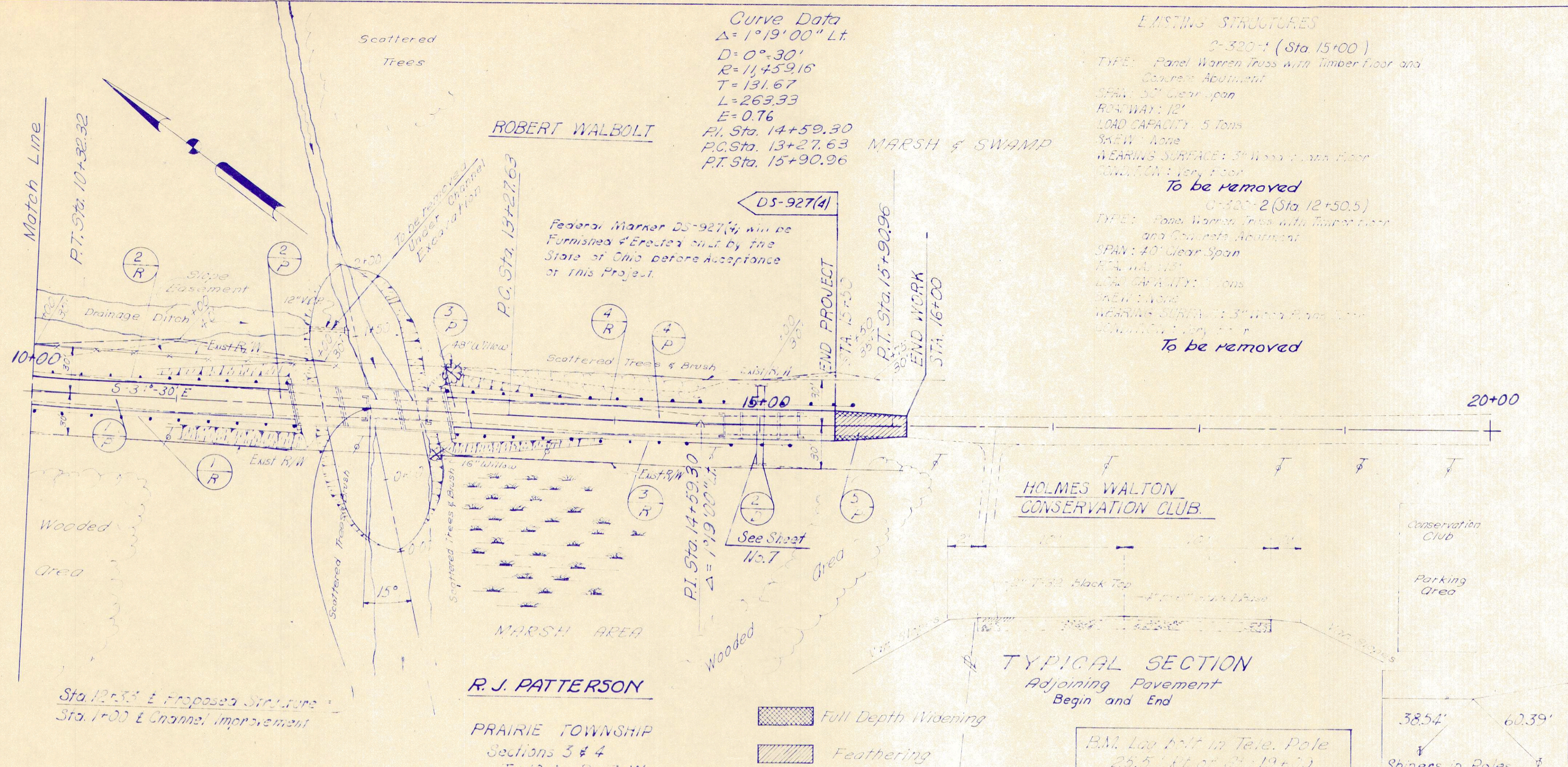


Ref. P.I. Sta. 9+42.90



ESTIMATED QUANTITIES

REF. NO.	STATION TO STATION	SIDE	T-35 Asphalt Course	B-35 Asphalt Course	B-119 Concrete	T-30 Bit Frame	I-15 Aggregate	I-15 Guard Rail	TOTALS
I-P	8+07 to 8+47	E	2.9	8.8	111	74.5			
2-P	8+57 to 10+00	E	0.9	0.6	8	5.0			
3-P	8+47 to 8+57	E							
I-R	8+52.76 to 10+00	Rt					150.12		
2-R	8+50.14 to 10+00	Lt					146.38		
3-R	7+80 to 8+05	Rt					25.0		
4-R	7+80 to 8+05	Lt					25.0		
SUBTOTAL									141.29
TOTALS									16.4
SUBTOTAL									9.4
TOTALS									9.4
SUBTOTAL									119
TOTALS									119
SUBTOTAL									79.5
TOTALS									79.5
SUBTOTAL									546.5
TOTALS									546.5



ESTIMATED QUANTITIES

REF. NO.	STATION TO STATION	SIDE	T-15 Asphalt Wearing Surface	T-30 Asphalt Base	T-30 Asphalt Subbase	E-2 Excavation	S-27 Structures	I-15 Guard Rail
1-P	10+00 to 11+80.22	RT	15.3	12.2	2.3	33.3	33.3	194.60
2-P	11+80.22 to 12+85.78	LT	2.1	1.4	1.4	33.3	33.3	175.84
3-P	12+85.78 to 15+00	RT	1.3	0.6	7	5	5	249.97
4-P	15+00 to 16+00	LT	1.3	0.6	7	5	5	278.47
2-V	15+00	E				16	16	
1-R	10+00 to 11+85.97	RT						
2-R	10+00 to 11+76.47	LT						
3-R	12+83.33 to 15+30.25	RT						
4-R	12+83.03 to 15+60.78	LT						
Subtotal								
TOTALS								