

STATE OF OHIO
DEPARTMENT OF HIGHWAYS
HOLMESVILLE - BENTON ROAD
COUNTY ROAD N° 189
HOLMESVILLE CEMETERY ROAD
COUNTY ROAD N° 245
HOLMES COUNTY
PRAIRIE AND SALT CREEK TOWNSHIPS
AND VILLAGE OF HOLMESVILLE

OHIO PROJECT
N° S-927 (2)
OHIO PROJECT
N° S-270 (1)

FED. RD. DIVISION	STATE	PROJECT	FISCAL YEAR	1
2	OHIO	S-927(2) S-270(1)	1946	12

HOLMES COUNTY
COUNTY ROAD N° 189-FASS 1204
COUNTY ROAD N° 245-FASS 1215

We, the Commissioners of Holmes County, in formal session hereby approve these plans and certify that the necessary right of way is available. We agree to maintain the project in a manner satisfactory to the Director of Highways, State of Ohio, or his duly authorized representatives and will make ample provision each year for such maintenance.
Done under authority of Sections 6906 et seq. and 7464 et seq. of the General Code of Ohio.

BOARD OF COMMISSIONERS - HOLMES COUNTY

Date 7-29-46
Frank Engel
Wm. Young

The Standard Specifications of the State of Ohio, Department of Highways, in force on date of contract, together with Supplemental Specifications listed hereon will govern this improvement.

I hereby approve these plans and declare that the making of this improvement will not require the closing to traffic of the highway and that provisions for the maintenance and safety of traffic will be as set forth on the plans and estimates.

APPROVED Karl Snyder
DATE 7-29-46 COUNTY ENGINEER

APPROVED Wm. Young
DATE 7-29-46 ASS'T. TO CHIEF ENGINEER

APPROVED _____
DATE _____ CHIEF ENGR. BUREAU BRIDGES & R.R. CROSSINGS

APPROVED _____
DATE _____ CHIEF ENGR. BUREAU LOCATION & DESIGN

APPROVED _____
DATE _____ 1ST ASS'T. DIRECTOR AND CHIEF ENGINEER

APPROVED _____
DATE _____ DIRECTOR OF HIGHWAYS

LINE DATA

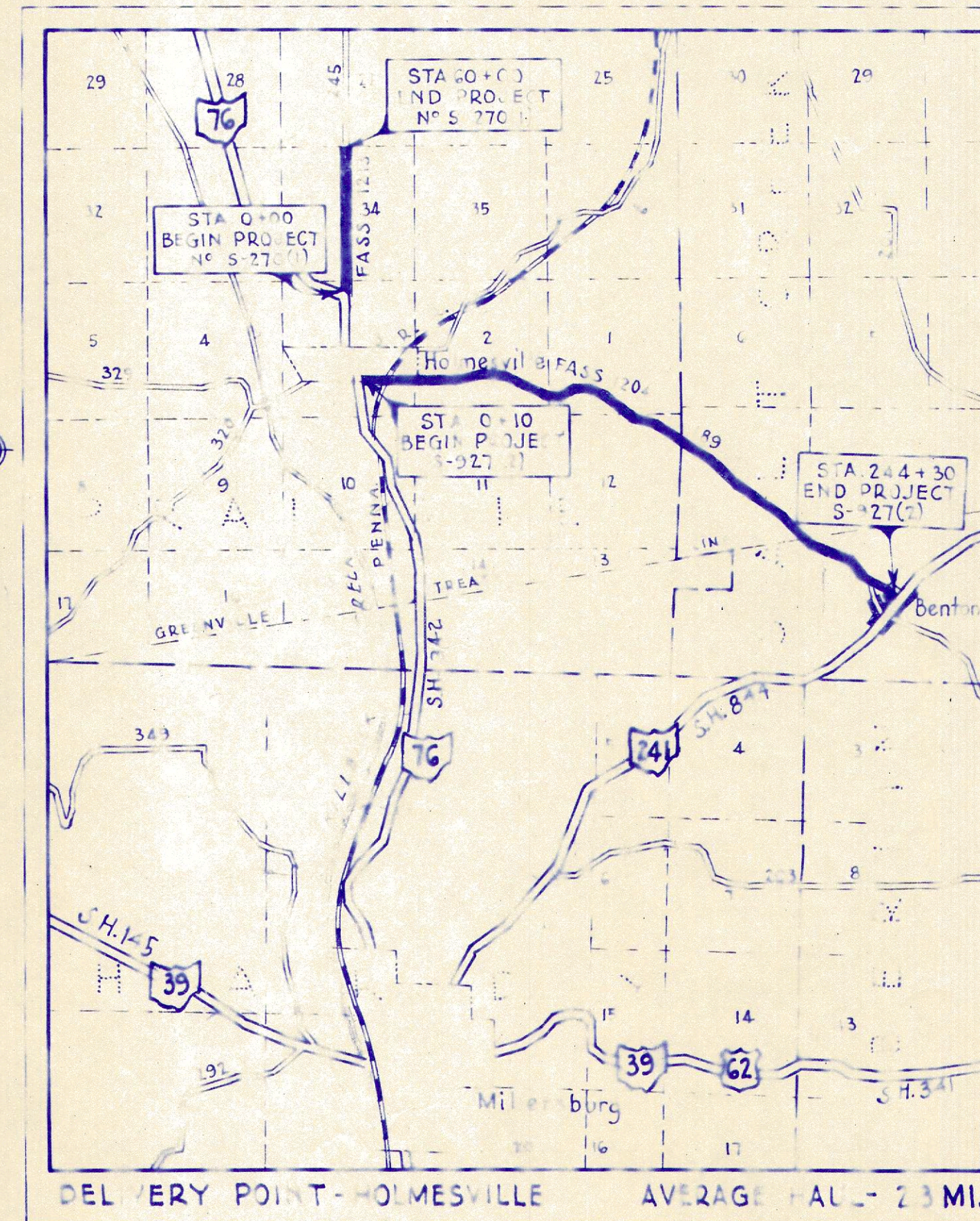
BEGIN PROJECT N° S-927(2)	STA. 0+10	
END PROJECT N° S-927(2)	STA. 244+30	
GROSS LENGTH		24420.0 LIN. FT.
DEDUCTIONS:		
RAILROAD - STA. 8+67 TO STA. 9+15	= 48.0	
BRIDGE - STA. 165+29.5 TO STA. 165+80.5	= 51.0	
FUT. RELOC. STA. 240+20 TO STA. 242+40	= 220.0	
TOTAL DEDUCTIONS		319.0 LIN. FT.
NET LENGTH OF PROJECT N° S-927(2)		24,101.0 LIN. FT. OR 4.564 MI.
BEGIN PROJECT N° S-270(1)	STA. 0+00	
END PROJECT N° S-270(1)	STA. 20+00	
GROSS LENGTH		6,000.0 LIN. FT.
NO ADDITIONS OR DEDUCTIONS		0.0 LIN. FT.
NET LENGTH OF PROJECT N° S-270(1)		6,000.0 LIN. FT. OR 1.136 MI.
NET LENGTH WORK = 24,101.00 + 6,000.00 =		30,101.00 LIN. FT. OR 5.700 MI.

CONVENTIONAL SIGNS

STATE LINE	_____
COUNTY LINE	_____
TOWNSHIP LINE	_____
SECTION LINE	_____
CENTER LINE	_____
STEAM RAILROAD	_____
GUARD RAIL	_____

INDEX OF SHEETS

TITLE PAGE	SHEET	1
TYPICAL SECTION & CONSTRUCTION NOTES	"	2
SUMMARY OF QUANTITIES	"	2
PLAN AND PROFILE	"	3-12



LOCATION PLAN

SCALE 1" = 1 MI.
PORTION TO BE IMPROVED
DETOURS SHOWN THUS
STATE HIGHWAYS
COUNTY HIGHWAYS

STANDARD DRAWINGS	
6-707	6-41

SUPPLEMENTAL SPECIFICATIONS	

FILE N° _____
HOLMES COUNTY CO. RDS. 189 & 245
DATE OF LETTING _____
CONTRACT N° _____

RECOMMENDED FOR APPROVAL DATE _____
DISTRICT ENGINEER
PUBLIC ROADS ADMINISTRATION
FEDERAL WORKS AGENCY
APPROVED _____
DIVISION ENGINEER
PUBLIC ROADS ADMINISTRATION
FEDERAL WORKS AGENCY

HOLMES COUNTY
COUNTY ROAD N° 189
COUNTY ROAD N° 245

PAVEMENT CALCULATIONS

Begin S-927 (2) Municipal Sta. 0+10
End S-927 (2) Municipal Sta. 23+27
Gross Length S-927 (2) Municipal 2317 Lin. Ft.
Deduction:
For Railroad Crossing (Sta. 8+67 to Sta. 9+15) - 48 Lin. Ft.
Net Length of S-927 (2) Municipal 2269 Lin. Ft.
Area S-927 (2) Municipal = (2269 x 18) ÷ 9 + 59 (Sh.#3) = 4597 Sq. Yds.

Begin S-927 (2) Rural Sta. 23+27
End S-927 (2) Rural Sta. 244+30
Gross Length S-927 (2) Rural = 22103 Lin. Ft.
Deductions:
For Bridge (Sta. 165+29.5 to Sta. 165+80.5) = 51 Lin. Ft.
For Relocat. (Sta. 242+20 to Sta. 242+40) 220 Lin. Ft.
Total Deductions - 271 Lin. Ft.
Net Length of S-927 (2) Rural 21832 Lin. Ft.
Area S-927 (2) Rural = (21832 x 18) ÷ 9 + 59 + 5 + 4 + 2 (See Line Sh.) = 43734 Sq. Yds.

Begin Project N° S-270 (1) Sta. 0+00
End Project N° S-270 (1) Sta. 60+00
No Additions or Deductions
Net Length of S-270 (1) 6000 Lin. Ft.
Area S-270 (1) = (6000 x 18) ÷ 9 + 250 (Sh.# 11) = 12250 Sq. Yds.

ITEM T-30 BITUMINOUS PRIME COAT
S-927 (2) Municipal 4597 x 0.35 = 1609 Gals.
S-927 (2) Rural 43734 - (43+50+28) x 0.35 = 15265 Gals.
S-270 (1) 12250 x 0.35 = 4288 Gals.

ITEM S-3 WATERPROOFING TYPE "C"
S-927 (2) Municipal None
S-927 (2) Rural 43+50+28 (See line sheets) = 121 Sq. Yds.
S-270 (1) None

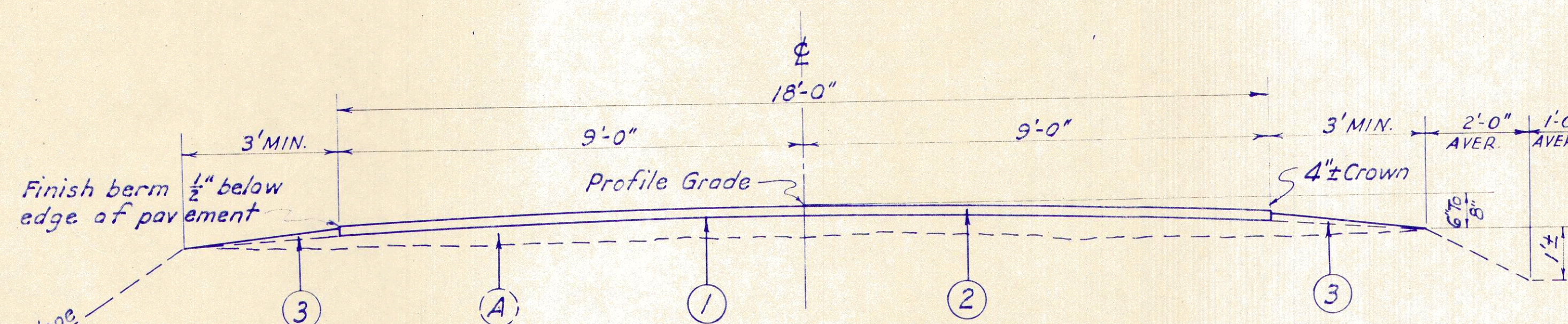
ITEM T-32 BITUMINOUS ROAD MIX SURFACE COURSE
N° 46 AGGREGATE
S-927 (2) Municipal 4597 x 0.056 = 258 Cu. Yds.
S-927 (2) Rural 43734 x 0.056 = 2449 Cu. Yds.
S-270 (1) 12250 x 0.056 = 688 Cu. Yds.
BITUMINOUS MAT'L.
S-927 (2) Municipal 4597 x 0.80 = 3678 Gals.
S-927 (2) Rural 43734 x 0.80 = 34987 Gals.
S-270 (1) 12250 x 0.80 = 9824 Gals.

ITEM T-32 SEAL COAT
N° 9 CHOKE AGGREGATE
S-927 (2) Municipal 4597 x 0.00375 = 17 Cu. Yds.
S-927 (2) Rural 43734 x 0.00375 = 164 Cu. Yds.
S-270 (1) 12250 x 0.00375 = 46 Cu. Yds.
N° 6 COVER AGGREGATE
S-927 (2) Municipal 4597 x 0.0075 = 35 Cu. Yds.
S-927 (2) Rural 43734 x 0.0075 = 328 Cu. Yds.
S-270 (1) 12250 x 0.0075 = 92 Cu. Yds.
BITUMINOUS MAT'L.
S-927 (2) Municipal 4597 x 0.25 = 1150 Gals.
S-927 (2) Rural 43734 x 0.25 = 10934 Gals.
S-270 (1) 12250 x 0.25 = 3070 Gals.

TYPICAL SECTION

TYPE T-32

SCALE 1/2" = 1'



- (A) Existing Traffic Bound Surface Course, Thickness = 8" Aver. on S-927(2); 6" on S-270(1)
- (1) T-30 Bituminous Prime Coat, Using 0.35 gal. M-5.7 RT-2 or 3 per sq. yd.
- (2) T-32 Bituminous Road Mix Surface, Method A or B using 0.056 cu. yd. N° 46 aggregate and 0.80 gal. Sec. M-5.7 RT-7.8 or 9 per sq. yd. Bituminous Seal Coat using 0.00375 cu. yd. N° 9 choke aggregate, 0.25 gal. Sec. M-5.7 RT-8 or 9 & 0.0075 cu. yd. N° 6 cover aggregate per sq. yd.
- (3) Berm Material to be furnished and placed by County (See note.)

PROJECT NO. S-927(2)

STA. 0+10 TO STA. 8+67 = 857.00 LIN. FT.
STA. 9+15 TO STA. 165+29.5 = 15614.50 LIN. FT.
STA. 165+80.5 TO STA. 240+20.0 = 7439.50 LIN. FT.
STA. 242+40.0 TO STA. 244+30.00 = 190.00 LIN. FT.
TOTAL = 24101.00 LIN. FT.

PROJECT NO. S-270(1)

STA. 0+00 TO STA. 60+00 = 6000.00 LIN. FT.

SUMMARY OF QUANTITIES

ITEM	QUANTITY			TOTAL	UNIT	DESCRIPTION
	S-927(2) MUNICIPAL	S-927(2) RURAL	S-270(1)			
T-30	1609	15265	4288	21172	GALS.	BITUMINOUS PRIME COAT SEC. M-5.7 RT-2 OR 3
T-32	258	2449	688	3395	CU. YDS.	N° 46 AGGREGATE FOR ROAD MIX
T-32	3678	34987	9824	48489	GALS.	ROAD MIX BITUMINOUS MATERIAL, SEC. M-5.7 RT-7.8 or 9
T-32	1150	10934	3070	15154	GALS.	SEAL COAT BITUMINOUS MATERIAL, SEC. M-5.7 RT-8 or 9
T-32	17	164	46	227	CU. YDS.	N° 9 AGGREGATE FOR CHOKE
T-32	35	328	92	455	CU. YDS.	N° 6 AGGREGATE FOR SEAL COAT
S-3	0	121	0	121	SQ. YDS.	WATERPROOFING TYPE "C"
SPECIAL	2	0	0	2	UNITS	ADVANCE R.R. WARNING SIGNS (FURNISH & ERECT)
					LUMP SUM	MAINTAINING TRAFFIC, INCLUDING LIGHTS, SIGNS, BARRICADES & WATCHMEN TWENTY FOUR (24) HRS. DAILY.

GENERAL NOTES

TRAFFIC: Traffic shall be maintained at all times. The length of one way traffic zones shall be kept to a minimum consistent with the requirements of safety. The item of "Maintaining Traffic" shall include furnishing lights, signs, barricades and watchmen necessary to secure the flow of two way traffic twenty four (24) hours daily.

SUPERELEVATED CURVES: Superelevated curves shall be built without crown. The crown shall be worked out of the pavement in that portion between the beginning of the transition and the point where the superelevation equals twice the crown.

BERMS: Berms shall be finished 1/2" below pavement edge, except on high side of superelevated curves.

PROFILE: The profile of the proposed surface course shall be approximately 1/2" inches above that of the existing pavement.

BITUMINOUS MATERIAL FOR ROAD MIX: The quantity of bituminous material estimated for the bituminous road mix has been calculated for use with gravel or stone aggregate. If the contractor elects to use slag aggregate, bituminous material for the road mix surface course shall be applied at the rate of 1.0 gal. per square yard, which will require a total quantity of approximately 60,966 gallons. Payment will be made on final measurement.

CHOKE: After the initial and before the final rolling of the road mix surface course, choke aggregate shall be evenly spread over the entire surface through an approved spreader. If uniform distribution has not been obtained, the aggregate shall be broomed to obtain same.

BERM MATERIAL: The berm material for this project shall be furnished and placed by Holmes County maintenance forces, to conform with the proposed typical section. The work shall be performed immediately after the Bituminous Road Mix Surface is placed and prior to the final inspection by the Public Roads Administration's representative.

ADVANCE RAILROAD WARNING SIGN: The Advance Railroad Warning Signs shall be similar to State of Ohio Code N° W-1-R

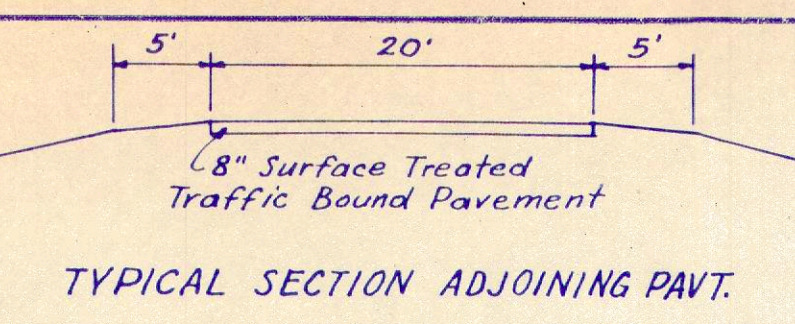
RAILROAD CROSSING: The new surface course shall be feathered to meet the rail grades if necessary.

CROWN AT RAILROAD CROSSING: The crown shall be worked out of the pavement beginning 50' each side of the railroad crossing by raising the edge of the pavement to meet the rail elevation.

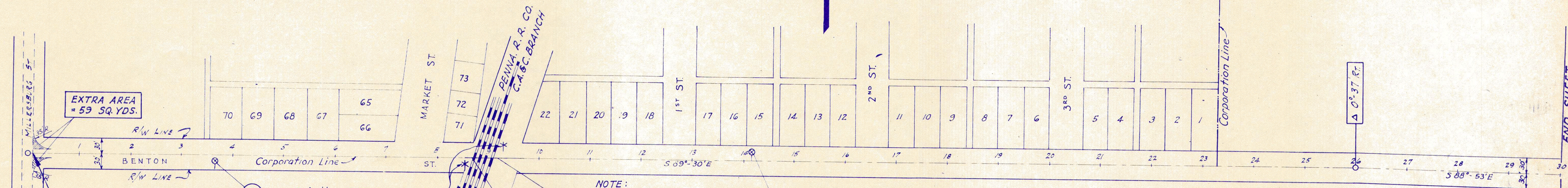
FED. RD. DIVISION	STATE	PROJECT	FISCAL YEAR
2	OHIO	S-927(2) S-270(1)	1946

3
12

HOLMES COUNTY
COUNTY ROAD No. 189
COUNTY ROAD No. 245



HOLMESVILLE VILLAGE



EXTRA AREA = 59 SQ. YDS.

Note: Marker to be furnished and erected on the right by State Forces before acceptance of this Project.

NOTE: PENNA. R.R. CO. WILL RAISE ITS MAIN TRACK 3" & RAISE SIDING TRACKS TO LEVEL OF MAIN TRACK. THEY WILL PROVIDE A 22' WIDTH PAVEMENT ACROSS TRACK AREA.

NO WORK DEDUCT 48"

STA. 0+10
BEGIN PROJECT
N° S-927(2)

MEASURED THICKNESS OF EXIST. GRAVEL PAVEMENT ON S-927(2)

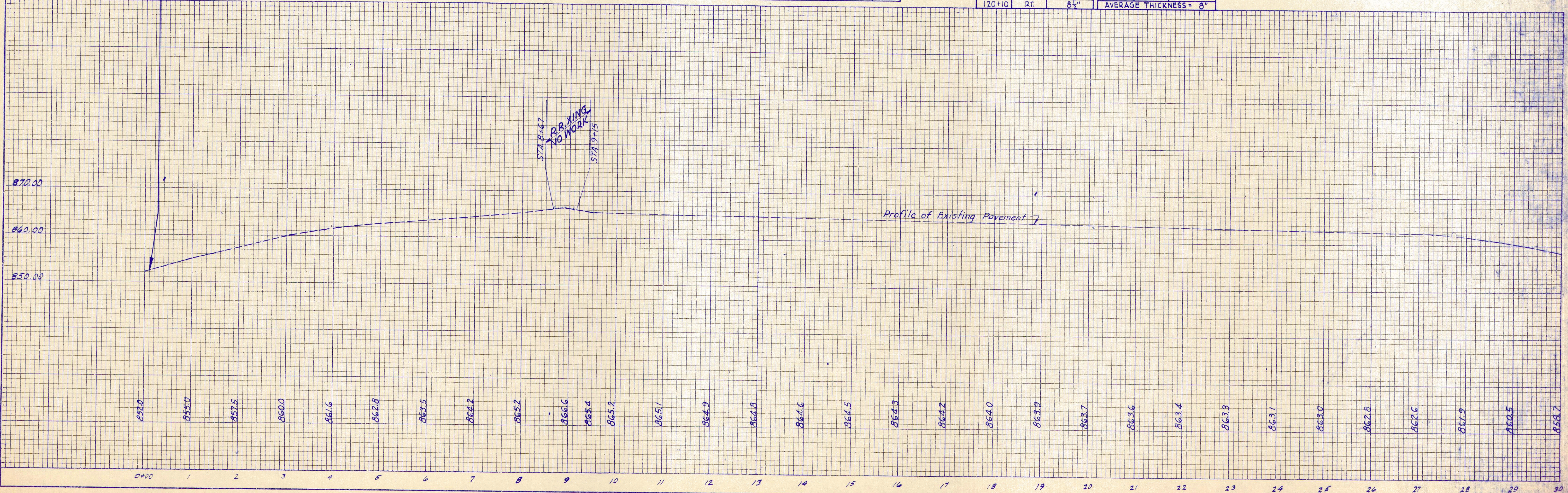
STA.	5' OFFSET	THICKNESS	STA.	5' OFFSET	THICKNESS
0+50	LT.	7"	130+15	RT.	7 1/2"
10+20	RT.	8"	139+90	LT.	7 1/2"
20+10	LT.	8 1/2"	150+10	RT.	9"
30+18	RT.	7 1/2"	160+15	LT.	8 1/2"
40+22	LT.	8"	170+30	RT.	8"
50+05	RT.	7 1/2"	180+20	LT.	7 1/2"
60+12	RT.	8 1/2"	190+25	RT.	8"
70+20	LT.	8"	200+08	LT.	8"
80+16	RT.	8"	210+17	RT.	8 1/2"
90+18	LT.	8 1/2"	220+09	LT.	7 1/2"
100+20	RT.	8 1/2"	230+19	RT.	8 1/2"
110+08	LT.	7 1/2"	240+10	LT.	8"
120+10	RT.	8 1/2"			
AVERAGE THICKNESS = 8"					

ADVANCE R.R. WARNING SIGNS

Ref.	N°	Station	Side	Distance from ϕ	N°	Req.
1-WS		3+65	RT.	15'		1
2-WS		14+15	LT.	15'		1
TOTAL						2

PLAN
NO. 12
DATE

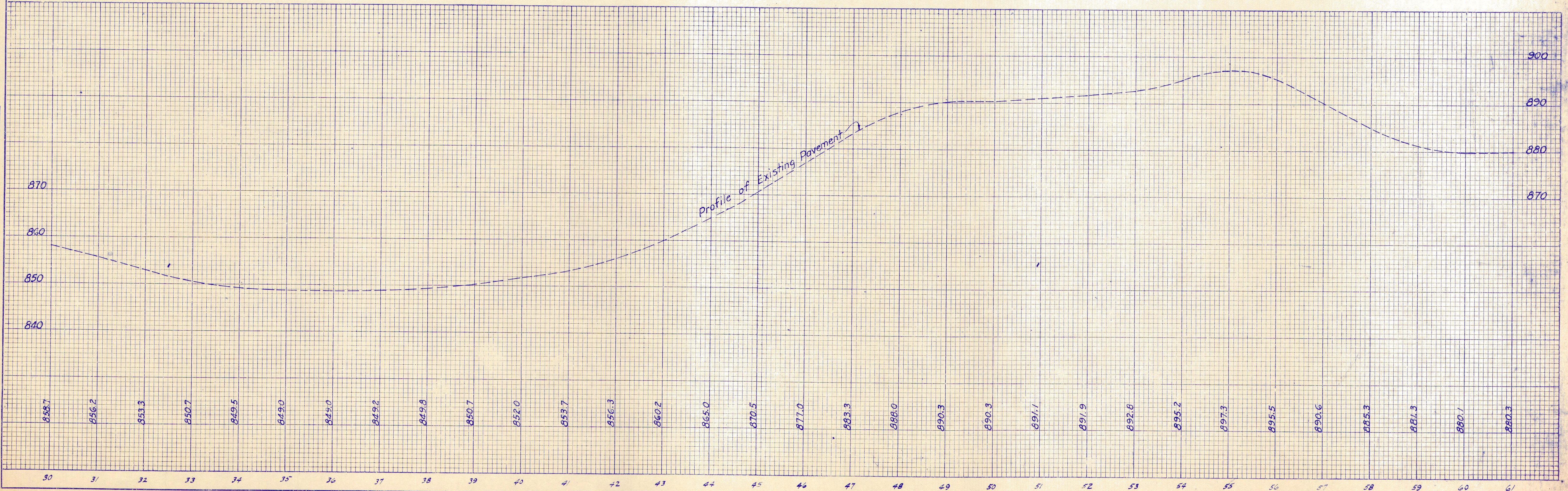
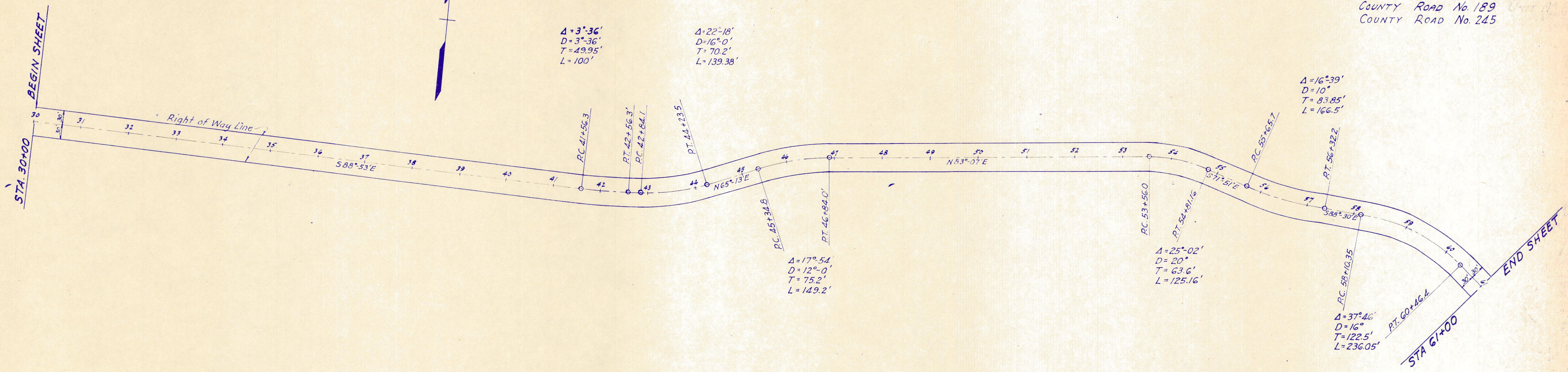
PROFILE
NO. 12
DATE



FED. RD. DIVISION	STATE	PROJECT	FISCAL YEAR
2	OHIO	S-927 (2) S-270 (1)	1946

4
12

HOLMES COUNTY
COUNTY ROAD No. 189
COUNTY ROAD No. 245



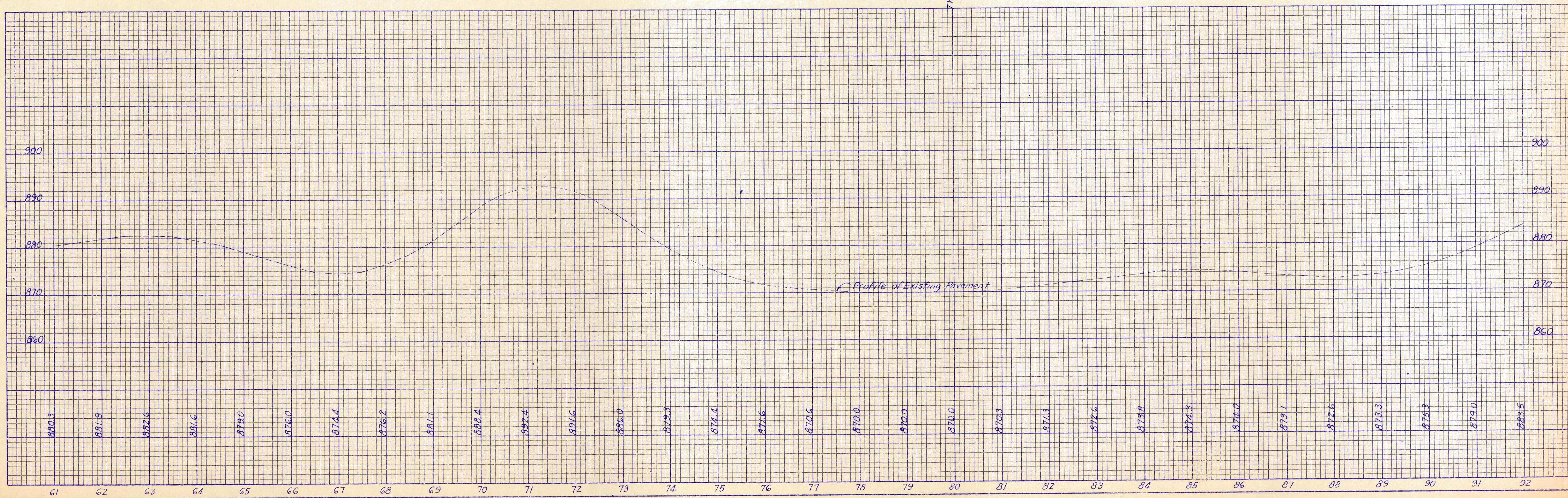
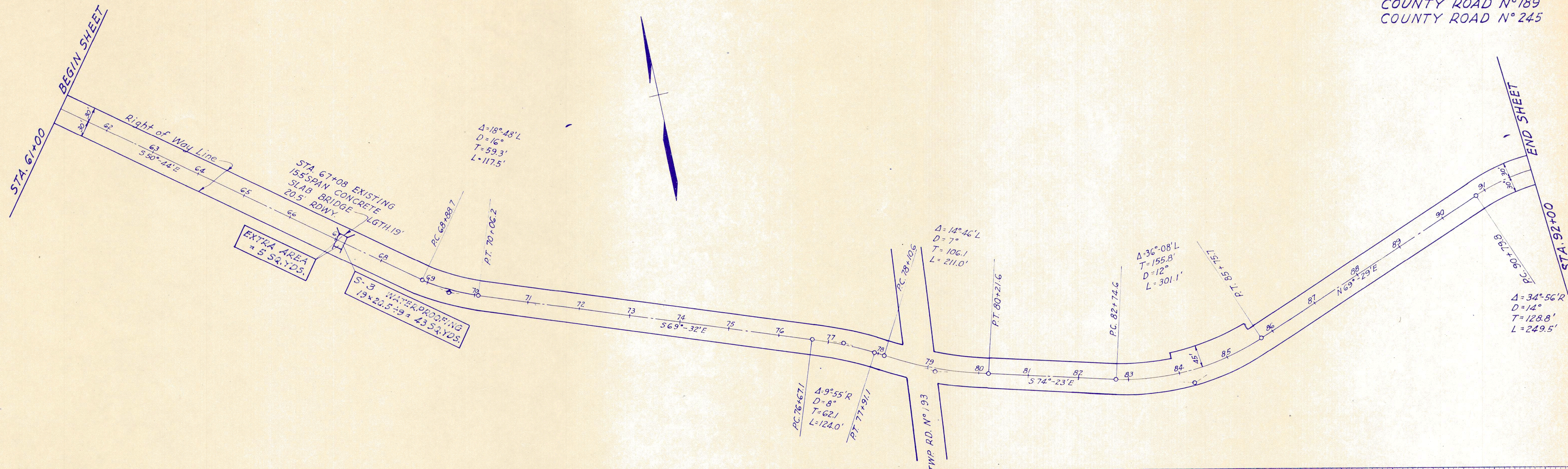
PLAN
SURVEYED
PLOTTED
ALIGNED CHECKED
NOTE BOOK
NO.

PROFILE
SURVEYED
GRADES CHECKED
NOTE BOOK
NO.

FED. RD. DIVISION	STATE	PROJECT	FISCAL YEAR
2	OHIO	S-927(2) S-270(1)	1946

5
12

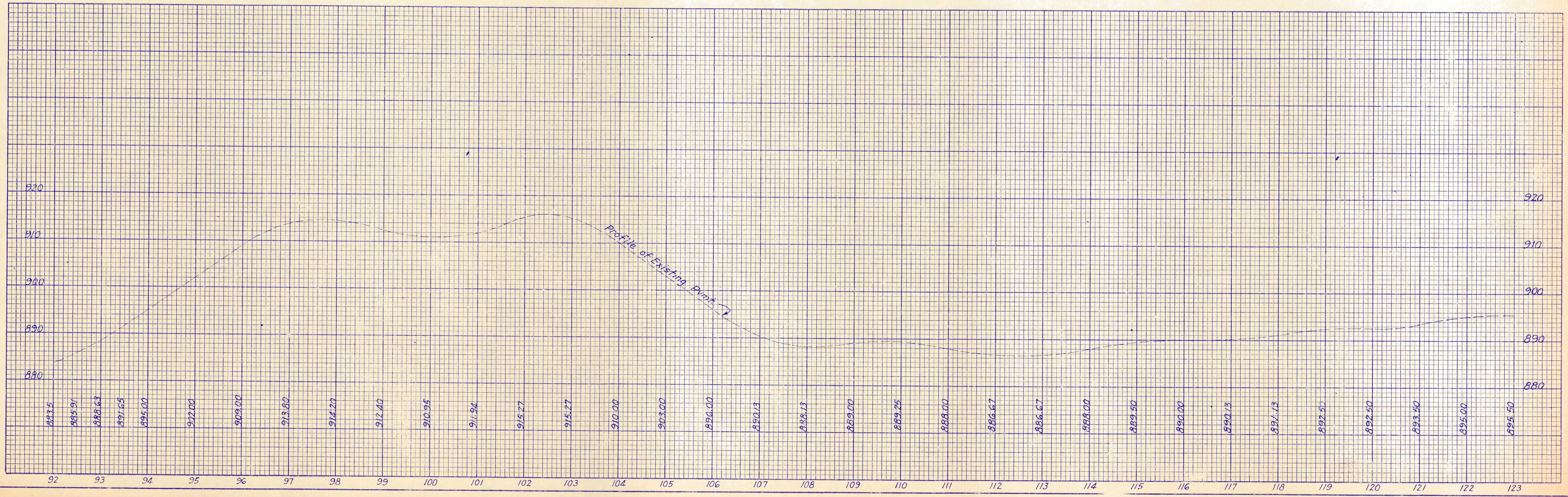
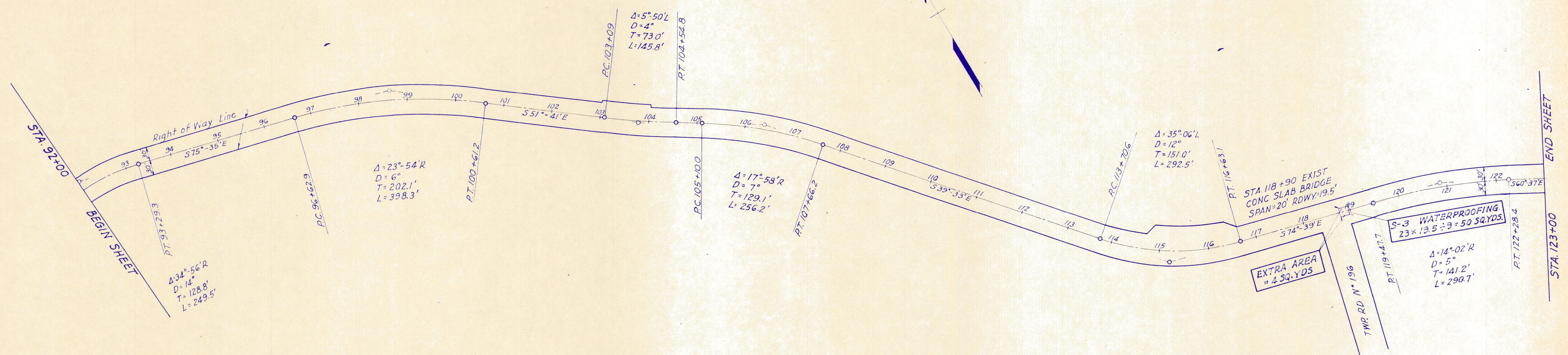
HOLMES COUNTY
COUNTY ROAD N°189
COUNTY ROAD N°245



FED. RD. DIVISION	STATE	PROJECT	FISCAL YEAR
2	OHIO	S-927 (2) S-270 (1)	1946

6
12

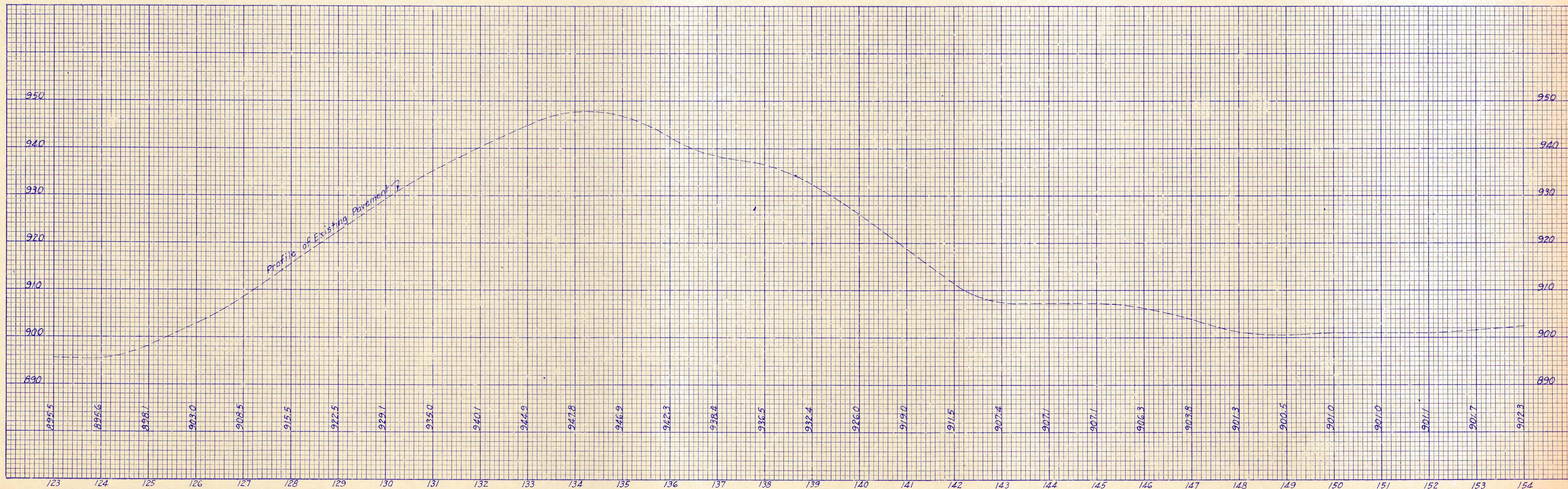
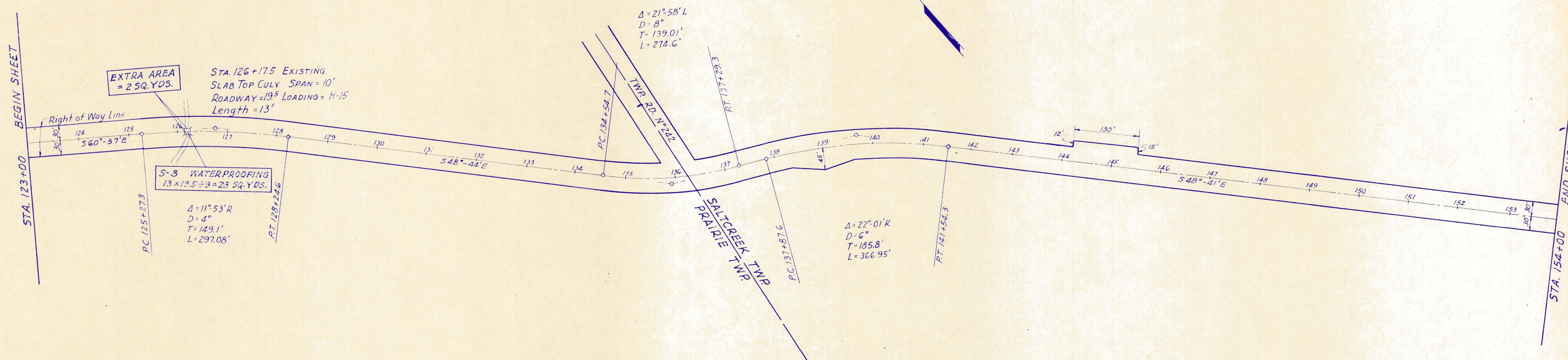
HOLMES COUNTY
COUNTY ROAD N°189
COUNTY ROAD N°245



FED. RD. DIVISION	STATE	PROJECT	FISCAL YEAR
2	OHIO	S-927 (2) S-270 (1)	1946

7
12

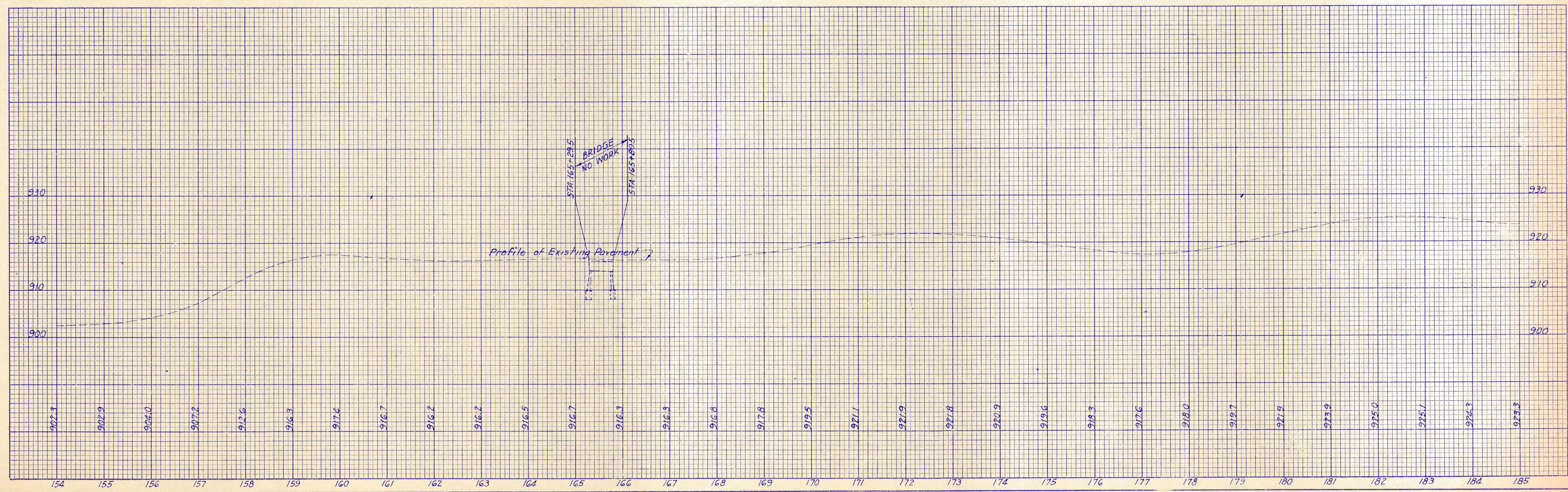
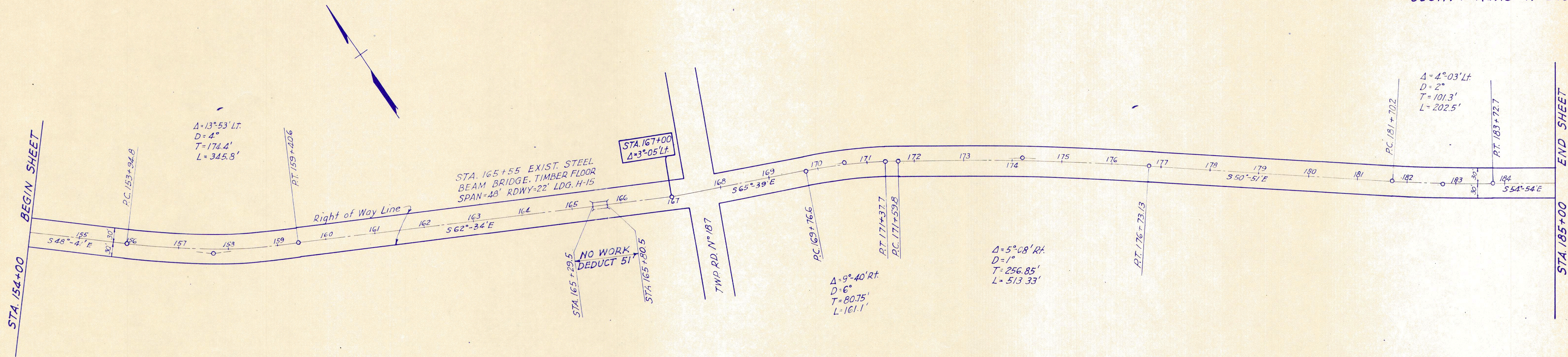
HOLMES COUNTY
COUNTY ROAD N° 189
COUNTY ROAD N° 245



FED. RD. DIVISION	STATE	PROJECT	FISCAL YEAR
2	OHIO	S-927 (2) S-270 (1)	1946

8
12

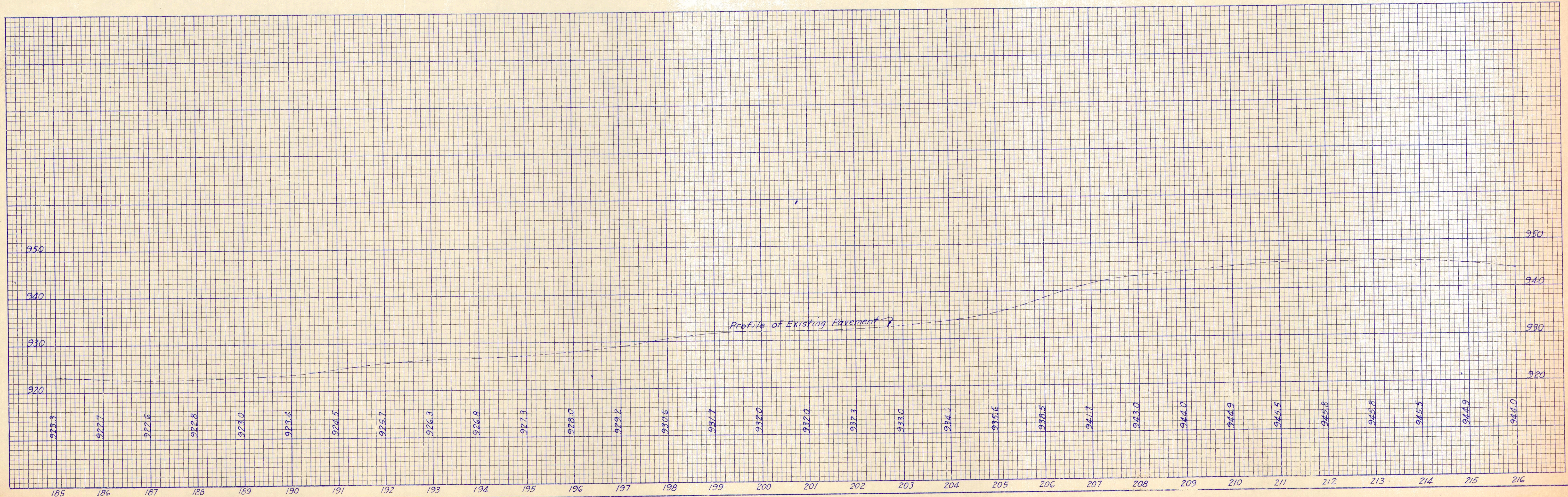
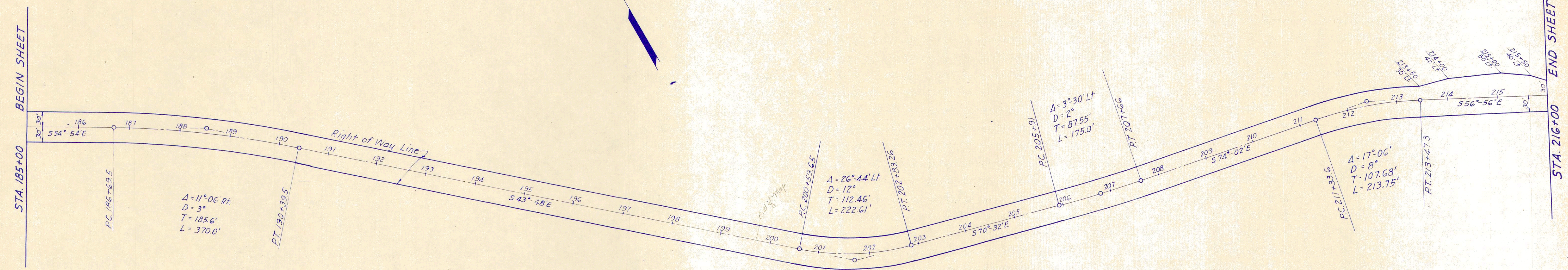
HOLMES COUNTY
COUNTY ROAD N° 189
COUNTY ROAD N° 245



FED. RD. DIVISION	STATE	PROJECT	FISCAL YEAR
2	OHIO	S-927 (2) S-270 (1)	1946

9
12

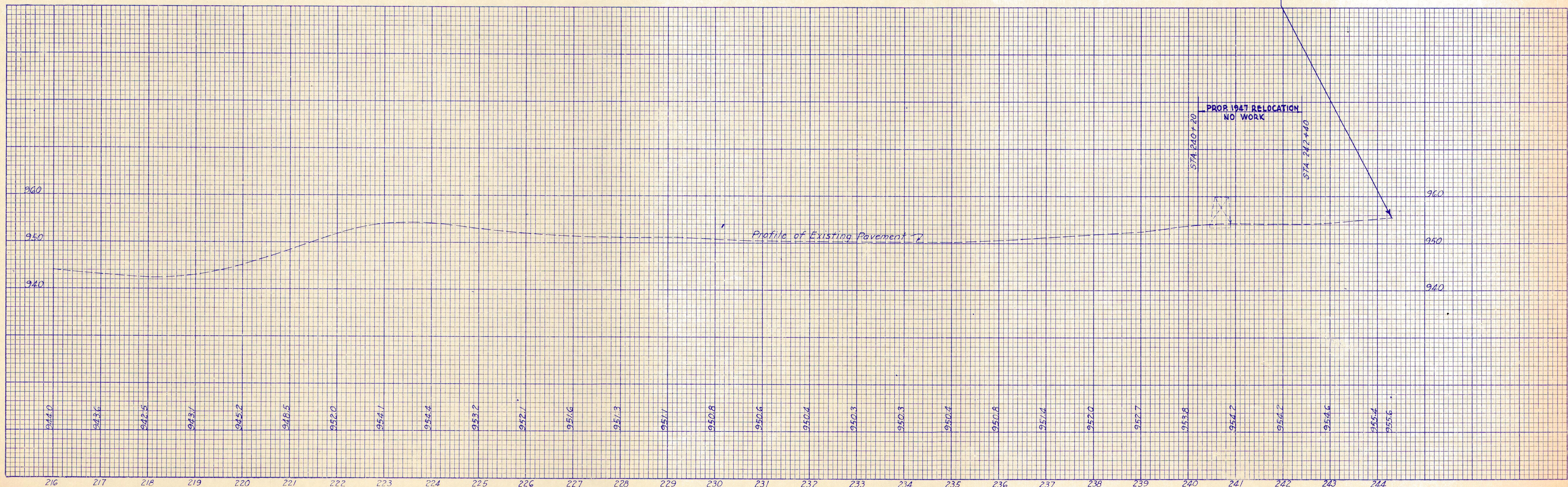
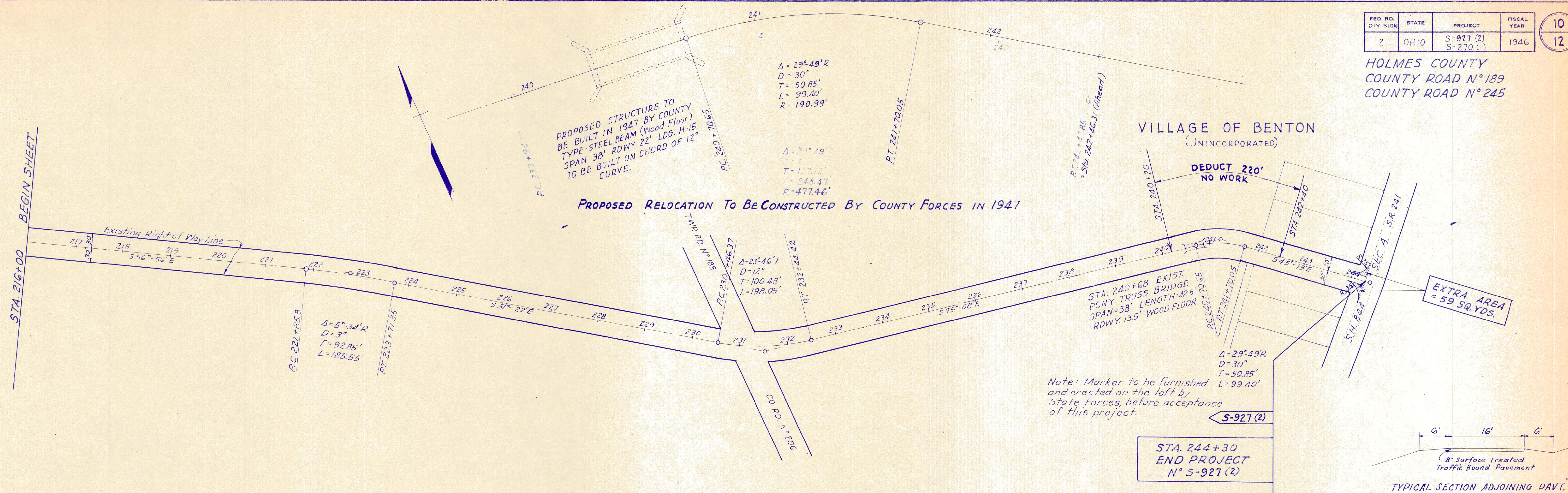
HOLMES COUNTY
COUNTY ROAD N° 189
COUNTY ROAD N° 245



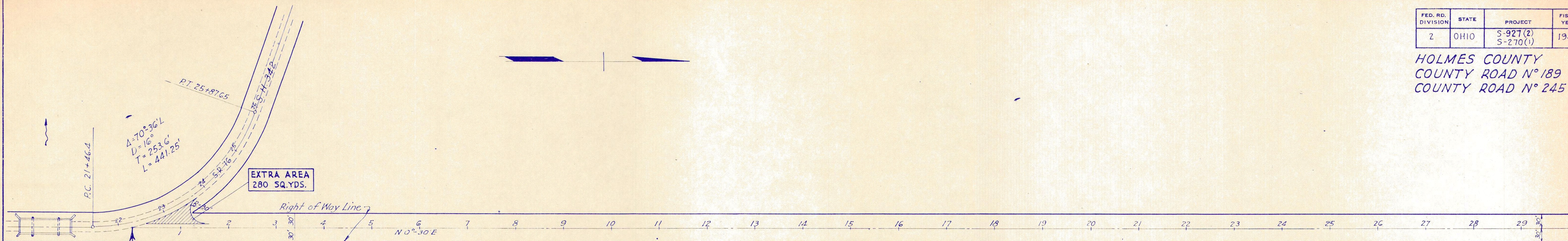
FED. RD. DIVISION	STATE	PROJECT	FISCAL YEAR
2	OHIO	S-927 (2) S-270 (1)	1946

10
12

HOLMES COUNTY
COUNTY ROAD N° 189
COUNTY ROAD N° 245

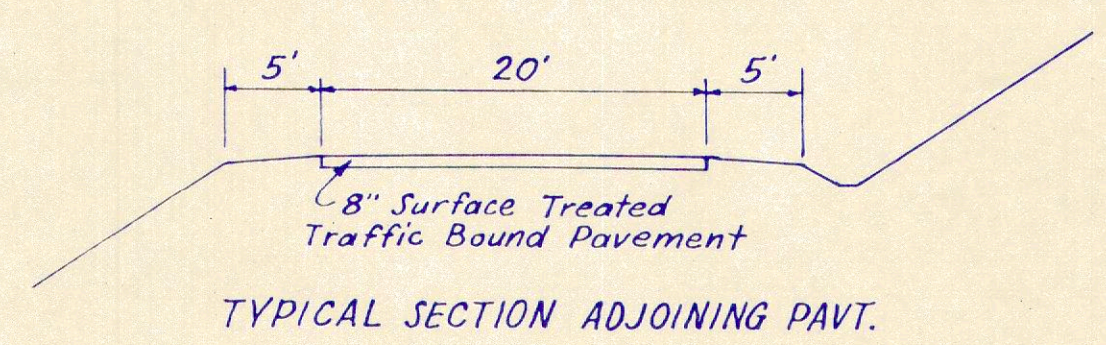


HOLMES COUNTY
 COUNTY ROAD N° 189
 COUNTY ROAD N° 245



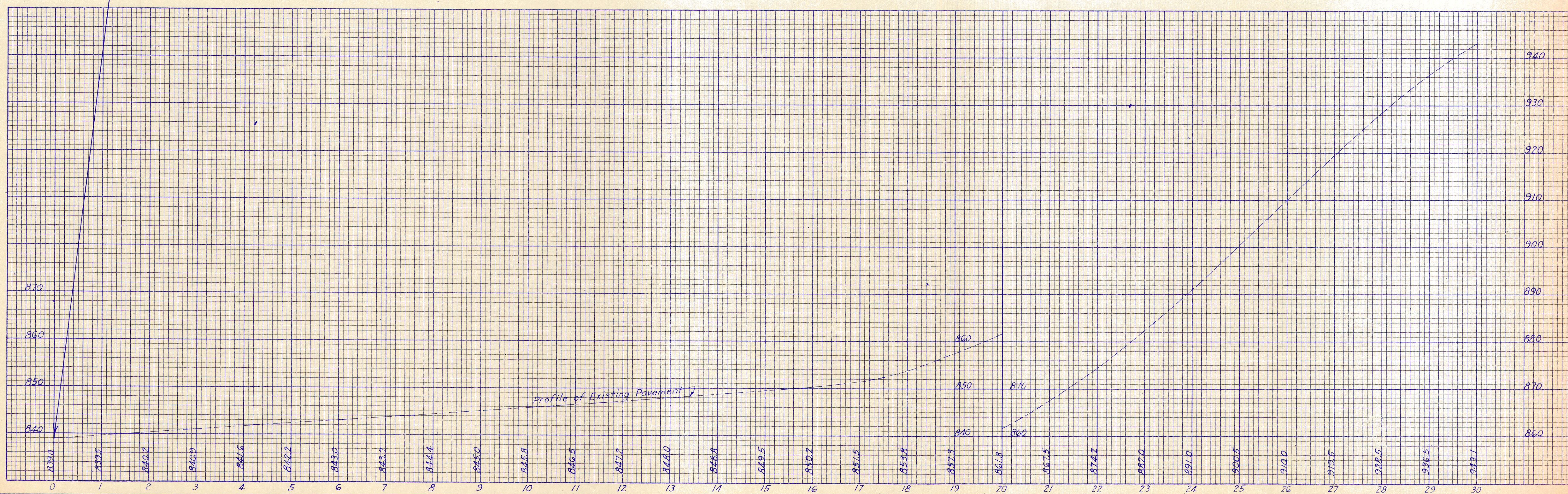
Note: Marker to be furnished and erected on the right by State Forces before acceptance of this project.

STA. 0+00
 BEGIN PROJECT
 N° S-270(1)



MEASURED THICKNESS OF EXIST. GRAVEL PAVEMENT ON S-270(1)

STA.	5' OFFSET	THICKNESS			
1+00	LT.	7"			
10+50	RT.	8"			
20+00	LT.	6 1/2"			
30+00	RT.	6 1/2"			
40+00	LT.	6 1/2"			
50+00	RT.	6 1/2"			
60+00	LT.	6"			
		AVERAGE THICKNESS = 6 3/4"			



END SHEET
 STA. 30+00

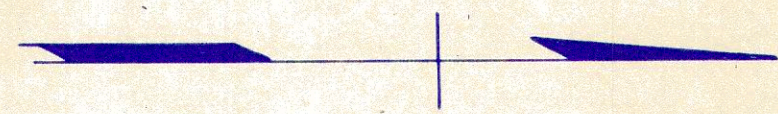
FED. RD. DIVISION	STATE	PROJECT	FISCAL YEAR
2	OHIO	S-927(2) S-270(1)	1946

(12)
12

HOLMES COUNTY
COUNTY ROAD N° 189
COUNTY ROAD N° 245

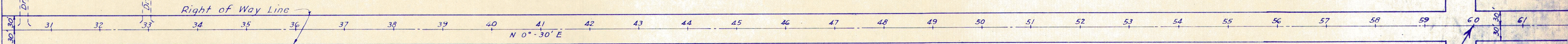
PLAN	BY	DATE
SURVEYED		
PLOTTED		
CHECKED		
INSTRUMENTS CHECKED		
REVISIONS		
NO. _____		

PROFILE	BY	DATE
SURVEYED		
PLOTTED		
CHECKED		
INSTRUMENTS CHECKED		
REVISIONS		
NO. _____		



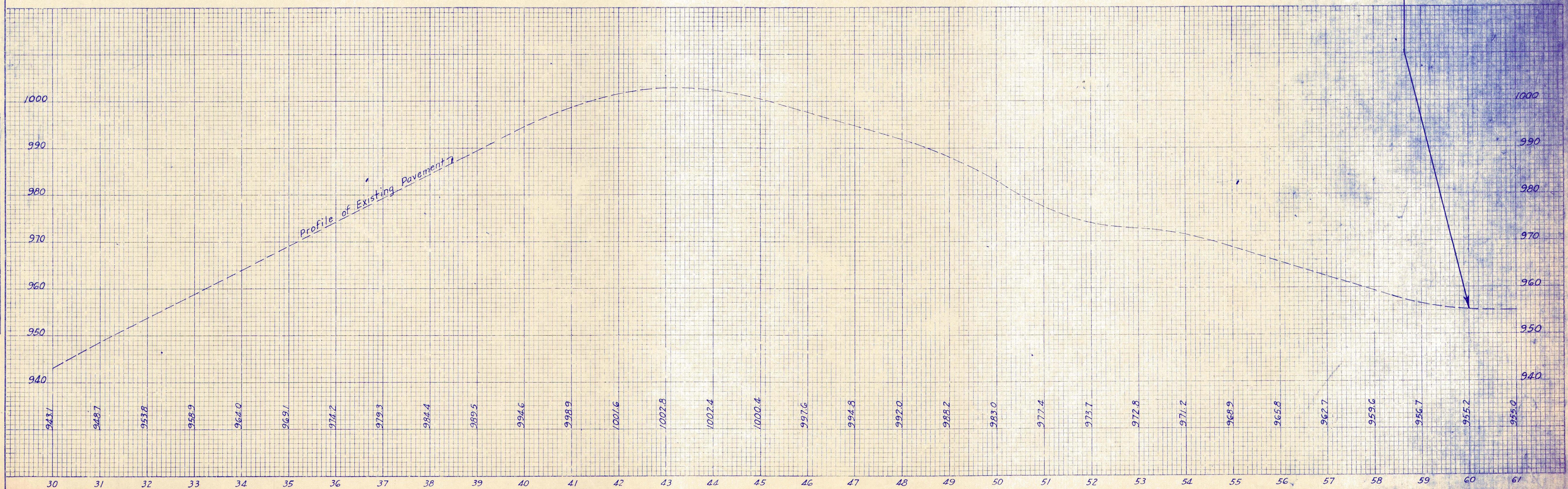
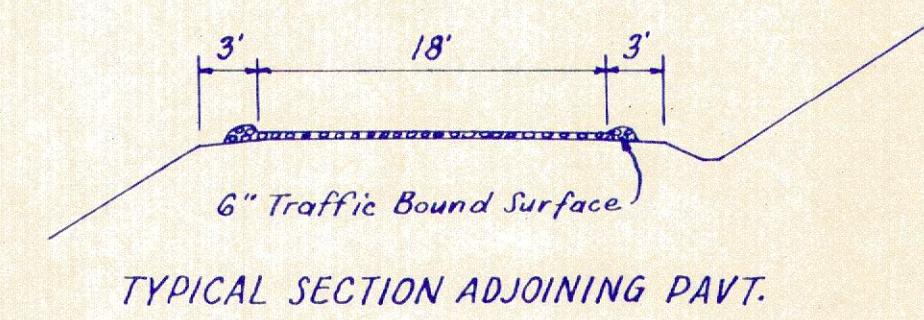
STA. 30+00 END SHEET

HOLMESVILLE CEMETERY



Note: Marker to be furnished and erected on the left by State Forces, before acceptance of this project.

STA. 60+00
END PROJECT
N° S-270(1)



HOLMES COUNTY
COR 189 & 245
EA 22 (97)