

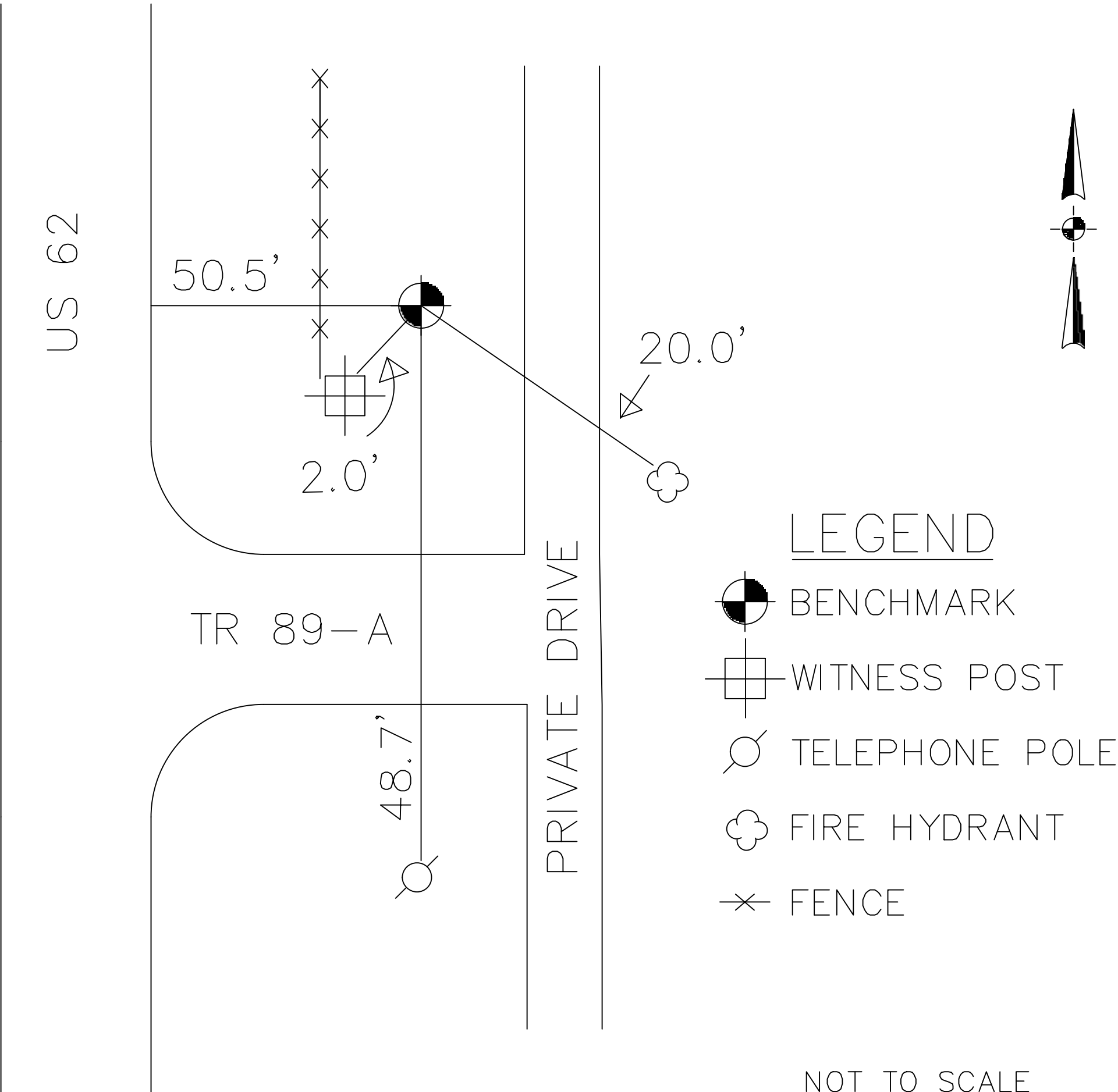
HOLMES COUNTY ENGINEER'S OFFICE

GEODETIC SURVEY MARKER

STATION NAME	HK 106	ALIAS	HM42		
USGS QUAD	KILLBUCK	TOWNSHIP	KILLBUCK		
TYPE OF MARK	Brass Disk in Concrete	SET BY	HOLMES CO. ENG.		
STAMPING ON MARK	HK 106	DATE SET	SEPT. 2003		
STATION LOCATION: ALONG THE NORTH SIDE OF TOWNSHIP ROAD 89-A, 60 FEET EAST FROM THE JUNCTION OF US ROUTE 62 AND TOWNSHIP ROAD 89-A.					
HORZ DATUM	NAD83-86	HORZ ORDER	1ST	METHOD	GPS
LATITUDE	40-30-06.869819	LONGITUDE	81-58-20.179814		
NORTH (y) meters	92886.141	EAST (x) meters	644732.211		
NORTH (y) US feet	304743.947	EAST (x) US feet	2115258.930		
CONVERGENCE	0-20-48.09	COMBINED FACTOR	0.99995035		
STATE PLANE COORDINATE SYSTEM ZONE: OHIO NORTH					
VERT DATUM	NAVD88	VERT ORDER	2ND		
ELEVATION (z) meters	270.528	ELEVATION (z) US feet	887.560		

STATION REFERENCES

HK 106



NOT TO SCALE

