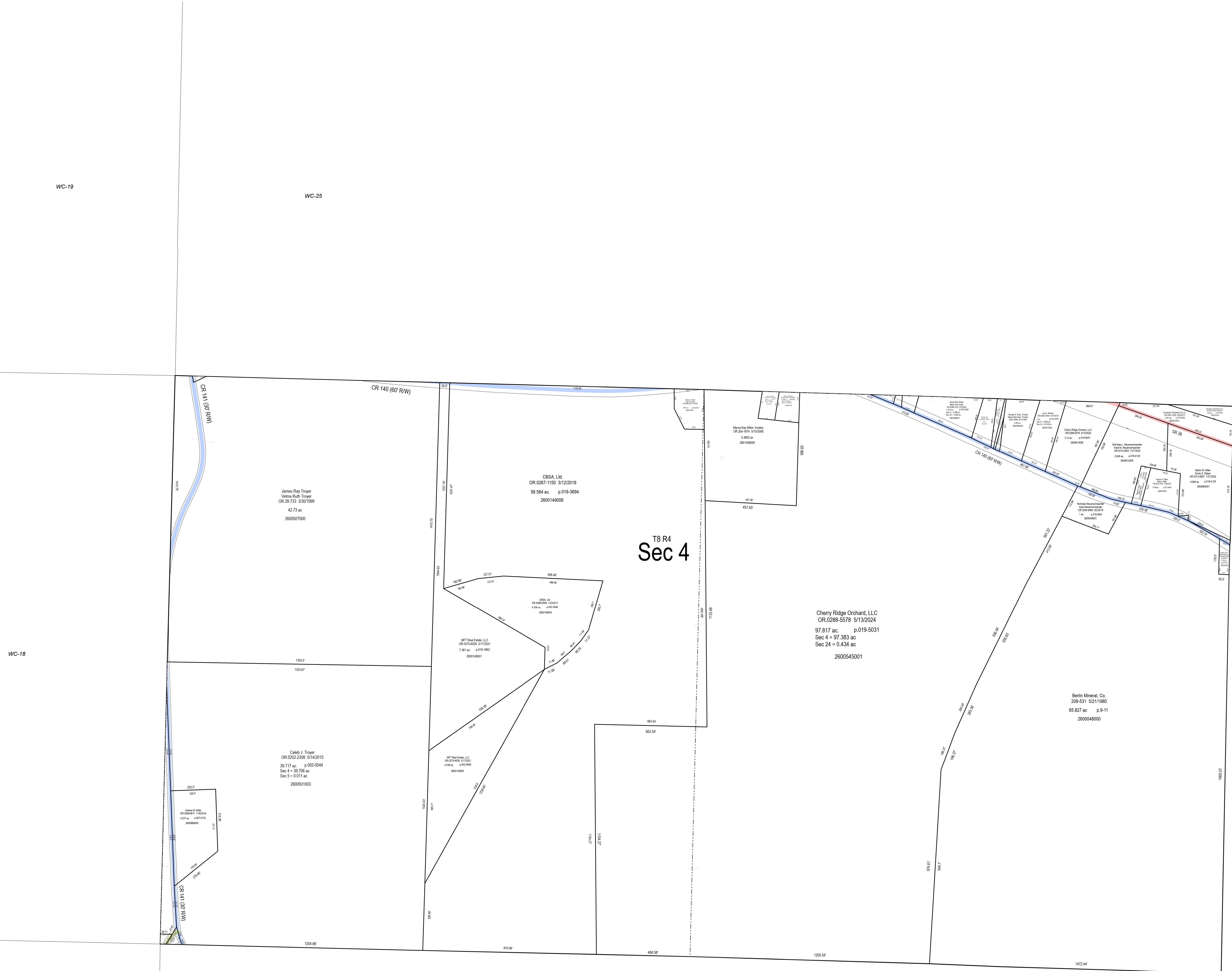


WC-19

WC-25

WC-18



T8 R4  
Sec 4

James Ray Toyer  
Wilma Ruth Toyer  
CR 028-733 5/10/1992  
42.73 ac  
2600927000

CBSA, LLC  
CR 0287-1150 3/12/2019  
58.584 ac. p. 019-3694  
2600149006

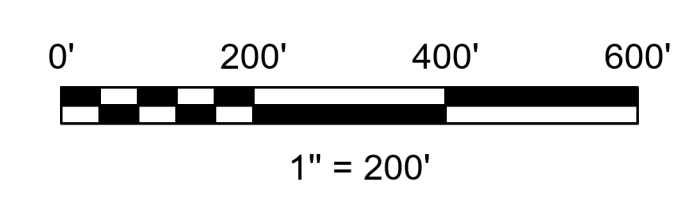
Cherry Ridge Orchard, LLC  
CR 0288-5578 5/13/2024  
97.617 ac. p. 019-5031  
Sec 4 = 97.383 ac  
Sec 24 = 0.434 ac  
2600545001

Berlin Mineral Co.  
CR 031-931 9/21/1960  
65.827 ac p. 9-11  
2600048000

Calvin J. Toyer  
CR 032-238 5/14/2015  
30.777 ac. p. 02-0644  
Sec 4 = 39.705 ac  
Sec 5 = 0.011 ac  
2600931003

8877 Real Estate, LLC  
CR 0278-629 3/13/2021  
7.361 ac. p. 019-1893  
2601480001

8877 Real Estate, LLC  
CR 0278-629 3/13/2021  
4.638 ac. p. 019-1898  
2601480008



LET IT BE KNOWN, THIS MAP HAS BEEN PREPARED AS A REFERENCE GUIDE TO PROPERTY OWNERSHIP. WE BELIEVE THIS INFORMATION TO BE CORRECT AND CURRENT, HOWEVER IT IS NOT INTENDED FOR ANY LEGAL USE, WHETHER IT BE SALES, TRANSFERS, TRADES, LEASES OF ANY TYPE, ETC. AND DO NOT ACCEPT RESPONSIBILITY FOR ERRORS OF ANY NATURE OR OMISSIONS CONTAINED HEREIN.

S.F.T.  
new survey required for next transfer



Sec. 4, T-8, R-4  
Walnut Creek Twp.  
Holmes County, Ohio

**WC-24**

Last Revision: 11/18/2024

C-30

C-35