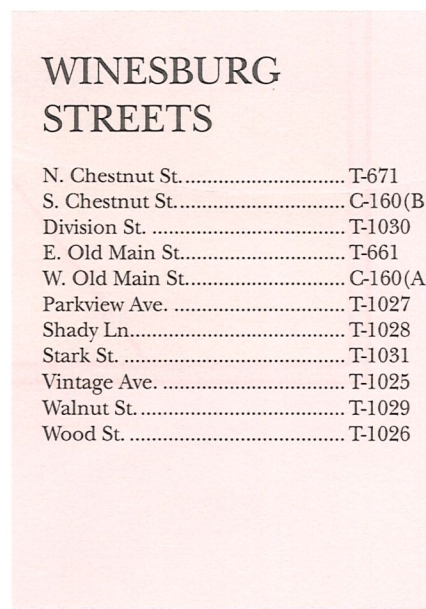
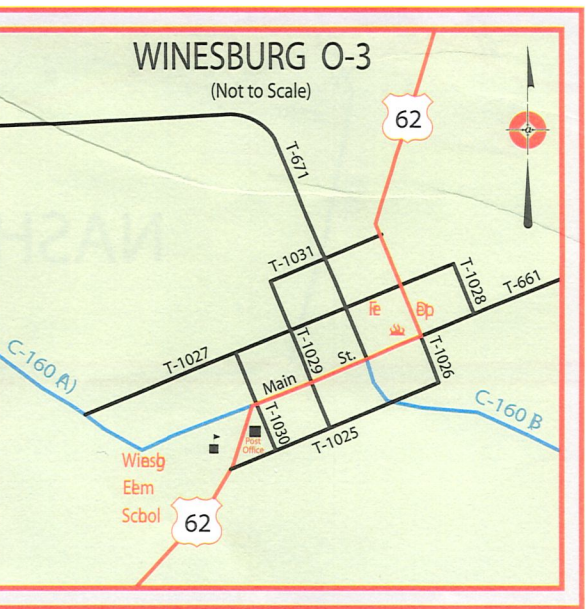
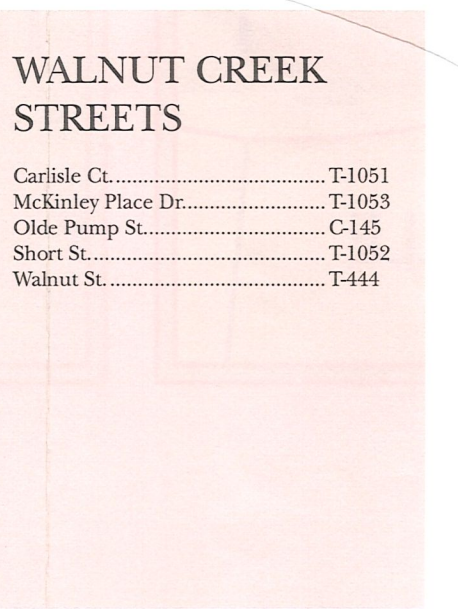
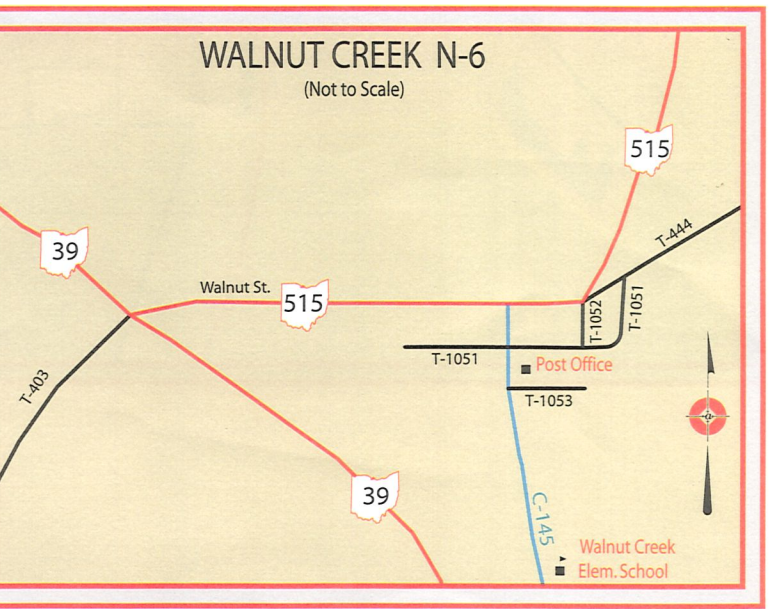
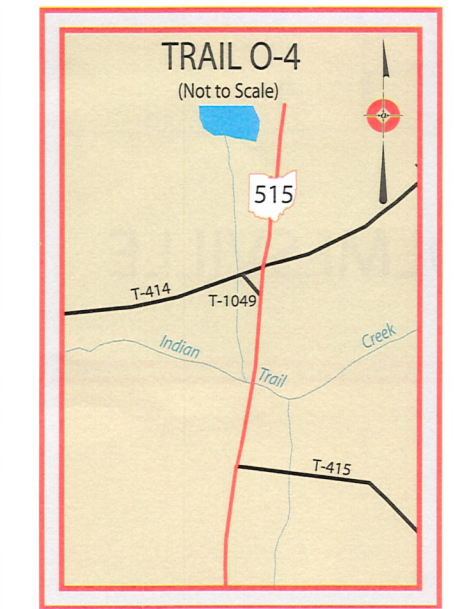
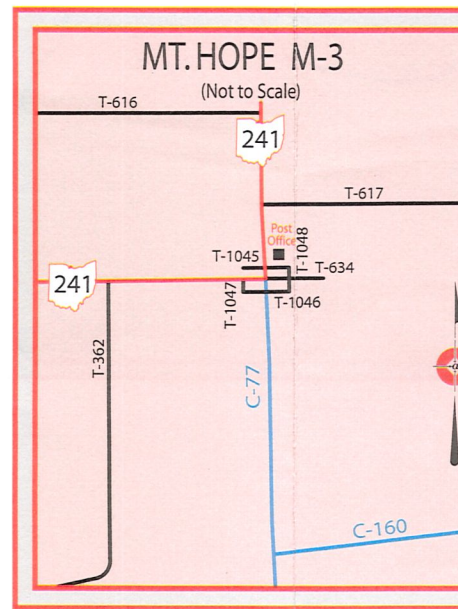
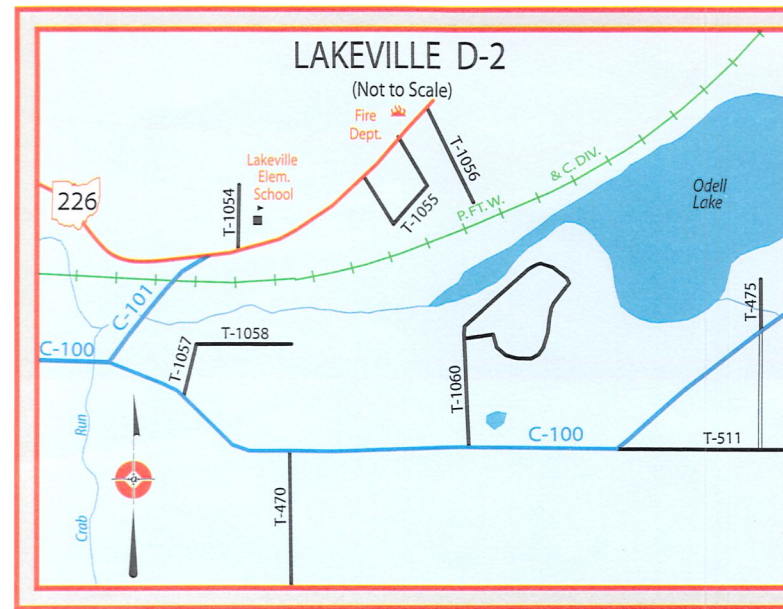
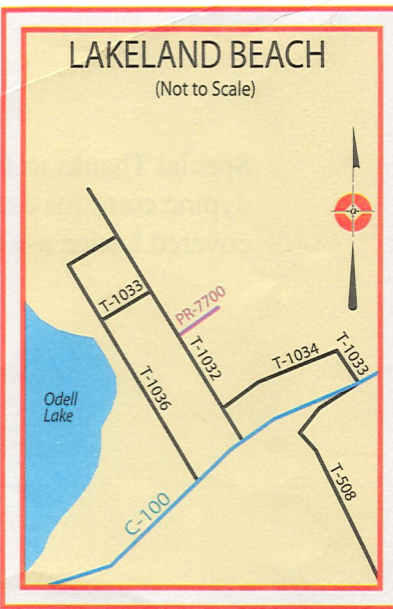
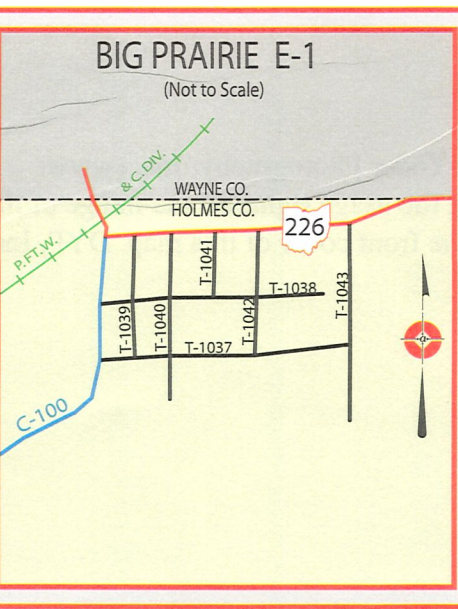
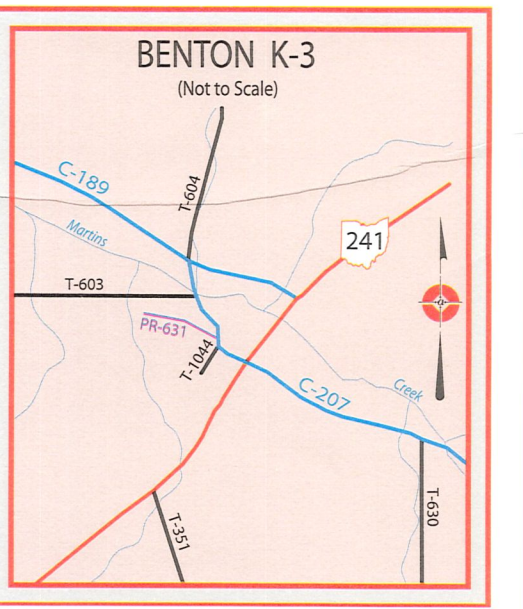
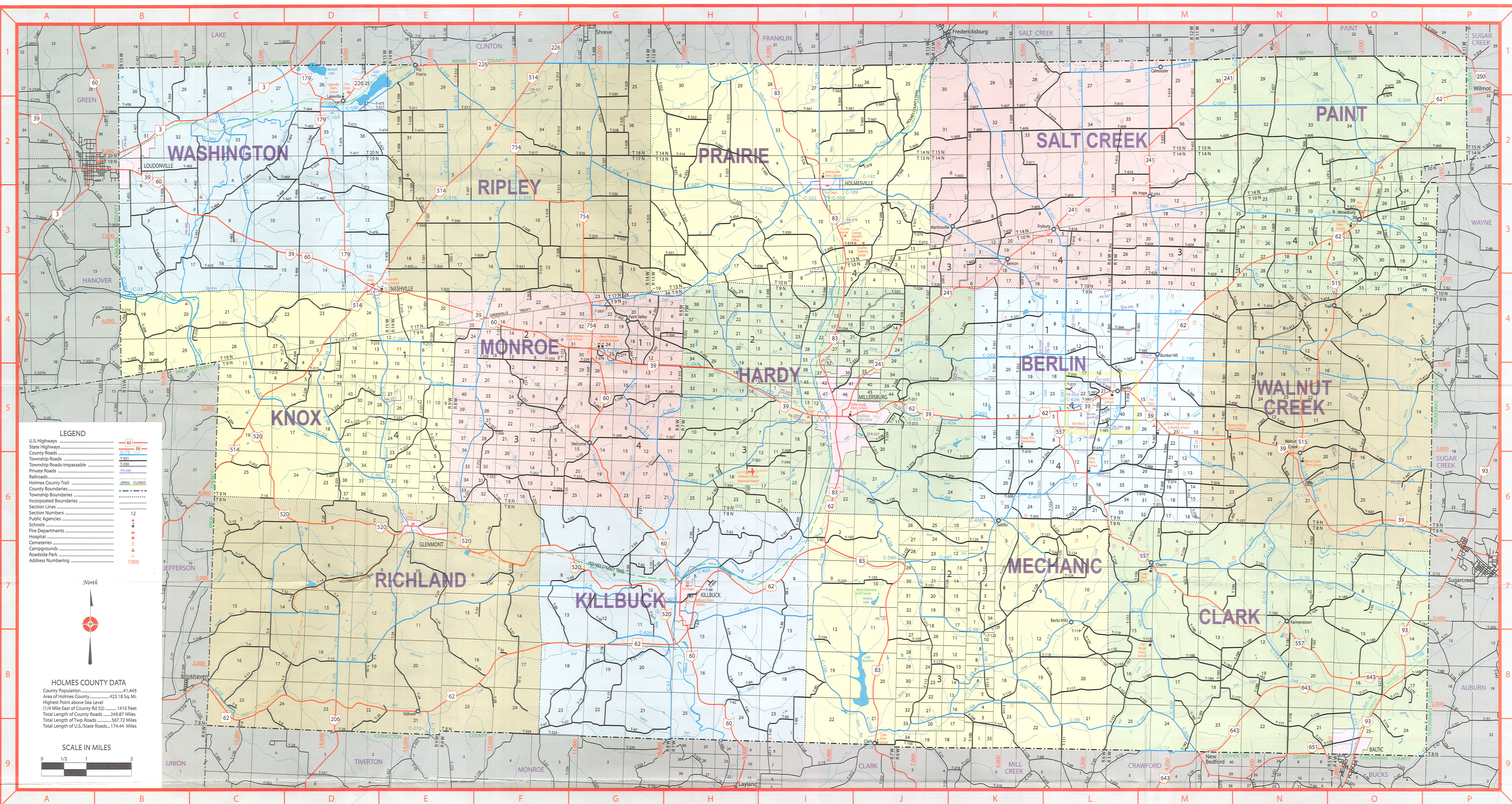
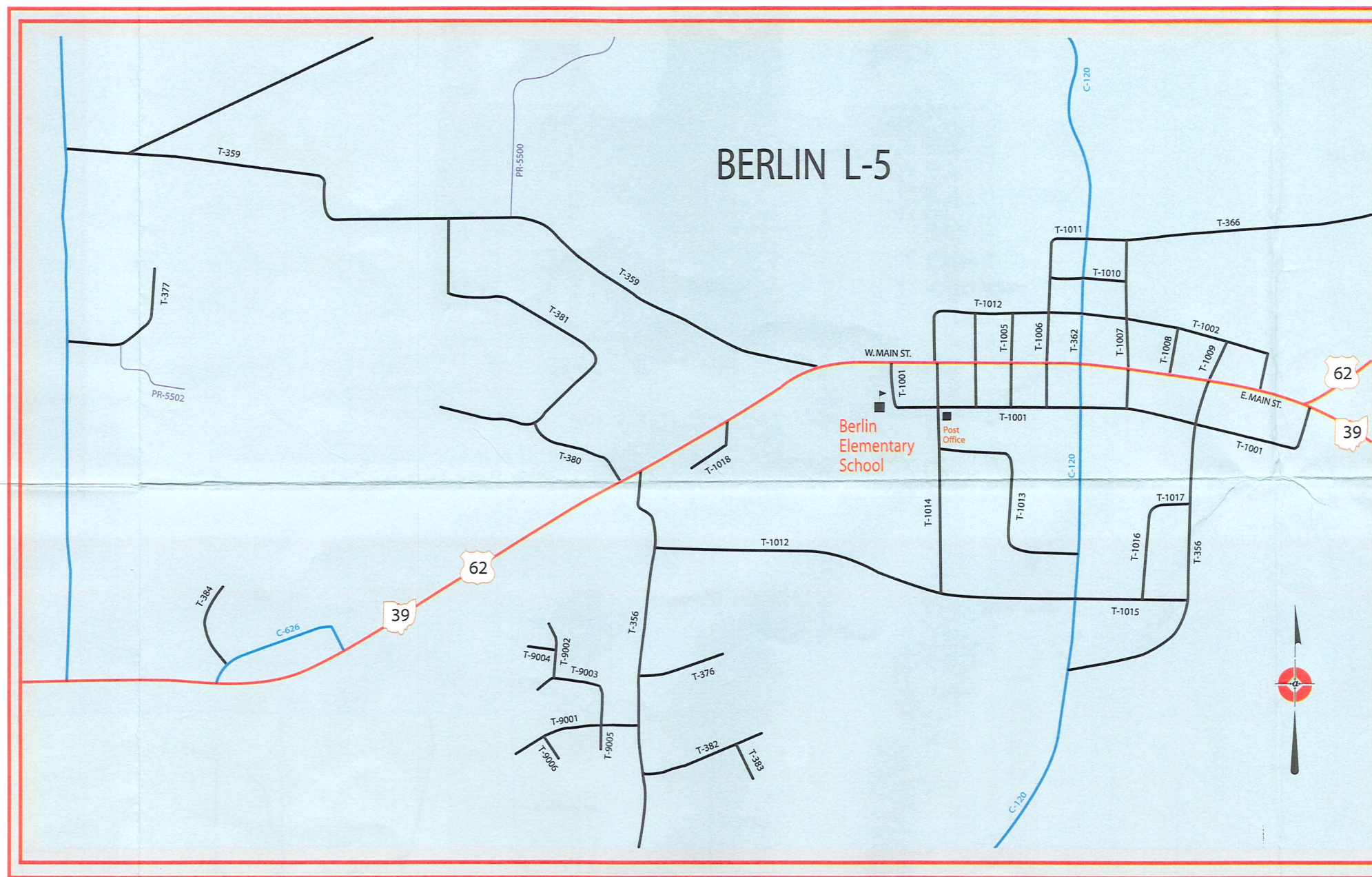
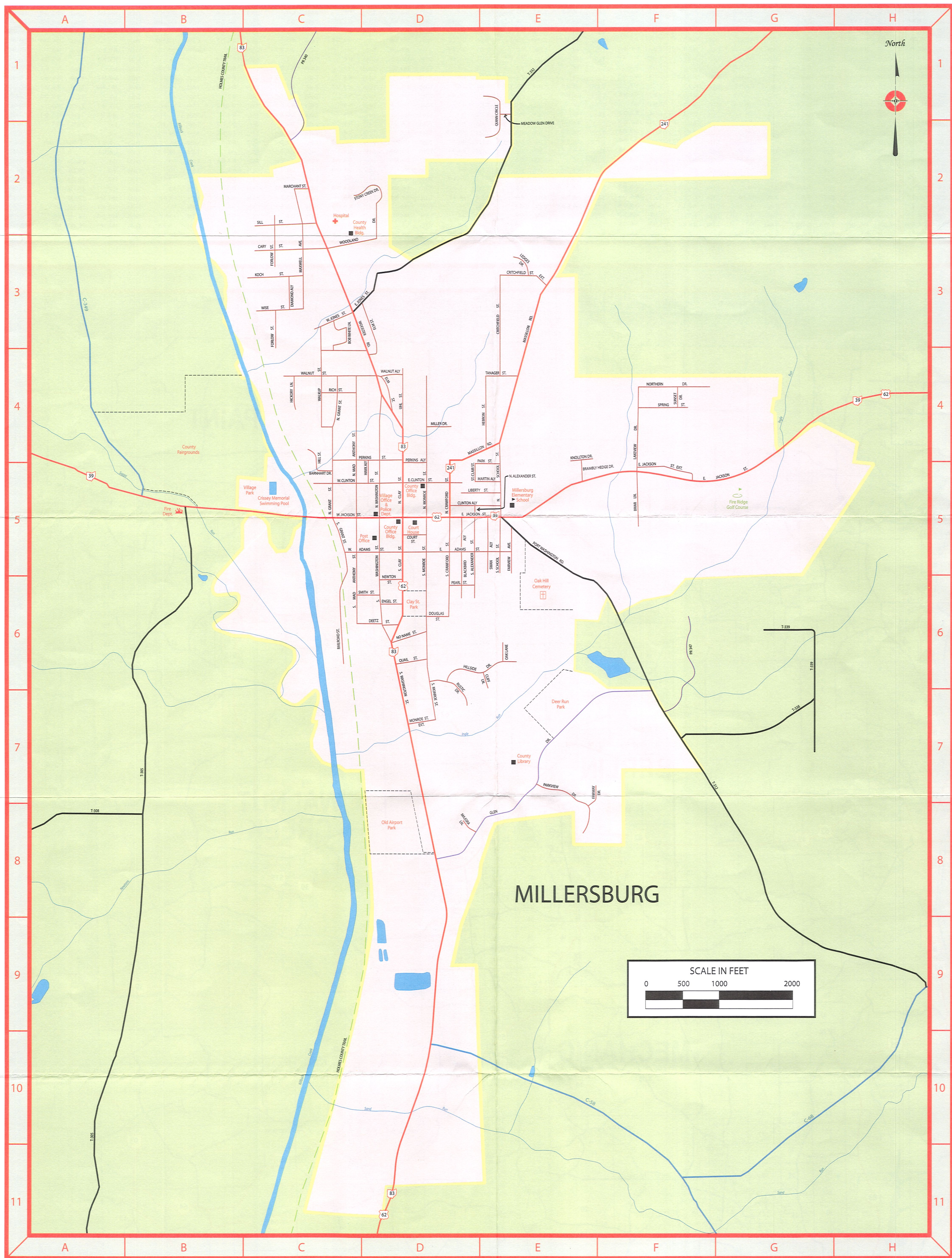


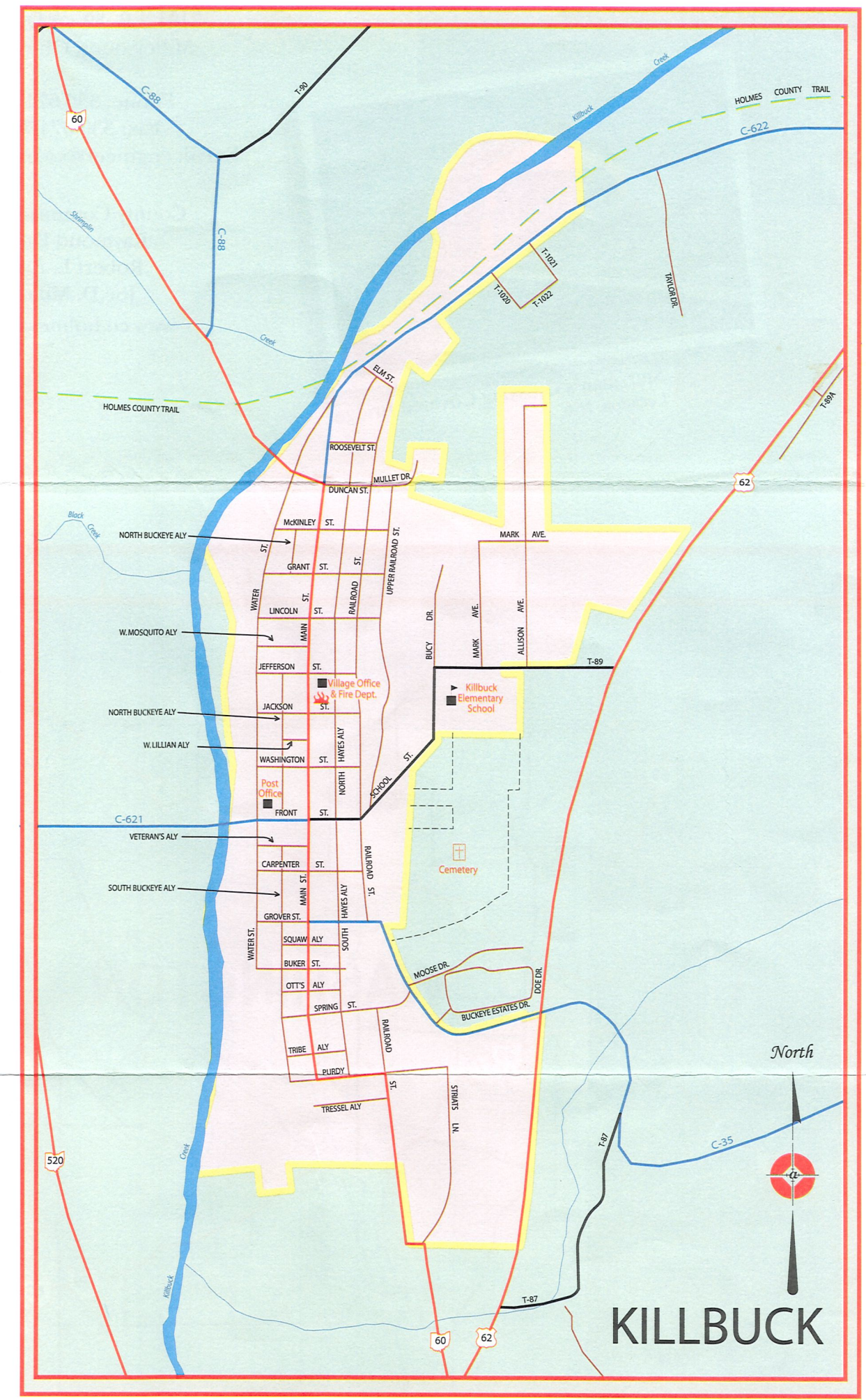
Table with columns: County Roads, Township Roads, and Private Roads. Lists various road identifiers like C11, C12, T11, T12, etc.





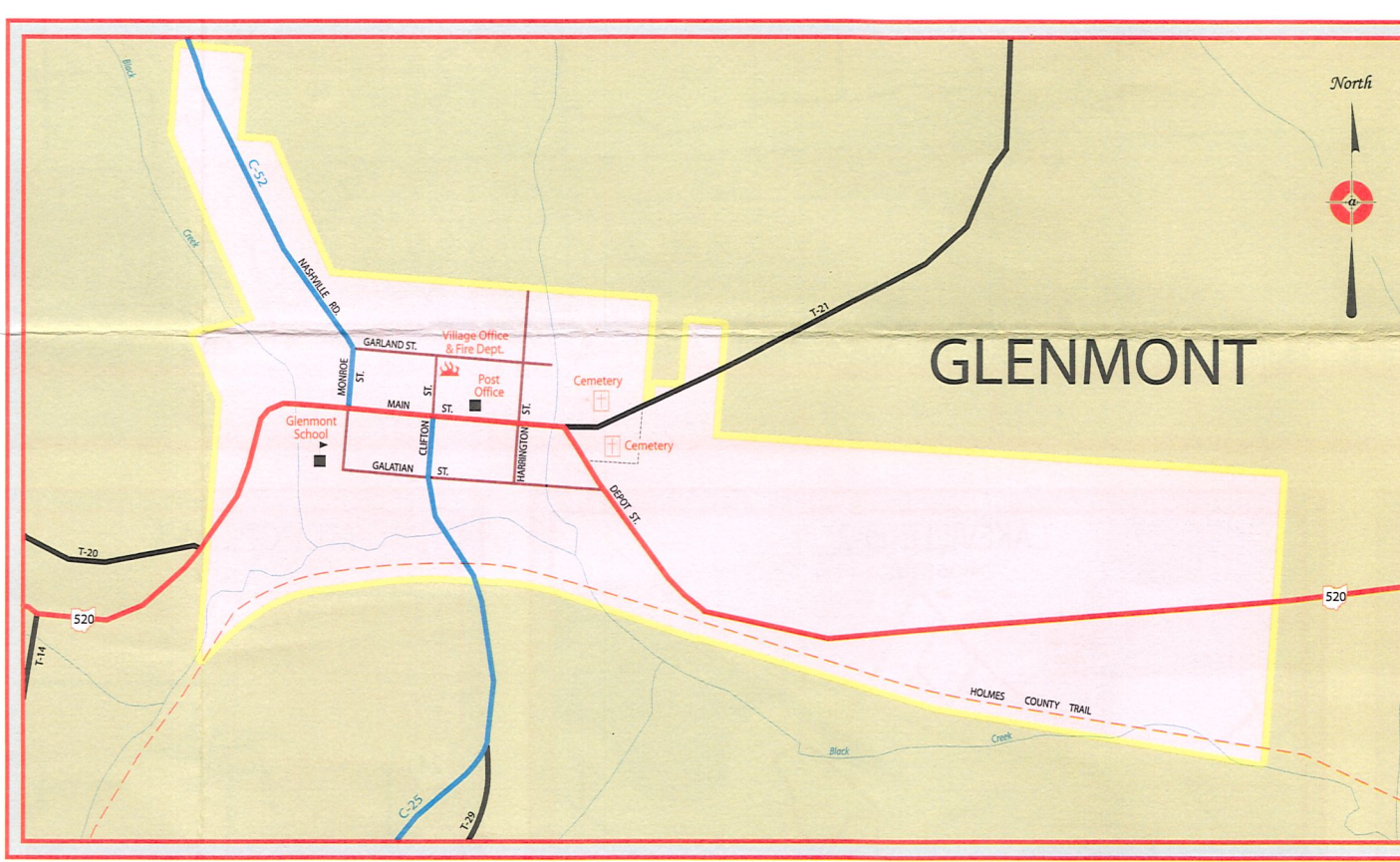
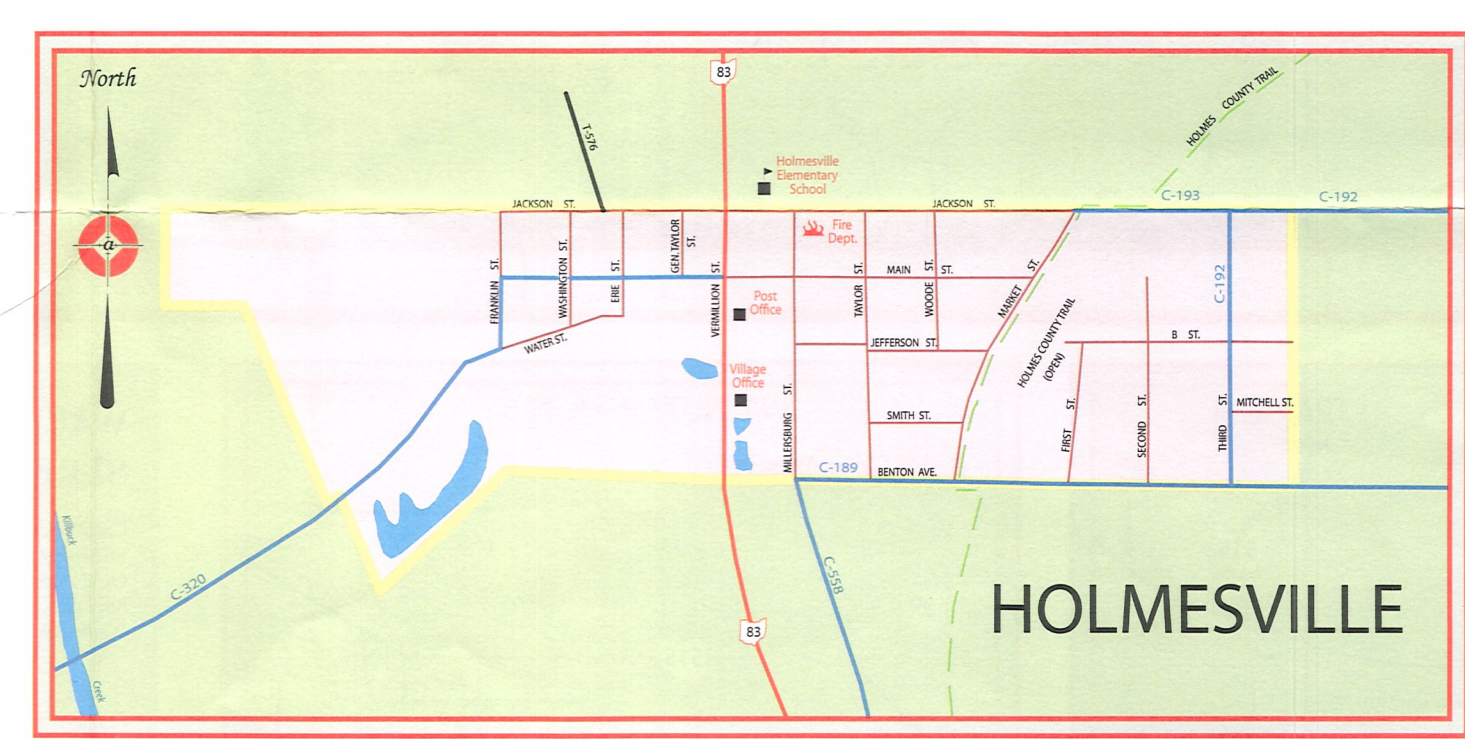
**BERLIN STREETS**

|                       |                        |                     |                     |                     |
|-----------------------|------------------------|---------------------|---------------------|---------------------|
| Atlee St. T-1017      | East St. T-358         | Maple St. T-1013    | Parkwood Dr. T-1012 | Somerset Dr. T-359  |
| Blue Jay Alley T-1005 | East St. T-1009        | N. Market St. C-362 | Pomeroy St. T-1016  | Sunset Knl. T-1018  |
| Cardinal Ct. T-9005   | Edgar St. T-9006       | S. Market St. C-480 | Rhine Rd. T-9881    | Tom Lion Rd. T-9886 |
| Dalbey Ln. T-1002     | Elm St. T-1014         | North St. T-1011    | Robin Ct. T-9004    | Valley Dr. T-1015   |
| Dryer St. T-1007      | Falcon Dr. T-9001      | Oak St. T-1001      | Ruhr Rd. T-380      | West St. T-1004     |
| Eagle Dr. T-9003      | Hummingbird Dr. T-9002 | Oriole Ct. T-9006   | Shane St. T-1006    |                     |



**MILLERSBURG STREETS**

|                          |                              |
|--------------------------|------------------------------|
| Barnhart Dr. C-5         | N. Grant St. C-4, C-5        |
| Blackbird Aly. D-5, D-6  | N. Mad Anthony St. C-4, C-5  |
| Bob White Ln. C-3, C-4   | N. Monroe St. D-4, D-5       |
| Brambly Hedge Dr. E-5    | N. School St. E-4, E-5       |
| Briar Ln. F-5            | N. Washington St. D-4, D-5   |
| Gary St. C-3             | Newton St. D-6               |
| Cliff Ln. E-6            | No Name St. D-6              |
| Clinton Aly. D-5, E-5    | Northern Dr. F-4             |
| Close St. C-4, D-4       | Oak Lane. E-6                |
| Court St. D-5            | Park St. D-5, E-8            |
| Critchfield St. E-8, E-4 | Parkview Drive. E-7, E-8     |
| Critchfield St. Ext. E-3 | Pearl St. D-6                |
| Deetz St. C-6, D-6       | Perkins Aly. D-5             |
| Diamond Aly. C-3         | Perkins St. C-4, D-4         |
| Douglas St. D-6          | Port Washington Rd. E-5, F-6 |
| E. Adams St. D-5, E-5    | Quail St. D-6                |
| E. Clinton St. D-5       | Quinn Circle. E-1, D-2       |
| E. Jackson St. D-5, G-4  | Railroad St. C-5, C-6        |
| E. Jackson St. Ext. F-3  | Rich St. C-4                 |
| Elm St. D-4, D-3         | Rusle Dr. D-6, D-7           |
| Engel St. D-6            | S. Alexander St. D-5, D-6    |
| Fairview Ave. E-5        | S. Clay St. D-5, D-6         |
| Fairway Dr. E-7, E-8     | S. Crawford St. D-5, D-6     |
| Forlow St. C-2, C-3      | S. Grant St. C-5             |
| Glen Drive. D-8, E-7     | S. Mad Anthony St. C-5, C-6  |
| Hawk Aly. D-5            | S. Monroe St. D-5, D-7       |
| Hebron St. E-4           | S. Washington St. D-5, D-11  |
| Hickory Lane. C-4        | S. School St. E-5            |
| Hill St. C-4, C-5        | Sill St. C-2                 |
| Hillside Dr. D-6, E-6    | Smith St. C-6, D-6           |
| Jones St. C-3, E-1       | Spring St. F-4               |
| Knollton Dr. E-5         | St. Clair St. D-5            |
| Roch St. C-3             | Stony Creek Dr. C-2, D-2     |
| Lakeview Dr. F-4, F-5    | Sunset Dr. E-4               |
| Liberty St. D-5, E-5     | Swan Aly. E-5                |
| Major Lane. D-8          | Tanager St. E-4              |
| Marchand St. C-2         | Uhl St. D-4                  |
| Martin Aly. D-5, E-5     | W. Adams St. C-5, D-5        |
| Mastillon Rd. D-4, E-3   | W. Clinton St. C-5, D-5      |
| Maxwell Ave. C-2, C-3    | W. Jackson St. D-5, D-5      |
| Meadow Glen Dr. E-1      | Walkup St. C-3, C-4          |
| Miller Dr. D-4           | Walnut Aly. D-4              |
| Monroe St. Ext. D-7      | Walnut St. C-4, D-4          |
| N. Clay St. D-4, D-5     | Wise St. C-3                 |
| N. Crawford St. D-4, D-5 | Woodland Dr. C-3, D-2        |
|                          | Wooster Rd. C-1, D-4         |



### HOLMES HISTORY

Holmes County lies in the eastern part of Ohio just north of an imaginary line passing east to west through the center of the state. It is one of the so called "backbone counties" of the state, being located just at the south edge of the watershed between Lake Erie and the Ohio River; its streams draining into the latter.

Holmes County was formed by an act of the General Assembly of Ohio in 1824, and the actual organization was completed by the same body on January 4, 1825. Its neighboring counties, Wayne to the north, Tuscarawas to the southeast and Coshocton to the south, were all formed at an earlier date, and the territory of Holmes County was taken from that of these three adjacent counties. The county was named for Major Holmes, a young officer of the War of 1812 who was killed in the unsuccessful American attack on Fort Mackinack in 1814.

The first white men to settle in the area which is now Holmes County, came in 1809 and 1810, and it was on February 4, 1810, that Hannah Butler was born in her parents' cabin near the Big Spring a short distance north of Holmesville on the present State Route 83.

At about the same time that the Butler and Grant families were settling in the central and northern parts of the county, a group of Amish Mennonites from eastern Pennsylvania crossed the Alleghenies and made the first settlement of their faith in Ohio near the present town of Sugar Creek in Tuscarawas County near the present Holmes County line. The deeds for this land were signed by President Thomas Jefferson, and a young Amishman named Jonas Stutzman took up two-quarter sections of land just south of the present village of Walnut Creek in Holmes County. Thus began the settlement of Amish people in the area, a settlement which has grown into one of the largest of its kind in the United States and which has contributed greatly to the picturesque quality of Holmes County rural life. The present day traveler in Holmes County is everlastingly fascinated by the quaint and interesting life of these good people.

Holmes County always was, and still remains a strictly Anglo-Saxon type of community, its ancestry coming almost entirely from central and northern Europe, principally from Germany and Switzerland, with a smaller group from France.

Among those coming from Switzerland were certain cheese makers who established their profession in the early days of the county. Today their descendants produce large quantities of Swiss Cheese known all over Ohio and even in neighboring states for its fine quality. Their modern cheese factories are frequently visited by tourists in the area.

Holmes County is often referred to as the "Switzerland of Ohio" not only because of its Swiss Cheese makers, but equally because of its beautiful scenery. The view from the cemetery hill in Millersburg, or from the top of the ridges above Glenmont is as breath-taking as any in Ohio, and there are many who are willing to say that these and many other points of vantage in Holmes County have scenic beauty unequalled east of the Rockies.

Holmes County is proud of its history, its fine farms, its good people and its great natural beauty. Despite its busy life, it possesses certain pastoral quality where those weary of the noise and pressures of life in the larger industrial communities can literally "get away from it all."

Special Thanks to Doyle Yoder Photography, Inc. (www.dypinc.com) for donating the usage rights on the image of the covered bridge used on the front cover of this map. DYP, Inc. ©