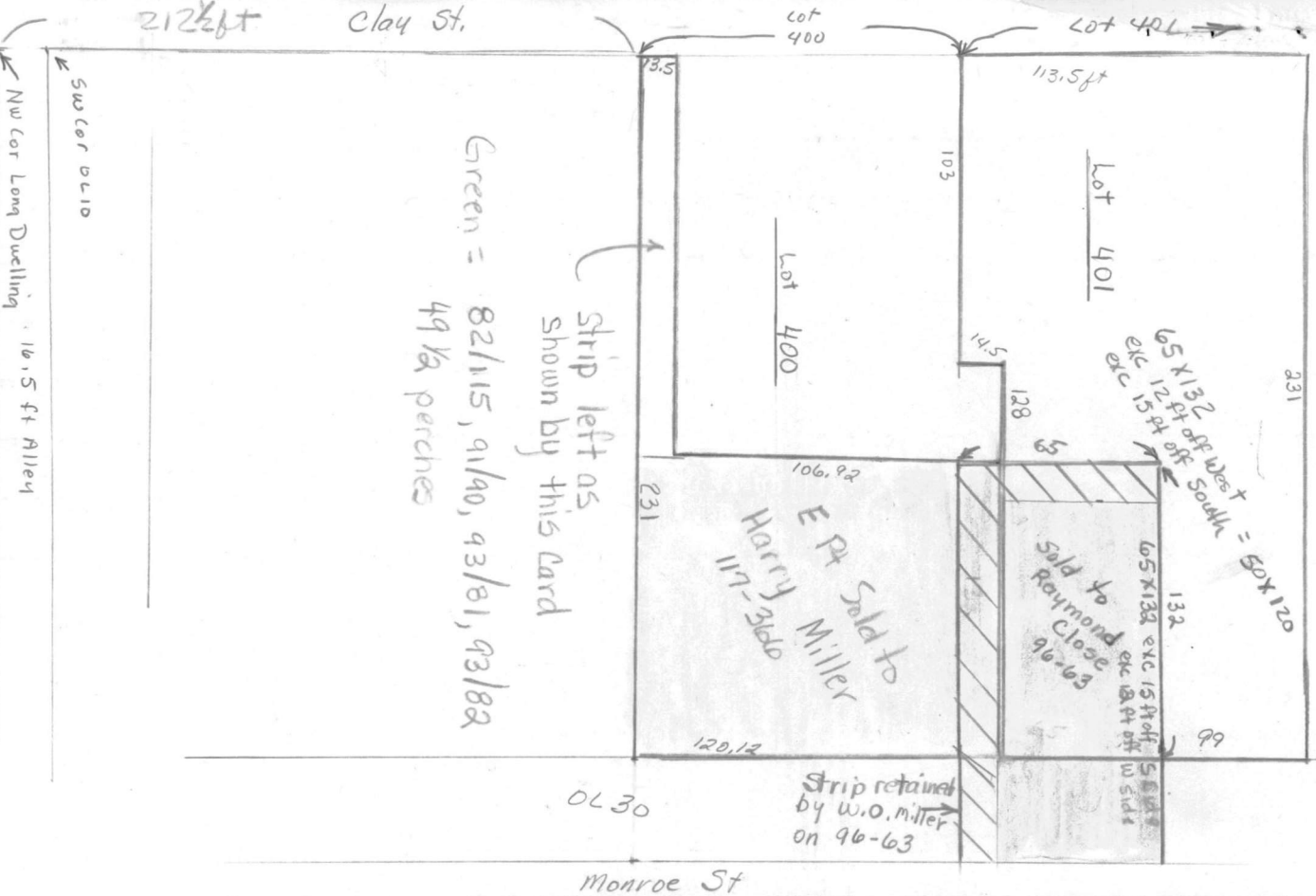






Blue = 56-509, 68-74, 63-986, 82-115  
56ac 93-82



ACRES	QTR	LOT	SEC	TWP	RNG	01d OL 10 DV 4-315	PLAT					
49.5		10				Millersburg Village	PCL #					
OUTSALE Bower, Benjamin						GRANTEE	DEED	REFERENCE	DATE			
Sheriff's Deed was from suit against						Van Brocklin, James H.	22	184	top & bottom	4-25		
Solomon Critchfield etal. However, Auditor's Tax Duplicate shows						break in chain			12	490	1857	
the transfer from J.H. Van Brocklin to Moses Leadbetter. →						Leadbetter, Moses	37	107	Sheriff's	10-14	1865	
Bearing changes from N 2° E 37-107 ↗						Leadbetter, Agnes	37	106	37	107	8-14	1873
to N 10° E on 37-106 →						Leadbetter, Galen	48	341	37	106	1884	
						Leadbetter, Agnes	52	107	48	341	1888	
						Snyder, Henry	56	579	52	107	1892	
						Snyder, Harry C. & Samuel R.	68	74	56	579	10-31	1903
						Snyder, Harry C. & Samuel R.	63	386	68	74	1-7	1905
						Snyder, Samuel R.	82	115	63	386		
						Snyder, Anna	91	90	68	74		1914
						Ackert, Ed	93	81	82	115	12-17	1920
							93	81	91	90		1921

SEE NEXT CARD

North Clay Str

