

ACRES	QTR.	LOT	SEC.	TWP.	RNG.
16.5			14	8	7

cont. from back card

Killbuck Twp.

PLAT		DEED		REFERENCE		DATE
VOL.	PG.	VOL.	PG.			

<i>Ept NE</i>	OUTSALE	GRANTEE 08-00104.000				
---------------	---------	----------------------	--	--	--	--

see back	S.F.T.	Brumme, Bruno R.	67	371	64	387	5-17-1902
----------	--------	-----------------------------	---------------	----------------	----	-----	-----------

		Brumme, Catherine etal					11-10-
		See back	124	525	67	371	1950

		Middaugh, Freda etal					6-21-
		see back	177	258	124	525	1971

		Middaugh, Freda etal					4-6-
		see back	201	432	177	258	1978

		Middaugh, Oscar O.	202	98	124	525	5-25-1978
--	--	-------------------------------	----------------	---------------	-----	-----	-----------

		Casey, Celia etal see back	203	370	202	98	9-18-1978
--	--	---------------------------------------	----------------	----------------	-----	----	-----------

		Smith, Frances H. etal	238	92	201	432	2-16-1988
--	--	-----------------------------------	----------------	---------------	-----	-----	-----------

		Sue E. & Dixon, Freda M.			124	525	1-2-
		Brumme, Bruce R & Davenport	245	828	201	432	1990

		<i>Void: pcls. comb.'s resurveyed</i>					
--	--	---------------------------------------	--	--	--	--	--

SEE NEXT CARD

124-525 etal: (fr. Bruno)

~~Catherine Brumme~~ 1/3 int.

~~Freda Middaugh~~ 1/9 int.

~~Albert Brumme~~

~~Carl Brumme~~

~~Mabel Brumme~~

~~John Brumme~~

~~Frank Brumme~~

177-258 etal: (fr. Catherine)

~~Freda Middaugh~~ 1/6 of 1/3 int. each

~~Albert I. Brumme~~

~~Carl Brumme~~

~~H. Mabel Brumme~~

~~John A. Brumme~~

~~Frank P. Brumme~~

201-432 etal: (fr. Albert)

~~Freda Middaugh~~ 1/5 of 1/6 int.
238-92 etal: (fr. Carl

~~Carl Brumme~~

~~H. Mabel Brumme~~

~~John A. Brumme~~

~~Frank P. Brumme~~

Brumme) - und 1/5

Smith, Frances H.

Coleman, Roseann Keeran

Keeran, Pansy

Keeran, Tammy

Walker, Georgia Keeran

203-370 etal: (fr. Oscar)

Celia Casey 1/3 of 1/5 int.

Doris Young 1/3 of 1/5 int.

Norma hoxworth 1/9 of 1/5 int.

Carolyn Mohr 1/9 of 1/5 int.

Marilyn Argabrute 1/9 of 1/5 int.

This is the auditor's acreage. The deed of 18 ac. calls for a 2.5 ac. exception to the school board. I couldn't find that outsale, but there is the 1.52 ac. parcel to Andrew Croskey in 107-562, (Now 208-806), that may be the parcel in question.

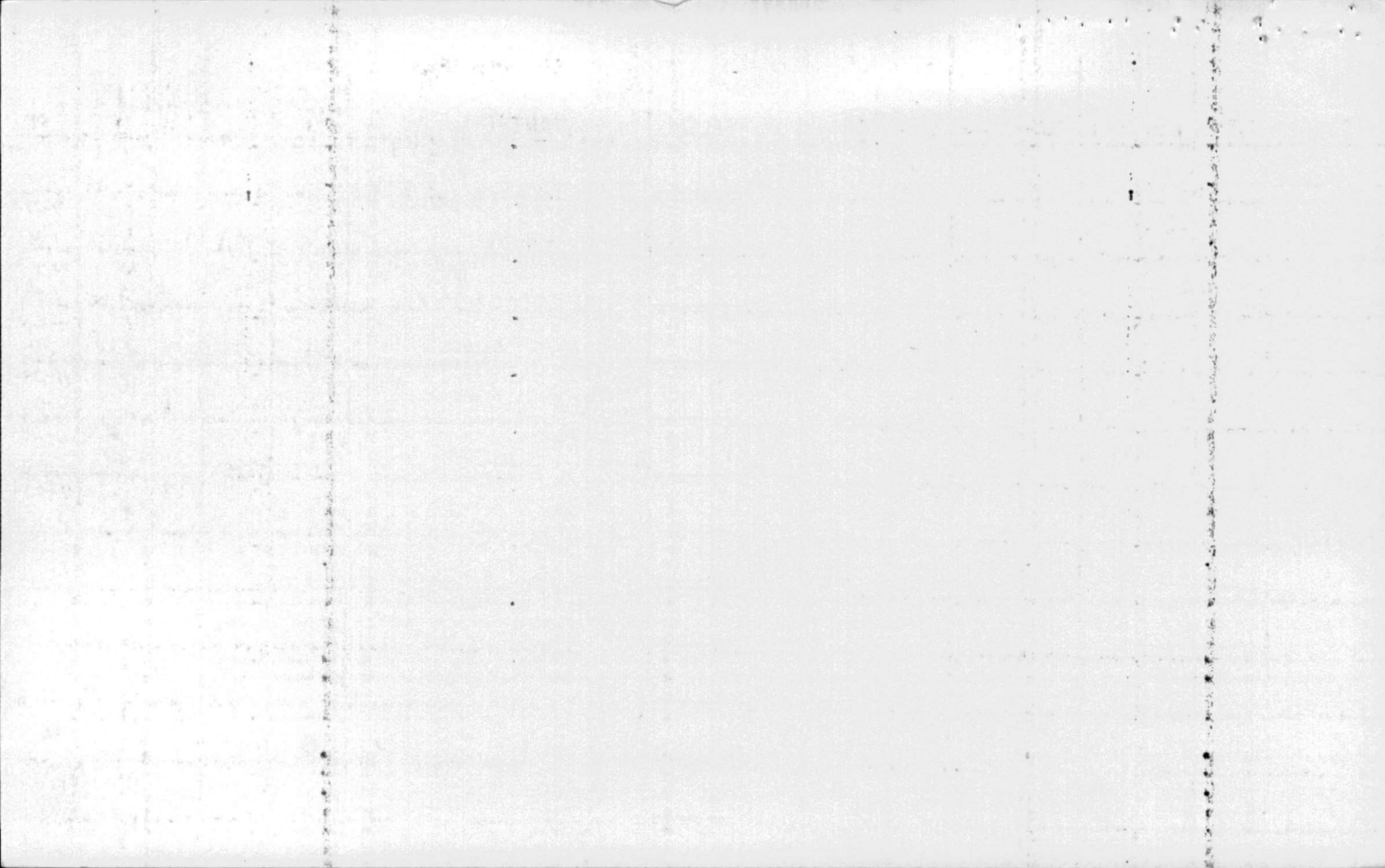
Killbuck Twp.

ACRES	QTR	LOT	SEC	TWP	RANGE	GRANTOR OR OUTSALE	GRANTEE	DEED		REFERENCE		YEAR	
								VOL	PG	VOL	PG		
18.6 78.6			14	8	7	ne comb. to split	Shepler, Henry	21	578	13	371	11-28	
60.0		Out Sale				Sanders, Joseph		31	336		577	1856	
							Shepler, Samuel J.	30	315	quit claim			10-12-1870
							Shepler, Samuel J.	39	433	21	578	1877	11-14-1867
85		Out Sale				Methodist Church Pleasant Grove Free see back		53	229				9-10-1877
							Croskey, Jane	40	243	30	433	1888	2-2-1878
							Croskey, Robert	54	105	39	433	1878	5-16-1893
							Croskey, Andrew	54	410	40	243	1894	12-29-1894
							Croskey, Robert	64	387	54	105	1894	5-14-1900
							Brunne, Bruno R.	67	371	64	410	1902	5-17-1902

Cont. on front card

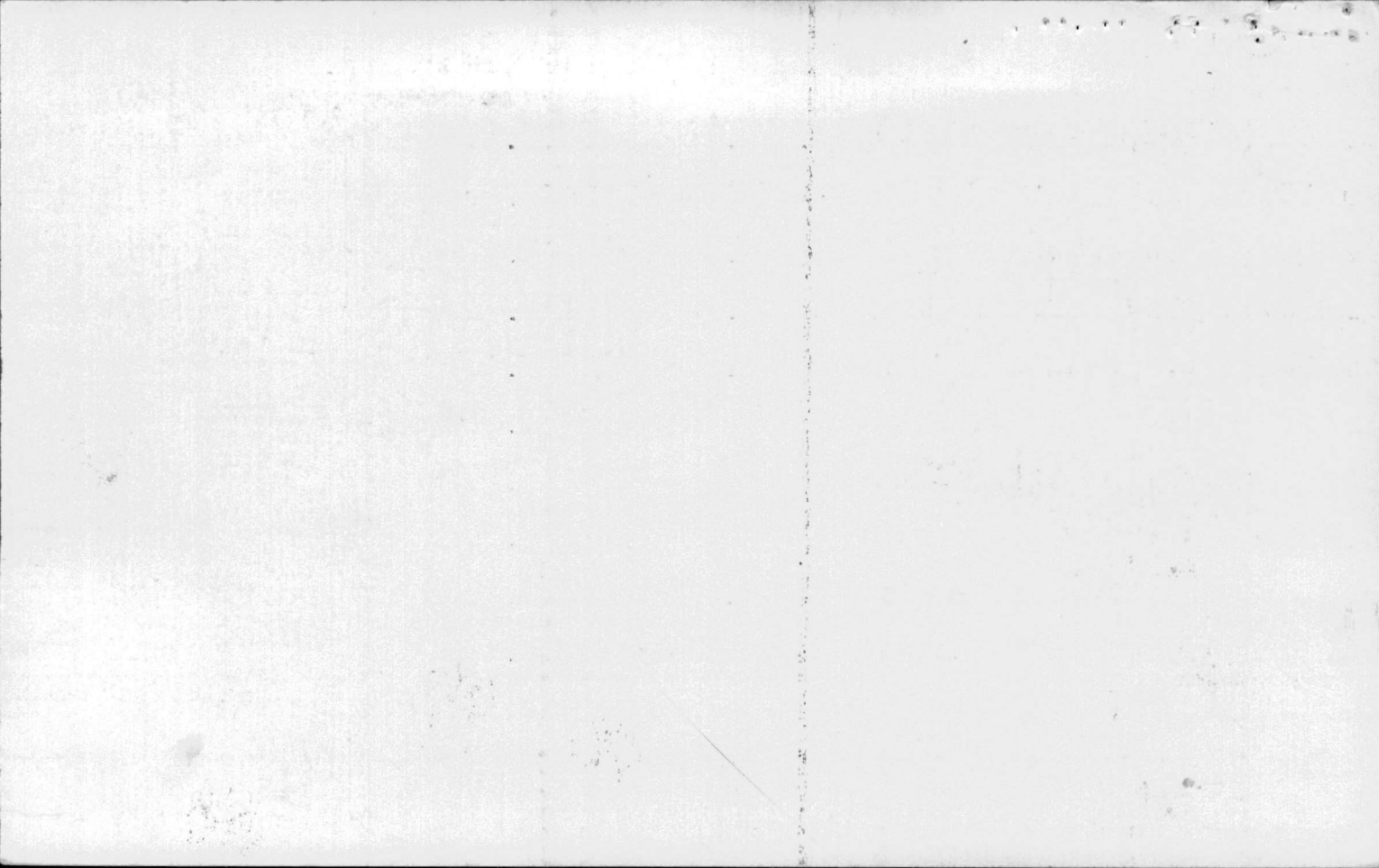
The .15 ac that Samuel Shepler sold in 53-239 is
already covered by the 1.4 ac that Henry Shepler
sold in 24-210.

ACRES	QTR	LOT	SEC	TWP	RANGE	GRANTOR OR OUTSALE	GRANTEE	DEED		REFERENCE		YEAR
								VOL	PG	VOL	PG	
38.6 40.0			14	8	7	nene	cert. n^o 10800 United States of America					
							Manett, Robert	8	427			7-7- 1842
							Samuel Vorhes, Jacob & Welch,	13	371	8	427	10-15- 1847
							Cameron, William B,	16	97	13	371	9-16- 1850
							Voorhes, Jacob	21	577	16	97	11-28- 1856
							Shepler, Henry	21	578	21	577	11-28- 1856
1.4		Out Sale				Church Protestant Methodist		24	210			7-20- 1860
							Combined to split					



Killbuck Twp.

ACRES	QTR	LOT	SEC	TWP	RANGE	GRANTOR OR OUTSALE	GRANTEE	DEED		REFERENCE		YEAR
								VOL	PG	VOL	PG	
40.0			14	8	7	sene	cert. n ^o 8473- United States of America					
							Manett, Robert	8	426			7-7-1842
							Samuel Vorhes, Jacob & Welch,	13	371	8	426	10-15-1847
							Cameron, William B.	16	97	13	371	9-16-1850
							Veerhes, Jacob	21	577	16	97	11-28-1856
							Shepler, Henry	21	578	21	577	11-28-1856
							<i>Combined to split</i>					



ACRES	QTR.	LOT	SEC.	TWP.	RNG.
10.0			14	8	7

Killbuck Twp.

PLAT

SPtSENE

OUTSALE Carpenter, Wilson

GRANTEE 08-00104.001

DEED		REFERENCE		DATE
VOL.	PG.	VOL.	PG.	

VOL.	PG.	VOL.	PG.	
------	-----	------	-----	--

				2-20-
				1904
				11-10-
				1950
				6-21-
				1971
				4-6-
				1978
				5-25-
				1978
				9-18-
				1978
				2-10-
				1988
				1-2-
				1990

~~Brumme, Bruno~~
~~Brumme, Catherine etal.~~
~~-see back-~~

~~Middaugh, Freda etal.~~
~~-see back-~~

~~Middaugh, Freda etal.~~
~~-see back-~~

~~Middaugh, Oscar O.~~

~~Casey, Celia etal.~~
~~-see back-~~

~~Smith, Frances H. etal.~~

~~Sue E. & Dixon, Freda M.~~
~~Brumme, Bruce R & Davenport~~

Void: pchs comb.' resurveyed

SEE NEXT CARD

124-525 etal: (fr. Bruno)

~~Catherine Brumme~~ 1/3 int.

~~Freda Middaugh~~ 1/9 int. EACH

~~Albert Brumme~~

~~Carl Brumme~~

~~Mabel Brumme~~

~~John Brumme~~

Frank Brumme

177-258 etal: (fr. Catherine)

~~Freda Middaugh~~ 1/6 of 1/3 int. each

~~Albert I. Brumme~~

~~Carl Brumme~~

~~H. Mabel Brumme~~

~~John A. Brumme~~

Frank P. Brumme

201-432 etal: (fr. Albert)

~~Freda Middaugh~~ 1/5 of 1/6 int. each

~~Carl Brumme~~

~~H. Mabel Brumme~~

~~John A. Brumme~~

Frank P. Brumme

203-370 etal: (fr. Oscar)

Celia Casey 1/3 of 1/5 int.

Doris Young 1/3 of 1/5 int.

Norma Hoxworth 1/9 of 1/5 int.

Carolyn Mohr 1/9 of 1/5 int.

Marilyn Argabrite 1/9 of 1/5 int.

238-92 etal: (fr. Carl Brumme)-und. 1/5

Smith, Frances H.

Coleman, Roseann Keeran

Keeran, Pansy

Keeran, Tommy

Walker, Georgia Keeran