

ACRES	QTR	LOT	SEC	TWP	RNG
4.438					
12.889	3	22		9	7

Hardy Twp.

PLAT	15-44
PCL #	DL-01119.000

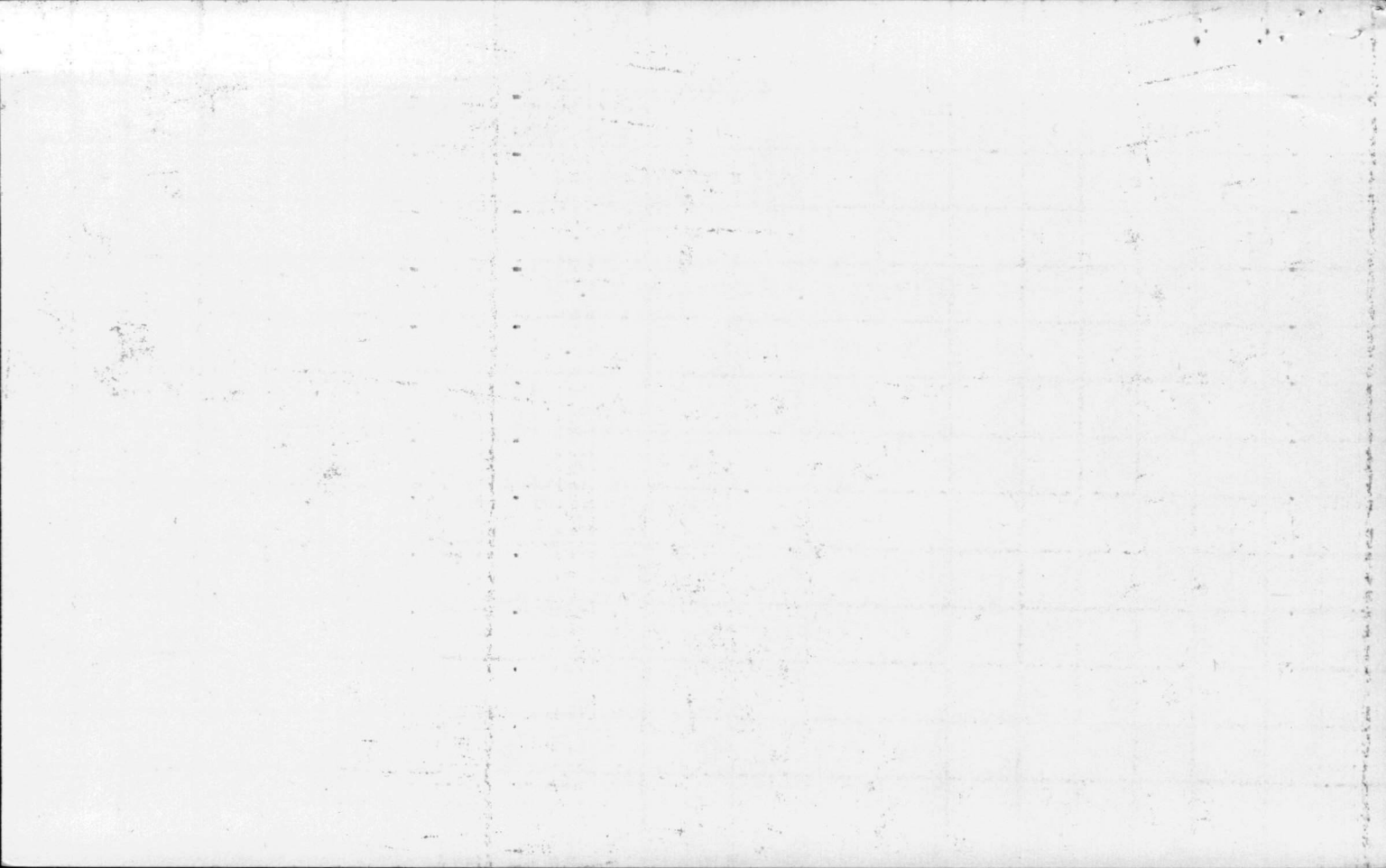
OUTSALE		H-7 SE	GRANTEE		DEED		REFERENCE		DATE
			Bird, Thomas K.		-267	-548	correct'n		2-9-1995
8.451	Keeler, Ricky A.				267	552	14	726	2-9-1995
			Bird, Thomas K. & Cheryl L. co-trustees		-2	-157	211	475	1-23-1998
		1/2	Bird, Thomas K. trustee		66	22	2	157	1-19-2001
		1/2	Bird, Cheryl L. trustee		66	43	2	157	1-19-2001

SEE NEXT CARD

ACRES	QTR.	LOT	SEC.	TWP.	RNG.	PLAT					
						DEED		REFERENCE		DATE	
9.9294 27.90		3	22		9	7	Hardy Twp.				
	OUTSALE				GRANTEE		VOL.	PG.	VOL.	PG.	DATE
	SURVEY FOR TRANSFER—see attached cards				Litteral, Dallas & Mayo		111	258			11-1 1941
4.09	Scheetz, Harold & Joan				Litteral, Mayo — (Dallas dec'd)		144	115	3	13B	9-24 1960
					DeMets, Alice J.		173	640	111	258	5-23 1970
					Hipp, Inc.		173	643	173	640	5-23 1970
					Bird, Thomas K. (Tract #1 less 4.09) Tract #2		200	790	173	643	1-10 1978
							211	475	200	790	11-20 1980
9.2086	Elliott, Larry D. & Deborah L.						222	38	10	206	11-4 1983
4.662	Snyder, Bradley S. & Kathy L.						267	516	15	44	2-3- 1995
	9.9294 + 4.4 res to 12.889				Void: comb. res.						
					SEE NEXT CARD						

ACRES	QTR	LOT	SEC	TWP	RANGE	GRANTOR OR OUTSALE	GRANTEE	DEED		REFERENCE		
								VOL	PG	VOL	PG	YEAR
14.17	3	22		9	7		Litteral, Dallas and Mayo	411	-258			
							13.73 AC. PLUS 14.17 AC. WERE					
							COMBINED TO MAKE 4.09 AC. SPLIT					

VOID



ACRES	QTR	LOT	SEC	TWP	RANGE	GRANTOR OR OUTSALE	GRANTEE	DEED		REFERENCE		
								VOL	PG	VOL	PG	YEAR
13.73	3	22		9	7		Hardy Twp. Litteral, Dallas- and Mayo	411	258			
						13.73 AC. PLUS 14.17 AC. WERE COMBINED TO MAKE 4.09 AC. SPLIT						
VOID												

6.936
4.858
2.078

14.06
- 1.33 excepted but not found
13.73

