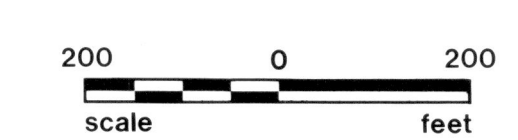




**HOLMES COUNTY, OHIO  
PHOTOGRAPHIC ENLARGEMENT**

PRODUCED FROM PHOTOGRAPHY EXPOSED 3-29-86



SHEET NO. K-20

1" = 200' QTR. \_\_\_ LOT \_\_\_ SEC. 5 TWP. 8 RANGE 7

