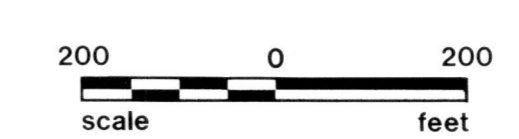




HOLMES COUNTY, OHIO  
PHOTOGRAPHIC ENLARGEMENT

PRODUCED FROM PHOTOGRAPHY EXPOSED 3-29-86



1" = 200'

QTR.  $\frac{1}{2}$  LOT  $\frac{43}{12}$  SEC. 13 TWP.  $\frac{9}{9}$  RANGE  $\frac{7}{7}$

SHEET NO. H-15

