

**HOLMES COUNTY, OHIO  
PHOTOGRAPHIC ENLARGEMENT**

PRODUCED FROM PHOTOGRAPHY EXPOSED JAN & MAR 74

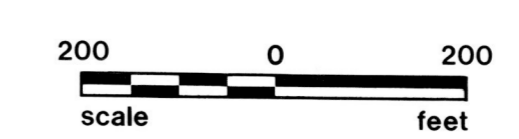


PHOTO NO. 1191

1" = 200' QTR. LOT SEC. 33 TWP. 14 RANGE 13

N  
PR  
14